

EDX Upgrades

Have an EDX system that's running out of steam?

- ◆ New MCA and Windows based software from \$4500.
- ◆ Complete Electronics - Bias supply, premium 8th order triangular filter pulse processor, 4000 channel (0-20 keV at 5 eV per channel) MCA and full quantitative analysis software from \$13,990.

Visit our web site:

www.ansxray.com

for complete details and free demo software.



American Nuclear Systems, Inc.

1010 Commerce Park Dr., Suite G

Oak Ridge, TN 37830

(800) 980-9284 FAX (423) 482-6253

email: sales@ansxray.com

www.ansxray.com

Lightning and the Electron Microscope

Lydia Rivaud, Engelhard Corporation

The chain of events that led to the invention of the electron microscope is an interesting story by itself. This chain has a common theme, namely electrons, and its first link is a natural phenomenon: lightning.

A flash of lightning generates a stream of electrons with a potential energy difference of 100 to 200 megavolts between clouds acting as electrodes. Benjamin Franklin envisioned this as a source of energy and tried to snatch electricity from the skies, but this proved to be too dangerous.

At the beginning of the century, lightning was a problem for electrical utilities because it produced surges that disrupted the steady flow of electricity along high tension lines. For this reason, in 1929 a high tension laboratory was founded in Germany with the sole aim of finding a way to test electrical transmission lines so as to make them capable of withstanding the lightning surges.

The first approach to the problem was to design equipment that could simulate the effect of lightning on transmission lines. The test equipment already existed: cathode ray oscillographs, the precursors to modern commercial oscilloscopes. The cathode ray oscillograph used a beam of electrons in a high voltage chamber, a set-up similar to an electrical transmission line being affected by lightning's high voltage. There was a difference when comparing lightning and transmission lines to oscillographs with their voltage and electron beam. The oscillograph could maintain a continuous high voltage on its electron beam, while lightning gives a series of voltage discharges on electrical lines lasting a fraction of a second each. The steady voltage in the oscillograph was more suitable for experimentation than a series of short voltage surges. In addition, the electron beam in the oscillograph could record any induced voltage disturbance affecting it by writing on a fluorescent screen.

Cathode ray oscillographs constitute the second link in the chain of events being followed here. The next step was to modify the oscillograph and its recording media in order to improve the resolution of the output signal recorded by the electron beam. The first modification was to pump the cathode tube chamber to a vacuum. The second modification was to improve the resolution of the electron beam by focusing it to a smaller spot.

Max Knoll and Ernst Ruska in the German high tension laboratory then turned to Hans Busch's theory developed in 1929. Busch's theory postulated that a current circulating in a coil wrapped around a magnet had the same effect on a collimated beam of electrons as a glass convex lens on a light beam. Busch had, in effect, postulated the electromagnetic lens and Ruska decided to apply it to focusing the electron beam in the oscillograph in order to optimize its recording resolution on the fluorescent screen.

The application of Busch's theory to the electron beam focusing in the oscillograph constitutes the third link in the chain of events that led to the invention of the electron microscope.

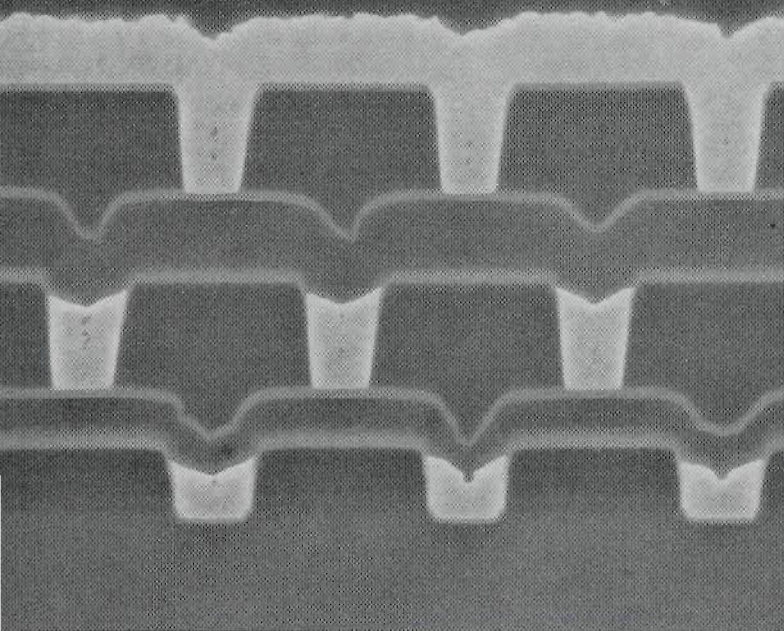
Since Busch postulated that the electromagnetic lens should behave like a convex lens in an optical microscope, Ruska speculated he could apply the theory both to focus the electron beam in the oscillograph to improve the recording of voltage effects on the electron beam, as well as for constructing a magnifying microscope. He designed an arrangement of two electromagnetic lenses that would be capable of focusing the electron beam and in addition giving a magnified image of an object placed in front of the first lens. He placed the lenses in the vacuum inside the oscillograph chamber. Thus Ruska obtained a focused electron beam as well as the first electron microscope. The first three micrographs recorded were from bronze and platinum mesh grids at x4.3, x17.4, and x13 magnifications¹.

The electromagnetic lenses are the fourth link in the chain of events that started with lightning and led to the invention of the electron microscope.

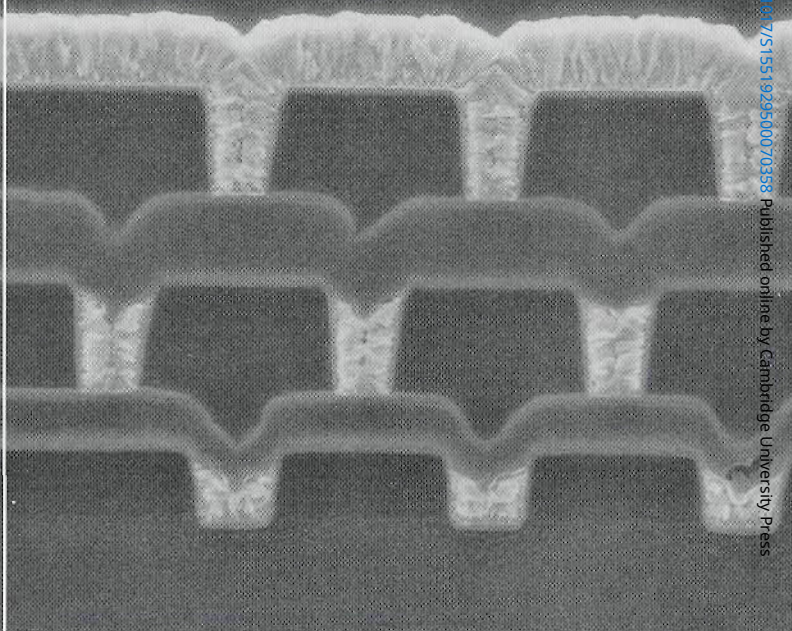
1. Martin M. Freundlich, "The History of The Development of The First High-Resolution Electron Microscope", MSA Bulletin, Vol.24, No.1 (1994).

Value Through Innovation

Before Etching and Coating



After Etching and Coating



Before and after images showing the polished cross-sectional view of a typical semiconductor device. The sample was etched for 5 minutes at 6 kV and coated with Au/Pd. In the etched image, the detailed grain structure of the tungsten plugs are plainly visible.

PECS PRECISION ETCHING COATING SYSTEM

Chemical-free etching and coating in a single unit for SEM and light microscopy

The new Precision Etching Coating System (PECS™) provides clean, chemical-free etching and high resolution sputter coating in one compact desktop unit.

Chemical free etching. Eliminates hazardous chemicals from your lab and provides precise control over the etching process.

Etching/coating in one instrument. Samples can be etched and coated without breaking vacuum, reducing sample handling and contamination or oxidation.

Controlled etching and coating. Rock and rotate angles and rocking speed can all be varied to ensure uniform etching and coating of the sample.

Increased sample throughput. Samples can be re-etched and coated as necessary. You can select up to four target materials without breaking vacuum. Dormant targets are fully shielded from sputter contamination. The 36-mm stage and sample holder will accept most SEM stubs and metallographic specimens.

Easy to use with simple controls. Programmable timer precisely controls the duration of sample etching or coating. Coating rates and thicknesses can be measured with probe and film-thickness monitor.

For more information on the new PECS, contact Gatan or a Gatan representative for more information.



Gatan USA —Pleasanton, Ca
tel 510 463 0200
fax 510 463 0204
Gatan USA —Warrendale Pa
tel 412 776 5260
fax 412 776 3360

Gatan GmbH, Germany
tel (089) 35 23 74
fax (089) 35 91 642
Gatan Ltd, UK
tel (01536) 743150
fax (01536) 743154

Gatan Services Corp., Japan
tel 81 (3) 3928 6752
fax 81 (3) 3928 6758
Gatan Online
www.gatan.com
info@gatan.com

Circle Reader Inquiry #1