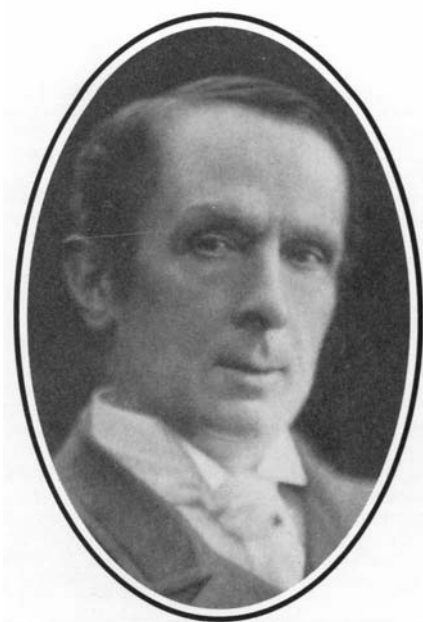


December
1991

The Journal of Laryngology and Otology



Founded in 1887 by Morell Mackenzie & Norris Wolfenden

Edited by JOHN B. BOOTH

Assistant Editors NEIL WEIR, PATRICK BEASLEY, CAROL WENGRAF, RICHARD RAMSDEN,
IOLO GRIFFITH & PETER RHŶS EVANS

Advisor in Pathology IMRICH FRIEDMANN

Advisor in Audiology LINDA LUXON

Advisors in Radiology GLYN LLOYD & PETER PHELPS

Advisors in Statistics STEPHEN EVANS, ANTHONY HUGHES, PETER KELLY & GILLIAN RAAB

Vol 105
No 12

The Journal of Laryngology and Otology

(Founded in 1887 by MORELL MACKENZIE and NORRIS WOLFENDEN)

Edited by JOHN B. BOOTH

Assistant Editors NEIL WEIR, PATRICK BEASLEY, CAROL WENGRAF, RICHARD RAMSDEN,
IOLO GRIFFITH & PETER RHŶS EVANS

INSTRUCTIONS FOR AUTHORS

1. Original articles which have not been published elsewhere are invited and should be sent to the Editor. They are considered for publication on the understanding that they are contributed to this *Journal* solely. Reproduction elsewhere, in whole or in part, is not permitted without the previous written consent of the Author and Editor and the customary acknowledgement must be made. Normally an original main article should not exceed 7500 words.

Longer articles or theses will be considered for publication as *Supplements*, at the expense of the authors or their employing authorities.

2. Manuscripts should be **typewritten in duplicate** on one side of the paper only (A4 297x210 mm) and double spaced, with wide margins. Computer print-outs are not favoured.

Begin each component on a new page in the following sequence: title page, abstract, text, acknowledgements, references, tables and legends.

(a) **Abstract**—This should contain not more than 150 words and include a statement of the problem, the method of study, results and conclusions; a 'summary' section should **not** be included in the main manuscript.

(b) **Key Words**—only those appearing as Medical Subject Headings (MeSH) in the supplement to the Index Medicus may be used; where no appropriate word(s) are listed those dictated by common sense/usage should be supplied.

(c) **Text**—Suggested outline—(1) introduction, (2) materials and methods, (3) results, (4) discussion, (5) conclusion.

(d) **Tables** are adjuncts to the text and should not repeat material already presented.

(e) **Illustrations**—Two sets of illustrations, one with each copy of the manuscript, must be submitted and all authors should remember that the single column width is 80mm. One set of illustrations should, therefore, not exceed this width and they should ensure that the essential features are illustrated within this dimension.

Coloured illustrations will be charged to authors, unless a special grant is authorized by the Editor.

Written permission from the publisher must be provided to the *Journal* in order to republish material with copyright elsewhere and also from the senior author where necessary.

(f) **Measurements** must be in metric units, with *Système Internationale* (SI) equivalents given in parentheses.

(g) **References**—For *Journal* articles, The Harvard system of recording references should be used, e.g. Green, C. and Brown, D. (1951). The tonsil problem. *Journal of Laryngology and Otology* 65: 33–38. A paper written by more than two authors should be abbreviated in the text, e.g. Green *et al.* (1951), but *all* the authors should be given in the list of references. The titles of all Journals should be given without abbreviation. **References should be listed in alphabetical order**; use of the Vancouver system will **not** be accepted.

For single-author books, the following style should be used: Green, C. (1951). *The tonsil problem*, 2nd edn., vol. 1, Headley Brothers Ltd., Ashford, Kent, p 33–38.

For papers in multi-author books with one or more editors, the reference should include the title of the chapter and the names of the editors, together with the number of the edition as eg: Brown, D. (1951) Examination of the ear. In *Diseases of the Ear, Nose and Throat*. 2nd Edition. (White, A., Black, B., eds.), Headley Brothers Ltd, Ashford, Kent, p 33–38.

It is most important that authors should verify personally the accuracy of every reference before submitting a paper for publication. The names of authors cited in the References should be given in alphabetical order.

(h) **Meetings**—If the manuscript was presented at a meeting, the place where it was held, and the date on which it was read must be included and should appear at the foot of the title page.

(i) **Financial disclosures**—In the submission letter to the Editor, the authors must list all affiliations with or financial involvement in, organizations or entities with a direct financial interest in the subject matter or material of the research discussed in the manuscript.

(j) **Declaration**. Each manuscript must be accompanied by a letter of declaration to be signed by each author to confirm that they have seen, read and approve the contribution bearing their name.

(k) **Rejections**—All manuscripts which are rejected will no longer be returned to the authors. Those submitting papers should, therefore, ensure that they retain at least one copy and the reference numbers, if any, of the illustrations. The only exception to this will be those manuscripts with colour illustrations which will be returned *automatically* by Surface Mail.

(l) **Facsimile (FAX)**. All authors should send a Facsimile number whenever possible to speed communication; this particularly applies to those outside the United Kingdom. Manuscripts with no visual illustrations (X-rays/pathology) may be sent by facsimile.

3. Page proofs are sent to authors for corrections, which should be kept to a minimum; they must be clearly marked, and no extra matter added. Proofs should be returned within 5 days.

4. Orders for reprints must be sent when returning page proofs, and for this purpose special forms are supplied.

5. Editorial communications may be addressed to **The Editor, Journal of Laryngology and Otology, c/o Headley Brothers Ltd., The Invicta Press, Ashford, Kent TN24 8HH or sent by FAX (071-224 1645).**

6. **The annual subscription is £90.00 Institutions & Libraries US\$225.00; £80.00 Individuals US\$200.00; £45.00 Registrars, Residents and Interns.** (Those in training should submit a certificate from The Head of the Department giving details of their appointment; those who qualify must supply their *home* address for mailing direct). Claims to be made for missing issues within 6 months of each publication date.

7. Single copies of current or back numbers (when available) will be on sale at £12.00 each (including postage).

8. **BINDERS** to hold Journals for one year, available at £12.00 each.

9. **SUPPLEMENTS** published at 'irregular' intervals with subscription, available separately on request.

10. All subscriptions, advertising and business communications should be sent to the publishers, or subscription agents.

HEADLEY BROTHERS LTD,

THE INVICTA PRESS, ASHFORD, KENT.

© *Journal of Laryngology and Otology Ltd., 1991*

ISSN 0022-2151

Second class postage paid Rahway, N.J.

Postmaster: Send address corrections to The Journal of Laryngology and Otology, c/o Mercury

Airfreight International Ltd. Inc., 2323 Randolph Avenue, Avenel, N.J. 07001. Frequency of Publication: Monthly.

Stroboscope Generator 5012



the universal unit for diagnosis of functional disorders of the vocal chords

- simple operation
- high light intensity
- second light connection
- fast and sure triggering even with "poor" phonation
- display of phase, frequency and sound level
- application with rigid or flexible endoscopes (e. g. magnifying laryngoscope or nasopharyngoscope)
- integrated air insufflator to prevent fogging of magnifying laryngoscope
- can be used in conjunction with video systems and text generators .

Contact us for details:

**RICHARD
WOLF**



RICHARD WOLF U.K. Ltd.
P.O. Box 47, Mitcham,
Surrey CR4 4TT
Tel. (01) 6 40-30 54
Telex 886 329

G 005 / 1.88

ns into the
 gophony (lar"ing-gof o-ne) and as heard in auscultation of the
 ngophthisis (lar"ing-gof thi-sis) [laryngo- + Gr. phthisis] tuberculosis of the larynx.
 ngoplasty (lah-ring'go-plas'te) [laryngo- + Gr. plassein to mold] plastic surgery of the larynx.
 yngoplegia (lar"ing-go-ple'je-ah) [laryngo- + Gr. plēgē stroke + -ia] paralysis of the larynx.
 laryngoptosis (lah-ring'go-to'sis) [laryngo- + Gr. ptōsis fall] a lowering and mobilization of the larynx as sometimes seen in the aged.
 laryngopyocele (lah-ring'go-pi'o-sēl) a laryngocele containing pus.
 laryngorhinology (lah-ring'go-ri-nol'o-je) [laryngo- + Gr. rhis nose + -logy] the sum of what is known regarding the larynx and nose and their diseases.
 laryngorrhagia (lar"ing-go-ra'je-ah) [laryngo- + Gr. rhēgnynai to break] hemorrhage from the larynx.
 laryngorrhaphy (lar"ing-gor'ah-fe) [laryngo- + Gr. rhapsē suture] the operation of suturing the larynx.
 laryngorrhoea (lar"ing-go-re'ah) [laryngo- + Gr. rhoia flow] excessive secretion of mucus whenever the voice is used.
 laryngoscleroma (lah-ring'go-skle-ro'mah) [laryngo- + scleroma] scleroma of the larynx.
 laryngoscope (lah-ring'go-skōp) [laryngo- + Gr. skopein to examine] 1. an endoscope for use in direct visual examination of the larynx.
 LARYNGOSCOPE 2. official publication of the American Laryngological, Rhinological and Otological Society featuring clinical and research contributions in laryngology, otology, otoneurology, broncho-esophagology, head and neck and plastic surgery. Syn: The best in otolaryngology month after month.
 laryngoscopian (lah-ring'go-sko'pe-in) A person who subscribes to the LARYNGOSCOPE.
 laryngoscopic (lar'ing-go-skop'ik) pertaining to laryngoscopy.
 laryngoscopist (lar'ing-gos'ko-pist) an expert in laryngoscopy.
 laryngoscopy (lar'ing-gos'ko-pe) [laryngo- + Gr. skopein to examine] examination of the interior of the larynx, especially that performed with a speculum (direct laryngoscopy). direct l., direct visual examination of the interior of the larynx performed with a speculum or laryngeal mirror.

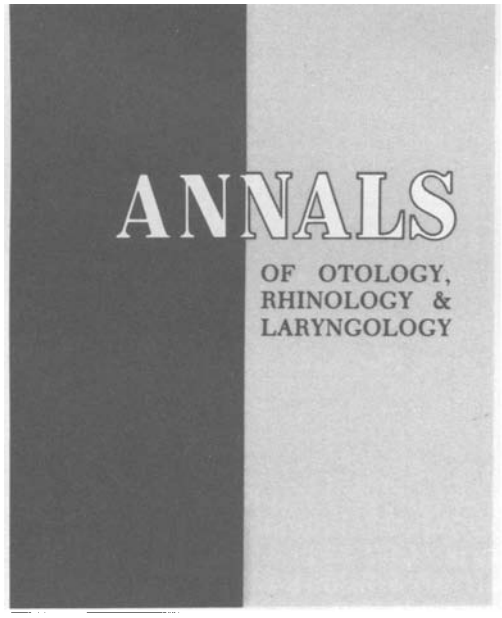
THE Laryngoscope

**Defining Otolaryngology
 Since 1896**

**Inquire:
 10 S. Broadway
 14th Floor
 St. Louis, MO 63102**

**Phone: 314-621-6550
 FAX: 314-621-6688**

Celebrating Our 100-Year Anniversary 1892 - 1992



- Monthly issues • Supplements
- Peer reviewed • Clinical and research
- Imaging case studies • Pathology consultations
- Letters to the editor • Book reviews

1992 ANNUAL SUBSCRIPTION RATES

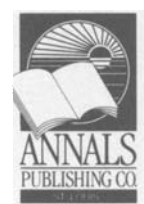
	Resident*	Individual*	Institutional
US	<input type="checkbox"/> \$48	<input type="checkbox"/> \$ 92	<input type="checkbox"/> \$138
Foreign	<input type="checkbox"/> \$60	<input type="checkbox"/> \$112	<input type="checkbox"/> \$158

*Individual, resident, and student subscriptions must be in the individual's name and must be billed to and paid for by the individual.

**NEW SUBSCRIBERS RECEIVE 2 ISSUES
 FREE WITH PAID SUBSCRIPTION**



**Mail to or call:
 ANNALS PUBLISHING CO
 4507 Laclede Avenue
 St Louis, Missouri 63108
 (314) 367-4987
 FAX (314) 367-4988**



J.L.O. (1984) LIMITED

Company limited by Guarantee

Reg No: 1865175 England

In 1984, The Journal ceased to become a Limited Company with shareholders and instead became a registered charity under the Companies Act, limited by guarantee and without having a share capital. A Memorandum of Association was drawn up and the Association acquired the assets of the Journal of Laryngology and Otology Limited. Former shareholders were invited to become members of the Association and all those who undertook to do so, gave a Guarantee that should the association need to be wound up, they would contribute a sum not exceeding £20.

Annual General Meeting. This is normally held each year in early November, and it is to the Members of the Association that invitations are issued. Any individual paying a full subscription who would like to become a member of the Association is asked to write to the Editor, c/o Headley Brothers, confirming that he or she will make such a guarantee of £20 if the occasion were to arise. Applications for membership may be made at any time. It is hoped that more full subscribers will take up this offer and attend the Annual General Meeting so that there can be a more lively exchange of views between them, and the Editorial staff and publishers.

*For Advertisement Rates
and Space in this
Journal*

apply to

The Advertisement Manager

THE JOURNAL OF
LARYNGOLOGY AND
OTOLOGY

Headley Brothers Limited
The Invicta Press
Ashford
Kent TN24 8HH
Tel: (0233) 623131

INTERCOLLEGIATE ASSESSMENT IN OTOLARYNGOLOGY

Royal College of Surgeons of
Edinburgh

Royal College of Surgeons of England

Royal College of Physicians and
Surgeons of Glasgow

Royal College of Surgeons in Ireland

The next Specialty Assessment in Otolaryngology will be held in the Royal College of Surgeons of England on 23/24 April 1992.




Regulations and application forms are available from the Secretariat, Intercollegiate Specialty Boards, 10 Hill Square, Edinburgh EH8 9DR. Closing date for receipt of applications is Friday, 28 February 1992.

Fee: £250

For vertigo

due to Ménière's syndrome

At the recommended dosage of three 16mg tablets daily, Serc-16 is a highly effective first-line therapy for vertigo due to Ménière's syndrome.

-  Regression of symptoms — if therapy commences in the initial stages¹
-  Not associated with Parkinsonian side-effects — unlike prochlorperazine²
-  Non-sedative³

Serc[®]-16

betahistine 16mg

Tackles the symptoms by treating the cause

Presentation: A white, flat round tablet imprinted '267' on one face, 'DUPHAR' on the reverse, each tablet containing 16mg betahistine dihydrochloride. Available in packs of 84 tablets. Basic NHS price £18.03. **Indications:** Vertigo, tinnitus and hearing loss associated with Ménière's syndrome. **Dosage and Administration:** *Adults:* Initially one tablet three times daily, taken preferably with meals. *Maintenance dose:* 24-48mg daily. *Children:* No dosage recommendations are made for children. **Contra-indications, Warnings, etc.:** *Contra-indications:* Phaeochromocytoma. *Precautions:* Clinical intolerance to Serc in bronchial asthma patients has not been shown, but caution should be exercised when administering this histamine analogue to bronchial asthma patients. Though an antagonism between Serc and antihistamines could be expected on a theoretical basis, no such

interactions have been reported. The usual precautions should be observed when administering Serc to patients in pregnancy. *Side-effects:* There has been a small number of reports of gastric upset. **Product Licence Number:** 0512/0088.

References: 1. Wilmot, T.J., *Clin. Otolaryngol.*, 1979; 4: 131-143. 2. Stephen, P.J. & Williamson, J., *Lancet*, 1984, ii: 1082-1083. 3. Data on file, Duphar Laboratories Limited. Further information is available from:

duphar

Duphar Laboratories Limited, Gaters Hill, West End, Southampton SO3 3JD. Tel: (0703) 472281.

EDITORIAL

It is always my pleasure at the end of each year to thank the assistant editors and advisors for all the hard work they have put in and also to thank those who have kindly accepted invitations to act as referees and give their advice and recommendations to papers within their particular field of expertise. The following have very generously given of their time to help us and this has, as always, been greatly appreciated:

C. M. Bailey
D. L. Baldwin
P. H. Beales
D. J. Brain
J. A. S. Carruth
A. D. Cheesman
Professor M. J. Cinnamond
Professor P. J. Cole
C. B. Croft
A. B. Drake-Lee
R. J. Earlam
M. J. Gleeson

A. Goode
J. M. Graham
H. J. Grant
Sir Donald Harrison
A. I. G. Kerr
A. G. Kerr
H. Ludman
V. J. Lund
W. S. Lund
P. McKelvie
I. S. Mackay

A. R. Maw
D. A. Moffat
D. G. Nancekievill
Valerie Newton
B. J. O'Reilly
S. H. Richards
Susan Snashall
Margaret Spittle
Professor P. M. Stell
B. Walton
P. C. Windle-Taylor

As readers will have noticed, during the course of this year we have added three new statisticians unto our number and this has been most helpful, not only in providing first class advice but also diluting the load and speeding up the through-put where such papers require this additional assessment. We welcome therefore Anthony Hughes (University of Bristol), Peter Kelly (University of Newcastle) and Gillian Raab (University of Edinburgh). May I also take this opportunity of thanking Professor Stephen Evans, who has kindly given of his services but now finds that his commitments are too great and therefore must leave us at the end of this year.

Readers will notice that we have added some articles of historical interest on the surgery of the labyrinth, and a few other articles of general interest or of a practical nature to make for lighter reading over the Christmas period. You can also try your hand at the quiz, the crossword puzzle and translating a little Latin verse. Merry Christmas and a Happy New Year.

Editor.

