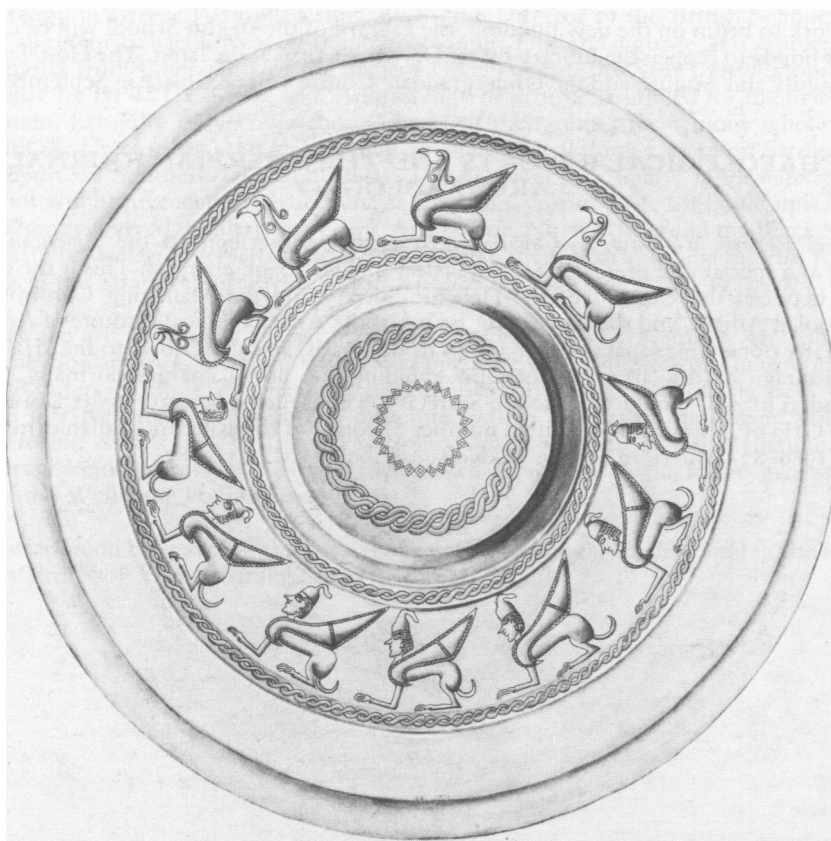


# ARCHAEOLOGICAL REPORTS FOR 1985-86



## CONTENTS

ARCHAEOLOGY IN GREECE, 1985-86  
ARCHAEOLOGY IN ETRURIA, 1980-85  
ROME AND LATIUM VETUS, 1980-85  
THE GOULANDRIS MUSEUM OF CYCLADIC AND  
ANCIENT GREEK ART

*H. W. Catling*  
*T. C. B. Rasmussen*  
*T. J. Cornell*  
  
*A. C. Renfrew*

PUBLISHED BY THE COUNCIL OF THE SOCIETY  
FOR THE PROMOTION OF HELLENIC STUDIES  
AND  
THE MANAGING COMMITTEE  
OF THE  
BRITISH SCHOOL AT ATHENS  
1986

## THE BRITISH SCHOOL AT ATHENS CENTENARY APPEAL

The British School at Athens celebrates its centenary in 1986. It is marking this occasion with events and lectures in Athens and in Britain. It has also launched a Public Appeal for at least £250,000. The intention is to use part of this sum for the construction of an extra floor to its library, which will contain new reading rooms, improved facilities for drawing and photography, rooms for typing and computing and an enlarged librarian's office. A second object of the appeal is the establishment of a Bursary Fund from which grants may be made to graduate students (of Greek or Cypriot nationality) at Greek universities, or to scholars employed by Greek universities or in the Archaeological Services of Greece and Cyprus, to enable them to visit British universities and museums.

If you would like to help the School in these new ventures you are invited to send a cheque to, or to ask for further information about the Appeal and its aims from, The Secretary, British School at Athens, 31-34 Gordon Square, London, WC1H 0PY.

## THE BRITISH SCHOOL AT ATHENS: LIBRARY CLOSURE

To allow work to begin on the new building, the Library of the British School will be closed from 1st July: it is hoped to reopen the Library by 1st December 1986 at the latest. The Hostel will remain open during July and August, and the Undergraduate Course will take place in September, as usual.

## ARCHAEOLOGICAL REPORTS AND THE AMERICAN JOURNAL OF ARCHAEOLOGY

*Archaeological Reports* are now also available to private subscribers to the *American Journal of Archaeology* at a special rate of £6 or \$12 (the latter includes bank charges). This is the result of an agreement between the Council of the Hellenic Society and the Managing Committee of the British School at Athens, and the Governing Board of the Archaeological Institute of America. *AR* is not normally obtainable separately on a subscription basis, and subscribers to the *AJA* who wish to take advantage of this arrangement, also avoiding the postal charges normally payable by overseas readers of *AR*, should write to the Secretary, The Hellenic Society, 31-34 Gordon Square, London, WC1H 0PP, England. A limited number of copies of this issue are available; to receive the next issue (1986-87) American readers should subscribe by 1st July 1987.

## CONTENTS

	Page
CATLING, H. W., <i>Archaeology in Greece, 1985–86</i> .....	3
RASMUSSEN, T. C. B., <i>Archaeology in Etruria, 1980–85</i> .....	102
CORNELL, T. J., <i>Rome and Latium Vetus, 1980–85</i> .....	123
RENFREW, A. C., <i>The Goulandris Museum of Cycladic and Ancient Greek Art</i> .....	134

These *Archaeological Reports* are published by the Society for the Promotion of Hellenic Studies and the British School at Athens for their subscribers. They are now also available to subscribers to the *American Journal of Archaeology* (see facing page) and to members of the Society for the Promotion of Byzantine Studies under similar terms. Members of the public can purchase copies from the Secretary, The Society for the Promotion of Hellenic Studies, 31–34 Gordon Square, London, WC1H 0PP, England.

'Archaeology in Greece', compiled annually by the Director of the British School, is the only account of all recent archaeological work in Greece in the English language. It is supplemented each year by reports from other parts of the ancient Greek world: this year's articles on 'Rome and Latium Vetus' by Dr T. J. Cornell, and 'Archaeology in Etruria' compiled for the first time by Dr T. Rasmussen, naturally only cover those aspects of their respective regions where they make contact with the Greeks. Mr D. Ridgway will again be contributing a piece on Sardinia, together with his report on Southern Italy and Dr R. J. A. Wilson's on Sicily, in *Archaeological Reports 1987–88*. This will be preceded by an account of work in Cyprus by Mr M. Loulloupis in *AR 1986–87*. Other regions covered regularly are Greek Asia Minor, North Africa and the Black Sea. It is also intended that *Archaeological Reports 1986–87* should carry the fourth and final interim report on the excavations at the Stratigraphical Museum in Knossos by Professor P. M. Warren.

This year we are carrying a special article by Professor A. C. Renfrew on Athens' newest museum, the Goulandris Collection, which was opened by the Minister of Culture in January of this year. Readers of these *Reports* may be interested in the second of the new bulletins of acquisitions of Greek material by British museums, which appears in the current volume of the *Journal of Hellenic Studies* (vol. cvi): it is a summary distribution list of the Wellcome Collection, now dispersed among museums around the United Kingdom through the generosity of the Trustees of the Wellcome Foundation.

The illustration on the cover of this issue is of a complete bronze shield found in the Idaean Cave in Crete by Professor Y. Sakellarakis (p. 91).

*Editor:* Dr A. J. N. W. Prag, The Manchester Museum, The University, Manchester, M13 9PL, England.

© Authors, the Society for the Promotion of Hellenic Studies, and the British School at Athens.

Printed in England by Stephen Austin and Sons Ltd., Hertford.