

A List of Parasitic Copepoda

LERNAEOPODIDAE.				
Parasite	Author	Collector	Location	Host
<i>C.(?) quadrata</i>	(Bassett-Smith)	"	Gill-rakers	<i>Callionymus lyra</i>
<i>Brachiella bispinosa</i>	Nordmann	"	"	<i>Trigla gurnardus</i>
"	"	"	"	<i>T. cuculus</i>
"	"	"	"	<i>T. lyra</i>
<i>B. merluccii</i>	Bassett-Smith	"	Points of gill-rakers	<i>Merluccius vulgaris</i>
<i>B. obesa</i>	(Krøyer)	M.	Gill arches	<i>Trigla gurnardus</i>
<i>B. thynni</i>	Cuvier	B.	Behind pectoral fins	<i>Thynnus thynnus</i>
<i>B. triglae</i>	Claus	"	Gills	<i>Trigla gurnardus</i>
"	"	"	"	<i>T. cuculus</i>
"	"	"	"	<i>T. hirundo</i>
<i>Epibrachiella [Thysanote] impudica</i>	(Nordmann)	B. & M.	Inside of operculum	<i>Trigla gurnardus</i>
"	"	"	"	<i>T. cuculus</i>
"	"	"	"	<i>T. hirundo</i>
<i>Parabrachiella insidiosa</i>	(Heller)	"	Gill-rays	<i>Merluccius vulgaris</i>
HERPYLLOBIIDAE.				
<i>Hedyphanelia superba</i>	Leigh-Sharpe	L.	Dorsal surface	<i>Gattyana cirrosa</i>
<i>Phallusiella psalliota</i>	"	"	"	<i>Lagisca floccosa</i>
<i>P. vera</i>	"	"	"	<i>Malmgrenia castanea</i>
<i>Sarsilenium crassirostris</i>	(M. Sars)	V.	"	<i>Evarne impar</i>

NOTE I. *Parasitology*, xviii. 153, line 23. The implied resemblance is between the second maxillae of *Nicotohœ* and the first maxillae of *Lernaeopoda*.

NOTE II. ON THE BULLA OF *CLAVELLA DEVASTATRIX*. In *Parasitology*, xvii. 197, the new species *Clavella devastatrix* was but imperfectly described since the available specimens lacked an undamaged bulla. I am now able to give a figure (Fig. 1) of a complete bulla. The bulla is ellipsoidal with its minor axis in continuity with the manubrium; cf. xvii. 196, Fig. 1.

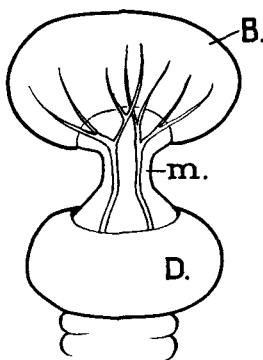


Fig. 1. *Clavella devastatrix* ♀. B = bulla; m = manubrium; D = disc.

(MS. received for publication 12. VIII. 1926.—Ed.)

ERRATA. VOL. xviii.

- P. 151, line 9. Read biramous for uniramous (see Fig. 4).
 P. 153, line 15. Delete the words in parenthesis.
 P. 276, line 6. Read median for medium.