

**SPECIAL SECTION: Mapping the Terrain of  
Americanist Archaeology**

- 213 Setting Theoretical Egos Aside: Issues and Theory  
in North American Archaeology  
*Michelle Hegmon*
- 245 The Theoretical Landscape and the Methodological  
Development of Archaeology in Latin America  
*Gustavo G. Politis*
- 273 Beyond the Margin: American Indians, First  
Nations, and Archaeology in North America  
*Joe E. Watkins*

**ARTICLES**

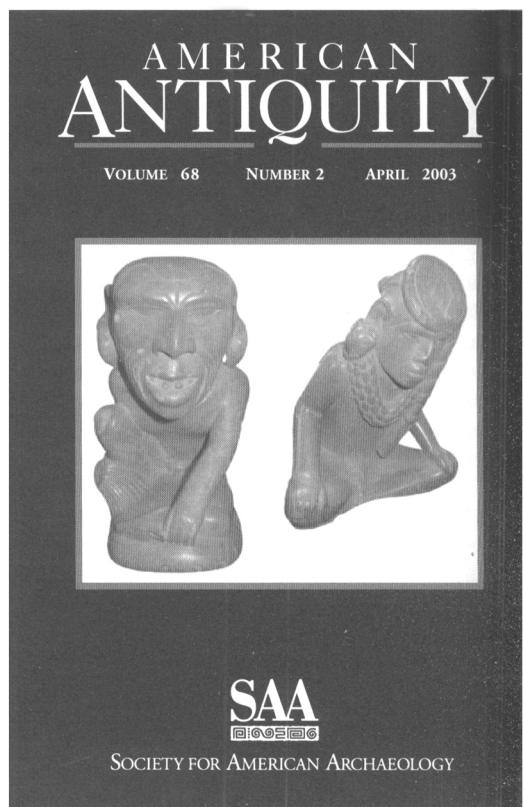
- 287 The Sourcing and Interpretation of Cahokia-Style  
Figurines in the Trans-Mississippi South and  
Southeast  
*Thomas E. Emerson, Randall E. Hughes, Mary R.  
Hynes, and Sarah U. Wisseman*
- 314 The Local and the Distant in the Origin of Casas  
Grandes, Chihuahua, Mexico  
*Michael E. Whalen and Paul E. Minnis*

**REPORTS**

- 333 Clovis Hunting Strategies, or How to Make Out on  
Plentiful Resources  
*Nicole M. Waguespack and Todd A. Surovell*
- 353 The Ventana Complex: New Dates and New Ideas on its Place in Early Holocene Western Prehistory  
*Bruce B. Huckell and C. Vance Haynes, Jr.*
- 372 Marks of Distinction: Rock Art and Ethnic Identification in the Great Basin  
*Angus R. Quinlan and Alanah Woody*

**COMMENTS**

- 391 Three Ounces of Sea Shells and One Fish Bone Do Not a Coastal Migration Make  
*Christy G. Turner II*
- 396 On the Weight of the Evidence from Cross Creek: A Reply to Turner  
*Richard T. Fitzgerald and Terry L. Jones*
- 400 Disaster or Catastrophe: Human Adaptation to High- and Low-Frequency Landscape Processes—A Reply to  
Ensor, Ensor, and DeVries  
*Michael R. Waters and John C. Ravesloot*



## NOTICE TO AUTHORS

*Latin American Antiquity* publishes original papers on the archaeology, prehistory, and ethnohistory of Latin America, i.e., Mesoamerica, Central America, and South America, together with culturally affiliated adjacent regions. Papers may also treat more general theoretical and methodological issues with relevance to Latin America. Authors submit manuscripts to the editor for consideration as ARTICLES or REPORTS in English, Spanish, or Portuguese. Authors should submit an original and three copies of their manuscripts (including all figures, tables, references, and notes), along with an abstract in both English and Spanish. Detailed information on policy, style, and technical matters of manuscript preparation is given in English in the "Editorial Policy, Information for Authors, and Style Guide for *American Antiquity* and *Latin American Antiquity*," which appeared in September 1992 (vol. 3, no. 3) and in Spanish in "Código editorial, información para autores y guía estilística para *American Antiquity* and *Latin American Antiquity*," which appeared in July 1997 (vol. 8, no. 2). This information is also available in English through the World Wide Web at <http://www.saa.org/Publications/StyleGuide/styframe.html>. For additional information, updates, or clarification, consult the managing editor at the SAA office in Washington, D.C.

## BOARD OF DIRECTORS OF THE SOCIETY FOR AMERICAN ARCHAEOLOGY

### *Officers*

*President:* LYNNE SEBASTIAN, SRI Foundation, 333 Rio Rancho Dr. NE, Suite 103, Rio Rancho, NM 87124

*Secretary:* DEAN SNOW, Department of Anthropology, Pennsylvania State University, 409 Carpenter Bldg., University Park, PA 16802

*Treasurer:* DONALD J. WEIR, CCRG Inc, 2530 Spring Arbor Rd., Jackson, MI 49203-3602

*Treasurer-Elect:* GEORGE H. ODELL, 600 S College Ave., Department of Anthropology, University of Tulsa, Tulsa, OK 74104-3126

### *Board Members-at-Large*

LUIS ALBERTO BORRERO, CONICET, Tucuman 2146-Piso 7, Buenos Aires 1050, Argentina

JON CZAPLICKI, Bureau of Reclamation, PXAO-1500 Phoenix Area Office, PO Box 81169, Phoenix, AZ 85069-1169

PATRICIA A GILMAN, Department of Anthropology, University of Oklahoma, Norman, OK 73019-0001

MADONNA MOSS, Department of Anthropology, 1218 University of Oregon, Eugene, OR 97403-1205

NELLY ROBLES GARCIA, Pino Suarez 715, Oaxaca OAX 68000, Mexico

JOE WATKINS, PO Box 30992, Albuquerque, NM 87190-0992

### *Ex-Officio Board Member*

TOBI A. BRIMSEK, Society for American Archaeology, 900 Second St NE, Suite 12

## ARTICLES

- 115 The Theoretical Landscape and the Methodological Development of Archaeology in Latin America  
*Gustavo G. Politis*
- 143 La Orientación Este De Los Entierros Aborígenes En Cuevas De Cuba: Remate De Una Fábula  
*Gabino La Rosa Corzo*
- 159 Maya Calendar Reform? Evidence from Orientations of Specialized Architectural Assemblages  
*Anthony F. Aveni, Anne S. Dowd, and Benjamin Vining*

## REPORTS

- 179 Sak Tz'it', a Classic Maya Center: A Locational Model Based on GIS and Epigraphy  
*Armando Anaya Hernández, Stanley P. Guenter, and Marc U. Zender*
- 193 Geologic Water Storage in Precolumbian Peru  
*Jerry P. Fairley, Jr.*
- 207 Caves and Ancient Maya Ritual Use of *Jute*  
*Christina T. Halperin, Sergio Garza, Keith M. Prufer, and James E. Brady*

## COMMENTS

- 221 Can We Read Cosmology in Ancient Maya City Plans? Comment on Ashmore and Sabloff  
*Michael E. Smith*
- 229 Interpreting Ancient Maya Civic Plans: Reply to Smith  
*Wendy Ashmore and Jeremy A. Sabloff*

## BOOK NOTES

- 237 War and Society in the Ancient and Medieval Worlds: Asia, the Mediterranean, Europe, and Mesoamerica, edited by Kurt Raaflaub and Nathan Rosenstein  
*Jay Silverstein*
- 238 Theaters of Conversion: Religious Architecture and Indian Artisans in Colonial Mexico, by Samuel Y. Edgerton  
*Enrique Rodríguez-Alegría*
- 238 Mesoamerican Healers, edited by Brad R. Huber and Alan R. Sandstrom  
*Allen Christenson*
- 239 Maiolica Olé: Spanish and Mexican Decorative Traditions, Featuring the Collection at the Museum of International Folk Art, by Florence C. Lister and Robert H. Lister  
*Thomas H. Charlton*

*On the Cover:* Photograph of spire-lopped *jute* (from "Caves and Ancient Maya Ritual Use Of *Jute*," by Christina T. Halperin, Sergio Garza, Keith M. Prufer, and James E. Brady, page 209).

Ⓢ The paper used in this publication meets the requirements of ANSI/NISO Z39.48-1992  
(Permanence of Paper).