

Review Article

Cite this article: Castaldelli-Maia JM, Marziali ME, Lu Z, Martins SS (2021). Investigating the effect of national government physical distancing measures on depression and anxiety during the COVID-19 pandemic through meta-analysis and meta-regression. *Psychological Medicine* **51**, 881–893. <https://doi.org/10.1017/S0033291721000933>

Received: 22 October 2020
Revised: 24 February 2021
Accepted: 27 February 2021
First published online: 2 March 2021

Key words:

Anxiety; COVID-19; depression; public transport; social isolation

Author for correspondence:

João M. Castaldelli-Maia,
E-mail: jmcaia2@gmail.com

Investigating the effect of national government physical distancing measures on depression and anxiety during the COVID-19 pandemic through meta-analysis and meta-regression

João M. Castaldelli-Maia , Megan E. Marziali, Ziyin Lu and Silvia S. Martins

Department of Epidemiology, Mailman School of Public Health, Columbia University, New York, NY 10032, USA

Abstract

Background. COVID-19 physical distancing measures can potentially increase the likelihood of mental disorders. It is unknown whether these measures are associated with depression and anxiety.

Objectives. To investigate meta-analytic global levels of depression and anxiety during the COVID-19 pandemic and how the implementation of mitigation strategies (i.e. public transportation closures, stay-at-home orders, etc.) impacted such disorders.

Data sources. PubMed, MEDLINE, Web of Science, BIOSIS Citation Index, Current Content Connect, PsycINFO, CINAHL, medRxiv, and PsyArXiv databases for depression and anxiety prevalences; Oxford Covid-19 Government Response Tracker for the containment and closure policies indexes; Global Burden of Disease Study for previous levels of depression and anxiety.

Study eligibility criteria. Original studies conducted during COVID-19 pandemic, which assessed categorical depression and anxiety, using PHQ-9 and GAD-7 scales (cutoff ≥ 10).

Participants and interventions. General population, healthcare providers, students, and patients. National physical distancing measures.

Study appraisal and synthesis methods. Meta-analysis and meta-regression.

Results. In total, 226 638 individuals were assessed within the 60 included studies. Global prevalence of both depression and anxiety during the COVID-19 pandemic was 24.0% and 21.3%, respectively. There were differences in the prevalence of both anxiety and depression reported across regions and countries. Asia (17.6% and 17.9%), and China (16.2% and 15.5%) especially, had the lowest prevalence of both disorders. Regarding the impact of mitigation strategies on mental health, only public transportation closures increased the prevalence of anxiety, especially in Europe.

Limitations. Country-level data on physical distancing measures and previous anxiety/depression may not necessarily reflect local (i.e. city-specific) contexts.

Conclusions and implications of key findings. Mental health concerns should not be viewed only as a delayed consequence of the COVID-19 pandemic, but also as a concurrent epidemic. Our data provide support for policy-makers to consider real-time enhanced mental health services, and increase initiatives to foster positive mental health outcomes.

Introduction

COVID-19 is an unprecedented health emergency, affecting millions of individuals across the globe (Velavan & Meyer, 2020). SARS-Coronavirus-2, the virus which causes COVID-19, is transmitted person-to-person via respiratory droplets (Wiersinga, Rhodes, Cheng, Peacock, & Prescott, 2020). In order to prevent and lessen spread, countries began implementing mitigation strategies, such as stay-at-home or shelter-in-place orders, international travel constraints, closure of schools and workplaces, and movement limitations (Hale et al., 2020). Despite taking necessary public health measures, researchers have speculated that these measures could increase feelings of social isolation and loneliness (Marziali et al., 2020); this is of importance, as previous studies have demonstrated that social isolation could impact the likelihood of mental disorders (Torales, O'Higgins, Castaldelli-Maia, & Ventriglio, 2020) and physical health outcomes (House, Landis, & Umberson, 1988). As of yet, it still remains unclear to what extent the COVID-19 mitigation strategies could impact mental health. Thus, it is imperative to investigate the levels of mental health disorders and the possible impacts of social distancing measures on mental health outcomes (Carvalho Aguiar Melo & de Sousa Soares, 2020).

Before the pandemic, depression and anxiety were the most prevalent mental health disorders in the world (GBD 2017 Diseases and Injuries Collaborators et al., 2018). Depression can affect one in every five people in some countries (Bromet et al., 2011); anxiety disorders could be even more prevalent, with more than a quarter of individuals reporting these disorders during the lifetime in some countries (Kessler et al., 2007). These mental health disorders have also been

© The Author(s) 2021. Published by Cambridge University Press. This is an Open Access article, distributed under the terms of the Creative Commons Attribution licence (<http://creativecommons.org/licenses/by/4.0/>), which permits unrestricted re-use, distribution, and reproduction in any medium, provided the original work is properly cited.

connected to social isolation during COVID-19 in local studies (Al-Qahtani, Elgzar, & Ibrahim, 2020). During the COVID-19 pandemic, the levels of such disorders have increased. A meta-analysis with 13 studies that included 33 062 healthcare workers during COVID-19 reported a prevalence of 23.2% and 22.8% for anxiety and depression, respectively (Pappa *et al.*, 2020). These prevalences are greater than those found in the pre-COVID-19 era (GBD 2017 Diseases and Injuries Collaborators, 2018). Several studies have assessed depression and anxiety using scales involving self-reporting during the pandemic (Ahmad, Rahman, & Agarwal, 2020; Ahn *et al.*, 2020; Ahorsu *et al.*, 2020; Alyami *et al.*, 2020; Amerio *et al.*, 2020; Bachilo, Barylnik, Shuldyakov, Efremov, & Novikov, 2020; Bauer *et al.*, 2020; Bauerle *et al.*, 2020; Chang, Yuan, & Wang, 2020; Chen *et al.*, 2020; Choi, Hui, & Wan, 2020; Civantos *et al.*, 2020; Consolo, Bellini, Bencivenni, Iani, & Checchi, 2020; Fancourt, Steptoe, & Bu, 2020; Filho *et al.*, 2020; Gao *et al.*, 2020; Guo *et al.*, 2020; Hu *et al.*, 2020; Islam, Ferdous, & Potenza, 2020; Jia *et al.*, 2020; Johnson, Ebrahimi, & Hoffart, 2020; Juanjuan *et al.*, 2020; Kantor & Kantor, 2020; Khanna, Honavar, Metla, Bhattacharya, & Maulik, 2020; Killgore, Cloonan, Taylor, & Dailey, 2020; Lai *et al.*, 2020; Lin *et al.*, 2020; Liu, Zhang, Wong, Hyun, & Hahm, 2020a; J. Liu *et al.*, 2020b; Mahendran, Patel, & Sproat, 2020; Mechili *et al.*, 2020; Muñoz-Navarro, Vindel, Schmitz, Cabello, & Fernández-Berrocal, 2020; Naser *et al.*, 2020; Nguyen *et al.*, 2020; Olaseni, Akinsola, Agberotimi, & Oguntayo, 2020; Pieh, Budimir, & Probst, 2020; Qian *et al.*, 2020; Que *et al.*, 2020; Saddik, Hussein, Albanna, *et al.*, 2020a; Saddik, Hussein, Sharif-Askari, *et al.*, 2020b; Salman, Asif, *et al.*, 2020a; Salman, Raza, *et al.*, 2020b; Shi *et al.*, 2020; Sigdel *et al.*, 2020; Solomou & Constantinidou, 2020; Stickley, Matsubayashi, Sueki, & Ueda, 2020; Stojanov *et al.*, 2020; Sun, Goldberg, Lin, Qiao, & Operario, 2020; Tang *et al.*, 2020; Temsah *et al.*, 2020; Ueda, Stickley, Sueki, & Matsubayashi, 2020; Wang *et al.*, 2020; Weilenmann *et al.*, 2020; Xiao *et al.*, 2020; Yamamoto, Uchiyumi, Suzuki, Yoshimoto, & Murillo-Rodriguez, 2020; Zhang *et al.*, 2020; Zhao, Peng, Liu, & Ouyang, 2020a; R. Zhao *et al.*, 2020b; Zhou *et al.*, 2020; Zhu *et al.*, 2020), and the geographic location within which the study is focused. There is a need for meta-analytic investigations generating global prevalence measures for both depression and anxiety during the pandemic, with additional exploration via subgroup analysis.

Further, there are mixed findings regarding the effect of mitigation strategies on depression and anxiety during this pandemic. Previous research has demonstrated marked increases in online search trends for mental health topics (i.e. sleep disturbances, negative thoughts, anxiety, suicidal ideation) prior to the implementation of stay-at-home orders in the USA (Jacobsen *et al.*, 2020). Further, an online qualitative study evaluated focus groups during the beginning of the social distancing measures in the UK, where they found negative impacts on well-being and mental health after implementation of mitigation strategies (Williams, Armitage, Tampe, & Dienes, 2020). Individuals who had lower pay, or vulnerable employment, were the most affected (Williams *et al.*, 2020). Thus, the effects of these physical distancing strategies may be time-sensitive. Moreover, there are varying ongoing physical distancing measures (i.e. school closures, workplace closures, public events cancellations, restrictions on the size of gatherings, public transport closures, stay-at-home orders, restrictions on internal movement between cities and regions within a country, and international travel controls) during different periods, depending on the location (Hale *et al.*, 2020). There is a need to explore whether these strategies have lasting impacts on

depression and anxiety, taking different time of exposure thresholds to such physical distancing measures into account.

The present study aims to (1) investigate meta-analytic global levels of depression and anxiety during the COVID-19 pandemic, and (2) explore the effects of these mitigation strategies on depression and anxiety.

Methods

Study design

We first conducted a meta-analysis of studies related to the COVID-19 pandemic which assessed depression and anxiety using PHQ-9 and GAD-7 scales. Subgroup analysis for region of the world, country, type of population, and coverage was also carried out. Then, we collected national data regarding the implementation of physical distancing measures and mitigation strategies (Hale *et al.*, 2020), along with the previous levels of anxiety and depression from a global database (GBD 2017 Diseases and Injuries Collaborators *et al.*, 2018). These data were included in meta-regression models for the investigation of time-sensitive effects of mitigation strategies on depression and anxiety, adjusted for previous levels of such disorders and other possible confounders.

Review guidelines and registration

This study followed the PRISMA statement for a transparent report of systematic reviews and meta-analysis (Moher, Liberati, Tetzlaff, Altman, & Group, 2009) and MOOSE guidelines for Meta-analysis Of Observational Studies in Epidemiology (Stroup *et al.*, 2000). Online Supplementary Figs S1 and S2, respectively, present PRISMA and MOOSE checklists reporting the page of the manuscript in which we consider that each item was addressed. This study was registered at the Center for Open Science/Open Science Framework (Castaldelli-Maia, 2020).

Search strategy

We searched PubMed, MEDLINE, Web of Science, BIOSIS Citation Index, Current Content Connect, PsycINFO, and CINAHL databases. All searches were conducted with an end date of 29 July 2020. Search terms used were: [(sars-cov-2 OR coronavir* OR alpha-coronavirus OR betacoronavirus OR COVID OR COVID-19) AND (PHQ-9 or GAD-7)]. As this topic is developing quickly, we accessed pre-print servers medRxiv and PsyArXiv using the above search terms. We also searched the WHO database which includes COVID literature (cite) for studies published by the same date, using the following search terms: (PHQ-9 or GAD-7). In addition to MEDLINE, this database also includes WHO COVID, Elsevier, Lanzhou University/CNKI, LILACS, and WPRIM databases.

Screening and eligibility

We first removed duplicates from our search results. Screening and eligibility were performed by three researchers independently (JMCM, MEM, ZL). Studies that were written in Chinese were screened by two researchers (JMCM, ZL). Disagreement on the inclusion of a study based on the title or abstract resulted in the study being retained for the next screening stage. We did not find articles in languages other than English and Chinese.



PRISMA 2009 Flow Diagram

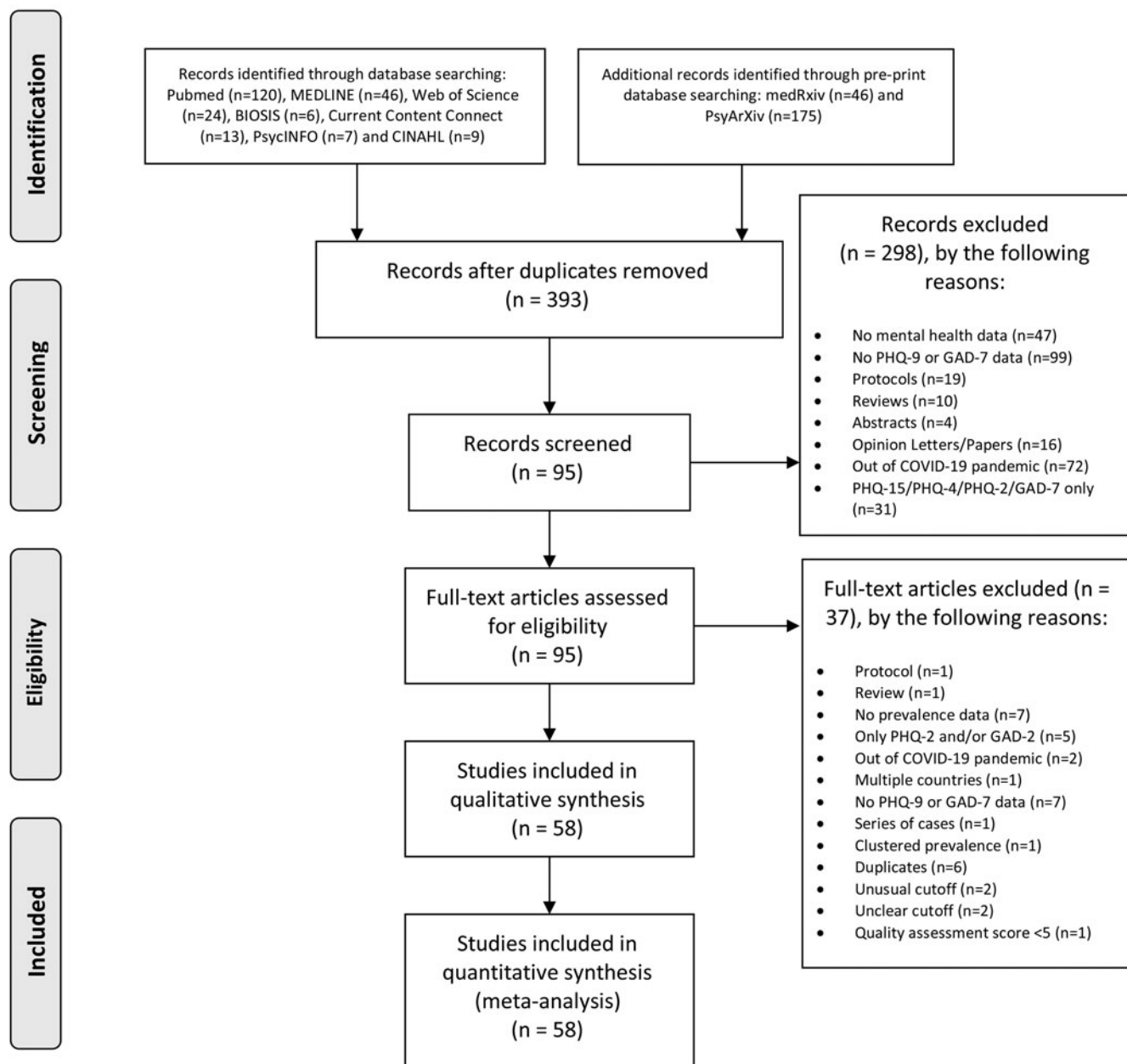


Fig. 1. PRISMA Flow Diagram.

Reasons for the exclusion of full texts were collected and presented in the PRISMA Flow Diagram (Fig. 1).

We included studies that reported categorical assessment of anxiety and depression using GAD-7 and PHQ-9 scales during the COVID-19 pandemic. Randomized controlled trials, cohort studies, case-control studies, and cross-sectional studies were included. Pre-prints and letters were included if they described the original research.

Data extraction

Data were extracted by two of the three independent reviewers (JMCM, MEM, ZL). Descriptive variables extracted were setting (i.e. country), population type (e.g. pregnant women and children), study design (e.g. cohort and case-control), follow-up time, nature of the control group, number of cases, number of controls, age, and gender. Randomized controlled trials, for this

review, were treated as cohort studies. The timepoint for data extraction in prospective studies was either before the intervention (i.e. clinical trials) or during the COVID-19 pandemic (i.e. cohort studies). Data were stored in Excel version 16.16.11.

Quality assessment

The purpose of this appraisal was to assess the methodological quality of the included studies and to determine the extent to which a study has addressed the possibility of bias in its design, conduct and analysis. All studies included in the present systematic review were subjected to the Joanna Briggs Institute Checklist for Analytical Cross-Sectional Studies (The Joanna Briggs Institute, 2017), which assesses sample frame, process and size, setting description, data analysis coverage, valid and reliable assessment methods, appropriate statistical analysis, and an adequate response rate.

Measures

Apart from outcome (depression and anxiety) and exposure (physical distancing measures) variables that are further explained, the present study sought the following data from each included study: the number of individuals enrolled in the study; mean age, standard deviation, and minimum/maximum age range of participants (or median and interquartile range); the proportion of women included; whether the study was nationally representative; whether the study was peer-reviewed; format of data collection (i.e. online); and geographic location, including city, state, and country. Subsequently, we collected data on the prevalence of depression and anxiety, prior to the COVID-19 pandemic, within each country included a review from the Global Burden of Disease (GBD) Study 2017; this data source reports estimated prevalence and burden due to anxiety and depression for all the countries included in the present study. Data contained within the GBD were extracted from censuses, household surveys, civil registration and vital statistics, disease registries, health service use, air pollution monitors, satellite imaging, disease notifications, and other sources (GBD 2017 Diseases and Injuries Collaborators *et al.*, 2018).

Anxiety and depression

The Patient Health Questionnaire-9 (PHQ-9) (Kroenke, Spitzer, & Williams, 2001) is a screening instrument for depressive disorders. It is composed of nine basic items based on the DSM-IV diagnostic criteria for major depressive disorder. The questions assess the frequency of depressive symptoms in the last 2 weeks. The respondents answer on a scale from 0 (not at all) to 3 (nearly every day). Several studies have used the cut-off ≥ 10 to define clinically relevant depression (online Supplementary Table S1). The Generalized Anxiety Disorder-7 (GAD-7) is a screening instrument for anxiety symptoms (Spitzer, Kroenke, Williams, & Löwe, 2006). The GAD-7 is a validated scale that measures anxiety with seven self-rating items on a four-point scale, similarly to PHQ-9. A cut-off ≥ 10 has been used by several studies to define clinically relevant anxiety (online Supplementary Table S1). Both the PHQ-9 and GAD-7 have excellent psychometric properties (Kroenke *et al.*, 2001; Spitzer *et al.*, 2006).

Exposure: implementation of physical distancing strategies

We collected national data from the Oxford Covid-19 Government Response Tracker (Hale *et al.*, 2020). All

containment and closure policies were included in the present study, as follows:

- School closures (0 – no measures; 1 – recommend closing; 2 – require closing only some levels or categories; 3 – require closing all levels);
- Workplace closures (0 – no measures; 1 – recommend closing or recommend work from home; 2 – require closing or work from home for some sectors or categories of workers; 3 – require closing or work from home for all-but essential workplaces);
- Cancellation of public events (0 – no measures; 1 – recommend cancelling; 2 – require cancelling);
- Restrictions on gatherings (0 – no restrictions; 1 – restrictions on very large gatherings above 1000 people; 2 – restrictions on gatherings between 101 and 1000 people; 3 – restrictions on gatherings between 11 and 100 people; 4 – restrictions on gatherings of 10 people or less);
- Public transportation closures (0 – no measures; 1 – recommend closing or significantly reduce volume/route/means of transport available; 2 – require closing or prohibit most citizens from using it);
- Stay at home requirements (0 – no measures; 1 – recommend not leaving house; 2 – require not leaving house with exceptions for daily exercise, grocery shopping, and ‘essential’ trips; 3 – require not leaving house with minimal exceptions);
- Restrictions on internal movement: record restrictions on internal movement between cities/regions (0 – no measures; 1 – recommend not to travel between regions/cities; 2 – internal movement restrictions in place); and
- International travel controls: record restrictions on international travel for foreign travelers (0 – no restrictions; 1 – screening arrivals; 2 – quarantine arrivals from some or all regions; 3 – ban arrivals from some regions; 4 – ban on all regions or total border closure).

For each study included in the meta-analysis, we calculated the mean of the daily ordinal score of each of the above indexes, during two timeframes:

- 2-week: weeks before the start date of the study until the end date of the study; and
- 4-week: weeks before the start date of the study until the end date of the study.

Statistical analysis

We included all the rates (crude number of cases/total number of individuals) in separate meta-analysis models for depression (PHQ-9 ≥ 10) and anxiety (GAD-7 ≥ 10). One study provided weighted rates for the outcomes only (Fancourt, Steptoe, & Bu, 2020). We used a random-effects model because high heterogeneity was expected. We calculated I^2 as a measure of between-study heterogeneity. Data were analyzed using OpenMetaAnalyst (Wallace *et al.*, 2012), which makes use of R metafor package (Viechtbauer, 2010). The threshold for significance was set to p values of less than 0.05. In addition, we carried out further subgroup analysis models by population type (general, healthcare providers, students, patients, and mixed), region of the world (Asia, Europe, and Other), country (China and other), income level (high-income, and low- and middle-income), and non-national status (local studies were defined as those restricted to either a city or a state/province/region within a country, *v.* national studies).

Finally, we investigated the impact of physical distancing measures on depression and anxiety through meta-regression models (Higgins & Thompson, 2004). Separate models were carried out for different timeframes of physical distancing measures (2 and 4 weeks). Models adjusted for gender, sub-populations, timepoint when study began, region of the world, local status, and previous levels of either depression or anxiety, depending on the outcome. Country indicators were not included in these models because of the strong correlation with earlier levels of depression and anxiety variables, which were collected based on previous data by each country. Meta-regression was used instead of subgroup analyses (i.e. different levels of social measures implementation) to allow for the use of continuous and multiple covariates. The random-effects meta-regression used residual restricted maximum likelihood to measure between-study variance (τ^2) with a Knapp-Hartung modification as recommended models (Higgins & Thompson, 2004). In the case of significant results for physical distancing measures, sensitivity analyses were carried out including adjustments for peer-review status and quality assessment scores of the studies.

Results

Online Supplementary Table S1 presents the key-information of the 60 studies included. Eight studies were split into subsamples, and two studies reported the same sample. We included 67 samples in the meta-analysis models. All studies were conducted in 2020 (compiled date range of study initiation to closure: 24 January–31 May), with a mean length of 15.4 days. In total, 226 638 individuals were included, with an average of 3382 individuals per study. The mean age was 33.8 (range: 13–89) among samples that provided data on mean age and range, and the proportion of females included was 61.9% (range: 0–100). Few samples were representative (5.9%, $N = 4$), and local (32.8%, $N = 22$). Most samples were based in China (38.8%, $N = 26$), and Asia in general (52.2%, $N = 35$). General population samples were the most common (40.2%, $N = 27$), followed by healthcare providers (23.8%, $N = 16$), students (16.4%, $N = 11$), and patients (8.9%, $N = 6$). The vast majority of the samples used online methods (91.0%, $N = 61$) and were peer-reviewed (64.1%, $N = 43$). Online Supplementary Table S2 presents the results of the quality assessment. All the included studies scored five or higher in such an assessment. Online Supplementary Tables S3 and S4 present implementation of physical distancing measures and previous prevalence of depression and anxiety, respectively. Differences in prevalences were found across all countries. Depression and anxiety prevalences were 2.4% and 4.2% on average (online Supplementary Table S4).

Figure 2 presents both the global results of the meta-analysis for depression and a subgroup analysis by region of the world ($N = 191\ 519$). We found a global prevalence of 24.0% [95% confidence interval (CI) 21.0–27.1%] of depression; depression was observed among 17.6% (95% CI 15.4–19.8%) in Asia, among 26.0% (95% CI 22.9–29.05%) in Europe, and among 39.1% (95% CI 29.2–49.1%) in other regions of the world. A subgroup analysis (online Supplementary Fig. S3) demonstrated that China had a lower prevalence of depression (16.2%, 95% CI 13.7–18.2%) than in other countries (29.0%, 95% CI 24.8–33.2%). Additional subgroup analyses (online Supplementary Figs S4, S5, and S6) found no significant differences by population type, country income level, or being a local study.

Figure 3 presents the global results for anxiety, with a subgroup analysis by region of the world ($N = 193\ 137$). We found a global

prevalence of anxiety of 21.3% (95% CI 19.0–23.6%). Asia had lower levels of anxiety (17.9%, 95% CI 15.4–20.3%) compared to other regions of the world (28.6%, 95% CI 22.6–34.6%). Europe did not differ from Asia and the other regions of the world. Subgroup analysis at the country-level (online Supplementary Fig. S7) showed that China had a lower prevalence of anxiety (15.5%, 95% CI 13.1–17.9%) compared to all other countries (25.6%, 95% CI 23.1–28.0%). The number of studies in each of the other countries was too restrictive to make country-specific comparisons (i.e. USA was the second country with more studies having just four studies). Further subgroup analysis (online Supplementary Figs S8, S9, and S10) found no significant differences by population type, country income level, or being a local study.

Table 1 shows the results of the meta-regression models for depression. Both in the 2- and 4-week physical distancing models, previous depression, older studies, and other region of the world than Asia/Europe were associated with depression. In addition, patient studies had a higher prevalence of depression in the 2-week physical distancing model. No significant association with physical distancing implementation measures was found in both models.

Table 2 presents the results of the meta-regression models for anxiety. Both in the 2- and 4-week physical distancing models, the closure of public transportation was associated with anxiety. Student studies had lower levels of anxiety in both models. No other significant association between physical distancing measures and depression or anxiety was found. Sensitivity analyses confirmed the results for the 2-week closure of public transportation (online Supplementary Tables S5 and S6).

Discussion

This study aimed to investigate the levels of depression and anxiety during the COVID-19 pandemic and the effect of physical distancing measures on depression and anxiety. We found high global prevalences of both depression and anxiety during the COVID-19 pandemic (24.0% and 21.3%, respectively); however, there was a wide variance in the prevalence of both anxiety and depression reported in the region- and country-level. Asia, and China especially, presented lower levels of both anxiety and depression, compared to the other countries. Closure of public transportation increased the levels of anxiety, independently of the timeframe (2 or 4 weeks post-transportation closure enactment).

Previous research has suggested that the global healthcare sector must increase the support for the prevention and early intervention of depression and anxiety secondary to COVID-19 and physical distancing measures (Galea, Merchant, & Lurie, 2020). Within the subgroup of Asian countries, the estimates of depression prevalence ranged from 15.4% to 19.8%. When comparing to the prevalence of depression in the pre-COVID-19 era, ranging from 1.3% to 3.4% (online Supplementary Table S4), these estimates are demonstrably larger after the initiation of COVID-19. The lower levels of depression found in Asian countries could be culture-dependent. Depression is more stigmatized and under-reported in this region (Yang et al., 2020). In a large cross-national study conducted by the World Mental Health Initiative a decade ago, China and Japan presented the lowest lifetime prevalences of depressive disorders (Bromet et al., 2011). Larger differences were also found for the countries in Europe (1.4–3.9% *v.* 26.0%) and other regions (2.1–4.3% *v.* 29.2%).

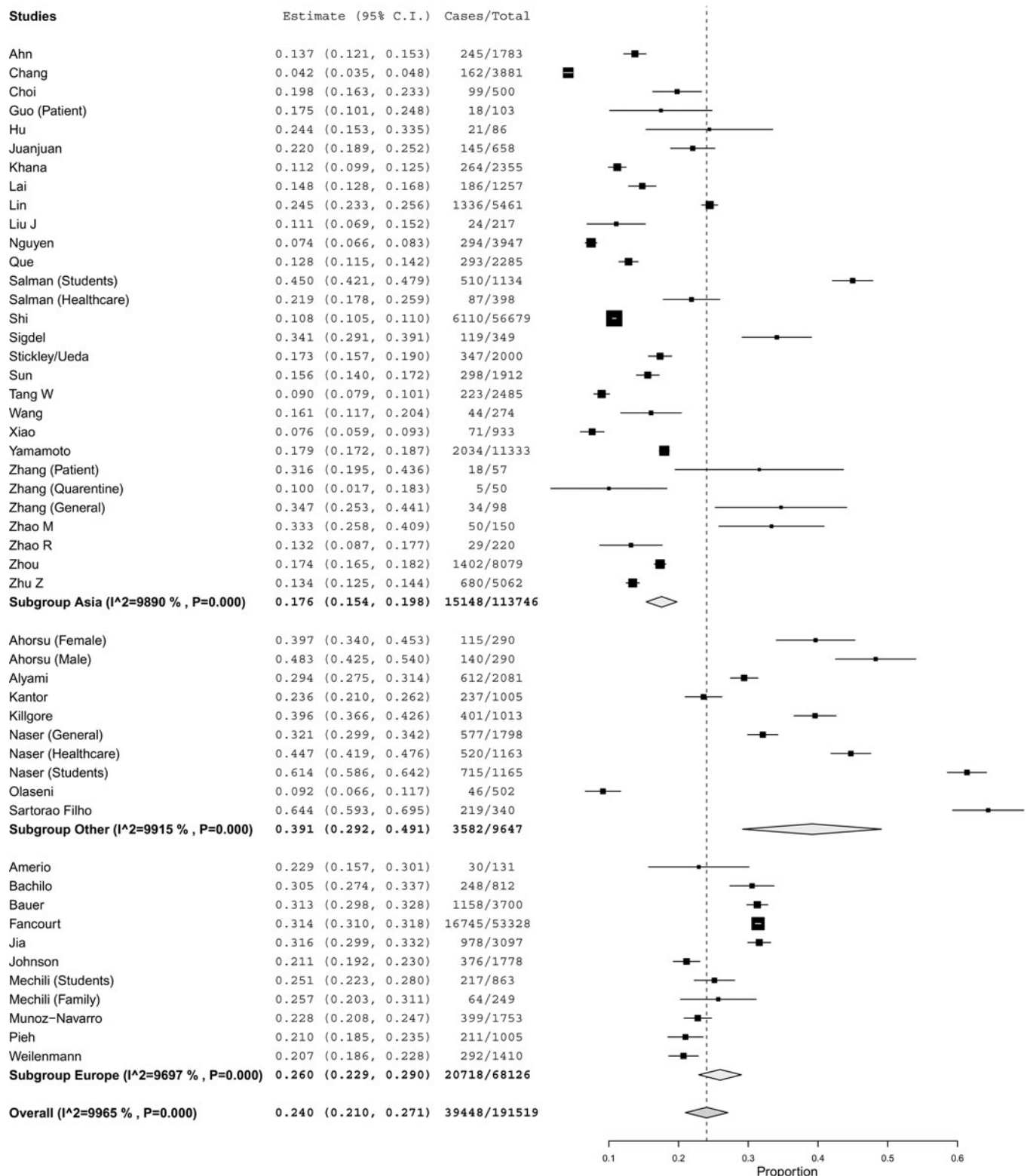


Fig. 2. Global results of the meta-analysis for depression and a subgroup analysis by region of the world.

Similarly, the prevalence of anxiety, as reported in the subgroup of Asian countries, is greater post-COVID-19. Rates of anxiety prior to COVID-19 ranged from 2.1% to 4.1% (online Supplementary Table S4) *v.* 17.9% in the present study. Increases in anxiety can be observed in the countries classified

within the countries outside Asia and Europe (2.8–7.1% *v.* 28.6%). Similar to depression, the lower anxiety levels in Asia could be culture-dependent. The social concerns of the individual could play a role in the expression of the anxiety symptoms (Hofmann, Anu Asnaani, & Hinton, 2010). Lower prevalences

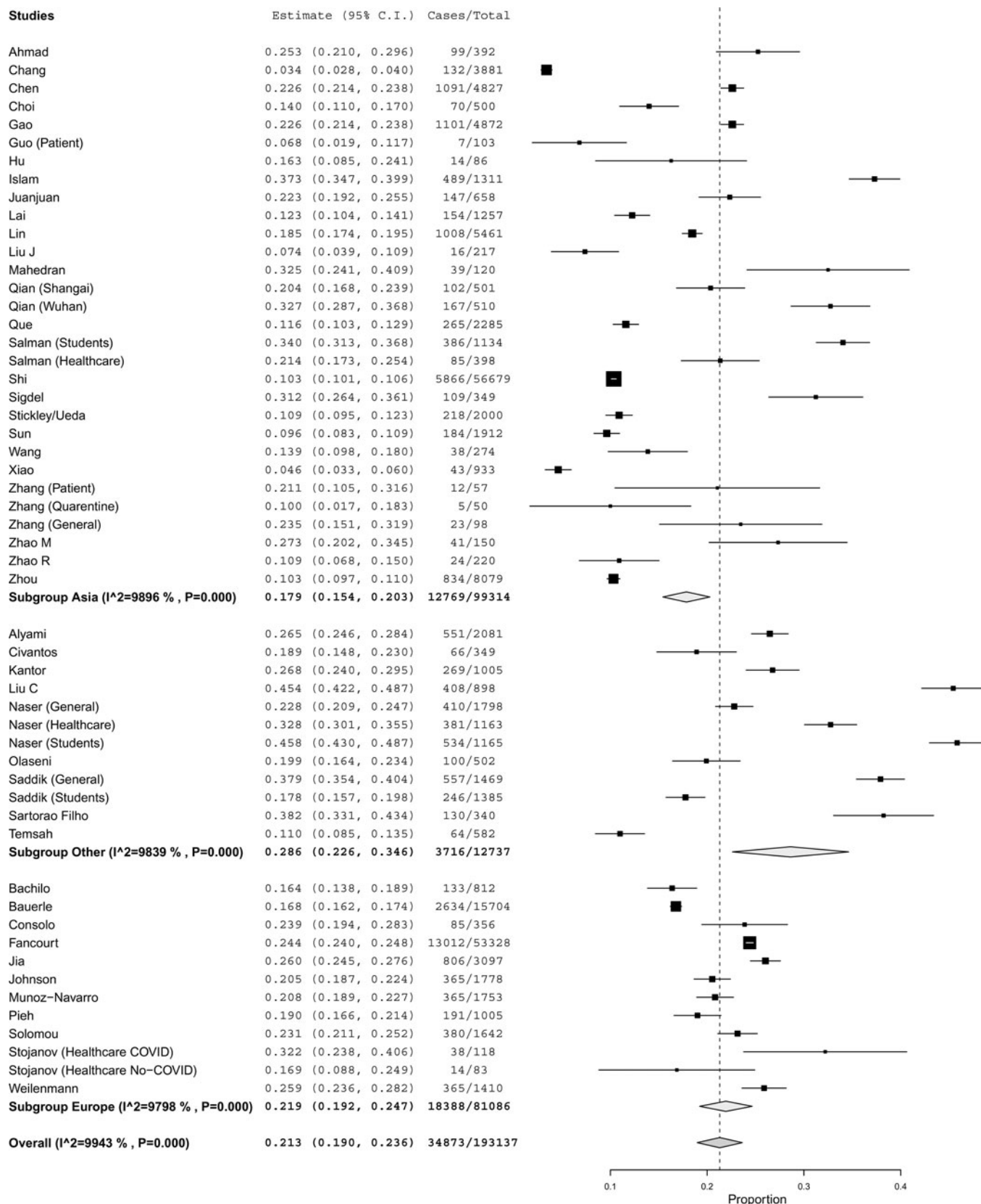


Fig. 3. Global results of the meta-analysis for anxiety and a subgroup analysis by region of the world.

Table 1. Results for the meta-regression models for depression

Covariate	Coefficient	95% CI (min)	95% CI (max)	s.e.	<i>p</i>
2-week model					
School closing (2 weeks)	-0.038	-0.148	0.073	0.057	0.506
Workplace closing (2 weeks)	0.010	-0.096	0.116	0.054	0.852
Cancel public events (2 weeks)	-0.094	-0.257	0.068	0.083	0.253
Restrictions on gatherings (2 weeks)	0.016	-0.026	0.058	0.022	0.465
Close public transport (2 weeks)	0.030	-0.035	0.095	0.033	0.369
Stay-at-home requirements (2 weeks)	0.001	-0.058	0.060	0.030	0.969
Restrictions on internal movement (2 weeks)	0.039	-0.080	0.158	0.061	0.525
International travel controls (2 weeks)	-0.006	-0.032	0.019	0.013	0.626
Female	0.081	-0.072	0.233	0.078	0.302
Previous depression	7.202	1.058	13.346	3.135	0.022
Time	-0.002	-0.004	-0.001	<0.001	0.003
Population type (reference = healthcare)					
General	-0.001	-0.081	0.080	0.041	0.990
Mixed	-0.023	-0.133	0.087	0.056	0.678
Patient	0.098	0.002	0.194	0.049	0.046
Students	0.051	-0.028	0.131	0.041	0.207
Continent (reference = Asia)					
Europe	0.057	-0.022	0.137	0.040	0.155
Other	0.146	0.061	0.232	0.044	<0.001
Regional status (reference = national)					
Regional	0.063	-0.003	0.130	0.034	0.061
4-week model					
School closing (4 weeks)	-0.017	-0.152	0.118	0.069	0.804
Workplace closing (4 weeks)	-0.068	-0.185	0.049	0.060	0.257
Cancel public events (4 weeks)	-0.055	-0.202	0.091	0.075	0.458
Restrictions on gatherings (4 weeks)	0.036	-0.018	0.089	0.027	0.191
Close public transport (4 weeks)	0.028	-0.041	0.097	0.035	0.425
Stay-at-home requirements (4 weeks)	0.004	-0.075	0.083	0.040	0.915
Restrictions on internal movement (4 weeks)	0.050	-0.109	0.210	0.081	0.537
International travel controls (4 weeks)	-0.011	-0.045	0.024	0.018	0.543
Female	0.073	-0.078	0.224	0.077	0.345
Previous depression	7.475	1.369	13.581	3.115	0.016
Time	-0.003	-0.004	-0.001	<0.001	0.002
Population type (reference = healthcare)					
General	-0.020	-0.103	0.064	0.043	0.642
Mixed	-0.038	-0.148	0.072	0.056	0.493
Patient	0.088	-0.009	0.184	0.049	0.076
Students	0.046	-0.034	0.126	0.041	0.262
Continent (reference = Asia)					
Europe	0.042	-0.042	0.126	0.043	0.331
Other	0.147	0.054	0.240	0.048	0.002
Regional status (reference = national)					
Regional	0.059	-0.006	0.124	0.033	0.075

95% CI, 95% confidence interval; s.e., standard error.
 Bold significance $p < 0.05$.

Table 2. Results for the meta-regression models for anxiety

Covariate	Coefficient	95% CI (min)	95% CI (max)	s.e.	p
2-week model					
School closing (2 weeks)	0.002	-0.093	0.098	0.049	0.961
Workplace closing (2 weeks)	-0.001	-0.099	0.097	0.050	0.988
Cancel public events (2 weeks)	0.007	-0.195	0.208	0.103	0.949
Restrictions on gatherings (2 weeks)	0.022	-0.065	0.109	0.044	0.615
Close public transport (2 weeks)	0.071	0.007	0.134	0.032	0.029
Stay-at-home requirements (2 weeks)	-0.029	-0.096	0.038	0.034	0.399
Restrictions on internal movement (2 weeks)	-0.043	-0.173	0.086	0.066	0.512
International travel controls (2 weeks)	0.005	-0.019	0.030	0.013	0.676
Female	0.080	-0.093	0.253	0.088	0.366
Previous anxiety	1.408	-2.472	5.288	1.980	0.477
Time	-0.001	-0.002	0.001	<0.001	0.286
Population type (reference = general)					
Healthcare	-0.040	-0.107	0.026	0.034	0.237
Mixed	-0.039	-0.127	0.049	0.045	0.385
Patient	-0.017	-0.104	0.070	0.044	0.706
Students	-0.068	-0.133	-0.003	0.033	0.041
Continent (reference = Asia)					
Europe	0.003	-0.100	0.106	0.053	0.955
Other	0.017	-0.036	0.071	0.027	0.530
Regional status (reference = national)					
Regional	0.091	-0.017	0.199	0.055	0.100
4-week model					
School closing (4 weeks)	-0.060	-0.162	0.043	0.052	0.256
Workplace closing (4 weeks)	-0.014	-0.119	0.091	0.054	0.792
Cancel public events (4 weeks)	0.041	-0.095	0.177	0.069	0.551
Restrictions on gatherings (4 weeks)	0.032	-0.038	0.101	0.035	0.368
Close public transport (4 weeks)	0.066	0.004	0.128	0.032	0.038
Stay-at-home requirements (4 weeks)	-0.031	-0.104	0.043	0.038	0.414
Restrictions on internal movement (4 weeks)	-0.030	-0.166	0.106	0.069	0.669
International travel controls (4 weeks)	0.017	-0.013	0.048	0.016	0.267
Female	0.025	-0.143	0.193	0.086	0.769
Previous anxiety	1.442	-1.906	4.789	1.708	0.399
Time	-0.001	-0.003	0.000	<0.001	0.060
Population type (reference = general)					
Healthcare	-0.059	-0.122	0.004	0.032	0.067
Mixed	-0.031	-0.108	0.046	0.039	0.426
Patient	-0.005	-0.087	0.078	0.042	0.911
Students	-0.068	-0.130	-0.006	0.032	0.033
Continent (reference = Asia)					
Europe	-0.022	-0.115	0.072	0.048	0.649
Other	0.061	-0.028	0.151	0.046	0.179
Regional status (reference = national)					
Regional	-0.008	-0.060	0.044	0.026	0.766

95% CI, 95% confidence interval; s.e., standard error.

of anxiety are usually found in this continent as compared to data from countries in other continents (Hofmann et al., 2010; Lee et al., 2016). Among the European countries, estimates of anxiety prevalence prior to COVID were between 3.0% and 7.4% (online Supplementary Table S4) in comparison to 19.2% subsequent to the occurrence of COVID-19.

Our finding regarding the effect of public transportation closures on anxiety levels points to the importance of these systems to global populations. Our sensitivity analysis showed significant results in Europe but not in Asia. These findings could be linked to the fact that Europe has a more effective and implemented public transport network on average, making Europeans depending more on public transportation than people in Asian countries (De Gruyter, Currie, & Rose, 2017). However, what the closure of public transportation communicates in terms of the severity of the pandemic to the population may differ between Asia and Europe. We understand that anxiety could emerge as a result of two fear/worry dimensions: not being able to achieve the basic needs and/or insecurity. Depending on the setting (i.e. rural, small to large metropolitan areas), there is a significant number of individuals who do not have an alternative way of transport (i.e. car, motorcycle) and are dependent on public transportation (Pettersson & Khan, 2020). People in many different countries and cultural contexts rely on some method of public transport for getting food, clothing, education, shelter, healthcare, sanitation (Hu, Weng, Zhou, Lin, & Liu, 2019), such as transport within metropolitan areas to places of employment (Johnson, Ercolani, & Mackie, 2017). It is thus reasonable to theorize that anxious anticipatory thinking could emerge in people dependent on public transport. These are core symptoms of many anxiety disorders (Plummer, Manea, Trepel, & McMillan, 2016), which are captured by our anxiety outcome measure (GAD-7). In addition to worry regarding the reliability of public transport, anxiety could grow from an increased risk of assault and harassment resultant from fewer bystanders accessing this method of transportation (Lewis, 2018). Considering that mitigation strategies in the COVID era have involved significantly reducing the volume of passengers, the number of routes, and the means of transport available (Iacus, Natale, Santamaria, Spyrtatos, & Vespe, 2020), closures of these systems can work to generate excessive anxiety and worry (Kim & Gustafson-Pearce, 2016).

Strengths and limitations

Country-level data of physical distancing measures and previous anxiety or depression are an important limitation of the present study. However, we included data from 67 different samples from 26 countries, within five global regions (Asia, Africa, America, Europe, and Middle-East), totaling almost 200 000 individuals in each meta-analysis. In addition, we used just one outcome measure per disorder (PHQ-9 and GAD-7), to avoid outcome measure bias, common in meta-analysis studies. The choice was based on these measures' popularity for assessing depressive and anxiety symptoms during the pandemic. Some studies question the suitability of GAD-7 to diagnose categorical anxiety, despite the good psychometric properties concerning the severity of symptoms (Rutter & Brown, 2017). It may not be a good screener for social anxiety disorder (Beard & Björgvinsson, 2014). Possibly, phobic anxiety disorders may be underrepresented. Unfortunately, we were not able to include age as a covariate in the meta-regression models due to a lack of descriptive data. A portion of the included samples (35.9%,

$N = 24$) were not peer-reviewed. Notably, the inclusion of data from pre-print repositories could be seen as both a strength and limitation, in that the inclusion of the most recent data is of utmost importance. In addition, the association between anxiety and transport closure remained significant in the sensitivity analysis excluding the non-peer-reviewed studies. Results should be interpreted with caution. Finally, this study also did not consider comorbid anxiety-depression, although this comorbidity is prevalent.

Conclusion

The COVID-19 pandemic, and the resulting physical distancing measures to mitigate viral spread, has impacted population mental health worldwide. Despite finding a wide variation in anxiety and depression levels across countries and regions of the world, the high prevalence of mental health disorders is a considerable concern during the COVID era. Thus, mental health outcomes should not be addressed as a delayed consequence of the COVID-19 pandemic, but rather as an ongoing and concurrent epidemic (i.e. a syndemic). We also observed an association between restrictions and closures of public transportation systems and an increase in anxiety levels. These results have important implications for policymakers. There is an urgent need for the healthcare sector to now increase the support for the prevention and early intervention of depression and anxiety.

Supplementary material. The supplementary material for this article can be found at <https://doi.org/10.1017/S0033291721000933>

Acknowledgements. None.

Financial support. The protected time for the contribution of Dr. Castaldelli-Maia towards the research reported in this publication was supported by the National Institute on Drug Abuse (NIDA) of the National Institutes of Health under the NIDA INVEST Drug Abuse Research Fellowship. NIDA had no role in the study design, collection, analysis or interpretation of the data, writing the manuscript, or the decision to submit the paper for publication.

Conflict of interest. None.

References

- Adolph, D., Schneider, S., & Margraf, J. (2016). German anxiety barometer-clinical and everyday-life anxieties in the general population. *Frontiers in Psychology*, 7, 1344. doi: 10.3389/fpsyg.2016.01344
- Ahmad, A., Rahman, I., & Agarwal, M. (2020). Factors influencing mental health during COVID-19 outbreak: An exploratory survey among Indian population. *medRxiv*, Advance online publication. doi: 10.1101/2020.05.03.20081380
- Ahn, M. H., Shin, Y.-W., Hye, K. J., Kim, H. J., Lee, K.-U., & Chung, S. (2020). High work-related stress and anxiety response to COVID-19 among healthcare workers in South Korea: SAVE study. *PsyArXiv*, Advance online publication. doi: 10.31234/osf.io/9nxth
- Ahorsu, D. K., Imani, V., Lin, C. Y., Timpka, T., Brostrom, A., Updegraff, J. A., ... Pakpour, A. H. (2020). Associations between gear of COVID-19, mental health, and preventive behaviours across pregnant women and husbands: An actor-partner interdependence modelling. *International Journal of Mental Health and Addiction*, Epub ahead of print, 1–15. doi: 10.1007/s11469-020-00340-x.
- Al-Qahtani, A. M., Elgzar, W. T., & Ibrahim, H. A. (2020). COVID-19 pandemic: Psycho-social consequences during the social distancing period among Najran City population. *Psychiatry Danubina*, 32(2), 280–286. doi: 10.24869/psyd.2020.280
- Alyami, H. S., Naser, A. Y., Dahmash, E. Z., Alyami, M. H., Al Meanazel, O. T., Al-Meanazel, A. T., & Al Meanazel, O. T. (2020). Depression and anxiety

- during 2019 coronavirus disease pandemic in Saudi Arabia: A cross-sectional study. *medRxiv*, Advance online publication. doi: 10.1101/2020.05.09.20096677
- Amerio, A., Bianchi, D., Santi, F., Costantini, L., Odone, A., Signorelli, C., ... Aguglia, A. (2020). Covid-19 pandemic impact on mental health: A web-based cross-sectional survey on a sample of Italian general practitioners. *Acta Biomedica*, 91(2), 83–88. doi: 10.23750/abm.v91i2.9619
- Bachilo, E. V., Barylnik, Y. B., Shuldyakov, A. A., Efremov, A. A., & Novikov, D. E. (2020). Mental health of medical workers during the COVID-19 pandemic in Russia: Results of a cross-sectional study. *medRxiv*, Advance online publication. doi: 10.1101/2020.07.27.20162610
- Bauer, L. L., Seiffer, B., Deinhart, C., Atrott, B., Sudeck, G., Hautzinger, M., ... Wolf, S. (2020). Associations of exercise and social support with mental health during quarantine and social-distancing measures during the COVID-19 pandemic: A cross-sectional survey in Germany. *medRxiv*, Advance online publication. doi: 10.1101/2020.07.01.20144105
- Bauerle, A., Teufel, M., Musche, V., Weismuller, B., Kohler, H., Hetkamp, M., ... Skoda, E. M. (2020). Increased generalized anxiety, depression and distress during the COVID-19 pandemic: A cross-sectional study in Germany. *Journal of Public Health*, 42(4), 672–678. doi: 10.1093/pubmed/fdaa106
- Beard, C., & Björgvinsson, T. (2014). Beyond generalized anxiety disorder: Psychometric properties of the GAD-7 in a heterogeneous psychiatric sample. *Journal of Anxiety Disorders*, 28(6), 547–552. <https://doi.org/10.1016/j.janxdis.2014.06.002>
- Bromet, E., Andrade, L. H., Hwang, I., Sampson, N. A., Alonso, J., de Girolamo, G., ... Kessler, R. C. (2011). Cross-national epidemiology of DSM-IV major depressive episode. *BMC Medicine*, 9, 90. <https://doi.org/10.1186/1741-7015-9-90>
- Carvalho Aguiar Melo, M., & de Sousa Soares, D. (2020). Impact of social distancing on mental health during the COVID-19 pandemic: An urgent discussion. *The International Journal of Social Psychiatry*, 66(6), 625–626. doi: 10.1177/0020764020927047
- Castaldelli-Maia, J. M. (2020). Social isolation measures effects on depression and anxiety during the SARS-CoV-2 pandemic.
- Chang, J., Yuan, Y., & Wang, D. (2020). Mental health status and its influencing factors among college students during the epidemic of COVID-19. *Nan Fang Yi Ke Da Xue Xue Bao*, 40(2), 171–176. doi: 10.12122/j.issn.1673-4254.2020.02.06
- Chen, S.-H., Dai, J.-M., Hu, Q., Chen, H., Wang, Y., Gao, J.-L., ... Fu, H. (2020). Public anxiety and its influencing factors in the initial outbreak of COVID-19. *Fudan University Journal of Medical Sciences*, 47, 385–391. doi: 10.3969/j.issn.1672-8467.2020.03.012
- Choi, E. P. H., Hui, B. P. H., & Wan, E. Y. F. (2020). Depression and anxiety in Hong Kong during COVID-19. *International Journal of Environmental Research and Public Health*, 17(10). doi: 10.3390/ijerph17103740
- Civantos, A. M., Byrnes, Y., Chang, C., Prasad, A., Chorath, K., Poonia, S. K., ... Rajasekaran, K. (2020). Mental health among otolaryngology resident and attending physicians during the COVID-19 pandemic: National study. *Head & Neck*, 42(7), 1597–1609. doi: 10.1002/hed.26292
- Consolo, U., Bellini, P., Bencivenni, D., Iani, C., & Checchi, V. (2020). Epidemiological aspects and psychological reactions to COVID-19 of dental practitioners in the Northern Italy districts of Modena and Reggio Emilia. *International Journal of Environmental Research and Public Health*, 17(10). doi: 10.3390/ijerph17103459
- De Gruyter, C., Currie, G., & Rose, G. (2017). Sustainability measures of urban public transport in cities: A world review and focus on the Asia/Middle East Region. *Sustainability*, 9(1), 43.
- Fancourt, D., Steptoe, A., & Bu, F. (2020). Trajectories of depression and anxiety during enforced isolation due to COVID-19: Longitudinal analyses of 59318 adults in the UK with and without diagnosed mental illness. *medRxiv*, Advance online publication. doi: 10.1101/2020.06.03.20120923
- Filho, C. I. S., de Las Villas Rodrigues, W. C., de Castro, R. B., Marçal, A. A., Pavelqueires, S., Takano, L., ... Neto, C. I. S. (2020). Impact of Covid-19 pandemic on mental health of medical students: A cross-sectional study using GAD-7 And PHQ-9 questionnaires. *medRxiv*, Advance online publication. doi: 10.1101/2020.06.24.20138925
- Galea, S., Merchant, R. M., & Lurie, N. (2020). The mental health consequences of COVID-19 and physical distancing: The need for prevention and early intervention. *JAMA Internal Medicine*, 180(6), 817–818. doi: 10.1001/jamainternmed.2020.1562
- Gao, J., Zheng, P., Jia, Y., Chen, H., Mao, Y., Chen, S., ... Dai, J. (2020). Mental health problems and social media exposure during COVID-19 outbreak. *PLoS ONE*, 15(4), e0231924. doi: 10.1371/journal.pone.0231924
- Guo, Q., Zheng, Y., Shi, J., Wang, J., Li, G., Li, C., ... Yang, Z. (2020). Immediate psychological distress in quarantined patients with COVID-19 and its association with peripheral inflammation: A mixed-method study. *Brain, Behavior, and Immunity*, 88, 17–27. doi: 10.1016/j.bbi.2020.05.038
- Hale, T., Angrist, N., Cameron-Blake, E., Hallas, L., Kira, B., Majumdar, S., ... Webster, S. (2020). Oxford COVID-19 government response tracker. Retrieved from <https://www.bsg.ox.ac.uk/research/research-projects/coronavirus-government-response-tracker>
- Higgins, J. P., & Thompson, S. G. (2004). Controlling the risk of spurious findings from meta-regression. *Statistics in Medicine*, 23(11), 1663–1682. doi: 10.1002/sim.1752
- Hofmann, S. G., Anu Asnaani, M. A., & Hinton, D. E. (2010). Cultural aspects in social anxiety and social anxiety disorder. *Depression and Anxiety*, 27(12), 1117–1127. <https://doi.org/10.1002/da.20759>
- Hong, J. W., Noh, J. H., & Kim, D. J. (2020). The prevalence of and factors associated with depressive symptoms in the Korean adults: The 2014 and 2016 Korea National Health and Nutrition Examination Survey. *Social Psychiatry and Psychiatric Epidemiology*, Epub ahead of print. doi: 10.1007/s00127-020-01945-2.
- House, J. S., Landis, K. R., & Umberson, D. (1988). Social relationships and health. *Science (New York, N.Y.)*, 241(4865), 540–545.
- Hu, Y., Chen, Y., Zheng, Y., You, C., Tan, J., Hu, L., ... Ding, L. (2020). Factors related to mental health of inpatients with COVID-19 in Wuhan, China. *Brain, Behavior, and Immunity*, 89, 587–593. doi: 10.1016/j.bbi.2020.07.016
- Hu, S., Weng, J., Zhou, W., Lin, P., & Liu, Z. (2019). A data-fusion based method for identifying individual passenger travel dependence on public transportation. Paper presented at the IEEE Intelligent Transportation Systems Conference (ITSC).
- Iacus, S. M., Natale, F., Santamaria, C., Spyrtos, S., & Vespe, M. (2020). Estimating and projecting air passenger traffic during the COVID-19 coronavirus outbreak and its socio-economic impact. *Safety Science*, 129, 104791. doi: 10.1016/j.ssci.2020.104791
- Islam, M. S., Ferdous, M. Z., & Potenza, M. N. (2020). Panic and generalized anxiety during the COVID-19 pandemic among Bangladeshi people: An online pilot survey early in the outbreak. *Journal of Affective Disorders*, 276, 30–37. doi: 10.1016/j.jad.2020.06.049
- Jacobsen, N. C., Lekkas, D., Price, G., Heinz, M. V., Song, M., O'Malley, A. J., & Barr, P. J. (2020). Flattening the mental health curve: COVID-19 stay-at-home orders are associated with alterations in mental health search behavior in the United States. *JMIR Mental Health*, 7(6). doi: 10.2196/19347
- GBD 2017 Diseases and Injuries Collaborators, James, S. L., Abate, D., Abate, K. H., Abay, S. M., Abbafati, C., Abbasi, N., ... Murray, C. J. L. (2018). Global, regional, and national incidence, prevalence, and years lived with disability for 354 diseases and injuries for 195 countries and territories, 1990–2017: A systematic analysis for the Global Burden of Disease Study 2017. *The Lancet*, 392(10159), 1789–1858. doi: 10.1016/s0140-6736(18)32279-7
- Jia, R., Ayling, K., Chalder, T., Massey, A., Broadbent, E., Coupland, C., & Vedhara, K. (2020). Mental health in the UK during the COVID-19 pandemic: Early observations. *medRxiv*, Advance online publication. doi: 10.1101/2020.05.14.20102012
- The Joanna Briggs Institute. (2017). Critical appraisal checklist for analytical cross sectional studies. Retrieved from https://joannabriggs.org/sites/default/files/2019-05/JBI_Critical_Appraisal-Checklist_for_Analytical_Cross_Sequential_Studies2017_0.pdf
- Johnson, S. U., Ebrahimi, O. V., & Hoffart, A. (2020). Level and predictors of PTSD symptoms among health workers and public service providers during the COVID-19 outbreak. *PLoS ONE*, 15(10), e0241032. doi: 10.31234/osf.io/w8c6p
- Johnson, D., Ercolani, M., & Mackie, P. (2017). Econometric analysis of the link between public transport accessibility and employment. *Transport Policy*, 60, 1–9. doi: 10.1016/j.tranpol.2017.08.001

- Juanjuan, L., Santa-Maria, C. A., Hongfang, F., Lingcheng, W., Pengcheng, Z., Yuanbing, X., ... Chuang, C. (2020). Patient-reported outcomes of patients with breast cancer during the COVID-19 outbreak in the epicenter of China: A cross-sectional survey study. *Clinical Breast Cancer*, 20(5), e651–e662. doi: 10.1016/j.clbc.2020.06.003
- Kantor, B. N., & Kantor, J. (2020). Mental health outcomes and associations during the coronavirus disease 2019 pandemic: A cross-sectional survey of the US general population. *medRxiv*, Advance online publication. doi:10.1101/2020.05.26.20114140
- Kessler, R. C., Angermeyer, M., Anthony, J. C., DE Graaf, R., Demyttenaere, K., Gasquet, I., ... Ustün, T. B. (2007). Lifetime prevalence and age-of-onset distributions of mental disorders in the World Health Organization's World Mental Health Survey Initiative. *World Psychiatry*, 6(3), 168–176.
- Khanna, R. C., Honavar, S. G., Metla, A. L., Bhattacharya, A., & Maulik, P. K. (2020). Psychological impact of COVID-19 on ophthalmologists-in-training and practising ophthalmologists in India. *Indian Journal of Ophthalmology*, 68(6), 994–998. doi: 10.4103/ijoo.IJO_1458_20
- Killgore, W. D. S., Cloonan, S. A., Taylor, E. C., & Dailey, N. S. (2020). Loneliness: A signature mental health concern in the era of COVID-19. *Psychiatry Research*, 290, 113117. doi: 10.1016/j.psychres.2020.113117
- Kim, J., & Gustafson-Pearce, O. (2016). Passengers' anxiety about using the London Underground. Paper presented at the 2016 IEEE International Conference on Intelligent Rail Transportation (ICIRT), Birmingham, UK.
- Kroenke, K., Spitzer, R. L., & Williams, J. B. W. (2001). The PHQ-9: Validity of a brief depression severity measure. *Journal of General Internal Medicine*, 16(9), 606–613. doi: 10.1046/j.1525-1497.2001.016009606.x
- Lai, J., Ma, S., Wang, Y., Cai, Z., Hu, J., Wei, N., ... Hu, S. (2020). Factors associated with mental health outcomes among health care workers exposed to Coronavirus disease 2019. *JAMA Network Open*, 3(3), e203976. doi: 10.1001/jamanetworkopen.2020.3976
- Lee, S. P., Sagayadevan, V., Abidin, E., Vaingankar, J. A., Chong, S. A., & Subramaniam, M. (2016). Prevalence, correlates, comorbidity and severity of generalized anxiety disorder in Singapore. *Asian Journal of Psychiatry*, 23, 32–38. <https://doi.org/10.1016/j.ajp.2015.06.012>
- Lewis, S. (2018). *Sexual harassment on the London Underground: Mobilities, temporalities and knowledges of gendered violence in public transport*. Doctor of Philosophy. Loughborough University.
- Lin, L. Y., Wang, J., Ou-Yang, X. Y., Miao, Q., Chen, R., Liang, F. X., ... Wang, T. (2020). The immediate impact of the 2019 novel coronavirus (COVID-19) outbreak on subjective sleep status. *Sleep Medicine*, 77, 348–354. doi:10.1016/j.sleep.2020.05.018.
- Liu, C. H., Zhang, E., Wong, G. T. F., Hyun, S., & Hahm, H. C. (2020a). Factors associated with depression, anxiety, and PTSD symptomatology during the COVID-19 pandemic: Clinical implications for U.S. young adult mental health. *Psychiatry Research*, 290, 113172. doi: 10.1016/j.psychres.2020.113172
- Liu, J., Zhu, Q., Fan, W., Makamure, J., Zheng, C., & Wang, J. (2020b). Online mental health survey in a medical college in China during the COVID-19 outbreak. *Frontiers in Psychiatry*, 11, 459. doi: 10.3389/fpsy.2020.00459
- Mahendran, K., Patel, S., & Sproat, C. (2020). Psychosocial effects of the COVID-19 pandemic on staff in a dental teaching hospital. *British Dental Journal*, 229(2), 127–132. doi: 10.1038/s41415-020-1792-3
- Marziali, M. E., Card, K. G., McLinden, T., Wang, L., Trigg, J., & Hogg, R. S. (2020). Physical distancing in COVID-19 may exacerbate experiences of social isolation among people living with HIV. *AIDS & Behavior*, 24(8), 2250–2252. doi: 10.1007/s10461-020-02872-8
- Mechili, E. A., Saliq, A., Kamberi, F., Girvalaki, C., Peto, E., Patelarou, A. E., ... Patelarou, E. (2020). Is the mental health of young students and their family members affected during the quarantine period? Evidence from the COVID-19 pandemic in Albania. *Journal of Psychiatric and Mental Health Nursing*, Epub ahead of print. doi: 10.1111/jpm.12672.
- Moher, D., Liberati, A., Tetzlaff, J., Altman, D. G., & Group, P. (2009). Preferred reporting items for systematic reviews and meta-analyses: The PRISMA statement. *PLoS Medicine*, 6(7), e1000097. doi: 10.1371/journal.pmed.1000097
- Muñoz-Navarro, R., Vindel, A. C., Schmitz, F., Cabello, R., & Fernández-Berocal, P. (2020). Emotional distress and associated sociodemographic risk factors during the COVID-19 outbreak in Spain. *medRxiv*, Advance online publication. doi: 10.1101/2020.05.30.20117457
- Naser, A. Y., Dahmash, E. Z., Al-Rousan, R., Alwafi, H., Alrawashdeh, H. M., Ghoul, I., ... Dagash, A. (2020). Mental health status of the general population, healthcare professionals, and university students during 2019 coronavirus disease outbreak in Jordan: A cross-sectional study. *medRxiv*, Advance online publication. doi:10.1101/2020.04.09.20056374
- Nguyen, H. C., Nguyen, M. H., Do, B. N., Tran, C. Q., Nguyen, T. T. P., Pham, K. M., ... Duong, T. V. (2020). People with suspected COVID-19 symptoms were more likely depressed and had lower health-related quality of life: The potential benefit of health literacy. *Journal of Clinical Medicine*, 9(4), 965. doi: 10.3390/jcm9040965.
- Olaseni, A. O., Akinsola, O. S., Agberotimi, S. F., & Oguntayo, R. (2020). Psychological distress experiences of Nigerians amid COVID-19 pandemic. *medRxiv*, Advance online publication. doi: <https://ssrn.com/abstract=3596106> or <http://dx.doi.org/10.2139/ssrn.3596106>
- Pappa, S., Ntella, V., Giannakas, T., Giannakoulis, V. G., Papoutsis, E., & Katsounou, P. (2020). Prevalence of depression, anxiety, and insomnia among healthcare workers during the COVID-19 pandemic: A systematic review and meta-analysis. *Brain, Behavior, and Immunity*, 88, 901–907. doi: 10.1016/j.bbi.2020.05.026
- Pettersson, F., & Khan, J. (2020). Smart public transport in rural areas: Prospects, challenges and policy needs. In A. Paulsson, & C. H. Sørensen (Eds.), *Shaping smart mobility futures: Governance and policy instruments in times of sustainability transitions* (pp. 187–201). Bingley, UK: Emerald Publishing Limited.
- Pieh, C., Budimir, S., & Probst, T. (2020). The effect of age, gender, income, work, and physical activity on mental health during coronavirus disease (COVID-19) lockdown in Austria. *Journal of Psychosomatic Research*, 136, 110186. doi: 10.1016/j.jpsychores.2020.110186
- Plummer, F., Manea, L., Trepel, D., & McMillan, D. (2016). Screening for anxiety disorders with the GAD-7 and GAD-2: A systematic review and diagnostic metaanalysis. *General Hospital Psychiatry*, 39, 24–31. doi: 10.1016/j.genhosppsych.2015.11.005
- Qian, M., Wu, Q., Wu, P., Hou, Z., Liang, Y., Cowling, B. J., & Yu, H. (2020). Psychological responses, behavioral changes and public perceptions during the early phase of the COVID-19 outbreak in China: A population based cross-sectional survey. *medRxiv*, Advance online publication. doi: 10.1101/2020.02.18.20024448
- Que, J., Shi, L., Deng, J., Liu, J., Zhang, L., Wu, S., ... Lu, L. (2020). Psychological impact of the COVID-19 pandemic on healthcare workers: A cross-sectional study in China. *General Psychiatry*, 33(3), e100259. doi: 10.1136/gpsych-2020-100259
- Rutter, L. A., & Brown, T. A. (2017). Psychometric properties of the Generalized Anxiety Disorder Scale-7 (GAD-7) in outpatients with anxiety and mood disorders. *Journal of Psychopathology and Behavioral Assessment*, 39(1), 140–146.
- Saddik, B., Hussein, A., Albanna, A., Elbarazi, I., Al-Shujairi, A., Sharif-Askari, F. S., ... Halwani, R. (2020a). Assessing the influence of parental anxiety on childhood anxiety during the COVID-19 pandemic in the United Arab Emirates. *medRxiv*, Advance online publication. doi: 10.1101/2020.06.11.20128371
- Saddik, B., Hussein, A., Sharif-Askari, F. S., Kheder, W., Tamsah, M.-H., Koutaich, R. A., ... Halwani, R. (2020b). Increased levels of anxiety among medical and non-medical university students during the COVID-19 pandemic in the United Arab Emirates. *medRxiv*, Advance online publication. doi: 10.1101/2020.05.10.20096933
- Salman, M., Asif, N., Mustafa, Z. U., Khan, T. M., Shehzadi, N., Hussain, K., ... Khan, T. M. (2020a). Psychological impact of COVID-19 on Pakistani university students and how they are coping. *medRxiv*, Advance online publication. doi:10.1101/2020.05.21.20108647
- Salman, M., Raza, M. H., Mustafa, Z. U., Khan, T. M., Asif, N., Tahir, H., ... Hussain, K. (2020b). The psychological effects of COVID-19 on frontline healthcare workers and how they are coping: A web-based, cross-sectional study from Pakistan. *medRxiv*, Advance online publication. doi: 10.1101/2020.06.03.20119867
- Shi, L., Lu, Z. A., Que, J. Y., Huang, X. L., Liu, L., Ran, M. S., ... Lu, L. (2020). Prevalence of and risk factors associated with mental health symptoms among the general population in China during the Coronavirus disease 2019 pandemic. *JAMA Network Open*, 3(7), e2014053. doi: 10.1001/jamanetworkopen.2020.14053

- Sigdel, A., Bista, A., Bhattarai, N., Pun, B. C., Giri, G., Marqusee, H., & Thapa, S. (2020). Depression, anxiety and depression-anxiety comorbidity amid COVID-19 pandemic: An 4 online survey conducted during lockdown in Nepal. *medRxiv*, Advance online publication. doi: 10.1101/2020.04.30.20086926
- Solomou, I., & Constantinidou, F. (2020). Prevalence and predictors of anxiety and depression symptoms during the COVID-19 pandemic and compliance with precautionary measures: Age and sex matter. *International Journal of Environmental Research and Public Health*, 17(14), Advance online publication. doi: 10.3390/ijerph17144924
- Spitzer, R. L., Kroenke, K., Williams, J. B. W., & Löwe, B. (2006). A brief measure for assessing generalized anxiety disorder: The GAD-7. *Archives of Internal Medicine*, 166(10), 1092–1097. doi: 10.1001/archinte.166.10.1092
- Stickley, A., Matsubayashi, T., Sueki, H., & Ueda, M. (2020). COVID-19 preventive behaviors among people with anxiety and depression: Findings from Japan. *medRxiv*, Advance online publication. doi: 10.1101/2020.06.19.20135293
- Stojanov, J., Malobabic, M., Stanojevic, G., Stevic, M., Milosevic, V., & Stojanov, A. (2020). Quality of sleep and health-related quality of life among health care professionals treating patients with coronavirus disease-19. *International Journal of Social Psychiatry*, 1–7. Epub ahead of print, doi: 10.1177/0020764020942800
- Stroup, D. F., Berlin, J. A., Morton, S. C., Olkin, I., Williamson, G. D., Rennie, D., ... Thacker, S. B. (2000). Meta-analysis of observational studies in epidemiology: A proposal for reporting. *JAMA*, 283(15), 2008–2012. doi: 10.1001/jama.283.15.2008
- Sun, S., Goldberg, S. B., Lin, D., Qiao, S., & Operario, D. (2020). Psychiatric symptoms, risk, and protective factors among university students in quarantine during the COVID-19 pandemic in China. *medRxiv*, Advance online publication. doi: 10.1101/2020.07.03.20144931
- Tang, W., Hu, T., Hu, B., Jin, C., Wang, G., Xie, C., ... Xu, J. (2020). Prevalence and correlates of PTSD and depressive symptoms one month after the outbreak of the COVID-19 epidemic in a sample of home-quarantined Chinese university students. *Journal of Affective Disorders*, 274, 1–7. doi: 10.1016/j.jad.2020.05.009
- Temseh, M. H., Al-Sohime, F., Alamro, N., Al-Eyadhy, A., Al-Hasan, K., Jamal, A., ... Somily, A. M. (2020). The psychological impact of COVID-19 pandemic on health care workers in a MERS-CoV endemic country. *Journal of Infection and Public Health*, 13(6), 877–882. doi: 10.1016/j.jiph.2020.05.021
- Torales, J., O'Higgins, M., Castaldelli-Maia, J. M., & Ventriglio, A. (2020). The outbreak of COVID-19 coronavirus and its impact on global mental health. *International Journal of Social Psychiatry*, 66(4), 317–320. doi: 10.1177/0020764020915212
- Twenge, J. M., & Joiner, T. E. (2020). U.S. Census Bureau-assessed prevalence of anxiety and depressive symptoms in 2019 and during the 2020 COVID-19 pandemic. *Depression and Anxiety*, 37(10), 954–956. doi: 10.1002/da.23077.
- Ueda, M., Stickley, A., Sueki, H., & Matsubayashi, T. (2020). Mental health status of the general population during the COVID-19 pandemic: A cross-sectional national survey in Japan. *medRxiv*, Advance online publication. doi:10.1101/2020.04.28.20082453
- Velavan, T. P., & Meyer, C. G. (2020). The COVID-19 epidemic. *Tropical Medicine and International Health*, 25(3), 278–280. doi: 10.1111/tmi.13383
- Viechtbauer, W. (2010). Conducting meta-analyses in R with the metafor package. *Journal of Statistical Software*, 36(3), 1–48.
- Wallace, B. C., Dahabreh, I. J., Trikalinos, T. A., Lau, J., Trow, P., & Schmid, C. H. (2012). Closing the gap between methodologists and end-users: R as a computational back-end. *Journal of Statistical Software*, 49(5), 1–15.
- Wang, L. Q., Zhang, M., Liu, G. M., Nan, S. Y., Li, T., Xu, L., ... Liu, F. (2020). Psychological impact of Coronavirus Disease 2019 (COVID-19) epidemic on medical staff in different posts in China: A multicenter study. *Journal of Psychiatric Research*, 129, 198–205. doi: 10.1016/j.jpsyres.2020.07.008
- Weilenmann, S., Ernst, J., Petry, H., Pfaltz, M. C., Szapinar, O., Gehrke, S., ... Spiller, T. R. (2020). Health care workers' mental health during the first weeks of the SARS-CoV-2 pandemic in Switzerland – a cross-sectional study. *medRxiv*, Advance online publication. doi: 10.1101/2020.05.04.20088625
- Wiersinga, W. J., Rhodes, A., Cheng, A. C., Peacock, S. J., & Prescott, H. C. (2020). Pathophysiology, transmission, diagnosis, and treatment of Coronavirus Disease 2019 (COVID-19): A review. *JAMA*, 324(8), 782–793. doi: 10.1001/jama.2020.12839
- Williams, S. N., Armitage, C. J., Tampe, T., & Dienes, K. (2020). Public perceptions and experiences of social distancing and social isolation during the COVID-19 pandemic: A UK-based focus group study. *BMJ Open*, 10(7), e039334. doi: 10.1136/bmjopen-2020-039334
- Xiao, H., Shu, W., Li, M., Li, Z., Tao, F., Wu, X., ... Hu, Y. (2020). Social distancing among medical students during the 2019 Coronavirus Disease pandemic in China: Disease awareness, anxiety disorder, depression, and behavioral activities. *International Journal of Environmental Research and Public Health*, 17(14), 1–13. doi: 10.3390/ijerph17145047
- Yamamoto, T., Uchiyama, C., Suzuki, N., Yoshimoto, J., & Murillo-Rodriguez, E. (2020). The psychological impact of 'mild lockdown' in Japan during the COVID-19 pandemic: A nationwide survey under a declared state of emergency. *medRxiv*, Advance online publication. doi:<https://doi.org/10.1101/2020.07.17.20156125>
- Yang, F., Yang, B. X., Stone, T. E., Wang, X. Q., Zhou, Y., Zhang, J., & Jiao, S. F. (2020). Stigma towards depression in a community-based sample in China. *Comprehensive Psychiatry*, 97, 152152. <https://doi.org/10.1016/j.comppsy.2019.152152>
- Zhang, J., Lu, H., Zeng, H., Zhang, S., Du, Q., Jiang, T., & Du, B. (2020). The differential psychological distress of populations affected by the COVID-19 pandemic. *Brain, Behavior, and Immunity*, 87, 49–50. doi: 10.1016/j.bbi.2020.04.031
- Zhao, M., Peng, D., Liu, Q., & Ouyang, Y. (2020a). Investigation on mental status of patients with hematological malignancies during the COVID-19 outbreak and related influencing factors. *Nursing of Integrated Traditional Chinese and Western Medicine*, 6(3), 38–41. doi: 10.11997/nitcwm.202003008
- Zhao, R., Zhou, Q., Wang, X. W., Liu, C. H., Wang, M., Yang, Q., ... Xu, H. (2020b). COVID-19 outbreak and management approach for families with children on long-term kidney replacement therapy. *Clinical Journal of the American Society of Nephrology*, 15(9), 1259–1266. doi: 10.2215/CJN.03630320
- Zhou, S. J., Zhang, L. G., Wang, L. L., Guo, Z. C., Wang, J. Q., Chen, J. C., ... Chen, J. X. (2020). Prevalence and socio-demographic correlates of psychological health problems in Chinese adolescents during the outbreak of COVID-19. *European Child & Adolescent Psychiatry*, 29(6), 749–758. doi: 10.1007/s00787-020-01541-4
- Zhu, Z., Xu, S., Wang, H., Liu, Z., Wu, J., Li, G., ... Wang, W. (2020). COVID-19 in Wuhan: Sociodemographic characteristics and hospital support measures associated with the immediate psychological impact on healthcare workers. *EClinicalMedicine*, 24, 100443. doi: 10.1016/j.eclinm.2020.100443