

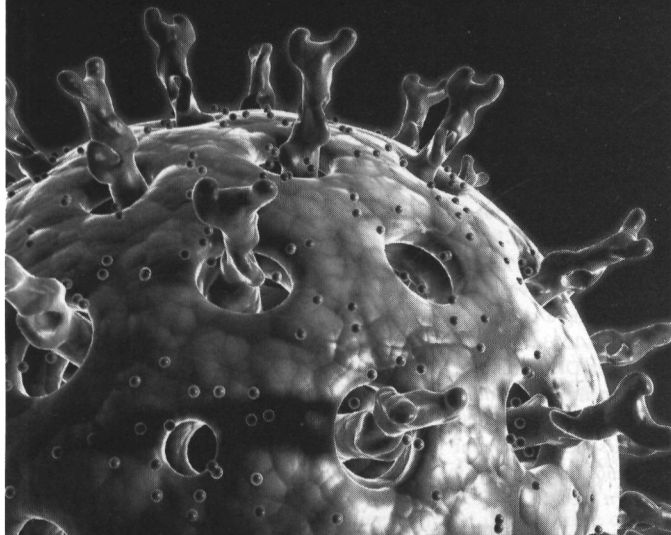
# INFECTIOUS DISEASE

Edited by **SCIENTIFIC AMERICAN**

With sections devoted to viral infections, infectious disease, the immune system, and global management and treatment issues, *Infectious Disease* collects thirty of the most exciting, innovative, and significant articles on communicable illness published in the pages of *Scientific American* magazine since 1993.

**Contributors:** Bruce R. Bacon, Jacques Banchereau, Chris L. Barrett, Patrik M. Bavoil, Martin J. Blaser, Christopher N. C. Boddy, R. John Collier, Toni Darville, Daniel M. Davis, Adrian M. Di Bisceglie, Claire Panosian Dunavan, Paul R. Epstein, Stephen G. Eubank, Carol Ezzell, Thomas G. Fanning, Zoltan Fehervari, W. Wayt Gibbs, Roger I. Glass, William A. Haseltine, Bernard Le Guenno, Stuart B. Levy, K. C. Nicolaou, Abner Louis Notkins, David M. Ojcius, Luke A. J. O'Neill, William E. Paul, Stanley B. Prusiner, Ann H. Reid, Philip E. Ross, Shimon Sakaguchi, James P. Smith, Christine Soares, Gary Stix, Jeffery K. Taubenberger, Luis P. Villarreal, Rodney E. Willoughby, Jr., John A. T. Young, Moncef Zouali

**Paper \$22.50**



The University of Chicago Press [www.press.uchicago.edu](http://www.press.uchicago.edu)



JOURNALS FROM  
**CHICAGO**

## EDUCATION

American Journal of Education  
Comparative Education Review  
The Elementary School Journal  
Schools: Studies in Education

## HUMANITIES

American Art  
The American Historical Review  
Classical Philology  
Critical Inquiry  
Ethics  
History of Religions  
International Journal of American Linguistics  
Isis  
Journal of Near Eastern Studies  
The Journal of Religion  
Modern Philology  
Osiris  
Renaissance Quarterly  
Signs: Journal of Women in Culture and Society  
Winterthur Portfolio: A Journal of American Material Culture

## LIFE AND PHYSICAL SCIENCES

The American Naturalist  
International Journal of Plant Sciences  
The Journal of Geology  
Physiological and Biochemical Zoology  
Publications of the Astronomical Society of the Pacific  
The Quarterly Review of Biology

## MEDICAL SCIENCES

Clinical Infectious Diseases  
Infection Control and Hospital Epidemiology  
The Journal of Infectious Diseases

## SOCIAL SCIENCES

The American Historical Review  
American Journal of Sociology  
Crime and Justice  
Current Anthropology  
Economic Development and Cultural Change  
Isis  
Journal of British Studies  
Journal of Consumer Research  
Journal of Human Capital  
Journal of Labor Economics  
The Journal of Law & Economics  
The Journal of Legal Studies  
The Journal of Modern History  
Journal of Political Economy  
The Library Quarterly  
NBER Annuals:  
Innovation Policy and the Economy  
NBER International Seminar on Macroeconomics  
NBER Macroeconomics Annual  
Tax Policy and the Economy  
Osiris  
Philosophy of Science  
Signs: Journal of Women in Culture and Society  
Social Service Review  
Supreme Court Economic Review  
The Supreme Court Review



PUBLISHED BY  
THE UNIVERSITY  
OF CHICAGO PRESS  
JOURNALS DIVISION

[WWW.JOURNALS.UCHICAGO.EDU](http://WWW.JOURNALS.UCHICAGO.EDU)

Infection prevention and control in healthcare settings is a critical public health problem rapidly gaining interest.

**Are you current with the latest trends and evidence?**

**Join SHEA Today!**

Stay on top of emerging science and evidence-based strategies to prevent and control infections and to improve quality-of-care in your healthcare facility.

SHEA supports members' efforts to improve patient care and healthcare worker safety through:

- Research
- Education & Training
- Policy Development
- Evidence-based Practical Guidelines
- Mentorship and Professional Development

**Application Details**

[www.shea-online.org](http://www.shea-online.org)  
[info@shea-online.org](mailto:info@shea-online.org)  
(703) 684-1006

Annual membership offers:

- Subscription and online access to *Infection Control and Hospital Epidemiology (ICHE)*, the official journal of SHEA
- Epidemiology News and e-newsletter
- Discounted registration on SHEA educational programming
- Online member network and job board



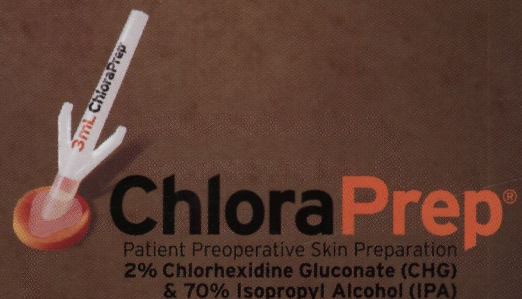
*The Society for Healthcare Epidemiology of America*

# FIND THE MICROBE THAT COULD COST THIS PATIENT HER LIFE.

80% of the bacteria that cause infections reside in the first five layers of the patient's own skin! That's why there's ChloraPrep®. ChloraPrep combines the CDC-recommended formulation of 2% CHG with innovative, "hands-off" applicators to provide a more effective system for helping reduce infections associated with skin bacteria. ChloraPrep is fast-acting on a broad spectrum of bacteria, including MRSA, and inhibits bacterial growth for at least 48 hours.<sup>2,3</sup> **Help stop infection from the start with ChloraPrep.**

- ▶ **PERSISTENT** antimicrobial activity inhibits the growth of bacteria for at least 48 hours<sup>2,3</sup>
- ▶ **PROVEN** in 33 published studies as best practice for helping reduce the risk of infection
- ▶ **RECOMMENDED** use of 2% CHG formulation in at least 10 evidence-based guidelines, including the CDC, SCAI and IHI

**REFERENCES** 1. Brown E, Wenzel RP, Hendley JO. Exploration of the microbial anatomy of normal human skin by using plasmid profiles of coagulase-negative staphylococci: search for the reservoir of resident skin flora. *J Infect Dis.* 1989;160(4):644-650. 2. Garcia R, Mulberry G, Brady A, Hibbard JS. Comparison of ChloraPrep and Betadine as preoperative skin preparation antiseptics. Poster presented at 40th Annual Meeting of the Infectious Diseases Society of America; October 25, 2002; Chicago, Ill. 3. Data on file. Cardinal Health, Inc.



chloraprep.com | 800-523-0502

©2008 Cardinal Health, Inc. All rights reserved. ChloraPrep is a registered trademark of Cardinal Health, Inc. or one of its subsidiaries. ADV-SBC1008