




Post-migration HIV acquisition: A systematic review and meta-analysis

Simran Mann¹ , Zeenathnisa Mougammadou², Jan Wohlfahrt³ and Rahma Elmahdi^{4,5}

Review

Cite this article: Mann S, Mougammadou Z, Wohlfahrt J and Elmahdi R (2024). Post-migration HIV acquisition: A systematic review and meta-analysis. *Epidemiology and Infection*, **152**, e49, 1–11
<https://doi.org/10.1017/S0950268824000372>

Received: 30 November 2023

Revised: 20 January 2024

Accepted: 19 February 2024

Keywords:

epidemiology; HIV; migrant; public health; migration

Corresponding author:

Rahma Elmahdi;

Email: rahmae@dcm.aau.dk

¹School of Public Health, Imperial College London, London, UK; ²Preventive Medicine, National University Hospital, Singapore; ³The Danish Cancer Society, Copenhagen, Denmark; ⁴Department of Clinical Medicine, Aalborg University, Copenhagen, Denmark and ⁵Department of Gastroenterology and Hepatology, Aalborg University Hospital, Aalborg, Denmark

Abstract

Migrants in Europe face a disproportionate burden of HIV infection; however, it remains unclear if this can be prevented through public health interventions in host countries. We undertake a systematic review and meta-analysis to estimate post-migration HIV acquisition (PMHA) as a proportion of all HIV cases in European migrants. MEDLINE, EMBASE, Global Health, HMIC, and Cochrane Library were searched with terms capturing 'HIV', 'migration', and 'Europe'. Data relating to the proportion of HIV acquired following migration were extracted and random-effects model (REM) meta-analysis was undertaken to calculate a pooled estimate for the proportion of PMHA in European countries. Subgroup meta-analysis was undertaken for PMHA by migrant demographic characteristics and host country. Fifteen articles were included for systematic review following retrieval and screening of 2,320 articles. A total of 47,182 migrants in 11 European countries were included in REM meta-analysis, showing an overall PMHA proportion of 0.30 (95% CI: 0.23–0.38). Subgroup analysis showed no significant difference in PMHA between host country and migrant demographic characteristics. This work illustrates that migrants continue to be at high risk of HIV acquisition in Europe. This indicates the need for targeted screening and HIV prevention interventions, ensuring resources are appropriately directed to combat the spread of HIV.

Background

Migrant populations in Europe bear a disproportionate burden of HIV, accounting for more than one-third of all newly diagnosed HIV cases in the EU/EEA [1]. Despite being a significant risk group for HIV, migrants are often diagnosed at a later stage than non-migrants and have lower uptake of prevention or treatment interventions [2,3]. Furthermore, migrants have been shown to have poorer outcomes at each stage of the HIV continuum of care, including later diagnoses, lower rates of adherence to treatment, and lower rates of viral suppression when compared with non-migrant populations [4,5].

When combating the burden of HIV in migrant populations, the focus is placed on screening migrants on entry to ensure the linkage of migrants living with HIV into care in their host country [1–3]. The focus on screening as prevention stems from the assumption that HIV is most often acquired in the country of origin, before or during migration. However, current literature suggests that a large proportion of HIV cases in migrant populations are acquired post-migration (i.e., in the host country) [4–6]. Therefore, efforts to identify HIV only in recent migrants could be rendered insufficient to prevent the spread of HIV as they may not protect vulnerable patients within migrant groups from HIV acquisition post-migration.

An accurate estimate of PMHA is key to addressing disparities in migrant access to HIV prevention and treatment. Such estimates play a vital role in identifying opportunities to effectively eliminate these gaps by identifying new clusters of HIV infections for targeted screening and treatment programmes or it could identify subgroups with very high HIV acquisition risks. This could inform national and local prevention measures, including education of health risks and provision of pre-exposure prophylaxis to high-risk groups within migrant populations. Such an insight will also guide clinicians' views and reframe the approach to preventative measures for high-risk groups within migrant populations.

Of note, the aMASE study and the PARCOURS study attempted to quantify post-migration HIV acquisition (PMHA) in migrant populations [5, 6]. However, PARCOURS, which classified 35% of HIV cases as PMHA, was based solely in France. aMASE estimated PMHA to be 63%, but used a 'convenience sample' across Europe, limiting the study's external validity. Although these studies provide good insight into PMHA, they do not provide sufficient evidence from different migrant groups in different countries to estimate the average proportion of PMHA across Europe.

© The Author(s), 2024. Published by Cambridge University Press. This is an Open Access article, distributed under the terms of the Creative Commons Attribution licence (<http://creativecommons.org/licenses/by/4.0>), which permits unrestricted re-use, distribution and reproduction, provided the original article is properly cited.

The aim of this study therefore was to quantify PMHA, as a proportion of all HIV cases in migrants in Europe through systematic review and meta-analysis of the published data. The primary outcome of this study was the proportion of PMHA in migrants in Europe; secondary outcomes were proportions of PMHA in migrant groups by reporting country, region of origin, gender, and sexuality. This study also intended to estimate PMHA by reporting country and by migrant demographic subgroup, including region of origin, gender, and sexuality.

Methods

Migrants were classified in the inclusion process according to the UN definition: 'a person who moves to a new country for a period of ≥ 1 year so the country of destination effectively becomes his/her new country of usual residence'. PMHA was defined as the acquisition of HIV infection and was determined from either i) 'life events' in the patient history of an HIV-positive migrant (i.e., a previous negative test taken post-migration indicates that the patient was HIV-negative on entry into the host country) or ii) matching patients' CD4 count, or other reliable biomarker level, at diagnosis with a CD4 decline model in untreated HIV-infected patients. Matching with such a model allowed for the estimation of the infection date. If the date of infection occurred after migration, it was classified as PMHA.

Search strategy

In August 2022, MEDLINE, EMBASE, Global Health, Health management information consortium (HMIC), and Cochrane Library were searched for studies fulfilling the inclusion criteria. Reference lists from included articles were subsequently screened for more articles for potential inclusion. Only published, peer-reviewed articles were included. Grey literature or conference abstracts were excluded to ensure the inclusion of only high-quality, peer-reviewed studies. Search terms and subject headings included migrant*, HIV, and Europ* (Supplementary materials Table 1: Search Terms).

All study types providing a quantitative estimate, including surveillance reports and mathematical modelling studies, were included. To account for the impact of antiretroviral therapy on HIV transmission pathways, the search was limited to articles published since 1996. Papers were excluded if they did not provide an estimate of average PMHA in first-generation migrant populations in a European country (Supplementary materials Table 2: Screening Criteria).

Screening

Titles and abstracts were screened independently by authors SM and ZM, and discrepancies were resolved by author RE. PRISMA guidelines were followed throughout this review (Figure 1). Following this, a full paper screen was performed. A quality assessment using the Newcastle–Ottawa Scale was undertaken for each paper that was included (Supplementary materials Table 3: Quality Assessment). To eliminate selection bias, all papers were included in analysis regardless of quality. Where we retrieved more than one article using the same data (such as the aMASE study or the PARCOURS study), we included the most recent article from the respective study groups.

Data extraction and analysis

Key information was extracted by author SM, including reporting country, method of classifying PMHA, number of migrants in the study and number of migrants who acquired HIV post-migration.

Studies were classified by reporting country, gender, sexuality, region of migrant origin, and method of PMHA classification, where available. Where exact numbers were not provided, we calculated figures for numbers of migrants with PMHA using the provided total number of migrants and proportions of PMHA.

Binomial proportions and standard errors were initially calculated for overall PMHA proportion for each study. We used the `metaprop` function in R to undertake a generalized linear mixed-effects model (GLMM) analysis by first fitting a logistic regression model to our extracted data and using maximum-likelihood to estimate τ^2 [7]. This is equivalent to applying a random-effects model for meta-analysis as the mixed-effects model contains an intercept, with the random effect connected to that intercept using a binomial logit-link. This model is the recommended method for meta-analysis of proportions [8].

GLMM meta-analysis was performed across all studies and subgroup analysis was undertaken by (a) reporting country, (b) region of origin, and (c) gender and sexuality, to estimate a weighted average for overall PMHA and PMHA by subgroup. Clopper–Pearson 95% confidence intervals (CIs) were calculated for each study estimate and pooled average estimates of PMHA. CIs for these results were capped at 0% and 100% for presentation of pooled estimates as percentages. I^2 statistic was calculated to quantify the extent of between-study heterogeneity in testing PMHA estimates. Analyses were performed in R, using the 'metagen' and 'metabin' functions in 'meta' [9, 10].

Results

From our initial search, which included additional records from reference lists, 2,320 publications were retrieved. After removal of duplicates, this was reduced to 1808. After preliminary abstract screening, 139 papers underwent full paper screening. Fifteen were included for final analysis (Table 1) [6, 11–24]. Fourteen of the papers were retrospective cohort or cross-sectional studies, whilst one was a prospective cohort study [21]. Six studies identified PMHA using clinical reporting, whilst nine studies used modelling of CD4 count or another biomarker. We found the included studies appropriate for quantitative pooling using meta-analysis.

The total pooled average proportion of PMHA was 0.30 (95% CI: 0.23–0.38; Figure 2). The individual results are summarized below in Table 2. The total pooled average proportion of PMHA was based on 47,182 migrants in 11 European countries. The I^2 test statistic was 99%, which indicates substantial heterogeneity between studies and the τ^2 was 0.40. The observed proportions of PMHA in individual studies ranged from 0.12 (95% CI: 0.04–0.26) to 0.63 (95% CI: 0.61–0.65) [22,23].

Host country

Five studies were based in the UK, two in Sweden, one in France, one in Greece, one in Italy, one in the Netherlands, and one in Switzerland. The remaining three studies reported on multiple countries [18, 19, 24]. Of these three studies, Panties *et al.* and Yin *et al.* both provided disaggregate numbers for PMHA within several 'host' countries, and these data are used where possible [29].

Our findings show no significant difference in proportion of PMHA between host countries (Figure 3). The greatest proportion of PMHA is seen in the Netherlands (0.54, 95% CI: 0.00–1.00), and the lowest is seen in Sweden (0.21, 95% CI: 0.14–0.30). The three papers which presented data estimating the level of PMHA in Sweden all found similar results, with one article using clinicians' records and the others using modelling [12, 24].

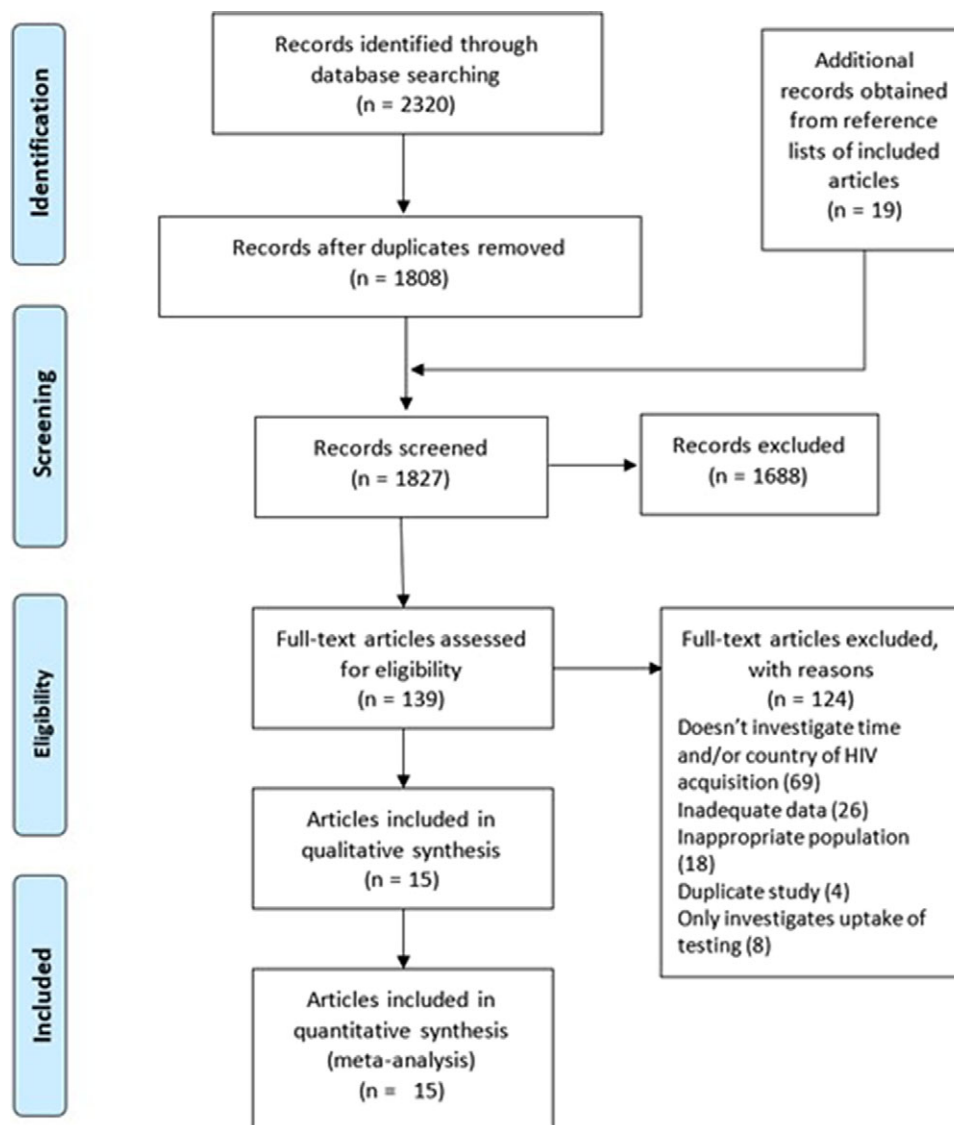


Figure 1. PRISMA flowchart of process for final inclusion of articles.

Region of origin

Eight papers included migrants from Africa [11, 12, 14, 18, 19, 21, 22, 24]; seven from Latin America and Caribbean [6, 11, 14, 15, 18, 21, 24]; and seven studies from Europe [12, 14, 18, 19, 21, 22, 24]. Five papers were included from Asia [14, 19, 21, 22, 24]. Data from South/Latin America were combined with data from the Caribbean as these studies included migrants from regions with a similar background prevalence of HIV [25]. We found no significant difference in the estimated proportion of PMHA between the four regions of origin for migrants in Europe (Figure 4). Estimated proportion of PMHA was lowest in migrants from Africa (0.24, 95% CI: 0.11–0.43) and highest in migrants from Asia (0.49, 95% CI: 0.35–0.62).

Gender and sexuality

Eight studies reported data on gender and sexuality [6, 12, 14, 15, 18, 21, 23, 24]. Of these, six included migrant MSM and five included heterosexual migrants. There was no significant difference in proportion of PMHA between males (0.44, 95% CI: 0.31–0.58)

and females (0.31, 95% CI: 0.19–0.47), although the overlap in confidence intervals between these two groups is small (Figure 5). There was a borderline significant difference in estimated proportion of PMHA between MSM migrants (0.51, 95% CI: 0.39–0.63) and heterosexual migrants (0.27, 95% CI: 0.17–0.39; Figure 6).

Method of PMHA classification

Studies which classified PMHA by clinical records describe using either self-reporting or evidence of a previous negative HIV test in the host country; however, Gras et al. also used proxies such as being sexually active only after migration [21]. The proportion of PMHA in these studies ranged from 0.12 (95% CI: 0.14–0.41; Manfredi et al. 2001) to 0.52 (95% CI: 0.48–0.58) [19, 22]. The forest plots for individual and pooled average PMHA estimates by method of PMHA classification are seen in Figure 7.

Nine articles used modelling to estimate PMHA: eight of these used CD4 count or viral load, either alone or in conjunction with clinical notes, whilst Paraskevis et al. investigated local transmission networks and then estimated country of infection based on

Table 1. Characteristics of study population for included studies

Source ^a	Country of study	Study type ^b	Migrant population			
			Ethnicity	Region of origin	Sexuality/gender	Other
Aggarwal <i>et al.</i> 2006	UK	Cross-sectional	Black African or Black Caribbean	Africa, Caribbean	Male only/ Homosexual/ bisexual, Heterosexual	—
Brannstrom <i>et al.</i> 2016	Sweden	Retrospective cohort	—	Continents: SSA, Asia/ Pacific, L. America, Europe, Asia etc	Male, Female/ Heterosexual, MSM	PWID, blood products
Brannstrom <i>et al.</i> 2017	Sweden	Retrospective cohort	—	African countries, Other	Male, Female/ Heterosexual, MSM	PWID, Other
Desgrees-du-Lou <i>et al.</i> 2015	France	Retrospective cohort	SSA	Western, Central or Eastern/Southern Africa	Male, Female	Education level, social hardship
Dougan <i>et al.</i> 2004	England, Wales & Northern Ireland	Retrospective cross- sectional	Black Caribbean, Other	Caribbean, Other	Heterosexual male, Heterosexual female, MSM	—
Dougan <i>et al.</i> 2005	England & Wales	Retrospective cross- sectional	Black African, Black Caribbean	Caribbean, SSA	Male/MSM	—
Gras <i>et al.</i> 1999	Netherlands	Prospective cohort	Surinamese, Antillean, SSA	Ghana, Nigeria, Surinam, Dutch Antilles	Male, Female	—
Manfredi <i>et al.</i> 2001	Italy	Case–control matching	—	22 Countries in Africa (13), Europe (5), S. America (2), Asia (2)	Male, Female	PWID, congenital
Pantazis <i>et al.</i> 2019	Belgium, France, Germany, Greece, Italy, the Netherlands, Portugal, Spain, Switzerland, UK	Retrospective cross- sectional	—	Europe, Africa, Asia, S America	Male, Female	—
Pantazis <i>et al.</i> 2021	EU & EEA countries	Retrospective cohort	—	SSA, W Europe, S Asia, Latin America, C Europe, Caribbean, Northern Africa & Middle East, E Europe, E Asia-Pacific, Australia & NZ	Male, Female, MSM, heterosexual	PWID
Paraskevis <i>et al.</i> 2017	Greece	Cross-sectional	—	—	—	PWID only
Rice <i>et al.</i> 2012	England, Wales & Northern Ireland	Cross-sectional	Black African, Black Caribbean, White, Other	Africa, Caribbean, Asia, Europe	Male, Female	—
Stahelin <i>et al.</i> 2004	Switzerland	Retrospective cohort	—	SSA, SE Asia, S Europe	Male, Female/ Heterosexual, MSM	IVDU, Other
Stirrup <i>et al.</i> 2022	UK	Retrospective cohort	—	Europe, Africa	Heterosexual male, heterosexual female, MSM	—
Yin <i>et al.</i> 2021	UK, Belgium, Sweden, Italy	Retrospective cohort	—	Europe, Africa, Caribbean + Latin America, North America, Asia-Pacific	Male, Female, heterosexual male, heterosexual female	—

Abbreviation: SSA, Sub-Saharan Africa; UK, United Kingdom.

^aSee References for full citations.

^bAll are observational (cohort or cross-sectional) studies.

behavioural/clinical data and phylogenetic analysis of strains [25]. The lowest proportion of PMHA among these studies was seen in Brannstrom *et al.* and Paraskevis *et al.* (0.19, 95% CI: 0.17–0.20; 0.19, 95% CI: 0.16–0.22), and the highest proportion was seen in

Pantazis *et al.* 2019 (0.63, 95% CI: 0.61–0.65) [18]. There was no significant difference in proportion of PMHA between studies using clinical records (0.25, 95% CI: 0.14–0.41) and studies using models (0.33, 95% CI: 0.23–0.44).

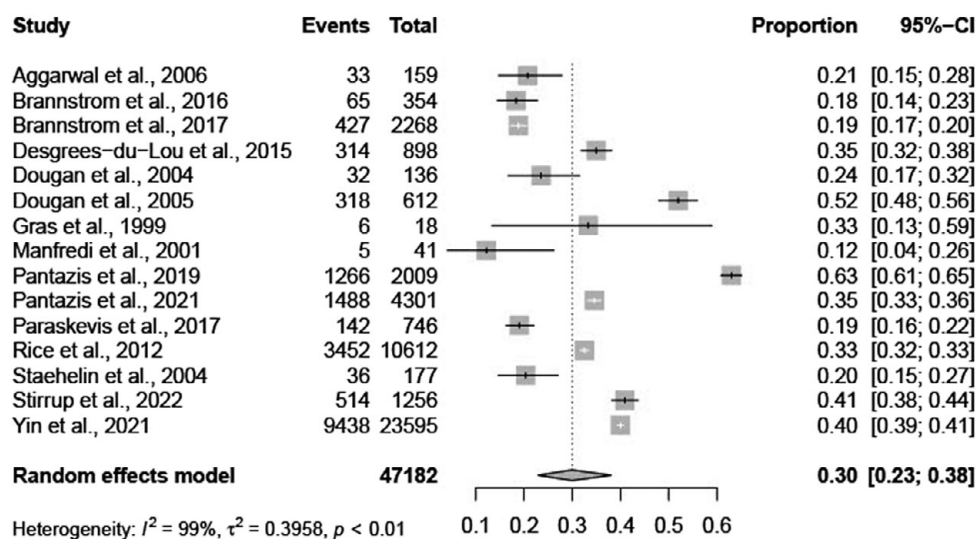


Figure 2. Forest plot of individual article and pooled average estimates for PMHA.

Table 2. Total participants and method of PMHA ascertainment in studies included

Source	Study population (no. of migrants)	No of migrants who acquired HIV post-migration	PMHA estimate using generalized linear mixed-effects model (95% CI) ^a	Method of determining PMHA	Study quality
Aggarwal et al. 2006	159	33	0.21 (0.15–0.28)	Clinical records	5
Brannstrom et al. 2016	354	65	0.18 (0.14–0.23)	Clinical records	9
Brannstrom et al. 2017	2,268	427	0.19 (0.17–0.20)	Model	9
Desgrees-du-Lou et al. 2015	898	(not reported)	0.35 (0.32–0.38)	Model	7
Dougan et al. 2004	136	32	0.24 (0.17–0.32)	Clinical records	5
Dougan et al. 2005	612	318	0.52 (0.48–0.56)	Clinical records	6
Gras et al. 1999	18	6	0.33 (0.13–0.59)	Clinical records	5
Manfredi et al. 2001	41	5	0.12 (0.04–0.26)	Clinical records	5
Pantazis et al. 2019	10,612	3,452	0.63 (0.61–0.65)	Model	9
Pantazis et al. 2021	177.2	36	0.35 (0.33–0.36)	Model	9
Paraskevis et al. 2017	746	142	0.19 (0.16–0.22)	Model	6
Rice et al. 2012	23,595	9,438	0.33 (0.32–0.33)	Model	9
Stahelin et al. 2004	(not reported)	(not reported)	0.20 (0.15–0.27)	Model	8
Stirrup et al. 2022	4,301	1,488	0.41 (0.38–0.44)	Model	8
Yin et al. 2021	2009	(not reported)	0.40 (0.39–0.41)	Model	9

^aIf PMHA was given as a range, or in studies which produced multiple estimates, the most conservative (i.e., the lowest) estimate was used.

Discussion

In this systematic review and meta-analysis, we aimed to assess the quantity of post-migration HIV acquisition (PMHA) in migrants to European countries. Although there have been some significant cohort studies assessing this, to our knowledge this is the first systematic review and meta-analysis of all the available data. We identified a total of fifteen studies and found the overall average proportion of PMHA across Europe was 30% (95% CI: 23–38%). This finding varied based on host country, region of origin, sex, sexuality, and method of classifying PMHA. The highest overall proportion was seen in Pantazis et al. (63%), and the lowest was seen in Manfredi et al. (12%) [22,23].

The variation seen in host country PMHA, from 0.21 (95% CI: 0.14–0.30; Sweden) to 0.54 (95% CI: 0.00–1.00; Netherlands), could reflect country-level differences in services for HIV prevention, diagnosis, and treatment. For example, PMHA was lowest in Sweden, thus indicating that HIV care is perhaps more accessible and effective in Sweden compared with other countries. Our results may reflect a lower rate of high-risk behaviours among migrant populations in Sweden. Alternatively, countries with a low PMHA, such as Sweden and Switzerland, may represent migrant populations with a higher level of pre-migration HIV acquisition due to a higher background prevalence of HIV, reducing post-migration HIV acquisition levels [26].

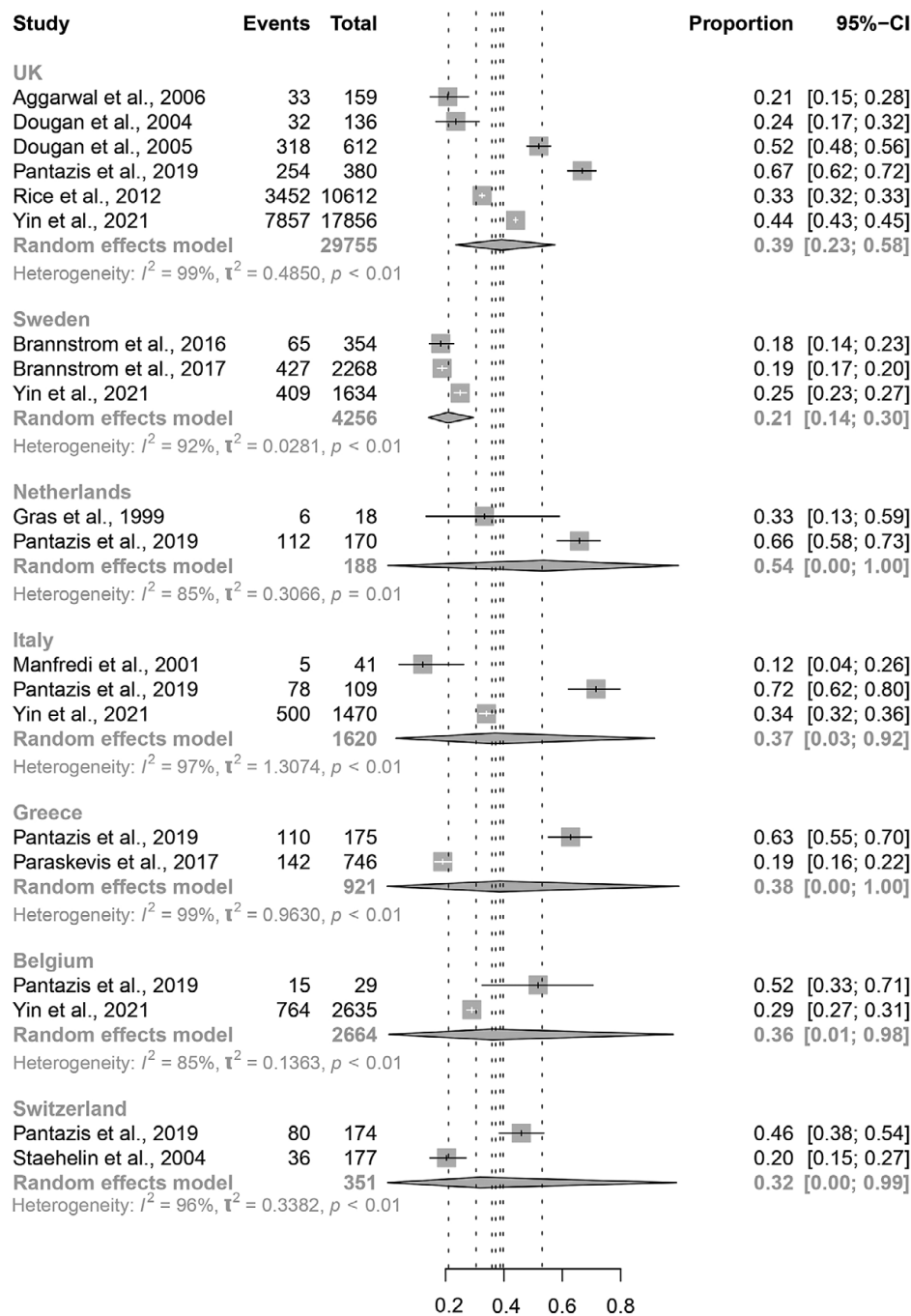


Figure 3. Forest plots for individual and pooled average PMHA estimates by host country.

The very large confidence intervals for overall PMHA in Netherlands, Italy, Greece, Belgium, and Switzerland reflect the heterogeneity of data within host countries and across time periods. For example, the proportion of PMHA in the Netherlands is 0.33 (95% CI: 0.13–0.59) according to Gras et al. in 1999, whereas in 2019 Pantazis et al. found that the proportion of PMHA in the Netherlands is 0.66 (95% CI: 0.58–0.73) [21,24]. This should be interpreted with caution in view of Gras et al.'s small sample size; the difference may reflect a true higher rate of PMHA in the Netherlands after 20 years, but it is likely also the result of better surveillance in 2019 compared with 1999.

As with analysis of other subgroup characteristics, our results for host countries are limited by factors related to differing migrant demographics, which may contribute to the variation in estimates seen for each country. For example, some of the UK papers only reported on Black African migrants, reducing the accuracy of our result for average PMHA in all UK migrants. Several countries lacked sufficient data for subgroup analysis, whereas the UK may be over-represented in this review, with five UK papers included. This suggests good clinical practice in the UK of recording estimated time/country of HIV infection. However, it could be due to a language bias in our search, as search terms were in English.

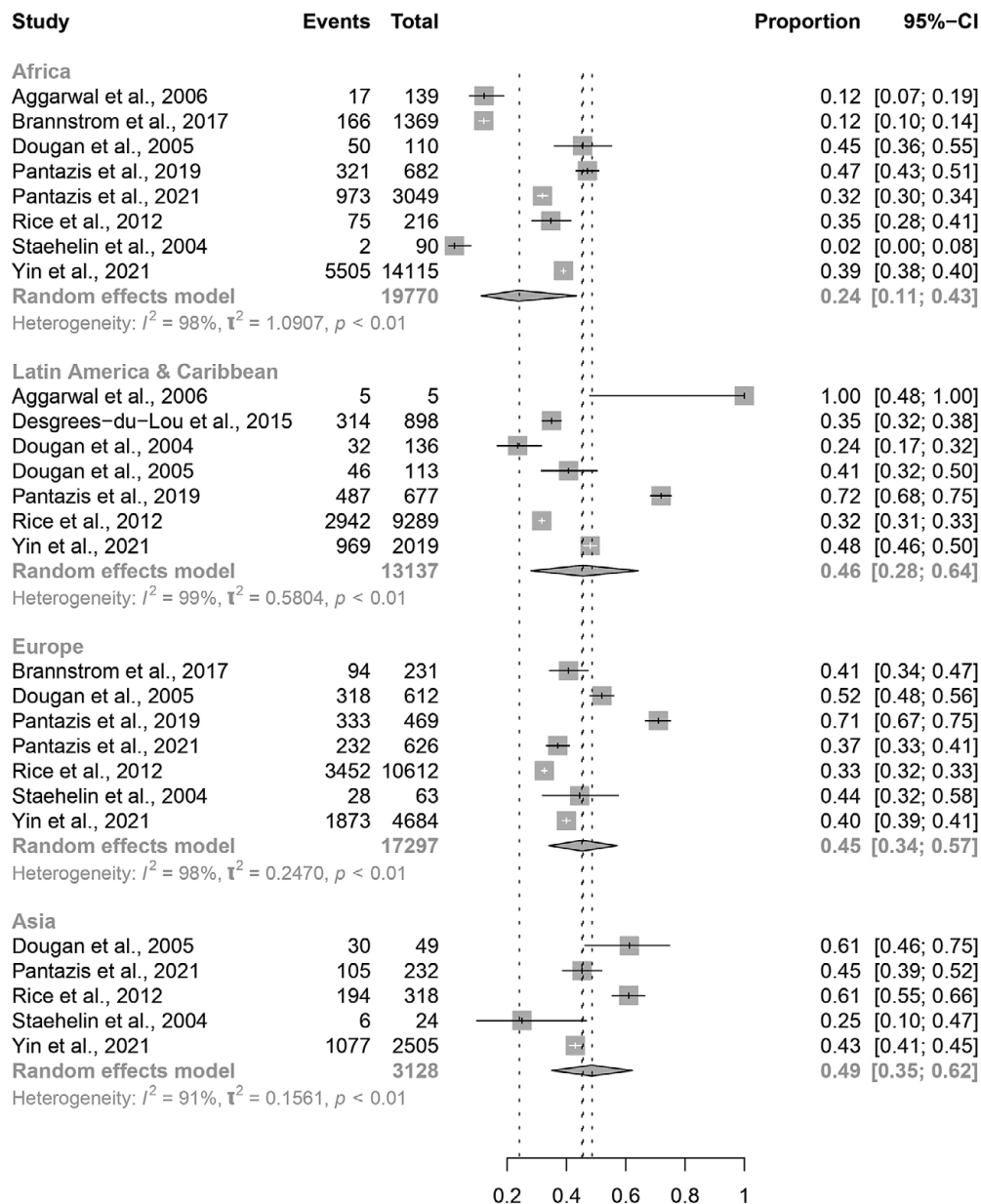


Figure 4. Forest plots for individual and pooled average PMHA estimates by migrant region of origin.

Migrants from African countries had a non-significantly lower proportion of PMHA than migrants from Europe, Latin America, Caribbean, and Asia. African migrants are more likely to come from high-prevalence countries, so a larger proportion may already have HIV at the time of migration; this would reduce the number of African migrants who are HIV-negative on entry and therefore at risk of HIV acquisition post-migration. However, a lower level of PMHA as a proportion of all HIV cases in migrants does not suggest a low overall number of African migrants acquiring HIV post-migration. Black African patients bear a large proportion of the burden of HIV in Europe, with migrants originating in sub-Saharan Africa representing 18% of HIV diagnoses in Europe in 2019 [27]; if 24% of these cases could have been acquired in the host country, this is nonetheless a significant number in the context of HIV diagnoses in Europe. This review included more migrants

from Africa ($n = 30,458$) than from Europe ($n = 7,088$), so our findings may have been influenced by disproportionate sampling.

The higher estimate for average PMHA in migrants from Asia, Latin America, Caribbean, and other European countries indicates that preventing HIV in these migrants should also be a public health priority in the host country. We did not have individual-level data to comment on which European countries migrants originated from, nor whether acquisition rates were comparable with that in the host countries' native populations, both of which might help to explain the result.

Gender and sexuality

Although not statistically significant, the higher proportion of PMHA in MSM migrants when compared with heterosexual

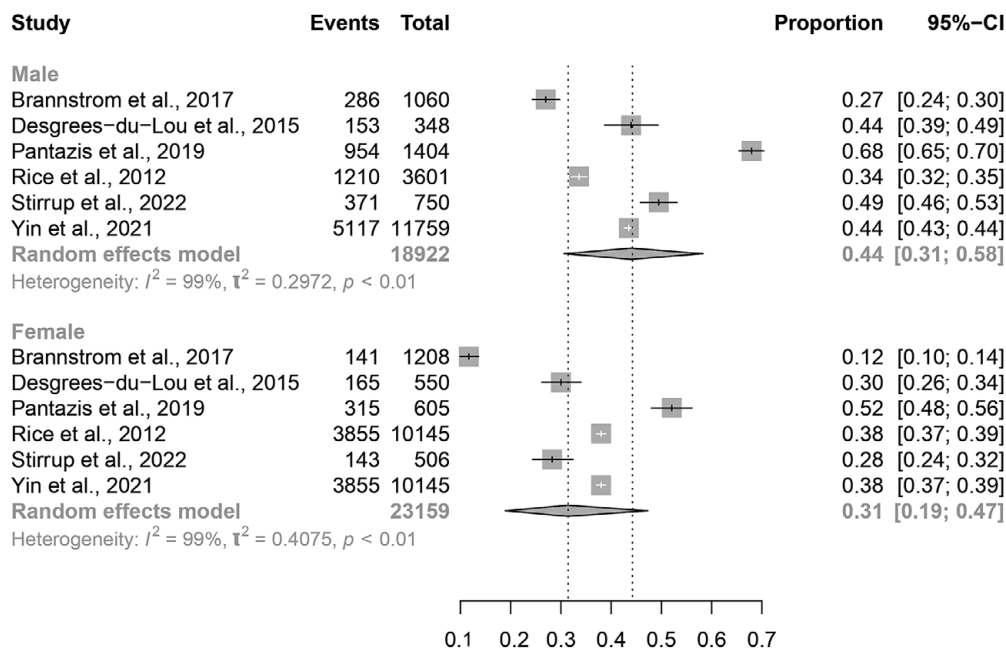


Figure 5. Forest plots for individual and pooled average PMHA estimates by migrant sex.

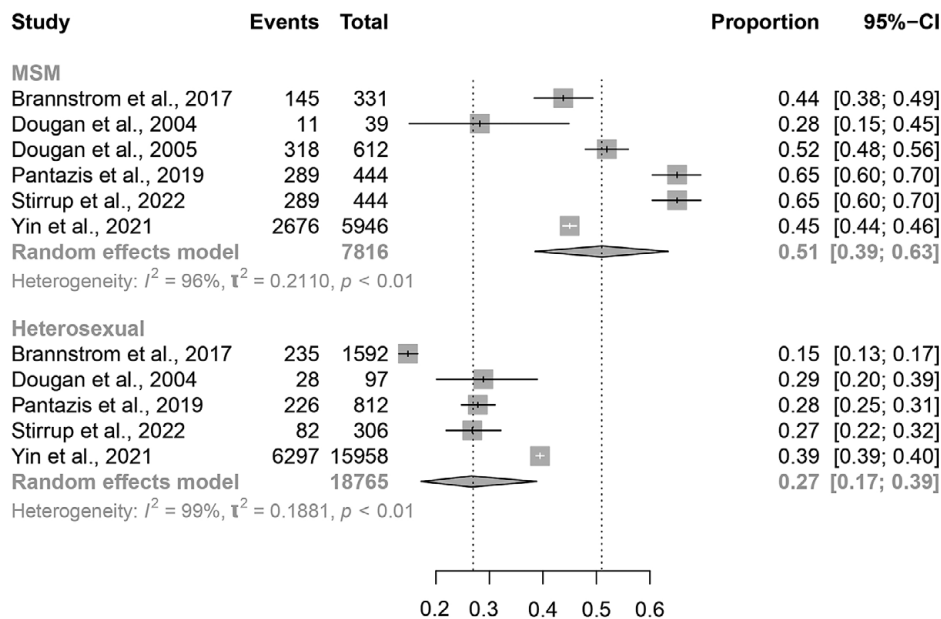


Figure 6. Forest plots for individual and pooled average PMHA estimates by migrant sexuality.

migrants likely reflects greater risk of HIV acquisition post-migration among MSM. Further research with a larger volume of individual-level data could directly compare PMHA in MSM with that in heterosexuals. Furthermore, more specific target groups for HIV prevention programmes could be identified by exploring PMHA among MSM migrants within the subgroup of region of origin. Of note, there were no statistically significant differences in the average PMHA among the subgroups of heterosexual migrants (total women, total men, heterosexual men), which is in keeping with the epidemiology of HIV generally and of that observed among Australian migrants post-migration [28].

Classifying PMHA

Average PMHA was higher when using CD4 or other biomarker modelling articles (0.33, 95% CI: 0.23–0.38) than average PMHA using clinical records (0.25, 95% CI: 0.14–0.41). Rice et al. and Brannstrom et al. estimated PMHA using ‘Life events’ and CD4 decline modelling separately, before comparing the two sets of outcomes; both studies confirmed that clinicians estimated a lower proportion of PMHA than mathematical models [26,27]. This may be due to risk of bias from self-reporting or in clinical history-taking. Using clinicians’ notes, we assumed that there was PMHA

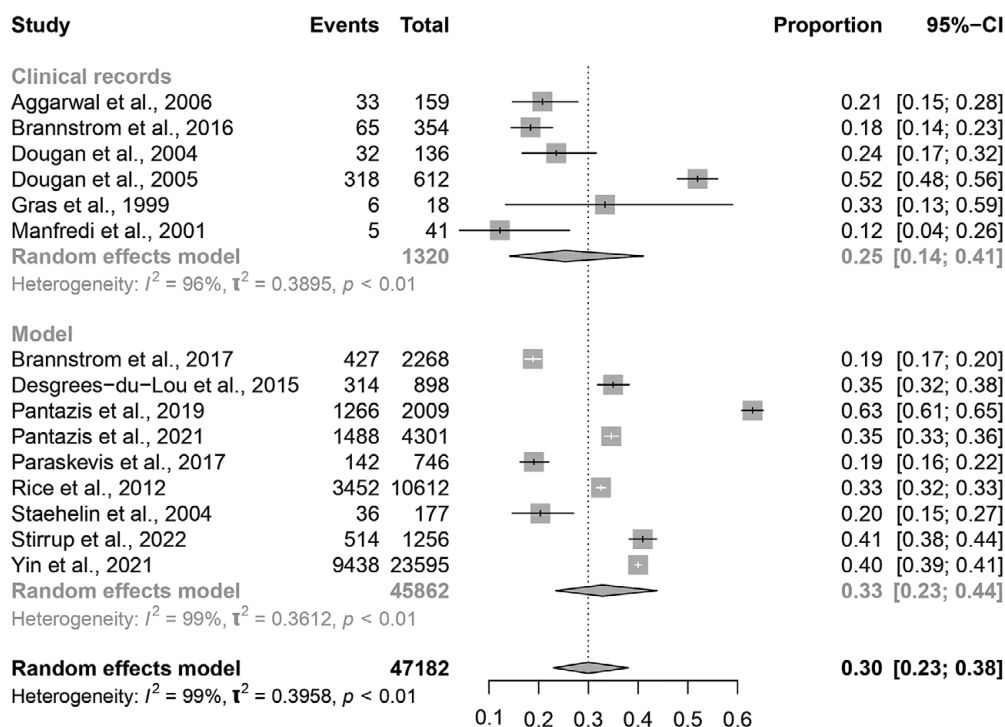


Figure 7. Forest plots for individual and pooled average PMHA estimates by method of PMHA classification.

only if the country of acquisition was recorded as the reporting country. However, if the clinician suspected HIV was acquired during a trip abroad taken after migration, the infection would be recorded as acquired 'outside of the country of residence'; using this data, we would falsely classify this case as 'not PMHA'. Thus, clinical data likely underestimated the proportion of PMHA [34]. Migrants travelling to their country of origin could be at increased risk of acquiring HIV post-migration and this therefore presents a public health priority for host countries [35,36].

CD4 modelling has been credited as a reliable method of producing an estimate of time of infection and as such, estimates from these papers are considered as the most reliable in this review. However, rate of CD4 cell decline is influenced by age, ethnicity, comorbidities, and strain of HIV; not all studies adjusted for these variables, which was considered in assessment of study quality [37,38].

The level of HIV acquisition depends on a multitude of factors that were not analysed in this review, including cultural practices, education level, and socio-economic status [39–43]. Some of these factors are likely to help explain the variation in PMHA found in this review. Demographic information about migrants with PMHA could inform future, targeted prevention interventions to reduce HIV transmission; this review calls for further research to provide individual-level demographic data.

In order to accurately define PMHA, multiple studies retrieved in our search, including high-quality articles which used data from the aMASE study or the PARCOURS study, had to be excluded to avoid duplicate data with Pantazis et al. 2019 and Desgrees du-Lou et al. 2015, respectively [10,11,23,44,45].

In order to strengthen consistency, studies were also excluded from our analysis if the authors' definition of migrant included second-generation migrants [46]. Among these was a 2013 ECDC report on HIV transmission in migrants within Europe: PMHA estimates in this report varied from 0.02–0.62 and authors found

that PMHA was lower in migrants from Africa than those from Asia or the Caribbean, corresponding with our findings [47].

Limitations

The main limitation for this study was heterogeneity in the articles included in analysis. Although we were able to undertake meta-analysis, variation in study design and migrant populations demographics, as well as method for PMHA classification, resulted in high I^2 statistics, indicating considerable heterogeneity in pooled results. Nonetheless, we have provided the most reliable estimate utilizing the most accurate data currently available. PMHA could be further investigated with more individual-level data and further information on factors that may have a confounding impact (e.g., migrant demographics, age, duration of residence in the reporting country, etc.)

Within subgroups, estimates varied, due to the relative smaller sample sizes and between study heterogeneity. Migrants are not a homogeneous group and thus fall into a variety of differing demographics, cultural practices, ideologies, and ultimately behaviours that cannot be simply classified or retrieved or adjusted for in our analysis. The heterogeneity observed is also likely due in part to changes in the level of PMHA over time. Data from the aMASE study are more current and show a higher average PMHA than other articles, so their results could indicate a recent increase in the proportion of PMHA in several reporting countries [23].

Further research is needed to find an accurate proportion of PMHA for different European countries or regions based on their unique profiles, that is, country demographics, health service structure, and patterns of migration. With better surveillance of PMHA in individual countries and across Europe, estimates could be compared with HIV risk for the native populations. This would not only allow for a far better understanding of the complex factors

contributing to the risk of PMHA on an individual migrant level, but also allow for better public health planning.

Conclusions

This review provides the most reliable estimate of PMHA based on the current literature. Our findings suggest that migrants continue to be at high risk of HIV acquisition in Europe. This indicates the need for targeted screening and HIV prevention interventions, ensuring resources are appropriately directed to combat the spread of HIV.

Supplementary material. The supplementary material for this article can be found at <http://doi.org/10.1017/S0950268824000372>.

Data availability statement. The data that support the findings of this study are openly available in the references listed.

Author contribution. Data curation: J.W., R.E., Z.M., S.M.; Formal analysis: J.W., R.E.; Conceptualization: R.E., Z.M., S.M.; Methodology: R.E., S.M.; Project administration: R.E.; Supervision: R.E.; Writing – review & editing: R.E., Z.M.; Investigation: Z.M., S.M.; Writing – original draft: S.M.

Funding statement. This work was supported by the Aage and Johanne Louis-Hansen (23-2B-13680) Foundation and the Danish National Research Foundation (DNRF148).

Competing interest. All authors have no competing interests to declare.

References

- [1] Seedat F, Hargreaves S and Friedland JS (2014) Engaging new migrants in infectious disease screening: A qualitative semi-structured interview study of UK migrant community health-care leads. *PLoS One* **9**(10), e108261.
- [2] Nkulu-Kalengayi FK, Jonzon R, Deogan C and Hurtig AK (2021) Evidence and gaps in the literature on HIV/STI prevention interventions targeting migrants in receiving countries: A scoping review. *Global Health Action* **14**(1), 1962039.
- [3] Kärki T, et al. (2014) Screening for infectious diseases among newly arrived migrants in EU/EEA countries—Varying practices but consensus on the utility of screening. *International Journal of Environmental Research and Public Health* **11**(10), 11004–11014.
- [4] Noori T, et al. (2021) Strengthening screening for infectious diseases and vaccination among migrants in Europe: What is needed to close the implementation gaps? *Travel Medicine & Infectious Disease* **39**, 101715.
- [5] Alvarez-Del Arco D, et al. (2017) High levels of postmigration HIV acquisition within nine European countries. *AIDS* **31**(14), 1979–1988.
- [6] Desgrées-du-Loû A, et al. (2015) Sub-Saharan African migrants living with HIV acquired after migration, France, ANRS PARCOURS study, 2012 to 2013. *Euro Surveillance* **20**(46), 1–9.
- [7] Harrer M, et al. (2021) *Doing Meta-Analysis with R: A Hands-on Guide*. Boca Raton, FL & London: Chapman & Hall/CRC Press.
- [8] Schwarzer G, et al. (2019) Seriously misleading results using inverse of Freeman–Tukey double arcsine transformation in meta-analysis of single proportions. *Research Synthesis Methods* **10**(3), 476–483.
- [9] Viechtbauer W (2010) Conducting meta-analyses in R with the metafor package. *Journal of Statistical Software* **36**(3), 1–48.
- [10] Balduzzi S, Rücker G and Schwarzer G (2019) How to perform a meta-analysis with R: A practical tutorial. *Evidence Based Mental Health* **22**(4), 153–160.
- [11] Aggarwal I, et al. (2006) Evidence for onward transmission of HIV-1 non-B subtype strains in the United Kingdom. *Journal of Acquired Immune Deficiency Syndromes* **41**(2), 201–209.
- [12] Brännström J, et al. (2017) A high rate of HIV-1 acquisition post immigration among migrants in Sweden determined by a CD4 T-cell decline trajectory model. *HIV Medicine* **18**(9), 677–684.
- [13] Brännström J, et al. (2016) Deficiencies in the health care system contribute to a high rate of late HIV diagnosis in Sweden. *HIV Medicine* **17**(6), 425–435.
- [14] Dougan S, et al. (2005) Epidemiology of HIV among black and minority ethnic men who have sex with men in England and Wales. *Sexually Transmitted Infections* **81**(4), 345–350.
- [15] Dougan S, et al. (2004) Black Caribbean adults with HIV in England, Wales, and Northern Ireland: An emerging epidemic? *Sexually Transmitted Infections* **80**(1), 18–23.
- [16] Gras MJ, et al. (1999) HIV prevalence, sexual risk behaviour and sexual mixing patterns among migrants in Amsterdam, the Netherlands. *AIDS* **13**(14), 1953–1962.
- [17] Manfredi R, Calza L and Chiodo F (2001) HIV disease among immigrants coming to Italy from outside of the European Union: A case-control study of epidemiological and clinical features. *Epidemiology and Infection* **127**(3), 527–533.
- [18] Pantazis N, et al. (2019) Determining the likely place of HIV acquisition for migrants in Europe combining subject-specific information and biomarkers data. *Statistical Methods in Medical Research* **28**(7), 1979–1997.
- [19] Pantazis N, et al. (2021) Discriminating between Premigration and Postmigration HIV acquisition using surveillance data. *Journal of Acquired Immune Deficiency Syndromes: JAIDS* **88**(2), 117–124.
- [20] Paraskevis D, et al. (2017) Molecular tracing of the geographical origin of human immunodeficiency virus type 1 infection and patterns of epidemic spread among migrants who inject drugs in Athens. *Clinical Infectious Diseases* **65**(12), 2078–2084.
- [21] Rice BD, et al. (2012) A new method to assign country of HIV infection among heterosexuals born abroad and diagnosed with HIV. *AIDS* **26**(15), 1961–1966.
- [22] Staehelin C, et al. (2004) Migrants from Sub-Saharan Africa in the Swiss HIV cohort study: A single center study of epidemiologic migration-specific and clinical features. *AIDS Patient Care and STDs* **18**(11), 665–675.
- [23] Stirrup O, et al. (2022) Diagnosis delays in the UK according to pre or postmigration acquisition of HIV. *AIDS* **36**(3), 415–422.
- [24] Yin Z, et al. (2021) Post-migration acquisition of HIV: Estimates from four European countries, 2007 to 2016. *Eurosurveillance* **26**(33), 2000161.
- [25] Collaborators GH (2019) Global, regional, and national incidence, prevalence, and mortality of HIV, 1980–2017, and forecasts to 2030, for 195 countries and territories: A systematic analysis for the global burden of diseases, injuries, and risk factors study 2017. *Lancet HIV* **6**(12), e831–e859.
- [26] FIALA D (2014) Migrants and refugees and the fight against AIDS. Parliamentary Assembly of the Council of Europe (22 January 2014).
- [27] WHO E (2020) European Centre for Disease Prevention and Control WHO Regional Office for Europe HIV/AIDS surveillance in Europe 2020, 2019 data.
- [28] Gunaratnam P, et al. (2019) HIV diagnoses in migrant populations in Australia—A changing epidemiology. *PLoS One* **14**(2), e0212268.
- [29] Yin Z, et al. (2021) Post-migration acquisition of HIV: Estimates from four European countries, 2007 to 2016. *Eurosurveillance*. **26**.
- [30] GBD 2017 HIV Collaborators (2019) Global, regional, and national incidence, prevalence, and mortality of HIV, 1980–2017, and forecasts to 2030, for 195 countries and territories: A systematic analysis for the Global Burden of Diseases, Injuries, and Risk Factors Study 2017. *Lancet HIV* **6**(12), e831–e859. [https://www.thelancet.com/journals/lanhiv/article/PIIS2352-3018\(19\)30196-1/fulltext](https://www.thelancet.com/journals/lanhiv/article/PIIS2352-3018(19)30196-1/fulltext)
- [31] Fiala D (2014) Migrants and refugees and the fight against AIDS. Parliamentary Assembly of the Council of Europe.
- [32] European Centre for Disease Prevention and Control and WHO Regional Office for Europe (2020) HIV/AIDS surveillance in Europe (2019 data).
- [33] Gunaratnam P, et al. (2019) HIV diagnoses in migrant populations in Australia—A changing epidemiology. *PLoS One* **14**, e0212268.
- [34] Dias S et al. (2020) The role of mobility in sexual risk behaviour and HIV acquisition among sub-Saharan African migrants residing in two European cities. *PLoS One* **15**(2), e0228584.

- [35] **Kramer MA**, et al. (2008) Migrants travelling to their country of origin: A bridge population for HIV transmission? *Sexually Transmitted Infections* **84**(7), 554–555.
- [36] **Loos J**, et al. (2017) First HIV prevalence estimates of a representative sample of adult sub-Saharan African migrants in a European city. Results of a community-based, cross-sectional study in Antwerp, Belgium. *PLoS One* **12**(4), e0174677.
- [37] **Vidya Vijayan KK**, et al. (2017) Pathophysiology of CD4+ T-Cell depletion in HIV-1 and HIV-2 infections. *Frontiers in Immunology* **8**.
- [38] **Montarroyos UR**, et al. (2019) Factors related to changes in CD4+ T-cell counts over time in patients living with HIV/AIDS: A multilevel analysis. *PLoS One* **9**(2), e84276.
- [39] **An Q**, et al. (2013) Association between community socioeconomic position and HIV diagnosis rate among adults and adolescents in the United States, 2005 to 2009. *American Journal of Public Health* **103**, 120–126.
- [40] **Gayles TA**, et al. (2016) Socioeconomic disconnection as a risk factor for increased HIV infection in young men who have sex with men. *LGBT Health* **3**, 219–224.
- [41] **Li YH**, et al. (2017) Modeling ecodevelopmental context of sexually transmitted disease/HIV risk and protective behaviors among African-American adolescents. *HIV/AIDS (Auckland)* **9**, 119–135.
- [42] **Pan SW**, et al. (2016) Religion and HIV sexual risk among men who have sex with men in China. *Journal of Acquired Immune Deficiency Syndromes* **73**, 463–474.
- [43] **Rojas P**, et al. (2016) Sociocultural determinants of risky sexual behaviors among adult Latinas: A longitudinal study of a community-based sample. *International Journal of Environmental Research and Public Health* **13**(11).
- [44] **Fakoya I**, et al. (2018) HIV testing history and access to treatment among migrants living with HIV in Europe. *Journal of the International AIDS Society* **21**(Suppl 4), e25123. <https://doi.org/10.1002/jia2.25123>.
- [45] **Pannetier J**, et al. (2018) Prevalence and circumstances of forced sex and post-migration HIV acquisition in sub-Saharan African migrant women in France: An analysis of the ANRS-PARCOURS retrospective population-based study. *Lancet Public Health* **3**, e16–e23. [https://doi.org/10.1016/S2468-2667\(17\)30211-6](https://doi.org/10.1016/S2468-2667(17)30211-6).
- [46] **Lot F**, et al. (2022) *Parcours sociomédical des personnes originaires d'Afrique subsaharienne atteintes par le VIH, prises en charge dans les hôpitaux d'Ile-de-France*. Institut de Deille Sanitaire.
- [47] **European Centre for Disease Prevention and Control** (2013) Migrant health: Sexual transmission of HIV within migrant groups in the EU/EEA and implications for effective interventions. Stockholm. Report No.: 978-92-9193-495-9.