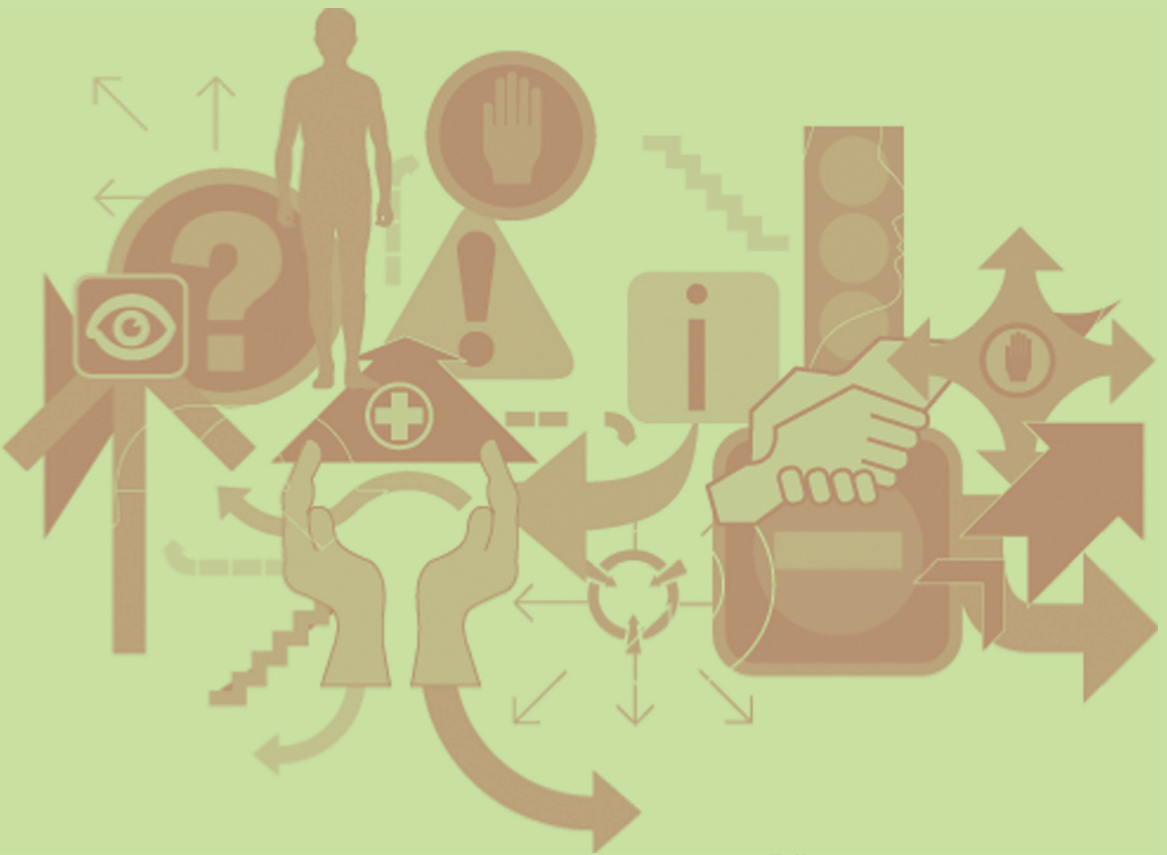


# The Australian Journal of **Rehabilitation Counselling**

[journals.cambridge.org/jrc](http://journals.cambridge.org/jrc)



**Editor**

**Elias Mpofu PhD, DEd, CRC**  
The University of Sydney



**CAMBRIDGE**  
UNIVERSITY PRESS

# The Australian Journal of Rehabilitation Counselling

## EDITORIAL BOARD

### Editor

Elias Mpofu, PhD, DEd, CRC  
*The University of Sydney, Australia*

### Associate Editors

Gregory C. Murphy, PhD  
*La Trobe University, Australia*

Fong Chan, PhD, CRC  
*University of Wisconsin-Madison, USA*

### Consulting Editors

Beatrix Algurén, PhD  
*Jönköping University, Sweden*

Fiona Allpass, PhD  
*Massey University, New Zealand*

James Athanasou, PhD  
*University of Sydney, Australia*

Scott Beveridge, PhD, LCPC, CRC, CDMS  
*The George Washington University, USA*

Herbert C. Biggs, PhD  
*Queensland University of Technology, Australia*

Dan Bilsker, PhD  
*University of British Columbia, Canada*

Malachy Bishop, PhD, CRC  
*University of Kentucky, USA*

Nicholas Buys, PhD  
*Griffith University, Australia*

Lesley Chenoweth, PhD  
*The University of Queensland, Australia*

Chung-Yi Chiu, PhD  
*University of Texas Southwestern Medical Center, USA*

Chih Chin Chou, PhD, CRC  
*University of Arizona, USA*

Julie Chronister, PhD  
*San Francisco State University, USA*

Ross Crisp, PhD  
*Commonwealth Rehabilitation Service, Australia*

Judith Crockett, PhD  
*Charles Sturt University, Australia*

Patricia Dorsett, PhD  
*Griffith University, Australia*

Graeme Douglas, PhD  
*University of Birmingham, UK*

Caroline Ellison, PhD  
*Flinders University, Australia*

Jennifer Harris, PhD  
*University of Dundee, Scotland, UK*

Debra Homa, PhD  
*University of Wisconsin-Stout, USA*

Ebonee T. Johnson, PhD  
*Southern University*

Eun-Jeong Lee, PhD, CRC, LCPC  
*Illinois Institute of Technology, USA*

Peter Kennedy, PhD  
*Oxford University, UK*

Teresa Krupa, PhD  
*Queen's University, Canada*

Frank Lane, PhD, CRC, LCPC  
*Illinois Institute of Technology, USA*

Gloria Lee, PhD, CRC  
*State University of New York-Buffalo, USA*

Jen-Yi Li, PhD  
*Nanyang Technological University, National Institute of Education, Singapore*

Mandy Matthewson, PhD  
*University of Tasmania, Australia*

David Peterson, PhD  
*California State University, USA*

Doria Pilling, MA  
*City University London, UK*

Bruce J. Reed, PhD  
*University of Texas Pan American, USA*

Jon A. Sanford, M. Arch  
*Georgia Institute of Technology, USA*

Jared C. Schultz, PhD, CRC  
*Utah State University, USA*

Andrew M.C. Siu, PhD  
*The Hong Kong Polytechnic University, China*

Gerold Stucki, MD, MS,  
*University of Lucerne, Switzerland*

Annabel Taylor, PhD  
*University of Canterbury, New Zealand*

Nguyen Viet Nhan, MD, PhD  
*Hue University, Vietnam*

Kate van Heugten, PhD  
*University of Canterbury, New Zealand*

Ming Hung Wang, PhD  
*National Changhua University of Education, Taiwan*

Jun Yaeda, Rh.D.,  
*University of Tsukuba, Japan*

Jacob Yui-Chung Chan, PhD  
*Ball State University, USA*

### Book Review Editors

Tinashe M Dune  
*University of Sydney, Australia*

Michael Millington, PhD  
*The University of Sydney, Australia*

### Student Manuscripts

Rana Yaghmaian, MS, CRC,  
*University of Wisconsin-Madison*

### Journal Office Manager

David George, FASRC  
*Australian Society of Rehabilitation Counsellors*

Elias Mpofu, PhD, DEd, CRC  
*The University of Sydney, Australia*

### Subscription Rates 2014

This journal is published twice a year.  
The institutional rates (excluding VAT) are:

	Print and online	Online only
Australia	192 AUD	176 AUD
N America	209 USD	191 USD
UK and ROW	135 GBP	124 GBP

EU subscribers (outside the UK) who are not registered for VAT should add VAT at their country's rate. VAT registered subscribers should provide their VAT registration number. Prices include delivery by air when appropriate. Japanese prices for institutions are available from Kinokuniya Company Ltd, P.O. Box 55, Chitose, Tokyo 156, Japan.

### Orders and subscription enquiries should be addressed to:

Cambridge University Press  
The Edinburgh Building, Shaftesbury Road,  
Cambridge CB2 8RY, UK

### Orders from N America should be addressed to:

Cambridge University Press  
Journals Fulfillment Department,  
100 Brook Hill Drive, West Nyack,  
NY 10994-2133, USA

*The Australian Journal of Rehabilitation Counselling* and all other Cambridge Journals can be found at  
<http://journals.cambridge.org/>

Personal subscriptions to the Journal is covered by membership to the Australian Society of Rehabilitation Counsellors.

For all inquiries please contact ASORC at  
[www.asorc.org.au](http://www.asorc.org.au)

### Advertising Rates

The Australian Journal of Rehabilitation Counselling is a not-for-profit publication that is circulated to approximately 850 persons, including all members of the Australian Society of Rehabilitation Counsellors. The journal will accept advertising that may be of interest to its readers.

In the Americas, please contact  
[USADSales@cambridge.org](mailto:USADSales@cambridge.org)

For the Rest of World, please contact  
[ad\\_sales@cambridge.org](mailto:ad_sales@cambridge.org)

The Australian Journal of Rehabilitation Counselling (ASORC) is published twice a year and issued to all financial members of the Australian Society of Rehabilitation Counsellors.

Copyright in all articles rests with authors. A limited set of permanent copyright permission licences has been granted by authors to the publisher to allow publication in this journal. Rights in the reproduction and distribution of the published articles as visual facsimiles of this published edition by either mechanical or digital means is controlled by the publisher and any distributions by CAL for copying of an author's work therefore are due to the publisher and ASORC only.

All other rights in the words contained in this edition are controlled by the authors. Authors are therefore free to adapt and/or republish the words making up their own articles either online or in print.

#### Published for

the Australian Society of Rehabilitation Counsellors by Cambridge University Press, University Printing House, Shaftesbury Road Cambridge CB2 8BS United Kingdom

[journals.cambridge.org](http://journals.cambridge.org)

## Articles

- Mechanisms of Change in Psychotherapy for People Diagnosed with Schizophrenia: The Role of Narrative Reflexivity in Promoting Recovery 1

*Melissa Greben, Robert D Schweitzer, and Rebecca Bargenquast*

- An Analysis of Responses on the *Earning Capacity Assessment Form-2* 15

*James A. Athanasou*

- Needs, Challenges and Goals of Australian Women With Disabilities: A Preliminary Survey 28

*Stacey Copas and Diana Dorstyn*

- Use of Motivational Interviewing to Improve Return-to-work and Work-related Outcomes: A Review 38

*Kathryn M. Page and Irina Tchernitskaia*

- Working Therapeutically with Parents after the Diagnosis of a Child's Cerebral Palsy: Issues and Practice Guidelines 50

*Jodi Higginson and Mandy Matthewson*

## Book Review

- Hoi Ling Irene Mok* 67