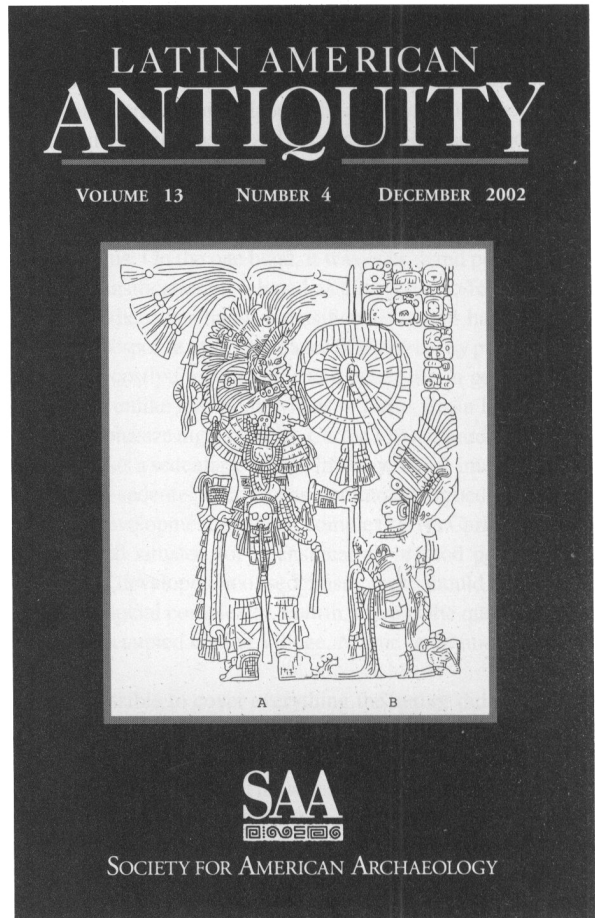


ARTICLES

- 371 Irrigation and the Origins of the Southern Moche State on the North Coast of Peru
Brian R. Billman
- 401 Getting Closer to the Source: Using Ethnoarchaeology to Find Ancient Pottery Making in the Naco Valley, Honduras
Samuel V. Connell
- 419 Left/Right Symbolism and the Body in Ancient Maya Iconography and Culture
Joel W. Palka

REPORTS

- 444 Evidence for Early Long-Distance Obsidian Exchange and Watercraft Use from the Southern Lake Titicaca Basin of Bolivia and Peru
Charles Stanish, Richard L. Burger, Lisa M. Cipolla, Michael D. Glascock, and Esteban Quelimá
- 455 Roedores Y Lagartos Como Emergentes De La Diversificacion De La Subsistencia Durante El Holoceno Tardio En Sierras De La Region Pampeana Argentina
Carlos Adrián Quintana, Federico Valverde, y Diana Leonis Mazzanti



REVIEWS AND BOOK NOTES

Reviews

- 474 Shaping Culture: Making Pots and Constructing Households: An Ethnoarchaeological Study of Pottery Production, Trade and Use in the Andes, by Bill Sillar
Michael Deal

Book Notes

- 476 History of the Conquest of Mexico and History of the Conquest of Peru, by William H. Prescott
Edward E. Calnek
- 476 Central America: A Natural and Cultural History, edited by Anthony G. Coates
John W. Hoopes
- 477 **Index to Volume 13**

NOTICE TO AUTHORS

American Antiquity publishes original papers on the archaeology of the New World and on archaeological method, theory, and practice worldwide. Authors of papers on Latin American topics are encouraged to submit their work to *Latin American Antiquity*. Papers on Latin American archaeology addressing broad methodological, theoretical, or comparative issues may be accepted by either journal after consultation with the editors. Authors submit manuscripts to the editor for consideration as ARTICLES, REPORTS, COMMENTS, or FORUM essays. REVIEWS and BOOK NOTES are solicited by the respective associate editor. OBITUARIES should be submitted to the editor, *The SAA Archaeological Record*, for publication (see *SAA Bulletin* March/April 1996, p. 7, for further details).

Authors should submit an original and four copies of their manuscripts, including all figures, tables, references, and notes. Detailed information on policy, style, and technical matters of manuscript preparation is given in the "Editorial Policy, Information for Authors, and Style Guide for *American Antiquity* and *Latin American Antiquity*," which appeared in the October 1992 issue (57:749–770) and can be read on the World Wide Web at <http://www.saa.org/Publications/StyleGuide/styframe.html>.

The editor reserves the right to evaluate manuscripts (with or without peer review) for appropriate subject matter, quality, length, and compliance with the style guide. Manuscripts may be returned to authors if they fail to meet expectations or conform to these guidelines. Manuscripts are evaluated by the editor in consultation with peer referees, as appropriate. The editor has the final responsibility for all decisions regarding manuscripts. The review process generally takes a minimum of two to four months. Authors will be notified as soon as a decision is reached to accept (outright or with revisions) or reject a manuscript.

To ensure the prompt receipt and handling of manuscripts, please send them to the editor: Timothy A. Kohler, Department of Anthropology, Washington State University, Pullman, WA 99164-4910. Inquiries regarding the style guide and the production of the journal should be directed to: John Neikirk, Society for American Archaeology, 900 Second Street, N.E., Suite 12, Washington, DC 20002-3557.

ARTICLES

- 5 Lithic Source Use and Paleoarchaic Foraging Territories in the Great Basin
George T. Jones, Charlotte Beck, Eric E. Jones, and Richard E. Hughes
- 39 Resettled Farmers and the Making of a Mississippian Polity
Timothy R. Pauketat
- 67 New Interpretations of Mimbres Public Architecture and Space: Implications for Cultural Change
Darrell Creel and Roger Anyon

REPORTS

- 93 Postmarital Residence Practices in the Windover Population: Sex-Based Dental Variation as an Indicator of Patrilocality
Paula D. Tomczak and Joseph F. Powell
- 109 Collective Burial in Late Prehistoric Virginia: Excavation and Analysis of the Rapidan Mound
Gary H. Dunham, Debra L. Gold, and Jeffrey L. Hantman
- 129 Isotopic Evidence for Diet in the Seventeenth-Century Colonial Chesapeake
Douglas H. Ubelaker and Douglas W. Owsley
- 141 End Scraper Reduction and Hunter-Gatherer Mobility
Brooke S. Blades

COMMENTS

- 157 Cultural Collapses in the Northwest: A Reply to Ian Kuijt
Brian Hayden and June Ryder
- 161 Gordon Creek Woman Meets Spirit Cave Man: A Response to Comment by Owsley and Jantz
Alan Swedlund and Duane Anderson
- 169 Hohokam Political Ecology and Vulnerability: Comments on Waters and Ravesloot
Bradley E. Ensor, Marisa O. Ensor, and Gregory W. De Vries

BOOK REVIEW ESSAY AND REVIEWS

Book Review Essay

- 182 Social Conflict, Social Structure and Processes of Culture Change
Stephen Plog
- *Warless Societies and the Origin of War*, by Raymond C. Kelly
 - *Deadly Landscapes: Case Studies in Prehistoric Southwestern Warfare*, edited by Glen E. Rice and Steven A. Leblanc

On the Cover: Obsidian conveyance zones in the Great Basin during the terminal Pleistocene and early Holocene (from "Lithic Source Use and Paleoarchaic Foraging Territories in the Great Basin," by George T. Jones, Charlotte Beck, Eric E. Jones, and Richard E. Hughes, p. 31).

⊗ The paper used in this publication meets the requirements of ANSI/NISO Z39.48-1992 (Permanence of Paper).