

# INFORMATION FOR CONTRIBUTORS

---

*Environmental Practice* is an English-language journal published quarterly by the National Association of Environmental Professionals. It serves an international audience of environmental professionals in practice and research. *Environmental Practice* is peer-reviewed and accepts original manuscripts that have not previously been published in whole or in part in a peer-reviewed journal or in a widely available book. The general philosophy of the journal is outlined in the Mission Statement, which is reproduced in full at the end of the Table of Contents in each issue.

Priority for publication is given to manuscripts that offer clear, insightful views on an environmental problem from an interdisciplinary perspective. *Environmental Practice* seeks especially to publish studies that link data and findings in science and technology with issues of public policy, health, environmental quality, law, political economy, management, and the appropriate standards for expertise. Because the readership of *Environmental Practice* is very broadly based, manuscripts should not be burdened by extensive, unexplained, technical language familiar only to a small group of specialists.

Manuscripts are accepted throughout the year. News items should be submitted by the first day of the month, three months prior to publication. For example, news items to appear in December should be submitted by 1 September.

## Kinds of Manuscripts Sought

*Environmental Practice* publishes several categories of manuscripts as described below. Three of these categories, Research Articles, Environmental Reviews, and Commentaries, are peer-reviewed.

**Research Articles:** manuscripts that report the results of systematic study on an environmental problem. Typically, research articles will (a) report the results of a formal research exercise or (b) summarize sys-

tematic analysis of one or more case studies of particular interest. Environmental professionals in academic or research laboratory settings may be more likely to submit formal research reports. Professionals in consulting practice, agencies, or other organizations may be more likely to submit manuscripts based on case studies. Under most circumstances, Research Articles will not be over 5000 words of text. Most will be substantially shorter. Tables, figures, and reference lists need not be included in the word count. All Research Articles are peer-reviewed.

**Environmental Reviews:** manuscripts that organize and summarize a research literature or case study literature that is otherwise scattered and not easily accessible. Environmental Reviews will generally not be over 6000 words of text. Tables, figures, and reference lists need not be included in the word count. Most will be solicited, but contributions are welcome after consultation with the editor. All Environmental Reviews are peer-reviewed.

**Commentaries:** manuscripts that discuss a particular subject or problem. Typically, these manuscripts will identify the subject and discuss it in terms of (a) recent research of importance, (b) the implications of research for practice, (c) the interactions among research, policy, and practice, or (d) the social, cultural, economic, legal, or ethical context of the subject. Under most circumstances, Commentaries will not be over 2500 words. Tables, figures, and reference lists need not be included in the word count. All Commentary manuscripts are peer-reviewed.

**Book Reviews:** manuscripts that portray the content, quality, and significance of books of wide interest to environmental professionals and their practices. Book Reviews should not exceed 650 words, but with the approval of the editor may reach 1300 words.

**News Articles:** manuscripts that report on (a) an environmental situation or events of

broad interest to environmental professionals, or (b) events and activities of the National Association of Environmental Professionals and its Chapters, Committees, and Working Groups. News Articles will generally range from 50 to 2000 words, depending on the subject. Tables, figures, and reference lists need not be included in the word count. Only in rare circumstances will News Articles be subjected to peer-review.

**Points-of-View:** statements of opinion intended to provoke discussion and debate on particular issues. These manuscripts will generally range from 200 to 650 words. Such manuscripts will not be subject to peer-review, because they are personal opinion. However, the editor may seek advice on matters of tone and fairness.

**Letters to the Editor:** responses to Research Articles, Environmental Reviews, Commentaries, Book Reviews, News Articles, Points-of-View, and Editorials. These manuscripts will generally range from 50 to 500 words. Letters to the Editor will not be peer-reviewed, but they may be used to solicit responses from others for simultaneous publication.

The editors welcome inquiries about manuscript ideas. You may also contact the editors to request exceptions to the word count limits given above. The Editor-in-Chief, Dr. John H. Perkins, can be reached at 360-866-6000, ext. 6503 or <perkinsj@elwha.evergreen.edu>. You can reach the Managing Editor, Dr. Catherine A. French, at 360-866-6000, ext. 5955 or <frenchca@evergreen.edu>.

## Manuscript Preparation and Submission

1. Membership in the National Association of Environmental Professionals is not a requirement for acceptance of a manuscript for publication in *Environmental Practice*.
2. Send the original and four clear copies of Research Articles, Environmental Reviews,

and Commentaries. Send the original and two clear copies of Book Reviews, News Articles, Points-of-View, and Letters to the Editor. Please indicate the kind of manuscript intended. [Note: Figures based on original artwork should be submitted for review as good copies; the author should retain the originals until the manuscript is accepted.]

3. Manuscripts should be sent to the editorial office:

Dr. Catherine A. French, Managing Editor  
*Environmental Practice*  
Mailstop SEM 3127  
The Evergreen State College  
2700 Evergreen Parkway NW  
Olympia, Washington 98505 USA

4. Traditions in style and documentation differ considerably among the different disciplines published in *Environmental Practice*. Accordingly, the journal will accept manuscripts reflecting a wide variety of these established traditions. Nevertheless, authors should use the following conventions in the different parts of their manuscripts, and the manuscripts should be ordered in the following way:

- a. **Cover sheet:** Attach a cover sheet including author name(s); title or position; institutional affiliation; corresponding author address, telephone number, Fax number, and E-mail address, and study sponsors, if any. Both the cover sheet and first page should include the manuscript's title. All pages should be numbered, with the cover sheet as page 1. To facilitate blind peer reviews, author names and affiliations should appear only on the cover sheet.
- b. **Acknowledgments-Abbreviations-Key words:** Place on a separate sheet, located after the cover sheet. This journal resists the use of acronyms and other forms of abbreviation. As a general rule, an acronym is appropriate only (a) if it is used frequently in a portion or all of a manuscript or (b) if the acronym itself has entered common usage in everyday conversation (e.g., "EPA" for the "United States Environmental Protection Agency"). The use of more than two different acronyms in one manuscript is unlikely to be acceptable. If abbreviations or acronyms are used, they should be explicitly

listed and defined on a separate sheet. For indexing purposes, provide up to eight key words or phrases.

- c. **Abstract:** Manuscripts of Research Articles, Environmental Reviews, and Commentaries should be accompanied by an abstract of no more than 200 words. Abstracts should be a stand-alone summary of the manuscript's central findings and argument, not an overview of the manuscript's outline.
- d. **Text**

1. **Organization:** Research Articles and Environmental Reviews prepared by authors schooled in the natural and social sciences will typically have separate sections for Introduction, Methods, Results, Discussion, and Conclusions. Authors schooled in the legal and humanistic disciplines are likely to organize their materials in a way that illuminates the logical connections between different elements of the argument. In all cases, use appropriate section headings to help guide the reader.

2. **Physical features:** Manuscripts, including references, tables, legends, and quotations, should be typed, double spaced, on one side of white paper with margins of at least one inch on all sides, and without right-hand justification. Figures should be clear prints of electronic versions or good copies of original artwork. All manuscripts should be sent to the Editorial Office (address above). In all cases, authors should retain a copy of the complete manuscript for their files.

- e. **Documentation and references:** This journal recognizes that authors trained in different disciplines frequently use different methods for providing documentation. Therefore, the first guideline is that authors should use a standard system for their discipline. Whatever system is used should allow all readers (even people trained in different disciplines) to have easy access to an author's references. The style used should also be consistent throughout the manuscript. Authors may use either one of the two systems listed below.

1. **Author-date.** This system is widely used in the natural and social sciences. Refer-

ences are cited in text like so: "Smith (1990) showed . . ." or "as seen elsewhere (Smith, 1990)." References cited in text are listed alphabetically in a References section at the end of the manuscript. The following examples illustrate an appropriate style for most kinds of documents listed in the References section:

*Article in journal*

Author, A.B., and C.D. Author. 1997. Title of Article. *Name of Journal* Volume(Issue):starting page number-ending page number.

*Article or chapter in book*

Author, A.B., C.D. Author, and E.F. Author. 1998. Title of Article or Chapter. In *Title of Book*, G.H. Editor and I.J. Editor, eds., 4th edition. Publisher, Place of Publication, starting page number-ending page number.

*Book*

Author, A.B., and C.D. Author. 1994. *Title of Book*. Publisher, Place of Publication, total pages in book.

*Edited book*

Editor, A.B., and C.D. Editor, eds. 1996. *Title of Book*. Publisher, Place of Publication, total pages in book.

*Dissertation or thesis*

Author, A.B. 1998. *Title*, (Ph.D. Dissertation) OR (Master's Thesis). University, City, State, total pages in document.

*Reports by author*

Author, A.B. 1993. *Title of report*. Report Number, Agency, City, State, total pages in report.

*Reports by agency*

Name of agency. 1995. *Title of report*. Report Number, City, State, total pages in report.

*Personal communication (e.g., letter, telephone, e-mail, interview)*

Person, A.B. 1999. Personal communication, Day-Month. Person's title or position, Person's agency or organization, City, State.

*Web sites*

Name of Site/Subsection of Site. Year of access to site. *Title of subsection*. URL address of site. Day-Month of access to site.



2. *Endnotes*. Endnotes consist of a superscript number in the text and a corresponding, numbered list of citations placed at the end of the text. This method of documentation is frequently used in historical, legal, or humanistic writing, and it is useful for citations that must contain more than one reference. Endnotes with more than one reference should be separated by semi-colons. Avoid, if possible, use of endnotes simply to further explain the text rather than to provide documentation. Subsequent references to a source should give the last name of the author(s), shortened title, and relevant page(s). Do not use *op. cit.*, *ibid*, *idem*, *infra*, or *supra*. See *The Chicago Manual of Style* for details not addressed here. The following examples illustrate proper style for endnotes:

*Article in journal*

A.B. Author and C.D. Author, 1997, "Title of Article," *Name of Journal* Volume(Issue):starting page number-ending page number.

*Article or chapter in book*

A.B. Author, C.D. Author, and E.F. Author, 1998, "Title of Article or Chapter," in *Title of Book*, G.H. Editor and I.J. Editor, eds., 4th edition, Publisher, Place of Publication, starting page number-ending page number.

*Book*

A.B. Author and C.D. Author, 1994, *Title of Book*, Publisher, Place of Publication, total pages in book.

*Edited book*

A.B. Editor and C.D. Editor, eds., 1996, *Title of Book*, Publisher, Place of Publication, total pages in book.

5. Authors are encouraged to illustrate their work with tables, figures, and photographs. Authors of accepted manuscripts must provide original illustrations on disk or in camera-ready form. Color photographs will be included only if they are essential for the integrity of the manuscript; all costs of color photos must be paid by the author(s). Tables should not duplicate data also provided in figures or in the text. For tables of data that might be of value only to a few readers, authors should consider indicating

that the data is available on request from the author. Table and Figure legends should make them understandable without reference to the text. Tables and Figures must be referred to in the text. The manuscript text should indicate the desired location of each Table and Figure.

6. Use the International System of Units (SI) or metric units. If necessary for clarity or common usage, other units may be included in parentheses immediately following the acceptable units.

7. *Environmental Practice* uses a double-blind peer-review process. The reviewer will not know the identity or location of the author(s), and the author(s) will receive reviewer's comments without the reviewer's identity or location. Authors are invited to submit names of appropriate reviewers, but the final choice of reviewers lies with the editor. Authors will be notified of the disposition of their manuscript as soon as possible. The goal of this journal is to have a decision to the author(s) within 6–8 weeks of receipt of manuscript.

8. Upon acceptance of manuscripts, authors will be requested to send the editorial office a disk (electronic) version of the manuscript as well as two revised paper copies. The preferred word processing programs are WordPerfect or Word. The preferred disk is a 3.5-inch disk formatted for DOS or Windows. Please contact the editorial office for exceptions: an author's access to computing equipment will not be a factor in the publication of a manuscript.

9. The final version of the manuscript (both disk and paper copies) should include a short biographical sketch of each author.

10. All authors must sign the "Transfer of Copyright" agreement before the manuscript can be published. (U.S. government officers or employees whose submitted work was prepared as part of their employment are exempt from the transfer requirement, but they must certify their status.) This transfer agreement enables the National Association of Environmental Professionals to protect the copyrighted material for the authors, but authors do not thereby relinquish proprietary rights or

rights to use their work in the future. The copyright transfer covers the exclusive rights to reproduce and distribute the manuscript, including reprints, photographic reproduction, microfilm, electronic versions, and all other reproduction methods, plus translations into languages other than English.

11. The corresponding author will receive page proofs for final proofreading shortly before the article is scheduled for publication. Authors bear full responsibility for accuracy and completeness of their material. Any corrections (not revisions) should be made at this time, and the page proofs must be returned to the publisher within 72 hours of receipt. Extensive revisions are strongly discouraged at this stage of the publication process and, if permitted by the editor and publisher, are likely to result in special charges to the author.

12. It is a condition of publication that manuscripts submitted to this journal have not been published previously, in part or in whole, in a peer-reviewed journal. All prior presentations of the manuscript material must be disclosed to the editor at the time of initial manuscript submission. It is also a condition of publication that the author(s) will not simultaneously submit or publish the material elsewhere.

13. Authors will be sent a reprint order form when they are sent page proofs. If reprints are desired, the completed form along with payment must be returned to the publisher at the same time page proofs are returned.

14. This journal features a full-color illustration on the cover of each issue, the cost of which is borne by the journal. The cover is available to any contributor whose manuscript is accepted for publication, provided the photographic material is original, not previously published, and of high quality. For each submission, two 35mm slides or two 5 x 7 in (13 x 18 cm) or larger prints should be sent to the editorial office after the manuscript has been accepted for publication. The top of the image should be indicated and the submission should include a brief caption and credit on the back of the photo. Note that the submission, whether in slide or print form, should be in sharp focus.

# National Association of Environmental Professionals Membership Form

NAEP Membership includes a subscription to *Environmental Practice*



(Please Print)

Name \_\_\_\_\_  
 Street or P.O. Box \_\_\_\_\_  Home  Business  
 City \_\_\_\_\_ State \_\_\_\_\_ Zip \_\_\_\_\_  
 Company Name/ Agency/College \_\_\_\_\_  
 Title/position \_\_\_\_\_  
 Telephone \_\_\_\_\_ Fax \_\_\_\_\_  
 E-Mail: \_\_\_\_\_

### ANNUAL MEMBERSHIP FEES

General Membership  \$95.00/1 year  \$185.00/2 years  \$270.00/3 years

### EDUCATION

College/University \_\_\_\_\_ Degree \_\_\_\_\_

Specialties \_\_\_\_\_ Years of Experience \_\_\_\_\_

Associate Membership  \$80.00/yr  
 Student Membership  \$40.00/yr (Proof of student status required)  
 Spouse Membership  \$45.00/yr (Environmental Practice not included)  
 Senior Membership  \$55.00/yr

Member # and Spouse name \_\_\_\_\_

### METHOD OF PAYMENT

Membership Dues \$ \_\_\_\_\_ Check/money order for \$ \_\_\_\_\_ payable to NAEP/OUP

Chapter Dues \$ \_\_\_\_\_ Charge \$ \_\_\_\_\_ to my VISA / MasterCard / Amex  
 (circle one)

International Mailing \$ \_\_\_\_\_ (Canada/Mexico add \$15; all others add \$20)

Total Amount Due \$ \_\_\_\_\_

Card Number: \_\_\_\_\_ Exp Date \_\_\_\_\_

Signature \_\_\_\_\_

Payments must be in US dollars/ US banks.

I/we have read, understand and subscribe to the Code of Ethics and Standards of Practice for Environmental Professionals of the National Association of Environmental Professionals.

Signature \_\_\_\_\_

Send payment to: Oxford University Press, 2001 Evans Road, Cary, NC 27513 (Make checks payable to NAEP/OUP)

### NAEP CHAPTERS

In addition to membership in the National Association, NAEP maintains a network of regional, state, local, and student chapters that offer additional opportunities for professional growth. Check below if you would like to join one of the chapters and include applicable dues in addition to the amount for NAEP membership.

#### STATE/LOCAL CHAPTERS

- Alaska \$20
- California \$40
- Chesapeake \$10  
(DE, MD, VA)
- Florida \$20
- Hawaii \$15
- Illinois \$35
- Indiana \$10
- Metro Washington \$25  
zijs 206-208, 220-223
- Michigan \$50
- Mid-America \$15
- New England \$25  
(CT, MA, ME, NH, RI, VT)
- New Jersey \$30
- North Carolina \$25
- Ohio
- PA \$25
- Grtr Philadelphia \$20
- Rocky Mtn. \$20  
(AZ, CO, ID, MT, NV, NM, UT, WY)
- Texas \$40

#### STUDENT CHAPTERS (no fee)

- Auburn University
- Duke University
- George Washington University
- Indiana University
- Kansas State University
- Miami University
- Middle State Tennessee University
- North Carolina State University
- Ohio University
- Rensselaer Polytechnic Institute
- Saint Leo College
- Shawnee State University
- State University of New York
- Texas A&M University-College Station
- Texas A&M University-Kingsville
- University of Akron
- University of Arkansas-Little Rock
- University of Houston-Clear Lake
- University of Maine
- University of Michigan

### MEMBERSHIP CATEGORIES

General Membership is open to individuals who have earned an undergraduate or graduate degree and have at least three years experience working in the environmental field. General members may vote and hold office.

Associate membership is open to individuals who do not meet the requirements for general membership.

Student membership is limited to full-time students pursuing an environmental degree. A copy of a current transcript and college ID is required and must accompany the application.

## Environmental Practice Subscription Form

Yes! I would like to subscribe to *Environmental Practice*:

- Institutions \$125 per year
- Individuals \$80 per year
- Students: \$40\* per year

(\* Note: Students must include copy of current ID)

Please send detailed information on manuscript submission

Enclosed is my check payable to Oxford University Press.

Please charge my  Mastercard  VISA  
 American Express  Diners

Account number \_\_\_\_\_ Exp. Date \_\_\_\_\_ Signature \_\_\_\_\_

Name \_\_\_\_\_

Address \_\_\_\_\_

City/State/Zip \_\_\_\_\_

Country \_\_\_\_\_

Note: Individual rates apply only when issues are shipped to a private address and payment is made with a personal check or credit card. Prices are quoted in US dollars. Subscriptions can be accepted for complete volumes only. All subscriptions in Canada are now subject to 7% GST.

**OXFORD**  
UNIVERSITY PRESS

Orders must be accompanied by the correct payment. The price includes handling and postage by air-speeded delivery. Subscriptions are entered on a per-volume basis only, and dispatch will commence only after receipt of correct payment. Personal subscriptions are available to individuals paying by personal check/credit card and must not be donated to a library. All subscriptions in Canada are subject to a Goods and Services Tax. Please add 7% to the prices quoted. Subscribers in Europe (EC), please either send details of sales tax (VAT) registration/exemption or add local sales tax to the prices quoted. Claims must be notified within four months of dispatch/order date (whichever is later.)

2001 Evans Road, Cary, NC 27513 • 1-800-852-7323 (US and Canada) • Fax: 919-677-1714 • e-mail: jnlorders@oup-usa.org



**National Association of Environmental Professionals**  
**Code of Ethics and Standards of Practice For Environmental Professionals**

The objectives of Environmental Professionals are to conduct their personal and professional lives and activities in an ethical manner. Honesty, justice and courtesy form moral philosophy which, associated with a mutual interest among people, constitute the foundation of ethics. Environmental Professionals should recognize such a standard, not in passive observance, but as a set of dynamic principles guiding their conduct and way of life. It is their duty to practice their profession according to this Code of Ethics.

As the keystone of professional conduct is integrity, Environmental Professionals will discharge their duties with fidelity to the public, their employers, clients, and with fairness and impartiality to all. It is their duty to interest themselves in public welfare, and to be ready to apply their special knowledge for the benefit of mankind and their environment.

#### **Creed**

The objectives of an Environmental Professional are:

1. to recognize and attempt to reconcile societal and individual human needs with responsibility for physical, natural, and cultural systems.
2. to promote and develop policies, plans, activities, and projects that achieve complementary and mutual support between natural and man-made, and present and future components of the physical, natural and cultural environment.

#### **Ethics**

As an Environmental Professional I will:

1. be personally responsible for the validity of all data collected, analyses performed, or plans developed by me or under my direction. I will be responsible and ethical in my professional activities.
2. encourage research, planning, design, management and review of activities in a scientifically and technically objective manner. I will incorporate the best principles of the environmental sciences for the mitigation of environmental harm and enhancement of environmental quality.
3. not condone misrepresentation of work I have performed or that was performed under my direction.
4. examine all of my relationships or actions which could be legitimately interpreted as a conflict of interest by clients, officials, the public or peers. In any instance where I have a financial or personal interest in the activities with which they are directly or indirectly involved, I will make a full disclosure of that interest to my employer, client, or other affected parties.
5. not engage in conduct involving dishonesty, fraud, deceit, or misrepresentation or discrimination.

6. not accept fees wholly or partially contingent on the client's desired result where that desired result conflicts with my professional judgement.

#### **Guidance for Practice as an Environmental Professional**

As an Environmental Professional I will:

1. encourage environmental planning to begin in the earliest stages of project conceptualization.
2. recognize that total environmental management involves the consideration of all environmental factors including: technical, economic, ecological, and sociopolitical and their relationships.
3. incorporate the best principle of design and environmental planning when recommending measures to reduce environmental harm and enhance environmental quality.
4. conduct my analysis, planning, design and review my activities primarily in subject areas for which I am qualified, and shall encourage and recognize the participation of other professionals in subject areas where I am less experienced. I shall utilize and participate in interdisciplinary teams wherever practical to determine impacts, define and evaluate all reasonable alternatives to proposed actions, and assess short-term versus long-term productivity with and without the project or action.
5. seek common, adequate, and sound technical grounds for communication with and respect for the contributions of other professionals in developing and reviewing policies, plans, activities, and projects.
6. determine that the policies, plans, activities or projects in which I am involved are consistent with all governing laws, ordinances, guidelines, plans, and policies, to the best of my knowledge and ability.
7. encourage public participation at the earliest feasible time in an open and productive atmosphere.
8. conduct my professional activities in a manner that ensures consideration of technically and economically feasible alternatives.

#### **Encourage Development of the Profession**

As an Environmental Professional I will:

1. assist in maintaining the integrity and competence of my profession.
2. encourage education and research, and the development of useful technical information relating to the environmental field.
3. be prohibited from lobbying in the name of the National Association of Environmental Professionals.
4. advertise and present my services in a manner that avoids the use of material and methods that may bring discredit to the profession.

#### **Committee Coordinators**

**NAEP has numerous committees and working groups. If you are interested in participating in one please contact the chair.**

**1999 Conference Chair:** Fred Pinkney  
tel: 816-822-3304; email: fpinkne@burnsmcd.com

**Publications:** John R. Daughtery, PhD  
tel: 303-497-6875; email: johnd@mrd3.mmm.ucar.edu

**Certifications, Standards of Practice & Ethics Co-chairs:**  
Tony E. Eggleston, PhD, CEP tel: 919-467-4516;  
email: tony.ellen.homestead@worldnet.att.net

**Co-Chair and Ethics Committee Chair:** Mark Finkelstein  
tel: 919-755-6300; email: 73411.360@compuserve.com

**Membership Co-Chairs:** James Spangler  
tel: 919-828-1903; email: jaspangler@aol.com

**Fellow Membership Coordinator:** Audrey Binder, CEP  
tel: 202-260-3380 email: binder.audrey@epamail.epa.gov

**Chapters:** Bruce Hasbrouck  
tel: 813-287-1960; email: bhasbrou@hdrinc.com

**International:** George H. Wood, CEP  
tel: 919-441-0239; email: epi@interpath.com

**Education/Professional Development:** Cynthia Fridgen  
tel: 517-355-3421; email: fridgenc@pilot.msu.edu

**Academic Centers of Excellence Committee Co-Chairs:** Cynthia Fridgen  
tel: 517-355-3421; email: fridgenc@pilot.msu.edu

**NEPA Working Group:** Lance McCold  
tel: 423-574-5216; email: mccoldln@ornl.gov

**NEPA Presidential Awards:** William J. Melton  
tel: 208-528-2173; email: jim\_melton@cpqm.saic.com

**Corporate Working Group:** Michael N. Zatz  
tel: 202-862-1105; email: mzatz@icfkaiser.com

**Utility Working Group:** Richard Sternberg  
tel: 703-907-5824; email: dick.sternberg@nreca.org

**Internet Working Group:** Geoffrey S. Elliott  
tel: 970-627-5464; email: gelliott@rkymtnhi.com

**Sustainable Development Working Group:** Thomas R. Cuba  
tel: 813-532-0709

**Elections:** Bruce Hasbrouck  
tel: 813-287-1960; email: bhasbrou@hdrinc.com

**1998-1999 Budget:** Bruce Hasbrouck  
tel: 813-287-1960; email: bhasbrou@hdrinc.com

**Policy:** Randall E. Schroeder  
tel: 303-850-0930; email: 70702.2173@compuserve.com



**MONTEVERDE  
Ecology And Conservation of a  
Tropical Cloud Forest**

This definitive guide to one of the most beloved ecotourist destinations in the world assembles a group of prominent researchers who present a broad introduction to the biology of Monteverde. Ecologists, tropical biologists, and natural historians will find this volume indispensable as will anyone who has ever been fascinated by the magnificent wonders of the cloud forest.

August 1999 560 pp.; 125 halftones, 80 line illus.  
0-19-509560-X cloth \$130.00  
0-19-513310-2 paper \$65.00

**BIOLOGY OF BATS**

Gerhard Neuweiler, *University of Munich, Germany*

Translated by Ellen Covey, *University of Washington*

Well adapted to numerous habitats, bats comprise almost one quarter of all species of mammals. In this introduction, Gerhard Neuweiler surveys the most current information available on the physiology, ecology, and phylogeny of bats. And the book features a detailed discussion of echolocation and describes numerous species from around the world.

June 1999 304 pp.; 127 linecuts  
0-19-509950-8 cloth \$69.95  
0-19-509951-6 paper \$35.00

**ENVIRONMENTALISM FOR A  
NEW MILLENNIUM**

**The Challenge of Coevolution**

Leslie Paul Thiele, *University of Florida*  
This book provides a much-needed clarification and expansion of the goals of the environmental movement. Focusing on America, the author traces the long history of the movement and then examines in detail the current trend towards *coevolution*, which emphasizes the interdependence of humans and the environment.

April 1999 336 pp.  
0-19-512410-3 \$35.00

**THE OSTRICH FACTOR  
Our Population Myopia**

Garrett Hardin, Professor Emeritus at *University of California, Santa Barbara*  
"No one feeds the intellectual fires of ecology's role in government better than Hardin. Rich in history, ethics, etymology, Hardin specializes in breaking the manacles of history, phrase and thought that seem to condemn us to the cheapening of people and the impoverishment of habitat through growth in human numbers. Hardin offers an exciting glimpse of ourselves at the moment and shows us all that history need not flow inevitably to chaos."—G.M.  
Woodwell, Director, *Woods Hole Research*

*Center*  
"A learned, witty, and controversial book evaluating contemporary ethical assumptions regarding population planning and world population growth."—*Library Journal*

April 1999 176 pp.; 2 figures  
0-19-512274-7 \$22.00

**BUTTERFLIES THROUGH  
BINOCULARS  
A Field Guide to the Butterflies  
of Eastern North America**

Jeffrey Glassberg, President of the *North American Butterfly Association* and Past President of *Xerces Society*

This magnificent field guide is the latest addition to the exciting series that is revolutionizing the way we look at butterflies. Greatly expanding on *Butterflies Through Binoculars: The Boston-New York-Washington Region*—identified by *Defenders of Wildlife Magazine* as "the first to focus on net-less butterflying" and called "a clear winner" by the *Audubon Naturalist*—Glassberg here shows us how to find, identify, and enjoy all of the butterflies native to the eastern half of the United States and southeastern Canada.

April 1999 400 pp.; 900 color illus, & 23 b/w line illus  
0-19-510668-7 paper \$18.95

**TROPICAL FOREST ECOLOGY  
A View from Barro Colorado  
Island**

Egbert Giles Leigh, Jr. *Smithsonian Tropical Research Institute*

This book considers three essential questions for understanding the ecological organization of tropical forests. How do they stay green with their abundance of herbivores? Why do they have such a diversity of plants and animals? And what role does mutualism play in the ecology of tropical forests? Beautifully written and abundantly illustrated, this book will appeal to a wide variety of scientists.

March 1999 264 pp.; 71 line illus  
0-19-509603-7 paper \$35.00

**THE BIOLOGY OF LAKES AND  
PONDS**

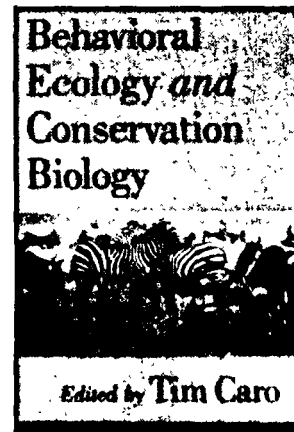
Christopher Bronmark and Lars-Anders Hansson, both at *University of Lund, Sweden*

This comprehensive textbook summarizes new approaches to the understanding of freshwater ecosystems and integrates these with traditional limnology. As well, it includes numerous lab experiments and a survey of lake and pond organisms.

December 1998 320 pp.; 98 illus.  
0-19-854972-5 cloth \$85.00  
0-19-854971-7 paper \$35.00

New from OXFORD

Recent books of interest



**BEHAVIORAL ECOLOGY AND  
CONSERVATION BIOLOGY**

Edited by Tim Caro, *Center for Population Biology*

Here, leading researchers explore conservation intervention programs and show how conservation-minded behavioral ecologists can apply their expertise to some of the most important questions we face today.  
1998 480 pp.; 75 illus.

0-19-510489-7 cloth \$90.00  
0-19-510490-0 paper \$55.00



**A FIELD GUIDE TO THE  
MAMMALS OF CENTRAL  
AMERICA AND SOUTHEAST  
MEXICO**

Written and illustrated by Fiona A. Reid  
This extraordinary book is the first comprehensive field guide to the mammals of Central America and is extensively illustrated throughout, making it enjoyable for amateur naturalists and professionals.  
1998 456 pp.; 62 illus.

0-19-506400-3 cloth \$55.00  
0-19-506401-1 paper \$29.95

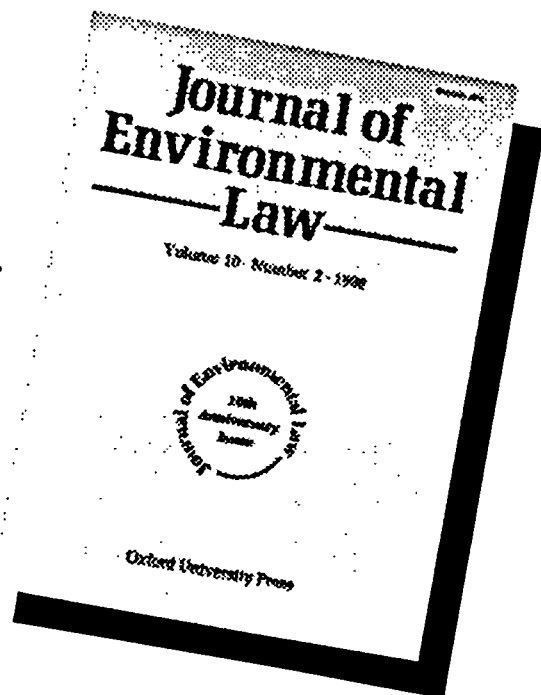
To order, or for more information, please write to:  
OXFORD UNIVERSITY PRESS • 198 Madison Avenue, New York, NY 10016.  
To order any book by credit card, call toll-free 1-800-451-7556.  
Prices and publication dates are subject to change.

[www.oup-usa.org](http://www.oup-usa.org)

ONLINE IN  
1999!

# Journal of Environmental Law

[www.oup.co.uk/envlaw](http://www.oup.co.uk/envlaw)



For over a decade the *Journal of Environmental Law* has encouraged innovative and sustained appraisals of current and emerging concepts, policies, and practice. It has tackled the range of subjects encompassed within environmental law from the more traditional fields of pollution control, waste management, and habitat protection, to the challenging new areas of biotechnology, regulation of hazardous substances, and international regimes for common natural resource.

To make this valuable resource even more useful, the *Journal of Environmental Law* is now fully online. All subscribers have free access to the online edition of the 1999 volume. If you are a personal subscriber, go to [WWW.OUP.CO.UK/ENVLAW](http://WWW.OUP.CO.UK/ENVLAW) and register for online access. Readers using library copies should ensure that the librarian has registered their institution. View the web page for more instructions.

*Journal of Environmental Law*      Volume 11, 1999 (2 issues)

Yes! I would like to subscribe to **JEL** at the rate below.

Institutions: \$145/£80     Individuals: \$82/£46     UKELA/ICCET members: \$61/£34

I am interested in subscribing; please send me a FREE sample copy for review.

Name \_\_\_\_\_

Address \_\_\_\_\_

City \_\_\_\_\_ State \_\_\_\_\_ Zip \_\_\_\_\_

(Please note:  
£Sterling prices  
apply in Europe. US\$  
apply elsewhere.)

Return form to:

OUP, Journals Marketing,  
2001 Evans Road  
Cary, NC 27513

I enclose a check payable to Oxford University Press.      EPFIL99

Please charge my Mcard/Visa/AmEx/Diners/JCB card (circle one) below.

Credit card and sample  
orders can be placed by  
phone/fax/e-mail. Call 800  
852 7323 (USA and Canada  
only) or 919 677 0977. Fax  
919 677 1714 or e-mail  
[jlorders@oup-usa.org](mailto:jlorders@oup-usa.org).

Number: \_\_\_\_\_ Exp. Date: \_\_\_\_\_

Signature: \_\_\_\_\_

**OXFORD**  
UNIVERSITY PRESS

## In the next issue of ENVIRONMENTAL PRACTICE

### ENVIRONMENTAL REVIEW

Ecoregions: A Geographic Framework to Guide Risk Characterization and Ecosystem Management, *S. A. Bryce, J. M. Omernik & D. P. Larsen*

### COMMENTARY

The Savvy Salmon Technocrat: Life's Little Rules, *R. T. Lackey*

### RESEARCH ARTICLE

Survival of Culturable Bacteria during Co-composting of Institutional, Agricultural, and Municipal Solid Wastes, *T. R. Kelley, P. M. Walker & K. D. Smiciklas*

### BOOK REVIEWS

*Ecosystem Health*, D. Rapport, R. Costanza, P. Epstein, C. Gaudet, and R. Levins (eds.), reviewed by *J. A. Griffith*

*The NEPA Planning Process: A Comprehensive Guide with Emphasis on Efficiency*, Charles H. Eccleston, reviewed by *B. D. Williamson*

## Upcoming Special Issues of ENVIRONMENTAL PRACTICE

MARCH 2000

Bioaccumulative and Toxic Chemicals

JUNE 2000

Environmental Decision Making

## Coming in 2000:

The 25th Anniversary

of the

National Association of  
Environmental Professionals



# EVERGREEN

THE EVERGREEN STATE COLLEGE

OLYMPIA, WASHINGTON

## President

The Evergreen State College seeks nominations and applications for the position of president to succeed Dr. Jane L. Jervis, who is retiring after eight years of achievement in leading the college through growth and change. The successful candidate could assume the presidency as early as June 2000.

**College Profile** – Evergreen is a progressive public college of liberal arts and sciences that has established a national reputation for leadership in developing innovative, interdisciplinary, collaborative, and team-taught academic programs. Evergreen places teaching and learning first and is committed to creating an environment in which theory and practice are linked through internships, community-based projects and other activities. It strives to be a community in which diverse students, faculty, and staff develop policy and make decisions collaboratively.

The 28-year-old college is state-funded with an annual operating budget of \$58 million. The main campus is in Olympia, the state capital, between Seattle and Portland at the southern tip of Puget Sound. Enrollment is approximately 3,700 FTE, including more than 200 in three graduate programs. The college has a state-approved plan to grow to just under 5,000 FTE by 2010. Evergreen offers an expanding part-time studies program, upper-division programs at the Evergreen-Tacoma campus, and tribal community-based programs throughout the Olympic Peninsula. It also houses six public service centers.

Committed to equal opportunity, Evergreen is working to build a diverse staff, faculty, and student body. For more information about Evergreen, please refer to our web site at [www.evergreen.edu](http://www.evergreen.edu).

**Who Should Apply** – We encourage applications from qualified people who have demonstrated the following: Ability to lead with consistency, honesty, and accountability; commitment to innovation in higher education; a distinguished record of scholarly, artistic, or professional achievement; commitment to equal opportunity and access in higher education; ability to work within and promote a multicultural and multi-ethnic community and curriculum; and a successful record in managing programs, budgets and finances. A doctorate is strongly preferred.

**Application Procedure** – Address nominations, inquiries, and requests for application packets to:

Presidential Search Committee  
The Evergreen State College  
Library 3103  
Olympia, WA 98505

Telephone: (360) 866-6000, ext. 6113  
E-mail: [husseman@evergreen.edu](mailto:husseman@evergreen.edu)

Review of applicant files will begin in mid-October; finalist interviews are tentatively scheduled for late January. Confidentiality will be strictly maintained until the final stages of the process.





# NATIONAL ASSOCIATION OF ENVIRONMENTAL PROFESSIONALS BOARD OF DIRECTORS

Committed to achieving the highest standards of ethics and competence within the environmental profession

## PRESIDENT

Andrew J. McCusker  
MACKWORTH Environmental  
3 Adams St  
South Portland, ME 04106  
tel: 207-767-0161  
tel: 207-846-4152 (home)  
fax: 207-767-4306  
email: ajmccusker@aol.com

## PRESIDENT ELECT

Bruce Hasbrouck  
HDR Engineering Inc  
5100 W Kennedy Blvd, #300  
Tampa, FL 33609-1840  
tel: 813-287-1960 Home: 727-522-5344  
fax: 813-282-2430  
email: bhasbrou@hdrinc.com  
(Expires 2000)

## TREASURER

Craig Stanley  
CS Limited  
434 Big Sky Dr  
Etters, PA 17319  
tel: 717-932-2003  
fax: 717-932-4409  
email: cwstanley@worldnet.att.net  
(Expires 2001)

## SECRETARY

Helene K. Merkel  
Horne Engineering Services Inc  
2750 Prosperity Ave., Suite 450  
Fairfax, VA 22031  
tel: 703/641-1100  
fax: 703/641-0440  
email: hmerkel@horne.com  
Other: Permanent Conference Committee chair  
(Expires 1999)

## IMMEDIATE PAST PRESIDENT

James A. Roberts, PhD, CEP  
Geographer and Natural Resource Planner  
540 Morris Way  
Sacramento, CA 95864  
tel: 916/483-1564  
fax: 916/484-7124  
email: gems@ns.net  
Other: Chair International Committee

## BOARD MEMBERS

John R. Daugherty, PhD  
NOAA/NSSL  
3450 Mitchell Lane, FL3, Room 2037  
Boulder, CO 80301-2260  
tel: 303/497-6875  
fax: 303/497-6930  
email: johnd@ucar.edu  
(Expires 2000)

Kara Downey, QEP  
Arizona Elec. Power Cooperative  
P.O. Box 670  
Benson, AZ 85602  
tel: 520-586-5158  
fax: 520-586-5566  
email: kdowney@aepnet.org  
(Expires 1999)

Cynthia Fridgen, PhD  
Michigan State University  
Resource Dev Dept,  
308 Natural Resources Bldg  
East Lansing, MI 48824-1222  
tel: 517-355-3421  
fax: 517-353-8994  
email: fridgenc@pilot.msu.edu  
(Expires 2001)

Michael Herbaugh  
99 MacGregor Ridge Rd  
Stafford, VA 22554  
tel: 703-604-9294  
fax: 703-604-9204  
email: raisinb@fls.infi.net  
(Expires 2001)

Jim Melton  
SAIC Idaho Falls Office  
545 Shoup Ave  
Idaho Falls, ID 83401  
tel: 208-528-2173  
fax: 208-535-7520  
email: jim\_melton@cpqm.saic.com  
Other: Committee: Utility Working Group,  
NEPA Awards committee  
(Expires 2000)

Dennis R. Poulsen, CEP  
CA Steel Industries, Inc.  
14000 San Bernardino Avenue  
P.O. Box 5080  
Fontana, CA 92335  
tel: 909/350-5973  
fax: 909/350-6162  
email: dpoulsen@californiasteel.com  
(Expires 1999)

John Schultheis, CEP  
Nimmo & Company  
P. O. Box 536  
Swannanoa, NC 28778-0536  
tel: 828-686-4336  
fax: 828-686-4630  
email: nimmo@ioa.com  
(Expires 2001)

James A. Spangler  
Barrett Kays and Associates  
224 Fayetteville St. Mall, Suite 100  
P.O. Box 2979  
Raleigh, NC 27602-2979  
tel: 919/828-1903  
fax: 919/828-0365  
email: jaspangler@aol.com  
(Expires 2001)

George Wood  
Environmental Professionals, Inc.  
P.O. Box 3368  
Kill Devil Hills, NC 27948  
tel: 252/441-0239  
fax: 252/441-0721  
email: epi@interpath.com  
Other: Committee: International; Bus Plan  
Comm; NEPA/ISO/SD Ad hoc Committee,  
(Expires 1999)

EX-OFFICIO  
Robert A. Michaels, PhD, CEP  
RAM TRAC Corporation  
3100 Rosendale Road  
Schenectady, NY 12309-1510  
tel: 518/785-0976  
fax: 518/785-0976  
email: 76517.747@compuserve.com

EX-OFFICIO  
John H. Perkins, PhD  
Editor-in-Chief, *Environmental Practice*  
The Evergreen State College  
Olympia, WA 98505  
tel: 360/866-6000 x6503  
fax: 360/866-6794  
email: perkinsj@elwha.evergreen.edu

## NATIONAL OFFICE

Donna Carter  
6524 Ramoth Dr  
Jacksonville, FL 32226-3202  
tel: 904-251-9900 or 888-251-9902  
fax: 904-251-9901  
email: naep@ilnk.com

## CHAPTER REPRESENTATIVES

### Alaska

Carl H. Harmon  
Chugach Electric Associates, Inc.  
P.O. Box 196300  
Anchorage, AK 99519-6300  
tel: 907/563-7494  
fax: 907/562-0027

### California Co-Chairs

Karen Frye  
Tetra Tech  
180 Howard Street Ste 250  
San Francisco, CA 94105  
tel: 415-974-1221  
fax: 415-974-5914  
email: karen.frye@tetratech.com

### David Full

ESA  
225 Bush St, #1700  
San Francisco, CA 94104  
tel: 415-896-5900  
fax: 415-896-0332  
email: dfull@esassoc.com

### Chesapeake

Norman W. Arnold, CEP, NAEP  
Fellow  
988 Saigon Road  
McLean, VA 22102-2119  
tel: 703/827-8368  
fax: 703/506-8509  
email: normarnold@aol.com

### Florida

Debby Valin  
FI DEP  
13 E Melbourne Ave  
Melbourne, FL 32901  
tel: 407-984-4800  
fax: 407-984-4816  
email: valin\_d@orl1.dep.state.fl.us

### Hawaii

Margo S. Stahl, CEP  
U.S. Fish & Wildlife Service, #6307  
P.O. Box 50167, 300 Alamoana Blvd  
Honolulu, HI 96850  
tel: 808/541-2749  
fax: 808/541-3470  
email: margo\_stahl@mail.fws.gov

### Illinois

Greg Gocek  
Enviro Capital  
5514 Glenview Rd  
Downers Grove, IL 60515-4422  
tel: 630-968-7845  
fax: 630-968-0441  
email: gggman@worldnet.att.net

### Indiana

Clarence Dillon  
5719 S Roger  
Bloomington, IN 47403-4637  
tel: 812-824-6911  
email: cedillon@kiva.net

### Metro Washington, D.C.

Catharine Swan  
3503 S Stafford St  
Arlington, VA 22206  
tel: 703-671-1232  
fax: 703-883-2735  
email: swans@erols.com

### Michigan

Robert Anderson, PG  
CTI & Associates  
12482 Emerson Dr  
Brighton, MI 48116  
tel: 248-486-5100  
fax: 248-486-5050  
email: ctia@mi.verio.com

### Mid-America

Fred Pinkney, PhD  
Burns & McDonnell  
9400 Ward Parkway  
Kansas City, MO 64114  
tel: 816/822-3304  
fax: 816/333-3690  
email: fpinkne@burnsmcd.com  
Other: President: Mid-America Chapter  
Co-chair NAEP Chapters Committee  
Chair 1999 Conference Committee

### New England

Andrew J. McCusker  
MACKWORTH Environmental  
3 Adams St  
South Portland, ME 04106  
tel: 207-767-0161  
tel: 207-846-4152 (home)  
fax: 207-767-4306  
email: ajmccusker@aol.com

### New Jersey

Thomas K. Uzzo  
Whitestone Env. Conf. Mgmt.  
776 Mountain Blvd  
Watchung, NJ 07061  
tel: 908/668-7777  
fax: 908/754-5936  
email: mdlondon@aol.com

### North Carolina

David A. Griffin, CEP  
URS Greiner Woodward Clyde  
3109 Poplarwood Ct, Suite 301  
Raleigh, NC 27604  
tel: 919/850-9511  
fax: 919/876-5479  
email: david\_griffin@urscorp.com

### Pennsylvania

Karyn Vandervoort  
McCormick, Taylor & Assoc Inc  
6380 Flank Dr, #300  
Harrisburg, PA 17112  
tel: 717-540-6040  
fax: 717-540-6049  
email: mta@paonline.com

### Philadelphia Region

Alan Kaufman  
45 Meadows Lane  
Haverford, PA 19041  
tel: 610-527-8634  
fax: 610-876-7847  
email: kaufal@aol.com

### Rocky Mountain

Carl Eriksson  
Realistic Environmental Solutions  
48 Blue Bel Dr  
Evergreen, CO 80439  
tel: 303-679-1230  
fax: 303-679-0564  
email: cleriks0@sprynet.com

### Texas

Carl E. Masterson  
Houston-Galveston Area Council  
P.O. Box 22777  
Houston, TX 77227  
tel: 713/993-4561  
fax: 713/993-4503

## INCLUDED IN THIS ISSUE:

---

### POINTS OF VIEW

*B. Morse* GUEST EDITORIAL: Weapons-Grade Plutonium Disposition: Moving Beyond the Cold War

### NEWS & INFORMATION

*J. M. Belcher* Natural Resources and Population Growth in Washington State  
*B. Sengupta* Ground Water Quality and Pollution Status in National Capital Territory, Delhi  
*T. Rogova &  
T. B. Rainey* The Volga-Kama Nature Preserve (Zapovednik) Needs Help  
*L. Moon Stumpff* The Essence of the Wild: Native American Perspectives and Practices  
*R. Rogers* Natural History: Streaked Horned Lark and Land Management  
*G. F. Kelman* NAEP Committee and Working Group News  
*B. Hasbrouck* NAEP Chapter News

### FEATURES & REVIEWS

*C. H. Eccleston* COMMENTARY: Determining If and When Impacts of Potential Accidents Need to be Evaluated in a NEPA Analysis  
*J. H. Tietjen,  
R. Khanbilvardi,  
Y. Gopchenko,  
& P. Kulakova* RESEARCH ARTICLE: Biological Water Quality Assessment of Macroinvertebrates Inhabiting Small Streams in the Sasyk Reservoir Region of Ukraine  
*G. J. Pesacreta* RESEARCH ARTICLE: Alligatorweed (*Alternanthera philoxeroides*) Control by Surface Covers and Benthic Barriers

---

## Environmental Practice

---

Oxford University Press  
2001 Evans Road  
Cary, North Carolina 27513

---

Bulk Rate U.S. Postage PAID Permit 116 Lawrence, KS
---

Address Service Requested