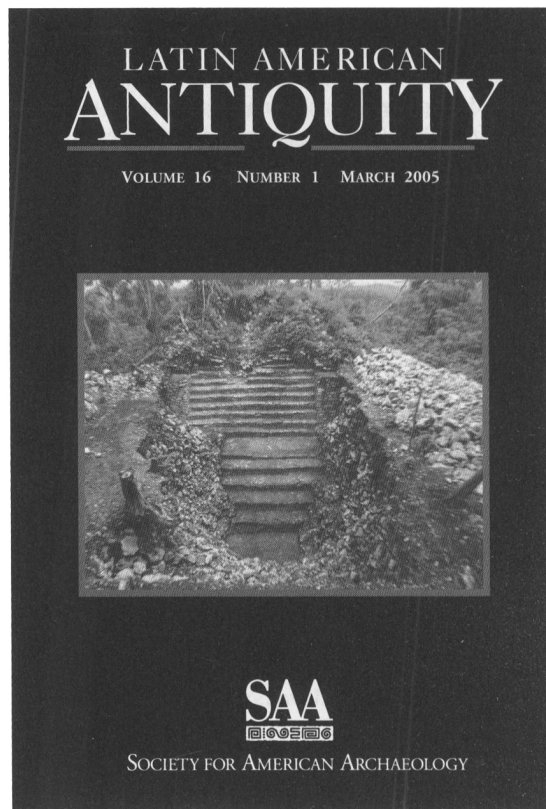


ARTICLES

- 3 *Huayrachinas and Tocoimbos:*
Traditional Smelting Technology of the Southern
Andes
Mary Van Buren and Barbara H. Mills
- 26 The Rise and Fall of an Ancient Maya Petty Royal
Court
Gyles Iannone
- 45 Distant Colonies and Explosive Collapse:
The Two Stages of the Tiwanaku Diaspora in the
Osmore Drainage
Bruce D. Owen

REPORTS

- 81 Agricultural Rhythms and Rituals:
Ancient Maya Solar Observation in Hinterland Blue
Creek, Northwestern Belize
Gregory Zaro and Jon C. Lohse
- 99 How Can Spin, Ply, and Knot Direction Contribute
to Understanding the Quipu Code?
Marcia Ascher



NOTICE TO AUTHORS

American Antiquity publishes original papers on the archaeology of the New World and on archaeological method, theory, and practice worldwide. Authors of papers on Latin American topics are encouraged to submit their work to *Latin American Antiquity*. Papers on Latin American archaeology addressing broad methodological, theoretical, or comparative issues may be accepted by either journal after consultation with the editors. Authors submit manuscripts to the editor for consideration as ARTICLES, REPORTS, COMMENTS, or FORUM essays. REVIEWS and BOOK NOTES are solicited by the respective associate editor. OBITUARIES should be submitted to the editor, *The SAA Archaeological Record*, for publication (see *SAA Bulletin* March/April 1996, p. 7, for further details).

Authors should submit an original and four copies of their manuscripts, including all figures, tables, references, and notes. Detailed information on policy, style, and technical matters of manuscript preparation is given in the "Editorial Policy, Information for Authors, and Style Guide for *American Antiquity* and *Latin American Antiquity*," which appeared in the October 1992 issue (57:749-770) and can be read on the World Wide Web at <http://www.saa.org/Publications/StyleGuide/styframe.html>.

The editor reserves the right to evaluate manuscripts (with or without peer review) for appropriate subject matter, quality, length, and compliance with the style guide. Manuscripts may be returned to authors if they fail to meet expectations or conform to these guidelines. Manuscripts are evaluated by the editor in consultation with peer referees, as appropriate. The editor has the final responsibility for all decisions regarding manuscripts. The review process generally takes a minimum of two to four months. Authors will be notified as soon as a decision is reached to accept (outright or with revisions) or reject a manuscript.

To ensure the prompt receipt and handling of manuscripts, please send them to the editor: Michael Jochim, 57 Mesa Rd., Department of Anthropology, University of California-Santa Barbara, Santa Barbara, CA 93106-7000.

ARTICLES

- 211 Effigy Pipes, Diplomacy, and Myth: Exploring Interaction between St. Lawrence Iroquoians and Eastern Iroquois in New York State
Anthony Wonderley
- 241 Bone Chemistry, Body Parts, and Growth Marks: Evaluating Ohio Hopewell and Cahokia Mississippian Seasonality, Subsistence, Ritual, and Feasting
Richard W. Yerkes
- 267 Climate Change and Culture Change on the Southern Coast of British Columbia 2400–1200 cal. B.P.: An Hypothesis
Dana Lepofsky, Ken Lertzman, Douglas Hallett, and Rolf Mathewes
- 295 Ceramic Specialization and Agricultural Marginality: Do Ethnographic Models Explain the Development of Specialized Pottery Production in the Prehistoric American Southwest?
Karen G. Harry
- 321 A Case of Historic Cannibalism in the American West: Implications for Southwestern Archaeology
Alison E. Rautman and Todd W. Fenton

REPORTS

- 342 The Watercraft of Isla Cedros, Baja California: Variability and Capabilities of Indigenous Seafaring Technology Along the Pacific Coast of North America
Matthew R. Des Lauriers
- 361 Morphological Observations on Recently Recovered Early Agricultural Period Maize Cob Fragments from Southern Arizona
Michael W. Diehl

REVIEWS

Book Review Essays

- 376 Modern Approaches to Paleolithic Archaeology in Europe—A Sampler of Research Traditions
G. A. Clark
- Bettencourt-Saint-Ouen (Somme): Cinq occupations paléolithiques au début de la dernière glaciation, edited by Jean-Luc Locht
 - Campements mésolithiques en Bresse jurassienne – Choisey et Ruffey-sur-Seille (Jura), edited by Frédéric Séara, Sylvain Rotillon, and Christophe Cupillard
 - Recent Studies in the Final Palaeolithic of the European Plain, edited by Berit Valentin Eriksen and Bodil Bratlund
 - Rekem—a Federmesser Camp on the Meuse River Bank, Vols. I, II, by Marc De Bie and Jean-Paul Caspar
- 384 Lascaux, Le Geste, L'Espace, et Le Temps, by Norbert Aujoulat; and Chauvet Cave: The Art of Earliest Times, edited by Jean Clottes
Brian Hayden and Suzanne Villeneuve
- 389 The Recovery of Meaning: Historical Archaeology in the Eastern United States, edited by Mark P. Leone and Parker B. Potter, Jr; A Marxist Archaeology, by Randall H. McGuire; Behavioral Archaeology, by Michael Brian Schiffer; and Method and Theory in Historical Archaeology, by Stanley South
Justin Jennings

On the Cover: "Boat" pipes: (a) from Pompey, Onondaga County (#A-31855); (b) from the Whitney site, Jefferson County (#A-27727); (c) from Jefferson County (#A-19985). All pipes courtesy of the New York State Museum, Albany; used with permission (from "Effigy Pipes, Diplomacy, and Myth: Exploring Interaction between St. Lawrence Iroquoians and Eastern Iroquois in New York State" by Anthony Wonderley, page 230).

∞ The paper used in this publication meets the requirements of ANSI/NISO Z39.48-1992
(Permanence of Paper).