

New Titles in Epidemiology from Cambridge!

Statistical Learning for Biomedical Data

James D. Malley, Karen G. Malley, Sinisa Pajevic

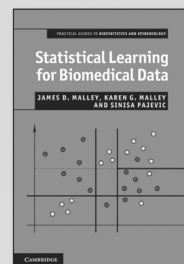
Practical Guides to Biostatistics and Epidemiology

CONTENTS:

Preface; Acknowledgements; Part I. Introduction: 1. Prologue; 2. The landscape of learning machines; 3. A mangle of machines; 4. Three examples and several machines; Part II. A Machine Toolkit: 5. Logistic regression; 6. A single decision tree; 7. Random forests – trees everywhere; Part III. Analysis Fundamentals: 8. Merely two variables; 9. More than two variables; 10. Resampling methods; 11. Error analysis and model validation; Part IV. Machine Strategies: 12. Ensemble methods – let's take a vote; 13. Summary and conclusions; References; Index.

\$105.00: Hardback: 978-0-521-87580-6: 312 pp.

\$48.00: Paperback: 978-0-521-69909-9



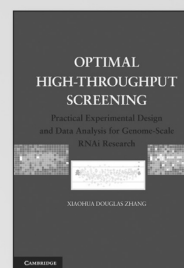
Optimal High-Throughput Screening

Practical Experimental Design and Data Analysis for Genome-Scale RNAi Research

Xiaohua Douglas Zhang

\$99.00: Hardback: 978-0-521-51771-3: 224 pp.

\$39.99: Paperback: 978-0-521-73444-8



Phylogenetic Networks

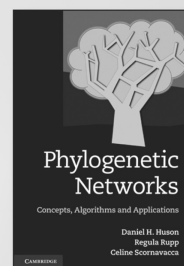
Concepts, Algorithms and Applications

Daniel H. Huson, Regula Rupp, Celine Scornavacca

“This wonderfully accessible book is by far the most thorough and up-to-date treatment of phylogenetic networks about. Many evolutionary processes in nature do not conform to the simple model of phylogenetic trees; examples are hybridizations, symbioses, and lateral gene transfer. The more we probe nature with genomics, the more significant and numerous these examples become, so there is a real need for using networks in phylogenetics. This volume is a must for researchers working with phylogenetic networks. It is for an advanced college audience. Beautifully organized and clearly written, it really fills a void.”

–*Bill Martin, University of Duesseldorf*

\$57.00: Hardback: 978-0-521-75596-2: 374 pp.



Applied Linear Models with SAS

Daniel Zelterman

\$65.00: Hardback: 978-0-521-76159-8: 288 pp.



Prices subject to change.

CAMBRIDGE

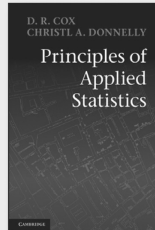
New Titles in Epidemiology from Cambridge!

Principles of Applied Statistics

D. R. COX
and CHRISTL A. DONNELLY

Contents: Preface; 1. Some general concepts; 2. Design of studies; 3. Special types of study; 4. Principles of measurement; 5. Preliminary analysis; 6. Model formulation; 7. Model choice; 8. Techniques of formal inference; 9. Interpretation; 10. Epilogue; References; Index.

\$95.00: Hb: 978-1-107-01359-9: 216 pp.
\$39.99: Pb: 978-1-107-64445-8

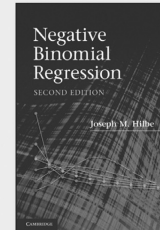


SECOND EDITION

Negative Binomial Regression

JOSEPH M. HILBE

\$85.00: Hb: 978-0-521-19815-8:
572 pp.

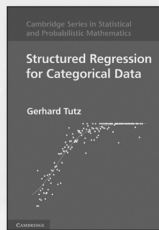


Structured Regression for Categorical Data

GERHARD TUTZ
Cambridge Series in Statistical and Probabilistic Mathematics

The book treats many recent developments in flexible and high-dimensional regression not normally included in books on categorical data analysis.

\$90.00: Hb: 978-1-107-00965-3: 512 pp.



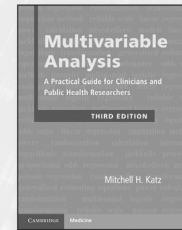
THIRD EDITION

Multivariable Analysis

A Practical Guide for Clinicians and Public Health Researchers

MITCHELL H. KATZ

\$105.00: Hb: 978-0-521-76098-0
\$60.00: Pb: 978-0-521-14107-9:
250 pp.



Measurement in Medicine

A Practical Guide

HENRICA C. W. DE VET,
CAROLINE B. TERWEE,
LIDWINE B. MOKKINK,
and DIRK L. KNOL

Practical Guides to Biostatistics and Epidemiology

Contents: 1. Introduction; 2. Concepts, theories and models, and types of measurements; 3. The development of a measurement instrument; 4. Field testing – item reduction and data structure; 5. Reliability; 6. Validity; 7. Responsiveness; 8. Interpretation; 9. Systematic reviews of measurement properties; Index.

\$99.00: Hb: 978-0-521-11820-0: 360 pp.
\$45.00: Pb: 978-0-521-13385-2



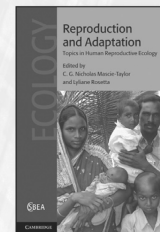
Reproduction and Adaptation

Topics in Human Reproductive Ecology

Edited by C. G. NICHOLAS
MASCIE-TAYLOR
and LYLIANE ROSETTA

Cambridge Studies in Biological and Evolutionary Anthropology

\$99.00: Hb: 978-0-521-50963-3:
292 pp.



Translational Medicine and Drug Discovery

Edited by
BRUCE H. LITTMAN
and RAJESH KRISHNA

\$120.00: Hb: 978-0-521-88645-1:
384 pp.



Prices subject to change.

www.cambridge.org/us/statistics
800.872.7423



CAMBRIDGE
UNIVERSITY PRESS

CAMBRIDGE

JOURNALS

Parasitology

Editor-in-Chief

R. S. Phillips, University of Glasgow, UK

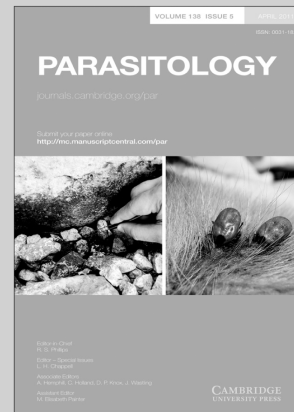
Parasitology is an important specialist journal covering the latest advances in the subject. It publishes original research and review papers on all aspects of parasitology and host-parasite relationships, including the latest discoveries in parasite biochemistry, molecular biology and genetics, ecology and epidemiology in the context of the biological, medical and veterinary sciences. Included in the subscription price are two special issues which contain reviews of current hot topics in parasitology, one of which is the proceedings of the annual Symposium of the British Society for Parasitology, while the second, covering areas of significant topical interest, is commissioned by the editors and the editorial board.

Price information

is available at: <http://journals.cambridge.org/par>

Free email alerts

Keep up-to-date with new material – sign up at
<http://journals.cambridge.org/par-alerts>



Parasitology

is available online at:
<http://journals.cambridge.org/par>

To subscribe contact Customer Services

in Cambridge:

Phone +44 (0)1223 326070
Fax +44 (0)1223 325150
Email journals@cambridge.org

in New York:

Phone +1 (845) 353 7500
Fax +1 (845) 353 4141
Email
subscriptions_newyork@cambridge.org

For free online content visit:
<http://journals.cambridge.org/par>



CAMBRIDGE
UNIVERSITY PRESS

Go Mobile

CJO Mobile (CJOm) is a streamlined
Cambridge Journals Online (CJO)
for smartphones and other
small mobile devices



- Use CJOm to access all journal content including *FirstView* articles which are published online ahead of print
- Access quickly and easily thanks to simplified design and low resolution images
- Register for content alerts or save searches and articles – they will be available on both CJO and CJOm
- Your device will be detected and automatically directed to CJOm via: journals.cambridge.org



CAMBRIDGE
UNIVERSITY PRESS

EPIDEMIOLOGY & INFECTION

CONTENTS

REVIEW ARTICLE

- Evolution of HCV incidence in drug users in France**
D. Lucidarme, C. Duburque, P. Bulois & B. Filoche 1287

ORIGINAL PAPERS

Community-acquired pneumonia and bacteraemia

- Classification algorithms to improve the accuracy of identifying patients hospitalized with community-acquired pneumonia using administrative data**
O. Yu, J. C. Nelson, L. Bounds & L. A. Jackson 1296

- Outcomes of hospitalized patients with bacteraemic and non-bacteraemic community-acquired pneumonia caused by *Streptococcus pneumoniae***
S.-H. Lin, C.-C. Lai, C.-K. Tan, W.-H. Liao & P.-R. Hsueh 1307

- Pneumonia and influenza hospitalization in HIV-positive seniors**
S. M. Mor, J. A. Aminawung, A. Demaria Jr. & E. N. Naumova 1317

Antibiotics and antibiotic resistance: veterinary and human

- Perioperative antibiotic prophylaxis: improved compliance and impact on infection rates**
E. Prospero, P. Barbadoro, A. Marigliano, E. Martini & M. M. D'Errico 1326

- Antibiotic therapy for acute Q fever in The Netherlands in 2007 and 2008 and its relation to hospitalization**
F. Dijkstra, J. Riphagen-Dalhuisen, N. Wijers, E. Hak, M. A. B. van der Sande, G. Morroy, P. M. Schneeberger, B. Schimmer, D. W. Notermans & W. van der Hoek 1332

- Observational study of the epidemiology and outcomes of vancomycin-resistant *Enterococcus* bacteraemia treated with newer antimicrobial agents**
J. A. McKinnell, M. Patel, R. M. Shirley, D. F. Kunz, S. A. Moser & J. W. Baddley 1342

- Probabilistic network modelling of the impact of penicillin consumption on spread of pneumococci**
D. Karlsson 1351

Gastroenteritis

- Seroepidemiological studies indicate frequent and repeated exposure to *Campylobacter* spp. during childhood**
C. W. Ang, P. F. M. Teunis, P. Herbrink, J. Keijsers, Y. H. T. P. van Duynhoven, C. E. Visser & W. van Pelt 1361

- Weather variability and paediatric infectious gastroenteritis**
D. Onozuka & M. Hashizume 1369

- Assessment of the underestimation of childhood diarrhoeal disease burden in Israel**
T. Ziv, A. D. Heymann, J. Azuri, M. Leshno & D. Cohen 1379

- Syndromic surveillance of acute gastroenteritis based on drug consumption**
F. Bounoure, P. Beaudeau, D. Mouly, M. Skiba & M. Lahiani-Skiba 1388

Midge-transmitted bluetongue

- Short Report: Midge-transmitted bluetongue in domestic dogs**
C. A. L. Oura & M. El Harrak 1396

Sexually transmitted infections

- Prevalence, incidence, and persistence of syphilis infection in female sex workers in a Chinese province**
H. B. Wang, K. Smith, K. S. Brown, G. X. Wang, D. F. Chang, J. J. Xu, G. W. Ding, X. Jin, K. H. Reilly & N. Wang 1401

Emerging diseases

- Short Report: Chikungunya epidemic-related mortality**
S. P. Manimunda, D. Mavalankar, T. Bandyopadhyay & A. P. Sugunan 1410

- Short Report: Prevalence of *Coxiella burnetii* (Q fever) antibodies in bovine serum and bulk-milk samples**
E. D. Ryan, M. Kirby, D. M. Collins, R. Sayers, J. F. Mee & T. Clegg 1413

Influenza

- Estimating time to onset of swine influenza symptoms after initial novel A(H1N1v) viral infection**
B. D. M. Tom, A. J. van Hoek, R. Pebody, J. McMenamin, C. Robertson, M. Catchpole & D. de Angelis 1418

- Host and environmental factors reducing mortality during the 1918–1919 influenza pandemic**
S. Paynter, R. S. Ware & G. D. Shanks 1425

- Excess mortality monitoring in England and Wales during the influenza A(H1N1) 2009 pandemic**
P. Hardelid, N. Andrews & R. Pebody 1431

- Correspondence: Note on 'Age, influenza pandemics and disease dynamics' by Greer *et al.* (2010)**
Guy Katriel 1440

- Corrigendum** 1443