



## TIKAL

### NEW PUBLICATIONS

Any contemporary consideration of ancient Mesoamerica and more particularly the lowland Maya must include the great site of Tikal, scene of intense, continuous study by The University Museum from 1956 to 1969. The painstaking analysis of the work of those years continues, the results to be published in a projected total of thirty-nine reports. Offered here are the two most recent of these reports.

#### TIKAL REPORTS NO. 33 THE MONUMENTS AND INSCRIPTIONS OF TIKAL

##### Part A: The Carved Monuments

Christopher Jones and Linton Satterthwaite

The first of a multi-part study, this volume treats the entire body of Tikal sculptured wood and stone monuments. All stelae, altars, column altars, lintels, and a major collection of fragments from the site of Tikal and nearby El Encanto, Uolantun, Ixlu and Jimbal are listed with location, description and condition, and with references to the appropriate Tikal Reports for excavation information and overall context. Where inscriptions are present, their chronological position and historical content are examined; the analyses are given further dimension through the use, where appropriate, of the assessments and conclusions of other students. The text concludes with a diachronic review of this extraordinary material, thus presenting a panorama of Tikal rulership over the centuries. Every carved surface is illustrated by a set-scale standardized drawing, supplemented in most cases by at least one photograph.

University Museum Monograph 44, 1982. Ca. 364 pp., 112 illus. Hardbound, \$55.00

#### Remittance must accompany orders from individuals.

We pay postage and handling on pre-paid orders.

Make checks, drawn on U.S. banks, payable to **The University Museum**

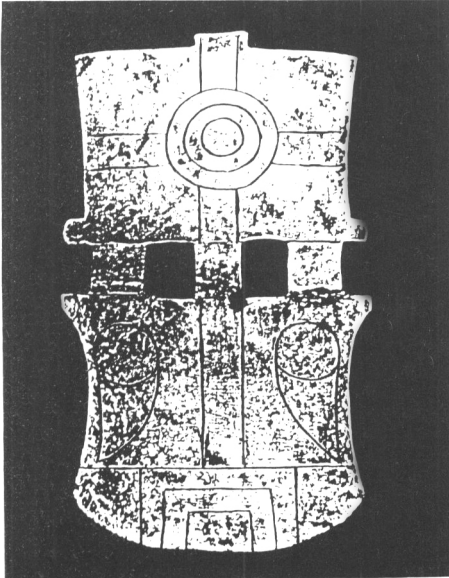
Send to: Department T, Publications Division, The University Museum, 33rd and Spruce Streets, Philadelphia, PA 19104.

#### TIKAL REPORTS NO. 12 INTRODUCTION TO THE ARCHAEOLOGY OF TIKAL, GUATEMALA

William R. Coe and William A. Haviland

Of interest for field archaeologists and historians of the discipline, this volume offers a full review of the work of the Tikal Project. Topics include initial motivations and theoretical concerns, and the later development of contrasting programs; procedures and standards used in excavation and field laboratory; a complete inventory of all excavations undertaken, keyed to Tikal maps and cross-referenced to specific Tikal Reports in preparation; a full interim Project bibliography; and a listing of projected reports in this series (many well advanced in preparation). The volume includes a discussion of the problems and techniques of funding and staffing such a wide-ranging expedition, the difficulties of preparing and publishing the entire Tikal record—one perhaps unprecedented in size—and a candid scrutiny of the way in which these obstacles have been met.

University Museum Monograph 46, 1982. xii + 100 pp., 25 illus., bibliography. Hardbound, \$20.00



# OF SKY AND EARTH

Art of the Early Southeastern Indians

ROY S. DICKENS, EDITOR

Distributed for the Georgia Department of Archives and History

This exhibition catalog from the High Museum of Art, Atlanta, describes 161 objects and illustrates 89 of them, 12 in color. Included are three essays on early Southeastern Indian culture.

96 pages. \$9.95 paper

THE UNIVERSITY OF TENNESSEE PRESS  
Knoxville 37996-0325



# New titles in Archaeology

*A New Serial Publication . . .*

## **ADVANCES IN WORLD ARCHAEOLOGY**

Edited by FRED WENDORF  
and ANGELA E. CLOSE

**Volume 1, 1982**

Meets the need for a single and reliable source for regional archaeological syntheses. The seven chapters in Volume 1 deal with Tasmania, Polynesia, Korea, Japan, India, Russia, and Northwestern Europe. As subsequent annual volumes are added, articles that concern all time periods and geographic regions will be presented.

**1982, 352 pp., \$37.50**

**ISBN: 0-12-039901-6**

**Volume 2: 1983, in preparation**

## **ADVANCES IN ARCHAEOLOGICAL METHOD AND THEORY**

Edited by MICHAEL B. SCHIFFER

**Volume 6, 1983**

**CONTENTS:** *David J. Meltzer*, The Antiquity of Man and the Development of American Archaeology. *Dave D. Davis*, Investigating the Diffusion of Stylistic Innovations. *Randall H. McGuire*, Breaking Down Cultural Complexity: Inequality and Heterogeneity. *Frederick M. Wiseman*, Subsistence and Complex Societies: The Case of the Maya. *Vaughn M. Bryant, Jr.*, and *Richard G. Holloway*, The Role of Palynology in Archaeology. *Irwin Rovner*, Plant Opal Phytolith Analysis: Major Advances in Archaeobotanical Research. *Robert C. Dunnell and William S. Dancey*, The Siteless Survey: A Regional Scale Data Collection Strategy. *Jack D. Nance*, Regional Sampling in Archaeological Survey: The Statistical Perspective.

**1983, c. 364 pp., \$37.50**

**ISBN: 0-12-003106-x**

## **ADVANCES IN ARCHAEOLOGICAL METHOD AND THEORY**

**Selections for Students from  
Volumes 1 through 4**

Edited by MICHAEL B. SCHIFFER

Contains thirteen papers chosen for their generality and potential for inspiring spirited debates. In a convenient paperback format, this volume will encourage students to develop a more powerful and refined appreciation of archaeological method and theory.

**1983, c. 712 pp., \$19.95**

**ISBN: 0-12-624180-7 (t) (paperback\*)**

\*To obtain examination copies, write to the Sales Department, giving the title and enrollment of the course for which the book will be considered.

## **INDIANS OF THE UPPER TEXAS COAST**

LAWRENCE E. ATEN

*A Volume in the NEW WORLD  
ARCHAEOLOGICAL RECORD Series*

Presents the first detailed synthesis of the cultural history of the Indians who inhabited the upper Texas coast from about 12,000 years ago to the mid-nineteenth century. The book integrates data from history, geology, and archaeology to provide a holistic framework for interpreting the processes of cultural prehistory and history on the western Gulf frontier of the southeastern United States.

**1983, c. 366 pp., \$39.50**

**ISBN: 0-12-065740-6**

Continuation Orders authorize us to ship and bill each volume in a series, or "Advances" type publication automatically, immediately upon publication. This order will remain in effect until cancelled. Specify the volume number or title with which your order is to begin.



**from Academic Press.**

**THEORY  
AND EXPLANATION  
IN ARCHAEOLOGY**

**The Southampton Conference**

Edited by COLIN RENFREW,  
MICHAEL J. ROWLANDS, and  
BARBARA ABBOTT SEGRAVES

Comprises papers presented at the conference of the Theoretical Archaeology Group, held in Southampton, England in December 1980. All of the papers are directed towards the theoretical problems that archaeologists encounter in their efforts to explain the past and understand its changing patterns over time.

1982, 496 pp., \$49.50  
ISBN: 0-12-586960-6

**THE ESTABLISHMENT  
OF HUMAN  
ANTIQUITY**

DONALD K. GRAYSON

Drawing on primary literature, the author discusses nearly forgotten events that were of critical importance in establishing a long human existence and emphasizes the concepts that structured past scientific views.

1983, 288 pp., \$27.50  
ISBN: 0-12-297250-3

**THE INCA AND AZTEC  
STATES, 1400-1800**

**Anthropology and History**

Edited by GEORGE A. COLLIER,  
RENATO I. ROSALDO,  
and JOHN D. WIRTH

Brings together exciting new data about the internal workings of the Inca and Aztec civilizations. Emphasizes the perspective of the subordinate ethnic peoples who experienced Inca and Aztec domination and presents new understandings of how the constituent peoples were articulated into imperial systems.

1982, 488 pp., \$47.00  
ISBN: 0-12-181180-8

**A PREHISTORY  
OF AUSTRALIA, NEW  
GUINEA, AND SAHUL**

PETER J. WHITE and  
JAMES F. O'CONNELL

Covers the prehistory of Sahul—the continent formed when Australia, New Guinea, and Tasmania were joined due to lower sea levels. The authors explore the arrival of people on the continent about 50,000 years ago and their subsequent effects on it, and its effects on them from both chronological and problem-oriented perspectives.

1982, 296 pp., \$29.50  
ISBN: 0-12-746730-0

*Send payment with order and save postage and handling.  
Prices are in U.S. dollars and are subject to change without notice.*

**ACADEMIC PRESS, INC.**

*A Subsidiary of Harcourt Brace Jovanovich, Publishers*  
New York • London • Toronto • Sydney • San Francisco  
111 FIFTH AVENUE, NEW YORK, N.Y. 10003

313014



# New from Texas



## **Maya Glyphs: The Verbs**

Linda Schele

"... certainly the most important work on Mayan glyphic studies in a very long time."  
—David H. Kelley

Destined to be a standard work for many years, *Maya Glyphs* is the most comprehensive study available of the verb morphology and syntax of the Maya writing system. Schele's summary of methodology makes available in one place the most important discoveries and approaches to the Maya language of the last decade. \$35.00

## **A Late Formative Irrigation Settlement below Monte Albán: Survey and Excavation on the Xoxocotlán Piedmont, Oaxaca, Mexico**

Michael J. O'Brien, Roger D. Mason, Dennis E. Lewarch, and James A. Neely

A report of results and interpretations of archaeological fieldwork undertaken in the vicinity of a Prehispanic irrigation system on the piedmont below and to the east of the site of Monte Albán in Oaxaca, Mexico. *A Special Publication of the Institute of Latin American Studies*. \$25.00

*To be published in August*

## **Pulltrouser Swamp**

**Ancient Maya Habitat, Agriculture, and Settlement in Northern Belize**

Edited by B. L. Turner II and Peter D. Harrison

The Pulltrouser Swamp team conclusively demonstrates the existence of hydraulic, raised-field agriculture in the Maya lowlands between 150 B.C. and A.D. 850. This verification provides dramatic evidence of a large and probably organized work force engaged in sophisticated and complex agricultural technology. \$22.50

*Recently published*

## **Domesticated Animals from Early Times**

Juliet Clutton-Brock

"... an expert introduction to the study of the nature and early history of domestic mammals. ... Such an introduction has been needed for years. ..."  
—*American Antiquity*

\$24.95

*Publisher pays postage  
on prepaid orders.*

# TEXAS

University of Texas Press Box 7819 Austin, Texas 78712





SECOND EDITION

## ANCIENT MESOAMERICA

*Selected Readings*

Edited by

John A. Graham

University of California, Berkeley

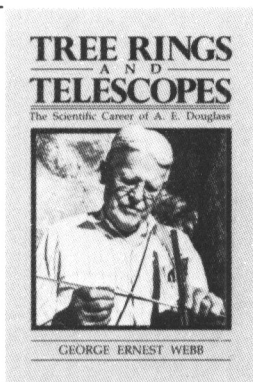
This new and completely updated work retains the most important articles from the first edition, with new articles comprising more than half the selections. Of special significance is Dr. Graham's landmark paper on his recent discoveries in Pacific Guatemala, which is being published here for the first time. Dr. Graham's project, at Abaj Takalik, uncovered Olmec and Maya carvings side by side yielding the oldest recorded dates yet found in the New World and thereby establishing existence of a sophisticated Highland Maya culture antedating the well-known Lowland Maya. These disclosures suggest to scientists that they may be coming close to the "cradle" of Middle American civilization. Twenty seven articles are included. Illustrated.

366 Pages, paperbound, \$12.95

Order from— **PEEK PUBLICATIONS**

**P. O. Box 50123, Palo Alto, CA 94303**

*Send for complete archaeology and art history catalog.*



*Discover the man who revolutionized archaeology—*

### **TREE RINGS AND TELESCOPES**

The Scientific Career of A. E. Douglass

*by George Ernest Webb*

The father of dendrochronology was not an archaeologist, but rather an astronomer who first conceived of tree-ring dating as a key to long-range weather prediction. The application of such an extraordinary analytical tool to prehistoric ruins is the crux of this fascinating book—as well as the capstone of a remarkable career. 250 pp., illstd. \$19.50 cloth.

## NEW ANTHROPOLOGICAL PAPERS

### **Cochise Cultural Sequence in Southeastern Arizona**

E. B. "Ted" Sayles, *et al.*

Documentation concerning the Cazador stage is presented for the first time, plus material on the Double Adobe Site. 200 pp., \$11.95 paper.

### **The Asturian of Cantabria:**

*Early Holocene Hunter-Gatherers in Northern Spain*

Geoffrey A. Clark

Proposes alternative models for Asturian settlement and subsistence systems using floral, faunal, and geotopographical evidence. 160 pp., \$18.95 paper.

### **Multidisciplinary Research at Grasshopper Pueblo**

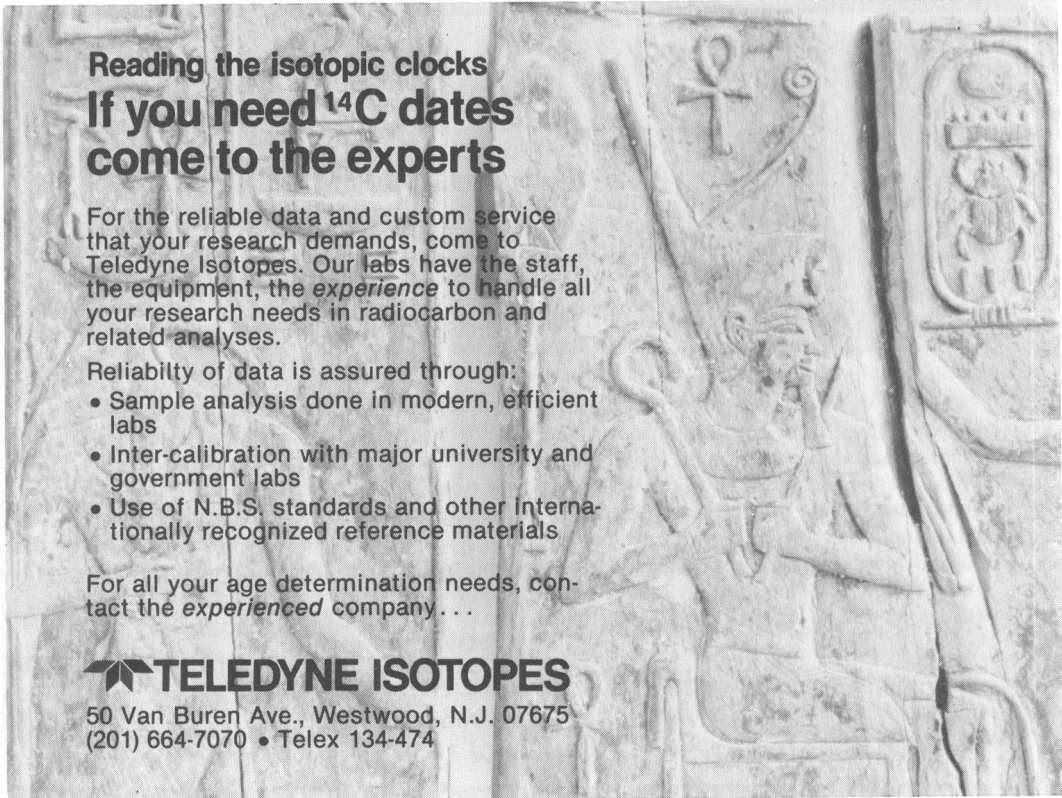
William A. Longacre, Sally J. Holbrook & Michael W. Graves, editors

Climatic causes for abandonment of a 14th-century pueblo are investigated by a wide-ranging team of researchers. 138 pp., \$12.95 paper.



**University of Arizona Press**

1615 East Speedway, Tucson, Arizona 85719



## Reading the isotopic clocks If you need $^{14}\text{C}$ dates come to the experts

For the reliable data and custom service that your research demands, come to Teledyne Isotopes. Our labs have the staff, the equipment, the *experience* to handle all your research needs in radiocarbon and related analyses.

Reliability of data is assured through:

- Sample analysis done in modern, efficient labs
- Inter-calibration with major university and government labs
- Use of N.B.S. standards and other Internationally recognized reference materials

For all your age determination needs, contact the *experienced* company...

 **TELEDYNE ISOTOPES**

50 Van Buren Ave., Westwood, N.J. 07675  
(201) 664-7070 • Telex 134-474



## 49TH ANNUAL MEETING SOCIETY FOR AMERICAN ARCHAEOLOGY

The Portland Hilton Hotel  
Portland Oregon  
Wednesday, April 11–Saturday, April 15, 1984

Annual Meeting Chair: Leslie Davis, Department of Sociology, Montana State University, Bozeman, MT 59715

### GUIDELINES FOR CONTRIBUTIONS

The Executive Committee has ruled that the privilege of presenting papers at the annual meeting of the Society will be restricted to paid-up members of the Society. The Committee further decided that a person may not deliver more than one paper although that person may, at the same meeting, chair a session or serve as junior coauthor of a paper presented by someone else.

Completed symposia proposals, abstracts of symposium papers, abstracts of contributed papers, abstracts of research reports, and abstracts for poster sessions must reach the program chairperson no later than October 15, 1983. *All proposals and abstracts should be submitted on appropriate SAA forms.* These forms are mailed in March to all SAA members with the ballot. Additional forms may be obtained from the Society at the address below. Authors of papers and symposia organizers will be notified of the Program Committee's decision as soon as possible. Abstracts of all papers and research reports accepted for presentation will be published in the final program. Long abstracts are no longer required.

#### SYMPOSIA

A symposium consists of a group of papers on a common theme. The symposium topic and the individual papers within it will be reviewed. Changes, such as consolidation of two symposia or changes in the individual papers, may be recommended.

Symposia organizers should contact the Program Chair no later than September 15, 1983 in order that the *Guidelines for Symposium Organizers* and a special symposium form can be sent to them.

Complete symposia proposals must be submitted as a *package* by the symposium organizer(s) and must be received by October 15, 1983. The package must include for every paper presented in the symposium:  
2 copies of the SAA Short Abstract Form and  
1 copy of the SAA Contributor Index Form.

#### CONTRIBUTED PAPERS (20 minutes)

Contributed papers are to be distinguished from Research Reports in that they generalize, synthesize, or compare and are addressed to problems of theory, method, culture history, or culture process. Contributed papers must follow the same format as the symposia papers, and each proposed presentation must include:

2 copies of the SAA Short Abstract Form and  
1 copy of the SAA Contributor Index Form.

#### RESEARCH REPORTS (10 minutes) AND POSTER SESSIONS

A research report is a description of the results of a recent field or laboratory research project. This year the research report section will be divided into oral presentation and poster session; the author may choose which form to use. The poster session is especially appropriate for research results that can be described graphically better than verbally. Research reports will be reviewed. If the number submitted exceeds the space and time available, they will be accepted *in the order of submission*. Each proposed presentation must include:

2 copies of the SAA Short Abstract Form and  
1 copy of the SAA Contributor Index Form.

Please follow these instructions carefully. Incorrect or late submissions can only be considered if space and time allow.

All other scheduling and room requests or committee meetings, promotional booths, etc. should be directed to Lucille D. Horn, 1703 New Hampshire Ave., N.W., Washington, DC 20009.



# CONTENTS

Editor's Corner	Dena F. Dincauze	227
Fifteen Years on the Rock: Archaeological Research, Administration, and Compliance on Black Mesa, Arizona	Shirley Powell, Peter P. Andrews, Deborah L. Nichols, and F. E. Smiley	228 253
Style and Social Information in Kalahari San Projectile Points	Polly Weissner	277
Earthworm Activity: A Source of Potential Disturbance of Archaeological Sediments	Julie K. Stein	277
Growth and Aggregation at Canyon Creek Ruin: Implications for Evolutionary Change in East-Central Arizona	Michael W. Graves	290
<b>REPORTS</b>		
Chemical Weathering of Bone in Archaeological Soils	E. M. White and L. A. Hannus	316
Precise Characterization of Guatemalan Obsidian Sources, and Source Determination of Artifacts from Quiriguá	Fred H. Stross, Payson Sheets, Frank Asaro, and Helen V. Michel	323 347
Directional Glyphs in Maya Inscriptions and Codices	Victoria R. Bricker	347
A Recently Discovered Amber Source near Totolapa, Chiapas, Mexico	Douglas Donne Bryant	354
<b>FORUM</b>		
On the Importance of the National Register of Historic Places	Steven A. LeBlanc	358
<b>COMMENTS</b>		
The Design and Function of the Intervalley Canal: Comments on a Paper by Ortloff, Moseley, and Feldman	I. S. Farrington	360
The Chicama-Moche Intervalley Canal: Social Explanations and Physical Paradigms	Charles R. Ortloff, Michael E. Moseley, and Robert A. Feldman	375
Oxygen Isotope Analysis and Seasonality Determinations: Limits and Potential of a New Technique	Geoffrey N. Bailey, Margaret R. Deith, and Nicholas J. Shackleton	390
Seasonality Determination by Oxygen Isotopic Profile: A Reply to Bailey et al.	John S. Killingley	399
<b>CURRENT RESEARCH</b>		
Far North, California and the Great Basin, Northwest		404
<b>REVIEWS AND BOOK ABSTRACTS</b>		
<b>Reviews</b>		
Binford: Bones: Ancient Men and Modern Myths	Glynn L. Isaac	416
Linares and Ranere: Adaptive Radiations in Prehistoric Panama (Double Review)	Wolfgang Haberland Robert P. Drolet	419 421
Lechtman and Soldi (editors): Runakunap Kawsayninkupaq Rurasquankunaqa: La tecnología en el mundo andino	Izumi Shimada	423
<b>Book Abstracts</b>		
Laurens-Anderson: An Archaeological Study of the South Carolina Inter-Riverine Piedmont; The Snyders Mound and Five Other Mound Groups in Calhoun County, Illinois; Alberta Archaeology: Prospect and Retrospect; Excavations at Santo Domingo Tomaltepec: Evolution of a Formative Community in the Valley of Oaxaca, Mexico; The Archaeology Workbook; The Complete Visitor's Guide to Mesoamerican Ruins: An Osteology of Some Maya Mammals; Southwestern Archaeology: A Bibliography; The Grimsby Site: A Historic Neutral Cemetery; Bottles on the Western Frontier		426
<b>EDITORIAL POLICY AND STYLE GUIDE FOR AMERICAN ANTIQUITY</b>		
ANNOUNCEMENT		429
	inside back cover	