

The JOURNAL of THE INSTITUTE OF NAVIGATION

VOL. IX, NO. 3

JULY

1956

Introduction to Inertial Navigation 249

D. E. ADAMS

'Bottle Post' and other Drifts 261

J. N. CARRUTHERS

Some Meteorological Aspects of High-level Navigation

I—Strong Winds in the Upper Atmosphere Above 15,000 ft. 282

J. K. BANNON

II—Jet Streams and the Pilot 288

BERNARD C. FROST

III—The Problems of Forecasting 293

T. H. KIRK

Practical Navigation over the North Atlantic 310

D. C. WILLIS

The Hydrographic Collections of the British Museum 323

R. A. SKELTON

M. O. U. S. E. 335

J. G. PORTER

Two Mariner's Astrolabes 338

DEREK J. PRICE

FORUM

The Use of Bisectors 345

Dead Reckoning Error over the North Atlantic 348

S-Diagrams for Solving Problems in Astronomical Navigation 354

The English and the Dutchman's Log 357

A New History of Navigation 360

Reviews 363

Record 366

THE INSTITUTE OF NAVIGATION
AT THE ROYAL GEOGRAPHICAL SOCIETY
1 KENSINGTON GORE LONDON SW7

JOHN MURRAY (PUBLISHERS) LTD., 50 ALBEMARLE STREET, LONDON W1

PRICE SEVEN SHILLINGS AND SIXPENCE

THE INSTITUTE OF NAVIGATION

Patron

H.R.H. THE DUKE OF EDINBURGH, K.G., K.T.

OFFICERS AND COUNCIL

President

Captain A. M. A. Majendie

Vice-Presidents

Captain M. E. Butler Bowdon, O.B.E., R.N.

Dr. G. E. R. Deacon, C.B.E., F.R.S.

Hon. Treasurer: Captain J. D. F. Elvish, O.B.E.

Chairman of the Technical Committee

Wing Commander E. W. Anderson, O.B.E., D.F.C., A.F.C.

Chairman of the Membership and Fellowship Committee

Captain R. W. Ravenhill, C.B.E., D.S.C., R.N. (ret.).

Other Members of the Council

Wing Commander D. Bower, M.B.E.,
A.F.C.

Mr. J. B. Parker

Commander P. G. Satow, D.S.C., R.N.

Group Captain E. Fennessy, O.B.E.

Captain G. C. Saul

Mr. D. O. Fraser

Mr. J. Vivian, D.S.O., D.F.C.

Mr. W. L. S. Harrison

Captain C. J. Wynne-Edwards, D.S.C.,

Air Vice-Marshal J. W. F. Merer, C.B.

R.N.

The directors of navigation at the Admiralty, the Air Ministry and the Ministry of Transport and Civil Aviation are invited to attend meetings of the Council as *ex-officio* members.

Executive Secretary: M. W. Richey. Assistant Secretary: Miss L. M. A. Tower

The Journal of the Institute of Navigation

The *Journal* is published quarterly by the Institute and is edited by the Executive Secretary. It contains original papers contributing to the science of navigation, including those presented at meetings of the Institute together with the ensuing discussion. In addition the *Journal* includes a record of current navigational work, reviews of important books, and other matters of concern to those interested in navigation.

The *Journal* is free to all members of the Institute. It is sold to the public at seven shillings and sixpence per copy or, by subscription, at thirty-one shillings per annum (post free) and may be obtained through all booksellers and John Murray (Publishers) Ltd., 50 Albemarle Street, London W1. American subscriptions at \$1.50 per copy or \$6 per annum (post free).

Contributions, which are welcomed from both members and non-members, should be addressed to the Editor.

Enquiries for advertising space should be addressed to the Institute offices.

The postal address of the Institute is:

The Institute of Navigation,
at The Royal Geographical Society,
1 Kensington Gore, London SW7.

Telephone: Kensington 5021.

**“The security
of such as pass
on the seas
upon their
lawful occasions”**

The modern mariner is protected alike “from the dangers of the sea and the violence of the enemy” with the aid of Marconi equipment.

The seamanlike way in which the Marconi Company has developed electronics has provided the seafarer with reliable shipborne radio-telegraph and radio-telephone equipment, accurate radar and radio-direction finding gear and trustworthy echometer sounding devices.

When he approaches the coast around the British Isles, and in many other seaways of the world, Marconi beacons in lightships, lighthouses and other seamarks provide him with precise data for ‘fixing’.

The harbour authorities, pilot vessels and auxiliary craft which serve him are more efficient because of the Marconi installations they operate. So, also, are the Naval and Naval Air Forces which defend him.



Lifeline of communication

MARCONI

MARINE RADAR AND COMMUNICATIONS

**MARCONI'S WIRELESS TELEGRAPH COMPANY LIMITED, CHELMSFORD, ESSEX
LN 1**

“DURING NINE-WEEK VOYAGE NO ADJUSTMENTS OR REPAIRS WERE MADE”

says Radio Officer J. S. Dalton—S.T. “NORTHERN SCEPTRE”



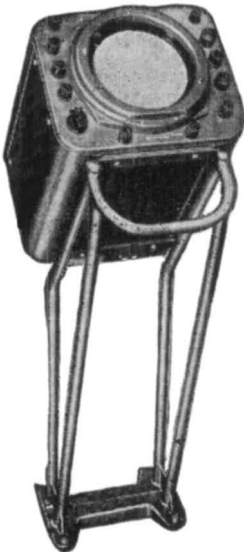
“At times on this salt fishing trip, ship echoes were observed at 30 miles showing strongly, these being of about 1,500 tons. Land was also seen at this range, also strongly. This coastline was very broken, being composed of small islands 200-300 feet high, though many were lower than this. These being known bad ‘radar targets’. Generally this coast showed well at 20 miles. The radar was used for picking up Esbjerg approaches.

The harbour approaches being made by radar first on the 15 miles range, the coast being sandy. The channel being marked by small buoys which were picked up very well at 5 to 6 miles and showing in a straight line.

During the voyage of nine weeks no adjustments or repairs were made of any sort, the equipment proving highly reliable and capable of running long periods.

My opinion of the 212 is that it is a highly satisfactory radar.”

Although Decca Radar is serving the mariner in many thousands of ships of all nations, there are occasions when its value under exceptionally bad conditions is of such significance that our users are pleased to write and tell us. In the belief that this is really worthwhile testimony, we present this series of factual incidents in the use of Decca Radar at sea.



**LOWEST COST
FULL PERFORMANCE
RADAR**

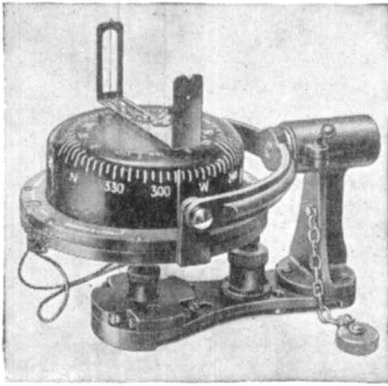
DECCA Radar

OVER 5,000 INSTALLATIONS

DECCA RADAR LIMITED • LONDON • ENGLAND

 DR 12d

The Sestrel-MOORE YACHT COMPASS



A Revolutionary Advance in Yacht Compass Design
 Clear perspex bowl. Compass card can be read in the vertical position as well as from above. "Circum" single ring magnet gives extreme steadiness in heavy weather. Design allows compass to be mounted on eye level and magnified card image is clearly visible up to ten feet. Two patterns of bracket fitting are available, the pillar pattern "A" for fitting to the coach roof or the bulkhead pattern "B."
 (Specify type when ordering). Price **£28.0.0**
 "Sestrel" Bearing Sight for use with Sestrel-Moore Compass. £3 15s.

HENRY BROWNE & SON, LTD.

Sales Dept. & Service Depot:

71 LEADENHALL STREET, LONDON, E.C.3

Telephones: Sales-AVenue 6060. Service-AVenue 2156

Head Office: **BARKING, ESSEX**

NOTWITHSTANDING

modern scientific attainment there are

RISKS at Sea and in the Air
 and notably on *terra-firma*.

The obvious and appropriate Company for the insurance of the property and liabilities of all professional and amateur Navigators is the "Navigators and General".

Founded in 1921 under the chairmanship of the late Admiral Sir John Franklin Parry, K.C.B., we specialize in the insurance requirements of all who are or were connected with the sea. We have added interest in their insurance problems in that the majority of our executive staff served, at one time, in the Royal or Merchant Navy. We offer impeccable security and are renowned for prompt and generous settlement of claims.

Classes of business transacted include :

- Fire, Accident, Marine
- Personal Effects (Ashore, Afloat and Airborne)
- Navigator's Indemnity (Sea and Air)

Consult your Broker or write for particulars :

**THE NAVIGATORS AND GENERAL
 INSURANCE CO. LTD.**

15/16 CULLUM ST., LONDON, E.C.3.

Phone : MANsion 2121 . Grams : Avigatinsu Fen London

A sure guide to a good ship



On the high seas . . .
 (and in narrow waters) Brown Gyro
 Equipment is renowned for dependability—merchant fleets of the world, from liners to oil tankers, rely on these navigational aids.



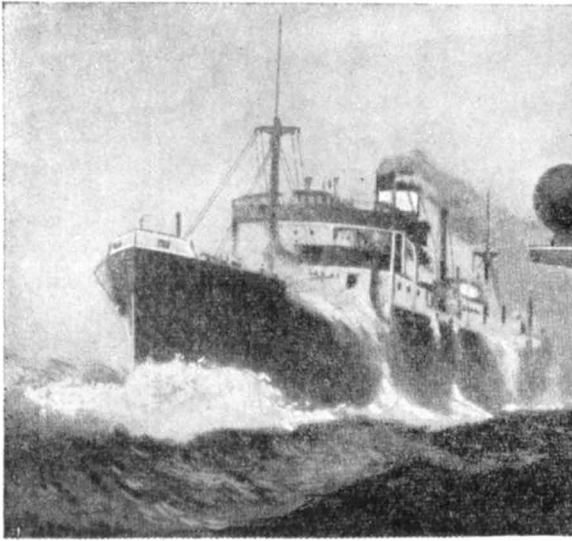
Coming into harbour . . .
 (and in open waters) nothing helps good seamanship better than Subsig Echo Sounding Equipment—accurate to the last foot of clearance, and available in recording or indicator models.



Brown

S. G. BROWN LTD.
 (Incorporating The Submarine Signal Co., London, Ltd.)

**SHAKESPEARE STREET
 WATFORD, HERTS.**
 Tel. 7241. Grams. "Sibrownix, Watford"



FULL SPEED AHEAD!

WITH



NAVIGATIONAL INSTRUMENTS

The "HEZZANITH" Patent MARK VII
**PROJECTOR BINNACLE
 AND COMPASS**

By means of a series of optical elements an enlarged erect image of a portion of the card covering an arc of 40° in length is produced on a ground glass screen which is viewed in an adjustable plane mirror.

All stray light is effectively screened, and there is a completely unobstructed view of the card from above, permitting the normal use of an azimuth instrument by day or night.

Send for our special Projector Binnacle
 Leaflet (Nj.56).

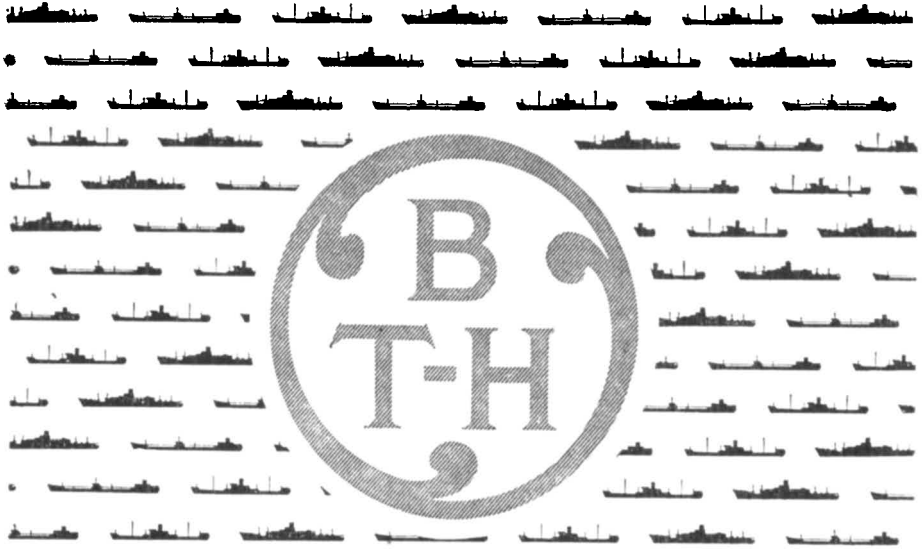
HEATH & COMPANY

(Incorporated with W. F. Stanley & Co. Ltd.)

NEW ELTHAM - LONDON, S.E.9

Phone : ELTHAM 3836

Cables : "Polaris, Souphone, London"



MARINE RADAR

has been installed
in over 3 million tons
of shipping



BRITISH THOMSON-HOUSTON
THE BRITISH THOMSON-HOUSTON COMPANY LIMITED • RUGBY • ENGLAND.
Member of the AEI group of companies

A 4910

OBSERVATIONAL ERRORS

E. W. ANDERSON and J. B. PARKER

This is the first of a series of monographs which the Institute is sponsoring on subjects closely allied to navigation. Essentially it gives an elementary account of the ideas and concepts behind the statistical theory of errors. Though the examples used are primarily navigational, it is designed to appeal to all who have to deal with information or observations which are subject to error; navigation thus appears mainly as a convenient and convincing source of illustration. The style of writing is vivid and direct, and has led to an unconventional but simple presentation that will appeal to the practical man.

JOHN MURRAY

for the Institute of Navigation

Royal 8vo. 32 pages, 25 diagrams. Price 5s. net

Old book—NEW LOOK

THE ART OF ASTRONOMICAL NAVIGATION

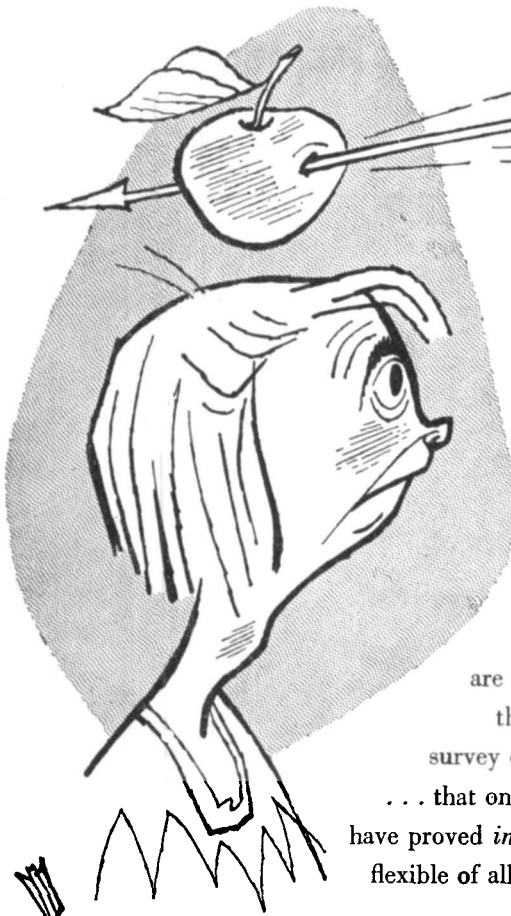
by S. M. BURTON

being the modernized version of the old favourite

A MANUAL OF MODERN NAVIGATION

BROWN, SON & FERGUSON, Ltd.
52-58, DARNLEY STREET, GLASGOW, S.1

Price 18/6



the
precise
position...

... is that the results of any survey are as accurate as the technique used ... that savings in time and manpower cut survey costs and so increase the area covered ... that on these accounts, mobile Decca Chains have proved *in the field* to be the most efficient and flexible of all electronic position fixing techniques.

Precise position fixing with low ambiguity and true repeatability over long or short periods.

Ease of operation.

Built-in electronic referencing, eliminating "reference buoys."

Decca operates irrespective of height or terrain—the same Chain can be used by ships, aircraft, vehicles or ground parties.

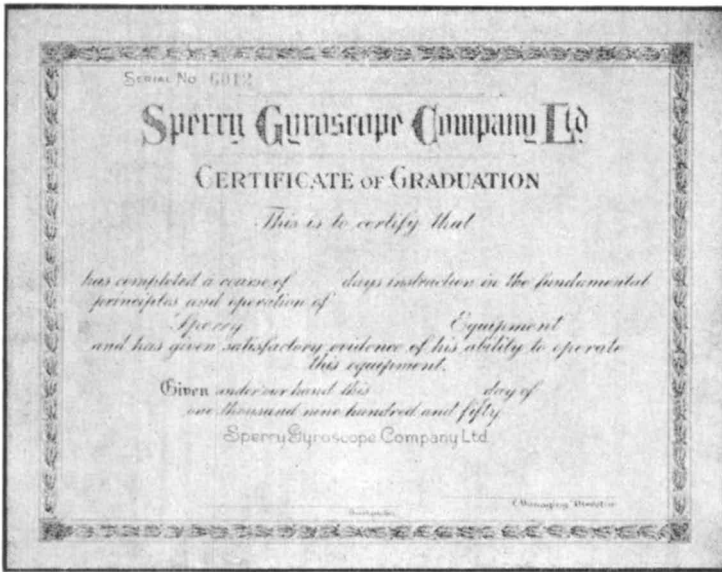
Automatic and continuous map display of track and position with the Decca Flight Log and Marine Automatic Plotter.

DECCA NAVIGATOR

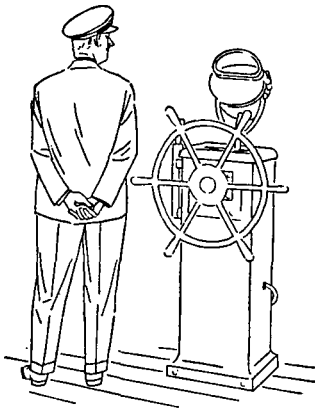
Mobile Chains for every kind of survey

THE DECCA NAVIGATOR COMPANY LIMITED, LONDON

When you buy **SPERRY**
you don't just buy the equipment...



Well over 40,000 Officers have graduated on Sperry Gyro Compasses and Gyropilots in Sperry schools, over 6,000 in London alone.



This enormous output of Officers familiar with the use of Sperry equipment has a tremendous bearing on the equipment you buy. It is a service you will not find listed in a Sperry catalogue. Nor will you find listed the confidence and reliability these officers have subsequently gained through years of constant use of Sperry navigational aids on the oceans of the world. When you buy Sperry you buy more than a piece of equipment—you are investing in a tradition of reliability founded on over 40 years' experience in marine navigational equipment.

SPERRY *Marine Navigational Equipment*

SPERRY GYROSCOPE CO. LTD., GREAT WEST RD., BRENTFORD, MIDDX. Tel.: EALing 6711

THE MATHEMATICAL PRACTITIONERS OF TUDOR AND STUART ENGLAND

E. G. R. TAYLOR

In his Foreword to this book, the Astronomer Royal writes: 'Professor Taylor has given a fascinating account of these mathematical practitioners and of the development of ideas, methods and instruments from Tudor times to early in the eighteenth century, which forms a valuable contribution to a little-known epoch in the history of navigation and surveying.'

'The Institute of Navigation is to be congratulated on having sponsored this valuable book.' *Journal of the Royal Naval Scientific Service.*

'An important contribution to the history of scientific progress in England, and in particular to the history of navigation.' *The Geographical Journal.*

'Members of the Institute of Navigation have reason to congratulate themselves upon their happy choice of an author.' *Journal of the Franklin Institute (U.S.A.).*

'This is a most important and interesting book.' *The Nautical Magazine.*

CAMBRIDGE UNIVERSITY PRESS

for the Institute of Navigation

Demy 8vo. 442 pages, illustrated. Price 55s. net (45s. to Members).

THE USE OF RADAR AT SEA

'Whatever happens the book will remain a milestone on the road of radar in its relation to shipping.' *Hansa (Hamburg).*

'It should find a place in the chart-room bookcase of every radar-fitted vessel and in the private reference library of every navigator.' *Journal of the Honourable Company of Master Mariners.*

'The wording is so clear and simple that it gives the reader confidence.' *International Hydrographic Bulletin.*

'One of the finest books on the subject.' *Navigation (Los Angeles).*

'There can be no doubt that a copy placed on board any radar-fitted ship would pay dividends.' *Shipping World.*

'An excellent handbook for the navigator.' *Navigation (Paris).*

'Undoubtedly as a textbook the work stands alone.' *Merchant Navy Journal.*

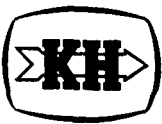
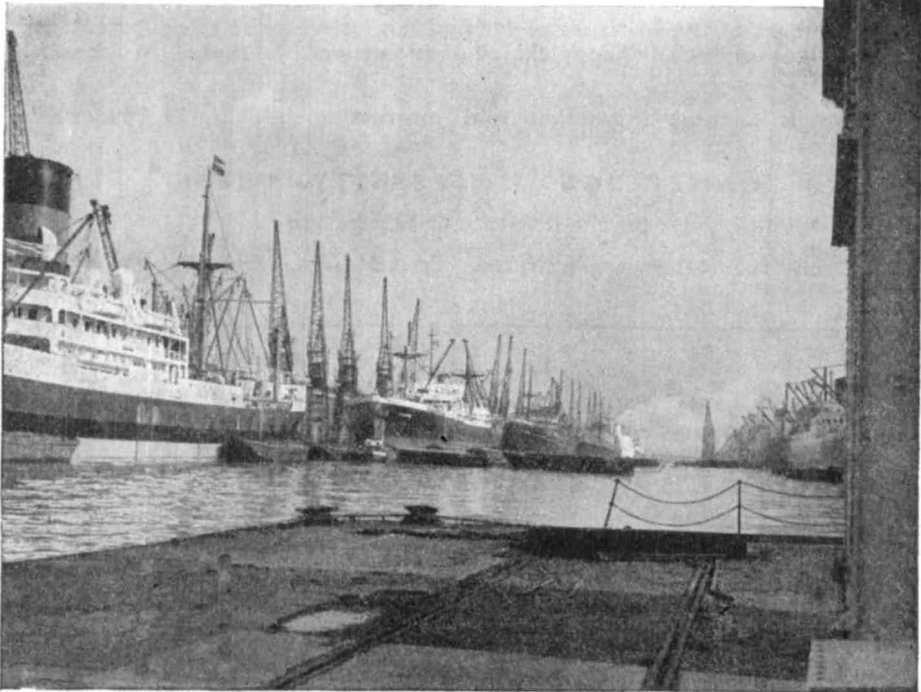
HOLLIS & CARTER

for the Institute of Navigation

Royal 8vo. 270 pages, illustrated. Price 30s. net.

All these ships rely on **KELVIN HUGHES**

Taken in the King George V Dock, this picture shows a busy scene at the Port of London. Every vessel shown uses Kelvin Hughes equipment. The two nearest ships are fitted with the latest type 2C Marine Radar, and they all rely on the proved accuracy of Kelvin Hughes Compasses, Sextants, Echo Sounders, etc., to ensure high standards of navigational efficiency. Chart Instruments, Pneumercator Gauges, Stress and Stability Indicators . . . these also are among the Kelvin Hughes instruments carried by this representative gathering of deep sea vessels.



KELVIN HUGHES

THE TWO GREATEST NAMES IN NAVIGATION