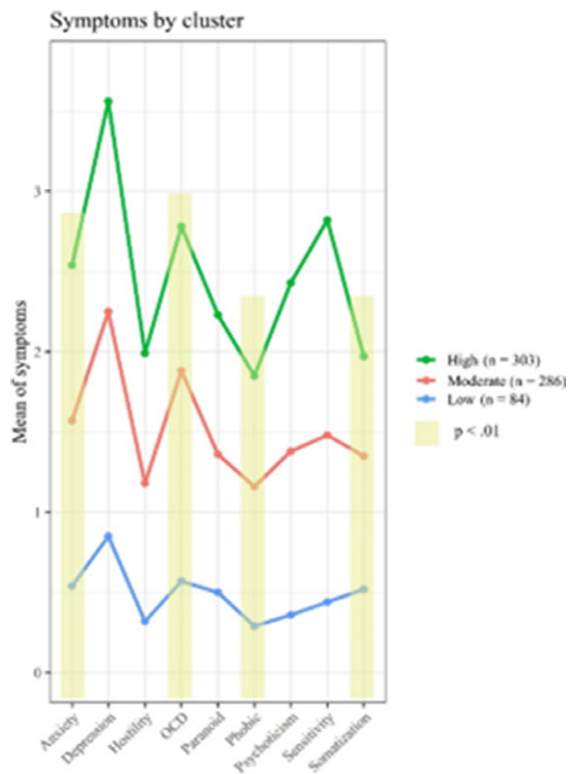


Participants of the LS class were more likely to be women, older and unemployed and was related, according the analysis, with severe medical damage when compared with other groups ($P < 0.01$).

Image:



Conclusions: According with the predictive model the study suggests different symptom-frequency clusters related with suicide attempt outcomes. Suicide ideation presence and intensity is related with HS class and acquired capability of suicide. Suicide ideation intensity is also related with number of diagnosis and number of previous attempts. Suicide behaviours presence is associated with being student and number with HS profile. Both presence and number were related with number of diagnosis as well as number of previous attempts (the higher all these clinical factors, the more intense of ideation in the last month). Finally, the severity of medical damage was related with LS profile and unemployed/retired work status. The dimensional symptom profile could be useful to predict suicide attempt outcome. Further study is needed to clarify this relation.

Disclosure of Interest: None Declared

EPP0901

Association between adverse childhood experiences and the number of suicide attempts in lifetime

J. Andreo-Jover^{1,2*}, E. Fernandez-Jimenez^{3,4}, J. Curto-Ramos⁴, N. Angarita-Osorio⁵, N. Roberto⁶, A. De la Torre-Luque⁷, A. Cebria⁸, M. Diaz-Marsa⁹, M. Ruiz-Veguilla¹⁰, J. B. Bobes Garcia¹¹, M. Fe Bravo Ortiz¹² and V. Perez Sola¹²

¹Hospital La Paz Institute for Health Research (IdiPAZ); ²Department of Psychiatry, Universidad Autónoma de Madrid (UAM); ³Instituto de

Investigación del Hospital Universitario La Paz (IdiPAZ); ⁴Department of Psychiatry, Clinical Psychology and Mental Health, La Paz University Hospital, Madrid; ⁵Mental Health Research Group, Hospital del Mar Medical Research Institute (IMIM); ⁶Bipolar and Depressive Disorders Unit, Hospital Clinic, Institute of Neurosciences, University of Barcelona, IDIBAPS, CIBERSAM, Barcelona; ⁷Departamento de Medicina Legal, Psiquiatría y Patología, Centro de Investigación Biomédica en Red en Salud Mental (CIBERSAM), Madrid; ⁸Hospital Parc-Taulí, Barcelona; ⁹Hospital Clínico San Carlos, Madrid; ¹⁰Hospital Virgen del Rocío, Sevilla; ¹¹Universidad de Oviedo-HUCA, Oviedo and ¹²Hospital La Paz, Madrid, Spain

*Corresponding author.

doi: 10.1192/j.eurpsy.2023.1182

Introduction: Adverse childhood experiences (ACEs), defined as abuse, neglect, or a dysfunctional household in childhood, have been associated with suicidality (Fjeldsted et al., 2020). Every type of ACE has a direct impact on suicide ideation, self-harm and/or suicide attempt (Angelakis et al., 2019).

Objectives: We aim to quantify the association between types of ACEs (including emotional, physical, sexual abuse, and emotional and physical neglect) and the number of suicide attempts in lifetime.

Methods: We included 748 patients who attempted suicide at least once. They were asked to complete the Columbia-Suicide Severity Rating Scale (CSSRS), and the Childhood Trauma Questionnaire-Short Form (CTQ-SF). Logistic regression models were run to assess the association between each ACE type and the number of suicide attempts.

Results: Poisson univariate regression analyses show a linear trend in the relationship between having a higher number of suicide attempts and having suffered every ACE type in childhood ($p < 0.05$). Our results show a lower percentage of previous suicide attempts among participants without ACEs, and an increasing tendency among patients with various types of ACEs. The rate of ACEs types is significantly higher in the group with previous suicide attempts than in the first-attempt group ($p = 0.000$).

Image:

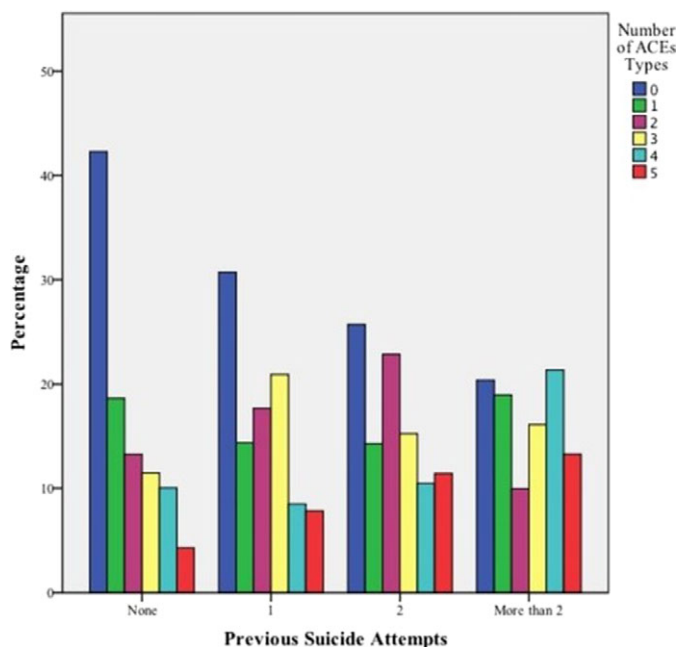
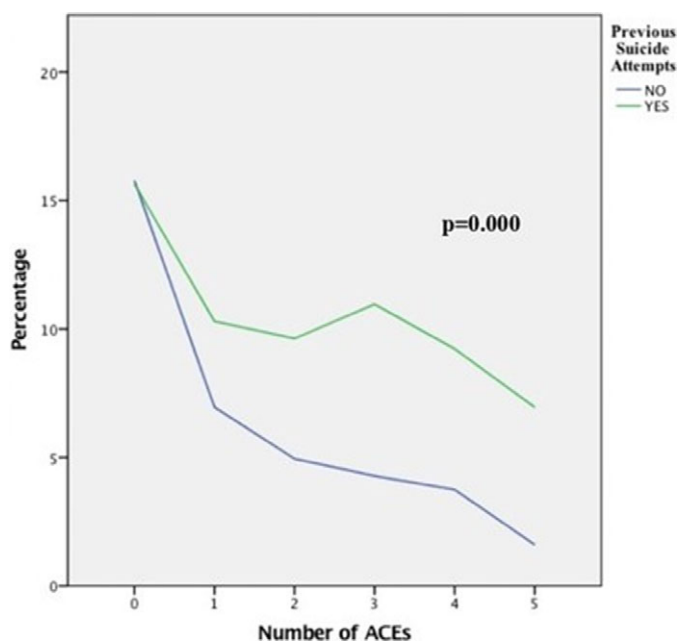


Image 2:



Conclusions: This study contributes to clarify the role of childhood trauma in the number of suicide attempts in lifetime. This has important implications for reducing suicide rates, and preventing future re-attempts. Further studies analysing every construct of childhood trauma may contribute to the detection of suicidal behaviour.

Fundings: This work was supported by the Instituto de Salud Carlos III (grant number: PI19/00941 SURVIVE) and co-funded by the European Union (grant numbers: COV20/00988, PI17/00768), the European Union's Horizon 2020 research and innovation programme Societal Challenges (grant number: 101016127), and the Fundación Española de Psiquiatría y Salud Mental

Acknowledgements: SURVIVE project (PI19/00941)

Keywords: Suicide attempt, Adverse Childhood Experiences

References: Angelakis, I., Gillespie, E. L., & Panagioti, M. (2019). Childhood maltreatment and adult suicidality: A comprehensive systematic review with meta-analysis. *Psychological Medicine*, 49 (7), 1057-1078. <https://doi.org/10.1017/S0033291718003823>
Fjeldsted, R., Teasdale, T. W., & Bach, B. (2020). Childhood trauma, stressful life events, and suicidality in Danish psychiatric outpatients. *Nordic Journal of Psychiatry*, 74(4), 280-286. <https://doi.org/10.1080/08039488.2019.1702096>

Disclosure of Interest: None Declared

EPP0902

Child and Adolescent Suicide Rates and Economic Crisis in South Korea using Hierarchical Age-Period-Cohort Analysis

J. Song^{1*}, B. R. Roh² and H. J. Hong³

¹Department of Psychiatry, National Health Insurance Service Ilsan Hospital, Goyang; ²Department of Social Welfare, Semyung

University, Jecheon and ³Department of Psychiatry, Hallym University Sacred Heart Hospital, Anyang, Korea, Republic Of

*Corresponding author.

doi: 10.1192/j.eurpsy.2023.1183

Introduction: Suicide is a complex problem in which individual, family social factors are interrelated. The 1997 Asian financial crisis caused a major economic crisis in Korea, and Korea received bailout support from the International Monetary Funds(IMF) from December 23, 1997 to August 23, 1997.

Objectives: This study aimed to investigate the relationship between the suicide rate of children and adolescents who grew up during this economic crisis in Korea.

Methods: Suicide rates are calculated according to gender, region, and age of 5 years (10-14 years old, 15-19 years old, 20-24 years old) using suicide death data from the Korea National Statistical Office from 2000 to 2017. The cohort of interest in the study is the group that was in childhood and early adolescence between 1997-2000 and corresponds to 1986-1995 in terms of birth year. Cohorts are divided into 1986-1989 (G1), 1990-1992 (G2), and 1993-1995 (G3) according to birth year. These groups were 8-14 years old for G1 and 5-10 years old for G2, 2-7 years old for G3 during 1997-2000, during the economic crisis. The Age-Period-Cohort analysis and linear mixed-effects regression models are used and the moderating effect on region and age is also analyzed.

Results: The 10-24 year-old suicide rate was higher in males than females, in older age groups, earlier in birth years in the birth cohort, and in rural than urban areas. Suicide rates between the ages of 20-24 years were particularly high among men living in rural areas. During the national economic crisis, the suicide rate was higher among adolescents than preschoolers (G3 < G1) (p<0.001), and this trend was observed for both men and women. However, the main effect of the cohort was not observed at a statistically significant level.

Conclusions: The national economic crisis has a negative impact on the mental health of children and adolescents, and it is more negative for adolescents than for children, which can increase the suicide rate between the ages of 20-24.

Disclosure of Interest: None Declared

EPP0903

Telephone-Delivered Interventions for Suicide Prevention in Schizophrenia and Related Disorders: A Systematic Review

L. Comendador Vázquez^{1,2*}, A. I. Cebrià^{1,3,4}, A. Sanz^{5,6}, V. Pérez^{2,3,7} and D. J. Palao^{1,2,3}

¹Mental Health Service. Hospital Universitari Parc Taulí, Corporació Sanitària Parc Taulí, Sabadell; ²Department of Psychiatry and Forensic Medicine, Faculty of Medicine, Universitat Autònoma de Barcelona, Bellaterra; ³Centro de Investigación Biomédica en Red de Salud Mental (CIBERSAM), Madrid; ⁴Department of Clinical and Health Psychology, Faculty of Psychology; ⁵Department of Basic, Developmental and Educational Psychology; ⁶Stress and Health Research Group (GIES), Universitat Autònoma de Barcelona, Bellaterra and ⁷Institut de Neuropsiquiatria i Addiccions (INAD), Institut Hospital del Mar d'Investigacions Mèdiques (IMIM), Parc de Salut Mar, Barcelona, Spain

*Corresponding author.

doi: 10.1192/j.eurpsy.2023.1184