



A vortex sheet based analytical model of the curled wake behind yawed wind turbines

Majid Bastankhah^{1,†}, Carl R. Shapiro^{2,3}, Sina Shamsoddin⁴,
Dennice F. Gayme² and Charles Meneveau²

¹Department of Engineering, Durham University, Durham DH1 3LE, UK

²Department of Mechanical Engineering, Johns Hopkins University, Baltimore, MD 21218, USA

³US Department of Energy, AAAS Science and Technology Policy Fellow, Building Technologies Office, Washington, DC 20585, USA

⁴Swiss Finance and Property Group, Seefeldstrasse 275, 8008 Zurich, Switzerland

(Received 25 May 2021; revised 28 September 2021; accepted 2 November 2021)

Motivated by the need for compact descriptions of the evolution of non-classical wakes behind yawed wind turbines, we develop an analytical model to predict the shape of curled wakes. Interest in such modelling arises due to the potential of wake steering as a strategy for mitigating power reduction and unsteady loading of downstream turbines in wind farms. We first estimate the distribution of the shed vorticity at the wake edge due to both yaw offset and rotating blades. By considering the wake edge as an ideally thin vortex sheet, we describe its evolution in time moving with the flow. Vortex sheet equations are solved using a power series expansion method, and an approximate solution for the wake shape is obtained. The vortex sheet time evolution is then mapped into a spatial evolution by using a convection velocity. Apart from the wake shape, the lateral deflection of the wake including ground effects is modelled. Our results show that there exists a universal solution for the shape of curled wakes if suitable dimensionless variables are employed. For the case of turbulent boundary layer inflow, the decay of vortex sheet circulation due to turbulent diffusion is included. Finally, we modify the Gaussian wake model by incorporating the predicted shape and deflection of the curled wake, so that we can calculate the wake profiles behind yawed turbines. Model predictions are validated against large-eddy simulations and laboratory experiments for turbines with various operating conditions.

Key words: wakes

† Email address for correspondence: majid.bastankhah@durham.ac.uk

© The Author(s), 2021. Published by Cambridge University Press. This is an Open Access article, distributed under the terms of the Creative Commons Attribution licence (<https://creativecommons.org/licenses/by/4.0/>), which permits unrestricted re-use, distribution, and reproduction in any medium, provided the original work is properly cited.

1. Introduction

Analytical models of various fluid mechanical phenomena in wind energy play an important role for basic understanding and for design and control of wind farms. Prime examples are models for the wind turbine wake velocity defect and its downstream evolution commonly used in wind farm layout optimization (Jensen 1983; Stevens & Meneveau 2017; Porté-Agel, Bastankhah & Shamsoddin 2020). In the classic Jensen model, for instance, a linearly expanding wake with a top-hat shape is assumed. More recent models allow for more realistic wake cross-sections with a Gaussian distribution (Bastankhah & Porté-Agel 2014), and cross-sections that transition from top hat near the turbine to Gaussian further downstream have also been proposed (Shapiro *et al.* 2019).

Analytical wake models can be particularly useful in implementation of wake mitigation strategies such as wake steering, which has been receiving growing attention as an important control approach for increasing wind farm power output (Fleming *et al.* 2014; Gebraad *et al.* 2014; Bastankhah & Porté-Agel 2015; Campagnolo *et al.* 2016; Howland *et al.* 2016; Schottler *et al.* 2017; Bartl *et al.* 2018; Lin & Porté-Agel 2019; Kleusberg, Schlatter & Henningson 2020; Speakman *et al.* 2021). Achieving increased power output through wake steering involves turbines, often in the front rows of wind farms, being intentionally operated in yawed conditions to redirect their wakes away from downwind turbines. Although this reduces the power produced by the yawed turbines, research has shown that the total wind farm efficiency can improve as a result of more power generated by downwind turbines (Park & Law 2016; Bastankhah & Porté-Agel 2019; Fleming *et al.* 2019; Howland, Lele & Dabiri 2019; King *et al.* 2021). Yawed turbine wake flows are known to exhibit complex features which makes their modelling more challenging than their unyawed counterparts. The most striking fluid-dynamic feature of a yawed turbine wake is arguably its curled cross-sectional shape (i.e. a kidney-shaped cross-section). This shape arises due to the action of a counter-rotating vortex pair (CVP) as detailed in Howland *et al.* (2016). Counter-rotating vortex pairs are typically generated when forcing with spatial cross-stream variations is applied perpendicular to the flow direction. One of the most notable examples are vortices trailing from finite-span wings that roll-up and lead to the formation of a CVP, i.e. wingtip vortices or wake vortices in the aerodynamics literature. The formation and evolution of these vortical structures has been the subject of numerous studies since seminal works of Prandtl and Lancaster (see Anderson (2011), and references therein). As noted in Bastankhah & Porté-Agel (2016), the CVP observed in yawed turbine wakes is also similar to those formed in many other free shear flows with strong spanwise variations of cross-wind velocity such as cross-flow jets (see, e.g. the review of Mahesh 2013).

In order to exploit the basic understanding of induced velocity and circulation of CVPs generated by finite-span wings, Shapiro, Gayme & Meneveau (2018) proposed to regard a yawed turbine as a lifting surface with an elliptical planform. Based on this approach, the lateral component of the thrust force can be regarded as the transverse lift force. This analogy made it possible to determine: (i) the distribution of circulation at the yawed rotor modelled as a lifting line, and (ii) the transverse velocity (equivalent to downwash velocity for finite-span wings) at the rotor disk due to the yaw offset. The latter enabled modelling of the transverse displacement of the wake but the wake itself was still assumed to retain a circular cross-sectional shape rather than the curled shape observed in practice. The associated vorticity distribution was later used by Martínez-Tossas *et al.* (2019, 2021) to develop a Lagrangian vorticity transport model that can predict the curled shape of the wake after numerical integration. Recently, Martínez-Tossas & Branlard (2020) and Zong & Porté-Agel (2020) have instead expressed rates of vorticity shedding at rotor

blade tips using vortex cylinder theory (Coleman, Feingold & Stempin 1945; Burton *et al.* 1995; Branlard & Gaunaa 2016) to determine the trailing vorticity distribution behind a yawed rotor. The numerical model developed by Zong & Porté-Agel (2020) also takes into account the redistribution of point vortices in the wake due to their self-induced velocities. More recently, Shapiro, Gayme & Meneveau (2020) have solved the linearised mean streamwise vorticity transport equation to develop an analytical expression that can predict the decay of the CVP due to atmospheric turbulence. Bossuyt *et al.* (2021) have also experimentally demonstrated the impact of vortical structures shedding from a misaligned (either tilted or yawed) rotor on the curled shape of the wake downstream.

Capturing the curled shape of the wake for yawed turbines is of great importance since curling affects how much the wake will effectively overlap with downstream wind turbines, thus affecting the predicted power generation. However, models of the curled wake shape in the literature require numerical integration, and existing analytical wake models (e.g. Bastankhah & Porté-Agel 2016; Qian & Ishihara 2018; Shapiro *et al.* 2018; Blondel *et al.* 2020; King *et al.* 2021) cannot capture this deformation of the wake shape. There are several advantages to analytically expressed models that represent the trends in simple and explicit forms. Apart from their low computational cost, analytical flow models (Meneveau 2019) often prove to be useful in revealing additional insights on flow physics that may not be evident using numerical simulation tools. Therefore, the current study aims at developing an analytical model to predict displacement and shape deformation of the wake behind a yawed turbine. The proposed model is inspired by prior works on two-dimensional vortex sheets (e.g. Rottman, Simpson & Stansby 1987; Coelho & Hunt 1989). The proposed analytical model predicts displacement and deformation of a vortex sheet, shedding from the circumference of a yawed rotor, as it is convected downstream. The vortex sheet model is then combined with a model for downstream evolution of wake velocity deficit to predict the shape of the curled wake and velocity distribution downwind of a yawed turbine.

The remainder of the paper is organised as follows. Section 2 derives the vortex sheet, truncated power series solution for the yawed turbine wake in uniform, ideal flow, and model predictions are compared with numerical simulation under laminar uniform inflow. In § 3 the model is extended to cases with turbulent boundary layer inflow, and the results are compared with corresponding large-eddy simulation (LES) data. Finally, § 4 provides a summary of the developed model and our main conclusions.

2. Vortex sheet evolution in uniform, ideal flow

2.1. Evolving vortex sheet governing equations

As shown in Shapiro *et al.* (2020), among others, vortices shedding from the circumference of the yawed rotor represented as an actuator disk form a tubular vortex sheet. The objective of this section is to model the shape evolution of this vortex sheet with downstream distance or, equivalently, with time. Only the streamwise component of the shedding vorticity is modelled in this work because the lateral wake deflection and the deformation of the wake cross-section are mainly due to the velocities induced by the streamwise component of shedding vorticity (Martinez-Tossas & Branlard 2020). The vortex sheet consists of semi-infinite streamwise vortex lines. In order to enable solving the governing equations analytically, following Coelho & Hunt (1989) and Rottman *et al.* (1987), we assume that the vortex sheet is planar and that its constituent vortex lines are infinite instead of semi-infinite, an approximation that improves at increasing distances from the origin.

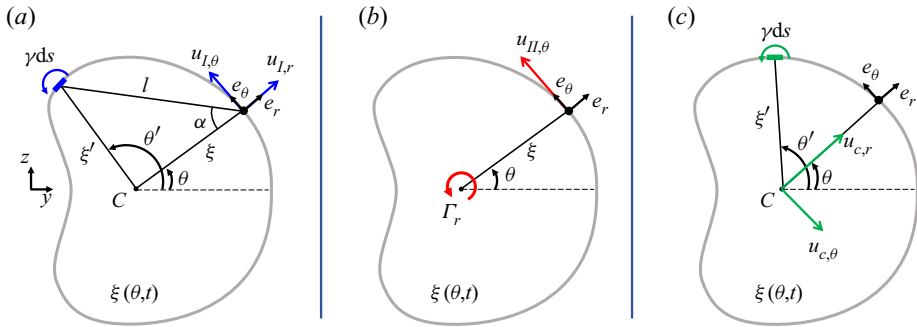


Figure 1. Schematic of the vortex sheet and different velocity terms on the right-hand side of (2.4). (a) Self-induced vortex sheet velocity, u_I . (b) Vortex sheet velocity induced by the point vortex at the vortex sheet centre, u_{II} . (c) Velocity of the vortex sheet centre, u_c .

Figure 1 shows a schematic of the vortex sheet in the plane normal to the incoming flow. The (x, y, z) coordinate system is defined with an origin at the rotor centre and with x in the streamwise direction (i.e. parallel to the incoming flow) and y and z in the spanwise and vertical directions, respectively. Alongside this Cartesian system, we define a polar coordinate system of (r, θ) in the yz -plane (i.e. plane normal to the incoming flow). This polar coordinate system is attached to the centre of the vortex sheet, denoted by C . The position of C in the (x, y, z) coordinate system is denoted by (x_c, y_c, z_c) . As r is the radial distance from C , one can write $r^2 = (y - y_c)^2 + (z - z_c)^2$. The polar angle θ is measured from the positive y -axis toward the positive z -axis such that $\tan \theta = (z - z_c)/(y - y_c)$. The shape of the vortex sheet is represented by the polar function $\xi(\theta, t)$ that measures the distance of the vortex sheet from the centre, where t is time. Our main objective is to describe the evolution of the vortex sheet as a function of time t in a frame moving downstream with the convection velocity U_{con} , i.e. determine $\xi(\theta, t)$. This is equivalent to determining the downstream spatial evolution of the vortex sheet, with $x = U_{cont}t$. The sheet location $\xi(\theta, t)$ obeys

$$\xi = \xi_0 + \int u_r(\theta, t) dt, \tag{2.1}$$

where $\xi_0 = \xi(\theta, 0)$ and $u_r(\theta, t)$ denotes the radial velocity of the vortex sheet, which is affected by the strength of the evolving vortex sheet, whose evolution is treated next.

Let us denote the strength of the vortex sheet by $\gamma = \gamma(\theta, t)$, where the vortex strength γ is defined as the amount of circulation per unit length. In addition to the vortex sheet, there is a point vortex at C with a circulation of Γ_r (see figure 1b) to model the rotor root vortex, which is elaborated later in § 2.3. We will show in § 2.3 that the initial condition for the strength can be written as

$$\gamma_0 = \gamma(\theta, 0) = \gamma_r + \gamma_b \sin \theta \quad \text{at } r = \xi_0, \tag{2.2}$$

$$\Gamma_r = -2\pi\xi\gamma_r \quad \text{at } r = 0, \tag{2.3}$$

where γ_r and γ_b are constants depending on turbine operating conditions. Later in § 2.3, we show that γ_b is related to the vorticity generated due to turbine yaw, while γ_r and Γ_r are related to the vorticity generated by turbine rotating blades. Our focus now is to predict the deformation of the vortex sheet provided that the initial conditions are given by (2.2)–(2.3).

The velocity of the vortex sheet $\mathbf{u}(\theta, t)$ with respect to a coordinate system attached to the centre C is given by

$$\underbrace{\mathbf{u}(\theta, t)}_{\text{vortex sheet velocity with respect to } C} = \underbrace{\mathbf{u}_I}_{\text{self-induced vortex sheet velocity}} + \underbrace{\mathbf{u}_{II}}_{\text{vortex sheet velocity induced by point vortex at } C} - \underbrace{\mathbf{u}_C}_{\text{velocity of } C}. \quad (2.4)$$

In (2.4) and hereafter, bold letters denote vectors. Next, we employ the Biot–Savart law to determine the three velocity terms on the right-hand side of (2.4), starting with the self-induced velocity $\mathbf{u}_I = u_{I,r}\mathbf{e}_r + u_{I,\theta}\mathbf{e}_\theta$, where \mathbf{e}_r and \mathbf{e}_θ are unit vectors in the radial and tangential directions, respectively. The radial $u_{I,r}$ and tangential $u_{I,\theta}$ components of the self-induced velocity at a given polar angle of θ are respectively given by

$$u_{I,r}(\theta, t) = \int_0^{2\pi} \frac{\gamma(\theta', t) \sin \alpha}{2\pi l} \xi' d\theta', \quad (2.5)$$

$$u_{I,\theta}(\theta, t) = \int_0^{2\pi} \frac{\gamma(\theta', t) \cos \alpha}{2\pi l} \xi' d\theta', \quad (2.6)$$

where l and α are defined in figure 1(a), θ' is a dummy integration variable, and $\xi' = \xi(\theta', t)$. According to the law of cosines, $l^2 = \xi^2 + \xi'^2 - 2\xi\xi' \cos(\theta' - \theta)$. The angle α shown in the figure 1(a) can be related to l based on the law of sines for the drawn triangle, which results in $\sin \alpha = (\xi'/l) \sin(\theta' - \theta)$. For small values of time t and yaw angle β , we can assume that the vortex sheet is approximately circular and, thus, $\xi \approx \xi'$. After some trigonometric manipulations, (2.5) and (2.6) can be simplified to

$$u_{I,r}(\theta, t) = p.v. \frac{1}{4\pi} \int_0^{2\pi} \frac{\gamma(\theta', t)}{\tan[(\theta' - \theta)/2]} d\theta', \quad (2.7)$$

$$u_{I,\theta}(\theta, t) = p.v. \frac{1}{4\pi} \int_0^{2\pi} \frac{\gamma(\theta', t) \sin[(\theta' - \theta)/2]}{\sin[(\theta' - \theta)/2]} d\theta' = \frac{1}{4\pi} \int_0^{2\pi} \gamma(\theta') d\theta'. \quad (2.8)$$

Both integrals in (2.7) and (2.8) have singularities at $\theta' = \theta$ and, thus, we use the Cauchy principal values of these two integrals. While the principal value (p.v.) of the latter can be simply obtained by removing $\sin[(\theta' - \theta)/2]$ from the numerator and the denominator, the p.v. of the former needs to be determined for a given $\gamma(\theta, t)$.

Next, we determine the velocity of the vortex sheet induced by the point vortex at C as shown in figure 1(b). We obtain

$$u_{II,r}(\theta, t) = 0, \quad (2.9)$$

$$u_{II,\theta}(\theta, t) = \frac{\Gamma_r}{2\pi\xi} = -\gamma_r. \quad (2.10)$$

Finally, we determine \mathbf{u}_C , which is the velocity of C induced by the vortex sheet, shown in figure 1(c). It can be readily shown that \mathbf{u}_C is given by

$$u_{C,r}(\theta, t) = \frac{1}{2\pi} \int_0^{2\pi} \gamma(\theta', t) \sin(\theta' - \theta) d\theta', \quad (2.11)$$

$$u_{C,\theta}(\theta, t) = -\frac{1}{2\pi} \int_0^{2\pi} \gamma(\theta', t) \cos(\theta' - \theta) d\theta'. \quad (2.12)$$

If we neglect streamwise (x -direction) straining, vorticity is a conserved quantity, so the vorticity transport equation for the vortex sheet strength $\gamma(\theta, t)$ provides the additional

required evolution equation (Moore 1978)

$$\frac{\partial \gamma}{\partial t} + \frac{\partial (\gamma u_s)}{\partial s} = 0, \tag{2.13}$$

where s is the arclength along the vortex sheet. At small values of time t and yaw angle β , the vortex sheet remains approximately circular, so u_s and ∂s can be respectively replaced with u_θ and $\xi \partial \theta$. Therefore, (2.13) is simplified to

$$\frac{\partial \gamma}{\partial t} + \frac{1}{\xi} \frac{\partial (\gamma u_\theta)}{\partial \theta} \approx 0. \tag{2.14}$$

Next, we use γ_b and ξ_0 to non-dimensionalise variables in (2.4) and (2.14). This leads to the following set of dimensionless equations:

$$\hat{u}_r(\theta, \hat{t}) \approx p.v. \frac{1}{4\pi} \int_0^{2\pi} \frac{\hat{\gamma}(\theta', \hat{t})}{\tan[(\theta' - \theta)/2]} d\theta' - \frac{1}{2\pi} \int_0^{2\pi} \hat{\gamma}(\theta', \hat{t}) \sin(\theta' - \theta) d\theta', \tag{2.15}$$

$$\hat{u}_\theta(\theta, \hat{t}) \approx \frac{1}{4\pi} \int_0^{2\pi} \hat{\gamma}(\theta') d\theta' + \frac{1}{2\pi} \int_0^{2\pi} \hat{\gamma}(\theta', \hat{t}) \cos(\theta' - \theta) d\theta' - \chi, \tag{2.16}$$

$$\frac{\partial \hat{\gamma}}{\partial \hat{t}} \approx -\frac{1}{\hat{\xi}} \frac{\partial (\hat{\gamma} \hat{u}_\theta)}{\partial \theta}. \tag{2.17}$$

Here $\hat{t} = t\gamma_b/\xi_0$, $\hat{u} = u/\gamma_b$, $\hat{\gamma} = \gamma/\gamma_b$, $\hat{\xi} = \xi/\xi_0$ and $\chi = \gamma_r/\gamma_b$. Note that the dimensionless time \hat{t} becomes negative for negative values of γ_b . In the following, we solve (2.15)–(2.17) using the power series method.

2.2. Analytical solution using power series approximation

We write $\hat{\gamma}(\theta, \hat{t})$, $\hat{u}_r(\theta, \hat{t})$ and $\hat{u}_\theta(\theta, \hat{t})$ as power series in the form of

$$\hat{\gamma}(\theta, \hat{t}) = \sum_{n=0}^{\infty} \hat{\gamma}_n(\theta) \hat{t}^n; \quad \hat{u}_r(\theta, \hat{t}) = \sum_{n=0}^{\infty} \hat{u}_{rn}(\theta) \hat{t}^n, \quad \hat{u}_\theta(\theta, \hat{t}) = \sum_{n=0}^{\infty} \hat{u}_{\theta n}(\theta) \hat{t}^n. \tag{2.18a-c}$$

According to (2.1), for $\hat{\xi}$ and the factor $1/\hat{\xi}$ in (2.17), we have

$$\hat{\xi} = 1 + \int \hat{u}_r d\hat{t} = 1 + \sum_{n=0}^{\infty} \frac{1}{n+1} \hat{u}_{rn} \hat{t}^{n+1}, \tag{2.19}$$

$$\frac{1}{\hat{\xi}} = \sum_{n=0}^{\infty} f_n(\theta) \hat{t}^n, \tag{2.20}$$

where f_n s are Taylor series expansion coefficients of $1/\hat{\xi}$. For example, the first three coefficients, which are used in the final solution of this paper, can be shown to be $f_0 = 1$, $f_1 = -\hat{u}_{r0}$ and $f_2 = \hat{u}_{r0}^2 - \frac{1}{2} \hat{u}_{r1}$. We insert the power series (2.18a-c) and (2.20) into

(2.15)–(2.17) and equating coefficients we obtain

$$\hat{u}_{rn}(\theta) \approx p.v. \frac{1}{4\pi} \int_0^{2\pi} \frac{\hat{\gamma}_n(\theta')}{\tan[(\theta' - \theta)/2]} d\theta' - \frac{1}{2\pi} \int_0^{2\pi} \hat{\gamma}_n(\theta') \sin(\theta' - \theta) d\theta', \quad (2.21)$$

$$\hat{u}_{\theta n}(\theta) \approx \frac{1}{4\pi} \int_0^{2\pi} \hat{\gamma}_n(\theta') d\theta' + \frac{1}{2\pi} \int_0^{2\pi} \hat{\gamma}_n(\theta') \cos(\theta' - \theta) d\theta' - \begin{cases} \chi, & \text{if } n = 0, \\ 0, & \text{if } n > 0, \end{cases} \quad (2.22)$$

$$\hat{\gamma}_{n+1} \approx -\frac{1}{(n+1)} \left(\sum_{j=0}^n f_j \sum_{i=0}^{n-j} \frac{\partial(\hat{\gamma}_i \hat{u}_{\theta(n-j-i)})}{\partial \theta} \right). \quad (2.23)$$

The first term on the right-hand side of (2.21) is a Cauchy p.v. of an improper integral. The following identities are useful to solve this integral:

$$p.v. \int_0^{2\pi} \frac{\sin nx}{\tan[(x-b)/2]} dx = 2\pi \cos nb, \quad (2.24)$$

$$p.v. \int_0^{2\pi} \frac{\cos mx}{\tan[(x-b)/2]} dx = -2\pi \sin mb. \quad (2.25)$$

Here $n \in \{1, 2, \dots\}$, $m \in \{0, 1, 2, \dots\}$ and $b \in [0, 2\pi]$. The complete derivation of these integrals can be found in the [Appendix A](#).

From (2.2), $\hat{\gamma}_0(\theta) = \sin \theta + \chi$. One can insert $\hat{\gamma}_0$ into (2.21) and (2.22) to respectively find $\hat{u}_{r0}(\theta)$ and $\hat{u}_{\theta0}(\theta)$. Values of $\hat{u}_{r0}(\theta)$, $\hat{u}_{\theta0}(\theta)$ and f_0 can be then inserted into (2.23) to find $\hat{\gamma}_1(\theta)$. This recursive process is repeated until reaching the desired order of evaluation for the power series of (2.18a–c). After $\hat{u}_r(\theta, \hat{t})$ is obtained using the developed recursive relations, the dimensionless shape of the vortex sheet $\hat{\xi}(\theta, \hat{t})$ is evaluated from (2.19). The solutions for $\hat{\gamma}$, \hat{u}_r and \hat{u}_θ up to $O(\hat{t}^3)$ and for $\hat{\xi}$ up to $O(\hat{t}^4)$ are written below,

$$\begin{aligned} \hat{\gamma}(\theta, \hat{t}) = & \sin(\theta) + \chi - \frac{1}{2} \hat{t} \sin(2\theta) + \hat{t}^2 \left(-\frac{1}{4} \chi \cos(2\theta) + \frac{3}{16} \sin(3\theta) - \frac{\sin(\theta)}{16} \right) \\ & + \hat{t}^3 \left(\frac{1}{12} \chi^2 \sin(2\theta) - \frac{1}{48} \chi \cos(\theta) + \frac{5}{32} \chi \cos(3\theta) \right. \\ & \left. + \frac{5}{96} \sin(2\theta) - \frac{7}{96} \sin(4\theta) \right), \end{aligned} \quad (2.26)$$

$$\begin{aligned} \hat{u}_r(\theta, \hat{t}) = & -\frac{1}{4} \hat{t} \cos(2\theta) + \hat{t}^2 \left(\frac{1}{8} \chi \sin(2\theta) + \frac{3}{32} \cos(3\theta) \right) \\ & + \hat{t}^3 \left(\frac{1}{24} \chi^2 \cos(2\theta) - \frac{5}{64} \chi \sin(3\theta) + \frac{5}{192} \cos(2\theta) - \frac{7}{192} \cos(4\theta) \right), \end{aligned} \quad (2.27)$$

$$\hat{u}_\theta(\theta, \hat{t}) = \frac{1}{2} \sin(\theta) - \frac{1}{2} \chi - \frac{1}{32} \hat{t}^2 \sin(\theta) - \frac{1}{96} \hat{t}^3 \chi \cos(\theta), \quad (2.28)$$

$$\begin{aligned} \hat{\xi}(\theta, \hat{t}) = & 1 - \frac{1}{8} \hat{t}^2 \cos(2\theta) + \hat{t}^3 \left(\frac{1}{24} \chi \sin(2\theta) + \frac{1}{32} \cos(3\theta) \right) \\ & + \hat{t}^4 \left(\frac{1}{96} \chi^2 \cos(2\theta) - \frac{5}{256} \chi \sin(3\theta) + \frac{5}{768} \cos(2\theta) - \frac{7}{768} \cos(4\theta) \right). \end{aligned} \quad (2.29)$$

One can compute higher-order terms of (2.26)–(2.29), which may become relevant at increasing values of \hat{t} . However, since the above solution is developed based on the assumption that the vortex sheet remains approximately circular, increasing deformation of the vortex sheet makes the solution inaccurate at large values of \hat{t} . For practical applications at large \hat{t} , in Appendix B we propose an empirical formula that merges smoothly with the theoretical expression at small \hat{t} (i.e. $|\hat{t}| \leq 2$), while it has desired reasonable properties at large times (i.e. $|\hat{t}| > 2$). In the next section we prove the validity of the initial conditions in (2.2) and (2.3). Moreover, values of ξ_0 , γ_b and γ_r are determined as functions of turbine operating conditions.

2.3. Setting vortex sheet initial conditions at yawed turbine location

In this section we determine the vorticity shedding from a yawed rotor disk (i.e. $\gamma_0(\theta) = \gamma(\theta, 0)$). According to the Kutta–Joukowski theorem, lift force is proportional to the amount of circulation around a lifting airfoil. This means that an airfoil can be replaced with a bound vortex. Also, for any airfoil with finite span, free vortices must trail downstream from both sides of the bound vortex to infinity, forming a horseshoe vortex (Anderson 2011). Turbine blades rotate and produce power due to their generated lift force, and vorticity is shed from the root and the tip of rotor blades. In addition, the whole yawed rotor can be assumed as a big finite-span airfoil with the lateral component of the thrust force regarded as the lift force. Therefore, in order to find the total shedding vorticity at the rotor disk, we need to determine those due to both yaw offset and rotating blades. In the following, we assume that the yawed rotor can be modelled as a rotating actuator disk.

2.3.1. Vorticity shedding due to turbine yaw

Prior studies have suggested two different approaches to model the distribution of circulation at a yawed disk. By modelling a yawed disk as a lifting line, the circulation is concentrated on a vertical line at the centre of the rotor with an elliptical distribution spanning from the bottom tip to the top tip of the rotor (Shapiro *et al.* 2018). Alternatively, vorticity due to yaw offset can be assumed to shed from the circumference of the rotor (Zong & Porté-Agel 2020). Martinez-Tossas & Branlard (2020) used vortex cylinder theory to state the equivalency of these two methods. Shapiro *et al.* (2020) proved that both vorticity distributions yield the same induced velocity inside the radius of the rotor disk. To determine the reference circulation density γ_b needed in (2.2) and to provide more physical insight, we build upon the literature to show that the equivalency of these two vorticity distributions can be also verified simply by rearranging the position of horseshoe vortices over a yawed disk.

Figure 2(a) shows a schematic of a yawed actuator disk modelled as a lifting surface with a constant vortex strength of γ_b in the \bar{z} -direction. The coordinate system $(\bar{x}, \bar{y}, \bar{z})$ is defined based on the rotor plane as shown in figure 2(c), and its respective polar coordinate

Vortex sheet model of curled wakes from yawed wind turbines

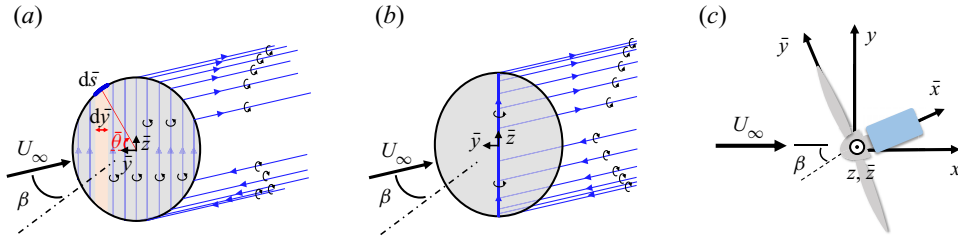


Figure 2. Vorticity shedding from a yawed actuator disk, modelled (a) as a lifting surface, and (b) as a lifting line. (c) A schematic of different coordinate systems used in this paper.

system $(\bar{r}, \bar{\theta})$ is defined such that $\bar{r} = \sqrt{\bar{y}^2 + \bar{z}^2}$ and $\tan \bar{\theta} = \bar{z}/\bar{y}$. The lifting surface shown in figure 2(a) can be envisaged as a surface with an infinite number of horseshoe vortices uniformly distributed across the yawed disk. The bound circulation at a given vertical position z is given by

$$\Gamma(\bar{z}) = \int_{-\sqrt{R^2 - \bar{z}^2}}^{\sqrt{R^2 - \bar{z}^2}} \gamma_b d\bar{y} = 2\gamma_b \sqrt{R^2 - \bar{z}^2}, \quad (2.30)$$

where R is the rotor radius. Note that according to (2.30), the vertical distribution of the bound circulation for the lifting surface with a constant vortex strength γ_b is elliptical. This means that if we concentrate all these horseshoe vortices on a vertical line at the centre of the disk, the lifting surface is transformed to a lifting line with an elliptical distribution of circulation, like the one used by Shapiro *et al.* (2018), as shown in figure 2(b). In this case, trailing vortices shed from all along the lifting line, because it consists of horseshoe vortices that vary in size. From (2.30), the maximum value of bound circulation for the lifting line, denoted by Γ_b , occurs at $\bar{z} = 0$, and its value is equal to $2R\gamma_b$. From the lifting line theory, we know that $\Gamma_b = -U_h C_T R \cos^2 \beta \sin \beta$ (Shapiro *et al.* 2018), where C_T is the turbine thrust coefficient. The value of C_T is given by

$$C_T = \frac{2T}{\rho \pi R^2 U_h^2 \cos^2 \beta}, \quad (2.31)$$

where T is the total magnitude of the turbine thrust force, ρ is the air density and U_h is the inflow velocity at the hub height. Note that this definition is the same as the one used in Shapiro *et al.* (2018), but it is different from the one used in some other prior studies (e.g. Burton *et al.* 1995; Bastankhah & Porté-Agel 2016). Since $\gamma_b = \Gamma_b/2R$, the value of γ_b is given by

$$\gamma_b = -\frac{1}{2} U_h C_T \cos^2 \beta \sin \beta. \quad (2.32)$$

Next, we determine the distribution of trailing vortices shedding from the circumference of the lifting surface. The circulation of the vortex shedding from an infinitesimal circumferential element ds , where $d\bar{s} = R d\bar{\theta}$, is $d\Gamma_{shed,yaw} = \gamma_b d\bar{y}$. Given that $d\bar{y} = d\bar{s} \sin \bar{\theta}$, we obtain

$$d\Gamma_{shed,yaw} = \gamma_b \sin \bar{\theta} d\bar{s}. \quad (2.33)$$

For the lifting line, on the other hand, the magnitude of circulation of trailing vortex over the segment $d\bar{z}$ is equal to $-(d\Gamma/d\bar{z}) d\bar{z}$ (Anderson 2011). From (2.30) and $\Gamma_b = 2R\gamma_b$,

we obtain

$$d\Gamma_{shed,yaw} = \frac{\Gamma_b \bar{z} d\bar{z}}{R\sqrt{R^2 - \bar{z}^2}}. \quad (2.34)$$

Using the variable change $\bar{z} = R \sin \bar{\theta}$, one can easily show that $d\Gamma_{shed}$ for the lifting surface at any $\bar{\theta}$ (2.33) is half of that of the lifting line (2.34) at the respective height \bar{z} . Note that for the lifting surface, at a given height, trailing vortices shed at both angles of $\bar{\theta}$ and $(\pi - \bar{\theta})$ with the same magnitude of circulation. Therefore, trailing vortices shedding from the lifting line and the lifting surface vary with height in a similar manner. It is also worth mentioning that the results presented here are in agreement with those obtained from the skewed vortex cylinder theory (Coleman *et al.* 1945; Branlard & Gaunaa 2016). By modelling a yawed turbine wake as a skewed vortex cylinder, Martinez-Tossas & Branlard (2020) stated that the dominant vorticity shedding from the rotor is the tangential vorticity vector, which lies in the rotor plane. The streamwise projection of this tangential vorticity is equal to the one found in the present work (2.33) (c.f. (9) in Martinez-Tossas & Branlard 2020).

2.3.2. Inclusion of wake angular momentum effects

In this section we determine the value of γ_r required in (2.2) and (2.3). Based on the method of Joukowski that models a turbine blade as one single horseshoe vortex with constant bound circulation (see Okulov & Van Kuik (2012) for historical background), two free trailing vortices with the same magnitude of circulation are shed from both root and tip ends of each turbine blade. Under the assumption of a large number of blades, this creates a vortex system consisting of a bound vortex disk, an axial root vortex and a tubular vortex sheet as shown in figure 3(a). Let us denote the circulation of the root trailing vortex with Γ_r . As the amount of circulation along any horseshoe vortice remains constant, the bound circulation on the rotor disk at any radial position should be the same as Γ_r . According to the Kutta–Joukowski theorem, the bound circulation over an annular ring at a radial position \bar{r} and thickness of $d\bar{r}$ on the rotor disk generates a lift force dL , which amounts to (Okulov & Sørensen 2010)

$$dL = \rho V_0 \times e_r \Gamma_r d\bar{r}, \quad (2.35)$$

where V_0 is the resultant relative wind velocity experienced by the blade element as shown in figure 3(b). In this figure, ϕ denotes the angle between V_0 and $\bar{\theta}$ -direction, and U_d is the component of V_0 in the \bar{x} -direction. The tangential component of dL produces power P , which is given by

$$dP = \Omega dQ = \rho \Omega \Gamma_r U_d \bar{r} d\bar{r}, \quad (2.36)$$

where Ω is the turbine rotational velocity and dQ is the torque generated by the given annular ring. From the axial momentum theory, the power generated by the annular ring can be written as the product of U_d and dT , where dT is the thrust force exerted on the annular ring. Therefore, we obtain an additional equation for dP as

$$dP = U_d dT = \rho U_d U_\infty^2 C_T \cos^2 \beta(\pi\bar{r}) d\bar{r}. \quad (2.37)$$

Note that to derive (2.37), the local thrust coefficient for a given annular ring is assumed to be the same as its value for the whole rotor defined in (2.31). This is a correct assumption for the Joukowski vortex model (Van Kuik, Sørensen & Okulov 2015). Equating (2.36)

Vortex sheet model of curled wakes from yawed wind turbines

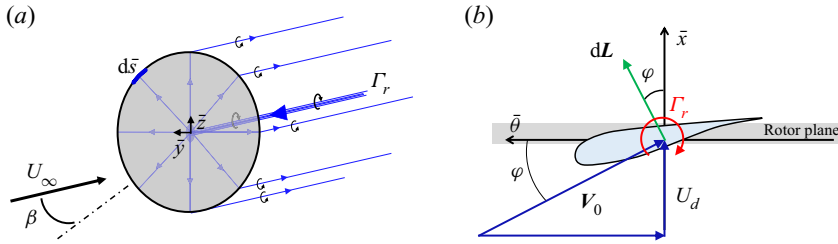


Figure 3. (a) Modelling a turbine rotor as a rotating actuator disk. (b) The velocity triangle for a rotor blade element.

and (2.37) leads to

$$\Gamma_r = \frac{\pi R}{\lambda} U_h C_T \cos^2 \beta, \quad (2.38)$$

where λ is the tip-speed ratio and defined as $\Omega R/U_h$.

As seen in figure 3(a), the trailing vorticity sheds over the circumference of the rotor disk. It is evident that the value of circulation for the vorticity shedding over the circumferential element $d\bar{s}$ is given by

$$d\Gamma_{shed,rot} = \gamma_r d\bar{s}, \quad (2.39)$$

where $\gamma_r = -\Gamma_r/(2\pi R)$. The variable γ_r denotes the strength of the shedding tubular vortex sheet, and from (2.38),

$$\gamma_r = -\frac{1}{2\lambda} U_h C_T \cos^2 \beta. \quad (2.40)$$

It is important to note that as discussed by Branlard & Gaunaa (2016), the above-mentioned shedding vortices are actually in the direction of the wake centreline axis that forms an angle with the streamwise coordinate x . Prior studies (e.g. Coleman *et al.* 1945) however showed that the angle between the wake centreline and the x -coordinate is expected to be much smaller than the turbine yaw angle. Therefore, we assume that both axial root and tip shedding vortices are in the x -direction for simplicity.

2.3.3. Total vorticity shedding from a yawed turbine

From findings of §§ 2.3.1 and 2.3.2, we can determine the total vorticity shedding from a yawed rotor due to both yaw offset and rotating blades as a function of turbine operating conditions. From (2.33) and (2.39), the value of the dimensionless initial vortex strength $\hat{\gamma}_0$ in the (r, θ) polar coordinate system is given by

$$\hat{\gamma}_0(\theta) = \frac{\gamma_0}{\gamma_b} = \sin \theta + \chi \quad \text{at } r = \xi_0, \quad (2.41)$$

where from (2.32) and (2.40),

$$\chi = \frac{\gamma_r}{\gamma_b} = \frac{1}{\lambda \sin \beta}. \quad (2.42)$$

The variable χ , called the rotation rate, is the ratio of the strength of vortex generation due to rotating blades to the one generated due to yaw offset. For the limiting cases of $\lambda = \pm\infty$, χ is equal to zero, and the shedding vorticity is only due to the yaw offset. As the tip-speed ratio λ goes to infinity, the amount of torque generated by the turbine goes

to zero. Therefore, according to the conservation of angular momentum, there should be no wake rotation downwind of the actuator disk in the limiting cases of $\lambda = \pm\infty$. Hereafter, the term non-rotating wake refers to the wake of an actuator disk with an infinite tip-speed ratio λ , while rotating wake refers to the wake of an actuator disk with a finite value of λ .

2.3.4. Initial shape of the vortex sheet

The vortex sheet sheds from the circumference of the rotor, so it initially has a shape similar to the projected frontal area of the yawed disk, which is an ellipse with a semi-major axis of R in the z -direction, and a semi-minor axis of $R \cos \beta$ in the y -direction. The disk-averaged velocity normal to the rotor U_d is equal to $U_\infty \cos \beta (1 - a)$, where a is the turbine induction factor, and it is given by $0.5(1 - \sqrt{1 - C_T \cos^2 \beta})$ (Burton *et al.* 1995). Behind the turbine, the rotor streamtube area expands further as pressure recovers to the background value (Manwell, McGowan & Rogers 2010). At this location, the streamwise velocity is given by $U_\infty(1 - 2a)$ (Bastankhah & Porté-Agel 2016; Shapiro *et al.* 2018). From continuity, A_* , the ratio of the expanded streamtube area to the projected frontal area of the rotor is therefore given by

$$A_* = \frac{(1 - a) \cos \beta}{1 - 2a} \frac{1}{\cos \beta} = \frac{1 + \sqrt{1 - C_T \cos^2 \beta}}{2\sqrt{1 - C_T \cos^2 \beta}}. \quad (2.43)$$

Neglecting the distance between the rotor and the end of the streamtube expansion, we set the initial wake area enclosed by the vortex sheet at $t = 0$ to be the projected frontal area of the rotor times A_* . Therefore, $\xi_0(\theta)$ has an elliptical shape expressed by

$$\xi_0(\theta) = R\sqrt{A_*} \frac{|\cos \beta|}{\sqrt{1 - \sin^2 \beta \sin^2 \theta}}. \quad (2.44)$$

For a small yaw angle β , the vortex sheet initially has an approximately circular shape. Therefore, one can approximate ξ_0 with $\tilde{\xi}_0$ given by

$$\tilde{\xi}_0 \approx R\sqrt{A_*}. \quad (2.45)$$

2.4. Vortex sheet lateral deflection

The analytical solutions of the vortex sheet shape developed earlier are represented in the (r, θ) polar coordinate system, which is attached to the vortex sheet centre C . Therefore, in order to fully determine the locus of the vortex sheet with respect to a stationary coordinate system, we also need to compute how y_c and z_c vary with time or downstream distance (i.e. wake deflection). From figure 1(c), the Kutta–Joukowski theorem can be used to obtain

$$\hat{y}_c = \frac{1}{2\pi} \int_0^{\hat{t}} \int_0^{2\pi} \hat{\gamma}(\theta', \hat{t}) \sin \theta' d\theta' d\hat{t}, \quad (2.46)$$

$$\hat{z}_c = \frac{-1}{2\pi} \int_0^{\hat{t}} \int_0^{2\pi} \hat{\gamma}(\theta', \hat{t}) \cos \theta' d\theta' d\hat{t}, \quad (2.47)$$

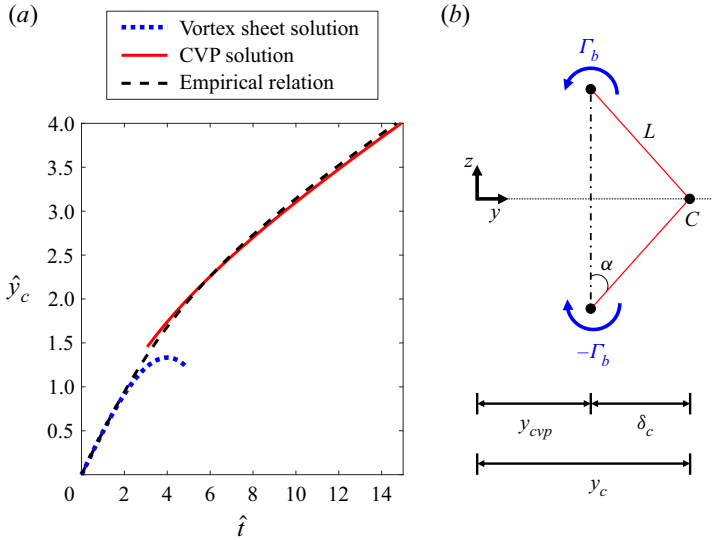


Figure 4. (a) Lateral deflection of the vortex sheet centre y_c based on modelling the shed vorticity either as an approximately circular vortex sheet (2.48) or a CVP (2.53). The empirical relation (2.55) provides predictions similar to the former approach at small \hat{t} , while it tends to the latter solution at large times. (b) Schematic of modelling the CVP shedding from a yawed rotor.

where $\hat{y}_c = y_c/\xi_0$ and $\hat{z}_c = z_c/\xi_0$. Inserting $\hat{y}(\theta, \hat{t})$ from (2.26) into (2.46) and (2.47) and performing the integration lead to

$$\hat{y}_c = \frac{\hat{t}}{2} - \frac{\hat{t}^3}{96}, \tag{2.48}$$

$$\hat{z}_c = \frac{\chi \hat{t}^4}{384}. \tag{2.49}$$

From (2.49), the vertical displacement of C is zero when $\chi = 0$ (i.e. actuator disks with non-rotating wake) as expected from symmetry and consistent with prior experimental and numerical works (e.g. Bastankhah & Porté-Agel 2016; Howland *et al.* 2016; Bartl *et al.* 2018). Comparison of (2.48) and (2.49) for non-zero values of χ shows that \hat{z}_c is non-zero but still considerably smaller than \hat{y}_c for small values of \hat{t} . Therefore, we neglect \hat{z}_c in this work for simplicity.

It is worth remembering that to derive the analytical solution for the deformation of the vortex sheet, we assumed that the shape of the vortex sheet does not largely deviate from a circle. Although this is an acceptable assumption for small values of yaw angle and time, it is less accurate for large values of time, when the vortex sheet rolls up and forms a CVP. As shown in figure 4(a), based on (2.48), the value of \hat{y}_c may even decrease with an increase of \hat{t} , which is clearly unphysical. Since we expect that at large times (or downstream distances) a CVP can more realistically represent the vorticity shedding from the yawed rotor, we enhance our model for \hat{y}_c so that at large distances it tends to the situation of a CVP instead of using the truncated series vortex sheet solution.

Figure 4(b) shows a schematic of a CVP. The CVP has the circulation of Γ_b (Shapiro *et al.* 2018) as shown in figure 4(b). The lateral position of the CVP is denoted by y_{cvp} , and the lateral distance between the wake centre C and the CVP is denoted by δ_c in the figure. The vertical spacing between counter-rotating vortices is equal to $2\xi_0$ and it is assumed to

remain constant. Initial values of y_c , y_{cvp} and δ_c are zero. In this analysis, only the vorticity shed due to the yaw offset is considered as the effect of shed vorticity due to rotating blades on the wake deflection is expected to be small. Our objective is to find the variation of y_c with time (or downstream distance), but let us first determine how δ_c varies with time. According to the Biot–Savart law,

$$v_c = \frac{2\Gamma_b}{2\pi L} \cos \alpha = \frac{\Gamma_b \xi_0}{\pi (\xi_0^2 + \delta_c^2)}, \tag{2.50}$$

where v_c is the lateral velocity of C induced by the CVP, and L and α are defined in figure 4(b). The CVP also moves with a lateral velocity of $v_{cvp} = \Gamma_b / (4\pi \xi_0)$ due to its self-induced velocity. Therefore, one can write

$$\frac{d\delta_c}{dt} = v_c - v_{cvp} = \frac{\Gamma_b \xi_0}{\pi (\xi_0^2 + \delta_c^2)} - \frac{\Gamma_b}{4\pi \xi_0} = \frac{\Gamma_b}{4\pi \xi_0} \left(\frac{3\xi_0^2 - \delta_c^2}{\xi_0^2 + \delta_c^2} \right). \tag{2.51}$$

It is interesting to note that, according to (2.51), δ_c increases until δ_c approaches $\sqrt{3}\xi_0$. At this time $v_c = v_{cvp}$ and, therefore, the relative position of C with respect to the CVP does not change anymore, and δ_c remains equal to $\sqrt{3}\xi_0$ afterwards.

Next, we approximate $\Gamma_b \approx 2\xi_0\gamma_b$ in (2.51). We then integrate (2.51) (with separation of variables, δ_c and t) and write the solution in the dimensionless form. This yields an implicit expression for $\hat{\delta}_c(\hat{t})$ (it will be later expressed explicitly using an empirical formula),

$$\frac{\hat{t}}{2\pi} = \frac{-2}{\sqrt{3}} \ln \left(\frac{\sqrt{3} - \hat{\delta}_c}{\sqrt{3} + \hat{\delta}_c} \right) - \hat{\delta}_c, \tag{2.52}$$

where $\hat{\delta}_c = \delta_c / \xi_0$. Note that to derive (2.52), we assume that $\hat{\delta}_c < \sqrt{3}$. Given that $\hat{y}_c = \hat{\delta}_c + \hat{y}_{cvp}$, we have

$$\hat{y}_c = \hat{\delta}_c + \frac{\hat{t}}{2\pi}. \tag{2.53}$$

Predictions of \hat{y}_c based on modelling the vortex sheet as a CVP using (2.52) and (2.53) are shown in figure 4(a). As discussed earlier, the solution for \hat{y}_c based on the CVP is expected to provide acceptable predictions at large values of \hat{t} , while the solution based on an approximately circular vortex sheet (2.48) works better at short values of \hat{t} . An empirical formula that merges these two behaviours to leading order in both limits can be written as

$$\hat{y}_c = \frac{c_1|\hat{t}|^3 + c_2\hat{t}^2 + c_3|\hat{t}|}{c_4\hat{t}^2 + c_5|\hat{t}| + c_6} \text{sgn}(\hat{t}), \tag{2.54}$$

where $\text{sgn}(x)$ is the sign function of x , and c_1, \dots, c_6 are polynomial coefficients, which need to be determined. Note that, similar to the vortex sheet and CVP solutions, the empirical relation is an odd function, so the wake deflection is opposite for turbines with opposite yaw angles. To find suitable values of polynomial coefficients (c_1, \dots, c_6), we match the series expansion of (2.54) at $\hat{t} \rightarrow 0$ and $\hat{t} \rightarrow \infty$ with $\hat{t}/2 - \hat{t}^3/96$ and $\hat{t}/(2\pi) + \sqrt{3}$, respectively. This leads to a system of equations that needs to be solved. So we obtain

$$\hat{y}_c = \frac{(\pi - 1)|\hat{t}|^3 + 2\sqrt{3}\pi^2\hat{t}^2 + 48(\pi - 1)^2|\hat{t}|}{2\pi(\pi - 1)\hat{t}^2 + 4\sqrt{3}\pi^2|\hat{t}| + 96(\pi - 1)^2} \text{sgn}(\hat{t}). \tag{2.55}$$

Equation (2.55) provides predictions similar to (2.48) at small values of \hat{t} and approaches (2.53) at large values of \hat{t} as shown in figure 4(a).

2.5. Comparison with numerical simulations

In this section we compare predictions of the vortex sheet (i.e. wake edge) shape $\xi(\theta, t)$ based on the new proposed model with numerical simulation data. For simulations, the pseudo-spectral LES code LESGO is applied. The LESGO code has been used in prior works (Calaf, Meneveau & Meyers 2010; Stevens, Graham & Meneveau 2014; VerHulst & Meneveau 2015; Martínez-Tossas *et al.* 2018; Shapiro *et al.* 2018; Stevens, Martínez-Tossas & Meneveau 2018) to simulate flow past wind turbines and wind farms. It has been validated by detailed comparisons with several other LES codes (Martínez-Tossas *et al.* 2018). Turbines are simulated using the actuator disk model with rotation (ADM-R). See the Appendix C for more information about the LESGO code and the LES set-up of this study. Under uniform inflow conditions the role of turbulence is minimal, and the code runs mostly as an inviscid solver with regularization, as it was also used in Shapiro *et al.* (2018). Simulations are performed for a range of local thrust coefficients $C'_T = 0.8, 1.0$ and 1.33 , yaw angles $\beta = 10^\circ, 20^\circ$ and 30° , and rotation rates $\chi = 0, 0.25$ and 0.5 . Note that according to (2.32) this means that γ_b and \hat{t} are negative and the curling is expected to be in the opposite direction of that shown in the sketch in figure 1, i.e. in the LES the wake is being deflected in the negative y -direction. Also, it is worth remembering that the rotation rate χ depends on both yaw angle β and tip-speed ratio λ . According to (2.42), for a utility-scale wind turbine with a tip-speed ratio $\lambda = 8$ and yaw angle $\beta = 15^\circ$ – 30° , rotation rate χ varies between 0.25 – 0.5 . The non-rotating case commonly used in the LES corresponds to an infinite tip-speed ratio and reduces to the standard actuator disk model (ADM) without rotation. The local thrust coefficient C'_T is related to the thrust coefficient C_T through $C_T = 16C'_T/(4 + C'_T \cos^2 \beta)^2$ (Shapiro *et al.* 2018). A fringe forcing region is used to force the flow back to laminar inflow when using periodic boundary conditions in the x -direction. Excluding this fringe region the effective domain has sides that are $L_x = 15.12D$, $L_y = 5.76D$ and $L_z = 5.76D$ long. A uniform grid with $N_x = 384$ effective grid points in the streamwise direction and $N_y = N_z = 192$ grid points in the spanwise and vertical directions are used. The centre of the actuator disk is placed $3.6D$ from the inlet of the domain.

In order to determine the shape of the wake edge based on the developed model, we need to first compute the value of $\hat{t} = \gamma_b t / \xi_0$, where ξ_0 can be approximated with $\tilde{\xi}_0$ (2.45) and $t = x / U_{con}$. Although the convection velocity U_{con} in turbine wakes changes with the streamwise distance, it is approximated with a constant value in this study, as done in prior studies (e.g. Shapiro *et al.* 2020). For cases with no incoming turbulence, the turbine wake does not significantly interact with the surrounding flow, and it experiences a slow recovery. In this case, the streamwise velocity profile in the central part of the wake can be modelled as a top-hat core (i.e. potential core) with a constant velocity U_0 equal to $U_{in} \sqrt{1 - C_T \cos^2 \beta}$ (Bastankhah & Porté-Agel 2016; Shapiro *et al.* 2018), where U_{in} is the incoming velocity. The top-hat core is surrounded by a shear layer in which the velocity changes from U_0 to U_{in} . Therefore, we approximate the convection velocity with $U_{con} = 0.5(U_0 + U_{in})$. For instance, based on this definition, $|\hat{t}| = 2$ (i.e. limiting value for using the analytical model) corresponds to a streamwise distance in the range of $12R - 29R$ for a turbine with $C'_T = 1.33$ (i.e. $C_T \approx 0.75$ for $\beta = 0$), and $\beta = 30^\circ$ – 10° .

The analysis presented in § 2 suggests that the wake shape, non-dimensionalised by $\xi_0(\theta)$, only depends on the dimensionless time \hat{t} , and the rotation rate $\chi = 1/\lambda \sin \beta$. As a first test of the model, we compare the dimensionless model predictions with LES results normalised such that they can be presented as function of \hat{t} and χ . For the LES data, the edges of the wake are identified by tracking the edge of the streamtube that passes through

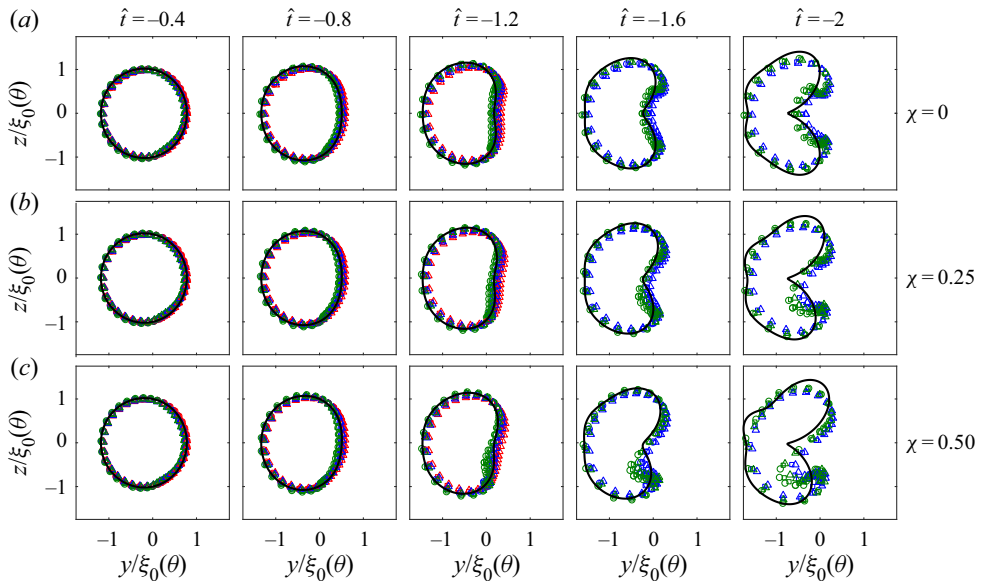


Figure 5. Dimensionless shape of the wake of yawed wind turbines in uniform inflow for $C_T = 0.8$ (\circ), $C_T = 1$ (\square) and $C_T = 1.33$ (Δ) and yaw angles $\beta = 10^\circ$ (red), $\beta = 20^\circ$ (blue), $\beta = 30^\circ$ (green) at various evolution times \hat{t} and rotation rates χ . The analytical model (black solid line) is shown for comparison. Note that results of $\beta = 10^\circ$ are not shown for $\hat{t} = -1.6$ and -2.0 because for this yaw angle they correspond to downwind distances that exceed the computational domain.

the face of the actuator disk which is appropriate in this case due to the lack of turbulent mixing. Results are shown in figure 5, which shows that the LES data for turbines with different operating conditions approximately collapse onto the same wake profile curve for given values of \hat{t} and χ , in agreement with the proposed theory. The figure also shows that the proposed analytical model is able to capture the scaled wake shape. At larger time magnitudes and large rotation rates some discrepancies appear, especially in the bottom right quadrant. The governing equations are developed by assuming small deviations of the vortex sheet from its initial shape. In addition, a severely truncated series expansion is used to solve governing equations. Therefore, the model cannot fully capture the vortex roll-up and transition of the vortex sheet to a CVP at large times, and some discrepancies are noticeable. For non-zero values of rotation rate, an additional level of vorticity γ_r sheds from the rotor circumference due to blade rotation. Given the sinusoidal nature of vorticity due to yaw offset (2.33), the additional shedding vorticity due to rotation increases the vorticity magnitude on either bottom or top halves of the wake (e.g. bottom half for the data shown in figure 5), which in turn accelerates the vortex roll-up. At larger values of rotation rate, discrepancy is thus expected to be higher due to the earlier occurrence of vortex roll-up. This is confirmed in figure 5 by comparing model predictions at the same dimensionless time (e.g. $\hat{t} = -1.6$), but different values of rotation rate.

Next, we expand the comparison and plot the results in terms of physical parameters that are more directly related to the flow configuration: downstream distance x/R , local thrust coefficient C_T , yaw angle β and dimensionless rotation rate χ . Figure 6 shows wake edge predictions of the analytical model together with the LES data for different values of C_T , β and χ , at several downwind locations. The figure shows that the degree of wake curling increases with yaw angle, thrust coefficient and streamwise distance, as expected from the analysis presented in § 2. Moreover, wake rotation breaks the vertical symmetry of

Vortex sheet model of curled wakes from yawed wind turbines

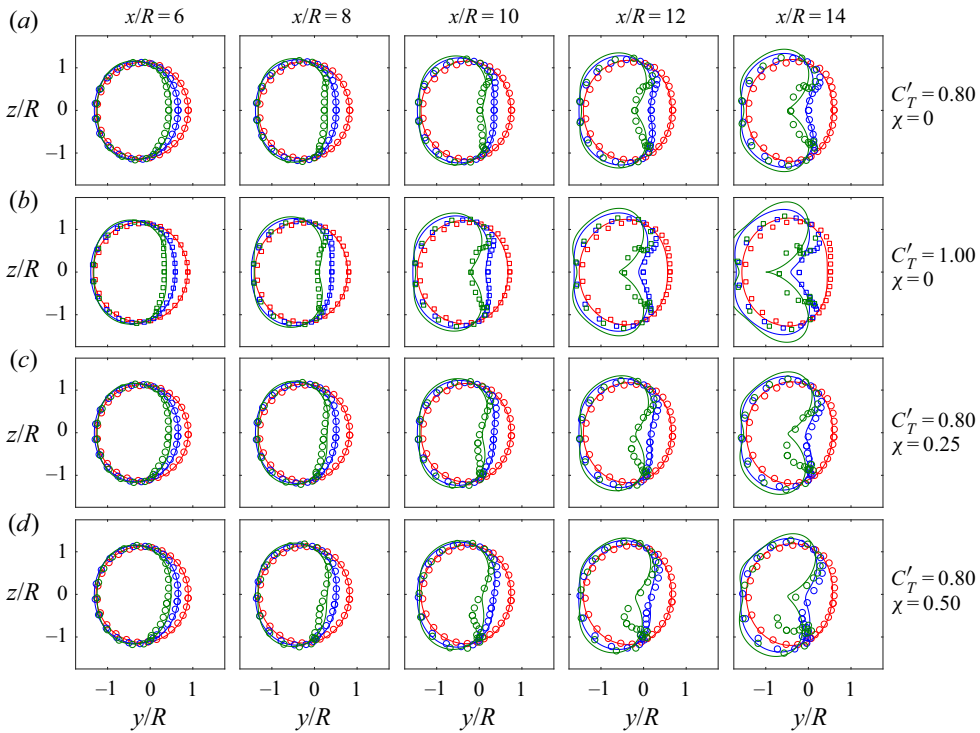


Figure 6. Wake of yawed wind turbines in uniform inflow for yaw angles $\beta = 10^\circ$ (red), $\beta = 20^\circ$ (blue), $\beta = 30^\circ$ (green) at various downstream locations x/R and rotation rates χ . Large-eddy simulation measurements are shown with symbols and modelled wake locations are shown with solid lines.

the wake. The results presented in [figure 6](#) show that the wake shape depends strongly on all of the varied parameters: thrust coefficient, yaw angle and rotation rate. The analytical model developed is seen to agree well with the LES results, up to intermediate levels of wake curling. The analytical model successfully predicts the shape of the wake for various operating conditions. As the wake deformation grows further downstream or at increasing C_T' , differences appear, as mentioned before due to the limitations of the model that is based on a severely truncated series expansion. It is clear that there is reduced agreement in the lower half of the wake for cases with large values of yaw angle and rotation rate. As discussed earlier, for these cases, the lower half of the wake cross-section is subject to a strong vortex roll-up caused by the cumulative vorticity due to both yaw offset and rotation. Still, the model is able to predict many qualitative features of the wake shape, including its vertical asymmetry for cases with rotation. In addition, the sideways displacement of the entire wake is also captured quite well in all cases.

3. Vortex sheet evolution in turbulent atmospheric boundary layer

In this section we generalize the prior analytical model of a yawed wind turbine wake that is applicable for ideal non-turbulent flow to the case of a wake with a turbulent atmospheric boundary layer background flow. Here we seek a model for the entire mean velocity distribution as a function of downstream distance as well as cross-stream position, accounting for the fact that the wake will be curling due to turbine yaw.

3.1. Vortex sheet evolution in turbulent atmospheric boundary layer

For the ideal flow case, we assumed that the vortex sheet does not decay as it moves downstream, and the strength of the streamwise vorticity only evolves along the vortex sheet in time following idealised vortex dynamics. Although this may be an acceptable assumption for turbines with uniform non-turbulent inflows, it is not expected to be valid for turbines immersed in turbulent environments such as the atmospheric boundary layer (ABL). The vertically varying mean inflow velocity in the ABL can be approximated as $U_{in}(z) = (u_*/\kappa) \ln(z/z_0)$, where u_* is the friction velocity, κ is the von-Kàrmàn constant and z_0 is the roughness height. As discussed in Shapiro *et al.* (2020), the vorticity shedding from a yawed rotor decays due to the turbulent diffusion; i.e. $\gamma_b(t)$ and $\gamma_r(t)$ are functions of time. Instead of solving the full governing equations for a diffusing vortex sheet, we approximate the effects of diffusion by scaling γ and the velocities by the circulation $\gamma_b(t)$ that is decaying according to a previously obtained analytical solution for the decay of CVP in a turbulent boundary layer (Shapiro *et al.* 2020). Specifically, we define new scaled variables $\hat{\gamma}$, \hat{u}_r and \hat{u}_θ such that

$$\gamma(\theta, t) = \gamma_b(t)\hat{\gamma}(\theta, \hat{t}), \quad u_r(\theta, t) = \gamma_b(t)\hat{u}_r(\theta, \hat{t}), \quad u_\theta(\theta, t) = \gamma_b(t)\hat{u}_\theta(\theta, \hat{t}). \quad (3.1a-c)$$

If one defines scaled displacement and time according to

$$\hat{\xi}(\theta, \hat{t}) = \frac{\xi(\theta, t)}{\xi_0}, \quad (3.2)$$

$$\hat{t}(t) = \frac{1}{\xi_0} \int_0^t \gamma_b(t') dt', \quad (3.3)$$

one recovers the original governing equations (2.15), (2.16) and (2.55) for the new definition of variables $\hat{\gamma}$, \hat{u}_r , \hat{u}_θ , $\hat{\xi}$ and \hat{t} . An additional term is however introduced in (2.17), so

$$\frac{\partial \hat{\gamma}}{\partial \hat{t}} + \frac{1}{\hat{\xi}} \frac{\partial(\hat{\gamma}\hat{u}_\theta)}{\partial \theta} \approx -\frac{\xi_0 \hat{\gamma}}{\gamma_b^2} \frac{d\gamma_b}{dt}. \quad (3.4)$$

It will be shown later in (3.8) that $\int (\gamma_b/\gamma_{b0}) dt \propto c(1 - \exp(k_v t/c))$, where $\gamma_{b0} = \gamma_b(t = 0)$, c is a constant and k_v is the expansion rate of the turbulent diffusive scale, and it is modelled as $u_*/U_{in}(z)$ (Shapiro *et al.* 2020). So the Taylor expansion of $\gamma_b(t)$ is given by

$$\gamma_b(t) \approx \gamma_{b0}(1 + O(k_v)t + O(k_v^2)t^2). \quad (3.5)$$

For atmospheric flows, the value of k_v at the hub height is equal to $u_*/U_h \ll 1$ (Shapiro *et al.* 2020). Therefore, γ_b is a slow varying reference quantity, and the additional term on the right-hand side of (3.4) is neglected for simplicity. This means that the solution already developed in § 2.2 will still be used as a model for the decaying vortex sheet once rescaled by the prescribed $\gamma_b(t)$ evolution and using the modified time \hat{t} . Note that for a constant γ_b , (3.1a-c)–(3.3) become the same as dimensionless variables defined earlier for a non-decaying vortex sheet.

Next, in order to evaluate the integral of (3.3) and derive a relationship for \hat{t} under turbulent inflow conditions we need to specify a convection velocity under turbulent inflow conditions. Due to atmospheric turbulence, the wake mixes and recovers more quickly than in the laminar inflow case, and, thus, the mean velocity at the wake edge is comparable to the incoming velocity. We therefore assume that in this case the vortex sheet at a height z is convected downstream with the incoming velocity at that height $U_{in}(z)$; thus, $U_{con} = U_{in}(z)$ and $t \approx x/U_{in}(z)$.

Vortex sheet model of curled wakes from yawed wind turbines

To evaluate (3.3), we must specify the decay of vorticity, i.e. of γ_b with streamwise distance. In Shapiro *et al.* (2020) the decay of the total vortex circulation $\Gamma_b(x)$ was studied, its relationship with the density γ_b being $\gamma_b = \Gamma_b/2R$. The resulting derived model for the total vortex circulation $\Gamma_b(x)$ as a function of downstream distance x is given by

$$\frac{\Gamma_b(x)}{\Gamma_{b0}} = \frac{\sqrt{\pi}}{4} \frac{R}{\eta(x)} \exp\left(-\frac{R^2}{8\eta^2(x)}\right) \left[I_0\left(\frac{R^2}{8\eta^2(x)}\right) + I_1\left(\frac{R^2}{8\eta^2(x)}\right) \right], \quad (3.6)$$

where $\Gamma_{b0} = \Gamma_b(x=0)$, I_n is the modified Bessel function of the first kind with order n , $\eta(x) = k_v(x - x_0)/24^{1/4}$ is the turbulent diffusive scale, and x_0 is the virtual origin assumed to be zero in the current work for simplicity.

One can use $\gamma_b = \Gamma_b/2R$, $t \approx x/U_{in}(z)$ and $\eta(x) \approx k_v x/24^{1/4}$ to rewrite (3.3) as

$$\hat{t} = \frac{24^{1/4}}{2k_v U_{in}(z) \xi_0 R} \int_0^\eta \Gamma_b(\eta') d\eta'. \quad (3.7)$$

Numerical integration of Γ_b , expressed by (3.6), yields results that can be conveniently approximated by the following (fitted) expression:

$$\frac{1}{\Gamma_{b0} R} \int_0^\eta \Gamma_b(\eta') d\eta' \approx 1.3 \left[1 - \exp\left(-\frac{\eta(x)}{1.3R}\right) \right]. \quad (3.8)$$

We then use (2.32) to express Γ_{b0} as a function of operating conditions, approximate $\xi_0(\theta)$ with $\tilde{\xi}_0$ given by (2.45), and insert (3.8) into (3.7) to obtain

$$\hat{t}(x, z) \approx -1.44 \frac{U_h R}{u_* \tilde{\xi}_0} C_T \cos^2 \beta \sin \beta \left[1 - \exp\left(-0.35 \frac{u_*}{U_{in}(z)} \frac{x}{R}\right) \right]. \quad (3.9)$$

Due to vorticity decay, \hat{t} for turbulent inflow cases increases at a slower rate than the one for laminar inflow cases. For instance, according to (3.9), for a turbine with $C'_T = 1.33$ subject to an ABL with $k_v = 0.05$, the streamwise position associated with $|\hat{t}| = 2$ varies between $17R$ and $61R$ for $\beta = 30^\circ - 10^\circ$. As mentioned in § 2.5, for the same turbine with $\beta = 30^\circ - 10^\circ$ subject to a laminar flow, $|\hat{t}| = 2$ at $x = 12R - 29R$. It is also worth noting that the above definition of \hat{t} , (3.9), is reduced to the one used for non-decaying vortex sheets (i.e. $\hat{t} = \gamma_{b0} t / \tilde{\xi}_0$) as u_* tends to zero.

The effect of the ground on the wake deflection was not modelled in the uniform inflow cases. To model the effect of the ground, we use an image technique to modify the wake centre location y_c , as shown in figure 7. Modelling the vortex sheet as a CVP, the image CVP induces a lateral velocity in the opposite direction, termed as v_g given by

$$v_g = \frac{\Gamma_b}{2\pi} \left[\frac{1}{z + z_h - \xi_0} - \frac{1}{z + z_h + \xi_0} \right] = \frac{\Gamma_b \xi_0}{\pi [(z + z_h)^2 - \xi_0^2]}. \quad (3.10)$$

Therefore, the lateral wake deflection caused by the ground is given by

$$y_g(z) = \int_0^t v_g(z, t') dt' = \frac{\xi_0 \int_0^t \Gamma_b(t') dt}{\pi [(z + z_h)^2 - \xi_0^2]}. \quad (3.11)$$

Approximating $\Gamma_b \approx 2\xi_0 \gamma_b$ and using $\hat{t} = \int_0^t \gamma_b(t') / \xi_0 dt'$, we find that

$$\hat{y}_g = \frac{2}{\pi} \frac{\hat{t}}{[(z + z_h) / \xi_0]^2 - 1}, \quad (3.12)$$

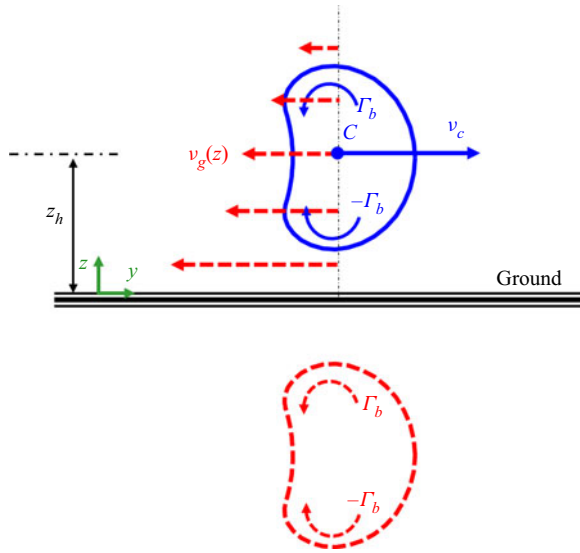


Figure 7. Schematic of modelling the effect of ground using an image technique.

where $\hat{y}_g = y_g/\xi_0$. Substituting ξ_0 with $\tilde{\xi}_0$ in (3.12) for simplicity and subtracting this result from (2.55) yields

$$\hat{y}_c = \frac{(\pi - 1)|\hat{t}|^3 + 2\sqrt{3}\pi^2\hat{t}^2 + 48(\pi - 1)^2|\hat{t}|}{2\pi(\pi - 1)\hat{t}^2 + 4\sqrt{3}\pi^2|\hat{t}| + 96(\pi - 1)^2} \text{sgn}(\hat{t}) - \frac{2}{\pi} \frac{\hat{t}}{[(z + z_h)/\tilde{\xi}_0]^2 - 1}. \quad (3.13)$$

It is worth mentioning that for $z_h \rightarrow \infty$, the second term on the right-hand side of (3.13) vanishes, and, thus, the equation is reduced to (2.55).

3.2. Analytical model for mean velocity distribution

The shape of the wake edge predicted earlier can now be used to model the spatial distribution of the velocity deficit in the curled wake at each streamwise position. For non-curved (i.e. non-yawed) wakes, a number of wake profiles have already been proposed in the literature, including top hat (Katić, Højstrup & Jensen 1986; Frandsen *et al.* 2006), Gaussian (Bastankhah & Porté-Agel 2014; Bastankhah & Porté-Agel 2016), double Gaussian (Schreiber, Balbaa & Bottasso 2020) and super-Gaussian (Shapiro *et al.* 2019; Blondel & Cathelain 2020). Most of these conserve flux of momentum deficit only in its linearised version valid far downstream; see discussion in Bastankhah & Porté-Agel (2014). Here we demonstrate the use of the shape deformation for an analytical model in the context of the Gaussian wake model (Bastankhah & Porté-Agel 2014; Bastankhah & Porté-Agel 2016), but it could be implemented in other wake models as well.

The modelled streamwise mean velocity,

$$U(x) = U_{in}(z) - \Delta U(x), \quad (3.14)$$

is defined based on the incoming velocity field $U_{in}(z)$ and the modelled velocity deficit in the wake, $\Delta U(x)$. In the Gaussian model, the velocity deficit profile is modelled as

$$\frac{\Delta U}{U_h} = C(x) \exp \left[-\frac{(y - y_c)^2 + (z - z_h)^2}{2\sigma^2} \right], \quad (3.15)$$

where $C(x)$ is the normalised maximum velocity deficit at each streamwise location and σ is the characteristic wake width. In (3.15) the wake centre location is $y_c = \hat{y}_c \xi_0$, where \hat{y}_c is obtained from (3.13) and ξ_0 is approximated with $\tilde{\xi}_0$ given in (2.45). In prior versions of the Gaussian wake model, it is assumed that the characteristic wake width depends only on downstream distance. Moreover, it is assumed that it grows linearly downstream at a rate k . The linear growth of the wake arises from the similarity solution when eddy viscosity is assumed to scale with a constant velocity, friction velocity u^* and the wake scale σ itself (Shapiro *et al.* 2019), i.e.

$$\sigma(x) = kx + \sigma_0, \tag{3.16}$$

where k is the wake expansion rate and σ_0 the initial wake size. We now propose to include wake curling and deformation by making σ dependent also on the angle θ according to

$$\sigma(x, \theta) = kx + 0.4\xi(\theta, x), \tag{3.17}$$

where $\xi(x, \theta) = \xi_0(\theta)\hat{\xi}(\theta, \hat{t})$, and $\xi_0(\theta)$ is given by (2.44), and the dimensionless wake shape $\hat{\xi}(\theta, \hat{t})$ is given by either the analytical relation of (2.29) for $|\hat{t}| \leq 2$ or the empirical relation (B1) for given values of polar angle θ and dimensionless time \hat{t} . The polar angle is determined at each position from $\tan \theta = (z - z_h)/(y - y_c)$, and \hat{t} is given by (3.9). In (3.17) the first term on the right-hand side of the equation expands the wake in all radial directions due to turbulent mixing, while the second term deforms the wake cross-section according to the vortex sheet solution derived earlier. According to (3.17), for an unyawed turbine, the initial characteristic wake width is reduced to $0.4R\sqrt{A_*}$, which is the same as the one suggested by Bastankhah & Porté-Agel (2014). For the wake expansion rate, we assume that $k = \alpha u_*/U_{in}(z)$ (Shapiro *et al.* 2019), where α is an empirical constant. Alternatively, k can be estimated based on the turbulence intensity I of the incoming boundary layer flow (i.e. $k = \alpha' I$, where α' is an empirical constant) as suggested in prior studies (see Niayifar & Porté-Agel (2016), Carbajo Fuertes, Markfort & Porté-Agel (2018), Zhan, Letizia & Iungo (2020), among others). At each height z , turbulence intensity $I(z)$ is defined as $\sqrt{\overline{u'^2}}/U_{in}(z)$, where u' is the turbulent fluctuation of streamwise velocity and the overbar denotes time averaging. Note that by invoking the logarithmic law for the fluctuating velocity variance in high-Reynolds-number turbulent boundary layers (Marusic *et al.* 2013; Meneveau & Marusic 2013), one can show that u_*/U_{in} and I are related to each other by $I = (u_*/U_{in})[B_1 - A_1 \ln(z/\delta)]^{1/2}$, where δ is the boundary layer thickness, and A_1 and B_1 are constants.

The maximum velocity deficit $C(x)$ in (3.15) is obtained by enforcing the conservation of streamwise momentum deficit flux $\rho \int \Delta U(U_h - \Delta U) dA \approx T \cos \beta$. To simplify the integration and avoid dependence on θ , we approximate $\sigma^2(x, \theta)$ with $\tilde{\sigma}^2(x)$ where the latter is given by

$$\tilde{\sigma}^2(x) = (kx + 0.4\tilde{\xi}_0)(kx + 0.4\tilde{\xi}_0 \cos \beta). \tag{3.18}$$

In this expression, $\tilde{\xi}_0$ is given by (2.45) and $k = \alpha u_*/U_h$ is the wake expansion rate at $z = z_h$. This yields

$$C(x) = 1 - \sqrt{1 - \frac{C_T \cos^3 \beta}{2\tilde{\sigma}^2(x)/R^2}}. \tag{3.19}$$

Note that in stating conservation of flux of streamwise momentum deficit, pressure and turbulent and viscous shear stress effects are assumed to be negligible. This may be a questionable assumption in the near wake region as well as far wake of turbines deep inside a wind farm (Bastankhah *et al.* 2021).

For the sake of completeness, a summary of the steps required to implement the proposed model and predict wake velocity deficit distributions at a given downwind location $\mathbf{x} = (x, y, z)$ is provided below.

- (1) Compute the approximate form of the initial wake shape $\tilde{\xi}_0$ (2.45).
- (2) Determine the dimensionless time \hat{t} from (3.9).
- (3) Find the wake centre location $y_c \approx \hat{y}_c \tilde{\xi}_0$, where \hat{y}_c is given by (3.13).
- (4) Find the polar angle θ , which is measured from the positive y -axis toward the positive z -axis such that $\tan \theta = (z - z_h)/(y - y_c)$.
- (5) Evaluate the initial wake shape $\xi_0(\theta)$ (2.44).
- (6) Calculate the wake shape function $\xi(\theta, x) = \xi_0(\theta) \hat{\xi}(\theta, \hat{t})$, where $\hat{\xi}(\theta, \hat{t})$ can be estimated either from the analytical solution (2.29) (if $|\hat{t}| < 2$) or the empirical one (B1), and χ is given by (2.42).
- (7) Find the wake width $\sigma(x, \theta)$ based on (3.17).
- (8) Evaluate the maximum velocity deficit $C(x)$ from (3.19), where $\tilde{\sigma}^2(x)$ is given by (3.18).
- (9) Determine the wake velocity deficit ΔU according to (3.15), where σ obtained in step (7) is used.

3.3. Comparison with LES

In the following, the streamwise mean velocity distribution based on the proposed model is compared with the LES data for turbulent ABL inflow cases. Simulations of yawed wind turbines represented as rotating actuator disks (ADM-R) are performed using $C_T' = 1.33$ and a local tip-speed ratio of $\lambda' = 10.67$ at yaw angles of $\beta = 15^\circ, 20^\circ, 25^\circ$ and 30° , where the local tip-speed ratio is defined as $\lambda' = \Omega R/U_d$. In unyawed conditions the selection of local thrust coefficient and tip-speed ratio corresponds to $C_T = 0.75$ and $\lambda = 8$, which are realistic of modern utility-scale turbines. The actuator disk with diameter $D = 100$ m and a hub height of $z_h = 100$ m is placed 500 m from the inlet of a domain with an effective size of $L_x = 3.75, L_y = 3$ and $L_z = 1$ km. The domain is divided into $N_x = 360, N_y = 288$ and $N_z = 432$ grid points. The velocity field is averaged for a time $T u_* / L_z \approx 8$, where $u_* = 0.45$ m s⁻¹. A $0.49 L_z$ shift is used to reduce streamwise streaks in the time-averaged velocity field. The roughness height is $z_0 = 0.1$ m.

Figures 8 show contour maps of streamwise velocity on representative planes across the LES domain. It shows the streaks in the turbulent ABL at the turbine hub height and the generated wake behind the yawed wind turbine, which is shown as a black circle. At downstream locations, the effect of the curled yawed wind turbine wake on the cross-plane velocity field is shown at downstream locations of $x/R = 8, 24$ and 40 .

Figures 9 and 10 show the wake mean velocity distributions based on the LES results and the analytical model for $\beta = 15^\circ$ and 25° at various downstream locations. Top panels show the normalised velocity deficit $\Delta U/U_h$ and bottom panels show the normalised streamwise velocity distribution.

As in past studies (Bastankhah & Porté-Agel 2016; Shapiro *et al.* 2018), the wake recovery rate k in the analytical model is calculated by fitting a Gaussian profile to the downstream wake profiles at $z = z_h$. This gives the resulting wake expansion rate as $k = 0.6 u_* / U_{in}$. As seen in figures 9 and 10, the model captures the curling and deflection of the wake as well as some variation in the wake deflection as a function of vertical distance due to ground effects. The LES results display slightly less curling than the model as well as more noticeable wake deflection towards the ground that is opposite

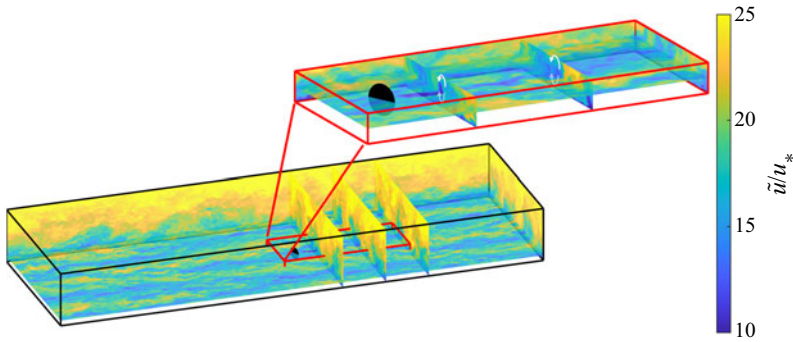


Figure 8. Contour plots of instantaneous streamwise velocity including a wind turbine with turbulent boundary layer inflow from LES. Turbine operating parameters are $C'_T = 1.33$ and yaw angle $\beta = 25^\circ$. Contours are shown through the turbine centre at $z = z_h$, at the back of the domain at $y = L_y$ and $x = L_x$ and at cross-planes of $x/R = 8, 24$ and 40 . The swept area of the rotor is denoted as a black circle. A zoomed in flow field around the turbine (red box) is also shown and white arrows highlight the sense of rotation of the induced CVP.

to the deflection of the bulk of the wake. Also, the analytical model does not predict small vertical wake deflections observed in the LES data. According to the vortex sheet analysis performed in the current study (see (2.49)), this vertical deflection is due to rotation effects (i.e. non-zero values of rotation rate χ). As mentioned in § 2.4, for simplicity, we did not include the vertical wake deflection in the final version of the model. Despite these small differences, figures 9 and 10 show that overall model predictions are in acceptable agreement with the LES data.

Wake flow results are also used to compute the power of a downwind turbine based on both the proposed analytical model and the LES data. In both cases, a virtual wind turbine is placed in the flow field at different distances downstream of the yawed turbine. The idea is that as yawing increases, the downstream turbine will overlap less and less with the wake due both to the sideways displacement of the wake and to the curled crescent shaped wake that creates lower velocity deficit at the centre of the hypothetical downstream turbine.

In order to evaluate the power generated by the downwind turbine, we require the disk-averaged streamwise velocity defined according to

$$U_d = (1 - a) \frac{1}{\pi R^2} \iint_{disk} U(x_T, y, z) dz dy, \quad (3.20)$$

where $U(x_T, y, z)$ is the mean velocity in the flow at the turbine location x_T computed from the model or from the LES and the integration covers the turbine disk area. For the latter case, we evaluate the mean velocity by time averaging $U(x_T, y, z) = \langle \tilde{u}_1(x_T, y, z) \rangle$. Since the turbine is not included in the simulation, the turbine disk velocity that would occur there includes the $(1 - a)$ prefactor, where a is the turbine's assumed induction factor. The power is subsequently calculated as

$$P = \frac{1}{2} \rho \pi R^2 C'_T U_d^3, \quad (3.21)$$

and it is normalised by the power that an unyawed free-standing turbine would generate under similar conditions, $P_0 = (1/2) \rho \pi R^2 C'_T (1 - a)^3 U_h^3$ (thus making the result independent of assumed C'_T , etc.).

Figure 11 shows the normalised power of this hypothetical turbine as a function of streamwise spacing for different yaw angles of the upwind turbine. The figure

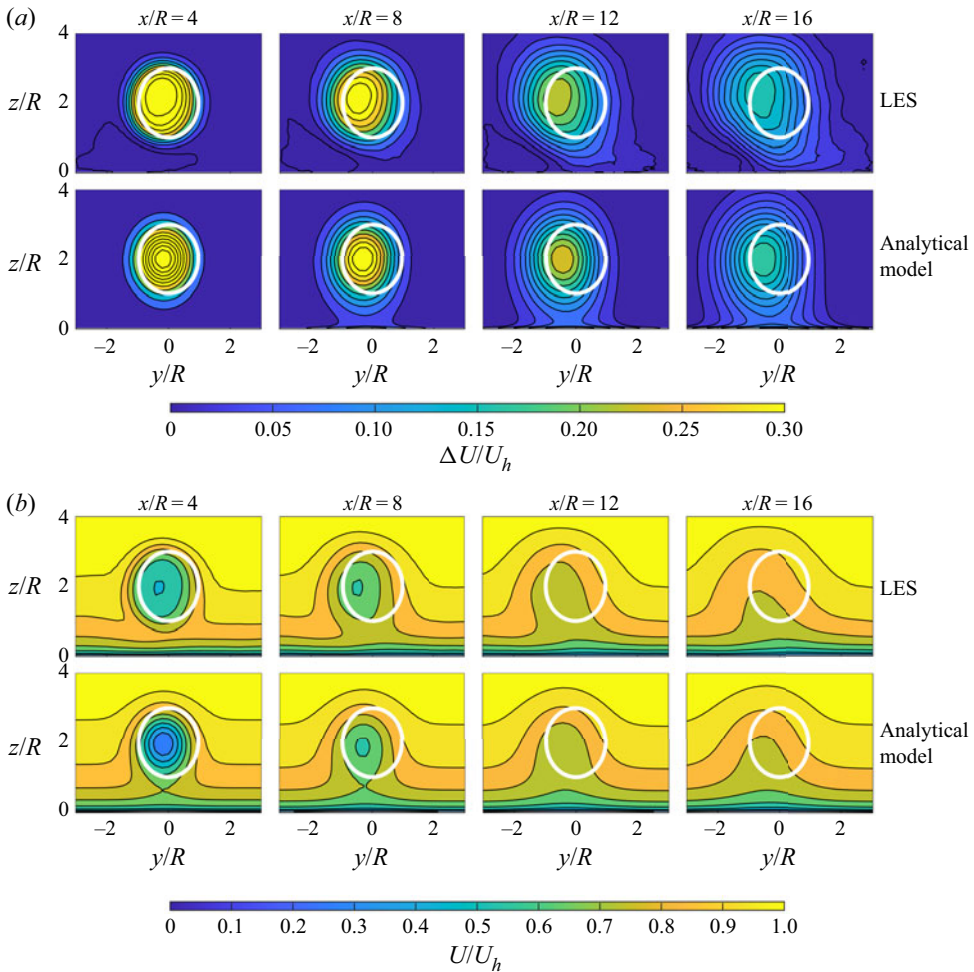


Figure 9. (a) Contour plots of normalised wake velocity deficit behind a wind turbine in turbulent inflow with a thrust coefficient of $C_T' = 1.33$ and local tip-speed ratio $\lambda' = 10.67$ at a yaw angle of $\beta = 15^\circ$. White circles indicate the frontal area of wind turbines. (b) Contour plots of normalised streamwise velocity behind the same turbine.

demonstrates good agreement between the analytical model and the LES results for a broad range of streamwise spacings and yaw angles.

3.4. Comparison with experimental data

Model predictions are also compared with wind-tunnel experiments by Bastankhah & Porté-Agel (2016). Flow measurements were performed to quantify the wake of a yawed wind turbine with a diameter of 15 cm and hub height of 12.5 cm, and the turbine is subject to a turbulent boundary layer, naturally developed over the smooth surface of the wind-tunnel floor. Additional information on turbine properties (C_T , λ , etc.) and inflow conditions (U_h , I , etc.) may be found in Bastankhah & Porté-Agel (2016). The wake recovery rate k for the analytical model is estimated based on $k = 0.35I$ (Carbajo Fuertes *et al.* 2018). Figure 12 shows contours of normalised velocity deficit in yz -planes at different downwind locations and different yaw angles based on both experiments and

Vortex sheet model of curled wakes from yawed wind turbines

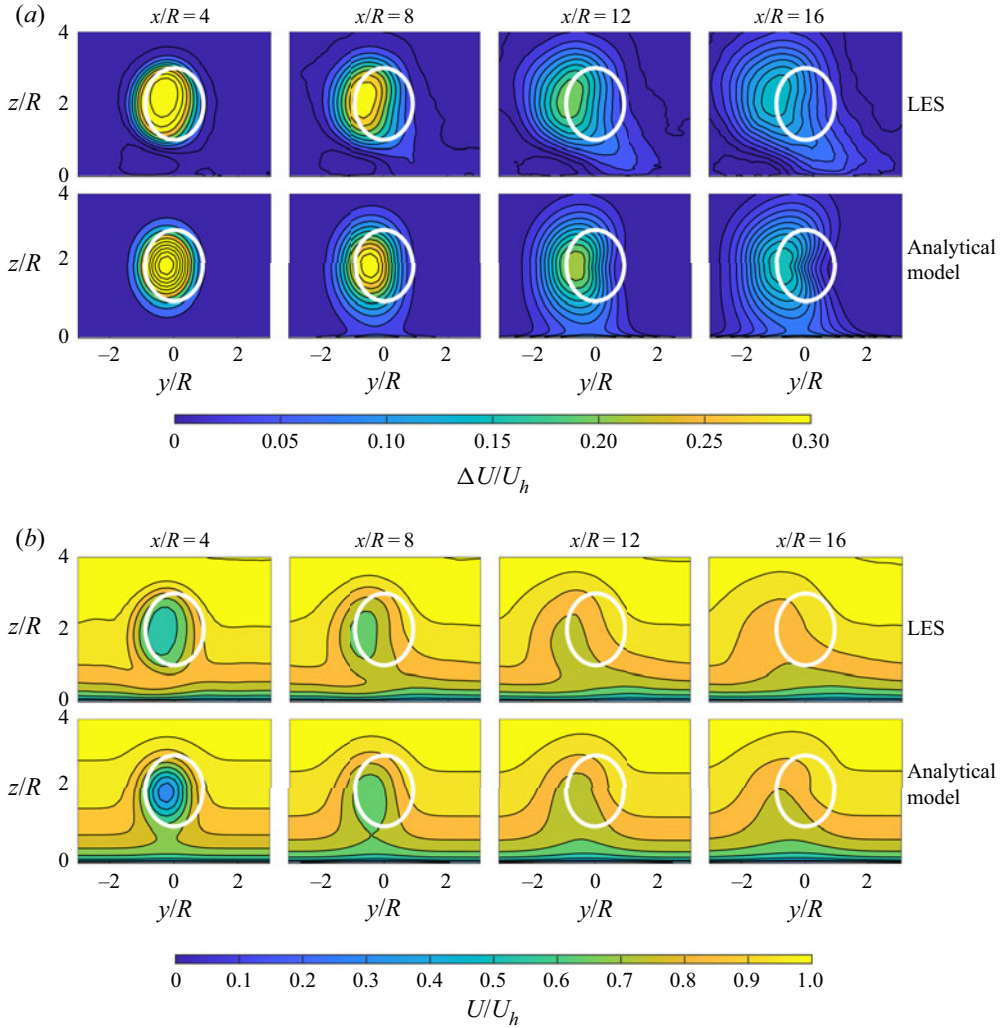


Figure 10. Same as figure 9 but for a yaw angle of $\beta = 25^\circ$.

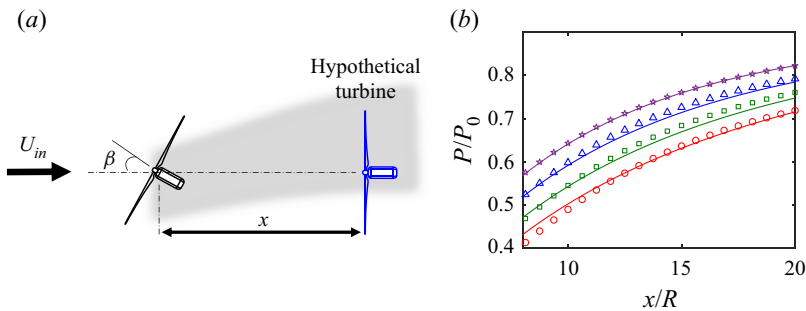


Figure 11. (a) Sketch of a hypothetical turbine placed at various locations downstream of the yawed turbine in the LES field. (b) Normalised power of the hypothetical turbine operating at $C_T = 1.33$. Different yaw angles in LES are $\beta = 15^\circ$ (\circ , red), $\beta = 20^\circ$ (\square , green), $\beta = 25^\circ$ (Δ , blue) and $\beta = 30^\circ$ (\star , purple). The predictions based on the analytical curled wake model are shown as solid lines.

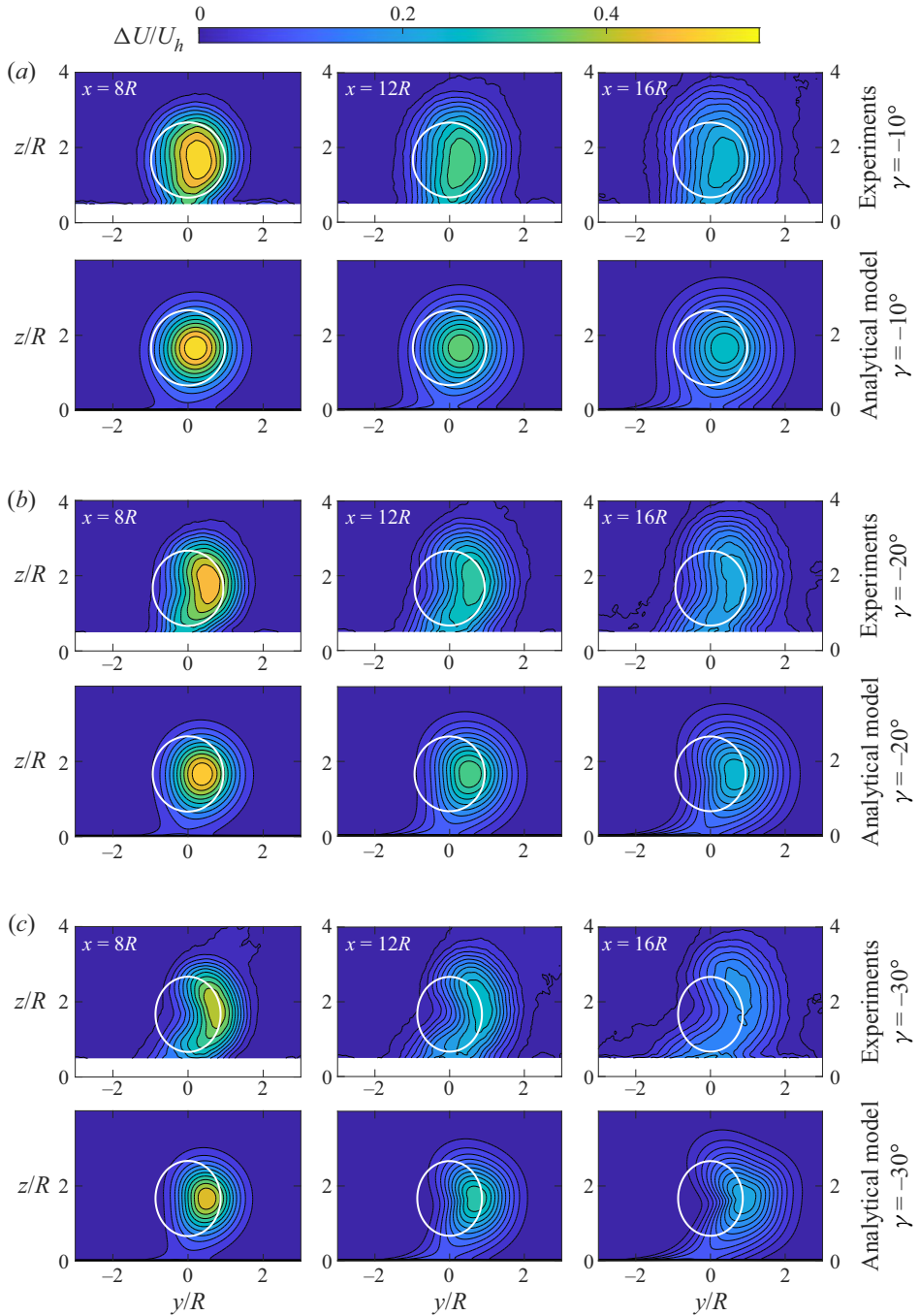


Figure 12. Contours of normalised velocity deficit in yz -planes at different downwind locations and different yaw angles based on: wind-tunnel experiments (Bastankhah & Porté-Agel 2016) and the new proposed analytical model. White circles indicate the frontal area of wind turbine.

model predictions. Overall the figure shows that the proposed model is able to successfully predict the complex curled shape of the wake and its lateral deflection. The opposite wake deflection close to the ground is also well captured by the model. While the overall trends and qualitative features of the velocity defect distribution of the curled wake are reproduced by the analytical model, some differences between measurements and model can still be discerned. The figure shows that the vertical extent of the lower half of the wake is underestimated by the analytical model, which is mainly due to neglecting the wake of the turbine tower in the analytical model. Tower wake effects are however expected to be less significant for utility-scale wind turbines which tend to have less bulky towers (with respect to the rotor diameter).

4. Summary and conclusions

A curled shape is a typical aerodynamic feature of wakes behind yawed turbines. In this study we develop an analytical model to describe the wake shape and its downstream evolution for both uniform ideal inflow and turbulent boundary layer background flow. The predicted wake shape is then used in a wake model to describe analytically the mean velocity deficit distribution behind a yawed wind turbine.

To model the curled shape of the wake, we represent the wake edge as a vortex sheet shedding from the rotor disk circumference due to both yaw offset and rotation. A simple relationship is developed to estimate the initial distribution of vorticity along this vortex sheet as a function of turbine operating conditions such as thrust coefficient, yaw angle and tip-speed ratio. The goal is to obtain the evolution of the locus of this vortex sheet with time. The governing equations for the deformation of the vortex sheet are developed based on the Biot–Savart law and the vorticity transport equation. After non-dimensionalising the equations, they are solved using a power series expansion method. Subsequently, assuming a given downstream convection velocity, we map the time evolution to a spatial one in the streamwise direction. The developed solution is only valid for a limited range of dimensionless times ($|\hat{t}| < 2$) or equivalent distances. For larger values of $|\hat{t}|$, an empirical expression is also proposed, which complies with the derived analytical solution for smaller times but is also realistic for larger times.

Apart from deforming to a curled shape, the vortex sheet is also deflected laterally behind a yawed turbine. This deflection is modelled with an equation combining analytically derived deflections using two approaches: considering an approximately circular vortex sheet (valid for small times) and considering self-induced motion of a CVP (valid for larger times). Moreover, close to the ground the wake is deflected in the opposite direction. This ground effect is modelled using image flow that introduces an additional deflection term to account for the velocity induced by the image CVP.

Wake shape predictions are first compared with numerical simulation data for a yawed turbine placed in a uniform, non-turbulent inflow. Several cases with different values of thrust coefficients, yaw angles and tip-speed ratios are considered. It is shown that the analytical model predictions agree well with LES results at moderate times. Also in agreement with the theory, we show that the numerical simulation results can be collapsed into a common wake shape when the problem variables are normalised using the scaling as suggested by the theoretical model.

The theory is then adapted to the case of turbulent ABL inflow for applications to real wind turbine flows. It is known that, unlike the case of ideal flow, turbulent diffusion plays a central role in weakening the streamwise vortices during their downstream evolution. This phenomenon is modelled by non-dimensionalising the governing equations using a time-varying reference vortex sheet strength. Finally, we modify the Gaussian wake model

to incorporate the predicted shape $\xi(\theta, \hat{\nu})$ and lateral deflection y_c of the curled wake. The analytical curled wake model thus describes the full spatial distribution of mean streamwise velocity downstream of a yawed turbine. To validate the model predictions for the ABL case, wake velocity contours at different downstream positions are compared with LES and wind-tunnel results at various yaw angles. Moreover, the power extracted by a hypothetical wind turbine located at different downwind positions is computed and compared with similar results from the LES-generated mean velocity distributions. A good agreement of the model predictions with the numerical and experimental data is observed, suggesting that the proposed model includes the most relevant fluid mechanical effects governing the mean velocity distribution in wakes downstream of yawed wind turbines. Also, the proposed analytical model should be useful for tasks such as wind farm optimization and control, where numerical simulations tend to be too time consuming and costly. While to our knowledge the developed analytical model is the first of its kind to predict the curled shape of yawed turbine wakes, more research is still needed to shed light on the impact of ABL characteristics such as wind veer on the wake of a yawed turbine. Of special interest is to study the combined effect of yaw offset and wind veer on the wake cross-section in future works. Moreover, the effect of ground and rotation on the wake cross-section needs to be thoroughly studied in future works for turbines with different geometries and operating conditions.

Funding. M.B. acknowledges funding from Innovate UK (grant no. 89640). C.S., D.G. and C.M. acknowledge funding from the National Science Foundation (grant nos. 1949778) and computational resources from MARCC and Cheyenne (doi:10.5065/D6RX99HX). C.S. is an American Association for the Advancement of Science (AAAS) Science & Technology Policy Fellow hosted at the US Department of Energy. All opinions expressed in this article are the authors' and do not necessarily reflect the policies or views of the Department of Energy, Oak Ridge Associated Universities, the Oak Ridge Institute for Science and Education, or AAAS.

Declaration of interests. The authors report no conflict of interest.

Author ORCIDs.

- ✉ Majid Bastankhah <https://orcid.org/0000-0002-1326-027X>;
- ✉ Carl R. Shapiro <https://orcid.org/0000-0002-9868-7896>;
- ✉ Sina Shamsoddin <https://orcid.org/0000-0002-9867-6783>;
- ✉ Dennice F. Gayme <https://orcid.org/0000-0003-0330-415X>;
- ✉ Charles Meneveau <https://orcid.org/0000-0001-6947-3605>.

Appendix A. Evaluation of p.v. of required integrals

This appendix evaluates the integrals (2.24) and (2.25). Here, we only provide the proof for (2.24), as (2.25) can be solved similarly. First, we define I as

$$I := \int_0^{2\pi} \frac{\sin(nx)}{\tan[(x - b)/2]} dx. \tag{A1}$$

By defining the complex parameters $i := \sqrt{-1}$ and $a := e^{-i(b/2)}$ and the complex variable $z := e^{ix}$, and considering that $dx = dz/(iz)$, $\sin(nx) = (z^n - z^{-n})/(2i)$ and $\tan[(x - b)/2] = -i(a^2z - 1)/(a^2z + 1)$, the integral I can be written as

$$I = \frac{1}{2i} \int_{C_1} F(z) dz, \tag{A2}$$

where C_1 is the integration path, which is the unit circle, $|z| = 1$, on the complex plane, and $F(z)$ is defined as

$$F(z) := \frac{(z^{2n} - 1)(a^2z + 1)}{a^2z^{n+1} \left(z - \frac{1}{a^2}\right)}. \tag{A3}$$

In order to evaluate the integral in (A2), we need to calculate the residues of $F(z)$ at its singularities. Here $F(z)$ has two singularities: one at $z = 0$ (pole of order $n + 1$) and the other at $z = a^{-2}$ (pole of order one). To calculate the residue of $F(z)$ at $z = 0$, we define a function $\Phi(z)$ such that (see Ablowitz & Fokas (2003), chapter 4)

$$F(z) = \frac{\Phi(z)}{z^{n+1}}. \tag{A4}$$

Therefore, the residue at $z = 0$ is

$$Res(F(z); 0) = \left[\frac{1}{n!} \frac{d^n}{dz^n} \Phi(z) \right]_{z=0}, \tag{A5}$$

or

$$Res(F(z); 0) = \frac{1}{n!} \left[\sum_{k=0}^n \binom{n}{k} \frac{d^{n-k}}{dz^{n-k}} (a^2z^{2n+1} + z^{2n} - a^2z - 1) \frac{d^k}{dz^k} \frac{1}{a^2z - 1} \right]_{z=0}. \tag{A6}$$

It can readily be shown that the first derivative term is non-zero only for $k = n - 1$ and $k = n$. Also expanding the second derivative, and after some manipulation, we obtain

$$Res(F(z); 0) = 2a^{2n} = 2e^{-ibn}. \tag{A7}$$

Now we calculate the residue of $F(z)$ at $z = a^{-2}$. To do this, we define a function $\Phi'(z)$ such that

$$F(z) = \frac{\Phi'(z)}{\left(z - \frac{1}{a^2}\right)}. \tag{A8}$$

Therefore, the residue at $z = a^{-2}$ is

$$Res(F(z); a^{-2}) = \Phi'(z)(z = a^{-2}) = 2(e^{ibn} - e^{-ibn}). \tag{A9}$$

Since the second singularity is located on the integration path, we cannot use the Cauchy residue theorem directly. However, this integral can be regarded as a Cauchy type integral, and we can use the Plemelj formulae to evaluate its Cauchy p.v.. To do this, we assume I^+ is the limiting value of the integral I when the second singularity of $F(z)$ (i.e. $z = a^{-2} = e^{ib}$) approaches the integration path ($|z| = 1$) from inside the unit circle, and I^- is the limiting value of the integral I when the second singularity of $F(z)$ approaches the integration path from outside the unit circle (see Ablowitz & Fokas (2003), chapter 7).

Thus,

$$I^+ = (2\pi i) \left(\frac{1}{2i} \right) [\text{Res}(F(z); 0) + \text{Res}(F(z); a^{-2})] = 2\pi e^{ibn}, \quad (\text{A10})$$

and

$$I^- = (2\pi i) \left(\frac{1}{2i} \right) [\text{Res}(F(z), 0)] = 2\pi e^{-ibn}. \quad (\text{A11})$$

According to the Plemelj formulae, we have the following for the p.v. of integral I ,

$$p.v.(I) = \frac{1}{2}(I^+ + I^-) = \frac{1}{2}(2\pi e^{ibn} + 2\pi e^{-ibn}) = 2\pi \cos(bn), \quad (\text{A12})$$

and (2.24) is proved.

Appendix B. Empirical vortex sheet shape model for large times

The analytical solution for the deformation of the vortex sheet derived earlier is valid only for relatively short times. In fact, $\xi(\theta, \hat{t})$ can become negative (the vortex sheet crosses itself and becomes non-simple and non-analytic) at dimensionless times with magnitude larger than a critical time denoted by \hat{t}_c . Therefore, the analytical solution should be only used for $|\hat{t}| < \hat{t}_c$. By setting $\hat{\xi} = 0$ in (2.29), one can find that \hat{t}_c is in the range of 2–2.5. Thus, a limit of $|\hat{t}| \leq 2$ is considered in this paper for the analytical solution to be used. Note that the downwind location where $|\hat{t}| = 2$ is reached depends on inflow and turbine operating conditions as discussed in §§ 2.5 and 3.

In the following, we develop an empirical relationship for $\hat{\xi}(\theta, \hat{t})$. Using the same harmonic terms as those in the analytical solution (2.29), we assume the empirical model is given by

$$\begin{aligned} \hat{\xi}(\theta, \hat{t}) = 1 - \alpha [c_1(\hat{t}) \cos 2\theta + (c_2(\hat{t})\chi \sin 2\theta + c_3(\hat{t}) \cos 3\theta) \\ + (c_4(\hat{t})\chi^2 \cos 2\theta + c_5(\hat{t})\chi \sin 3\theta + c_6(\hat{t}) \cos 2\theta + c_7(\hat{t}) \cos 4\theta)], \end{aligned} \quad (\text{B1})$$

where α is a constant, and $c_1(\hat{t}), \dots, c_7(\hat{t})$ are time-dependant coefficients that need to be determined. Equation (B1) must provide predictions similar to the analytical solution (2.29) at small values of $|\hat{t}|$, but it must provide desirable results for $|\hat{t}|$ beyond \hat{t}_c too. To achieve this goal, we use a hyperbolic tangent function to express $c_i(\hat{t})$,

$$c_i(\hat{t}) = a_i \tanh \frac{\hat{t}^{n_i}}{b_i}, \quad (\text{B2})$$

where $i = 1, \dots, 7$ and a_i, b_i and n_i are constants. As $\hat{t} \rightarrow \infty$, (B1) is reduced to

$$\begin{aligned} \lim_{\hat{t} \rightarrow \infty} \hat{\xi}(\theta, \hat{t}) = 1 - \alpha [a_1 \cos 2\theta + (a_2\chi \sin 2\theta + a_3 \cos 3\theta) \\ + (a_4\chi^2 \cos 2\theta + a_5\chi \sin 3\theta + a_6 \cos 2\theta + a_7 \cos 4\theta)]. \end{aligned} \quad (\text{B3})$$

In (B3) the overall curled shape of the wake is achieved by a suitable selection of a_1, \dots, a_7 , while the extent of curling is controlled by α . The constant α is introduced to ensure that the maximum possible curling is obtained as $\hat{t} \rightarrow \infty$. To estimate values of a_1, \dots, a_7 , one can use the analytical solution at an arbitrary dimensionless time which is sufficiently large but still smaller than \hat{t}_c . By doing so, we construct the curled shape of the wake for $\hat{t} \rightarrow \infty$ from its analytical shape at a finite value of \hat{t} . The values of a_i

Term	1	2	3	4	5	6	7
a_i	$\frac{1}{2}$	$-\frac{1}{3}$	$-\frac{1}{4}$	$-\frac{1}{6}$	$\frac{5}{16}$	$-\frac{5}{48}$	$\frac{7}{48}$
b_i	4α	8α	8α	16α	16α	16α	16α
n_i	2	3	3	4	4	4	4

Table 1. Coefficients of the empirical vortex sheet shape model (B1), where $\alpha = 1.263 \cos(0.33\chi)$ and $c_i = a_i \tanh(\hat{t}^{n_i}/b_i)$.

($i = 1, \dots, 7$) are obtained based on the analytical solution (2.29) at $\hat{t} = 2$ and are written in table 1, although other values of \hat{t} could be used.

In order to obtain maximum curling as $\hat{t} \rightarrow \infty$, $\hat{\xi}$ must go to zero at $\theta = \theta_0$, where $0 \leq \theta_0 \leq 2\pi$, while $\hat{\xi}$ should be still non-negative for all polar angles. Note that for $\chi = 0$, θ_0 is a multiple of π , but it might have a different value if $\chi \neq 0$ due to the wake rotation. Based on the values of a_i written in table 1, one can show that $\hat{\xi}$ given in (B3) is always equal or greater than $1 - 0.792\alpha \sec(0.33\chi)$. Therefore, α must be equal to $1.263 \cos(0.33\chi)$ to guarantee that (i) $\hat{\xi}$ never becomes negative, and (ii) maximum possible curling occurs as $\hat{t} \rightarrow \infty$.

The asymptotic behaviour of (B1) at $\hat{t} \rightarrow \infty$ was used to find values of a_i and α . Next, we look into the asymptotic behaviour of (B1) at $\hat{t} \rightarrow 0$ to find b_i and n_i . The function $a_i \tanh \hat{t}^{n_i}/b_i$ asymptotes to $a_i \hat{t}^{n_i}/b_i$ as $\hat{t} \rightarrow 0$. Therefore, we obtain

$$\lim_{\hat{t} \rightarrow 0} \hat{\xi}(\theta, \hat{t}) = 1 - \alpha \left[\frac{a_1 \hat{t}^{n_1}}{b_1} \cos 2\theta + \left(\frac{a_2 \hat{t}^{n_2}}{b_2} \chi \sin 2\theta + \frac{a_3 \hat{t}^{n_3}}{b_3} \cos 3\theta \right) + \left(\frac{a_4 \hat{t}^{n_4}}{b_4} \chi^2 \cos 2\theta + \frac{a_5 \hat{t}^{n_5}}{b_5} \chi \sin 3\theta + \frac{a_6 \hat{t}^{n_6}}{b_6} \cos 2\theta + \frac{a_7 \hat{t}^{n_7}}{b_7} \cos 4\theta \right) \right]. \tag{B4}$$

Equation (B4) should match the analytical solution (2.29). Therefore, values of n_i and b_i can be readily determined, and they are written in table 1. Figure 13 shows predictions of the wake shape based on both the analytical and empirical solutions for different values of dimensionless time \hat{t} and rotation rate χ . As expected, the empirical relation provides similar results to those of the analytical solution at small values of \hat{t} . Moreover, unlike the analytical solution, it provides reasonable predictions for large values of \hat{t} (i.e. $|\hat{t}| > 2$).

Appendix C. Large-eddy simulation code

The numerical code used in this study is the pseudo-spectral LES code LESGO. It solves the filtered Navier–Stokes equations in rotational form

$$\frac{\partial \tilde{u}_i}{\partial x_i} = 0, \tag{C1}$$

$$\frac{\partial \tilde{u}_i}{\partial t} + \tilde{u}_j \left(\frac{\partial \tilde{u}_i}{\partial x_j} - \frac{\partial \tilde{u}_j}{\partial x_i} \right) = -\frac{\partial \tau_{ij}}{\partial x_j} - \frac{\partial \tilde{p}^*}{\partial x_i} - \frac{1}{\rho} \frac{\partial p_\infty}{\partial x} \delta_{i1} + f_i, \tag{C2}$$

where \tilde{u}_i is the filtered velocity field, τ_{ij} is the trace-free part of the subgrid stress tensor, \tilde{p}^* is the modified pressure, $\partial_x p_\infty$ is the driving streamwise pressure gradient and f_i are the

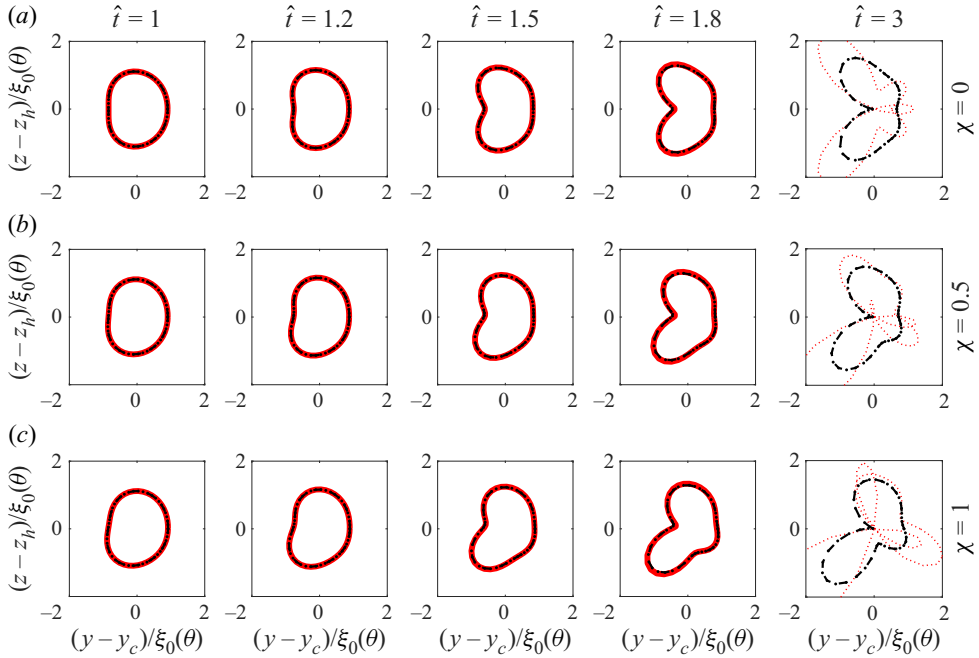


Figure 13. The curled shape of the wake for different values of dimensionless time \hat{t} and rotation rate χ . The analytical solution (2.29) is shown by the red colour (solid curves for $\hat{t} \leq 2$ and dotted curves for $\hat{t} > 2$), and the proposed empirical relation (B1) is shown by black dashed lines.

turbine forces. The trace-free part of the subgrid stress tensor is modelled using an eddy viscosity approach

$$\tau_{ij} = -2\nu_T \tilde{S}_{ij}, \tag{C3}$$

where $\tilde{S}_{ij} = \frac{1}{2}(\partial_j \tilde{u}_i + \partial_i \tilde{u}_j)$ is the filtered strain rate tensor. The LESGO code simulates Cartesian domains using a pseudo-spectral numerical scheme that mixes spectral derivatives in the streamwise direction x and spanwise direction y with second-order finite-differencing in the vertical direction z . Time integration uses the second-order Adams–Bashforth method.

We consider wind turbines under both uniform laminar inflow (Shapiro *et al.* 2018) and turbulent boundary layer inflows (Shapiro *et al.* 2020). In the uniform inflow simulations, the Smagorinsky model is used for the eddy viscosity

$$\nu_T = C_s^2 \Delta^2 |S|, \quad |S|^2 = 2S_{ij}S_{ij}, \tag{C4a,b}$$

where $C_s = 0.16$ is the Smagorinsky coefficient. This choice has a negligible effect on the results as the eddy diffusivity is confined to regions of the flow with strong velocity gradients. The inflow conditions are enforced via a fringe region at the end of the domain. This fringe region smoothly transitions to a prescribed inflow velocity $U_i(0, y, z) = U_{in} \delta_{i1}$ (Stevens *et al.* 2014). At the top and bottom of the domain, the stress-free boundary conditions for streamwise u and spanwise v velocity components are applied and the no-penetration condition is applied for the vertical component w .

For the turbulent boundary layer simulations, the Smagorinsky coefficient C_s is modelled using the Lagrangian-averaged scale dependent model (Bou-Zeid, Meneveau & Parlange 2005). Turbulent inflow conditions are applied using a fringe region forcing

where the inflow condition is sampled from a concurrently running simulation (Stevens *et al.* 2014) with shifted periodic boundary conditions (Munters, Meneveau & Meyers 2016). At the ground, the stress with a roughness height of z_0 is modelled using the equilibrium wall model. The total wall stress is given by

$$\tau_w = - \left[\frac{\kappa V}{\ln(\Delta z/2z_0)} \right]^2, \tag{C5}$$

where Δz is the vertical grid spacing, κ is the von-Kármán constant and V is the velocity magnitude obtained from $V^2 = \tilde{u}(\Delta z/2)^2 + \tilde{v}(\Delta z/2)^2$. The wall stress is then apportioned to each component as

$$\tau_{i3}|_{wall} = \tau_w \frac{\tilde{u}_i}{V}. \tag{C6}$$

The LESGO code implements the ADM-R using the local formulation for the thrust and angular forces. The thrust force in this formulation is

$$T = \frac{1}{2} \rho \pi R^2 C'_T U_d^2, \tag{C7}$$

where C'_T is the local thrust coefficient and U_d is the disk-averaged velocity. The total thrust force is distributed across the swept area of the disk using the filtered indicator function $\mathcal{R}(\mathbf{x})$,

$$\mathbf{f}(\mathbf{x}) = T \mathcal{R}(\mathbf{x}) \mathbf{n} \tag{C8}$$

in the unit normal direction to the disk $\mathbf{n} = \cos \beta \mathbf{i} + \sin \beta \mathbf{j}$. The filtered indicator function

$$\mathcal{R}(\mathbf{x}) = \int G(\mathbf{x} - \mathbf{x}') \mathcal{I}(\mathbf{x}') d^3 \mathbf{x}' \tag{C9}$$

is found by convolving an indicator function $\mathcal{I}(\mathbf{x})$ for the geometric shape of the disk with finite thickness s with a Gaussian filtering kernel $G(\mathbf{x})$ with a characteristic width $\sigma_R = 1.5h/\sqrt{12}$ that is proportional to the mean grid size $h = \sqrt{\Delta x^2 + \Delta y^2 + \Delta z^2}$.

To define the angular force of the rotation actuator disk in a local formulation, we consider the ADM for unyawed wind turbines. The disk-averaged velocity $U_d = U_{in}(1 - a)$, streamwise velocity deficit $u_x = 2U_{in}a$ and angular change in velocity $u_\theta = 2a'\Omega r$ are defined based on the streamwise a and tangential a' induction factors and rotation rate of the disk Ω . Considering annular rings of the swept area of the rotor, the annular thrust is the product of the annular flow rate and the change in momentum $dT = U_{in}a(1 - a)\pi r dr \rho 2U_{in}$. The annular torque is similarly the product of the annular flow rate and the change in angular momentum $dQ = U_{in}(1 - a)\pi r dr \rho 2a'\Omega r^2$.

Since the annular power is equal to the products $dP = dT U_d$ and $dP = dQ \Omega$, the equality

$$\frac{1}{2} \rho U_{in}^3 4a(1 - a)^2 \pi r dr = \frac{1}{2} \rho U_{in}^3 4a'(1 - a) \left(\frac{\Omega r}{U_{in}} \right)^2 \pi r dr \tag{C10}$$

can be solved for the tangential induction factor, so we obtain

$$a' = a(1 - a) \left(\frac{U_{in}}{\Omega r} \right)^2. \tag{C11}$$

The torque can be written in local and standard forms

$$dQ = \frac{1}{2} \rho U_{in}^2 R 4a(1 - a)^2 \frac{U_{in}}{\Omega R} \pi r dr = \frac{1}{2} \rho U_{in}^2 R C_Q \pi r dr = \frac{1}{2} \rho U_d^2 R C'_Q \pi r dr. \tag{C12}$$

Defining the tip-speed ratio $\lambda = \Omega R/U_{in}$ and local tip-speed ratio as $\lambda' = \Omega R/U_d$ the torque coefficient is

$$C'_Q = \frac{C'_P}{\lambda'}. \quad (C13)$$

For ideal actuator disks, $C'_P = C'_T$. The tangential force is then found from $rdf_\theta = dQ$,

$$df_\theta = \frac{1}{2}\rho U_{in}^2 \frac{C_P R}{\lambda} \frac{1}{r} \pi r dr = \frac{1}{2}\rho U_d^2 \frac{C_P R}{\lambda'} \frac{1}{r} \pi r dr. \quad (C14)$$

The tangential force applied by the rotating rotor in LESGO is written as

$$f_\theta(x) = \frac{1}{2}\rho \pi R^2 \frac{C'_T}{\lambda'} U_d^2 \frac{R}{r} \mathcal{R}(x) \hat{\theta}, \quad (C15)$$

where $\hat{\theta}$ is the tangential unit vector. In the case of no wake rotation, the tip-speed ratio is infinite and the angular force vanishes.

REFERENCES

- ABLOWITZ, M.J. & FOKAS, A.S. 2003 *Complex Variables: Introduction and Applications*. Cambridge University Press.
- ANDERSON, J.D. 2011 *Fundamentals of Aerodynamics*. McGraw-Hill.
- BARTL, J., MÜHLE, F., SCHOTTLER, J., SÆTRAN, L., PEINKE, J., ADARAMOLA, M. & HÖLLING, M. 2018 Wind tunnel experiments on wind turbine wakes in yaw: effects of inflow turbulence and shear. *Wind Energy Sci.* **3**, 329–343.
- BASTANKHAH, M. & PORTÉ-AGEL, F. 2014 A new analytical model for wind-turbine wakes. *Renew. Energy* **70**, 116–123.
- BASTANKHAH, M. & PORTÉ-AGEL, F. 2015 A wind-tunnel investigation of wind-turbine wakes in yawed conditions. *J. Phys.: Conf. Ser.* **625**, 012014.
- BASTANKHAH, M. & PORTÉ-AGEL, F. 2016 Experimental and theoretical study of wind turbine wakes in yawed conditions. *J. Fluid Mech.* **806**, 506–541.
- BASTANKHAH, M. & PORTÉ-AGEL, F. 2019 Wind farm power optimization via yaw angle control: a wind tunnel study. *J. Renew. Sustain. Energy* **11** (2), 023301.
- BASTANKHAH, M., WELCH, B.L., MARTÍNEZ-TOSSAS, L.A., KING, J. & FLEMING, P. 2021 Analytical solution for the cumulative wake of wind turbines in wind farms. *J. Fluid Mech.* **911**, A53.
- BLONDEL, F. & CATHELAIN, M. 2020 An alternative form of the super-gaussian wind turbine wake model. *Wind Energy Sci.* **5**, 1225–1236.
- BLONDEL, F., CATHELAIN, M., JOULIN, P.-A. & BOZONNET, P. 2020 An adaptation of the super-gaussian wake model for yawed wind turbines. *J. Phys.: Conf. Ser.* **1618**, 062031.
- BOSSUYT, J., SCOTT, R., ALI, N. & CAL, R.B. 2021 Quantification of wake shape modulation and deflection for tilt and yaw misaligned wind turbines. *J. Fluid Mech.* **917**, A3.
- BOU-ZEID, E., MENEVEAU, C. & PARLANGE, M. 2005 A scale-dependent Lagrangian dynamic model for large eddy simulation of complex turbulent flows. *Phys. Fluids* **17** (2), 025105.
- BRANLARD, E. & GAUNAA, M. 2016 Cylindrical vortex wake model: skewed cylinder, application to yawed or tilted rotors. *Wind Energy* **19** (2), 345–358.
- BURTON, T., SHARPE, D., JENKINS, N. & BOSSANYI, E. 1995 *Wind Energy Handbook*, 1st edn. Wiley.
- CALAF, M., MENEVEAU, C. & MEYERS, J. 2010 Large eddy simulation study of fully developed wind-turbine array boundary layers. *Phys. Fluids* **22** (1), 015110.
- CAMPAGNOLO, F., PETROVIĆ, V., SCHREIBER, J., NANOS, E.M., CROCE, A. & BOTTASSO, C.L. 2016 Wind tunnel testing of a closed-loop wake deflection controller for wind farm power maximization. *J. Phys.: Conf. Ser.* **753**, 032006.
- CARBAJO FUERTES, F., MARKFORT, C.D. & PORTÉ-AGEL, F. 2018 Wind turbine wake characterization with nacelle-mounted wind lidars for analytical wake model validation. *Remote Sens.* **10** (5), 668.
- COELHO, S.L.V. & HUNT, J.C.R. 1989 The dynamics of the near field of strong jets in crossflows. *J. Fluid Mech.* **200**, 95–120.
- COLEMAN, R.P., FEINGOLD, A.M. & STEMPIN, C.W. 1945 Evaluation of the induced-velocity field of an idealized helicopter rotor. *Tech. Rep.* L5E10. DTIC Document.

- FLEMING, P., et al. 2019 Initial results from a field campaign of wake steering applied at a commercial wind farm—part 1. *Wind Energy Sci.* **4**, 273–285.
- FLEMING, P.A., GEBRAAD, P.M.O., LEE, S., VAN WINGERDEN, J., JOHNSON, K., CHURCHFIELD, M., MICHALAKES, J., SPALART, P. & MORIARTY, P. 2014 Evaluating techniques for redirecting turbine wakes using SOWFA. *Renew. Energy* **70**, 211–218.
- FRANDSEN, S.T., BARTHELMIE, R., PRYOR, S., RATHMANN, O., LARSEN, S., HØJSTRUP, J. & THØGENSEN, M. 2006 Analytical modelling of wind speed deficit in large offshore wind farms. *Wind Energy* **9**, 39–53.
- GEBRAAD, P.M.O., TEEUWISSE, F.W., WINGERDEN, J.W., FLEMING, P.A., RUBEN, S.D., MARDEN, J.R. & PAO, L.Y. 2014 Wind plant power optimization through yaw control using a parametric model for wake effects – a CFD simulation study. *Wind Energy* **19**, 95–114.
- HOWLAND, M.F., BOSSUYT, J., MARTÍNEZ-TOSSAS, L.A., MEYERS, J. & MENEVEAU, C. 2016 Wake structure in actuator disk models of wind turbines in yaw under uniform inflow conditions. *J. Renew. Sustain. Energy* **8**, 043301.
- HOWLAND, M.F., LELE, S.K. & DABIRI, J.O. 2019 Wind farm power optimization through wake steering. *Proc. Natl Acad. Sci. USA* **116** (29), 14495–14500.
- JENSEN, N.O. 1983 A note on wind turbine interaction. *Tech. Rep. Risø-M-2411*. Risø National Laboratory, Roskilde, Denmark.
- KATIĆ, I., HØJSTRUP, J. & JENSEN, N.O. 1986 A simple model for cluster efficiency. In *Proceedings of the European Wind Energy Association Conference and Exhibition*, pp. 407–409. A. Raguzzi, Bookshop for Scientific Publications.
- KING, J., FLEMING, P., KING, R., MARTÍNEZ-TOSSAS, L.A., BAY, C.J., MUDAFORT, R. & SIMLEY, E. 2021 Control-oriented model for secondary effects of wake steering. *Wind Energy Sci.* **6** (3), 701–714.
- KLEUSBERG, E., SCHLATTER, P. & HENNINGSON, D.S. 2020 Parametric dependencies of the yawed wind-turbine wake development. *Wind Energy* **23** (6), 1367–1380.
- LIN, M. & PORTÉ-AGEL, F. 2019 Large-eddy simulation of yawed wind-turbine wakes: comparisons with wind tunnel measurements and analytical wake models. *Energies* **12** (23), 4574.
- MAHESH, K. 2013 The interaction of jets with crossflow. *Annu. Rev. Fluid Mech.* **45**, 379–407.
- MANWELL, J.F., MCGOWAN, J.G. & ROGERS, A.L. 2010 *Wind Energy Explained: Theory, Design and Application*. John Wiley & Sons.
- MARTÍNEZ-TOSSAS, L.A., ANNONI, J., FLEMING, P.A. & CHURCHFIELD, M.J. 2019 The aerodynamics of the curled wake: a simplified model in view of flow control. *Wind Energy Sci.* **4**, 127–138.
- MARTINEZ-TOSSAS, L.A. & BRANLARD, E. 2020 The curled wake model: equivalence of shed vorticity models. *J. Phys.: Conf. Ser.* **1452**, 012069.
- MARTÍNEZ-TOSSAS, L.A., CHURCHFIELD, M.J., YILMAZ, A.E., SARLAK, H., JOHNSON, P.L., SØRENSEN, J.N., MEYERS, J. & MENEVEAU, C. 2018 Comparison of four large-eddy simulation research codes and effects of model coefficient and inflow turbulence in actuator-line-based wind turbine modeling. *J. Renew. Sustain. Energy* **10** (3), 033301.
- MARTÍNEZ-TOSSAS, L.A., KING, J., QUON, E., BAY, C.J., MUDAFORT, R., HAMILTON, N., HOWLAND, M.F. & FLEMING, P.A. 2021 The curled wake model: a three-dimensional and extremely fast steady-state wake solver for wind plant flows. *Wind Energy Sci.* **6** (2), 555–570.
- MARUSIC, I., MONTY, J.P., HULTMARK, M. & SMITS, A.J. 2013 On the logarithmic region in wall turbulence. *J. Fluid Mech.* **716**, R3
- MENEVEAU, C. 2019 Big wind power: seven questions for turbulence research. *J. Turbul.* **20** (1), 2–20.
- MENEVEAU, C. & MARUSIC, I. 2013 Generalized logarithmic law for high-order moments in turbulent boundary layers. *J. Fluid Mech.* **719**, R1.
- MOORE, D.W. 1978 The equation of motion of a vortex layer of small thickness. *Stud. Appl. Maths* **58** (2), 119–140.
- MUNTERS, W., MENEVEAU, C. & MEYERS, J. 2016 Shifted periodic boundary conditions for simulations of wall-bounded turbulent flows. *Phys. Fluids* **28** (2), 025112.
- NIAYIFAR, A. & PORTÉ-AGEL, F. 2016 Analytical modeling of wind farms: a new approach for power prediction. *Energies* **9** (9), 741.
- OKULOV, V.L. & SØRENSEN, J.N. 2010 Maximum efficiency of wind turbine rotors using Joukowsky and Betz approaches. *J. Fluid Mech.* **649**, 497–508.
- OKULOV, V.L. & VAN KUIK, G.A.M. 2012 The Betz–Joukowsky limit: on the contribution to rotor aerodynamics by the British, German and Russian scientific schools. *Wind Energy* **15** (2), 335–344.
- PARK, J. & LAW, K.H. 2016 A data-driven, cooperative wind farm control to maximize the total power production. *Appl. Energy* **165**, 151–165.
- PORTÉ-AGEL, F., BASTANKHAH, M. & SHAMSODDIN, S. 2020 Wind-turbine and wind-farm flows: a review. *Boundary-Layer Meteorol.* **174** (1), 1–59.

- QIAN, G. & ISHIHARA, T. 2018 A new analytical wake model for yawed wind turbines. *Energies* **11** (3), 665.
- ROTTMAN, J.W., SIMPSON, J.E. & STANSBY, P.K. 1987 The motion of a cylinder of fluid released from rest in a cross-flow. *J. Fluid Mech.* **177**, 307–337.
- SCHOTTLER, J., MÜHLE, F., BARTL, J., PEINKE, J., ADARAMOLA, M.S., SÆTRAN, L. & HÖLLING, M. 2017 Comparative study on the wake deflection behind yawed wind turbine models. *J. Phys.: Conf. Ser.* **854**, 012032.
- SCHREIBER, J., BALBAA, A. & BOTTASSO, C.L. 2020 Brief communication: a double-Gaussian wake model. *Wind Energy Sci.* **5** (1), 237–244.
- SHAPIRO, C.R., GAYME, D.F. & MENEVEAU, C. 2018 Modelling yawed wind turbine wakes: a lifting line approach. *J. Fluid Mech.* **841**, R1.
- SHAPIRO, C.R., GAYME, D.F. & MENEVEAU, C. 2020 Generation and decay of counter-rotating vortices downstream of yawed wind turbines in the atmospheric boundary layer. *J. Fluid Mech.* **903**, R2.
- SHAPIRO, C.R., STARKE, G.M., MENEVEAU, C. & GAYME, D.F. 2019 A wake modeling paradigm for wind farm design and control. *Energies* **12** (15), 2956.
- SPEAKMAN, G.A., ABKAR, M., MARTÍNEZ-TOSSAS, L.A. & BASTANKHAH, M. 2021 Wake steering of multirotor wind turbines. *Wind Energy*. **24**, 1294–1314.
- STEVENS, R.J.A.M., GRAHAM, J. & MENEVEAU, C. 2014 A concurrent precursor inflow method for large eddy simulations and applications to finite length wind farms. *Renew. Energy* **68**, 46–50.
- STEVENS, R.J.A.M., MARTINEZ-TOSSAS, L.A. & MENEVEAU, C. 2018 Comparison of wind farm large eddy simulations using actuator disk and actuator line models with wind tunnel experiments. *Renew. Energy* **116** (Part A), 470–478.
- STEVENS, R.J.A.M. & MENEVEAU, C. 2017 Flow structure and turbulence in wind farms. *Annu. Rev. Fluid Mech.* **49**, 311–339.
- VAN KUIK, G.A.M., SØRENSEN, J.N. & OKULOV, V.L. 2015 Rotor theories by professor Joukowsky: momentum theories. *Prog. Aerosp. Sci.* **73**, 1–18.
- VERHULST, C. & MENEVEAU, C. 2015 Altering kinetic energy entrainment in large eddy simulations of large wind farms using unconventional wind turbine actuator forcing. *Energies* **8** (1), 370–386.
- ZHAN, L., LETIZIA, S. & IUNGO, G.V. 2020 Optimal tuning of engineering wake models through lidar measurements. *Wind Energy Sci.* **5** (4), 1601–1622.
- ZONG, H. & PORTÉ-AGEL, F. 2020 A point vortex transportation model for yawed wind turbine wakes. *J. Fluid Mech.* **890**, A8.