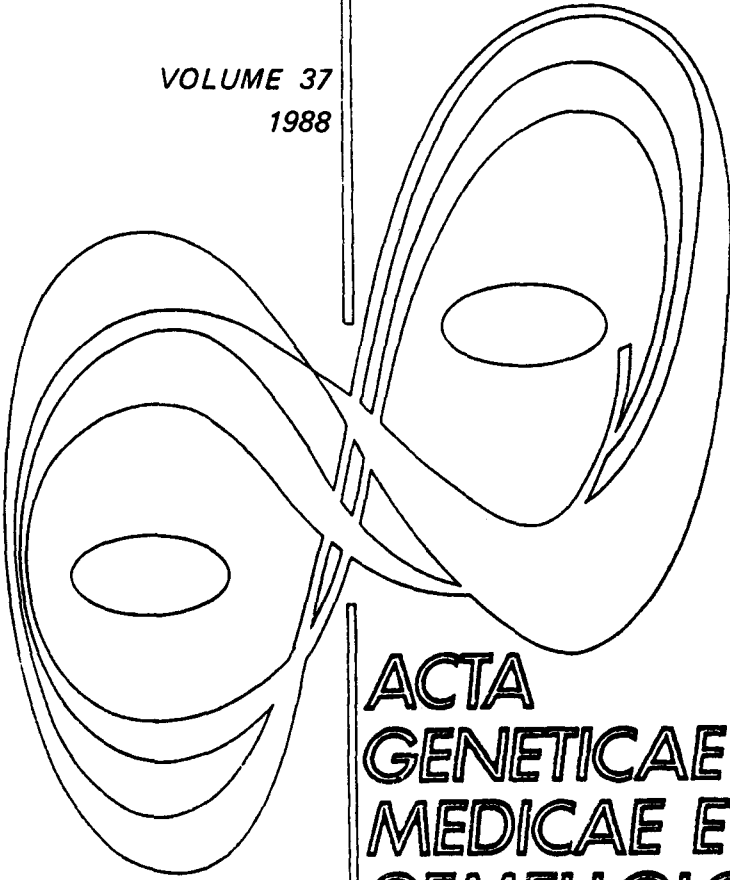


VOLUME 37  
1988



**ACTA  
GENETICAE  
MEDICAE ET  
GEMELLOLOGIAE  
TWIN RESEARCH**

*Official Journal of the International Society for Twin Studies*

Published by THE MENDEL INSTITUTE, Rome

© 1988 Associazione Istituto di Genetica Medica  
e Gemellologia Gregorio Mendel  
Piazza Galeno 5  
00161 Roma, Italy

## CONTENTS

Volume 37 • Number 1 • 1988

- 1 The Northwestern University Twin Study. V: Twin Deliveries at Prentice Women's Hospital and Maternity Center, 1978-83**  
by L.G. Keith, R. Depp, M.W. Method, R. Wittman, J. Lopez-Zeno, J. Minoque, R. Nearing, D.M. Keith
- 11 The Northwestern University Twin Study. VII: The Mode of Delivery in Twin Pregnancy - North American Considerations**  
by R. Depp, L.G. Keith, J.J. Sciarra
- 19 The Northwestern University Twin Study. VIII: On the Causes and Care of Multiple Pregnancy**  
by L.G. Keith, M.W. Method, O.R. Depp, D.M. Keith
- 27 The European Multiple Birth Study (EMBS)**  
by R. Vlietinck, E. Papiernik, C. Derom, H. Grandjean, M. Thiery, R. Derom
- 31 Is the Quality of Care in Twins and in Singletons Related?**  
by P. Buekens, R. Derom, M. Dramaix, M. Kavadias, M. Thiery
- 35 Fetal Growth in Twin Pregnancies**  
by J.P. Neilson
- 41 On the Cause of Retardation of Fetal Growth in Multiple Gestations**  
by O.P. Bleker, J. Oosting, D.J. Hemrika
- 47 Perinatal Deaths in Twin Pregnancy: A 22-Year Review**  
by R.H. Lumme, S.V. Saarikoski
- 55 The Northwestern University Triplet Study. I: Overview of the International Literature**  
by L.G. Keith, S. Ameli, D.M. Keith

- 65 The Northwestern University Triplet Study. II: Fourteen Triplet Pregnancies Delivered between 1981 and 1986**  
by L.G. Keith, S. Ameli, O.R. Depp, J. Hobart, D.M. Keith
- 77 The Northwestern University Triplet Study. III: Neonatal Outcome**  
by J.W. Collins, Jr., D. Merrick, R.J. David, S. Ameli, E.S. Ogata
- 81 Early Developmental Progress of Preterm Twins Discordant for Birthweight and Risk**  
by A. Stauffer, W.J. Burns, K.A. Burns, J. Melamed, C.E. Herman
- 89 Triplet and Higher-Order Births: What Is the Optimal Delivery Route?**  
by M. Thiery, G. Kermans, R. Derom
- 99 Management of Triplet Pregnancy**  
by J.C. Pons, J.M. Mayenga, G. Plu, R.G. Forman, E. Papiernik
- 105 Mode of Delivery in Multiple Birth of Higher Order**  
by M. Feingold, C. Cetrulo, M. Peters, A. Chaudhury, S. Shmoys, O. Geifman

**Volume 37 • Number 2 • 1988**

- 111 The Epidemiology of Conjoined Twins in Latin America**  
by E.E. Castilla, J.S. Lopez-Camelo, I.M. Orioli, O. Sanchez, J.E. Paz
- 119 Fertility, Fecundity and Twinning: A Comparison of the Trends in Births and Twinning in Australia from 1854 to 1982**  
by J.D.H. Doherty
- 127 Demographic Parameters and Twinning: A Study in Catalonia, Spain**  
by J. Bertranpetit, A. Marin
- 137 The Validity of Weinberg's Rule in the East Flanders Prospective Twin Survey (EFPTS)**  
by R. Vlietinck, C. Derom, R. Derom, H. Van den Berghe, M. Thiery
- 143 Human Twinning in Iniö in the South-West of Finland**  
by R. Kroneld
- 147 Twinning in Greece**  
by A. Katakis, A. Kouvatsi
- 151 Mother-Twin Interaction During Early Childhood**  
by M. Robin, D. Josse, C. Tourrette
- 161 The Effect of Twins on Family Relationships**  
by A.C. Sandbank

- 173 The Bereaved Twin**  
by J. Woodward
- 181 Grief in Multifetal Death**  
by M.K. Sainsbury
- 187 Maternal Recognition of Twin Pregnancy**  
by P.E.M. Malmstrom, E.J. Malmstrom
- 193 Essential Nonmedical Perinatal Services for Multiple Birth Families**  
by P.E.M. Malmstrom, T. Faherty, P. Wagner

#### LETTERS TO THE EDITOR

- 199 Dermatoglyphics Available for Study at the Kloepfer Genetics Archives**  
by J.E. Maxey-Conley, R. Kloepfer Peters
- 201 Comments on the Paper "The Monozygotic Twinning Rate: Is It Really Constant?"**  
by J. Fellman
- 203 Response to Fellman**  
by G. Allen, Z. Hrubec

#### Volume 37 • Number 3-4 • 1988

- 205 Multiple Regression Analysis of Twin Data: Etiology of Deviant Scores versus Individual Differences**  
by J.C. DeFries, D.W. Fulker
- 217 Characteristics of Participants and Nonparticipants in the NHLBI Twin Study**  
by R.R. Fabsitz, S. Kalousdian, D. Carmelli, D. Robinette, J.C. Christian
- 229 Twin Study: Relationship between Birth Weight, Zygosity, Placentation, and Pathologic Placental Changes**  
by M.A. Ramos-Arroyo, T.M. Ulbright, P.-L. Yu, J.C. Christian
- 239 Temperament and Neonatal Risk in Full-Term and Preterm Combined Vaginal/Cesarean Section Twin Pairs**  
by M.L. Riese
- 249 The End of Reproductive Life in Mothers of Twins: Epidemiologic Analysis of a Large Data Base**  
by P. Philippe

- 263 Height of Women, Twinning and Breast Cancer: Epidemiological Evidence of a Relationship**  
by J.D.H. Doherty
- 277 Twinning Rate in Scandinavia, Germany and the Netherlands During Years of Privation**  
by A.W. Eriksson, W.M.A. Bressers, P.J. Kostense, K.J. Pitkänen, J.H. Mielke, L.B. Jorde, R.F.J. Tas, J.O. Fellman
- 299 Frequency of Triplet Zygosity Types among U.S. Births, 1964**  
by G. Allen
- 313 Perinatal Mortality in Twins, Australia, 1973-1980: I**  
by J.D.H. Doherty
- 321 Perinatal Mortality in Twins, Australia, 1973-1980: II. Maternal Age, Lethal Congenital Malformations and Sex**  
by J.D.H. Doherty
- 331 Perinatal Mortality in Multiple Pregnancy Patients**  
by F.P. Meehan, I.M. Magani, G. Mortimer
- 339 Conjoined Twins in Japan, 1979-1985**  
by Y. Imaizumi
- 347 New Case of an EEC-Like Syndrome in Twins**  
by M. Schmidt, F.M. Salzano
- 351 Announcements**
- 357 Current Research on Multiple Births**
- 381 Author Index to Volume 37**
- 383 Subject Index to Volume 37**