

NOTES FOR CONTRIBUTORS

Contributions for publication should be addressed to The Editors, *Geological Magazine*, Department of Earth Sciences, Downing Street, Cambridge CB2 3EQ, England, or may be submitted through a member of the Editorial Advisory Board (addresses inside front cover). Rapid Communications should be clearly marked as such on the envelope. Submission implies that the manuscript has not been published previously nor currently submitted for publication elsewhere.

All contributions, whether articles, correspondence or reviews, must be sent in triplicate and typed on one side of the paper, with wide margins and double-line spacing throughout. Any minor corrections should be made neatly in the typescript, leaving the margins clear. Contributions should follow the general style of papers in recent issues of the *Magazine*. The author is invited to nominate up to five possible referees, who will not necessarily be used.

Articles must be accompanied by a brief, informative rather than indicative, abstract. Headings should be set out clearly but not underlined. Primary headings should be in lower case, at margin, with arabic numeral; subheadings should be numbered 2.a., 2.b., etc., and tertiary headings 2.a.1., 2.a.2. No cross-references should be given by page number, but 'above' and 'below' should be used with the section specified, e.g. Section 2.a.2. The SI system of units should be used. The author should mark in the margin of the manuscript where figures and tables may be inserted. References to points in larger works should, where possible, quote the page reference, e.g. Ager, 1981, p. 102. Authors alone are responsible for the correctness of their references.

Rapid Communications should follow the style of articles and must be no more than four printed pages of the *Magazine* (approximately 5000 work-equivalents) including an abstract of no more than 100 words. These contributions will be dealt with by a streamlined schedule and should appear within six months from receipt. To meet this schedule, authors will be required to make revisions with minimal delay.

Discussions of papers which have already appeared in the *Magazine* are welcomed, subject to the four-page limit.

Tables should be typed with double-line spacing on sheets separate from the running text. Each table must have a caption that will make the data in the table intelligible without reference to the text.

Illustrations should be submitted at 1/2 × size to be published. The Author's name and figure number should be clearly marked on the back of each piece of artwork. Figures will preferably be either

single column (80mm) or double column (169mm) width when printed. The height of figure can vary in either width up to full print area height (240 mm). Illustrations should have scale bars, not '× 40'. Redrafting may be required by the editors if major savings in print area can be achieved without loss of information. **Detailed maps** or **multiple logs** may well require a whole page and the size of the lettering should match the necessary reduction. Where necessary break a figure into two facing pages; **folding figures** will not be accepted. **Landscape figures** should have no lettering upside down on the final printed page. Avoid where possible gross disparities in lettering size on the drawing. See figure below for optimum size of original and final lettering size. Boxes of ornament should be explained within the figure, not in the caption. Figures composed of **photographs** should be glossy prints presented at publication scale. Each component part should be named with a lower-case letter and given a scale bar. Photographic artwork is numbered as part of the sequence of figures, not as separate plates. The *Magazine* will be able to publish a limited number of free **colour plates** each year; the editors will decide which plates to accept on their scientific merit. Authors submitting colour plates are asked to give detailed reasons why colour is necessary. Duplicates of illustrations should be sent, and may be prints or, preferably, photocopies reduced to final size. Figure captions must be typed with double-line spacing on sheets separate from the running text.

References must be double-spaced and spelt out in full, e.g.

BROOKS, M. & JAMES, D. G. 1975. The geological results of seismic refraction surveys in the Bristol Channel, 1970–73. *Journal of the Geological Society* 131, 163–82.

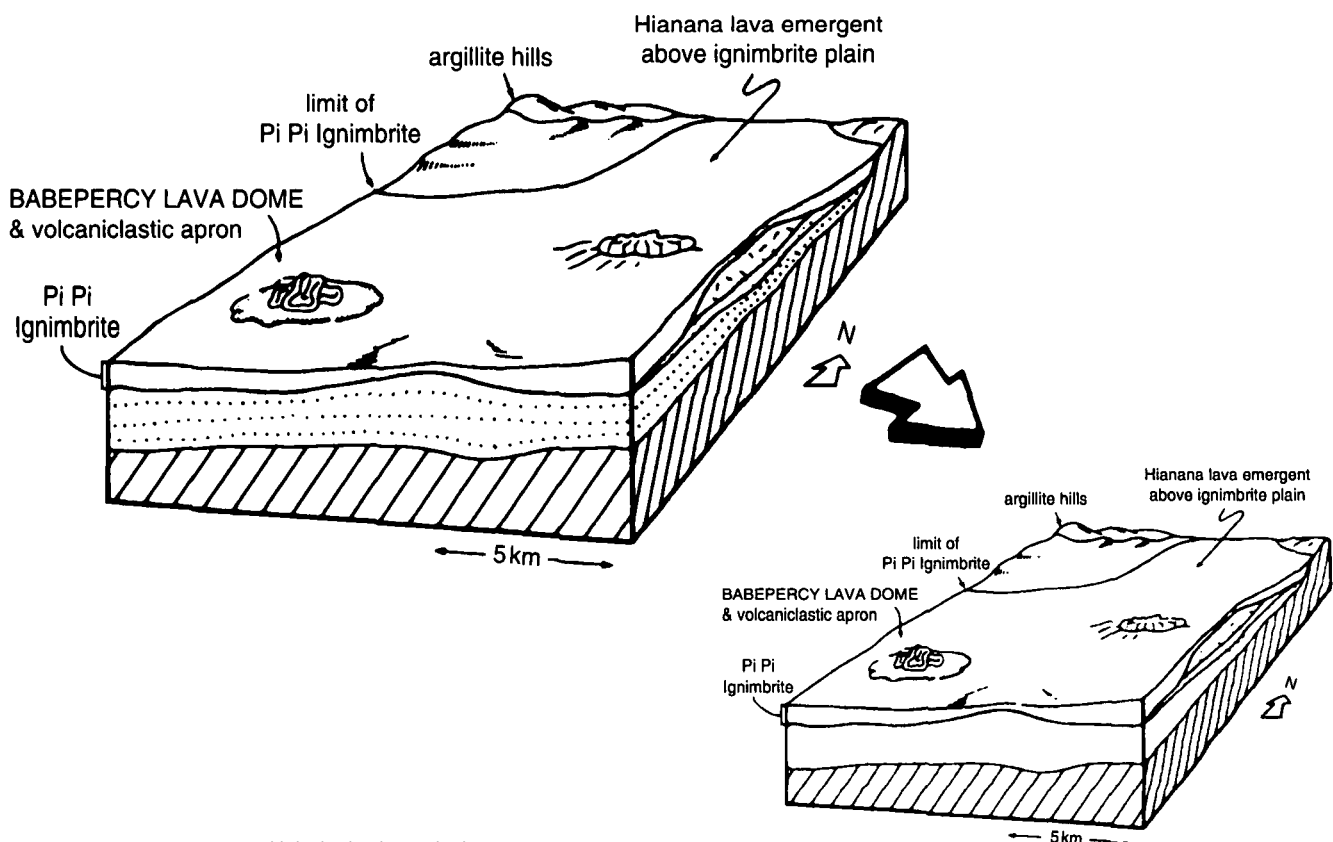
Books should be cited as:

AGER, D. V. 1981. *The Nature of the Stratigraphical Record*, 2nd ed. London: Macmillan, 122 pp.

BOTT, M. H. P. 1973. The evolution of the Atlantic north of the Faroe Islands. In *Implications of Continental Drift to the Earth Sciences*, vol. 1 (eds D. H. Tarling and S. N. Runcorn), pp. 175–89. London, New York: Academic Press.

Unpublished work should normally be referred to in the text in parentheses as, for example, 'private communication' or 'unpub. Ph.D. thesis, Univ. London, 1988', and not included in the reference list unless in the press.

Fifty offprints of each paper will be provided free of charge. Additional offprints may be purchased according to a set scale of charges if ordered when the proofs are returned. Authors of Rapid Communications will receive 10 free offprints; no further copies may be purchased.



Geological Magazine

CONTENTS

- Significance of radiolarian age data to the Mesozoic tectonic and sedimentary evolution of the northern Pindos Mountains, Greece
 JONES, G., DE WEVER, P. & ROBERTSON, A. H. F. 385-400
- The record and stratigraphic implications of organic-walled microfossils from the Ediacaran (terminal Proterozoic) of South Australia
 JENKINS, R. J. F., MCKIRDY, D. M., FOSTER, C. B., O'LEARY, T. & PELL, S. D. 401-410
- Geophysical constraints on the nature of the Highland Boundary Fault Zone in western Scotland
 DENTITH, M. C., TRENCH, A. & BLUCK, B. J. 411-419
- Lower Cambrian acritarchs from northern Spain: the Precambrian-Cambrian boundary and its biostratigraphic implications
 PALACIOS, T. & VIDAL, G. 421-436
- An ocean-ridge type magma chamber at a passive volcanic, continental margin: the Kap Edvard Holm layered gabbro complex, East Greenland
 BERNSTEIN, S., ROSING, M. T., BROOKS, C. K. & BIRD, D. K. 437-456
- Recycled acritarchs as provenance indicators: implications for Caledonian terrane reconstruction
 McCAFFREY, W. D., BARRON, H. F., MOLYNEUX, S. G. & KNELLER, B. C. 457-464
- Evidence for extensive post-Caledonian karst development in southwestern Spitsbergen
 BJØRNERUD, M. 465-469
- Cambrian stratigraphy and stage subdivision in the Holy Cross Mountains, Poland
 ORLOWSKI, S. 471-474
- Superposed structures in the Mona Complex at Rhoscolyn, Ynys Gybi, North Wales
 ROPER, H. 475-490
- RAPID COMMUNICATIONS**
- A new post-early Cambrian archaeocyath from Antarctica
 WOOD, R. A., EVANS, K. R. & ZHURAVLEV, A. YU. 491-495
- Ammonite correlation of the uppermost Campanian of Western Europe, the U.S. Gulf Coast, Atlantic Seaboard and Western Interior, and the numerical age of the base of the Maastrichtian
 KENNEDY, W. J., COBBAN, W. A. & SCOTT, G. R. 497-500
- DISCUSSIONS**
- Discussion of isotopic evidence for the extent of early Proterozoic basement in Scotland and northwest Ireland
 Comment: R. J. MUIR, W. R. FITCHES & A. J. MALTMAN 501-502
 Reply: A. P. DICKIN & D. R. BOWES 502-504
- Discussion on a 'reg' palaeosol from the Lower Triassic of south Devon: stratigraphic and palaeoclimatic implications
 Comment: K. PURVIS 505
 Reply: V. P. WRIGHT, S. MARRIOTT & S. D. VANSTONE 506
- NOTICES** 506
- REVIEWS** 507-510
- PUBLICATIONS RECEIVED** 511-512

© Cambridge University Press 1992

Printed in Great Britain by the University Press, Cambridge