

## Absorption and metabolism of caffeic acid and chlorogenic acid in the small intestine of rats

Sophie Lafay, Christine Morand, Claudine Manach, Catherine Besson and Augustin Scalbert\*

Unité de Nutrition Humaine, Institut National de la Recherche Agronomique, Centre de Clermont-Ferrand/Theix, 63122 Saint Genès-Champanelle, France

(Received 1 June 2005 – Revised 24 November 2005 – Accepted 1 December 2005)

The absorption and metabolism in the small intestine of chlorogenic acid (5-*O*-caffeoylquinic acid), the main phenolic acid in the human diet, and of caffeic acid were studied in rats in order to determine whether chlorogenic acid is directly absorbed or hydrolysed in the small intestine. Chlorogenic and caffeic acids were perfused into a segment of ileum plus jejunum during 45 min (50 µM, 0.75 ml/min) using an *in situ* intestinal perfusion rat model with cannulation of the biliary duct, and were quantified together with their metabolites in perfusion effluent, bile and plasma. The net absorption (inlet flux minus outlet flux of phenolic acids and their metabolites) accounted for 19.5% and 8% of the perfused caffeic and chlorogenic acids, respectively. A minor fraction of the perfused caffeic acid was metabolized in the intestinal wall and secreted back into the gut lumen in the form of ferulic acid (0.5% of the perfused flux). Part of the chlorogenic acid (1.2% of the perfused flux) was recovered in the gut effluent as caffeic acid, showing the presence of trace esterase activity in the gut mucosa. No chlorogenic acid was detected in either plasma or bile, and only low amounts of phenolic acids (less than 0.4%) were secreted in the bile. The present results show that chlorogenic acid is absorbed and hydrolysed in the small intestine. In contrast to numerous flavonoids, absorbed phenolic acids are poorly excreted in the bile or gut lumen. Their bioavailability therefore appears to be governed largely by their uptake into the gut mucosa.

### Caffeic acid: Chlorogenic acid: Intestinal perfusion: Absorption: Rat

Hydroxycinnamic acids are one of the major classes of phenolic compounds. They are present in a large variety of fruits and vegetables (Clifford, 1999; Manach *et al.* 2004). The major representative of hydroxycinnamic acids in food is caffeic acid. It occurs largely conjugated with quinic acid, as in chlorogenic acid (5-*O*-caffeoylquinic acid; Fig. 1). Coffee, one of the most widely consumed beverages in the world, is the major dietary source of chlorogenic acid. Regular coffee-drinkers commonly ingest 0.5–1 g chlorogenic acid/d, corresponding to about 250–500 mg caffeic acid/d (Clifford, 1999).

Caffeic acid and chlorogenic acid have antioxidant properties, illustrated by their ability to scavenge various free radicals when tested *in vitro* (Ohnishi *et al.* 1994; Nardini *et al.* 1995; Abu-Amsha Caccetta *et al.* 1996; Rice-Evans *et al.* 1996; Foley *et al.* 1999; Laranjinha & Cadenas, 1999). *In vivo*, when ingested with the diet, caffeic acid and chlorogenic acid increase the plasma antioxidant capacity, the concentrations of endogenous antioxidants such as vitamin E and the *ex vivo* resistance of lipoproteins to oxidation (Nardini *et al.* 1997; Natella *et al.* 2002; Lafay *et al.* 2005). Chlorogenic acid is also able to reverse the pro-oxidant effects of drugs such as paraquat (Tsuchiya *et al.* 1996). Chlorogenic acid and caffeic acid have been reported to prevent different cancers and CVD in several experimental studies on animal

models (Mori *et al.* 1986; Tanaka *et al.* 1990, 1993; Zhou *et al.* 1993; Suzuki *et al.* 2002).

The biological properties of hydroxycinnamic acids depend on their absorption in the gut and on their metabolism. The absorption of caffeic acid in the small intestine has been well characterized in both experimental animals and in man (Teuchy & Van Sumere, 1971; Camarasa *et al.* 1988; Azuma *et al.* 2000; Olthof *et al.* 2001; Simonetti *et al.* 2001; Scalbert *et al.* 2002), but the bioavailability of chlorogenic acid is more controversial.

In some studies, chlorogenic acid has been detected in urine with a recovery varying from 0.3% to 2.3%, suggesting absorption without structural modification (Cremin *et al.* 2001; Olthof *et al.* 2001; De Maria & Moreira, 2004; Ito *et al.* 2005). Other authors have failed to detect chlorogenic acid in the plasma of both rats and man after its ingestion as a pure compound or in coffee (Choudhury *et al.* 1999; Azuma *et al.* 2000; Nardini *et al.* 2002). Caffeic acid and its *O*-methylated metabolites are commonly found in plasma and urine after ingestion of chlorogenic acid in rats and man, showing that chlorogenic acid is hydrolysed in the body (Azuma *et al.* 2000; Rechner *et al.* 2001a; Nardini *et al.* 2002; Wittemer *et al.* 2005).

Such a reaction could either take place in the gut mucosa or arise from catalysis by the gut microflora. No esterase

\* Corresponding author: Dr A. Scalbert, fax +33 04 73 62 46 38, email scalbert@clermont.inra.fr

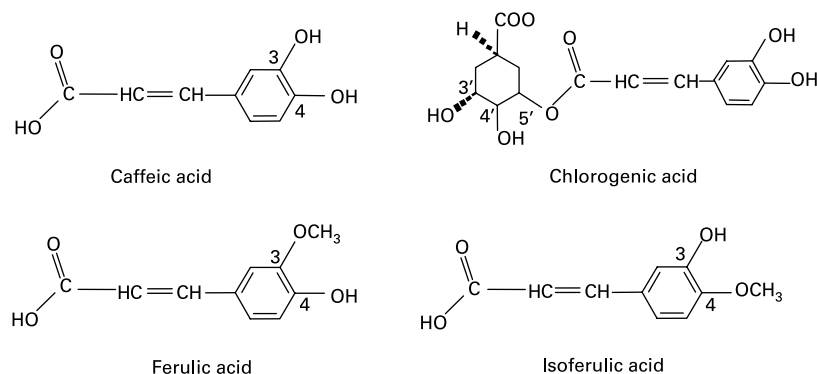


Fig. 1. Chemical structure of caffeic acid, chlorogenic acid, ferulic acid and isoferulic acid.

activity able to hydrolyse chlorogenic acid could be detected in human tissues (intestinal mucosa, liver) or biological fluids (plasma, gastric juice, duodenal fluid) in rats or man (Plumb *et al.* 1999; Azuma *et al.* 2000; Andreasen *et al.* 2001; Olthof *et al.* 2001; Rechner *et al.* 2001b). On the other hand, microflora in the large intestine possess esterase activity towards chlorogenic acid (Couteau *et al.* 2001; Rechner *et al.* 2004). These results suggest that caffeic acid found in plasma originates from the hydrolysis of chlorogenic acid in the colon. This would, however, be inconsistent with the rapid detection (30 min after administration of chlorogenic acid) of caffeic and ferulic acids in the plasma of rats (Azuma *et al.* 2000).

The aim of the present work was therefore to examine whether chlorogenic acid is absorbed or hydrolysed in the small intestine. The absorption and metabolism of chlorogenic acid in the small intestine were explored using an *in situ* intestinal perfusion model (segment of ileum plus jejunum) and compared with those of caffeic acid. Such a model has been used in different laboratories to study the intestinal absorption and metabolism of polyphenols (Crespy *et al.* 1999; Andlauer *et al.* 2000; Sesink *et al.* 2003; Arts *et al.* 2004; Talavera *et al.* 2004). Chlorogenic and caffeic acids were analysed together with their main metabolites in the perfusion effluent, bile and plasma.

## Materials and methods

### Chemicals

$\beta$ -Glucuronidase/sulfatase from *Helix pomatia* (type H<sub>2</sub>) and from *Escherichia coli* (type X-A), chlorogenic acid, caffeic acid and ferulic acid were purchased from Sigma (L'Isle d'Abeau Chesnes, France). Isoferulic acid was purchased from Extrasynthèse (Genay, France).

### Animals and diets

Eight Wistar rats, born at the Institut National de la Recherche Agronomique and weighing approximately 150 g, were housed, two per cage, in temperature-controlled rooms (22°C), with a dark period from 20.00 hours to 08.00 hours and with access to food from 16.00 hours to 08.00 hours. They were fed a standard semi-purified diet (composition,

per kg of diet: 755 g wheat starch, 150 g casein, 50 g peanut oil, 35 g mineral AIN-93M mixture, 10 g vitamin AIN-93 mixture supplemented with 1.36 g choline) for 2 weeks. Animals were maintained and handled according to the recommendations of the National Institute for Agricultural Research Ethics Committee, in accordance with Decree 87-848.

### In situ gut perfusion

Rats were anaesthetized with sodium pentobarbital (40 mg/kg body weight) 24 h after the end of the last meal by intraperitoneal injection, maintained at 37°C on a heat plate and kept alive during the perfusion period. After cannulation of the biliary duct, a perfusion of a jejunal and ileal segment of intestine (from the duodeno-jejunal flexure to 5 cm distal to the ileocaecal valve) was prepared by installing cannulas at each extremity.

This segment was continuously perfused *in situ* with a buffer containing KH<sub>2</sub>PO<sub>4</sub> (5 mmol/l), K<sub>2</sub>HPO<sub>4</sub> (2.5 mmol/l), NaHCO<sub>3</sub> (5 mmol/l), NaCl (50 mmol/l), KCl (50 mmol/l), CaCl<sub>2</sub> (2 mmol/l), MgCl<sub>2</sub> (2 mmol/l), glucose (10 mmol/l) and taurocholic acid (1 mmol/l; pH adjusted at 6.7) and supplemented with 50  $\mu$ M-caffeic acid (*n* 4) or 50  $\mu$ M-chlorogenic acid (*n* 4). A flow rate of about 0.75 ml/min and a temperature of 37°C were maintained during the 45 min of the perfusion (Crespy *et al.* 1999; Andlauer *et al.* 2000; Sesink *et al.* 2003; Arts *et al.* 2004; Talavera *et al.* 2004). The average flow rate was determined for each experiment over the 45 min of perfusion. These quantities of chlorogenic acid perfused correspond to an intake in man of about 500 mg chlorogenic acid (calculated for rats and human subjects consuming, respectively, 20 g and 500 g DM/d). This amount of chlorogenic acid corresponds to three or four cups of coffee (Scalbert & Williamson, 2000).

Both caffeic and chlorogenic acids were quantified in the buffer at the end of the experiment and found to be stable in the buffer throughout the perfusion period. The effluent at the exit of ileum and the bile were collected throughout the 45 min of the perfusion period for analysis of phenolic acids. At the end of the experiment, blood samples were withdrawn from the mesenteric vein into heparinized tubes. Perfusate, bile and plasma samples were acidified with 10 mM-acetic acid and stored at -20°C.

### Analysis of phenolic acids

**Sample treatment.** Perfusate, bile and plasma samples were spiked at 5  $\mu\text{mol/l}$  with sinapic acid or vanillic acid as internal standard. Samples collected after caffeic acid perfusion were acidified to pH 4.9 with 0.1 volume of 0.5 M-sodium acetate containing 2 g ascorbic acid/l (pH 3). Perfusate and bile samples were incubated for 45 min at 37°C, and plasma samples for 4 h at the same temperature, in the presence of  $10^8$  units  $\beta$ -glucuronidase and  $2.5 \times 10^6$  units sulfatase from *H. pomatia* per litre.

The procedure was modified for samples collected after chlorogenic acid perfusion as we noticed that chlorogenic acid was partially hydrolysed by *H. pomatia* enzymes (Ito *et al.* 2005). Samples were then adjusted to pH 6.8 with 0.1 volume of 0.5 M-sodium acetate containing 2 g ascorbic acid/l (pH 4.9). Perfusate and bile samples were incubated for 45 min at 37°C, plasma samples for 4 h at the same temperature, in absence or in the presence of  $2 \times 10^8$  units  $\beta$ -glucuronidase from *E. coli* per litre. No caffeic acid was formed in these conditions, as confirmed by the addition of pure chlorogenic acid to a control plasma containing the enzyme from *E. coli*. Sulfatase activity was also present in the enzyme fraction as observed using a rat plasma sample containing known sulfate esters of quercetin (data not shown).

Samples were extracted by adding 2.85 volumes of methanol–H<sub>2</sub>O–concentrated HCl (70:28:2, by vol.) and centrifuged for 4 min at 12 000g. The resulting supernatant was analysed as described below.

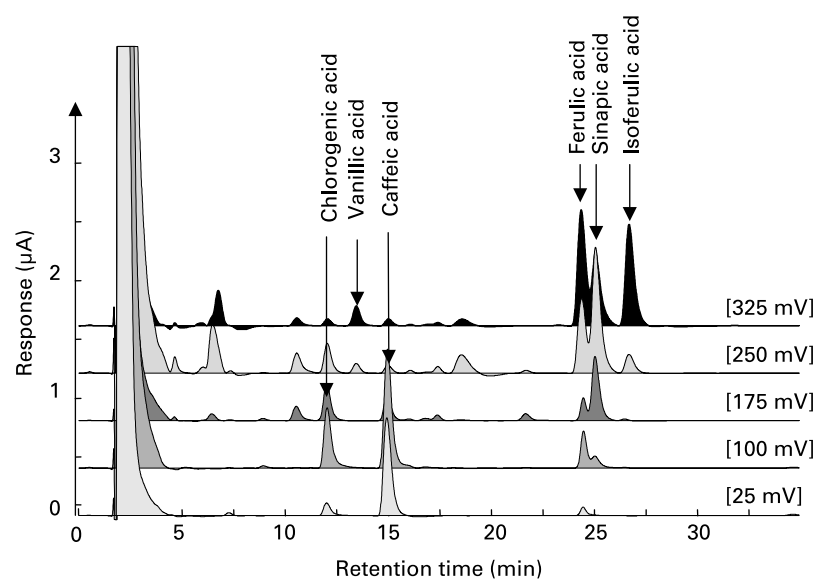
**Determination of the intestinal and biliary fluxes.** All the calculated fluxes were expressed in nmol/min. The fluxes in the effluent were calculated taking into account the intestinal absorption of H<sub>2</sub>O as previously described (Crespy *et al.* 1999). For a given phenolic acid, the net transfer into the enterocyte was evaluated by the difference between the perfused flux and the flux of perfused molecules recovered in the non-hydrolysed effluent at the end of the perfusion.

The secretion of conjugates back into the gut lumen was determined as the difference between the flux of perfused molecules measured in the non-hydrolysed effluent and the flux of total phenolic acids in the hydrolysed effluent. The net absorption was calculated as the difference between the net transfer into the enterocyte and the intestinal secretion of metabolites (*O*-methylated conjugated forms). The biliary secretion of conjugated forms was determined as the product between the biliary flow rate ( $\mu\text{l/min}$ ) and the concentrations of the phenolic acids measured in the bile after enzymatic hydrolysis ( $\mu\text{mol/l}$ ).

**Chromatographic conditions.** The conjugated metabolites of phenolic acids were analysed by HPLC coupled to an eight-electrode CoulArray Model 5600 detector (Eurosep, Cergy, France) with potentials set at 25, 100, 250, 325, 360, 400, 475 and 550 mV. The system was fitted with a 5  $\mu\text{m}$  C-18 Hypersil BDS analytical column (150  $\times$  4.6 mm; Life Sciences International, Cergy, France). Mobile phase A was 5% acetonitrile in 30 mM-NaH<sub>2</sub>PO<sub>4</sub> at pH 3, and mobile phase B was 50% acetonitrile in 30 mM-NaH<sub>2</sub>PO<sub>4</sub> at pH 3. The separation was performed at 35°C. The flow rate was 0.8 ml/min, and the following gradient was applied: linear gradient from 0% to 22% B from 0 to 21 min; linear gradient from 22% to 29% B from 21 to 41 min; 100% B from 41 to 45 min. The identification of phenolic acids was based on the comparison with appropriate commercial standards (Fig. 2). In perfused buffer, detection limits were 0.06  $\mu\text{mol/l}$  for chlorogenic, caffeic and isoferulic acids, and 0.08  $\mu\text{mol/l}$  for ferulic acid. In bile and plasma, detection limits were 0.06  $\mu\text{mol/l}$  for caffeic and isoferulic acids, and 0.08  $\mu\text{mol/l}$  for ferulic acid.

### Data analysis

Data were treated with the Instat statistical program (Instat, San Diego, CA). Values are given as means with their standard errors. An unpaired *t* test or Mann–Whitney test (non-parametric test) was applied to determine differences



**Fig. 2.** Chromatogram of a control plasma spiked with chlorogenic, vanillic, caffeic, ferulic, sinapic and isoferulic acid standards. See text (this page) for details of method.

between values. Differences with a value of  $P < 0.05$  were considered significant.

## Results

### Intestinal metabolism of caffeic acid

When caffeic acid was perfused at 44.6 (SE 1.3) nmol/min into the upper intestinal tract, both caffeic and ferulic acids were recovered in the effluent at the end of perfusion. Their respective fluxes in the non-hydrolysed effluent were 35.7 (SE 1.1) and 0.17 (SE 0.01) nmol/min (Table 1). These two fluxes correspond to respectively 80% and 0.4% of the perfused flux of caffeic acid (Fig. 3). The net transfer of caffeic acid into the enterocyte was 8.8 (SE 0.7) nmol/min, corresponding to 20% of the perfused flux.

When the effluent was treated by a  $\beta$ -glucuronidase/sulfatase, the flux of caffeic acid did not change significantly – 36.7 (SE 1.2) v. 35.7 (SE 1.1) nmol/min in non-hydrolysed effluent – indicating the absence of intestinal secretion of conjugates for caffeic acid. Conversely, the flux of ferulic acid in the effluent significantly increased after enzymatic hydrolysis (0.17 (SE 0.01) v. 0.24 (SE 0.01) nmol/min in non-hydrolysed and hydrolysed effluent;  $P < 0.05$ ), showing a release of ferulic acid conjugates. As the biliary duct had been cannulated before starting perfusion, the ferulic acid and conjugated derivatives found in the effluent at the end of perfusion had an intestinal origin and represented 0.5% of the perfused flux. Thus, the recovery of caffeic acid and its metabolites accounted for 80.5% of the perfused flux. The net absorption of caffeic acid is therefore determined by the difference between the perfused flux of

caffeic acid and the flux of total phenolic acids in the effluent, accounting for 19.5% of the perfused flux.

### Intestinal metabolism of chlorogenic acid

When chlorogenic acid was perfused at 40.4 (SE 0.8) nmol/min into the upper intestinal tract, both chlorogenic and caffeic acids were recovered in the effluent at the end of perfusion. Their respective fluxes in the non-hydrolysed effluent were 36.7 (SE 1.1) nmol/min and 0.23 (SE 0.02) nmol/min (Table 1). These phenolic acids fluxes correspond to 90.8% and 0.6% of the perfused flux of chlorogenic acid respectively (Fig. 3). The net transfer of chlorogenic acid into the enterocyte was 3.7 (SE 0.7) nmol/min, corresponding to 9.2% of the perfused flux.

When the effluent was treated with deconjugating enzymes, the flux of chlorogenic acid was not changed – 36.7 (SE 0.3) v. 36.7 (SE 1.1) nmol/min in non-hydrolysed effluent – indicating the absence of intestinal secretion of conjugates of chlorogenic acid. After enzymatic hydrolysis, the flux of caffeic acid significantly increased (0.48 (SE 0.02) nmol/min;  $P < 0.05$  v. caffeic acid in non-hydrolysed effluent), indicating the presence of caffeic acid conjugates released in the lumen. Free caffeic acid and conjugated derivatives found in the effluent resulted from intestinal activity, and their secretion into the lumen represented 1.2% of perfused flux. Thus, net absorption of chlorogenic acid was 3.2 (SE 0.8) nmol/min and accounted for 8% of the perfused flux.

### Metabolites excreted in the bile after perfusion of hydroxycinnamic acids

Phenolic acids were analysed in the bile after enzymatic deconjugation. Three phenolic acids – caffeic, ferulic and isoferulic acid – were found in the bile after caffeic acid perfusion (Table 2). The respective biliary fluxes were 109 (SE 23) pmol/min, 35.0 (SE 5.0) pmol/min and 26.3 (SE 1.5) pmol/min. Caffeic acid was also found in low concentration in the bile after chlorogenic acid perfusion (Table 2).

### Metabolites recovered in the plasma after perfusion of hydroxycinnamic acids

Phenolic acids were analysed after enzymatic deconjugation in the plasma mesenteric vein. Samples collected after the perfusion of caffeic acid showed the presence of ferulic and isoferulic acids (Table 3). Low amounts of caffeic acid were also detected in the mesenteric vein of two rats. Analysis of the plasma samples collected after chlorogenic acid perfusion showed the presence of isoferulic acid in mesenteric plasma.

## Discussion

Epidemiological and clinical studies have shown that the consumption of coffee, a major dietary source of chlorogenic acids, reduces the risk of non-insulin-dependent diabetes, decreases hyperglycaemia and increases plasma antioxidant capacity (Natella *et al.* 2002; van Dam & Feskens, 2002; Yamaji *et al.* 2004). Coffee polyphenols, particularly chlorogenic acid, could contribute to these effects (Scalbert *et al.* 2005). The biological effects of polyphenols rely largely on their bioavailability (Manach *et al.* 2004), but the bioavailability

**Table 1.** Fluxes in phenolic acids following the *in situ* perfusion of caffeic acid or chlorogenic acid (influent fluxes for caffeic and chlorogenic acid perfusion: 0.89 (SE 0.01) and 0.81 (SE 0.01) ml/min) (Means with their standard errors,  $n$  4)

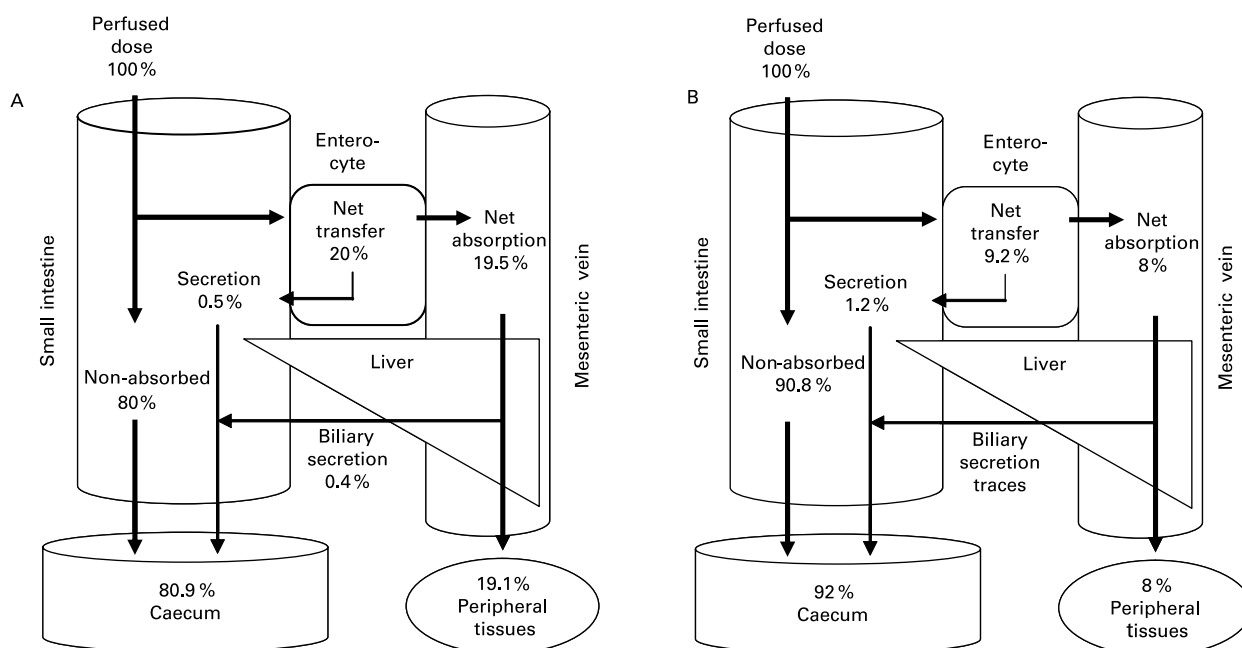
	Caffeic acid perfusion (nmol/min)		Chlorogenic acid perfusion (nmol/min)	
	Mean	SE	Mean	SE
Influent				
Caffeic acid	44.6	1.3	–	
Chlorogenic acid	–		40.4	0.8
Non-hydrolysed effluent (free phenolic acids)				
Chlorogenic acid	–		36.7	1.1
Caffeic acid	35.7	1.1	0.23	0.02
Ferulic acid	0.17	0.01	ND	
Isoferulic acid	ND		ND	
Hydrolysed effluent (free phenolic acids + conjugates)				
Chlorogenic acid	–		36.7	0.3
Caffeic acid	36.7	1.2	0.48*	0.02
Ferulic acid	0.24*	0.01	ND	
Isoferulic acid	ND		ND	
Net transfer†	8.8	0.7	3.7	0.7
Net absorption ‡	7.7	0.4	3.2	0.8

ND, not detected.

\*  $P < 0.05$  v. non-hydrolysed effluent flux.

† Net transfer = perfused flux – non-hydrolysed effluent flux of caffeic or chlorogenic acid.

‡ Net absorption = net transfer – intestinal secretion of metabolites.



**Fig. 3.** Scheme of the fate of caffeic acid (A) and chlorogenic acid (B) at the splanchnic level: a comparison of the percentages of these hydroxycinnamic acids after perfusion of a jejunoileal segment. For caffeic acid perfusion, the percentage of metabolite secretion into the gut lumen was calculated from fluxes of free ferulic acid and its conjugates found in the hydrolysed effluent.

and metabolism of chlorogenic acid have been poorly studied. The *in situ* perfusion of caffeic and chlorogenic acids into a segment of the upper intestinal tract of rats (jejunum plus ileum) allows us to compare their absorption in conditions close to normal physiology.

The esterification of caffeic acid, as with chlorogenic acid, more than halved its absorption: 19.5% and 8% of the perfused flux for caffeic and chlorogenic acids, respectively, were absorbed. Using the same model of perfusion as used here, the intestinal absorption of ferulic acid has been determined and was higher than that of caffeic acid (56.1% *v.* 19.5% of the perfused flux respectively; Adam *et al.* 2002), showing that the *O*-methylation of caffeic acid increases its transfer through the intestinal barrier. Similar conclusions were obtained by perfusing an isolated rat intestinal segment (Spencer *et al.* 1999). The values for net transfer of caffeic and chlorogenic acids through the small intestine also appear much lower than those observed for flavonoids, using the same *in situ* perfusion model, which

varied from 35.2% for catechin to 78% for kaempferol (Crespy *et al.* 2003).

The absorption of different phenolic acids has also been studied with Caco-2 cell monolayers (Konishi *et al.* 2003a,b; Konishi & Kobayashi, 2004). The transepithelial flux of chlorogenic acid was found to be much lower than that of caffeic acid, which was itself lower than that of ferulic acid, in agreement with the present results. Free phenolic acids would largely be absorbed through an active mechanism involving monocarboxylic acid transporters, whereas the absorption of chlorogenic acid would follow the paracellular route. In experiments with volunteers who had undergone colonic ablation, chlorogenic acid absorption was also three times lower than that of caffeic acid, a proportion comparable to the one observed in the present work (Olthof *et al.* 2001).

Chlorogenic acid has been identified by several authors in urine after the ingestion of coffee or pure chlorogenic acid, suggesting a direct absorption in the gut (Cremin *et al.*

**Table 2.** Biliary flux of phenolic acids after *in situ* perfusion of caffeic acid or chlorogenic acid\* (Means and their standard errors, *n* 4)

	Caffeic acid perfusion (pmol/min)		Chlorogenic acid perfusion (pmol/min)	
	Mean	SE	Mean	SE
Caffeic acid	109	23	3.0	1.3
Ferulic acid	35.0	5.0	ND	
Isoferulic acid	26.3	1.5	ND	

ND, not detected.

\* Biliary flux = concentration of (free + conjugated) phenolic acid × biliary flow. Biliary flow was 15.1 (SE 2.3) μl/min for caffeic acid and 15.6 (SE 2.6) μl/min for chlorogenic acid.

**Table 3.** Concentrations of caffeic acid metabolites and chlorogenic acid metabolites in the mesenteric plasma of rats after perfusion with caffeic acid or chlorogenic acid (Means and their standard errors, *n* 4)

	Caffeic acid (μM)		Chlorogenic acid (μM)	
	Mean	SE	Mean	SE
Caffeic acid	Trace		ND	
Ferulic acid	0.71	0.04	ND	
Isoferulic acid	0.14	0.01	0.12	0.02
Chlorogenic acid	ND		ND	

ND, not detected (limits of detection for caffeic, chlorogenic and isoferulic acids 0.06 μM and for ferulic acid 0.08 μM).

2001; Olthof *et al.* 2001, 2003; Gonthier *et al.* 2003; Ito *et al.* 2005). However, in many studies, and in agreement with the present data, it was not detected in the plasma or bile (Booth *et al.* 1957; Bourne & Rice-Evans, 1998; Choudhury *et al.* 1999; Azuma *et al.* 2000; Nardini *et al.* 2002; Rechner *et al.* 2002). This ester of caffeic acid could be hydrolysed in the gut before absorption, as suggested by the presence of free caffeic acid in the intestinal effluent after the perfusion of chlorogenic acid (Table 3) and by the reported presence of tissue esterases in the upper intestinal mucosa (Andreasen *et al.* 2001; Kern *et al.* 2003). However, the low levels of caffeic acid found in the effluent (1.2%) during chlorogenic acid perfusion indicate that the main site of hydrolysis is very likely the lower intestinal tract (caecum or colon), with its microbial esterases (Couteau *et al.* 2001; Gonthier *et al.* 2003).

The site of absorption of chlorogenic acid in the gut can also be discussed with regard to the kinetics of absorption in studies involving animals or man. When chlorogenic acid was given by gastric intubation to rats, plasma concentrations of caffeic and ferulic acid were maximal 30 min after gavage (Azuma *et al.* 2000). In man, a maximum plasma concentration of caffeic acid was reached 1 h after coffee ingestion (Nardini *et al.* 2002). This rapid appearance of phenolic acids in the plasma suggests absorption in the upper part of the gastrointestinal tract. Owing to an insufficient sensitivity for detecting the relatively low amounts of phenolic acids absorbed from chlorogenic acid in the present study, only isoferulic acid was found in the mesenteric plasma.

A portion of the phenolic acids absorbed is quickly metabolized and in particular methylated into ferulic acid and isoferulic acid, a reaction catalysed by catechol-*O*-methyltransferase previously identified in the intestine (Männistö & Kaakkola, 1999). Some of this ferulic acid was secreted back into the gut lumen during caffeic acid perfusion. Ferulic and isoferulic acids identified in the bile could originate from both the secretion of ferulic acid formed in the gut mucosa and from liver catechol-*O*-methyltransferase activity. With chlorogenic acid perfusion, only caffeic acid was found in the intestinal lumen and in the bile. Isoferulic acid could be detected in plasma. This can probably be explained by the relatively low amounts of phenolic acid absorbed from chlorogenic acid.

The relative proportions of ferulic acid and isoferulic acid in both bile and plasma show a preferential *O*-methylation in the *meta* position, in agreement with previous studies with rats (Gonthier *et al.* 2003; Wittemer & Veit, 2003). A similar preference for methylation in the *meta* position is known for other polyphenols with catechol groups such as quercetin, catechin or cyanidin (Manach *et al.* 1999; Felgines *et al.* 2002).

Other reactions involving phenolic acids also take place in the gut mucosa. Phenolic acids were determined in the gut effluent with and without enzymatic hydrolysis to look for the presence of glucuronides and sulfate esters formed in the mucosa and secreted back into the gut lumen. Enzymatic deconjugation significantly increased the level of ferulic acid recovered in the effluent after caffeic acid perfusion. However, ferulic acid conjugates accounted for only 0.16% of the perfused flux of caffeic acid. Similarly, the level of caffeic

acid conjugates determined in the effluent after the perfusion of chlorogenic acid represented 0.6% of the perfused flux. Similar experiments, carried out with different flavonoids, have shown wide variations in the levels of conjugates secreted back to the gut lumen, from 0% of the perfused flux for catechin to 52% for quercetin (Crespy *et al.* 2003). The present results show that the secretion of hydroxycinnamic acid conjugates into the gut lumen is low compared with that of some flavonoids, in agreement with a previous study on ferulic acid (Adam *et al.* 2002).

The biliary excretion of hydroxycinnamic acids has previously been established by liver perfusion or intraperitoneal injection of caffeic acid in the rat (Scheline, 1968; Gumbinger *et al.* 1993). In the present work, biliary excretion did not exceed 0.4% of the perfused dose of caffeic acid, suggesting a limited contribution of this route.

The splanchnic metabolism of caffeic and chlorogenic acids is summarised in Fig. 3. A total of 19.5% of the caffeic acid and 8% of the chlorogenic acid perfused through the small intestine reached the mesenteric blood. A minute fraction of the phenolic acids transferred into the gut mucosa was secreted back to the intestinal lumen as ferulic acid for caffeic acid perfusion and caffeic acid for chlorogenic acid perfusion. This result demonstrates for the first time the *in vivo* hydrolysis of chlorogenic acid in the gut mucosa, but esterase activity towards this phenolic acid appears very low. Phenolic acids found in the mesenteric blood reached the liver, where a low fraction was excreted into the bile in its unchanged or *O*-methylated form, showing that biliary excretion is not the major route of excretion for phenolic acids. Therefore, the fraction of phenolic acids reaching the peripheral tissues (19.1% and 8% for caffeic and chlorogenic acid, respectively) depends largely on the absorption through the gut barrier.

The present results for caffeic and chlorogenic acids can be compared with those previously obtained with other polyphenols using the same *in situ* perfusion model (Crespy *et al.* 2003). For example, the fractions of eryodictiol and quercetin reaching the peripheral tissues were similar (20% and 9%, respectively) to that observed here for phenolic acids. However, their splanchnic metabolism differs significantly from that of caffeic and chlorogenic acids. Quercetin is characterized by high intestinal uptake (67%), high secretion back into the gut lumen (52%) and significant secretion into the bile (6%). Eryodictiol also showed a high intestinal uptake (59%), a moderate secretion back into the gut lumen and a high biliary excretion (23%). Caffeic and chlorogenic acids also differ from ferulic acid, which showed a significant excretion through the bile (6%; Adam *et al.* 2002). Therefore, the factors determining the bioavailability of polyphenols in inner body tissues vary according to polyphenols. The bioavailability of caffeic and chlorogenic acids appears to be largely determined by their uptake into the gut mucosa, as previously reported for catechin (Crespy *et al.* 2003).

#### Acknowledgements

This work was supported by Berkem industry, Le Marais Ouest, 24680 Gardonne, France.

## References

- Abu-Amsha Caccetta AR, Croft KD, Puddey IB, Proudfoot JM & Beilin LJ (1996) Phenolic content of various beverages determines the extent of inhibition of human serum and low-density lipoprotein oxidation *in vitro*: identification and mechanism of action of some cinnamic acid derivatives from red wine. *Clin Sci* **91**, 449–458.
- Adam A, Crespy V, Levrat-Verny MA, Leenhardt F, Leuillet M, Demigne C & Remesy C (2002) The bioavailability of ferulic acid is governed primarily by the food matrix rather than its metabolism in intestine and liver in rats. *J Nutr* **132**, 1962–1968.
- Andlauer W, Kolb J & Furst P (2000) Absorption and metabolism of genistin in the isolated rat small intestine. *FEBS Lett* **475**, 127–130.
- Andreasen MF, Kroon PA, Williamson G & Garcia-Conesa MT (2001) Esterase activity able to hydrolyze dietary antioxidant hydroxycinnamates is distributed along the intestine of mammals. *J Agric Food Chem* **49**, 5679–5684.
- Arts IC, Sesink AL, Faassen-Peters M & Hollman PC (2004) The type of sugar moiety is a major determinant of the small intestinal uptake and subsequent biliary excretion of dietary quercetin glycosides. *Br J Nutr* **91**, 841–847.
- Azuma K, Ippoushi K, Nakayama M, Ito H, Higashio H & Terao J (2000) Absorption of chlorogenic acid and caffeic acid in rats after oral administration. *J Agric Food Chem* **48**, 5496–5500.
- Booth AN, Emerson OH, Jones FT & DeEds F (1957) Urinary metabolites of caffeic and chlorogenic acids. *J Biol Chem* **229**, 51–59.
- Bourne LC & Rice-Evans CA (1998) Urinary detection of hydroxycinnamates and flavonoids in humans after high dietary intake of fruit. *Free Radic Res* **28**, 429–438.
- Camarasa J, Escubedo E & Adzet T (1988) Pharmacokinetics of caffeic acid in rats by a high-performance liquid chromatography method. *J Pharm Biomed Anal* **6**, 503–510.
- Choudhury R, Srari SK, Debnam E & Rice-Evans CA (1999) Urinary excretion of hydroxycinnamates and flavonoids after oral and intravenous administration. *Free Radic Biol Med* **27**, 278–286.
- Clifford MN (1999) Chlorogenic acids and other cinnamates – nature, occurrence and dietary burden. *J Sci Food Agric* **79**, 362–372.
- Couteau D, McCartney AL, Gibson GR, Williamson G & Faulds CB (2001) Isolation and characterization of human colonic bacteria able to hydrolyse chlorogenic acid. *J Appl Microbiol* **90**, 873–881.
- Cremin P, Kasim-Karakas S & Waterhouse AL (2001) Lc/es-ms detection of hydroxycinnamates in human plasma and urine. *J Agric Food Chem* **49**, 1747–1750.
- Crespy V, Morand C, Besson C, Cotelle N, Vezin H, Demigne C & Remesy C (2003) The splanchnic metabolism of flavonoids highly differed according to the nature of the compound. *Am J Physiol Gastrointest Liver Physiol* **284**, G980–G988.
- Crespy V, Morand C, Manach C, Besson C, Demigne C & Remesy C (1999) Part of quercetin absorbed in the small intestine is conjugated and further secreted in the intestinal lumen. *Am J Physiol* **277**, G120–G126.
- De Maria CAB & Moreira RFA (2004) Analytical methods for chlorogenic acid. *Quim Nova* **27**, 586–592.
- Felgines C, Texier O, Besson C, Fraisse D, Lamaison JL & Remesy C (2002) Blackberry anthocyanins are slightly bioavailable in rats. *J Nutr* **132**, 1249–1253.
- Foley S, Navaratnam S, McGarvey DJ, Land EJ, Truscott TG & Rice-Evans CA (1999) Singlet oxygen quenching and the redox properties of hydroxycinnamic acids. *Free Radic Biol Med* **26**, 1202–1208.
- Gonthier MP, Verny MA, Besson C, Remesy C & Scalbert A (2003) Chlorogenic acid bioavailability largely depends on its metabolism by the gut microflora in rats. *J Nutr* **133**, 1853–1859.
- Gumbinger HG, Vahlensieck U & Winterhoff H (1993) Metabolism of caffeic acid in the isolated perfused rat liver. *Planta Med* **59**, 491–493.
- Ito H, Gonthier MP, Manach C, Morand C, Mennen L, Rémésy C & Scalbert A (2005) Polyphenol levels in human urine after intake of six different polyphenol-rich beverages. *Br J Nutr* **94**, 500–509.
- Kern SM, Bennett RN, Needs PW, Mellon FA, Kroon PA & Garcia-Conesa MT (2003) Characterization of metabolites of hydroxycinnamates in the *in vitro* model of human small intestinal epithelium caco-2 cells. *J Agric Food Chem* **51**, 7884–7891.
- Konishi Y & Kobayashi S (2004) Transepithelial transport of chlorogenic acid, caffeic acid, and their colonic metabolites in intestinal caco-2 cell monolayers. *J Agric Food Chem* **52**, 2518–2526.
- Konishi Y, Kobayashi S & Shimizu M (2003a) Transepithelial transport of *p*-coumaric acid and gallic acid in Caco-2 cell monolayers. *Biosci Biotechnol Biochem* **67**, 2317–2324.
- Konishi Y, Kubo K & Shimizu M (2003b) Structural effects of phenolic acids on the transepithelial transport of fluorescein in caco-2 cell monolayers. *Biosci Biotechnol Biochem* **67**, 2014–2017.
- Lafay S, Gueux E, Rayssiguier Y, Mazur A, Rémésy C & Scalbert A (2005) Caffeic acid inhibits oxidative stress and reduces hypercholesterolemia induced by iron overload in rats. *Int J Vitam Nutr Res* **75**, 119–125.
- Laranjinha J & Cadenas E (1999) Redox cycles of caffeic acid,  $\alpha$ -tocopherol, and ascorbate: implications for protection of low-density lipoproteins against oxidation. *IUBMB Life* **48**, 57–65.
- Manach C, Scalbert A, Morand C, Rémésy C & Jimenez L (2004) Polyphenols – food sources and bioavailability. *Am J Clin Nutr* **79**, 727–747.
- Manach C, Texier O, Morand C, Crespy V, Regeat F, Demigne C & Remesy C (1999) Comparison of the bioavailability of quercetin and catechin in rats. *Free Radic Biol Med* **27**, 1259–1266.
- Männistö PT & Kaakkola S (1999) Catechol-*O*-methyltransferase (COMT): biochemistry, molecular biology, pharmacology, and clinical efficacy of the new selective COMT inhibitors. *Pharmacol Rev* **51**, 593–628.
- Mori H, Tanaka T, Shima H, Kuniyasu T & Takahashi M (1986) Inhibitory effect of chlorogenic acid on methylazoxymethanol acetate-induced carcinogenesis in large intestine and liver of hamsters. *Cancer Lett* **30**, 49–54.
- Nardini M, Cirillo E, Natella F & Scaccini C (2002) Absorption of phenolic acids in humans after coffee consumption. *J Agric Food Chem* **50**, 5735–5741.
- Nardini M, Daquino M, Tomassi G, Gentili V, Difelice M & Scaccini C (1995) Inhibition of human low-density lipoprotein oxidation by caffeic acid and other hydroxycinnamic acid derivatives. *Free Radic Biol Med* **19**, 541–552.
- Nardini M, Natella F, Gentili V, DiFelice M & Scaccini C (1997) Effect of caffeic acid dietary supplementation on the antioxidant defense system in rat: an *in vivo* study. *Arch Biochem Biophys* **342**, 157–160.
- Natella F, Nardini M, Giannetti I, Dattilo C & Scaccini C (2002) Coffee drinking influences plasma antioxidant capacity in humans. *J Agric Food Chem* **50**, 6211–6216.
- Ohnishi M, Morishita H, Iwahashi H, Toda S, Shirataki Y, Kimura M & Kido R (1994) Inhibitory effects of chlorogenic acids on linoleic acid peroxidation and haemolysis. *Phytochemistry* **36**, 579–583.
- Olthof MR, Hollman PC, Buijsman MN, van Amelsvoort JM & Katan MB (2003) Chlorogenic acid, quercetin-3-rutinoside and black tea phenols are extensively metabolized in humans. *J Nutr* **133**, 1806–1814.
- Olthof MR, Hollman PCH & Katan MB (2001) Chlorogenic acid and caffeic acid are absorbed in humans. *J Nutr* **131**, 66–71.
- Plumb GW, Garcia-Conesa MT, Kroon PA, Rhodes M, Ridley S & Williamson G (1999) Metabolism of chlorogenic acid by human plasma, liver, intestine and gut microflora. *J Sci Food Agric* **79**, 390–392.

- Rechner AR, Kuhnle G, Bremner P, Hubbard GP, Moore KP & Rice-Evans CA (2002) The metabolic fate of dietary polyphenols in humans. *Free Radic Biol Med* **33**, 220–235.
- Rechner AR, Pannala AS & Rice-Evans CA (2001a) Caffeic acid derivatives in artichoke extract are metabolised to phenolic acids *in vivo*. *Free Radic Res* **35**, 195–202.
- Rechner AR, Smith MA, Kuhnle G, Gibson GR, Debnam ES, Srai SK, Moore KP & Rice-Evans CA (2004) Colonic metabolism of dietary polyphenols: influence of structure on microbial fermentation products. *Free Radic Biol Med* **36**, 212–225.
- Rechner AR, Spencer JP, Kuhnle G, Hahn U & Rice-Evans CA (2001b) Novel biomarkers of the metabolism of caffeic acid derivatives *in vivo*. *Free Radic Biol Med* **30**, 1213–1222.
- Rice-Evans CA, Miller NJ & Paganga G (1996) Structure–antioxidant activity relationships of flavonoids and phenolic acids. *Free Rad Biol Med* **20**, 933–956.
- Scalbert A, Manach C, Morand C, Rémésy C & Jiménez L (2005) Dietary polyphenols and the prevention of diseases. *Crit Rev Food Sci Nutr* **45**, 287–306.
- Scalbert A, Morand C, Manach C & Rémésy C (2002) Absorption and metabolism of polyphenols in the gut and impact on health. *Biomed Pharmacother* **56**, 276–282.
- Scalbert A & Williamson G (2000) Dietary intake and bioavailability of polyphenols. *J Nutr* **130**, 20735–20855.
- Scheline RR (1968) Metabolism of phenolic acids by the rat intestinal microflora. *Acta Pharm Toxicol* **26**, 189.
- Sesink AL, Arts IC, Faassen-Peters M & Hollman PC (2003) Intestinal uptake of quercetin-3-glucoside in rats involves hydrolysis by lactase phlorizin hydrolase. *J Nutr* **133**, 773–776.
- Simonetti P, Gardana C & Pietta P (2001) Caffeic acid as biomarker of red wine intake. *Methods Enzymol* **335**, 122–130.
- Spencer JP, Chowrimootoo G, Choudhury R, Debnam ES, Srai SK & Rice-Evans C (1999) The small intestine can both absorb and glucuronidate luminal flavonoids. *FEBS Lett* **458**, 224–230.
- Suzuki A, Kagawa D, Ochiai R, Tokimitsu I & Saito I (2002) Green coffee bean extract and its metabolites have a hypotensive effect in spontaneously hypertensive rats. *Hypertens Res* **25**, 99–107.
- Talavera S, Felgines C, Texier O, Besson C, Manach C, Lamaison JL & Rémésy C (2004) Anthocyanins are efficiently absorbed from the small intestine in rats. *J Nutr* **134**, 2275–2279.
- Tanaka T, Kojima T, Kawamori T, Wang A, Suzui M, Okamoto K & Mori H (1993) Inhibition of 4-nitroquinoline-1-oxide-induced rat tongue carcinogenesis by the naturally occurring plant phenolics caffeic, ellagic, chlorogenic and ferulic acids. *Carcinogenesis* **14**, 1321–1325.
- Tanaka T, Nishikawa A, Shima H, Sugie S, Shinoda T, Yoshimi N, Iwata H & Mori H (1990) Inhibitory effects of chlorogenic acid, reserpine, polyphenolic acid (E-5166), or coffee on hepatocarcinogenesis in rats and hamsters. *Basic Life Sci* **52**, 429–440.
- Teuchy H & Van Sumere CF (1971) The metabolism of (1- 14 C) phenylalanine, (3- 14 C) cinnamic acid and (2- 14 C) ferulic acid in the rat. *Arch Int Physiol Biochim* **79**, 589–618.
- Tsuchiya T, Suzuki O & Igarashi K (1996) Protective effects of chlorogenic acid on paraquat-induced oxidative stress in rats. *Biosci Biotechnol Biochem* **60**, 765–768.
- van Dam RM & Feskens EJ (2002) Coffee consumption and risk of type 2 diabetes mellitus. *Lancet* **360**, 1477–1478.
- Wittemer SM, Ploch M, Windeck T, Muller SC, Drewelow B, Derendorf H & Veit M (2005) Bioavailability and pharmacokinetics of caffeoylquinic acids and flavonoids after oral administration of artichoke leaf extracts in humans. *Phytomedicine* **12**, 28–38.
- Wittemer SM & Veit M (2003) Validated method for the determination of six metabolites derived from artichoke leaf extract in human plasma by high-performance liquid chromatography–coulometric-array detection. *J Chromatogr B Analyt Technol Biomed Life Sci* **793**, 367–375.
- Yamaji T, Mizoue T, Tabata S, Ogawa S, Yamaguchi K, Shimizu E, Mineshita M & Kono S (2004) Coffee consumption and glucose tolerance status in middle-aged Japanese men. *Diabetologia* **47**, 2145–2151.
- Zhou J, Ashoori F, Suzuki S, Nishigaki I & Yagi K (1993) Protective effect of chlorogenic acid on lipid-peroxidation induced in the liver of rats by carbon-tetrachloride or Co-60-irradiation. *J Clin Biochem Nutr* **15**, 119–125.