

THE
GEOLOGICAL MAGAZINE.

NEW SERIES.

DECADE V. VOL. IV.

JANUARY—DECEMBER, 1907.

THE
GEOLOGICAL MAGAZINE

OR
Monthly Journal of Geology.

WITH WHICH IS INCORPORATED
THE GEOLOGIST.

NOS. DXI TO DXXII.

EDITED BY

HENRY WOODWARD, LL.D., F.R.S., V.P.Z.S., F.G.S.

LATE OF THE BRITISH MUSEUM OF NATURAL HISTORY; PRESIDENT OF THE
PALÆONTOGRAPHICAL SOCIETY;

MEMBER OF THE LYCEUM OF NATURAL HISTORY, NEW YORK; AND OF THE AMERICAN PHILOSOPHICAL
SOCIETY, PHILADELPHIA; HONORARY MEMBER OF THE YORKSHIRE PHILOSOPHICAL SOCIETY;
OF THE GEOLOGISTS' ASSOCIATION, LONDON; OF THE INSTITUTION OF MINING AND
METALLURGY, LONDON; OF THE GEOLOGICAL SOCIETIES OF EDINBURGH,
GLASGOW, HALIFAX, LIVERPOOL, AND SOUTH AFRICA; CORRESPONDING
MEMBER OF THE GEOLOGICAL SOCIETY OF BELGIUM; OF THE
IMPERIAL SOCIETY OF NATURALISTS OF MOSCOW; OF
THE NATURAL HISTORY SOCIETY OF MONTREAL;
AND OF THE MALACOLOGICAL
SOCIETY OF BELGIUM.

ASSISTED BY

WILFRID H. HUDLESTON, M.A., F.R.S., F.G.S., F.L.S., F.C.S.

GEORGE J. HINDE, PH.D., F.R.S., F.G.S., &c.

AND

HORACE BOLINGBROKE WOODWARD, F.R.S., F.G.S., &c.

NEW SERIES. DECADE V. VOL. IV.

JANUARY—DECEMBER, 1907.



LONDON:

MESSRS. DULAU & CO., 37, SOHO SQUARE, W.
1907.

HERTFORD :

PRINTED BY STEPHEN AUSTIN AND SONS, LTD.

LIST OF PLATES.

| PLATE | FACING PAGE |
|--------------------------------------------------------------------------------------------------------------------------------------|-------------|
| I. Portrait of Sir A. Geikie, D.C.L., Sc.D., Sec. R. S., President of the Geological Society of London (1890-2 and 1906-8) | 1 |
| II. Views of Volcanoes of Nevado de Toluca and Jorullo in Mexico | 13 |
| III. Portrait of William Whitaker, B.A. Lond., F.R.S. | 49 |
| IV. Crustacea, etc., from Girvan | 109 |
| V. Metamorphism of Chalk, Scawt Hill, Co. Antrim | 148 |
| VI. New Fossils from Haverfordwest | 210 |
| VII. Upper Cretaceous Fish-remains from Brazil | 196 |
| VIII. Section showing relations of <i>Ceratopyge</i> Series and underlying Beds, west coast of Öland, Sweden | 257 |
| IX. Erosion Pockets of 'Korrosionsgrupper,' Ulunda Stenbrot, Varnhems Kloster, Vester Götland | 267 |
| X. Sketch-map of Southern Scandinavia, showing distribution of Lower Palæozoic Rocks | 296 |
| XI. Remains and Impressions of Ears of Maize in Basalt, Morelia, Mexico | 219 |
| XII. Portrait of Professor H. G. Seeley, F.R.S., F.L.S., F.G.S., etc. | 241 |
| XIII. Two new species of <i>Eurypterus</i> , Coal-measures, Ilkeston, Derbyshire | 282 |
| XIV. Plant-remains in Basalt, Bo'ness Coalfield, Linlithgowshire | 220 |
| XV. Reconstructed Skeleton of <i>Diprotodon australis</i> , Owen | 337 |
| XVI. John Francis Walker, M.A., F.G.S. | 380 |
| XVII. <i>Lichas melmerbiensis</i> , sp. nov., Dufton Shales, near Melmerby | 400 |
| XVIII. <i>Pygocephalus Cooperi</i> , Huxley, Coal-measures, Coseley, near Dudley | 407 |
| XIX. Labyrinthodont Reptilian Remains, Upper Karroo, Cape Colony | 436 |
| XX. Fossil Plants from South Africa | 481 |
| XXI. Fossil Plants from South Africa | 487 |
| XXII. Eastern end of the Tygerberg Anticline, Cape Colony | 489 |
| XXIII. Photographs of thin slices of Ice, and reproductions of surface-markings on Glacier Ice in Ice-caves | 529 |
| XXIV. Reproductions of surface-markings on Glacier Ice in Ice-caves | 531 |

LIST OF ILLUSTRATIONS IN THE TEXT.

| | PAGE |
|----------------------------------------------------------------------------------------------------|----------|
| Pipe-amygdales from the Drakensberg | 14 |
| Vesicle cylinders in diabasic lava, Barkly West | 15 |
| Evolution of <i>Stomatopora dichotomoides</i> (l'Orbigny) | 22 |
| Section at Griffin's quarry, Rock Hill, Worcestershire | 30 |
| <i>Prosopon Richardsoni</i> , H. Woodw., sp. nov. | 80 |
| <i>Geniohyus mirus</i> , Andrews, right ramus of mandible | 98 |
| <i>Saghatarium magnum</i> , Andrews, left ramus of mandible | 99 |
| Section of Stonebarrow Cliff, Charmouth | 151 |
| Zone of <i>Hoplites interruptus</i> on Black Ven and Stonebarrow | 153 |
| Variation in thickness of <i>Hoplites</i> zone on Black Ven, Stonebarrow, and Golden Cap | 155 |
| Field of Eyepiece | 172 |
| Map of area of the Charleston Earthquake of August 31st, 1886 | 199 |
| Skull of <i>Ophthalmosaurus icenicus</i> , Seeley | 203, 204 |
| Right fore-limb of <i>Ophthalmosaurus icenicus</i> , Seeley | 205 |
| Right ischio-pubic bone of <i>Ophthalmosaurus icenicus</i> , Seeley | 206 |
| Left hind-limb of <i>Ophthalmosaurus icenicus</i> , Seeley | 207 |
| Map of Blackheath and Greenwich District | 213 |
| <i>Clathropteris egyptiaca</i> , A. C. Seward, sp. nov. | 253 |
| <i>Weichselia?</i> sp. | 255 |
| Fragments of pinnae of fern from Wadi Araba | 256 |
| Coracoid of <i>Metriorhynchus superciliosus</i> (Desl.) | 317 |
| Sketch-map of part of Zululand | 347 |
| Sketch-map of North-East Anglesey | 349 |
| <i>Actinocamax Blackmorei</i> , Crick, n.sp. | 391 |
| <i>Actinocamax</i> sp. | 395 |
| Restored figure of <i>Lichas melmerbiensis</i> , sp. nov. | 397 |
| <i>Pygocephalus Cooperi?</i> (Huxley), Coal-measures, Sparth (male individual) | 405 |

| | PAGE |
|-----------------------------------------------------------------------------------------------------------------|------|
| <i>Pygocephalus Parkeri</i> , H. Woodw., sp. nov. | 406 |
| Microphotograph of a collodion film | 438 |
| Section of Cliff at New-town Head, Co. Waterford | 502 |
| Edge-view of pile of paper-strips | 507 |
| Same papers folded, showing displacement of lines | 507 |
| The same, showing the distortion of minor folds | 508 |
| <i>Bellinurus Baldwini</i> , H. Woodw., sp. nov., Coal-measures, Sparth, near Rochdale | 540 |
| <i>B. longicaudatus</i> , H. Woodw., sp. nov., Coal-measures, Sparth, near Rochdale | 541 |
| <i>Eoscorpis (Mazonia) Wardingleyi</i> , H. Woodw., sp. nov., Coal-measures, Sparth, near Rochdale | 543 |
| <i>Geralinura Sutcliffei</i> , H. Woodw., sp. nov., Coal-measures, Sparth, near Rochdale | 545 |
| <i>Anthracomartus trilobitus</i> , Scudder, Coal-measures, Sparth, near Rochdale | 548 |
| Section of Drift at Head of Rathmoylan Cove | 552 |

ERRATA.

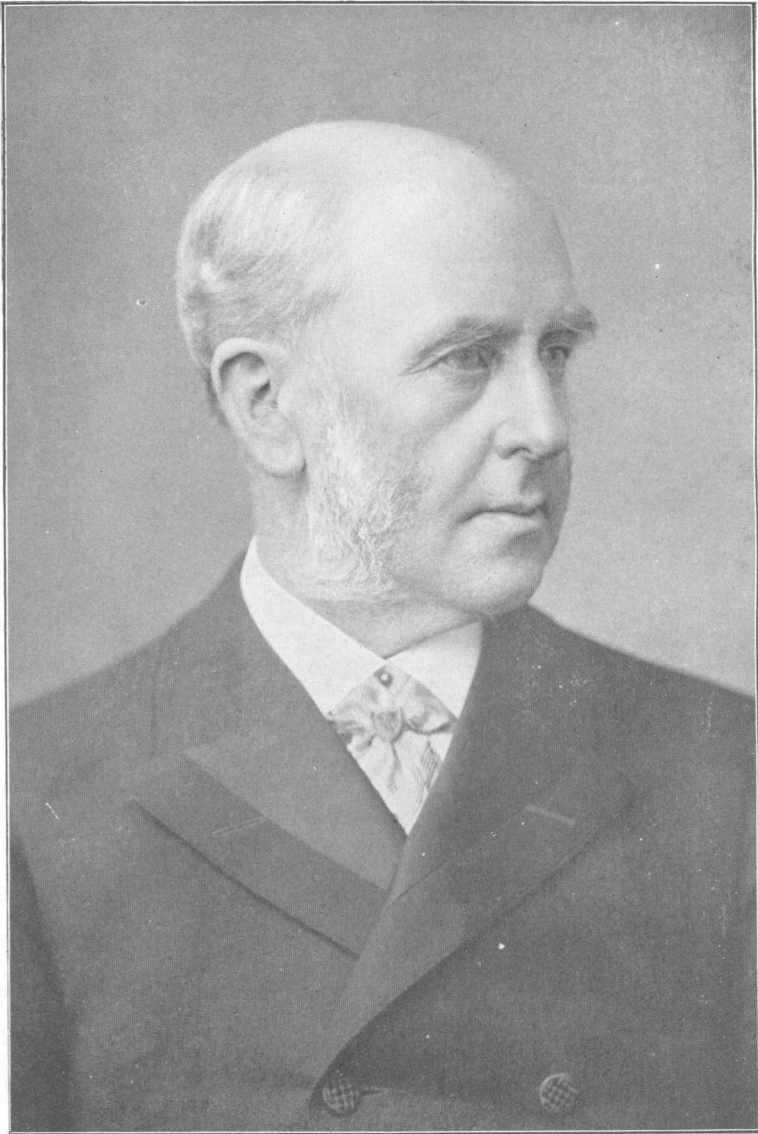
p. 215, last line of right column of No. 3: *0* should be *6* (inches).

p. 308, line 15 from foot: *two last* should be *last two*. You can have but one last.—W. W.

[Mr. Buckman will feel obliged if the readers of the GEOLOGICAL MAGAZINE will kindly substitute the following corrected Memorandum for that in the September Number, p. 432.—EDIT. GEOL. MAG.]

PROCEEDINGS DORSET FIELD CLUB: DATE OF VOLUME IV.—This volume was issued without any date on the title-page; and the question has often arisen as to the correct date. Papers which it contains are dated [1883] in the Royal Society's Catalogue. However, the evidence for the date is to be found in vol. V, p. xv. An obituary notice of the Rev. H. H. Wood says: "He dies just as the 4th volume of the Proceedings . . . is issued to the members." He died (p. xiv) on November 3rd, 1882, so that the end of October or beginning of November, 1882, is the date of the volume in question.

S. S. B.



*Yours truly
Arch. Geikie*