
INDEX TO ADVERTISERS

Bruker Nano GmbH	A6
Diatome	Cover 3
EDAX	A3
Electron Microscopy Sciences, EMS	Cover 2
Hitachi	Cover 4
Physik Instrumente	A9
Tescan	A5
ZEISS	A10



Life Sciences

Books and Journals from
Cambridge University Press

Cambridge is one of the leading publishers in ecology and conservation biology and publishes high quality texts and research across the breadth of the life sciences, focusing particularly on animal behaviour, biological anthropology, evolutionary biology, computational and systems biology, as well as statistics and professional development titles for biologists.

We also have an extensive portfolio of established journals in agriculture, ecology and conservation, and animal science.

For further details visit:

[cambridge.org/core-life-sciences](https://www.cambridge.org/core-life-sciences)

Cambridge
Core



CAMBRIDGE
UNIVERSITY PRESS



Cambridge Core

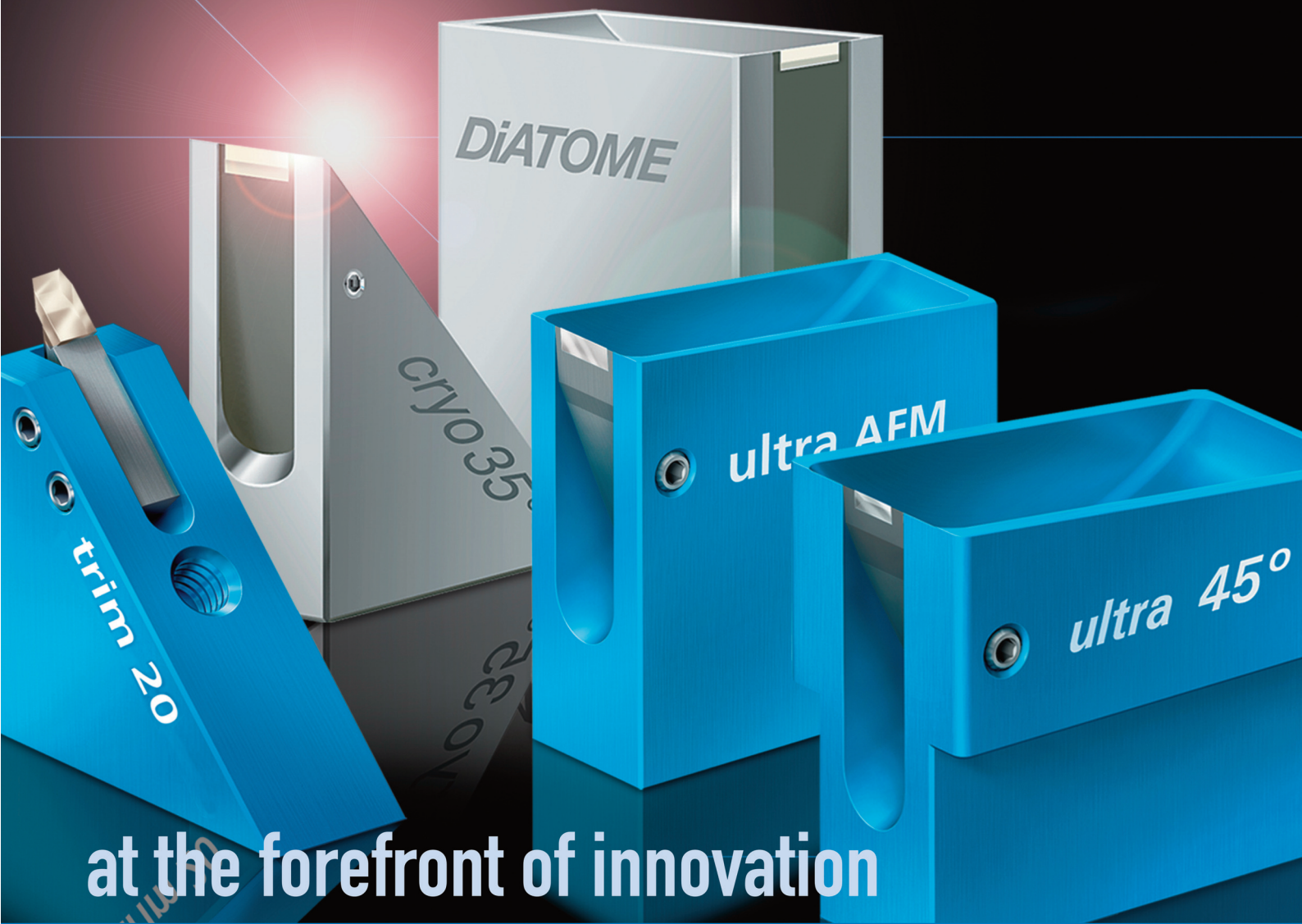
The new home of
academic content
cambridge.org/core

Cambridge Core

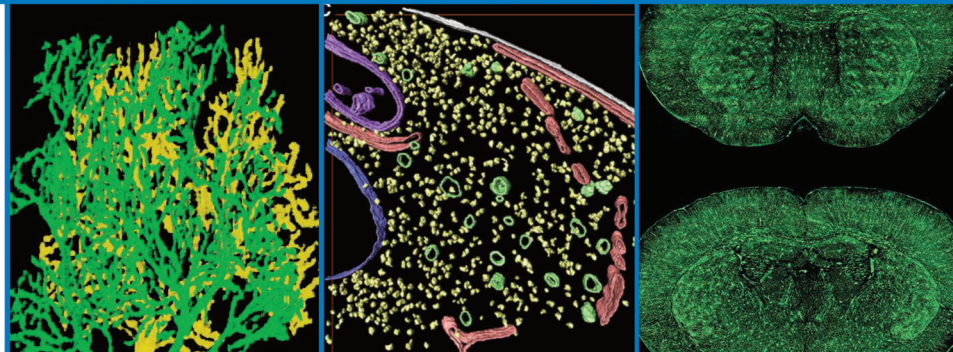


DiATOME *Diamond Knives*

Visit us at Booth 938



at the forefront of innovation



NEW! Ultra ATS The Ultra ATS Diamond knife is perfect for placing sections on Si wafers to view under the SEM. The knife comes in 3.0mm size with 35° angle.

***ultra 45° • cryo • histo • ultra 35°
histo jumbo • STATIC LINE II • cryo immuno
ultra sonic • ultra AFM & cryo AFM
trimtool 20, 45, and 90***

www.emsdiasum.com

DiATOME U.S.

P.O. Box 550 • 1560 Industry Rd. • Hatfield, PA 19440
Tel: (215) 412-8390 • Fax: (215) 412-8450
email: info@emsdiasum.com or stacie@ems-secure.com

Size without Compromise

The All-New SU3900 VP-SEM with an Extra-Large Chamber

Hitachi's new SU3900 Variable-Pressure SEM features an extra-large chamber to accommodate a multitude of analytical applications: EDS, EBSD, micro XRF, in situ, heating, cooling, tensile testing, and more. Equipped with 20 ports and a robust stage, the SU3900 can handle it all! Whether your sample is large, small, heavy, magnetic, or non-conductive, the SU3900 is the instrument for your lab.

Extra-Large Chamber & Heavy-Sample Stage

Superior X/Y range of motion for up to 5 kg sample weight

Ultra-Wide NaviCam FOV

Covering full observation sample area (200 mm Φ)

Intelligent Filament Technology

Auto optimization for improved filament performance and lifetime

Fully Integrated High-Quality EDS Capability

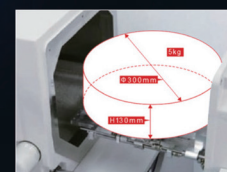
Seamless SEM and EDS operation from a single GUI



For more information:
microscopy@hitachi-hita.com



Sample: Pure Titanium
Accelerating Voltage: 5 kV
Magnification: 800x



Extra-large chamber for
max. 300 mm ϕ , 130 mm
tall, and 5 kg sample

Innovation ♦ Synergy ♦ Solutions



Science for a better tomorrow

Hitachi High Technologies America, Inc.

www.hitachi-hightech.com/us Tel. 800-253-3053 E-mail: microscopy@hitachi-hita.com