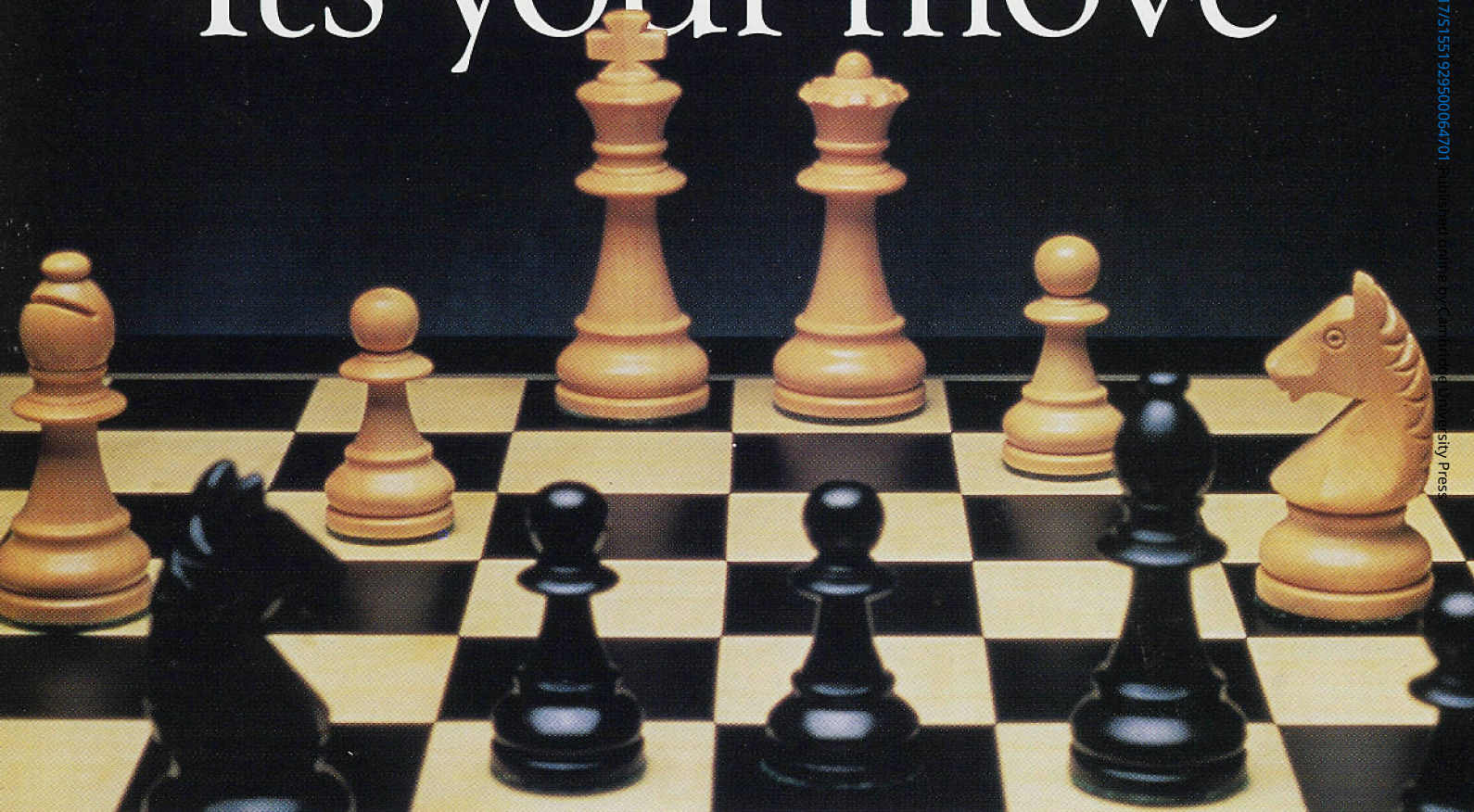


It's your move



ThermoMicroscopes offers more choices for nanoscale visualization than anyone. That means you choose the best scanning probe microscope for your application. Consider...

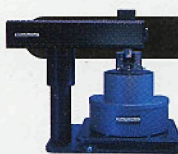
Explorer

The most versatile SPM ever built. Scans samples of any size. Dedicated system solutions for polymer and life sciences.



CP Research

The research SPM instrument of choice. Offers the most integrated scanning modes available in a single instrument.



AutoProbe M5

An analytical instrument designed for industrial applications. Advanced SPM technology at an affordable price.



Aurora NSOM

Designed and built by the world's leading manufacturer of NSOM systems. Features patented tuning-fork technology.



TM THERMOMICROSCOPES
Park Scientific Instruments TOPOMETRIX

1171 Borregas Avenue, Sunnyvale, CA 94089
Telephone 408.747.1600 Fax 408.747.1601
info@thermomicromicro.com

And those are just our opening moves. We've got more. Lots more. So consider your choices carefully. Then make your move to www.thermomicromicro.com.

THE DIFFERENCE YOU CAN MEASURE

You Can Afford This!

PC SEM

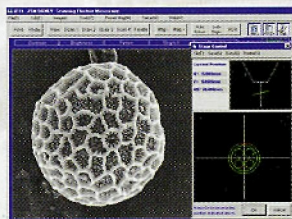
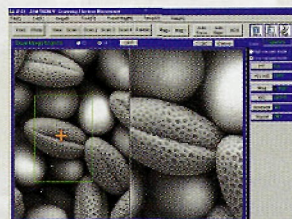
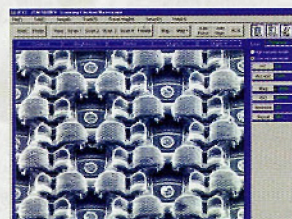


That's right, you can get the quality of a JEOL SEM now for under **\$80,000!**

If leasing this means around **\$1,500 per month.**

JSM-5600 & JSM-5600LV

Multi-Purpose and Low Vacuum Scanning Electron Microscope



All screens are clear and simple allowing easy system management and image optimization.

- ▶ **Based on a Simple PC Interface.**
- ▶ **Intuitive Operation with a Mouse Alone.**
- ▶ **No Nonsense Transition Between Conventional and Low Vacuum Modes.**
- ▶ **Built-in DTP System Allows Quick and Easy Report Generation and Printing.**
- ▶ **A Special High Sensitivity Detector Allows High Image Quality In All Modes.**

The new JSM-5600 and JSM-5600LV Scanning Electron Microscope was designed from the ground up as a PC SEM. This means that it can be controlled completely and efficiently from only the keyboard

and mouse. Keeping in mind the wide variety of preferences for controlling various aspects of an SEM we have also included an optional knobset for multitasking and fine control. You choose.

If you are currently in the market for a high end conventional or low vacuum SEM and need to combine state-of-the-art electronics with the versatility of computer control, we would like to invite you to come to our Applications Facility so that we can prove to you that it really is "As Easy As It Looks".

JEOL USA, Inc., 11 Dearborn Road, Peabody, MA 01960
Tel: 978/535-5900 • Fax: 978/536-2205
Email: eod@jeol.com • WEB: <http://www.jeol.com>

