

Practical Aspects of Electrochemical Corrosion Measurements During *In Situ* Analytical Transmission Electron Microscopy (TEM) of Austenitic Stainless Steel in Aqueous Media

Sibylle Schilling,¹ Arne Janssen,¹ Nestor J. Zaluzec,^{1,2,*} and M. Grace Burke¹

¹Materials Performance Centre, University of Manchester, Manchester, M13 9PL, UK

²Photon Sciences Division, Argonne National Laboratory, Argonne, IL 60439, USA

Abstract: The capability to perform liquid *in situ* transmission electron microscopy (TEM) experiments provides an unprecedented opportunity to examine the real-time processes of physical and chemical/electrochemical reactions during the interaction between metal surfaces and liquid environments. This work describes the requisite steps to make the technique fully analytical, from sample preparation, through modifications of the electrodes, characterization of electrolytes, and finally to electrochemical corrosion experiments comparing *in situ* TEM to conventional bulk cell and microcell configurations.

Key words: *in situ*, TEM/STEM, electrochemical cell, sample preparation, FIB

INTRODUCTION

Conventional “bulk” metallic materials still dominate industrial applications, and common methods to study localized corrosion involve experiments with measurement areas in the cm² to mm² range. However, in order to completely understand the mechanisms of corrosion and interactions between specific microstructural features in or at the metal surface and the local environment, it is necessary to study the corrosion processes at high spatial resolution. At the same time, it is important not to dismiss the effects of bulk material entities such as grain boundaries, inclusions, fine-scale precipitates and/or defects. Several studies have been conducted to assess the electrochemical behavior of small regions (μm² or nm²) in bulk samples. For example, Lohrengel (2004), Böhni et al. (2000), and Martin et al. (2008) all investigated materials via micro- or nanocapillary cells with an exposed area of several μm² or nm². This facilitated the study of localized corrosion, e.g. of single grains in welds, or single micron-sized particles in metal. Vogel & Schultze (1999) combined a microcell and optical/laser microscope to investigate local reactions on the micrometer scale. A considerable disadvantage in those studies was that these measurements could not directly record the response or reaction on the surface as a function of time, such as the time-resolved response of a pit initiation or dissolved inclusion, because the detailed examination of the exposed areas were always performed after the electrochemical measurements.

There is now, increasingly, a desire to perform *in situ* studies on materials in order to understand the near real-time behavior of the surface interaction in a range of

environments. *In situ* analytical transmission electron microscopy (TEM) in liquids has become an increasingly important and a dynamic research area as it allows the experimentalist observe many of the phenomena of interest in real time (de Jonge and Ross, 2017). This re-emergence has become possible due to the advent of a new range of specialized, microfabricated *in situ* specimen TEM holders which include: liquid, electrochemical, heating, gaseous and tomographic analysis (Li et al., 2013; DENS, 2016; Hummingbird Scientific, 2016; Protochips, 2016). In addition, the recent ability not only to simply image, but also to conduct hyperspectral elemental imaging in liquids or gases is particularly important when studying the localized interaction of the environment with specific microstructural features in metals and their alloys (Schilling et al., 2015; Prestatetal, 2015).

In Situ Aqueous Studies: Background

To understand the electrochemical reaction of a metal from both a thermodynamic and kinetic perspective, it is essential to perform detailed examination of the interaction between a reaction surface and its surrounding liquid media. At the same time, it is also crucial to understand the investigation/characterization technique employed, as well as any associated factors which can affect the system during *in situ* studies. Specifically, the chemical and physical reactions, e.g. surface condition, specimen area, temperature, flow rate, and pH during any *in situ* experiments, together with any detrimental electron beam-induced effects, which may be realized in the aerated aqueous media. To explain this comprehensively is beyond the scope of this work; however, to understand the systematic protocols we have established for *in situ* electrochemical experiments, we will briefly review a compendium of factors which should be understood and

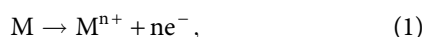
Received January 1, 2017; accepted June 11, 2017

*Corresponding author. zaluzec@microscopy.com

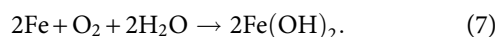
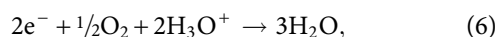
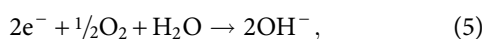
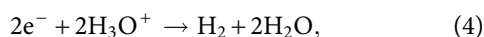
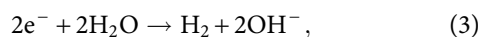
controlled to the greatest extent possible in order to achieve reproducible electrochemical studies of corrosion in this new operating mode during *in situ* TEM.

***In Situ* Aqueous Studies: Corrosion Basics**

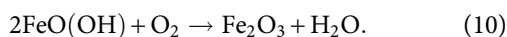
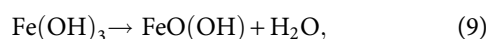
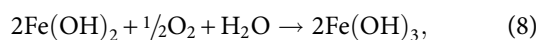
Aqueous corrosion is an electrochemical process whereby electrons produced via anodic oxidation of a metal are consumed by an oxidant in the environment, such as dissolved oxygen, protons or H₂O. During dissolution/corrosion, metal atoms leave the bulk material as ions. This process is an anodic oxidation reaction. The general case of a metal M undergoing oxidation is given by equation (1) and a specific example of iron illustrated by equation (2).



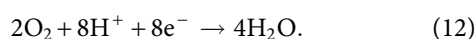
The parallel cathodic reaction, in which electrons are released during a metal oxidation event and are then consumed, is known as a reduction reaction and occurs at the surface of the cathode. Reduction processes can occur in many media and involve numerous species and these processes in aqueous solutions are illustrated by equations (3–6). In neutral aerated solutions, the reduction of dissolved oxygen [equation (5)] is the main cathodic process, whereas in acidic solutions proton reduction predominates [equation (4)]. The corrosion of iron in neutral H₂O containing oxygen can be described by a combination of equation (2) and equation (5) which can be combined and yield equation (7).



The products produced during the dissolution of metals are also many and complex. For example, in the case of Fe, further oxidation of iron (II) species to form a variety of secondary corrosion products, such as iron (III) oxide, iron (III) hydroxides or iron (III)-oxide-hydroxide may occur. These reactions are described by reactions (8) through (10):



The presence of other phases in Fe alloys, such non-metallic MnS inclusions, will also react in oxygenated H₂O as per reactions (11) through (12) (Wranglen, 1974):



The reaction of MnS inclusions in H₂O will be addressed in Validation Experiments and Application to Austenitic Stainless Steel Sections, later in this paper.

To maintain electro-neutrality, anodic dissolution must be balanced by the reduction process and the current produced via both oxidation and reduction reactions must be equal. Corrosion is only thermodynamically feasible when the change in free energy $\Delta G < 0$, i.e. when the thermodynamic reversible potential of the cathodic process is greater than that of the anodic process.

By its nature, corrosion is an interfacial reaction of metal surfaces and liquid electrolyte and this region has been generally modeled as having three interaction layers. The first layer is electrolyte in contact with the metal surface and is termed the inner Helmholtz plane where the charged metal surface adsorbs dipole H₂O molecules due to chemical interaction and behaves differently than the bulk electrolyte. The second layer is composed of ions attracted to the surface charge via the Coulomb force, electrically screening the first layer, and is called the outer Helmholtz plane. This second layer is loosely associated with the covered metal surface. These inner and outer Helmholtz layers are also called the “electrical double layer” and behave like a plain charged capacitor, and the potentials developed there in are used in part to characterize the electrochemical processes. Finally, a third or diffusion layer is made of free ions that move in the remaining electrolyte under the influence of electric attraction and thermal motion rather than being firmly anchored. This model describes the reaction of the metal surface in H₂O and, importantly, the electrical potential here can be influenced by numerous factors especially the presence of any excess electrons which might accelerate the interfacial reaction (Wendler-Kalsch & Gräfen, 1998; Perez, 2004; Bagotsky, 2006; Hamann & Vielstich, 1997). Measuring these potentials and their changes is important in establishing reproducible and interpretable measurements and is key to electrochemical studies.

During all EM-based *in situ* studies, there is nearly always uncertainty as to the process that drives the reaction at the electrolyte/specimen interface. For *in situ* electrochemical measurements a potentiostat is used to supply and measure the potential difference of the reaction on metal/environment. Under potentiostatic control, it is also possible to measure the resulting electrochemical current generated in the system. Importantly, during a TEM experiment, the incident electron beam will also introduce current at this local interface and, in addition, may also create damage to the specimen and the media. Egerton has reviewed the different factors of the elastic and inelastic scattering effects of the electron beam in a dry system; these include electrostatic charging, radiolysis, atomic displacement, sputtering, specimen heating, structural damage, mass loss, hydrocarbon contamination, and energy threshold effects (Egerton et al., 2004; Egerton, 2014). Recent studies have also identified alternative factors that may also affect the liquid during *in situ* aqueous experiments; these studies have primarily concentrated on the electron beam/liquid interaction such as

the reported generation of H₂ bubbles (Grogan et al., 2013). In other studies investigators were primarily concerned with nanoparticles, nanowires, or sputtered thin films located between two SiN_x windows, resulting in the creation of partially or fully filled chamber of aqueous solution, all of which differ from the specimens used in this work (de Jonge et al., 2010; Woehl et al., 2012, 2013; Chee et al., 2015; Schilling et al., 2015). In these cases, the volume ratio of nanoparticles and electrolyte is small compared with a conventional bulk electrochemical experimental cell, which is comprised of a larger metal specimen and surrounding electrolyte. Thus, comparison of *in situ* studies with the *ex situ* studies of the corrosion of metal surfaces are fraught with scaling issues. In addition, for the specific case of aqueous corrosion studies, the electron beam that is used as the imaging probe has two principle detrimental effects: first, it may charge the sample through direct electron transfer, which could lead to a change in the temperature of the solution and/or sample (Cazaux, 1995; Zheng et al., 2009); second, the beam may stimulate radiolysis in the electrolyte subtly changing its chemistry. These can change the pH and, together with temperature, can accelerate the electrochemical reaction at the Helmholtz double layer in the system (Schneider et al., 2014).

***In Situ* Aqueous Studies: Previous Work**

Given the importance of electron beam-induced phenomena, we first turn to that area which has had a long history of investigation. Radiolysis of H₂O has been extensively studied, e.g., both Garrett and Pimblott have analysed the hydrolysis of H₂O by electrons introduced from various sources (Pimblott & LaVerne, 1992, 1998; Garrett et al., 2005). These authors studied low- and high-energy electrons demonstrating electron-driven reactions and the resulting decomposition of H₂O. Garrett showed that more than one water molecule is ionized by electrons having energies between 30 and 100 eV, so high concentrations of ionized species can be formed in local areas. Pimblott discussed four reactive species that are produced during radiolysis of H₂O including hydrated electrons, hydrated protons, hydrogen atoms and hydroxyl radicals. Pimblott suggested that under irradiation with high-energy (>100 keV) electrons, H₃O⁺ and H₂O₂ will form in aerated H₂O. That work also used a Monte Carlo track-structure simulation to model the quantity, composition and spatially inhomogeneous distribution of diffusing and reacting particles. There it was shown that, by decreasing electron energy from 100 to 1 keV, there is an increase in rate and amount of reaction leading to increased production of H₂ and H₂O₂. However, with energies greater than 100 keV, a decrease in reaction rate is expected, along with a decrease in production of free radicals due to the change in interaction cross-sections for these processes by these high-energy electrons.

In contrast, Schneider et al. (2014) described an irradiation simulation model of various solutions (aerated and deaerated H₂O) with high- and low-electron dose rates.

They reported that bubbles were not generated from aerated distilled H₂O at lower dose rate (1.4×10^9 Gy/s) over a 50-min period, when exposed to an 30 kV electron beam, but formed quickly in a 300 kV instrument. Evidence was presented that high-electron dose rates in an aerated solution, which is predominantly used in liquid *in situ* experiments, can change the steady-state concentration of the radiolysis products and were dependant on the initial pH of the solution. It was further speculated that oxygen molecules in solution reduce the hydrated electron (eH) concentration at low-dose rates.

In a related study of nanoparticles in aqueous solution, Grogan et al. (2013) examined gold nanorods having a trace amount of the surfactant cetrimonium bromide in an *in situ* TEM experiment using an accelerating voltage of 300 kV, a beam current of 1–10 nA and a beam radius of $\sim 2 \mu\text{m}$. They observed the formation of nano-bubbles with radii between 20 and 200 nm after ~ 13 s. The authors assumed that H₂O vapor did not form; rather, they stated that the H₂O molecules disassociated into their constituent elements by breaking of the atomic bonds. They assumed that the nano-bubbles contained O₂ and H₂. The proportion of these bubbles did not exceed the saturation point required to form large bubbles, implying a reversible reaction being present to prevent the build-up of gases in the solution.

The first reported experiments using an *in situ* electrochemical cell were the investigations of battery materials using cyclic voltammetry, performed by both Holtz and Zheng (Holtz et al., 2014, 2015; Zeng et al., 2014). Chee et al. (2015) deposited a thin Al layer with Au on an electrochemical SiN_x window, to measure the galvanic corrosion in a 0.01 mol NaCl electrolyte. Their study demonstrated that it was possible to measure the electrochemical behavior of the interface between sputtered Al and the electrolyte for pit initiation and galvanic corrosion. They also concluded that radiolysis of the electrolyte influenced their electrochemical measurement.

EXPERIMENTAL PROTOCOLS AND VALIDATION

Whereas the preceding studies have been illuminating, the ability to explore localized reactions in electron-transparent steel samples or other alloys under *potentiostatic control* as well as the ability to study *potentiostatic polarization* behavior *in situ*, has not been conducted. The reasons are multifaceted, and the remainder of this work describes the details and requisite modifications of an electrochemical *in situ* cell, and the specimen geometry to facilitate *controlled* conditions. The results also describe an investigation of a conventional austenitic stainless steel–liquid system under the influence of the electron beam in an analytical transmission electron microscope. Three main aspects are discussed next:

1. the electrode design and behavior in different electrolytes under the incident electron beam;
2. the experimental procedure for sample preparation and optimization;

- the experimental results of an *in situ* electrochemical measurement and its comparison to conventional bulk and microcell data.

Conventional Experimental Equipment

The *in situ* TEM experiments outlined herein were performed using an FEI Tecnai (FEI Company, Hillsboro, OR, USA) G2 T20 analytical electron microscope operated at 200 kV with a LaB₆ cathode and equipped with an Oxford Instruments X-Max^N 80TLE Silicon Drift Detector and AZTEC software system (Oxford Instruments plc, Abingdon, UK) for spectrum imaging and analysis. X-ray energy dispersive spectroscopy (XEDS) hyperspectral imaging data were acquired at Process Time 5, with a dwell time of 0.1 s/pixel, and background subtracted using Oxford Instruments software. The FEI Tecnai TEM also provides a measure of the electron dose rate on the manufacturer-calibrated screen sensor.

The *in situ* liquid cell holder used in this work was a Poseidon P510 electrochemical cell (Protochips Inc., Morrisville, NC, USA). Distilled H₂O and 0.001 M H₂SO₄ solution (pH = 3) were used as electrolytes. This holder employs a liquid environmental cell (eCell) formed by a pair of environmental chips (E-chips) having electron-transparent amorphous SiN_x membrane windows supported along their border by a thicker Silicon frame. These “E-chips,” are carefully sealed along their periphery to contain the desired environmental media within a small volume, which then becomes safely isolated from the vacuum of the conventional electron optical column; a precisely engineered gap is established between the windows by spacers into which the specimen of interest is immersed. In this work, 5 μm (20 nL) and 500 nm (2 nL) gaps were used. The observable volume defined by the SiN_x (silicon nitride) windows was ~150 × 50 × 5 μm during electrochemical cell studies. Before use, all E-chips were cleaned for 2 min in acetone (C₃H₆O), isopropyl alcohol (C₃H₇OH), H₂O₂ and finally rinsed in distilled H₂O. In addition, a Hitachi ZONE-SEM (Hitachi High Technologies America, Schaumburg, IL, USA) with UV irradiation was used to reactivate the E-chip surface to improve hydrophilic properties of the E-chips.

Electrochemical Configuration of Electrodes for Open Circuit Potential Measurements

The electrochemical chips used in this work are modifications to Poseidon liquid cell chips (Protochips Inc.; Schilling, 2016) and are refashioned from simple liquid cell SiN_x cells by the addition of reference (RE), counter (CE), and working (WE) electrodes (Figs. 1, 2) having appropriate connections to a Gamry 600 series potentiostat (Gamry Instruments, Warminster, PA, USA) for current/voltage measurements. Two general configurations of electrochemical chips were available from the manufacturer: Type I in which all three electrodes, RE, CE, and WE, are made of platinum (Pt) and parallel to each other and extend over the SiN_x window (Fig. 1a); and Type II in which the WE is made of glassy carbon (GC) and the RE and CE are made of Pt, with the RE and CE surrounding the WE/SiN_x window (see Fig. 1b). Only the portions of the WE electrodes between 40 and 200 μm of the window are exposed to the environment; an SU8 photo-resist film covers most of the electrodes on the chip to isolate them from the environment.

Although the manufacturer’s standard electrochemical chip designs (Types I & II) are reasonably suited for studies of battery materials and nanoparticles, these configurations are not amenable to quantitative electrochemical studies of conventional alloy samples (i.e., our hybrid TEM specimens). Therefore, several design modifications were implemented to the electrochemical E-chips. These modifications included:

- change to the geometry of electrodes;
- change of the size of the WE;
- elimination of the GC electrode;
- modification of the WE location; and
- 90° rotation of the SiN_x window.

All of these modifications were undertaken so as to optimize the attachment of a hybrid specimen to the WE without breaking SiN_x window, to maximize the working area, and finally to facilitate *in situ* X-ray spectrometry.

The configuration of the RE and CE on the third variation (Type III) of electrochemical chip is shown in Figure 2a. In this configuration both the RE and CE electrodes now

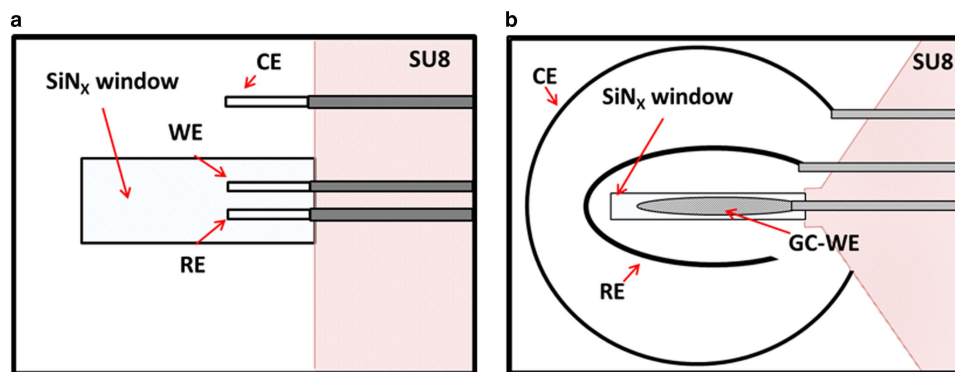


Figure 1. Schematic illustration of the two original Protochips electrochemical-chip electrode configurations: (a) Type I—linear configuration (b) Type II—glassy carbon (GC) electrode. CE, counter electrode; RE, reference electrode; WE, working electrode.

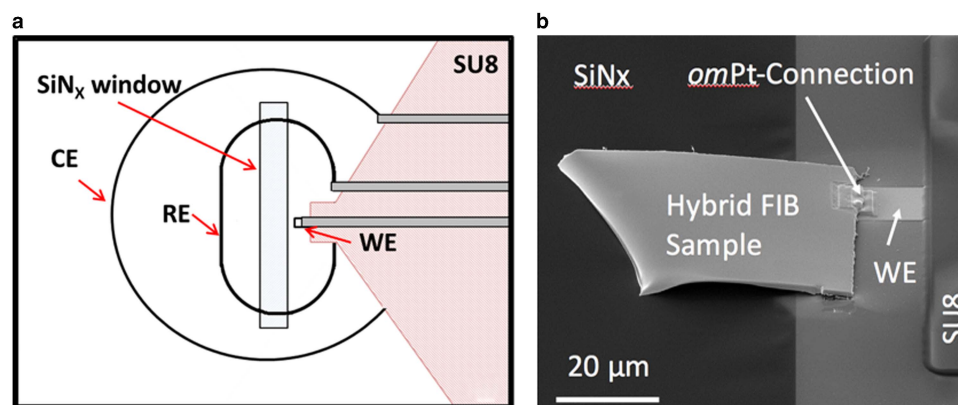


Figure 2. **a:** Schematic illustration of Type III—electrochemical chip and electrodes. The working electrode (WE) is $\sim 10\ \mu\text{m}$ outside of the SiN_x window whereas the reference (RE), counter (CE) electrodes circumscribe the SiN_x window. **b:** Hybrid-prepared specimen connected to the Type 3 WE by an organometallic *omPt* deposition, with the thin focused ion beam (FIB)-extracted foil extending over the electron transparent 50-nm thick SiN_x window (RE and CE not visible in this image). All electrodes are Pt.

circumnavigate the WE in the shape of extended ovals, allowing the experiment to achieve near-uniform current lines. An additional modification of the WE is that its position is now located outside of the 50 nm thick SiN_x window area. This readily facilitates the use of a Ga focused ion beam (FIB) and organometallic Pt deposition to both secure and electrically attach the hybrid corrosion-test specimens to the electrode by displacing this attachment point from direct contact with the SiN_x window to the more robust Si chip. This change was implemented to avoid damage to the SiN_x window. In addition, the glassy carbon WE has been replaced by a Pt WE. This was done due to the fact that the glassy carbon introduces an additional material with a different potential complicating both measurement and data interpretation. Furthermore, the glassy carbon also promotes galvanic and crevice corrosion of the hybrid specimen. Finally, in order to use the optimized XEDS acquisition efficiency of the modified beryllium butterfly lid (Zaluzec et al., 2014), the window of the E-chips was rotated by 90° to minimize the shadowing effects.

Open Circuit Potential Measurements

During the electrochemical studies, *in situ* measurements of the open circuit potential (OCP) and potentiodynamic polarization behavior are used to monitor critical corrosion variables. The OCP, also known as the free corrosion potential, is the potential difference measured between the WE and RE. The OCP is a function of many system variables; these include material (and prior thermomechanical processing that can affect material microstructure), solution composition, temperature, and solution flow (Hamann &

Vielstich, 1997). For this work, *in situ* potentiodynamic polarization curves were measured using the following conditions: a 2 min cathodic cleaning at $-500\ \text{mV}$, a 10 min delay at the OCP, after which a potentiodynamic polarization scan from -400 to $400\ \text{mV}_{\text{RE}}$ was conducted. The potential scan rate was $1\ \text{mV/s}$. All the measurements were carried out using a Gamry 600 series potentiostat and analysed using the Gamry software.

Specimen Preparation

Preparation of TEM specimens for electrochemical studies of metals is difficult because of the need to control both the geometry and connectivity via previously described electrode configurations. This is due, in part, to traditional methodology of preparing TEM specimens which begins with a bulk (nonelectron transparent) sample and ends with thin (electron transparent) areas whose periphery is surrounded by a bulk rim (Kestel, 1986). To facilitate this study, a hybrid preparation protocol was developed, which employs a combination of both electrochemical polishing and FIB extraction, the details of this hybrid technique are described elsewhere (Zhong et al., 2016). The base material for this work was cold-rolled Type 304 stainless steel (SS) (Table 1), which was mechanically thinned to $\sim 100\ \mu\text{m}$ in thickness before punching out 3 mm diameter discs. The disc specimens were then electropolished in 20% HClO_4 –80% CH_3OH at -33°C and 20 V, as is typical for conventional plan-view TEM studies. From the plan-view specimens, site-specific extraction of an electron-transparent thin area was accomplished using an FEI Quanta 3D Dual Beam FIB (FEI Company) (Zhong et al., 2016). Hybrid specimens were then

Table 1. Chemical Composition (wt%) of Type 304 SS.

Material	C	Si	Mn	P	S	Cr	Mo	Ni	Al	Ti	N	Fe
304 SS	0.045	0.48	1.56	0.027	0.008	18.50	0.02	9.91	0.034	<0.01	0.04	69.37

transferred to the appropriate E-chip and affixed to the peripheral silicon surrounding the SiN_x window using organometallic Pt deposition. Figure 2b is a secondary electron (SE) micrograph showing an example configuration and the position of a hybrid specimen over the SiN_x window, with the electrical connection on a Type III electrochemical E-chip.

VALIDATION EXPERIMENTS

In Situ Electrode Validation

To validate electrochemical measurements for this work, the stability of the RE and the suitability of electrode configuration were extensively assessed so that this technique could also be used for “bulk” (conventional) alloys. This included experiments using both distilled H_2O and dilute H_2SO_4 (Schilling, 2016). The prerequisite for a RE is its stability in the electrolyte. Common RE such as Hg_2Cl_2 (saturated calomel) or Ag/AgCl electrodes have a stable potential over time (Inzelt et al., 2013). However, it is also possible to use a pure metal (i.e., the existing Pt electrode) as a “pseudo-electrode” reference, as has been shown by both Ives & Janz (1961) and Kasem (2008). Figure 3 shows the *ex situ* OCP over a 1-h period to assess the stability of the linear Pt (Type I) and glassy carbon (Type II) REs in H_2O and 0.001 M H_2SO_4 electrolytes. Once equilibrium was established, all measurements showed a nearly constant OCP as a function of time and the calculated potential (red curve), 0.144 V, is in close agreement with the linear Pt electrode configuration cell (black curve), 0.163 V, after 1 h. Thus, despite the low electrical conductivity of distilled H_2O ($6\ \mu\text{S}/\text{cm}$), free corrosion potential measurements are obtainable using Pt electrodes. The glassy carbon WE (Type II) although stable, is not suitable for these electrochemical studies for other reasons. First, electrode size is very large, thereby obscuring a large proportion of the SiN_x window. Second, the use of Pt deposition in the FIB production of

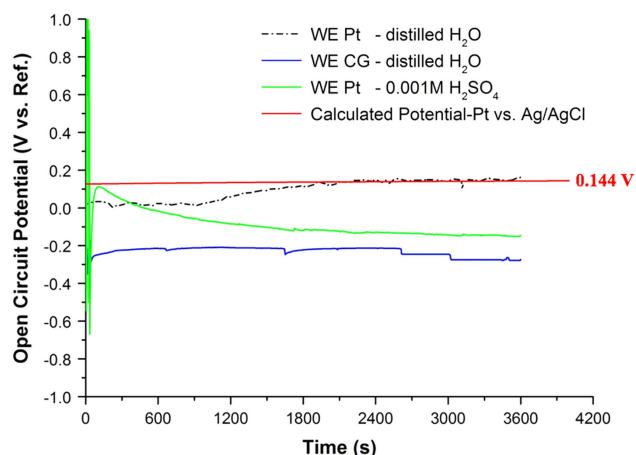


Figure 3. *Ex situ* open circuit potential measurement for different electrolytes and environmental chips (E-chip) electrodes. WE, working electrode. CG, glassy carbon.

the hybrid specimens causes galvanic corrosion at the connection points (steel/glassy carbon/Pt). Finally, the incident electron beam should not illuminate both electrodes at the same time, as this can cause an electrical short circuit in the electrochemical E-chip system, a problem with the glassy carbon configuration because of the limited space.

In Situ Open Circuit Potential Measurements in H_2O

Having carefully assessed the electrode configuration and stability, we next turned to an assessment of the presence of the incident electron beam during OCP measurements, all of which were obtained using Pt electrodes (WE, RE, and CE). Figure 4 plots the variation in the OCP in aerated distilled H_2O using a $5\ \mu\text{m}$ E-chip gap with the electron beam ON and OFF as well as under conditions of both static and flowing electrolyte. The results show a potential difference change between beam ON/OFF of about 500 mV in static (zero flow) mode (black curve) and 350 mV for $5\ \mu\text{L}/\text{min}$ flow (red curve). The temporal response in both curves indicates a charging and discharging of the 304 SS specimen resulting from the incident electron beam: an increase when the beam is on, and decaying back to the non-beam OCP levels when the beam is “blanked.” Similar behavior of the potential curves was observed for a 500 nm gap cell configuration.

The explanation for this electrochemical response is simply that this system configuration behaves like a plate capacitor. Between two parallel plates is an electrically conductive electrolyte that enables the exchange of charges: anions migrate to the cathode, and the cations to the anode. In this case, the electrolyte resistance is large due to the marginal conductivity ($6\ \mu\text{S}/\text{cm}$) of distilled H_2O . If an

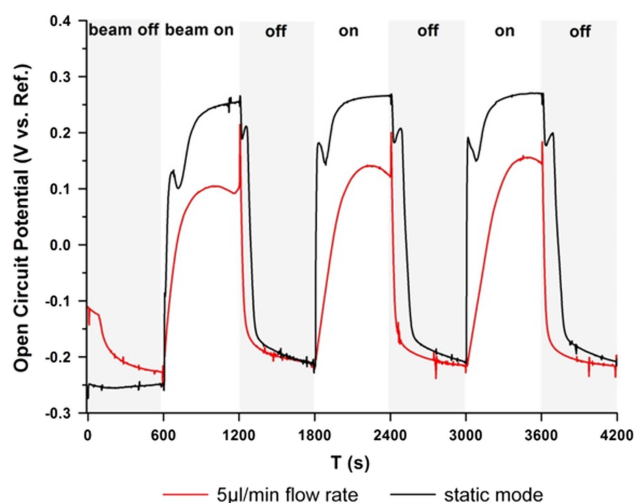


Figure 4. *In situ* open circuit potential measurement in distilled H_2O with $5\ \mu\text{m}$ gap between environmental chips (E-chips) for the static (black curve) and $5\ \mu\text{L}/\text{min}$ flow mode (red curve). Note the large effect of the incident electron beam on the open circuit potential. The electron dose rate was $4.46\ \text{A}/\text{m}^2$ without a specimen and $1.28\ \text{A}/\text{m}^2$ with the specimen in the field-of-view; thus, the specimen/cell absorbs about $3\ \text{A}/\text{m}^2$ (see text for details). The reference, working, and counter electrodes are Pt.

electric field is now supplied to the system, the metal atoms become polarized, and the metal surface and the electrolyte behaves as a dielectric. The supplied energy will be stored in the electric field between the Helmholtz planes and a charge builds up (Hamann & Vielstich, 1997). When the applied electrical field is turned off, the additional energy is no longer supplied and the stored energy decays over time as the system “discharges.” The existing ions migrate slowly to the electrodes until the interaction between surface and electrolyte reaches equilibrium, when the planes are fully discharged. The electron dose rate was 4.46 A/m^2 as measured on the TEM screen sensor without a specimen and 1.28 A/m^2 with the specimen in the field-of-view. This indicates that the specimen/cell absorbs about 3 A/m^2 . The absorbed energy

may be converted into heat, which could also locally generate temperature increases in the system.

In Situ Open Circuit Potential Measurements in $0.001 \text{ M H}_2\text{SO}_4$

Figure 5 plots experiment OCP as a function of electron beam exposure on a Type 304 SS specimen in the $0.001 \text{ M H}_2\text{SO}_4$ (pH3) electrolyte and shows (after equilibrium is established) the absence of electron beam effects in the OCP values with the electron beam incident on the cell. This should be contrasted with similar experiments in distilled H_2O (Fig. 4). Here, the conductivity of low-concentrate acid is $147 \mu\text{S/cm}$ and the obtained potential curve is reasonably behaved over time, reaching about -500 mV for the $1 \mu\text{L/min}$ flow rate and -300 mV for the $5 \mu\text{L/min}$ flow rate. The more cathodic potential measured for the $1 \mu\text{L/min}$ flow rate can be understood in terms of an electron beam effect as the electrons generated by the incident beam will be absorbed by the ions in the H_2SO_4 electrolyte, which has a resistance that is much lower than that of H_2O . This result indicates that the electron beam effect is dependent on the conductivity of the electrolyte and specimen. Hence, for quantitative studies, it will be necessary to measure OCP in the absence of the incident beam, which clearly disturbs the electrochemical behavior irrespective of the test condition. Fortunately, equilibrium is reached relatively rapidly and can be accelerated by increasing liquid flow. However, the use of a higher flow rate, thereby refreshing the electrolyte through the cell, is not without consequence. In Figure 6, we show the effects of flow rate and E-chip gap thickness on image resolution, which degrades as either parameter is increased.

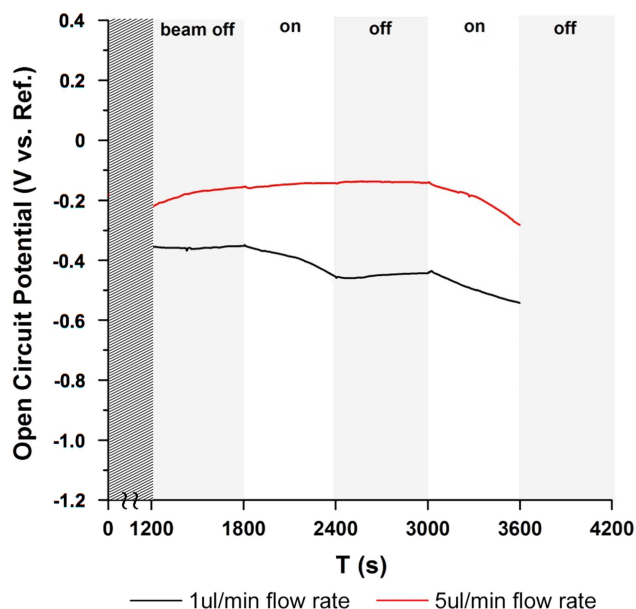


Figure 5. *In situ* open circuit potential measurement in $0.001 \text{ M H}_2\text{SO}_4$ using Pt reference electrode and counter electrode, with specimen attached to Pt working electrode. The black curve was generated with a flow rate of $1 \mu\text{L/min}$ and the red curve with a flow rate of $5 \mu\text{L/min}$. Notice that once equilibrium is established, the significantly reduced electron beam effects to open circuit potential measurements in mildly acidic conditions. Note: from 0 to 1200 s the system was allowed to equilibrate.

In Situ Potentiodynamic Polarization in $0.001 \text{ M H}_2\text{SO}_4$

In order to confirm the validity of the *in situ* electrochemical measurements on electron-transparent Type 304 austenitic SS specimens and their relevance to the bulk material, it is essential to correlate these data with those obtained from conventional electrochemical tests. To accomplish this, conventional (bulk) results have been compared with those

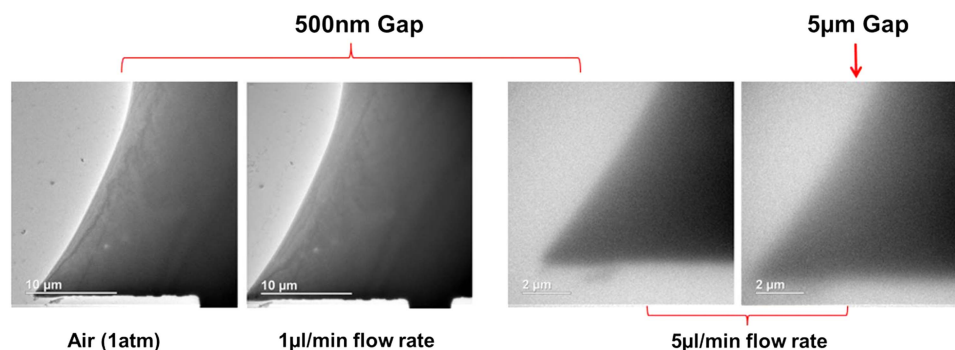


Figure 6. Bright field-transmission electron microscopy images showing the effect of flow rate on image quality. This specimen configuration (electrochemical environmental chips assembly) is shown in Figure 2.

obtained using a microcell (~300 micron diameter area) and the results from the electrochemical E-chip. These data span measurement areas of several cm^2 (conventional), mm^2 (microcell) and μm^2 (*in situ*).

The potentiodynamic polarization curves of the all three regimes for Type 304 SS in a low concentration H_2SO_4 (0.001 mol/L) are presented in Figure 7. All three curves show a similar trend with an OCP of approximately -100 mV (standard hydrogen electrode). Thus, to a good approximation, measurements of OCP are achievable, especially when the artifacts associated with the electron beam as previously discussed have been properly addressed. However, there is a noticeable difference in the variation in the current density in the comparison of the three polarization curves. Decreasing the measurement area decreases the measured current density and thus, one would expect that the current density for the *in situ* experiments, which have the smallest surface area, to be lower than both the bulk and microcell current density. Contrary to this logic, the values obtained exceed the *ex situ*

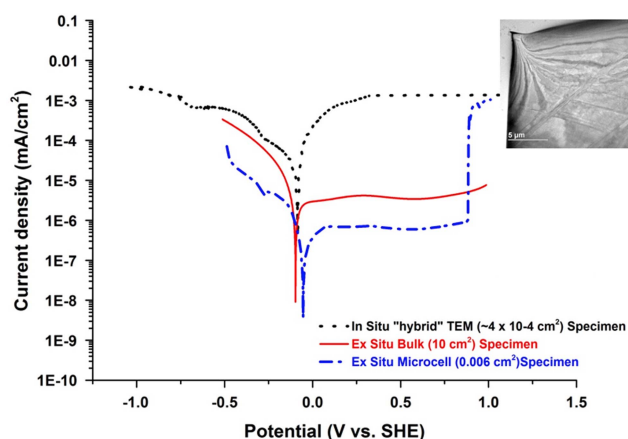


Figure 7. Potentiodynamic polarization curve of Type 304 SS in 0.001 M H_2SO_4 . The black curve was measured using the *in situ* electrochemical cell with a 500 nm gap, blue curve was measured using the microcell, and the red curve was measured using the conventional bulk sample technique. **a:** Bright field transmission electron microscopy image shows the area imaged during the *in situ* electrochemical test.

measurements in both cathodic and anodic regions; however, at the extremes the microcell and *in situ* TEM data begin to converge. In these measurements, the increased current density may be attributed to charge accumulation due to the presence of the incident electron beam, which in the mildly acidic electrolyte does not affect the OCP values (Fig. 7). Having confirmed the validity of OCP measurement with traditional bulk measurements, it is now possible to create and identify cathodic, neutral, and anodic conditions with an *in situ* cell and thus control the corrosion environment.

APPLICATION TO AUSTENITIC STAINLESS STEELS

As an exemplar of this validated experimental procedure, Figure 8, presents a series of hyperspectral images from a 0.03 wt% S Type 304 SS containing MnS inclusions prepared using all of the previously described protocols. The initial state of the region of interest is shown in the top row by bright field scanning transmission electron microscopy imaging as well as base-line Fe, Mn, and S elemental distributions. These initial state images were taken in the E-chip liquid holder, in 1 bar air (i.e., no liquid). Next, deionized H_2O was introduced to the E-chip cell, the OCP conditions allowed to stabilize and the region of interest was then exposed to flowing liquid at room temperature with the electron beam blanked. The lower row documents the dissolution of the MnS inclusion, which was detected after 24 h in H_2O .

MnS inclusions in low alloy steels and in austenitic stainless steels are associated with both localized corrosion/pitting, environmentally assisted cracking, and corrosion fatigue. Thus, this *in situ* result shows that even at room temperature, the inclusion dissolution process occurs.

The ability to microchemically assess and measure such ultrafine-scale localized reactions associated with the initial stages of dissolution/corrosion is important in developing an understanding of the precursor events for environmentally assisted degradation phenomena in engineering alloys, and, ultimately to aid in the development of predictive models for such materials degradation.

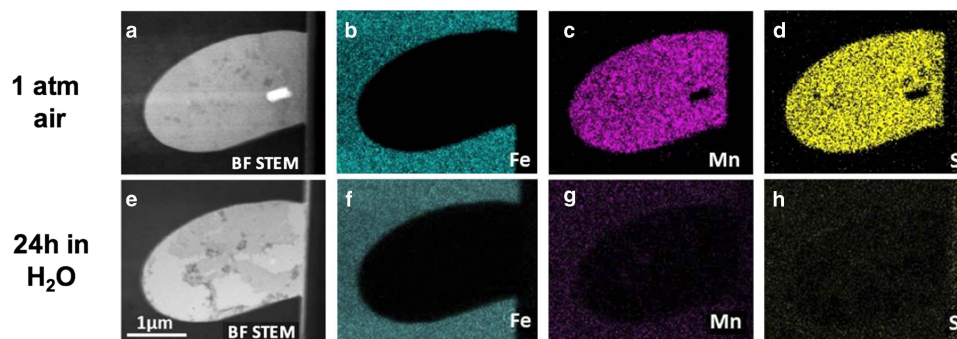


Figure 8. Scanning transmission electron microscopy and scanning transmission electron microscopy-X-ray energy dispersive spectroscopy elemental images extracted from the hyperspectral data sets obtained from a hybrid specimen of 0.03 wt% S in 304 SS containing an MnS inclusion in electrochemical environmental cell. **a–d:** Initial state prior to introduction of H_2O . **e–h:** After 24 h in flowing deionized H_2O , illustrating the room temperature dissolution of the MnS inclusion.

CONCLUSIONS

Using a modified E-chip electrode design and with careful control of instrument parameters, including the electron beam, and also employing hybrid specimen preparation procedure, we have validated a precise procedure for electrochemical studies of traditional metals and alloys during *in situ* TEM studies. Instances of contact corrosion due to non-optimized electrodes can be avoided as long as the cathode surfaces (more noble metal of the contact pair) are very small in relation to the anode surfaces (less noble metal of the contact pair). The evaluation of electron beam effects in distilled H₂O and 0.001 M H₂SO₄ has shown that the conductivity of the electrolyte and its resistance depend on the charge transfer of the electrons in the incident beam and can be mitigated when carefully monitored. The *in situ* liquid cell potentiodynamic polarization curve of Type 304 SS in 0.001 M H₂SO₄ has been successfully measured in the TEM and comparison of conventional, microcell and *in situ* OCP data confirmed that the data generated using the hybrid specimen in the electrochemical E-chip cell were consistent with bulk behavior, although issues still remain in the measurement of current densities. Electrochemical behavior was also conclusively shown to be electron beam dependent and studies can be conducted *in situ* but only with careful monitoring and controlled conditions. Increasing the flow rate can reduce side effects such as pH, temperature differences and corrosion products, albeit with concomitant effects on image quality and resolution. Because of the influence of cell and electrode design, specimen geometry, electrolyte conductivity and flow rate, careful attention must be paid to experimental details during *in situ* TEM electrochemical in order that meaningful and accurate studies can be conducted.

ACKNOWLEDGMENTS

The authors acknowledge the technical assistance of Dr J. Lindsay and X.L. Zhong of the Materials Performance Centre for assistance with FIB specimen preparation. The support from EPSRC PROMINENT programme (EP/1003290/1), Dr M.A. Kulzick and BP, is greatly appreciated. N.J.Z. also acknowledges partial support from the US DOE, Office of Science, Office of Basic Energy Sciences, under contract no. DE-AC02-06CH11357 in the Photon Science Division and the Electron Microscopy Center, in the Center for Nanoscale Materials, Nanoscience and Technology Division of ANL.

REFERENCES

- BAGOTSKY, V.S. (2006). *Fundamentals of Electrochemistry*, The ECS Series of Texts and Monographs, 2nd ed. Hoboken, NJ: Wiley. ISBN: 9780471700586.
- BÖHNI, H., SUTER, T. & ASSI, F. (2000). Micro-electrochemical techniques for studies of localized processes on metal surfaces in the nanometer range. *Surf Coat Technol* **130**(1), 80–86.
- CAZAUX, J. (1995). Correlations between ionization radiation damage and charging effects in transmission electron microscopy. *Ultramicroscopy* **60**(3), 411–425.
- CHEE, S.W., PRATT, S., HATTE, K., DUQUETTE, D., ROSS, F.M. & HULL, R. (2015). Studying localized corrosion using liquid cell transmission electron microscopy. *Chem Commun* **51**(1), 168–171.
- DE JONGE, N., POIRIER, N., DEMERS, H., PECKYS, D.B. & DROUIN, D. (2010). Nanometer-resolution electron microscopy through micrometers-thick water layers. *Ultramicroscopy* **110**(9), 1114–1119.
- DE JONGE, N. & ROSS, F.M. (2017). Liquid cell electron microscopy. In *Liquid Cell Electron Microscopy*, Advances in Microscopy and Microanalysis, Ross, F. (Ed.), pp. 1–34. Cambridge, UK: Cambridge University Press.
- DENS SOLUTIONS (2016). <http://www.denssolutions.com> (retrieved Dec 2016).
- EGERTON, R.F. (2014). Choice of operating voltage for a transmission electron microscope. *Ultramicroscopy* **145**, 85–93.
- EGERTON, R.F., LI, P. & MALAC, M. (2004). Radiation damage in the TEM and SEM. *Micron* **35**(6), 399–409.
- GARRETT, B.C., DIXON, D.A., CAMAIONI, D.M., CHIPMAN, D.M. & JOHNSON, M.A. (2005). Role of water in electron-initiated processes and radical chemistry: Issues and scientific advances. *Chem Rev* **105**(1), 355–390.
- GROGAN, J.M., SCHNEIDER, N., ROSS, F.M. & BAU, H.H. (2013). Bubble and pattern formation in liquid induced by an electron beam. *Nano Lett* **14**(1), 359–364.
- HAMANN, C.H. & VIELSTICH, W. (1997). *Elektrochemie*. Wiley. ISBN 352727894X, 9783527278947. <https://books.google.co.zw/books?id=ccNrRwAACAAJ>
- HOLTZ, M.E., YU, Y., GUNCELER, D., GAO, J., SUNDARARAMAN, R., SCHWARZ, K.A., ARIAS, T.A., ABRUÑA, H.D. & MULLER, D.A. (2014). Nanoscale imaging of lithium ion distribution during *in situ* operation of battery electrode and electrolyte. *Nano Lett* **14**(3), 1453–1459.
- HOLTZ, M.E., YU, Y., RIVERA, J., ABRUÑA, H.D. & MULLER, D.A. (2015). *In situ* TEM for quantitative electrochemistry of energy systems. *Microsc Microanal* **21**(Suppl S3), 1509–1510.
- HUMMINGBIRD SCIENTIFIC (2016). <http://hummingbirdscientific.com/> (retrieved December 2016).
- INZELT, G., LEWENSTAM, A. & SCHOLZ, F. (2013). *Handbook of Reference Electrodes*. Berlin, Heidelberg: Springer-Verlag.
- IVES, D.J.G. & JANZ, G.J. (1961). *Reference Electrodes. Theory and Practice*. New York, NY: Academic Press.
- KASEM, K. (2008). Platinum as a reference electrode in electrochemical measurements. *Platinum Metals Rev* **52**(2), 100.
- KESTEL, B. (1986). *Polishing Methods for Metallic and Ceramic Transmission Electron Microscopy Specimens*, ANL-80-120/Rev.1 Report. Available at NTIS DE89016686 Issue Number 199005 <https://ntrl.ntis.gov/NTRL/dashboard/searchResults.xhtml?searchQuery=ANL-80-120> (retrieved December 2016).
- LI, D., NIELSEN, M.H. & DE YOREO, J.J. (2013). Design, fabrication, and applications of *in situ* fluid cell TEM. In *Research Methods in Biomineralization Science*, De Yoreo, J. (Ed), 1st ed., vol. 532, pp. 147–164. New York, NY: Academic Press.
- LOHRENGEL, M.M. (2004). Electrochemical capillary cells. *Corrosion Eng Sci Technol* **39**, 53–58.
- MARTIN, F., GARCIA, C., TIEDRA, P., BLANCO, Y. & LOPEZ, M. (2008). Application of mini-electrochemical cell to corrosion studies of welded joints of austenitic stainless steel. *Corrosion Eng Sci Technol* **43**(4), 343–352.
- PEREZ, N. (2004). Electrochemistry. In *Electrochemistry and Corrosion Science*, Perez, N. (Ed), pp. 32–68. New York, NY: Kluwer Academic Publisher.
- PIMBLOTT, S.M. & LAVERNE, J.A. (1992). Molecular product formation in the electron radiolysis of water. *Radiat Res* **129**(3), 265–271.

- PIMBLOTT, S.M. & LAVERNE, J.A. (1998). Effect of electron energy on the radiation chemistry of liquid water. *Radiat Res* **150**(2), 159–169.
- PRESTAT, E., SMITH, M., JANSSEN, A., SLATER, T.J., CAMARGO, H.C., KULZICK, M.A., BURKE, M.G., HAIGH, S.J. & ZALUZEC, N.J. (2015). XEDS and EELS in the TEM at atmospheric pressure and high temperature. *Microsc Microanal* **21**(Suppl 3), 247–248.
- PROTOCHIPS INC. (2016). <http://www.protochips.com/> (retrieved Dec 2016).
- SCHILLING, S. (2016). Liquid *in situ* analytical TEM: Technique development and applications to austenitic stainless steel. PhD Thesis, University of Manchester, Manchester, UK.
- SCHILLING, S., JANSSEN, A., ZHONG, X.L., ZALUZEC, N.J. & BURKE, M.G. (2015). Liquid in situ analytical electron microscopy: Examining SCC precursor events for type 304 stainless steel in H₂O. *Proc Microsc Microanal* **21**(Suppl S3), 1291–1292.
- SCHNEIDER, N.M., NORTON, M.M., MENDEL, B.J., GROGAN, J.M., ROSS, F.M. & BAU, H.H. (2014). Electron – water interactions and implications for liquid cell electron microscopy. *J Phys Chem C* **118**(38), 22373–22382.
- VOGEL, A. & SCHULTZE, J.W. (1999). A new microcell for electrochemical surface analysis and reactions. *Electrochim Acta* **44**(21–22), 3751–3759.
- WENDLER-KALSCH, E. & GRÄFEN, H. (1998). *Korrosionsschadenkunde*. Berlin, Heidelberg: Springer.
- WOEHL, T.J., EVANS, J.E., ARSLAN, I., RISTENPART, W.D. & BROWNING, N.D. (2012). Direct in situ determination of the mechanisms controlling nanoparticle nucleation and growth. *ACS Nano* **6**(10), 8599–8610.
- WOEHL, T.J., JUNGJOHANN, K.L., EVANS, J.E., ARSLAN, I., RISTENPART, W.D. & BROWNING, N.D. (2013). Experimental procedures to mitigate electron beam induced artifacts during in situ fluid imaging of nanomaterials. *Ultramicroscopy* **127**, 53–63.
- WRANGLÉN, G. (1974). Pitting and sulphide inclusions in steel. *Corrosion Sci* **14**(5), 331–349.
- ZALUZEC, N.J., BURKE, M.G., HAIGH, S.J. & KULZICK, M.A. (2014). X-ray energy-dispersive spectrometry during *in situ* liquid cell studies using an analytical electron microscope. *Microsc Microanal* **20**, 323–329.
- ZENG, Z., LIANG, W., CHU, Y.H. & ZHENG, H. (2014). In situ TEM study of the Li-Au reaction in an electrochemical liquid cell. *Faraday Discuss* **176**, 95–107.
- ZHENG, H., CLARIDGE, S.A., MINOR, A.M., ALIVISATOS, A.P. & DAHMEN, U. (2009). Nanocrystal diffusion in a liquid thin film observed by in situ transmission electron microscopy. *Nano Lett* **9**(6), 2460–2465.
- ZHONG, X.L., SCHILLING, S., ZALUZEC, N.J. & BURKE, M.G. (2016). Sample preparation methodologies for in situ liquid and gaseous cell analytical transmission electron microscopy of electropolished specimens. *Microsc Microanal* **22**(6), 1350–1359.