

Go Mobile

CJO Mobile (CJOm) is a streamlined
Cambridge Journals Online (CJO)
for smartphones and other
small mobile devices



- Use CJOm to access all journal content including *FirstView* articles which are published online ahead of print
- Access quickly and easily thanks to simplified design and low resolution images
- Register for content alerts or save searches and articles – they will be available on both CJO and CJOm
- Your device will be detected and automatically directed to CJOm via: journals.cambridge.org



CAMBRIDGE
UNIVERSITY PRESS

EDITORIAL POLICY

Journal of Developmental Origins of Health and Disease publishes leading research in the field of developmental origins of health and disease (DOHaD), focusing on how the environment during early animal and human development, and interactions between environmental and genetic factors, influence health in later life and risk of disease. It publishes original research articles, short communications and reviews, and plans regular themed issues, with guest editors; it is also a platform for conference/workshop reports, and for opinion, comment and interaction. The journal is multi-disciplinary, with contributions from basic scientists working in the fields of physiology, nutrition, endocrinology and metabolism, developmental biology, molecular biology and epigenetics, human biology and anthropology, evolutionary developmental biology, and clinicians, nutritionists, epidemiologists, social scientists, economists, public health specialists and policy makers.

SUBSCRIPTIONS

Journal of Developmental Origins of Health and Disease (print ISSN 2040-1744, electronic ISSN 2040-1752) is published bimonthly in February, April, June, August, October and December, 6 parts forming a volume, by Cambridge University Press, The Edinburgh Building, Shaftesbury Road, Cambridge CB2 8RU, UK/Cambridge University Press, 32 Avenue of the Americas, New York, NY 10013-2473, USA. The institutional subscription price (excluding VAT) including electronic access of Volume 2 (2011) is £250 net (US \$413 in the USA, Canada and Mexico). The electronic-only price available to institutional subscribers is £210 (US \$347 in USA, Canada and Mexico). The print-only price available to institutional subscribers is £230 (US \$380 in the USA, Canada and Mexico). Single parts are £42 (US \$70 in the USA, Canada and Mexico) plus postage. Back volumes are also available.

Orders, which must be accompanied by payment, may be sent to a bookseller, subscription agent or direct to the publisher: Cambridge University Press, The Edinburgh Building, Shaftesbury Road, Cambridge CB2 8RU, UK; or in the USA, Canada and Mexico: Cambridge University Press, Journals Fulfillment Department, 100 Brook Hill Drive, West Nyack, New York 10994-2133. EU subscribers (outside the UK) who are not registered for VAT should add VAT at their country's rate. VAT registered subscribers should provide their VAT registration number. Japanese prices for institutions are available from Kinokuniya Company Ltd, PO Box 55, Chitose, Tokyo 156, Japan. Prices include delivery by air.

DOHaD MEMBERS SUBSCRIPTION

Members of the International Society for Developmental Origins of Health and Disease (DOHaD) receive electronic access to the journal as part of their subscription to the Society (Standard membership rate: £45 / US\$70 / €50; Student membership rate: £20 / US\$30 / €22; Developing Country rate: see www.mrc.soton.ac.uk/dohad). For membership application details please visit www.mrc.soton.ac.uk/dohad. For additional print subscription members are asked to contact the Membership Secretary (dohad@mrc.soton.ac.uk) at DOHaD.

COPYRIGHT AND PERMISSIONS

This journal is registered with the Copyright Clearance Center, 222 Rosewood Drive, Danvers, MA 01923, USA. Organizations in the USA

who are also registered with C.C.C. may therefore copy material (beyond the limits permitted by sections 107 and 108 of U.S. Copyright law) subject to payment to C.C.C. of the per-copy fee of \$25.00. This consent does not extend to multiple copying for promotional or commercial purposes. Code 2040-1744/2011 \$25.00.

ISI Tear Sheet Service, 3501 Market Street, Philadelphia, PA 19104, USA, is authorized to supply single copies of separate articles for private use only.

Organizations authorized by the Copyright Licensing Agency may also copy material subject to the usual conditions.

For all other use, permission should be sought from Cambridge or the American Branch of Cambridge University Press.

ABSTRACTING AND INDEXING

Journal of Developmental Origins of Health and Disease is covered by Science Citation Index Expanded (also known as SciSearch®), Biosis Abstracts, and Biosis Previews.

ADVERTISING

Advertising queries for all parts of the world except the USA, Canada and Mexico to: ad_sales@cambridge.org

Address enquiries in the USA, Mexico and Canada only to: usadsales@cambridge.org

OTHER BUSINESS CORRESPONDENCE

All other business correspondence should be sent to Dan Edwards, Commissioning Editor: dedwards@cambridge.org

INSTRUCTIONS FOR CONTRIBUTORS

Full Instructions for Contributors are available for download from journals.cambridge.org/doh

INTERNET ACCESS

This journal is included in the Cambridge Journals Online service which can be found at journals.cambridge.org. For further information on other Press titles access cambridge.org

DISCLAIMER

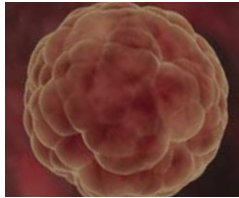
The views expressed in this journal represent those of the authors only. In no way can they be construed to necessarily reflect the views of either the Editors, the Publishers, or the Society.

© Cambridge University Press and the International Society for Developmental Origins of Health and Disease 2011

Printed in the United Kingdom by Latimer Trend, Plymouth

This journal issue has been printed on FSC-certified paper and cover board. FSC is an independent, non-governmental, not-for-profit organization established to promote the responsible management of the world's forests. Please see www.fsc.org for information.

JOURNAL OF DEVELOPMENTAL ORIGINS OF HEALTH AND DISEASE



CONTENTS

Special Issue: The Early Determinants of Adult Health Study

REVIEW

The Early Determinants of Adult Health Study

E. Susser, S. Buka, C. A. Schaefer, H. Andrews, P. M. Cirillo, P. Factor-Litvak, M. Gillman, J. M. Goldstein, P. Ivey Henry, L. H. Lumey, I. W. McKeague, K. B. Michels, M. B. Terry and B. A. Cohn for the EDAH Team

311

ORIGINAL ARTICLES

Analyzing growth trajectories

I. W. McKeague, S. López-Pintado, M. Hallin and M. Šiman

322

Birth size and adult size in same-sex siblings discordant for fetal growth in the Early Determinants of Adult Health study

L. H. Lumey, E. Susser, H. Andrews and M. W. Gillman

330

Prenatal smoke exposure and mammographic density in mid-life

M. B. Terry, C. A. Schaefer, J. D. Flom, Y. Wei, P. Tehranifar, Y. Liao, S. Buka and K. B. Michels

340

Sex-specific impact of maternal-fetal risk factors on depression and cardiovascular risk 40 years later

J. M. Goldstein, S. Cherkerzian, S. L. Buka, G. Fitzmaurice, M. Hornig, M. Gillman, S. O'Toole and R. P. Sloan

353

Associations between birth weight, preeclampsia and cognitive functions in middle-aged adults

P. Factor-Litvak, N. Straka, S. Cherkerzian, M. Richards, X. Liu, A. Sher, G. Neils and J. Goldstein

365

Effect of maternal coffee, smoking and drinking behavior on adult son's semen quality: prospective evidence from the Child Health and Development Studies

P. M. Cirillo, B. A. Cohn, N. Y. Krigbaum, M. Lee, C. Brazil and P. Factor-Litvak

375