







Kinematics of multiple stellar populations in Globular Clusters with Gaia

G. Cordoni¹, A. P. Milone¹, A. Mastrobuono-Battisti²,
A. F. Marino^{1,3}, E. P. Lagioia¹ and M. Tailo¹

¹Dipartimento di Fisica e Astronomia “Galileo Galilei” - Univ. di Padova
Vicolo dell’Osservatorio 3, Padova, IT-35122

²Max-Planck Institut für Astronomie, Königstuhl 17, D-69117 Heidelberg, Germany

³Centro di Ateneo di Studi e Attività Spaziali “Giuseppe Colombo” - CISAS
Via Venezia 15, Padova, IT-35131

Abstract. The internal dynamics of multiple stellar populations in Globular Clusters (GCs) provides unique constraints on the physical processes responsible for their formation. Specifically, the present-day kinematics of cluster stars, such as rotation and velocity dispersion, seems to be related to the initial configuration of the system. In recent work (Milone et al. 2018), we analyzed for the first time the kinematics of the different stellar populations in NGC 0104 (47 Tucanae) over a large field of view, exploiting the Gaia Data Release 2 proper motions combined with multi-band ground-based photometry. In this paper, based on the work by Cordoni et al. (2019), we extend this analysis to six GCs, namely NGC 0288, NGC 5904 (M 5), NGC 6121 (M 4), NGC 6752, NGC 6838 (M 71) and further explore NGC 0104. Among the analyzed clusters only NGC 0104 and NGC 5904 show significant rotation on the plane of the sky. Interestingly, multiple stellar populations in NGC 5904 exhibit different rotation curves.

Keywords. globular clusters: general, stars: population II, stars: abundances, dynamics

1. Introduction

Studies based on *Hubble Space Telescope* (*HST*) images revealed that the photometric diagrams of nearly all GCs are composed of two main groups of first-generation (1G) and second-generation stars (2G, e.g. Milone et al. 2017), with different chemical compositions. Many efforts have been made to understand their origin, but, so far, none of the proposed scenarios have been able to reach a satisfactory agreement with the observations.

According to many of these scenarios, 2G stars formed out of the ejecta of more massive 1G stars after the segregation of the gas in the cluster center. As a consequence, 2G stars formed in a more centrally-concentrated environment, with respect to that of 1G stars. As an alternative hypothesis, GCs host a single stellar generation and stars with different chemical composition are the product of exotic physical phenomena specific of proto-GCs.

An important signature of the physical processes responsible for the formation of multiple populations is the kinematics of cluster stars. Specifically, *N*-body simulations suggest that the dynamical evolution of more centrally-concentrated 2G stars should be significantly different from that of 1G stars, and such difference could still be observable in present-day GC kinematics (Vesperini et al. 2013; Hénault-Brunet et al. 2015; Mastrobuono-Battisti & Perets 2016).

In the past decade, nearly all works on the kinematics of GCs were based on radial velocities of a relatively-small sample of stars. More recently, *HST* provided high-precision relative proper motions of a small but increasing number of clusters, namely NGC 0104 (47 Tucanae), NGC 0362, NGC 2808, NGC 5139 and NGC 6352 that allowed the

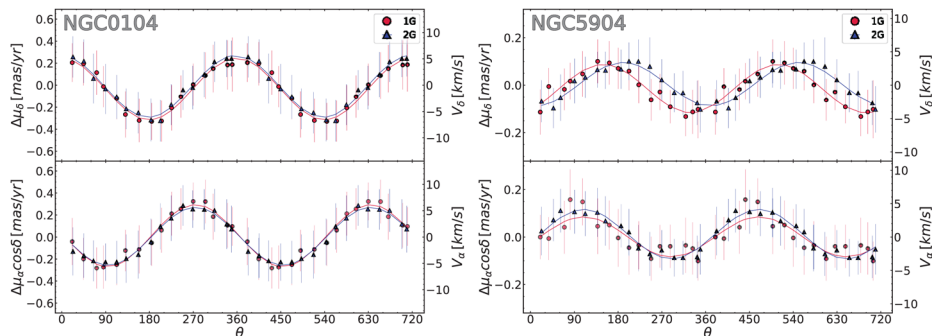


Figure 1. Rotation curve for the 1G and 2G stars in NGC 0104 (left panel) and NGC 5904 (right panel).

investigation of the kinematics of multiple populations on the plane of the sky (e.g. Richer *et al.* 2013; Bellini *et al.* 2015). While these works are based on high-precision relative proper motions of thousands of stars, the small field of view of *HST* does not allow the study of the entire cluster. To overcome this shortcoming and study the kinematics of multiple stellar populations over a large field of view, we started a project based on Gaia Data Release 2 (Gaia DR2, Gaia Collaboration *et al.* 2018) accurate proper motions and multi-band wide-field ground-based photometry (Stetson *et al.* 2019). In the pilot paper of this project, we investigated for the first time the kinematics of 1G and 2G stars of NGC 0104 over a wide field of view, up to ~ 18 arcmin from the cluster center (corresponding to ~ 22 pc, Milone *et al.* 2018). In this work, we further analyse NGC 0104 and extend the study to other six Galactic GCs, namely NGC 0288, NGC 5904 (M 5), NGC 6121 (M 4), NGC 6254 (M 10), NGC 6752 and NGC 6838 (M 71).

2. Method and results

2.1. Rotation

To study the kinematics of multiple stellar populations over a large field of view, we exploit the pseudo color $C_{U,B,I} = (U - B) - (B - I)$, which provides an efficient tool to identify stellar populations with different light-element abundance along the RGB, to identify 1G and 2G stars.

As a first step, we determined cluster memberships of each star exploiting Gaia DR2 accurate proper motions, parallaxes and astrometric quality parameter, and we corrected our photometry for differential reddening.

For each cluster, we studied the internal rotation of 1G and 2G stars on the plane of the sky by means of Gaia DR2 proper motions. Figure 1 shows the median motions in different angular regions for 1G and 2G stars in NGC 0104 and NGC 5904, which are the two clusters with clear evidence of rotation. Interestingly, the two populations of NGC 5904 exhibit different rotation, and in particular the phase shift between the rotation curves of 1G and 2G stars in the μ_δ component is significant at 3σ level. On the other hand, NGC 0104 is consistent with two populations sharing the same rotation. However, some hints of different rotations between 1G and 2G stars are observed in the external regions of this cluster. There is no evidence for rotation in 1G and 2G stars of the remaining clusters (NGC 0288, NGC 6121, NCG 6254, NGC 6752 and NGC 6838).

2.2. Internal kinematics

To study the internal motion of stars as a function of the radial distance from the cluster center we divided the cluster field into different circular annuli, and for each one

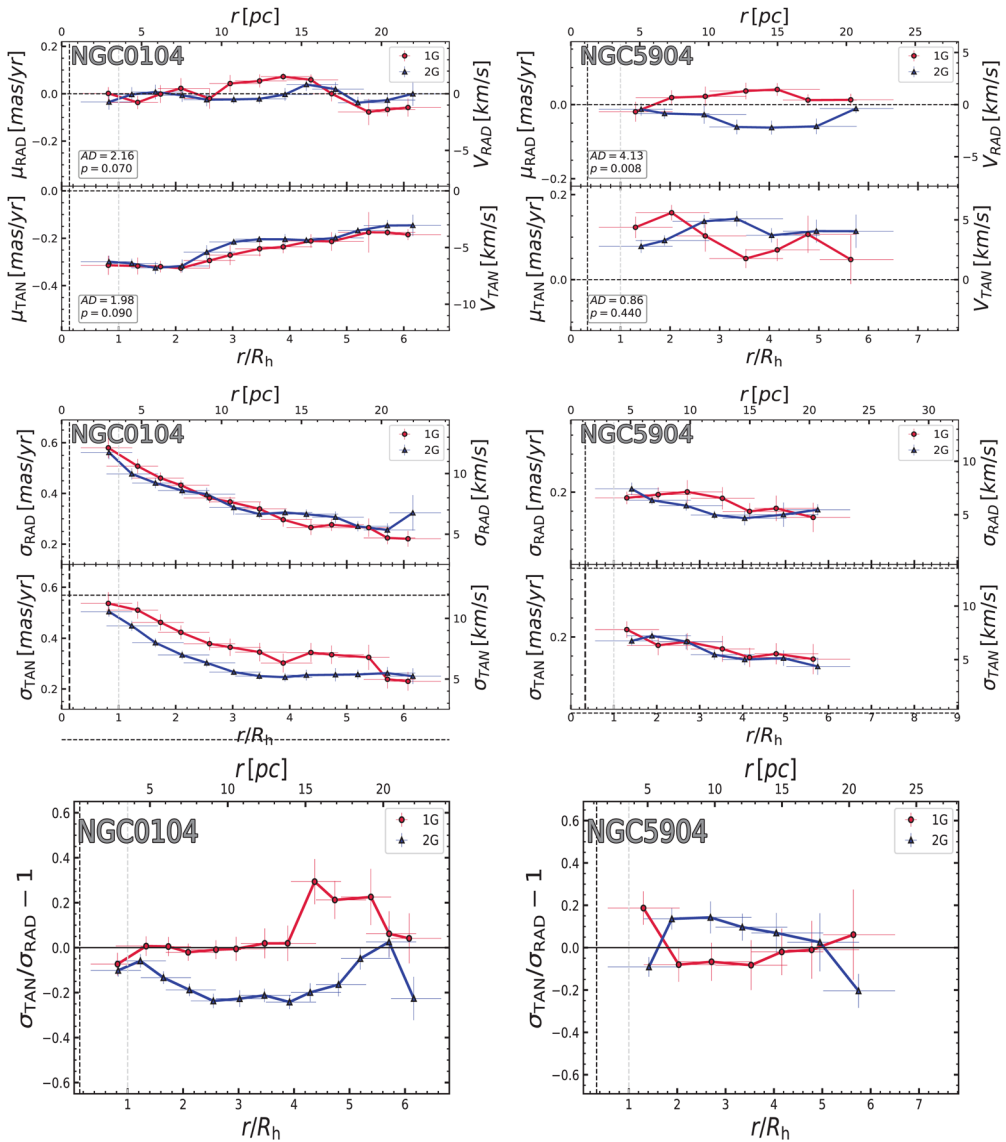


Figure 2. Median profile, velocity dispersion profile and anisotropy profile of NGC 0104 (left panels) and NGC 5904 (right panels).

we computed the median radial (μ_{RAD}) and tangential (μ_{TAN}) components of proper motions for 1G and 2G stars, on the plane of the sky. We then derived the velocity dispersion profiles, σ_{RAD} , σ_{TAN} , and the anisotropy profile $\sigma_{\text{TAN}}/\sigma_{\text{RAD}} - 1$, shown in Figure 2.

Most of the GCs show that their two main populations share similar velocity profiles and any difference between the velocities of 1G and 2G stars is smaller than ~ 1 km/s. NGC 5904 is a remarkable exception. Indeed, between ~ 2 to ~ 5 half-light radii (R_h) from the center, 1G stars exhibit higher radial motions than 2G stars. NGC 0104 exhibits a similar, but milder, trend. Small tangential velocity differences ($\lesssim 1$ km/s) between 2G and 1G stars are also present in NGC 6254 and NGC 6752.

We confirm that NGC 0104 exhibits strong differences in the degree of anisotropy of the two populations, with the 2G being more radially anisotropic than the 1G. Besides NGC 0104, also NGC 6752 and NGC 6838 show hints of a more radially anisotropic 2G within $\sim 1\text{--}2 R_h$ from the cluster center. On the other hand, our results suggest a more tangential anisotropic 1G within $\sim 1R_h$ for NGC 6121. The remaining clusters are consistent with being isotropic stellar systems.

All our findings constitute strong constraints for existing and future multiple population scenarios. Self-enrichment scenarios, and in particular the AGB scenario, seem to be able to produce different spatial distribution and kinematics between the first and second generation. This scenario, which is the one that have been studied more in detail in terms of dynamics, predicts a higher central concentration for 2G with respect to 1G stars. 1G stars have higher velocity dispersion compared to 2G stars and they show a smaller amount of radial anisotropy. However, all these signatures could be washed out by the two-body relaxation of the clusters (Mastrobuono-Battisti & Perets 2016).

This work constitutes the first coherent analysis of the dynamics of multiple stellar populations over a wide field of view, and adds new important constraints to our understanding of the multi-populations phenomenon.

Acknowledgments

This work has received funding from the European Research Council (ERC) under the European Union's Horizon 2020 research innovation programme (Grant Agreement ERC-StG 2016, No 716082 'GALFOR', PI: Milone, <http://progetti.dfa.unipd.it/GALFOR>), and the European Union's Horizon 2020 research and innovation programme under the Marie Skłodowska-Curie (Grant Agreement No 797100, beneficiary: Marino). APM and MT acknowledge support from MIUR through the FARE project R164RM93XW SEMPLICE (PI: Milone). AMB acknowledges support by Sonderforschungsbereich (SFB) 881 'The Milky Way System' of the German Research Foundation (DFG).

References

- Bellini, A., Vesperini, E., Piotto, G., *et al.* 2015, *ApJL*, 810, L13
Cordoni, G., Milone, A. P., Mastrobuono-Battisti, A. *et al.* 2019, *arXiv*, e-prints, [1905.09908](https://arxiv.org/abs/1905.09908)
Hénault-Brunet, V., Gieles, M., Agertz, O., & Read, J. I. 2015, *MNRAS*, 450, 1164
Gaia Collaboration, Brown, A. G. A., Vallenari, A., *et al.* 2018, *A&A*, 616, A1
Gaia Collaboration, Helmi, A., van Leeuwen, F., *et al.* 2018, *A&A*, 616, 12G
Mastrobuono-Battisti, A. & Perets, H. B. 2016, *ApJ*, 823, 61
Milone, A. P., Piotto, G., Renzini, A., *et al.* 2017, *MNRAS*, 464, 3636
Milone, A. P., Marino, A. F., Mastrobuono-Battisti, A., & Lagioia, E. P. 2018, *MNRAS*, 479, 5005
Richer, H. B., Heyl, J., Anderson, J., *et al.* 2013, *ApJL*, 771, L15
Stetson, P. B., Pancino, E., Zocchi, A., *et al.* 2019, *MNRAS*, 485, 3042
Vesperini, E., McMillan, S. L. W., D'Antona, F., & D'Ercole, A. 2013, *MNRAS*, 429, 1913