

Fig.1 Engraved south elevation, Kings Weston [6]

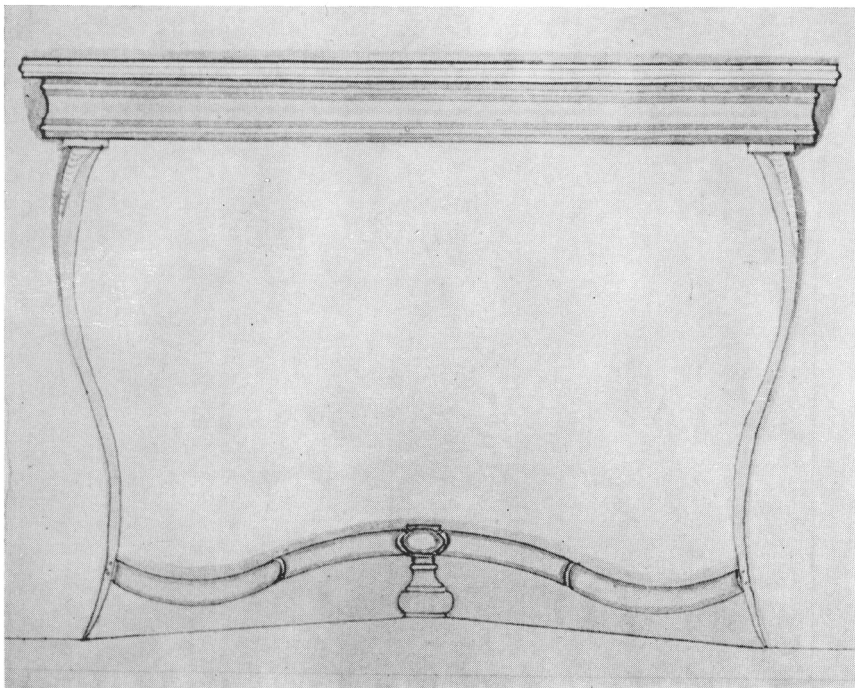


Fig.2 Design for a cartouche [7]

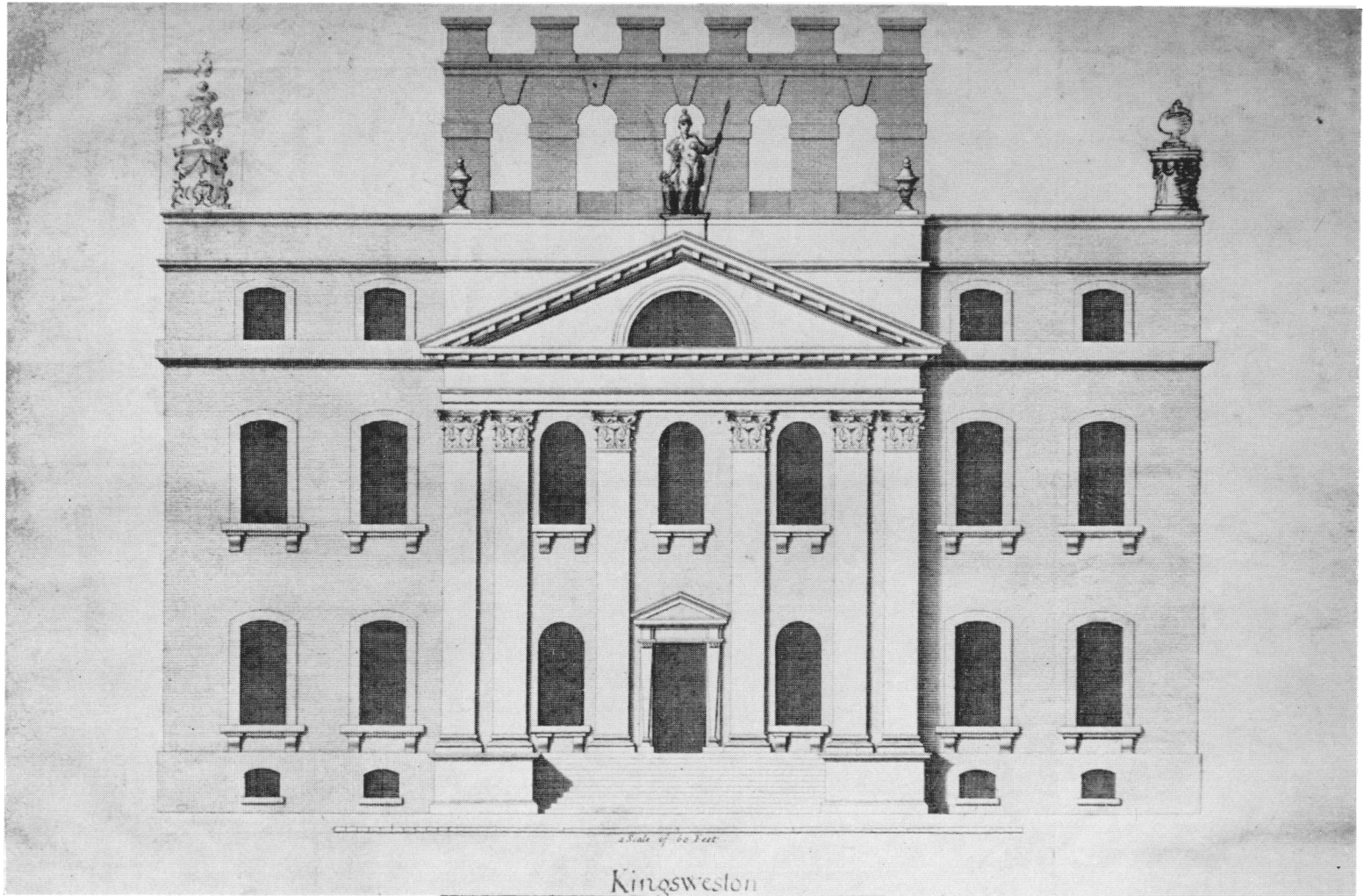


Fig. 3 Engraved south elevation, Kings Weston [1]

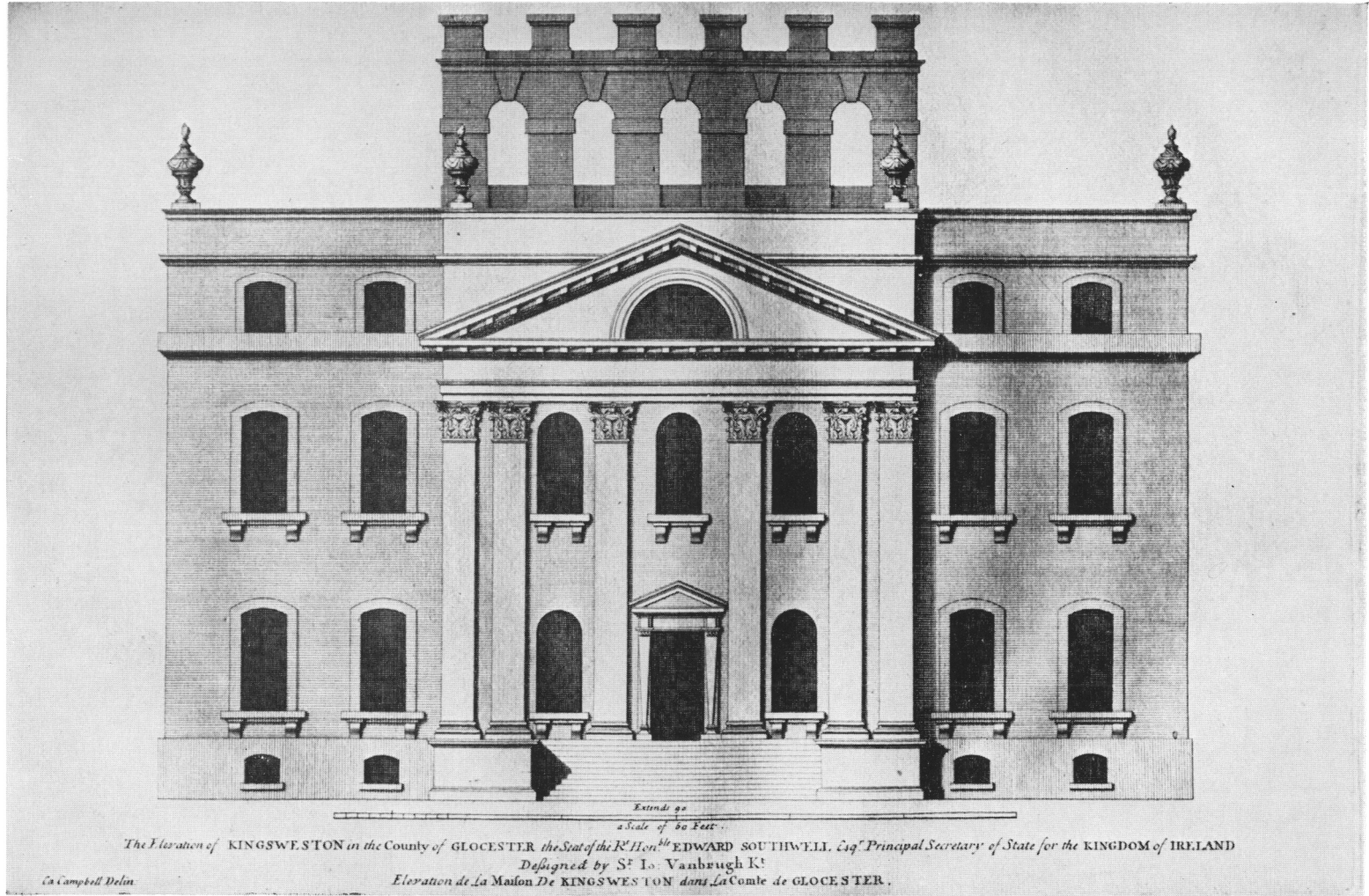


Fig. 4 Engraved south elevation, Kings Weston [Vitruvius Britannicus]

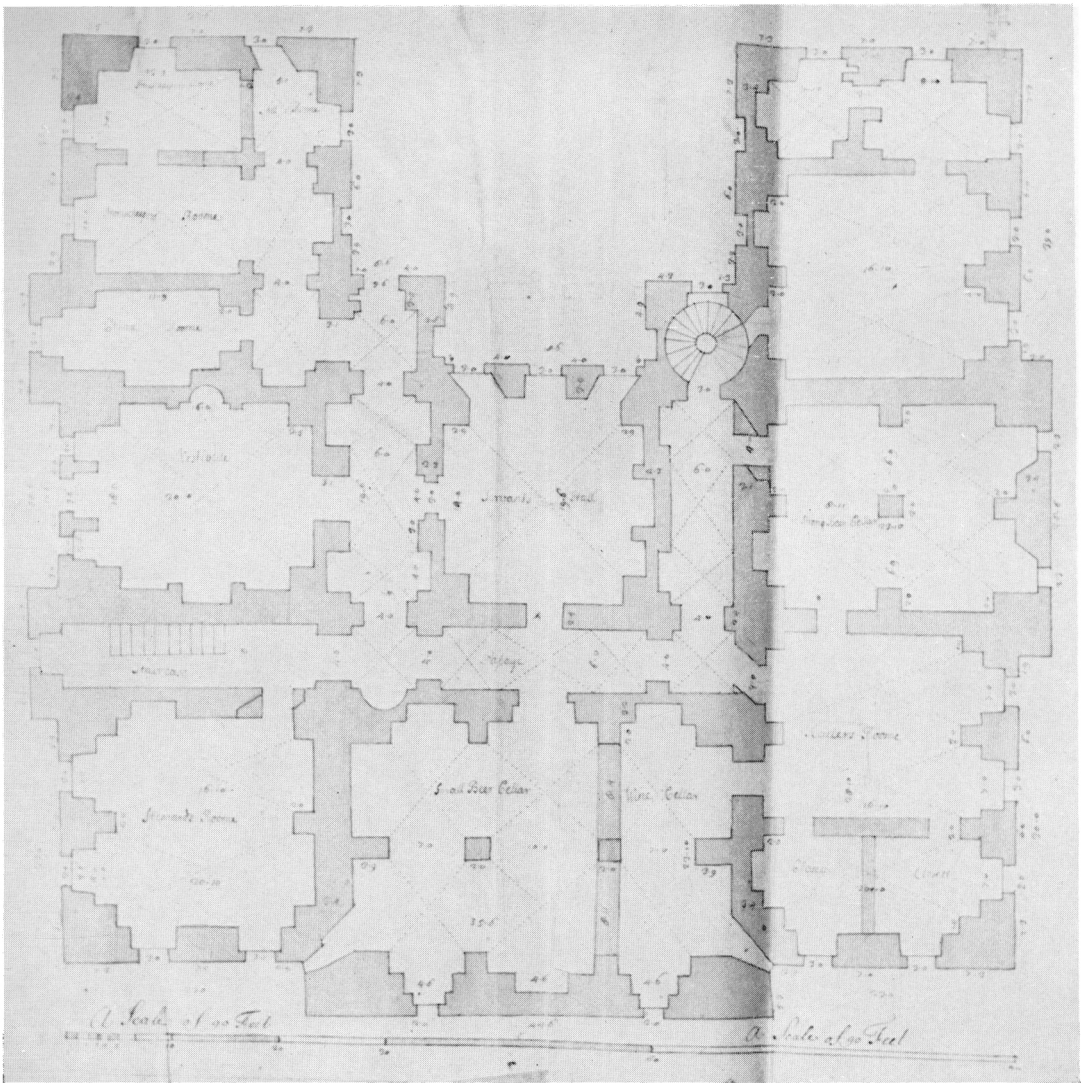


Fig.5 Basement plan, Kings Weston [123]

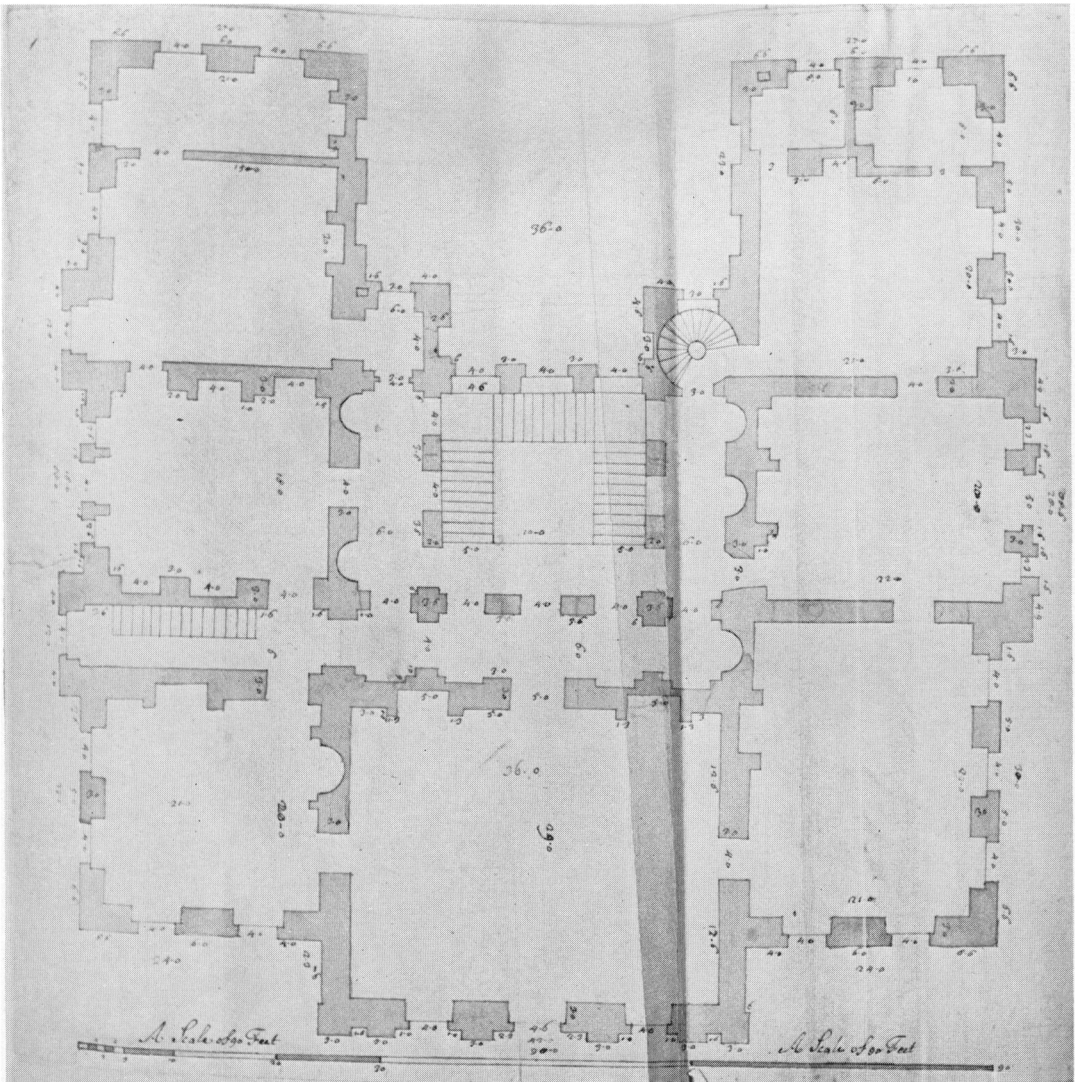


Fig.6 Ground floor plan, Kings Weston [112]

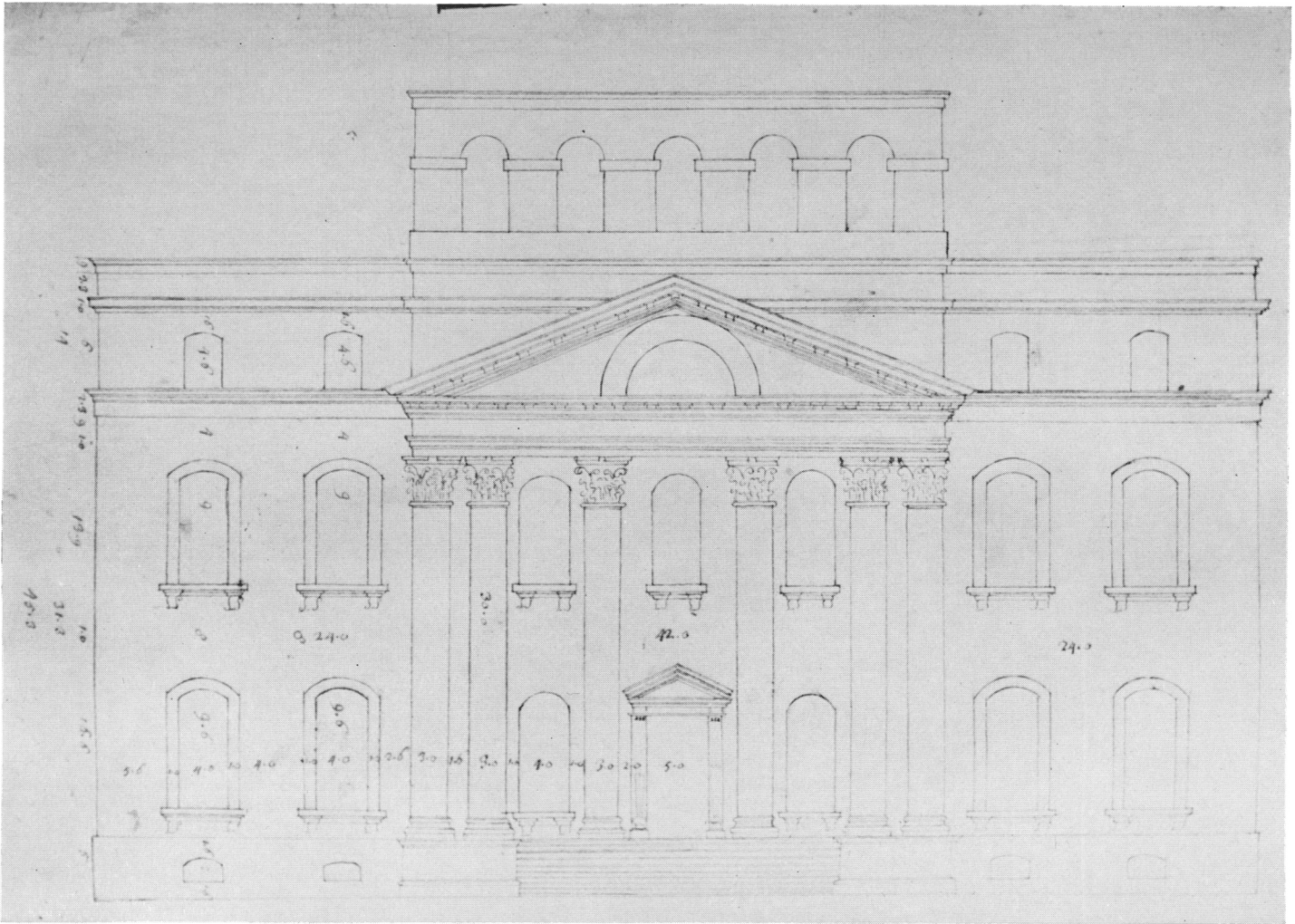


Fig.7 South (entrance) elevation, Kings Weston [67]

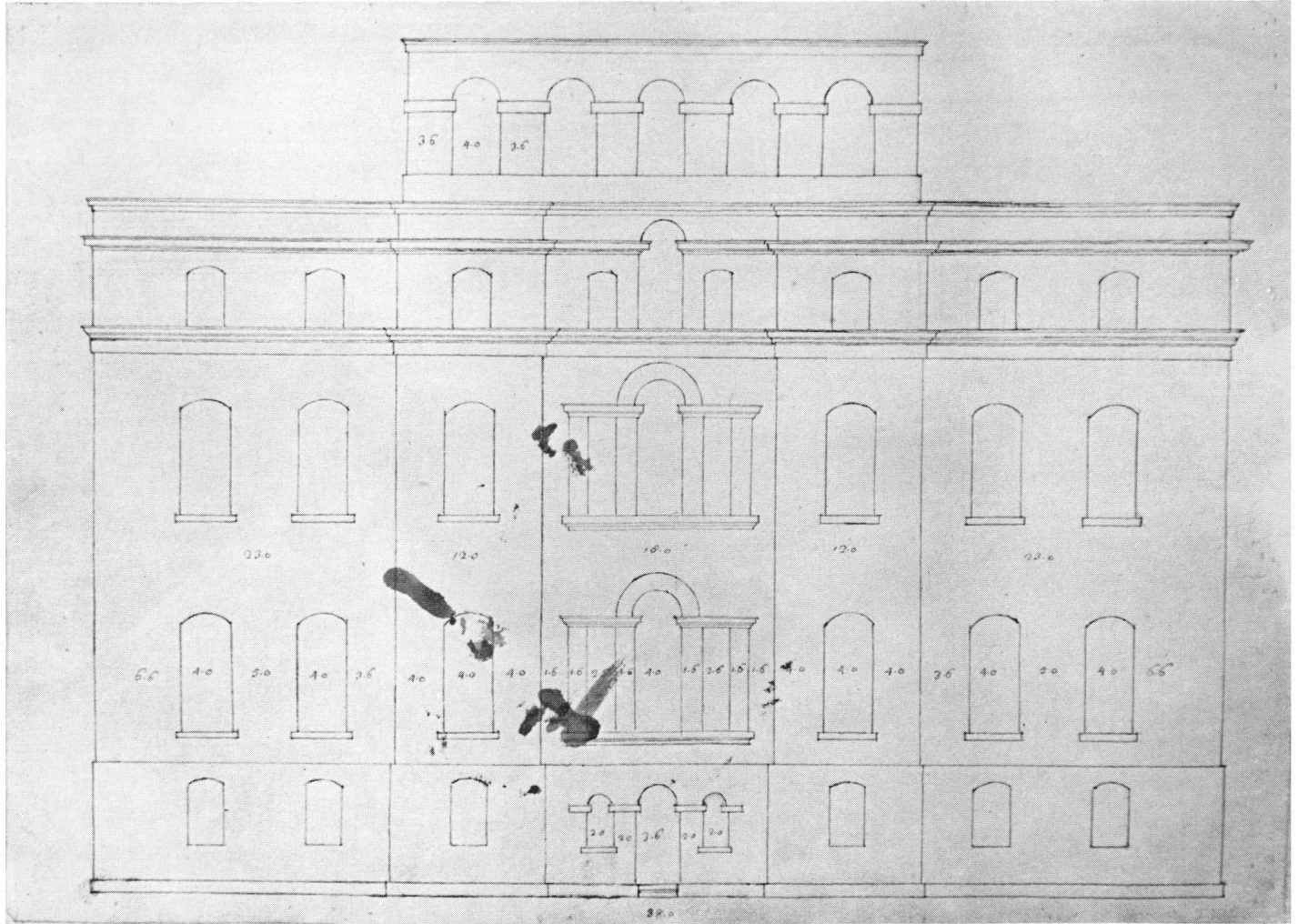


Fig.8 West elevation, Kings Weston [14]

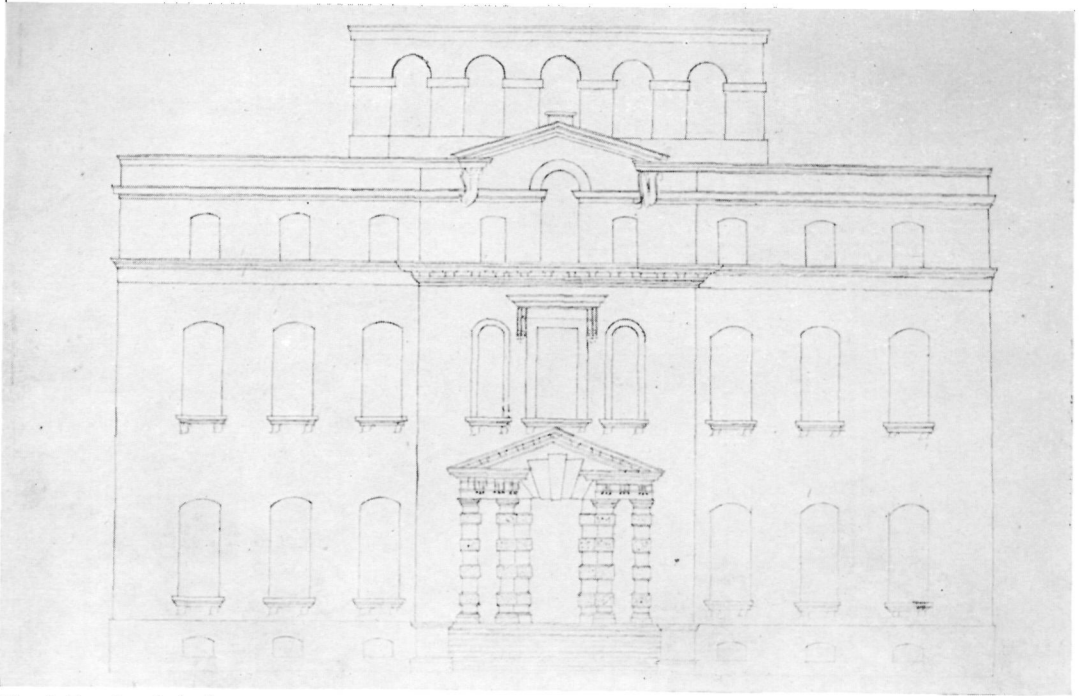


Fig.9 East (garden) elevation, Kings Weston [113]

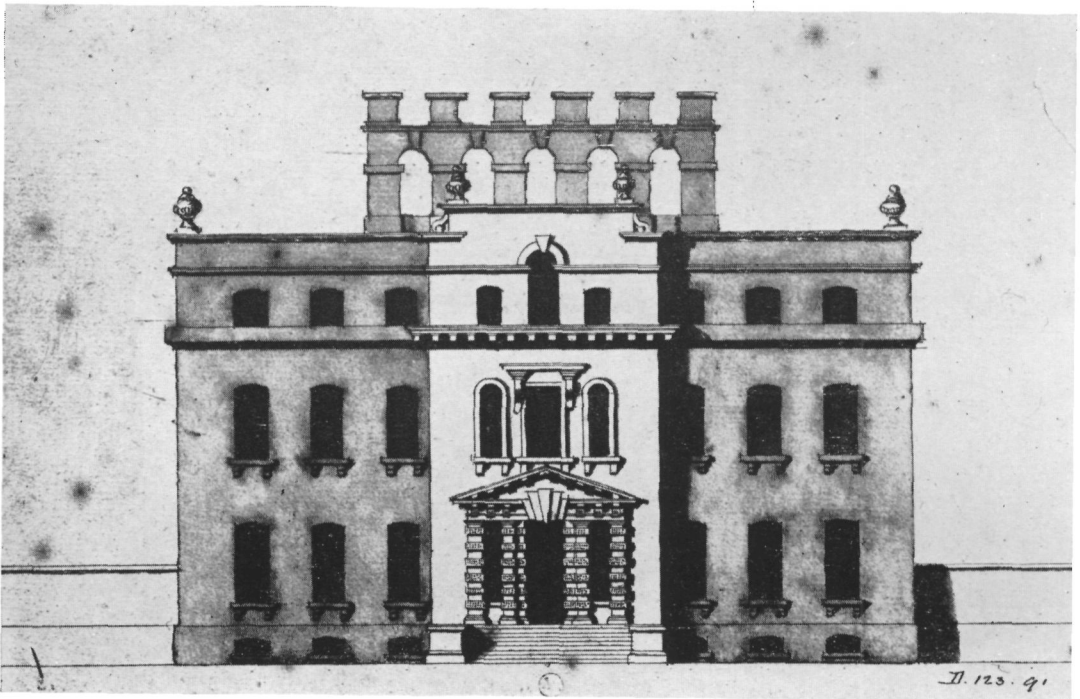


Fig.10 East elevation, Kings Weston [Victoria & Albert Museum]

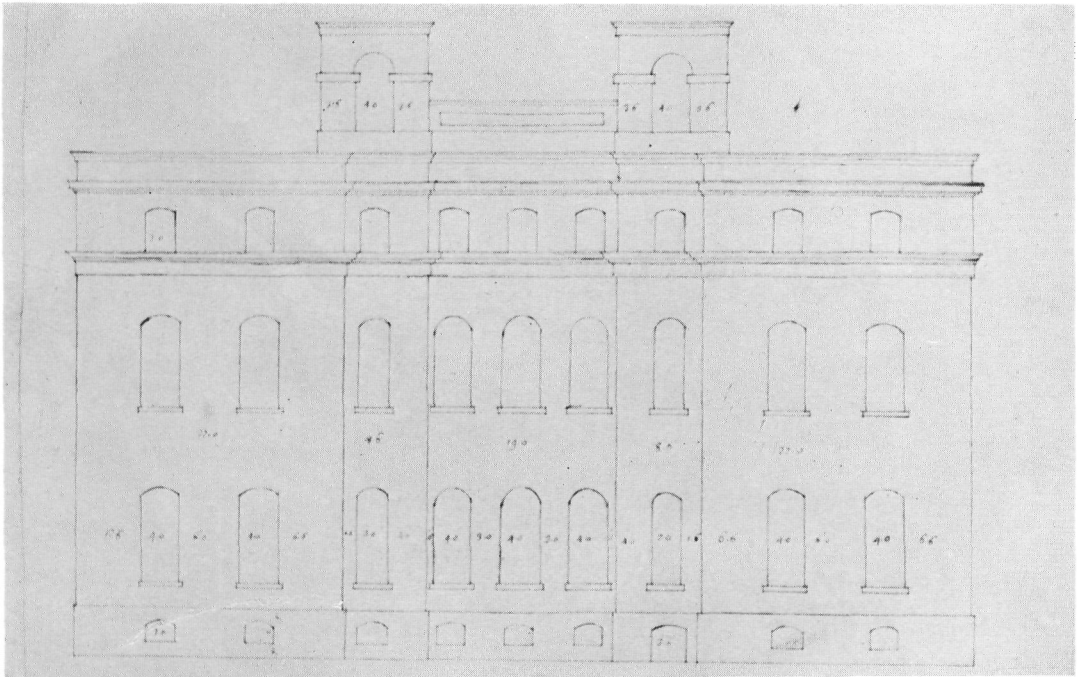


Fig.11 North elevation, Kings Weston [111]

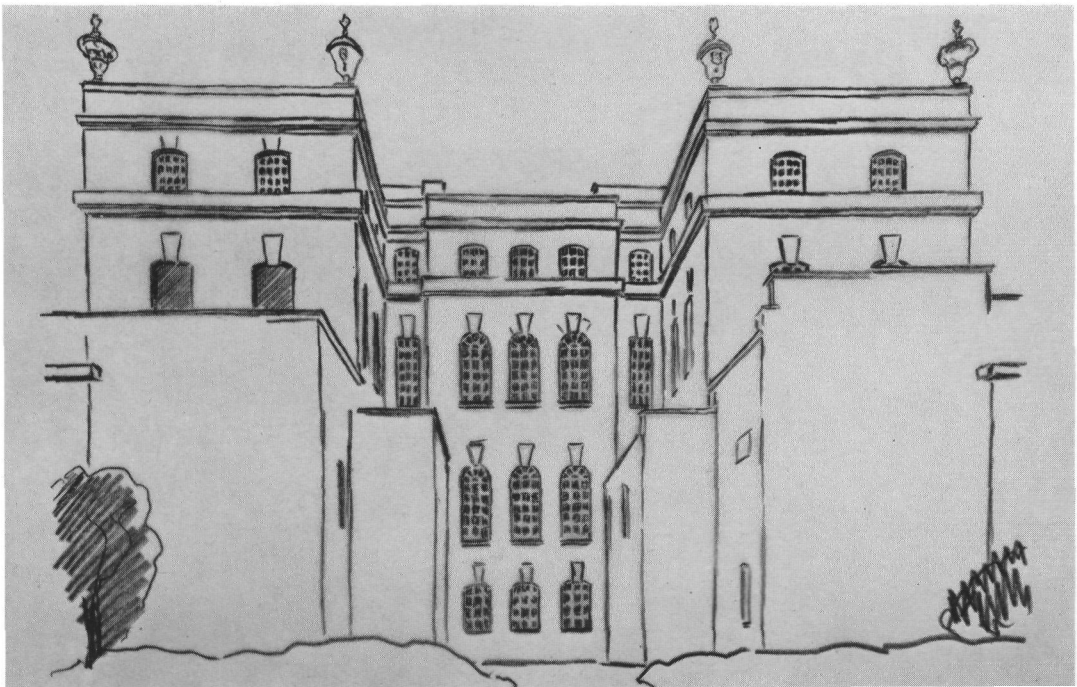


Fig.12 North side of Kings Weston, showing later additions in outline



Fig. 13 Copy of contract and drawing for urn on north front, Kings Weston, 1717 [19]



Fig. 14 Urn on north front, Kings Weston

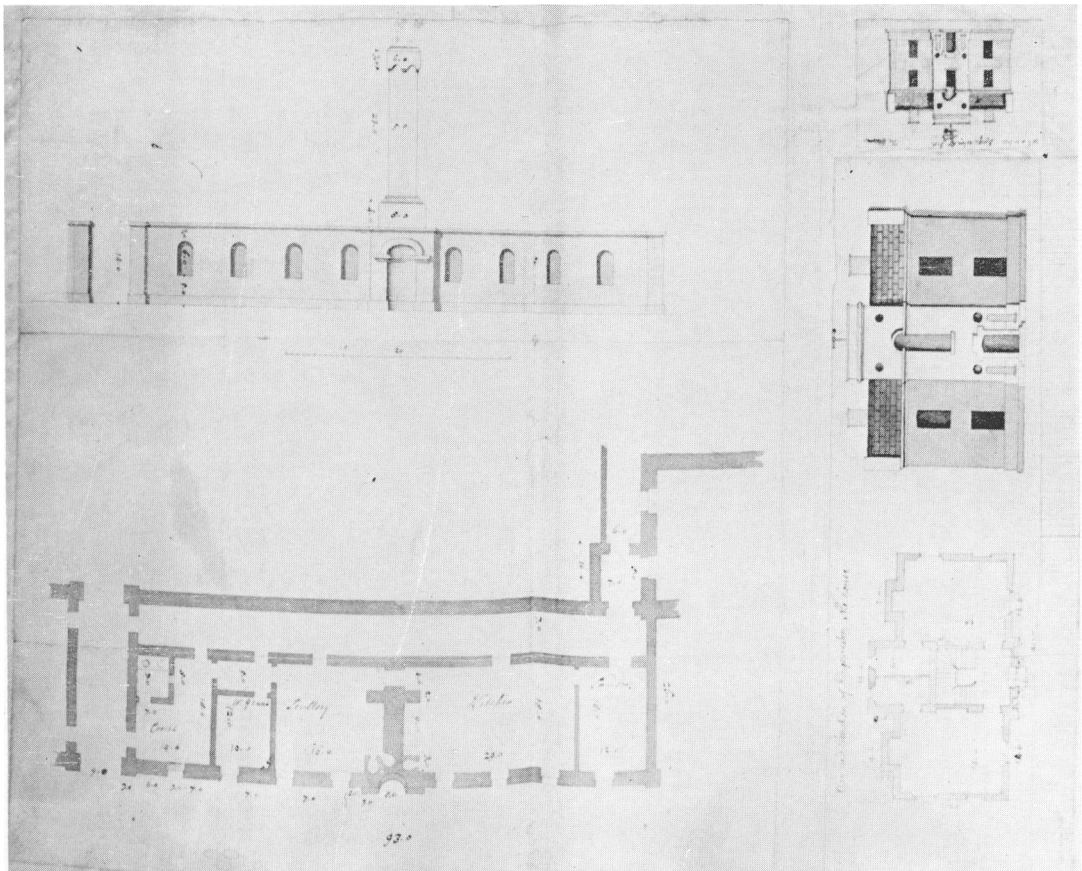


Fig. 15 Plan and elevation of kitchen wing and designs for ale-house, Kings Weston [34-36]

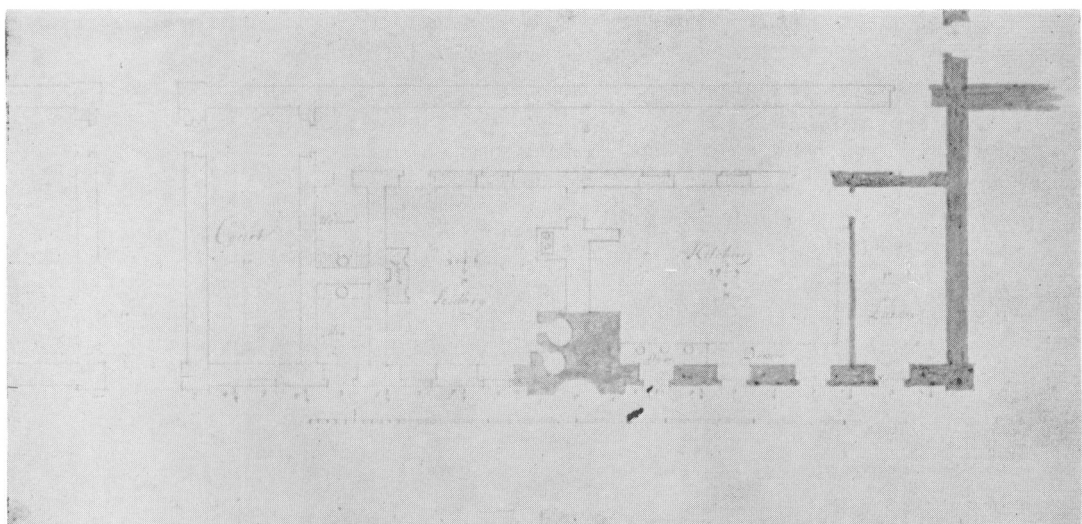


Fig. 16 Plan of kitchen wing, Kings Weston [94]

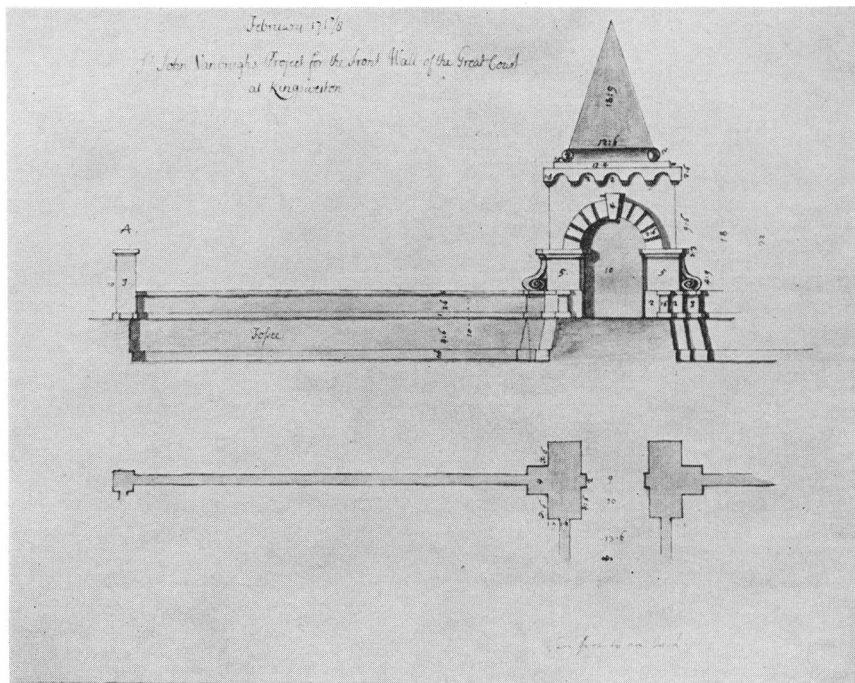


Fig. 17 Plan and elevation of forecourt gate for Kings Weston [17]

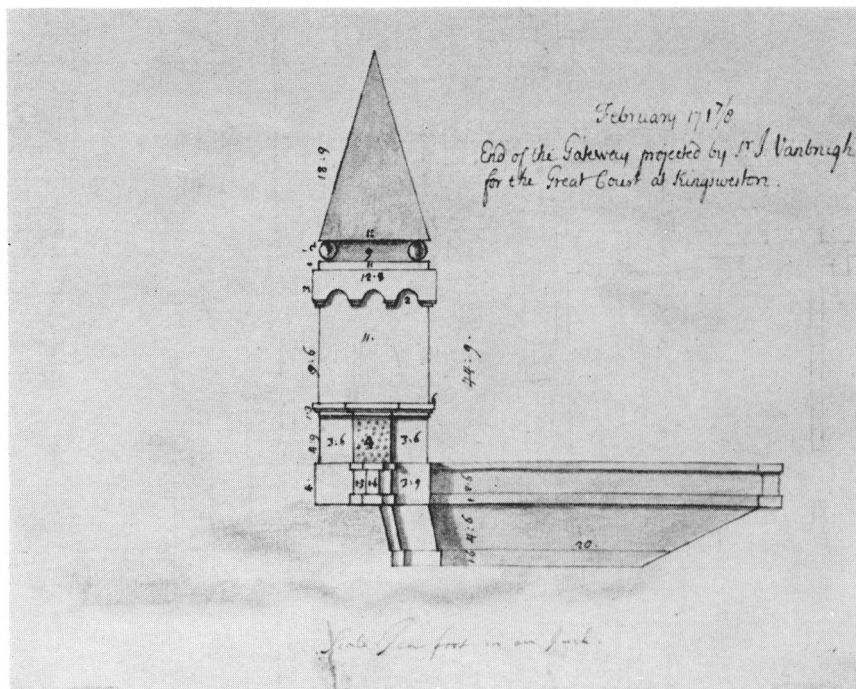


Fig. 18 End elevation of forecourt gate for Kings Weston [66]

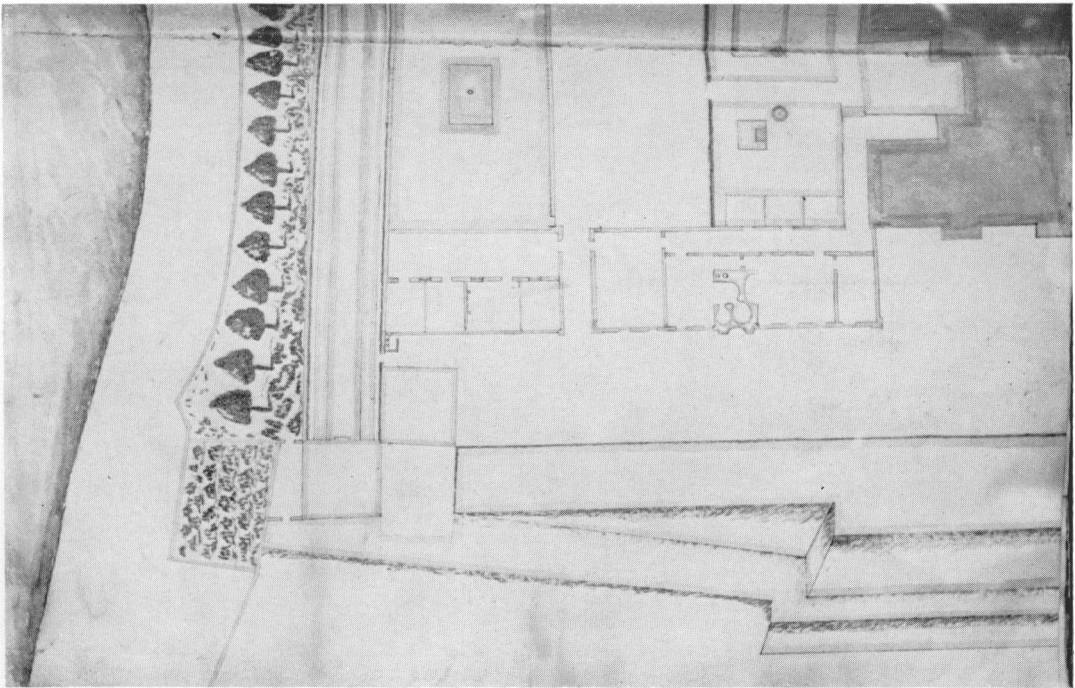


Fig.19 Plan of north garden and west terrace, Kings Weston [52]

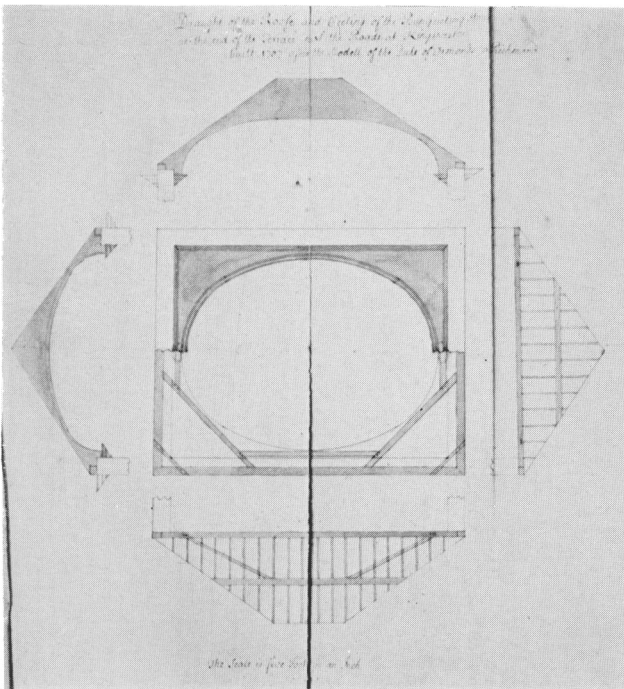


Fig.20 Roof and ceiling of the banqueting house, Kings Weston [42]

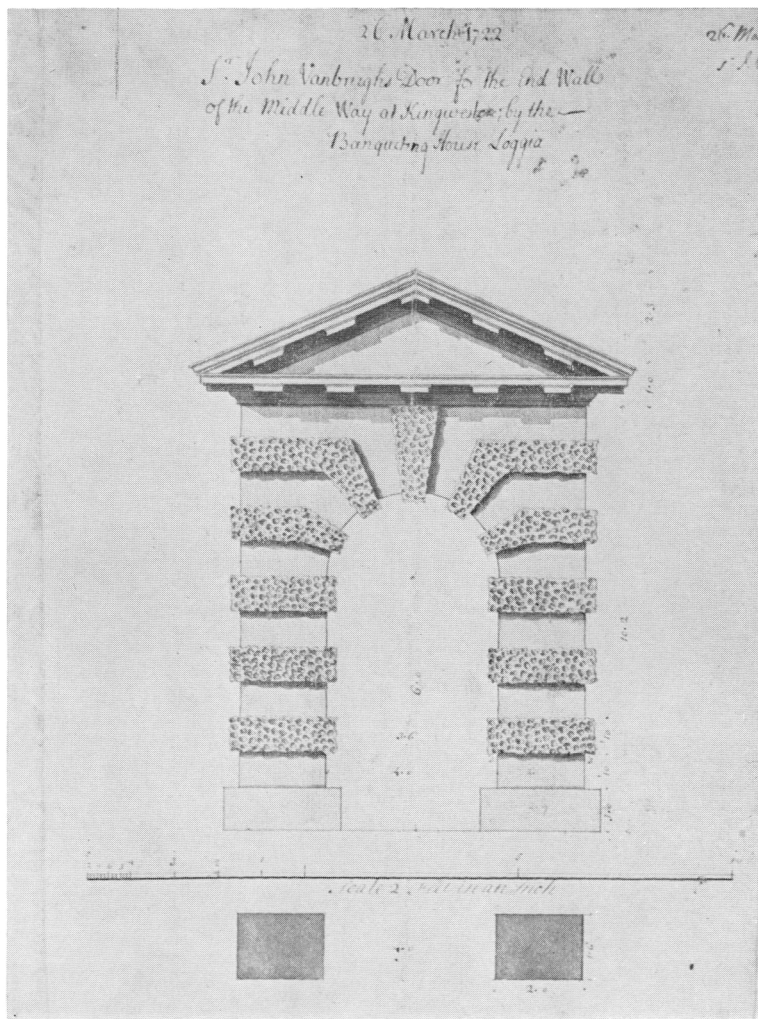


Fig.21 Design for east garden door, Kings Weston, 1722 [16]

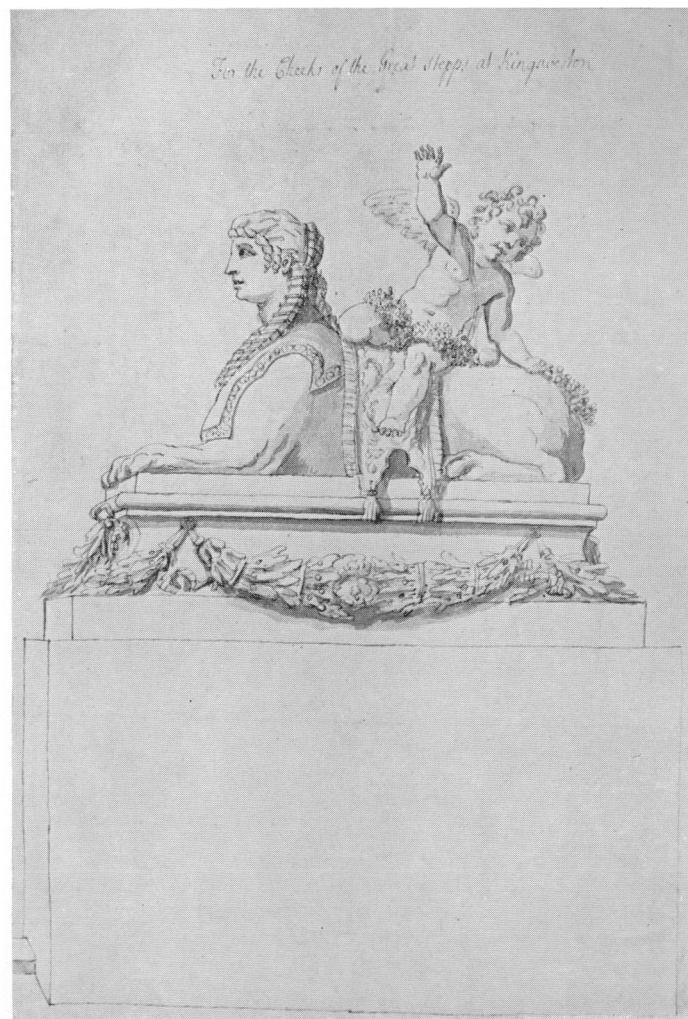


Fig.22 Design for a sphinx, Kings Weston [8]

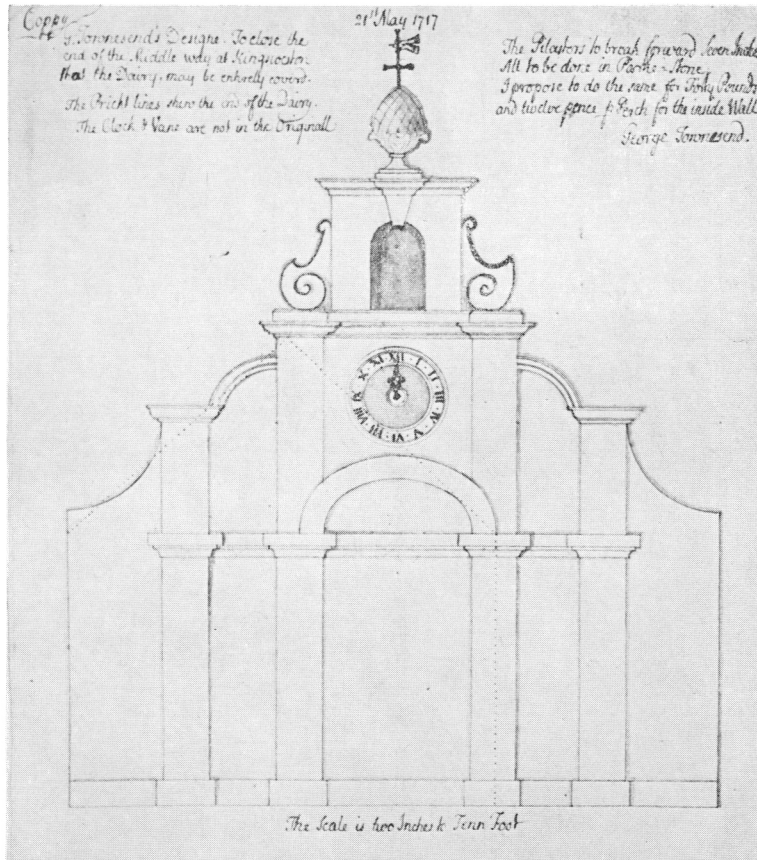


Fig.23 Design for dairy front, Kings Weston, by George Townsend [38]

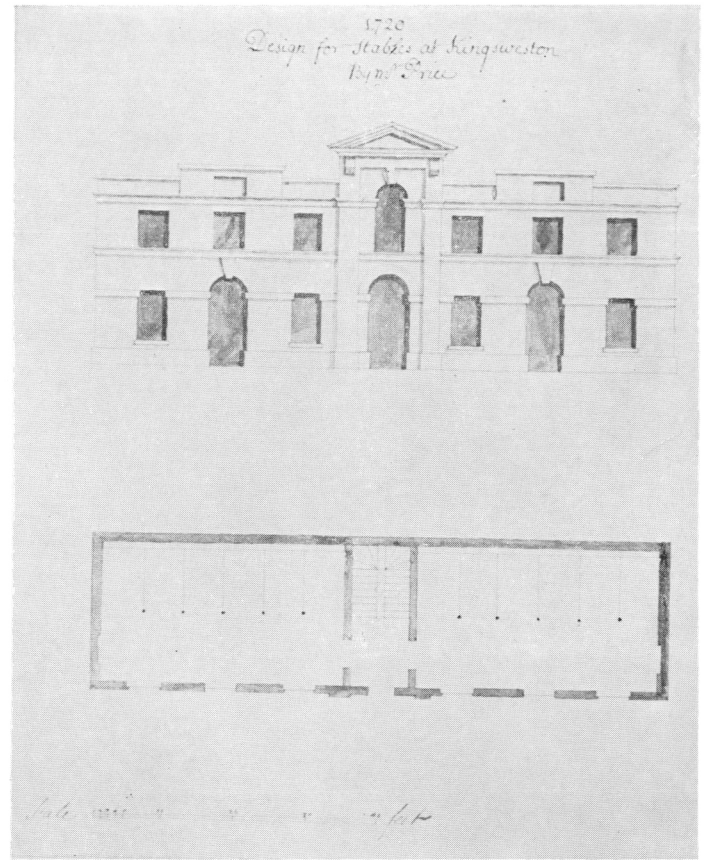


Fig.24 Design for stables at Kings Weston by Mr Price, 1720 [4]

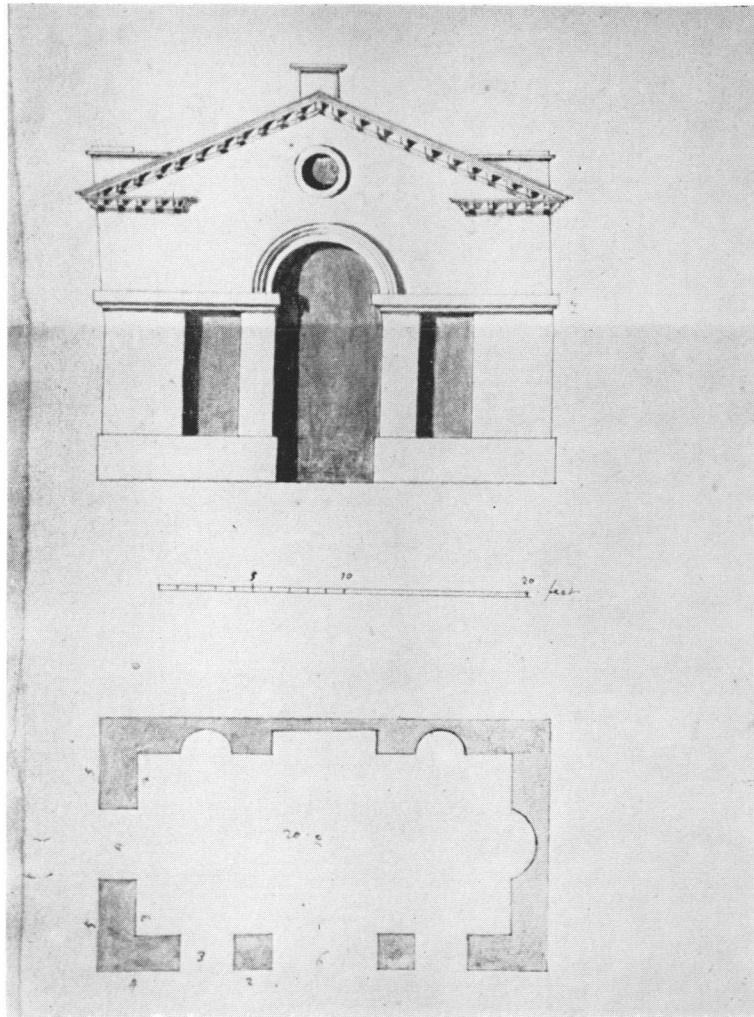


Fig.25 Design for the loggia north-west of Kings Weston
[Copy of Fig. 26, No.31]

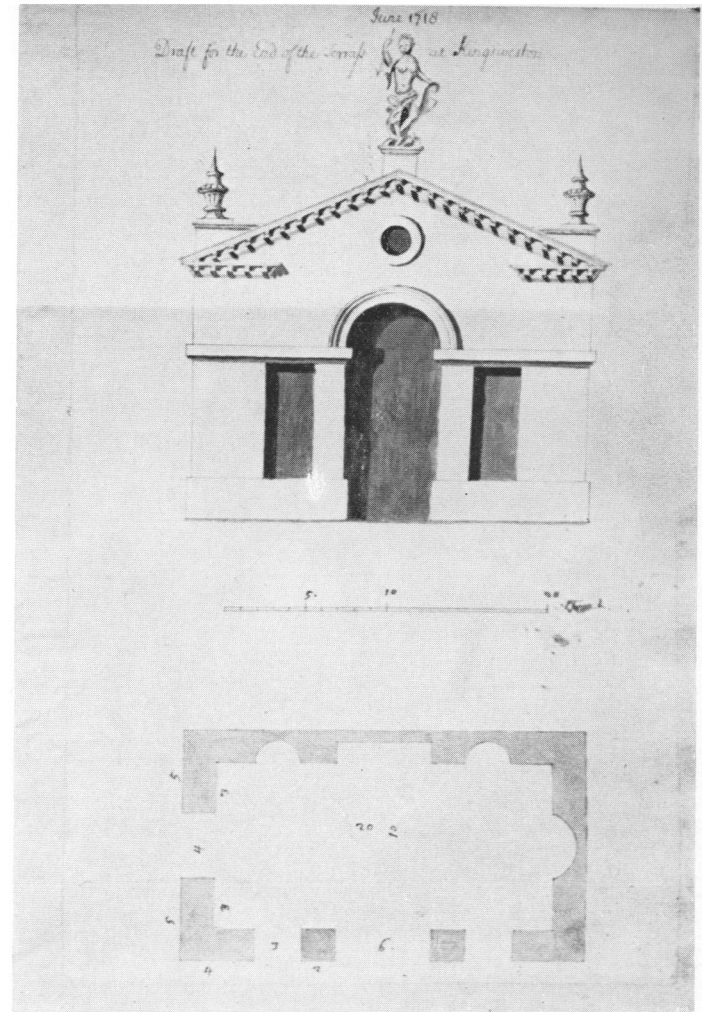


Fig.26 Design for the loggia north-west of Kings Weston [30]

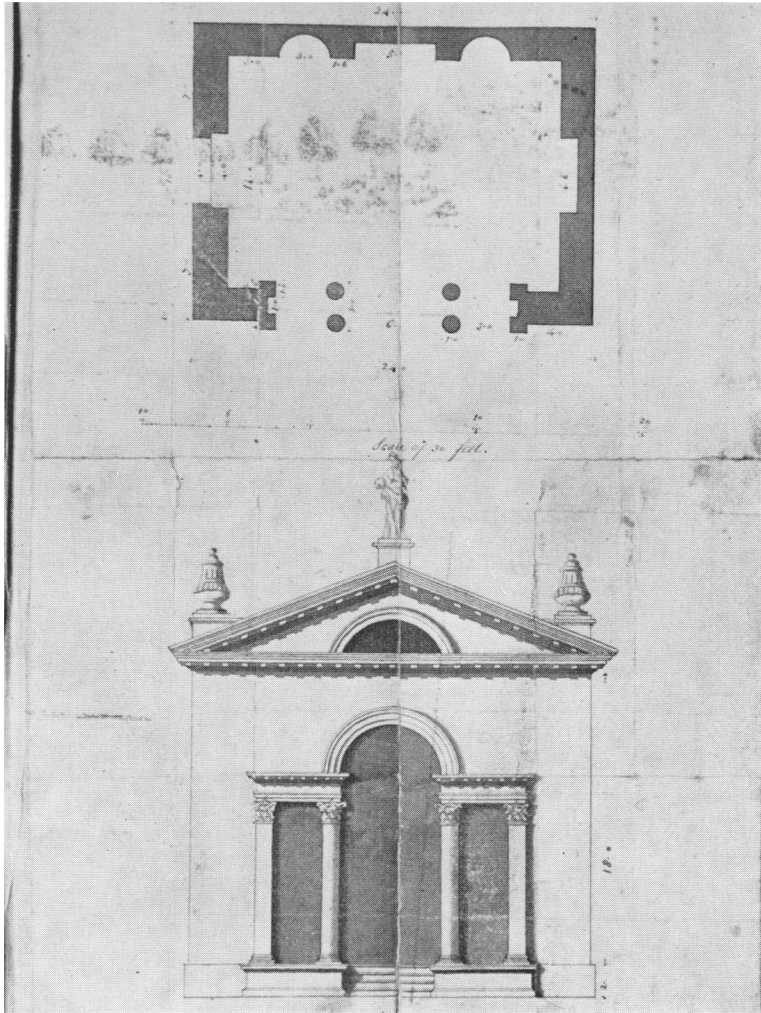


Fig.27 Design for the loggia north-west of Kings Weston [53]

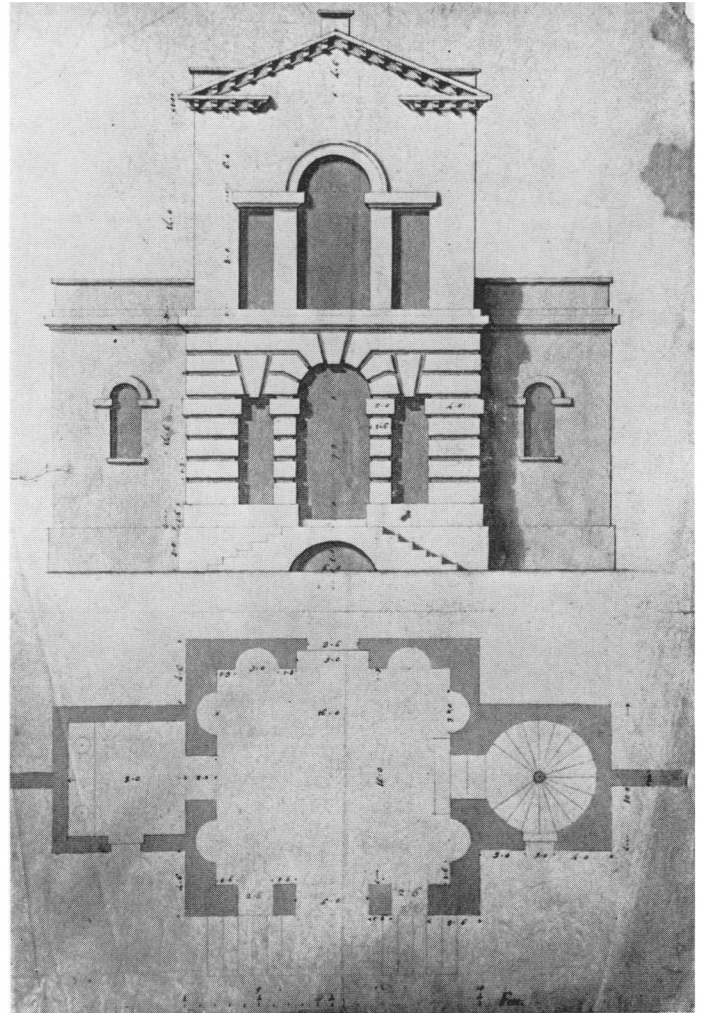


Fig.28 Design by Vanbrugh for Penpole Gate [Elton Hall, No. 193]

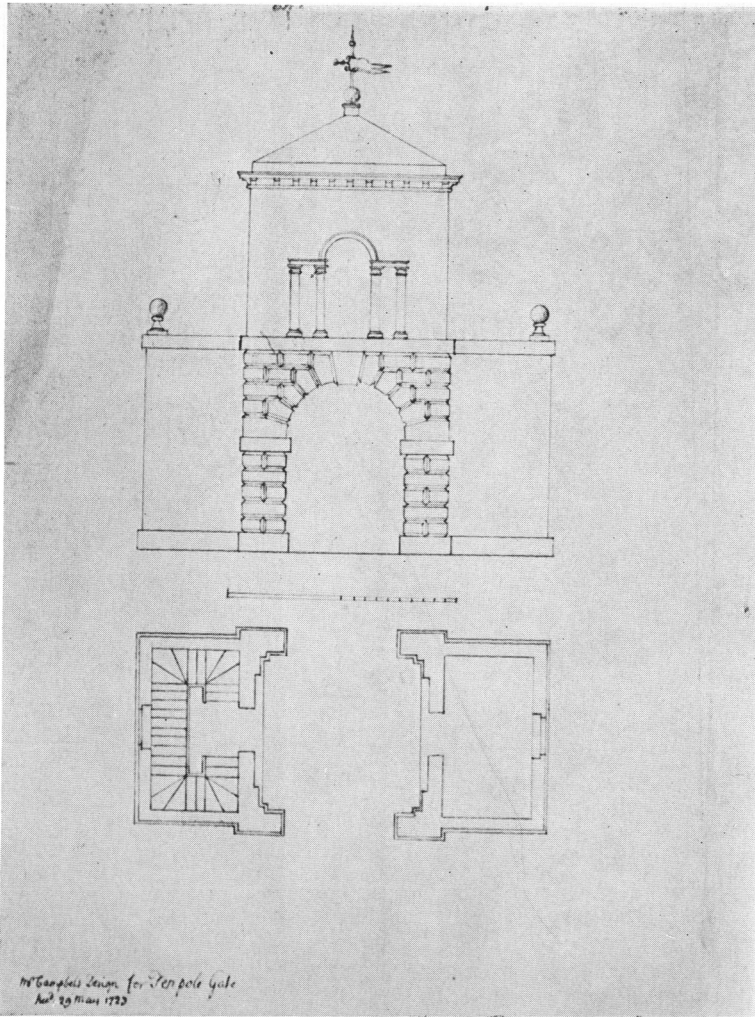


Fig. 29 'Mr Campbell's Design for Penpole Gate', 1723 [37]

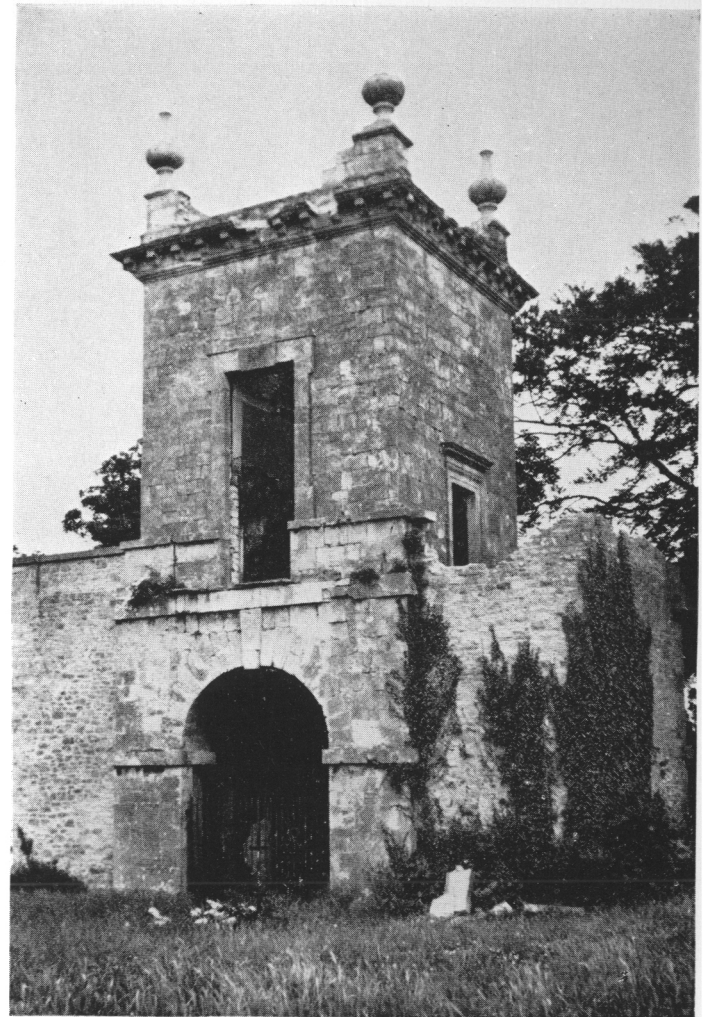


Fig. 30 Penpole Gate (demolished)

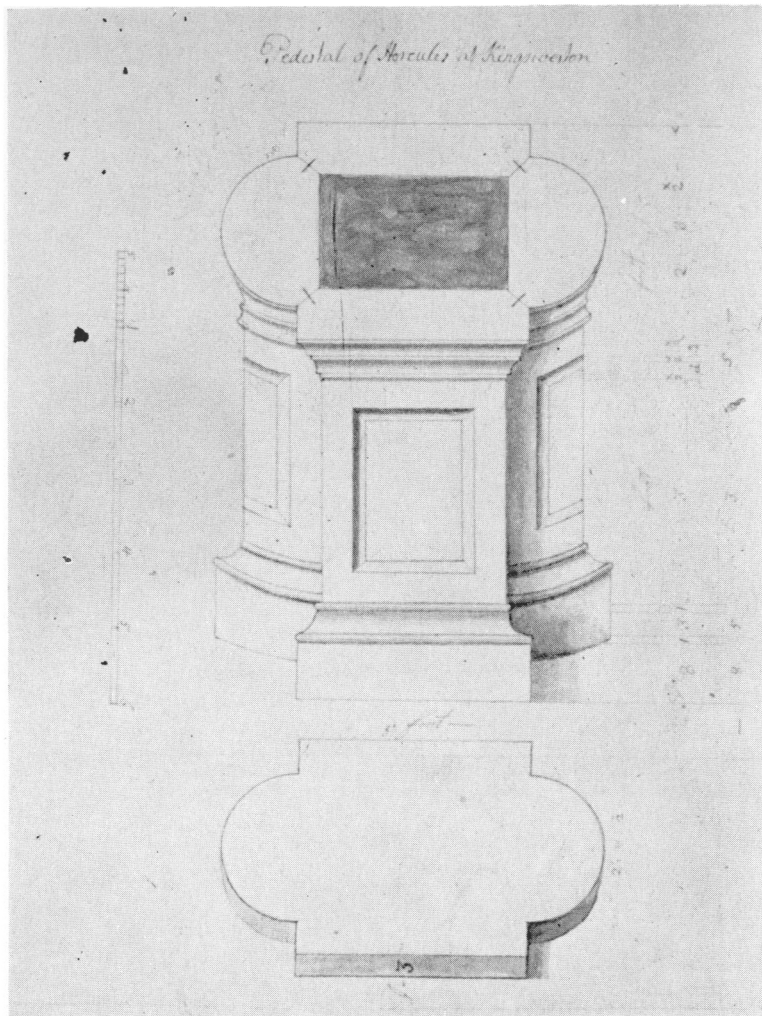


Fig. 31 'Pedestal of Hercules at Kingsweston' [22]

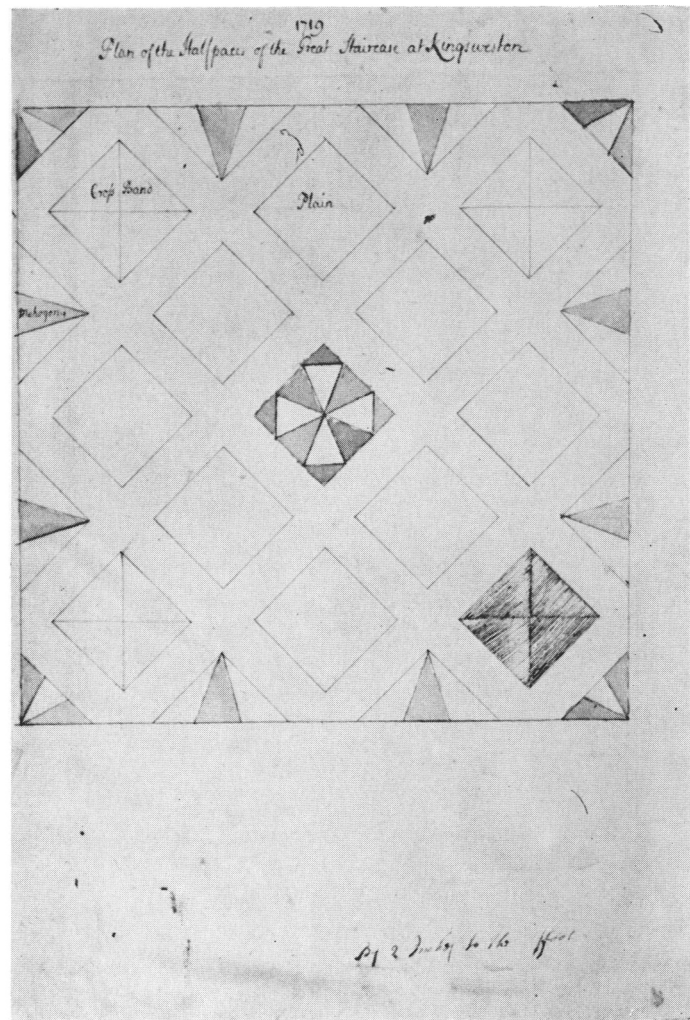


Fig. 32 'Plan of the Halfpaces of the Great Staircase at Kingsweston', 1719 [3]

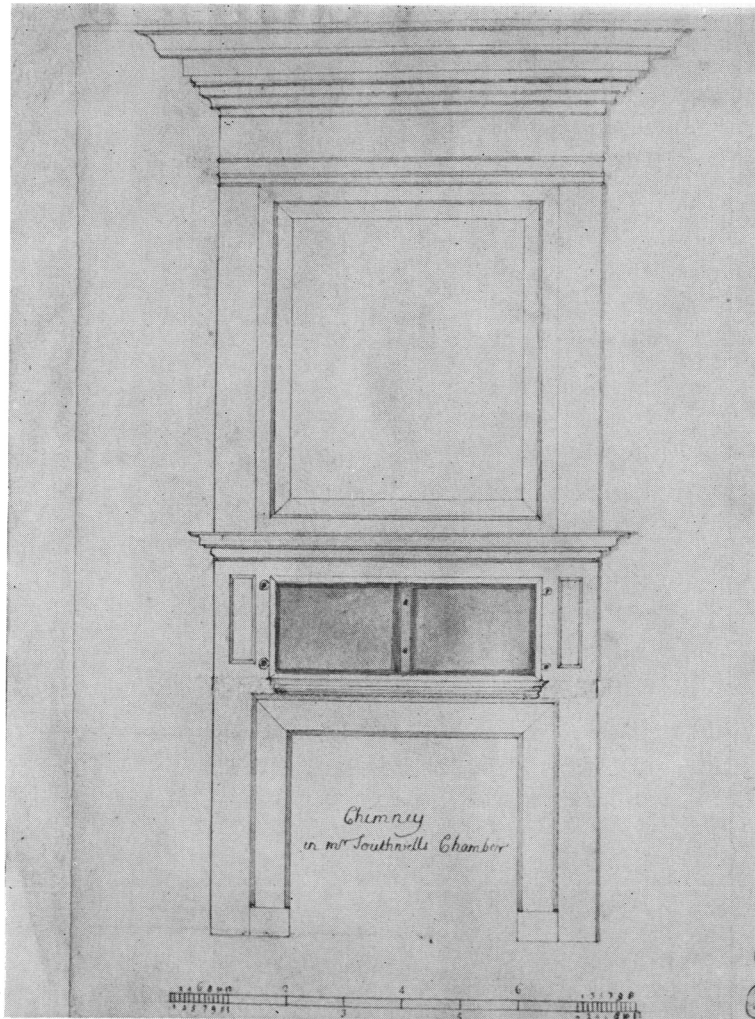


Fig. 33 'Chimney in Mr Southwells Chamber' [27]

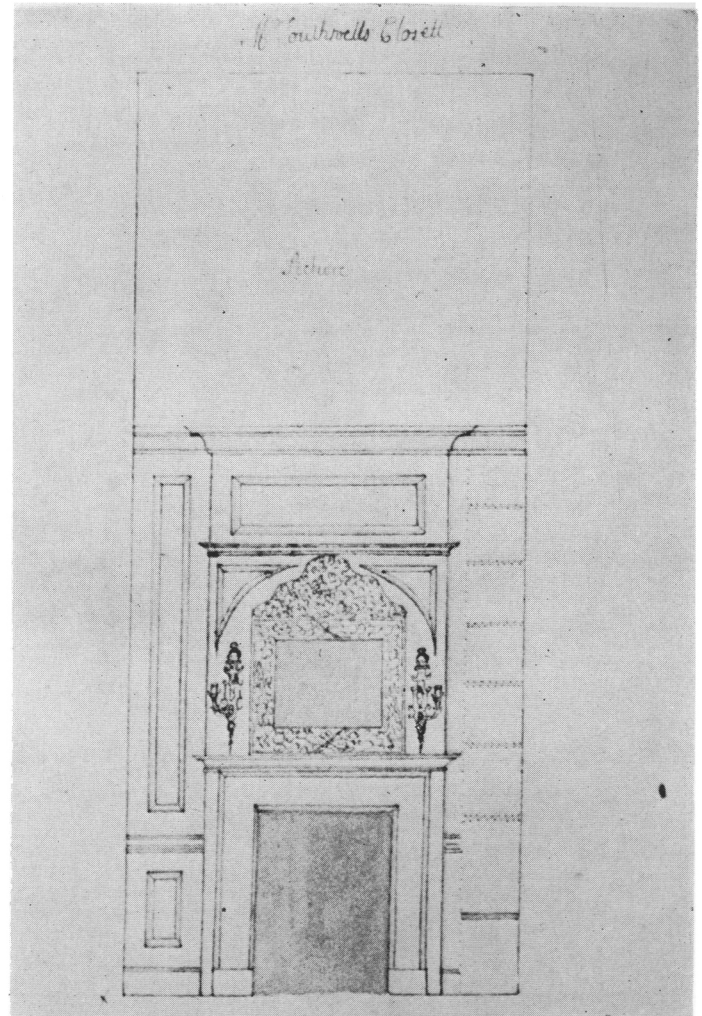


Fig. 34 Chimney-piece for 'Mr Southwells Closett' [55]

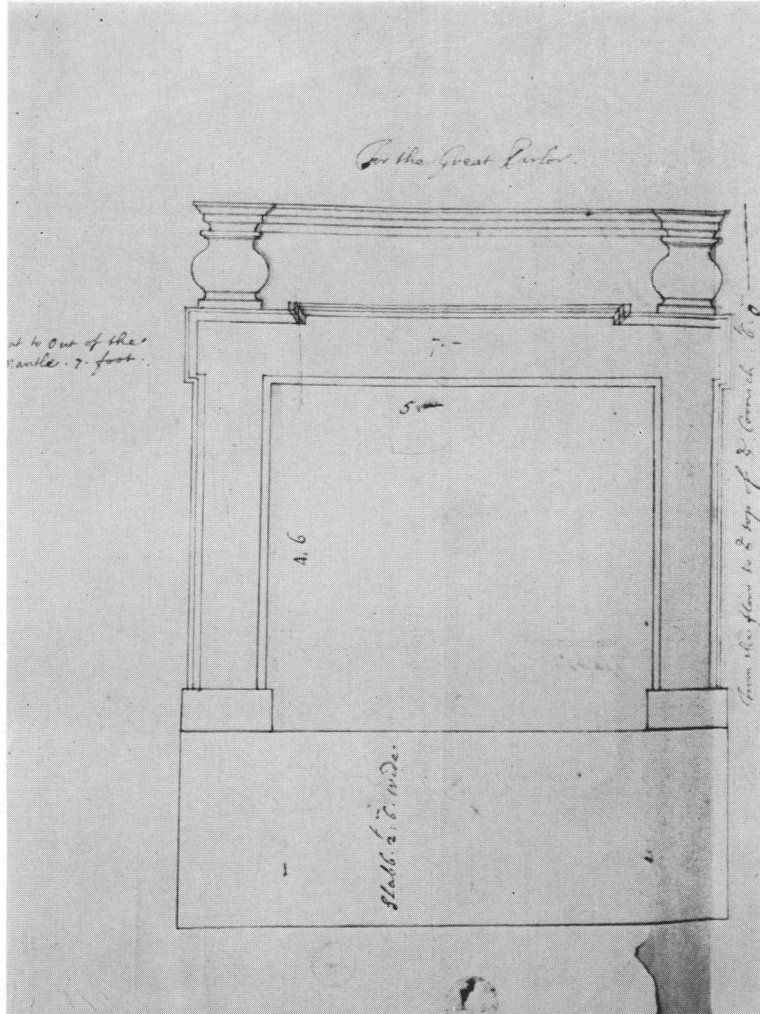


Fig. 35 Design for the Great Parlour chimney-piece at Kings Weston [130]

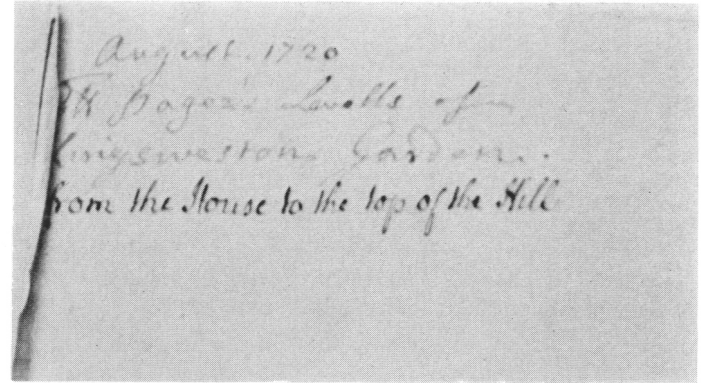


Fig. 36 Endorsement to No. 43, showing the hands of the Compiler and (?) Edward Southwell

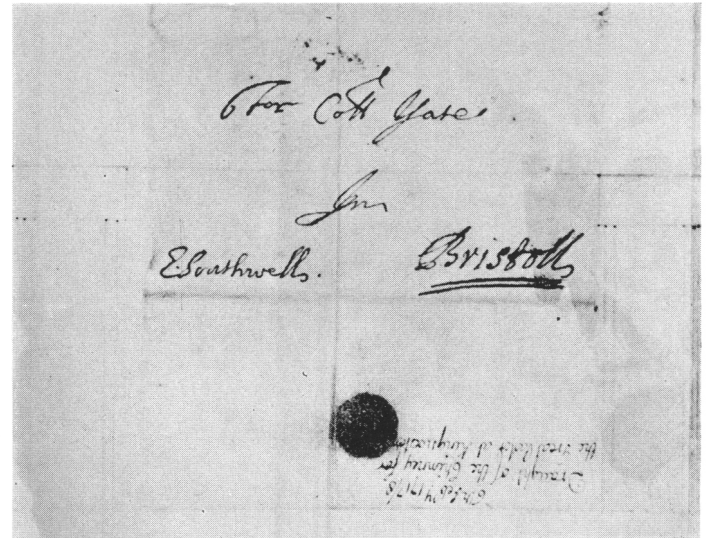


Fig. 37 Endorsement to No. 130 (Fig. 35)

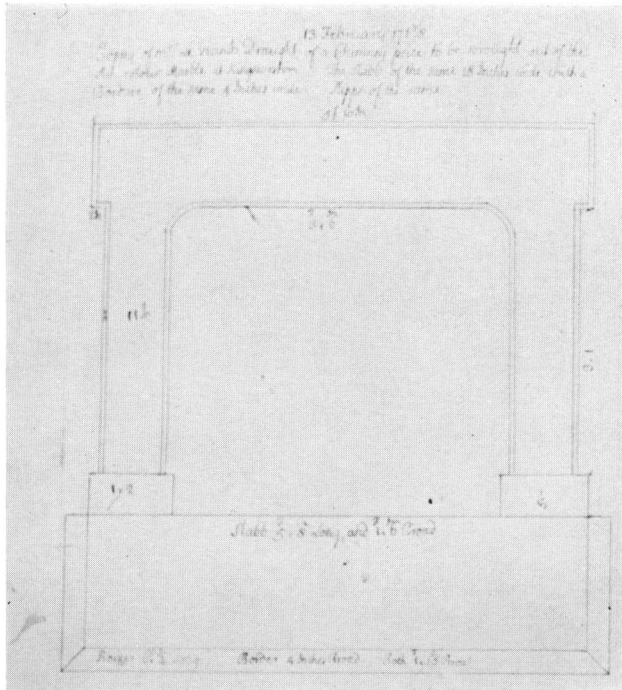


Fig. 38 Design for chimney-piece at Kings Weston [12]

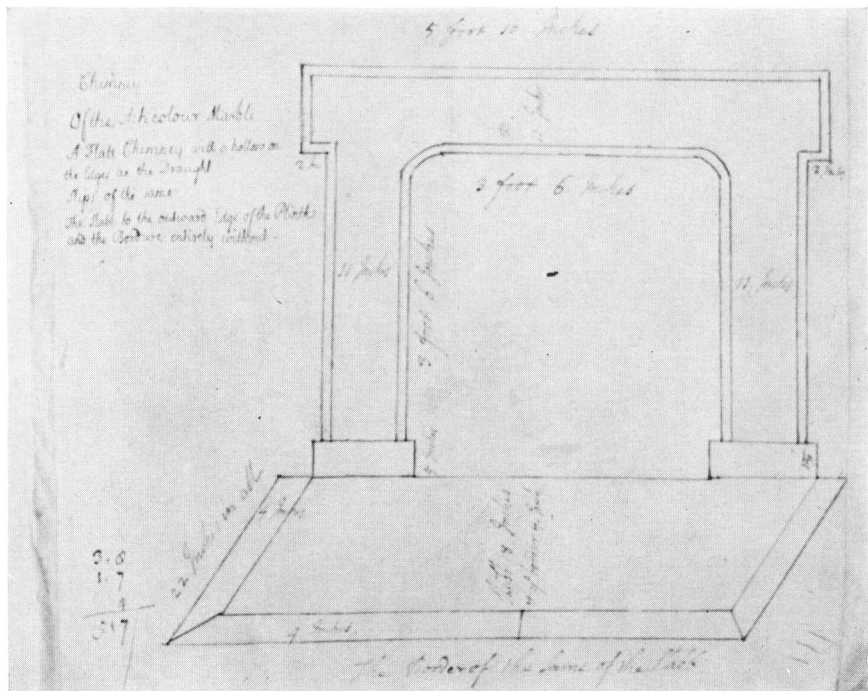


Fig. 39 Design for chimney-piece at Kings Weston [13]

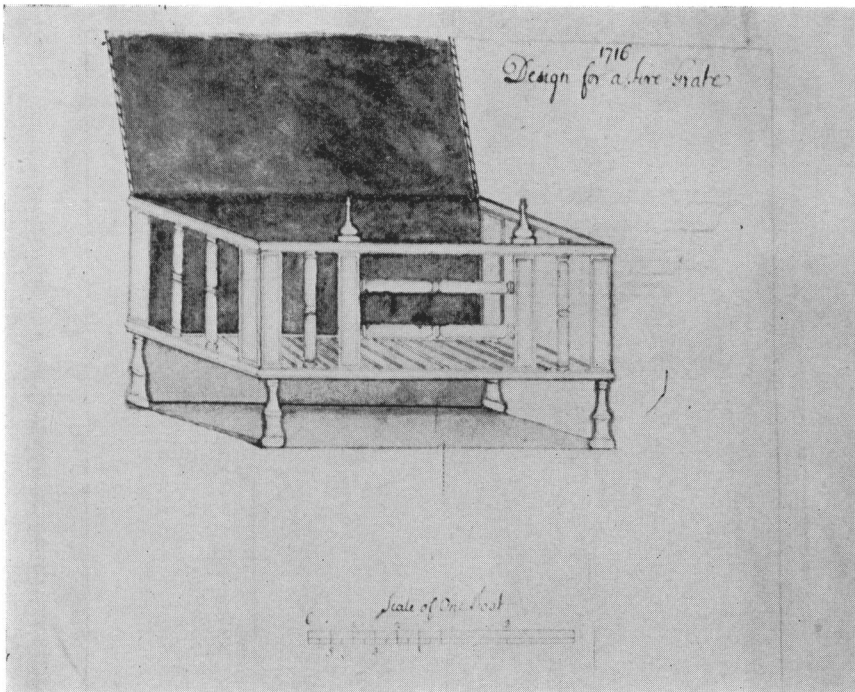


Fig. 40 'Design for a fire-grate', 1716 [28]

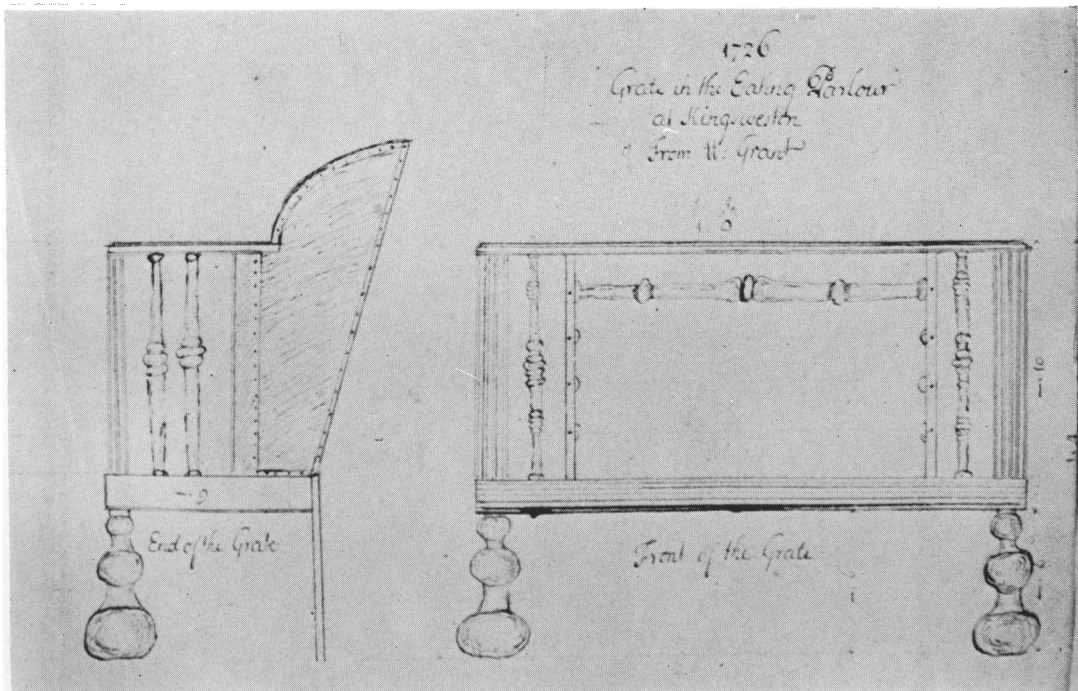


Fig. 41 'Grate in the Eating Parlour at Kingsweston', 1726 [29]

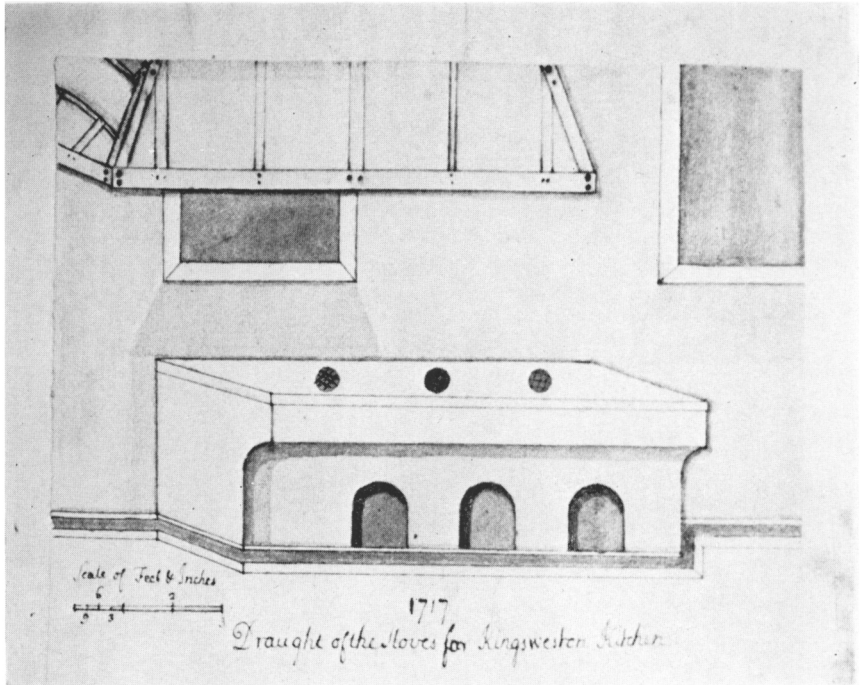


Fig. 42 'Draught of the Stoves for Kingsweston Kitchen', 1717 [39]

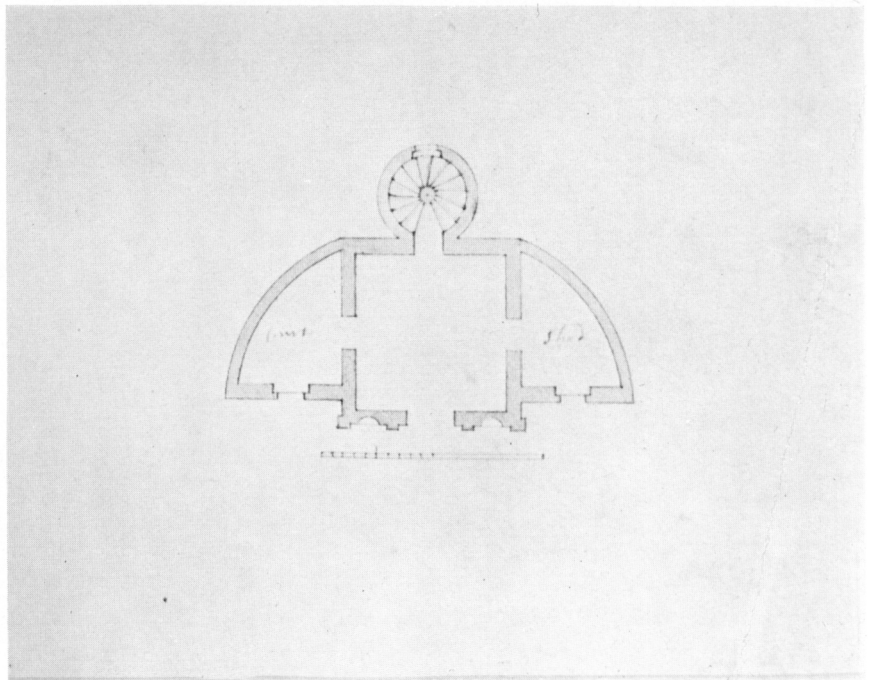


Fig. 43 Plan of a garden building [40]

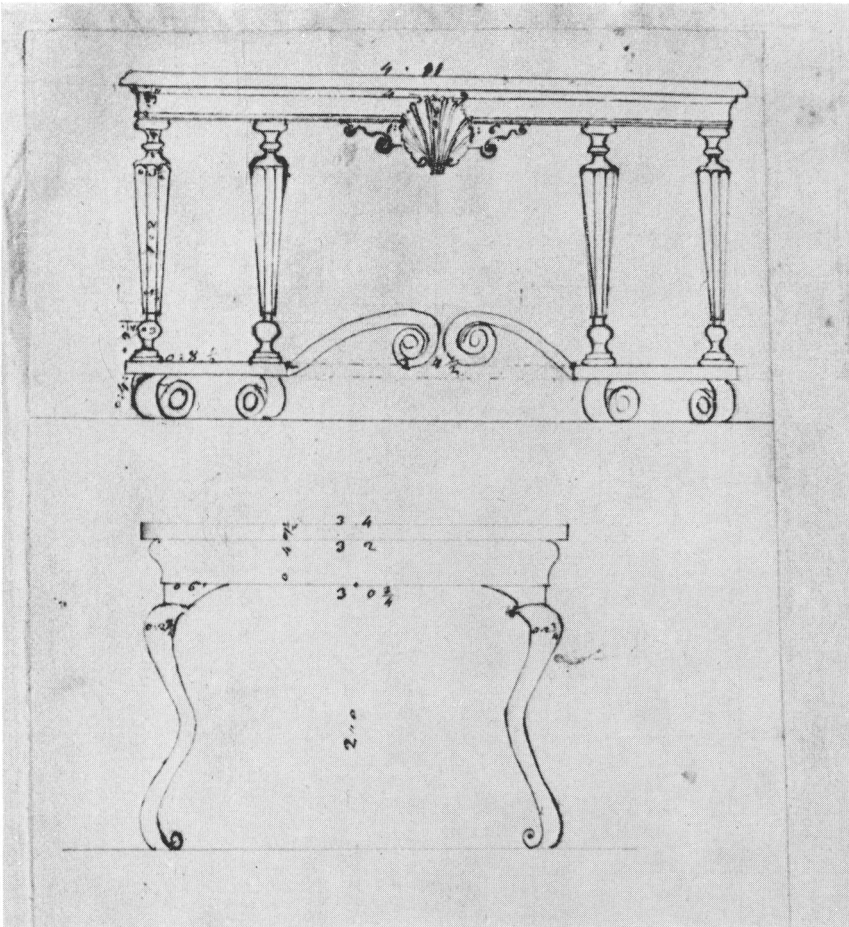


Fig. 44 Elevations of two tables [75]

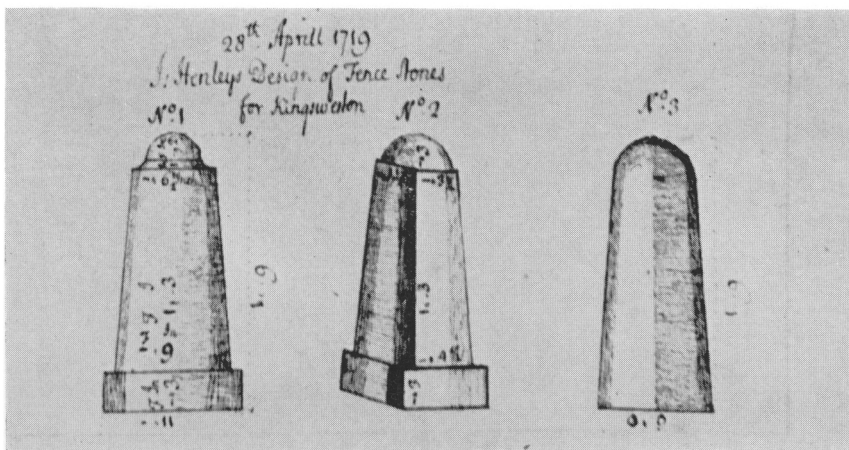


Fig. 45 'J. Henleys Design of Fence Stones for Kingsweston', 1719 [76]

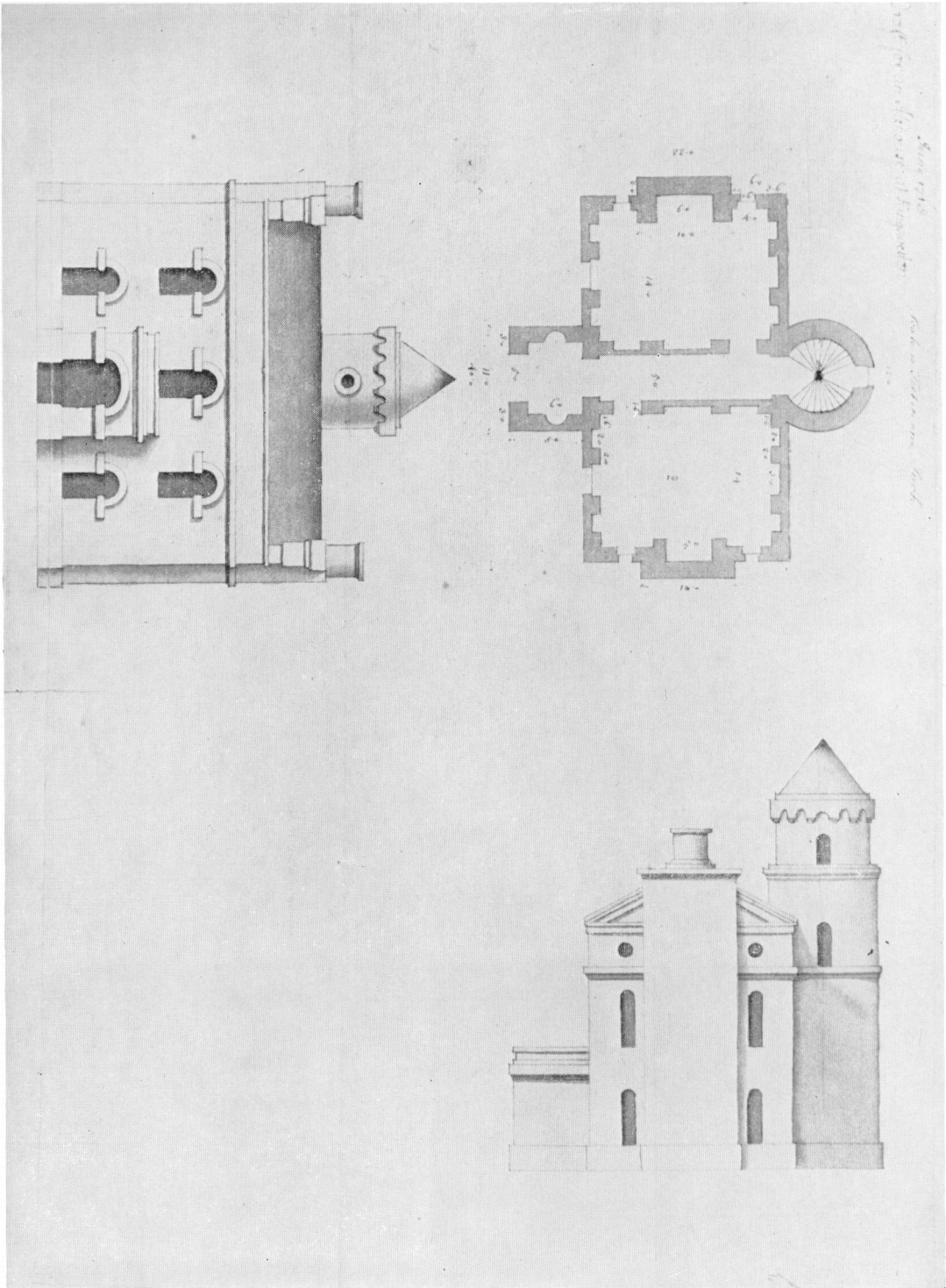


Fig. 46 *Plan and elevations for an alehouse at Kings Weston, 1718* [32]

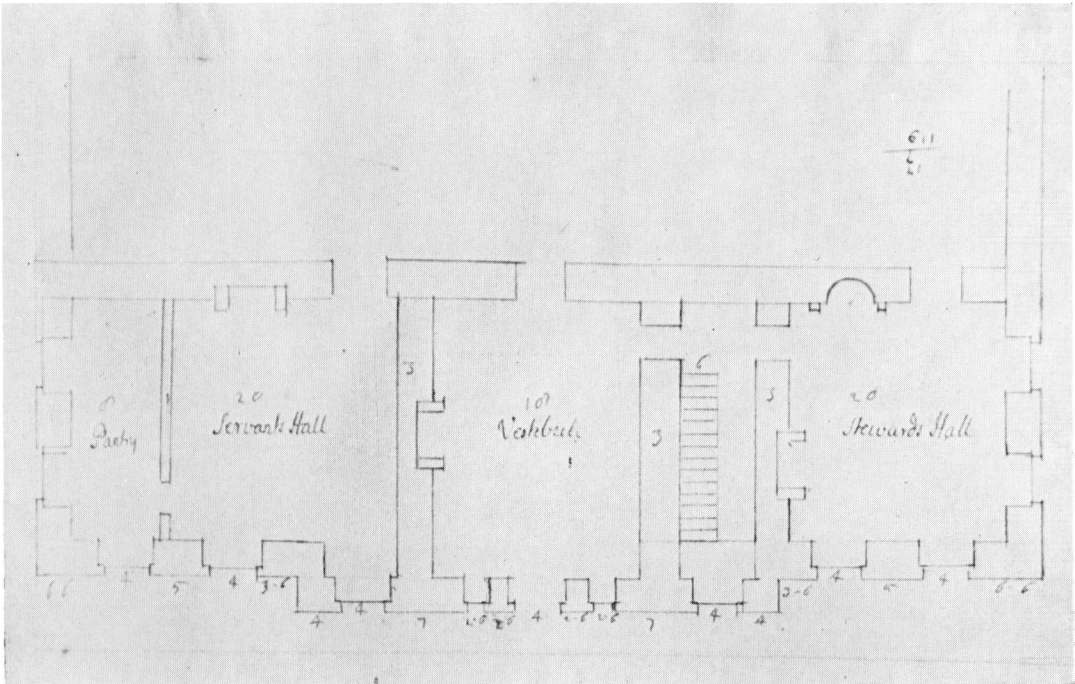


Fig.47 Plan of west basement range, Kings Weston [78]

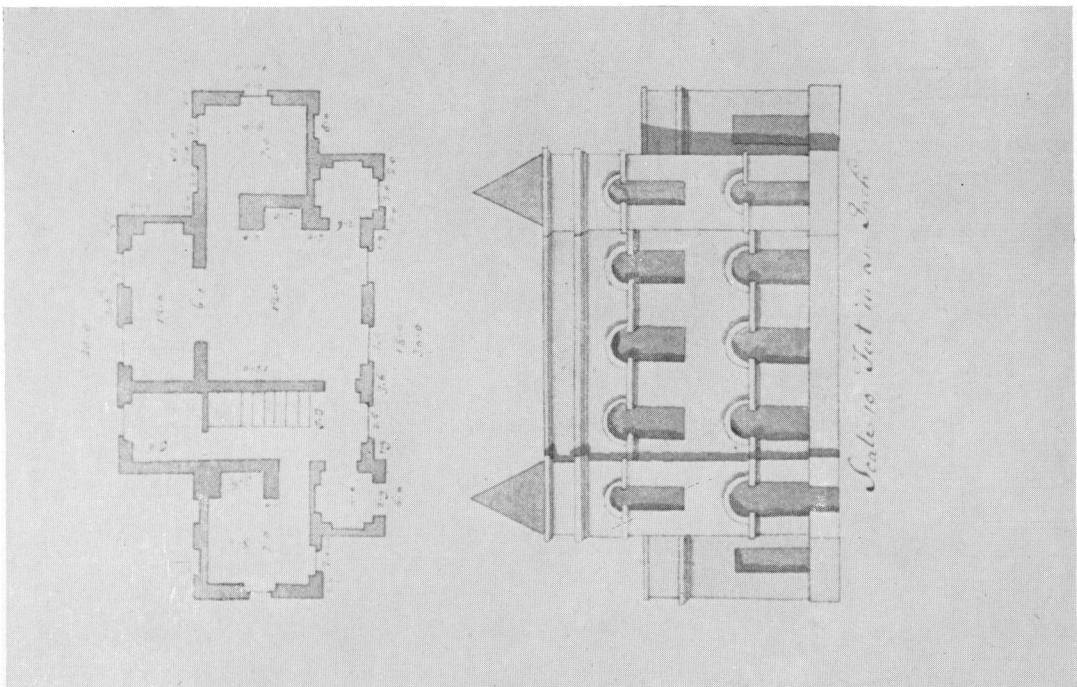
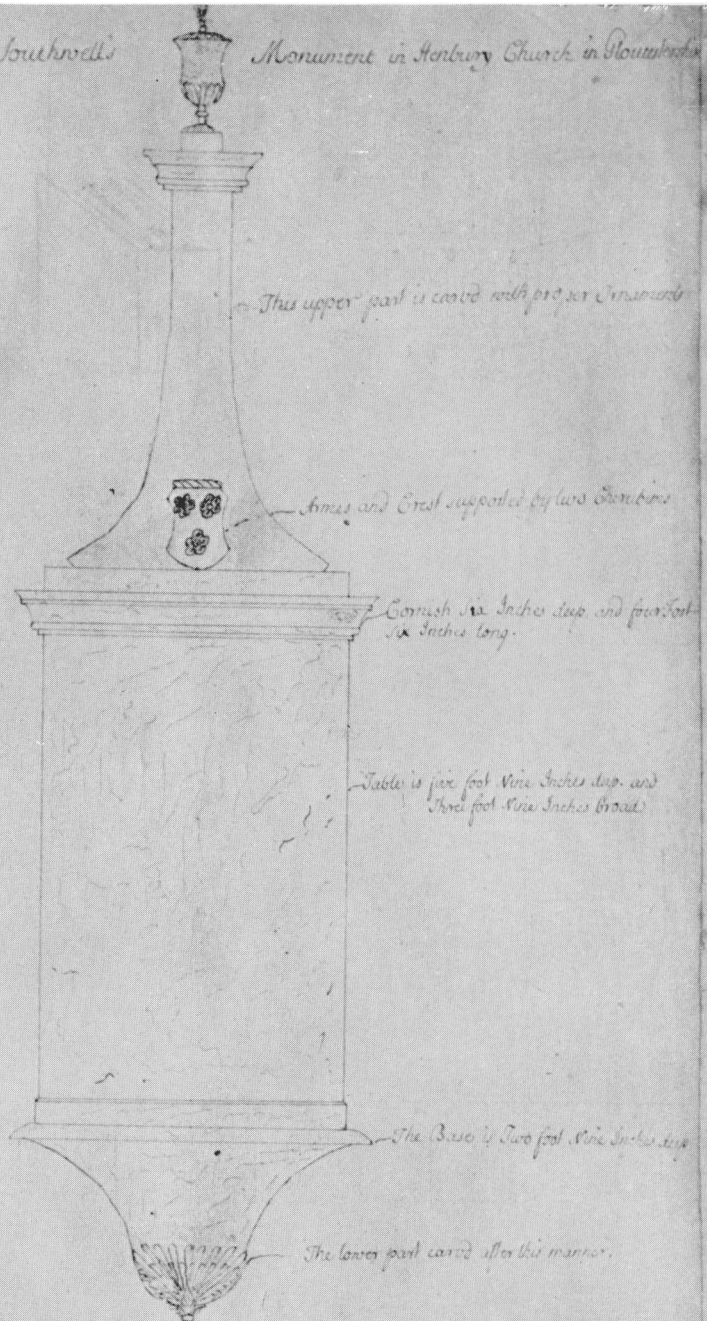


Fig.48 Plan and elevation of a small house [79]

Draught of Sr Robert Southwell's

Monument in Henbury Church in Gloucestershire



*This Monument was designed by Mr Henry Heery, and wrought by Mr Gibbons
The Marble Workmanship Carriage into the Country Setting up, and a Guinea
to the Workman that went downe with it to Henbury cost £ 62. 18. —*

Fig. 49 'Draught of Sr Robert Southwell's Monument in Henbury Church' [72]

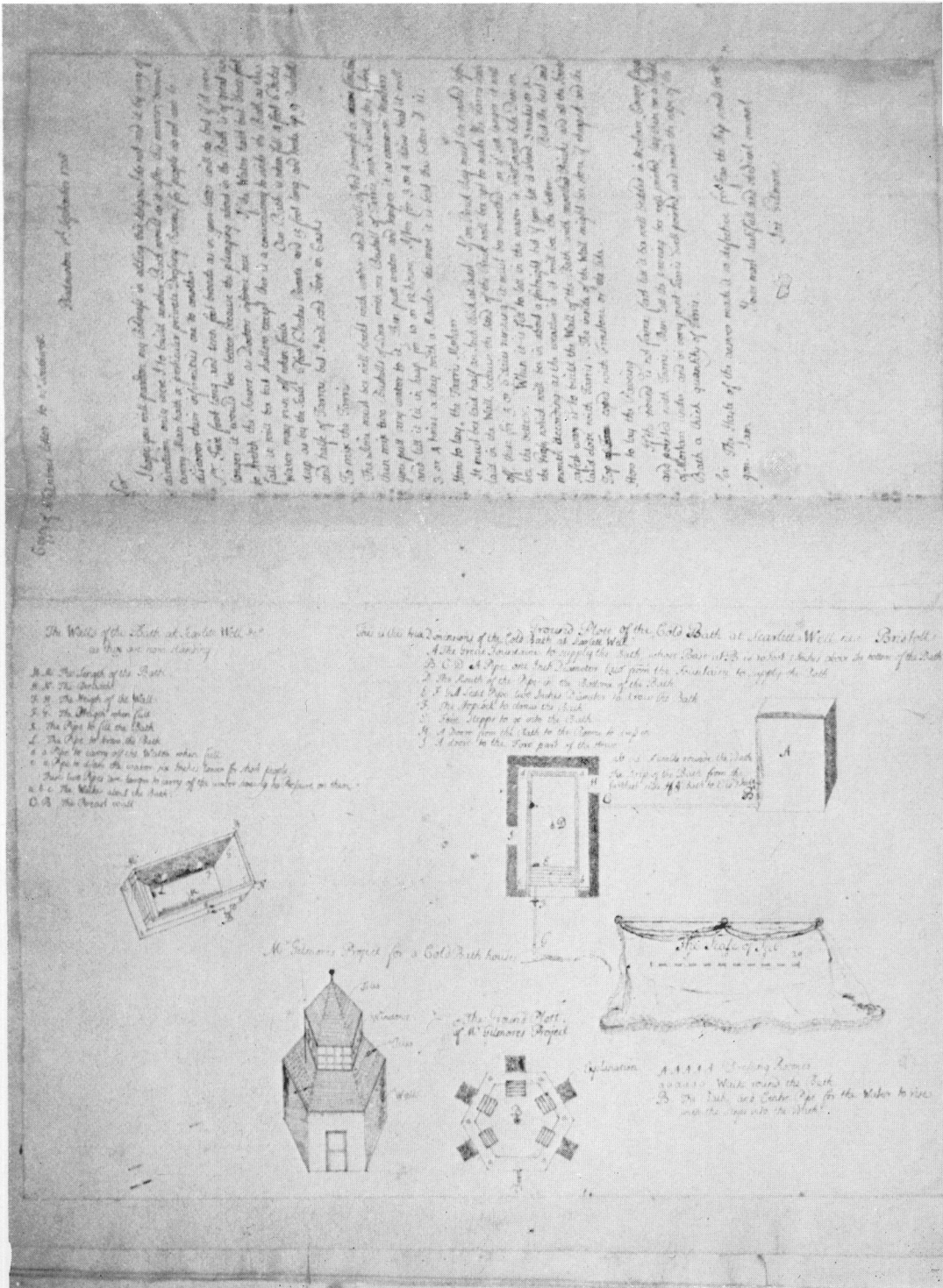


Fig. 50 Cold bath at Scarlet Well, with Mr Gilmore's project for a covered bath, 1708 [86]

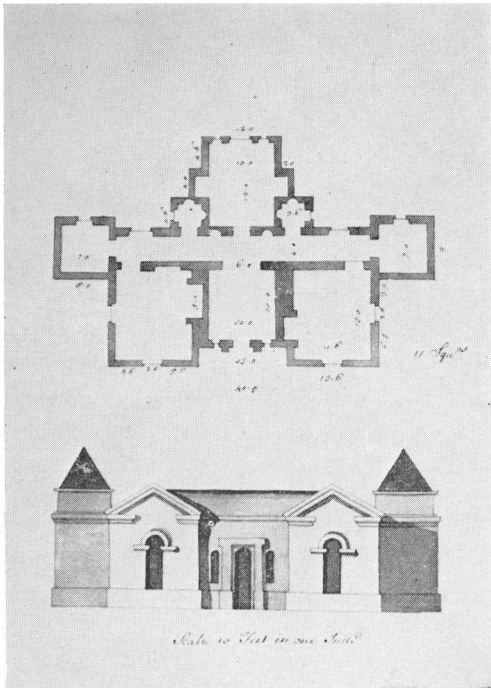


Fig. 51 *Plan and elevation of a small one-storey house* [101]

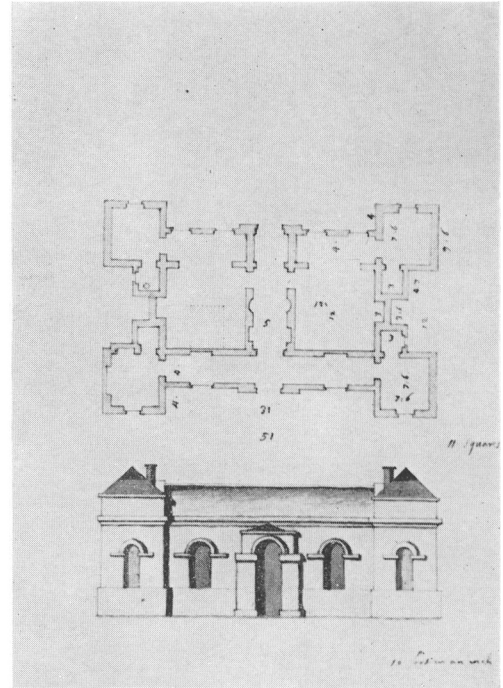


Fig. 52 *Plan and elevation of a small one-storey house* [102]

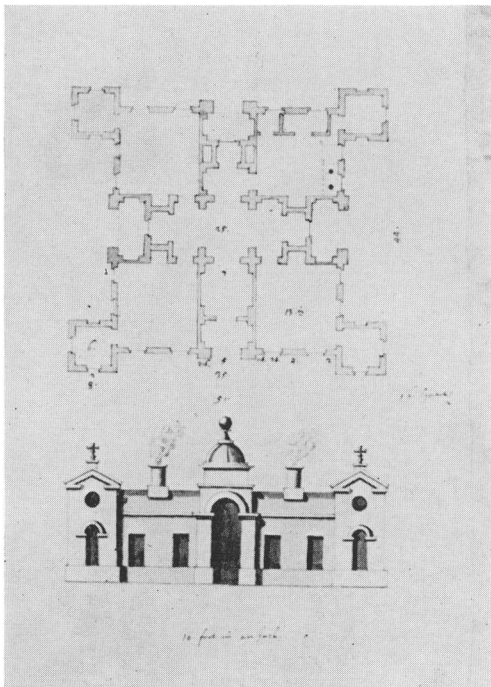


Fig. 53 *Plan and elevation of a one-storey house* [91]

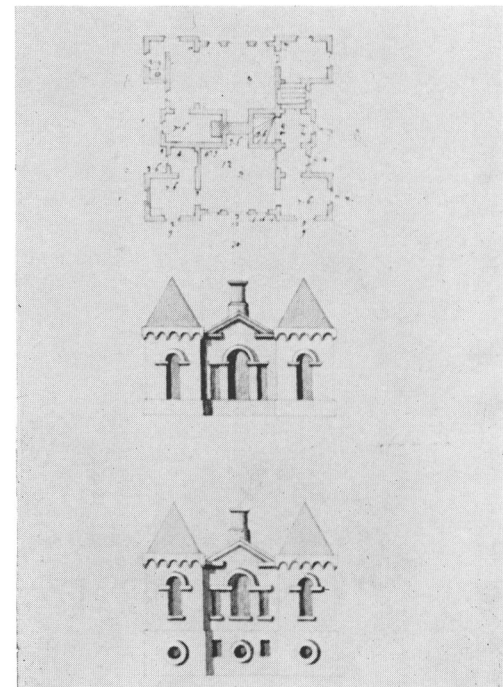


Fig. 54 *Plan and two elevations of a small house on rising ground* [92]

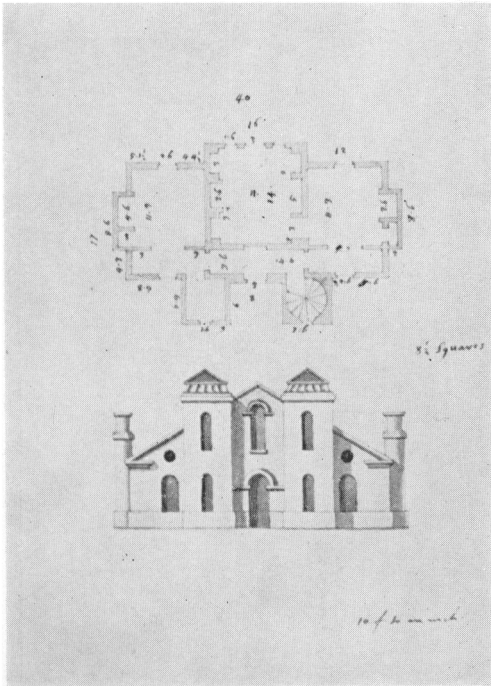


Fig.55 Plan and elevation of a small house [89]

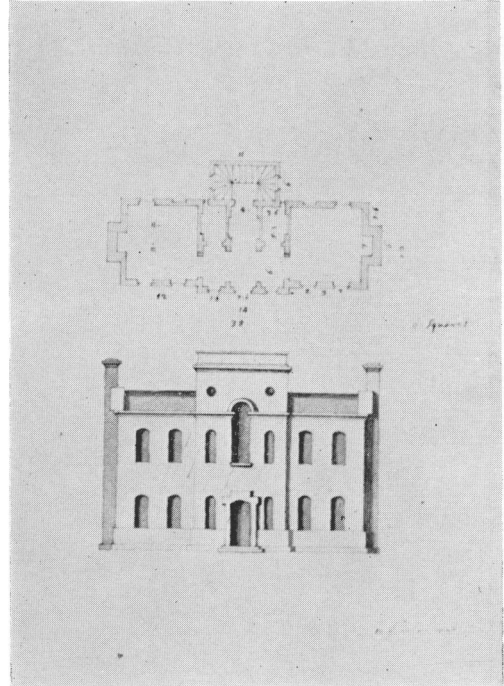


Fig.56 Plan and elevation of a small house [90]

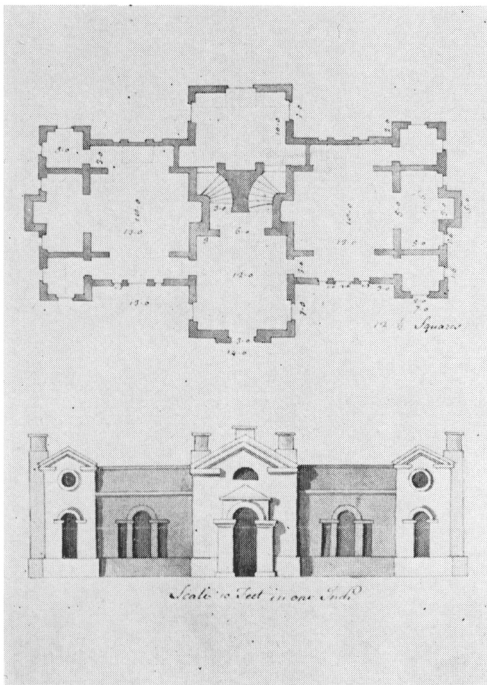


Fig.57 Plan and elevation of a one-storey house [46]

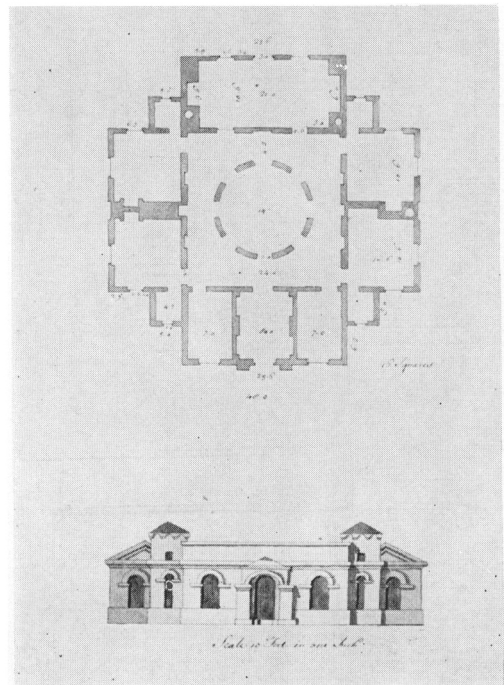


Fig.58 Plan and elevation of a one-storey house [11]

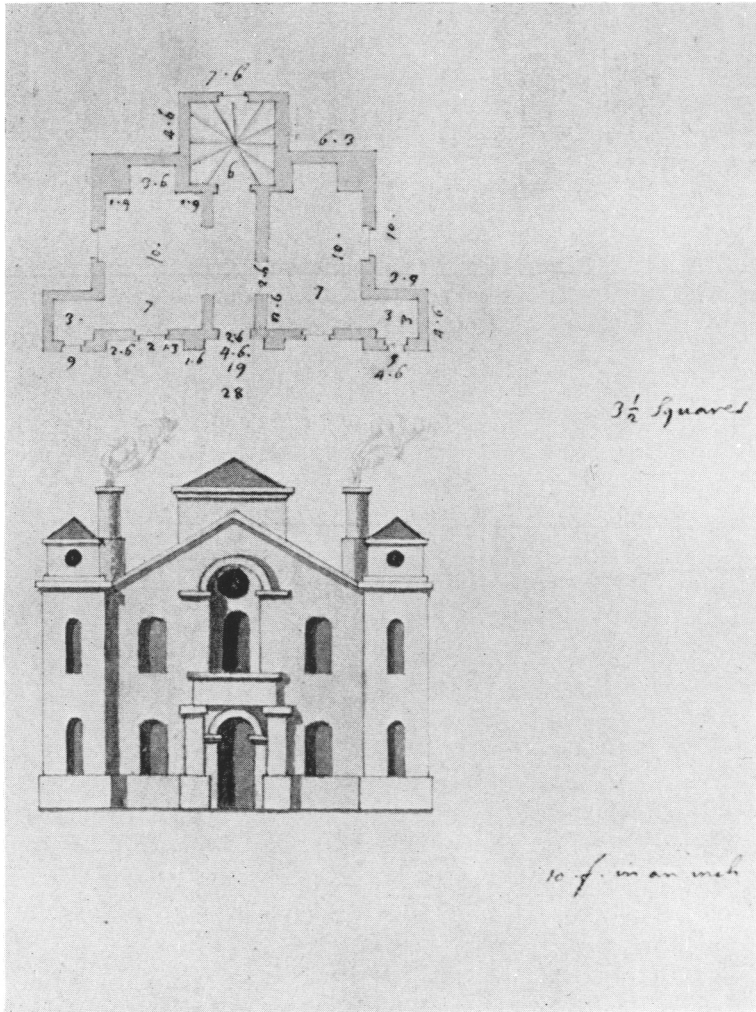


Fig.59 Plan and elevation of a small house [5]

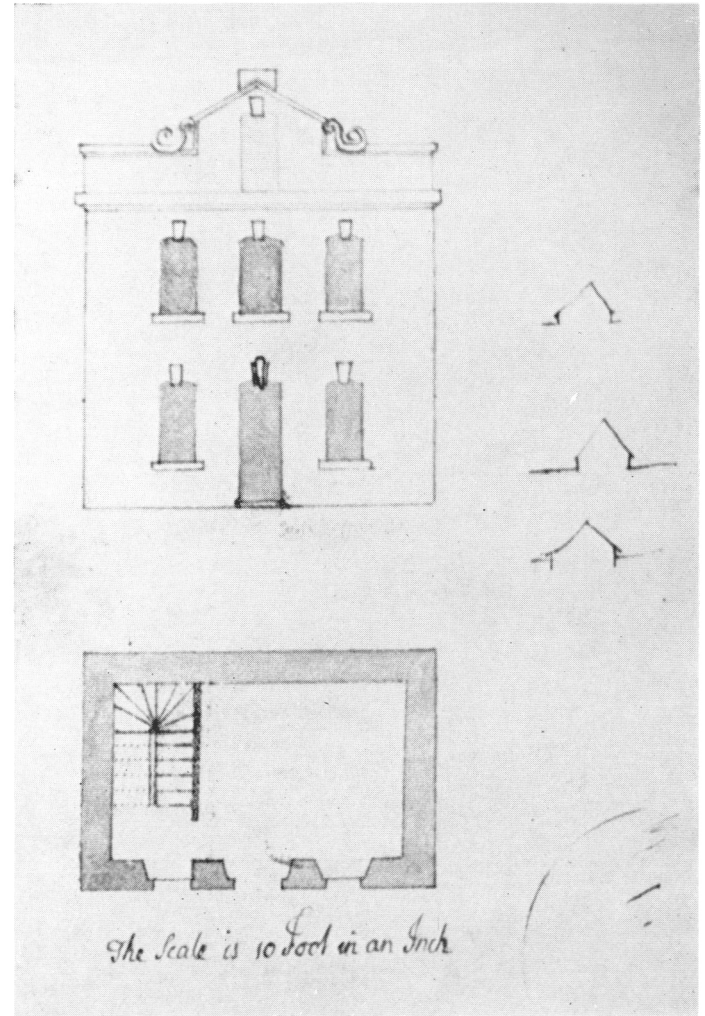


Fig.60 Plan and elevation of a cottage [74]

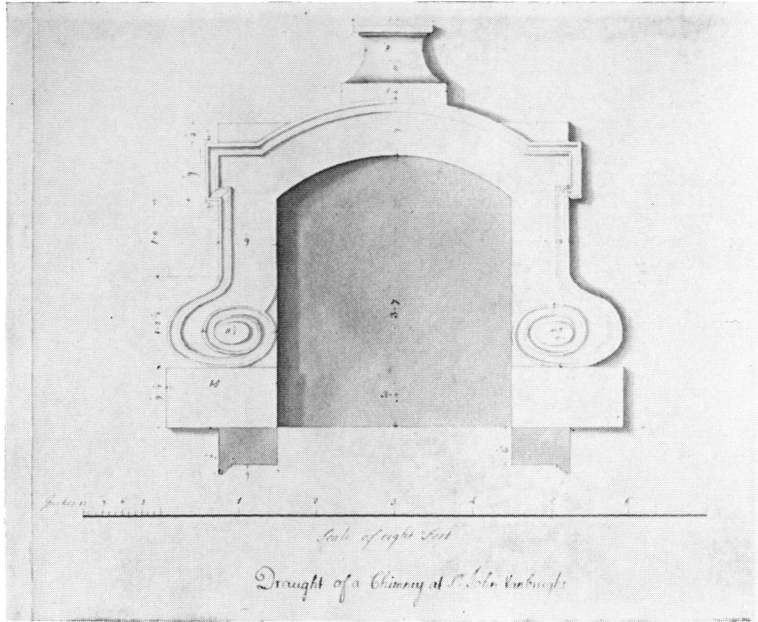


Fig. 61 Plan and elevation of a chimney at Vanbrugh Castle, Blackheath [73]

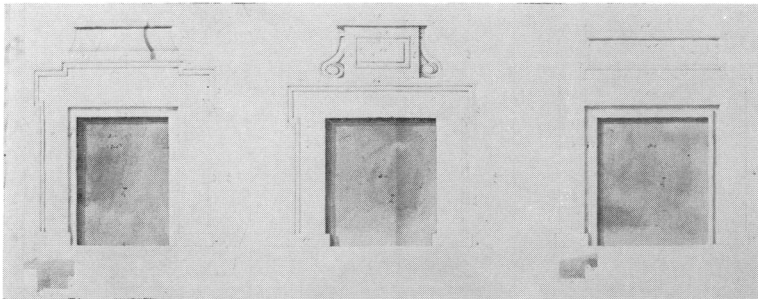


Fig. 63 Designs for three chimney-pieces [126]

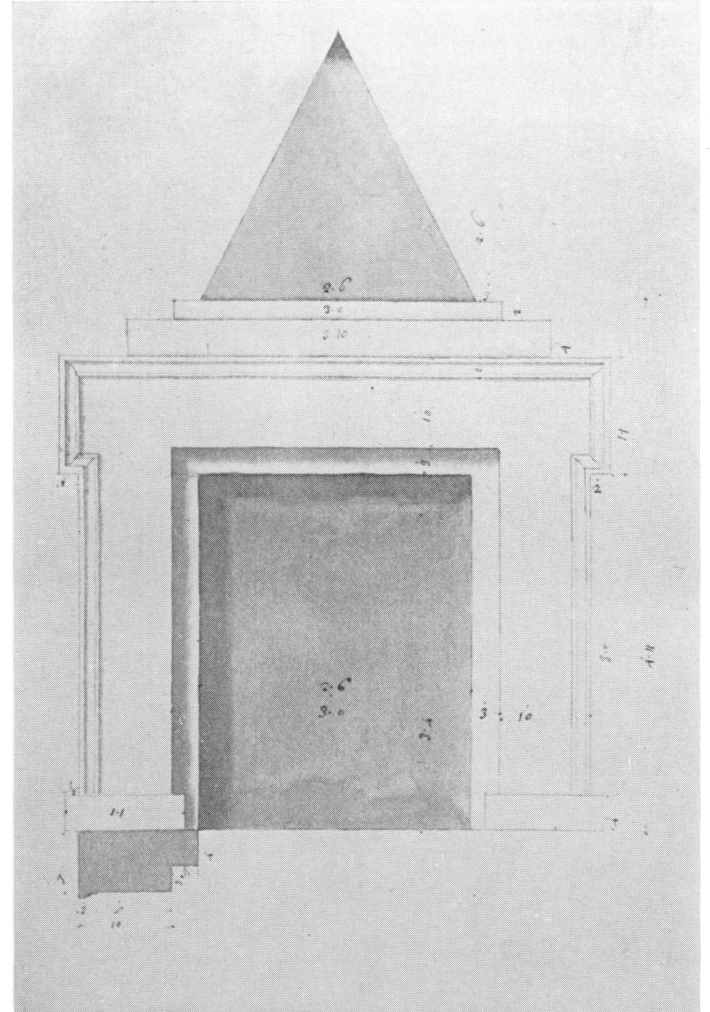


Fig. 62 Elevation and part plan of a chimney-piece [26]

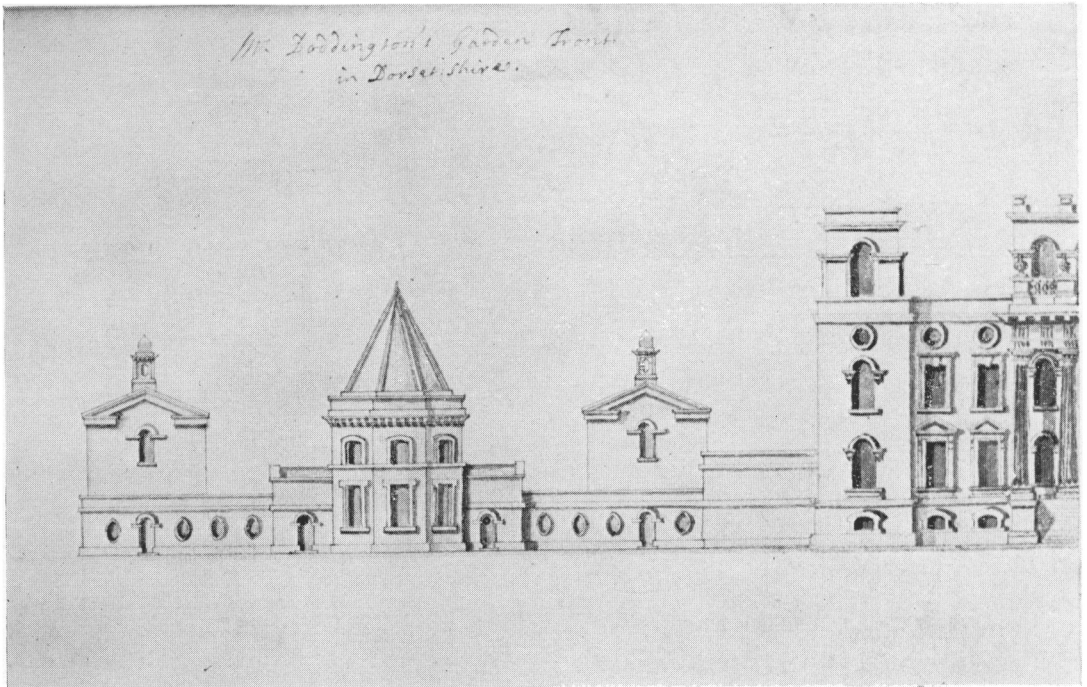


Fig. 64 Part elevation of garden front of Eastbury, Dorset [21]

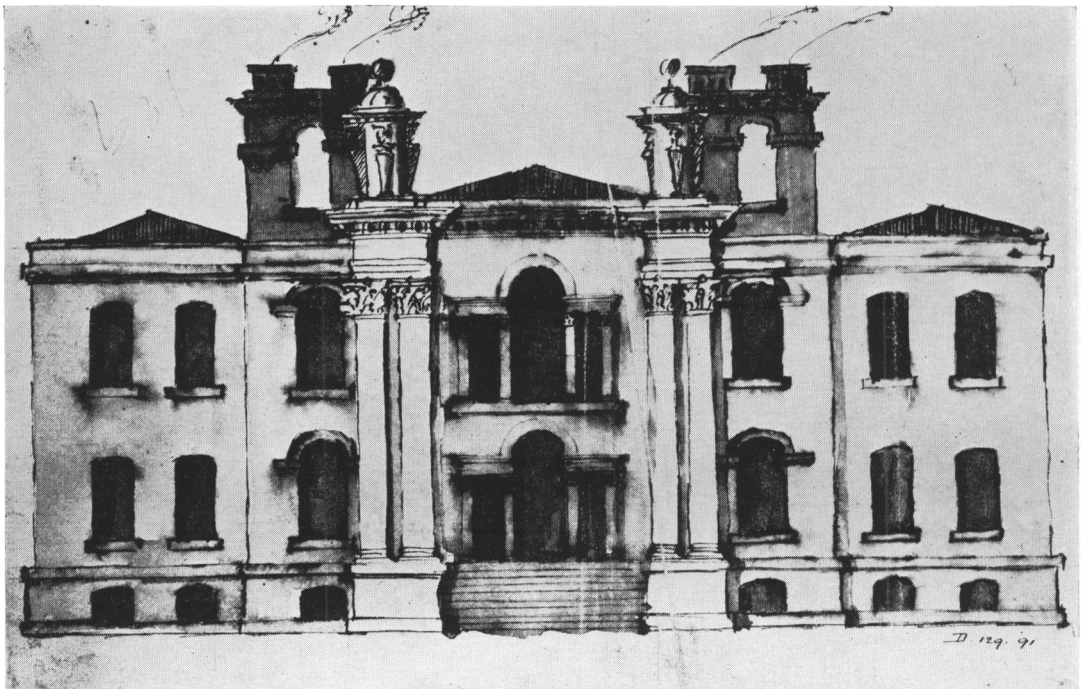


Fig. 65 Project by Vanbrugh for Eastbury [Victoria & Albert Museum]

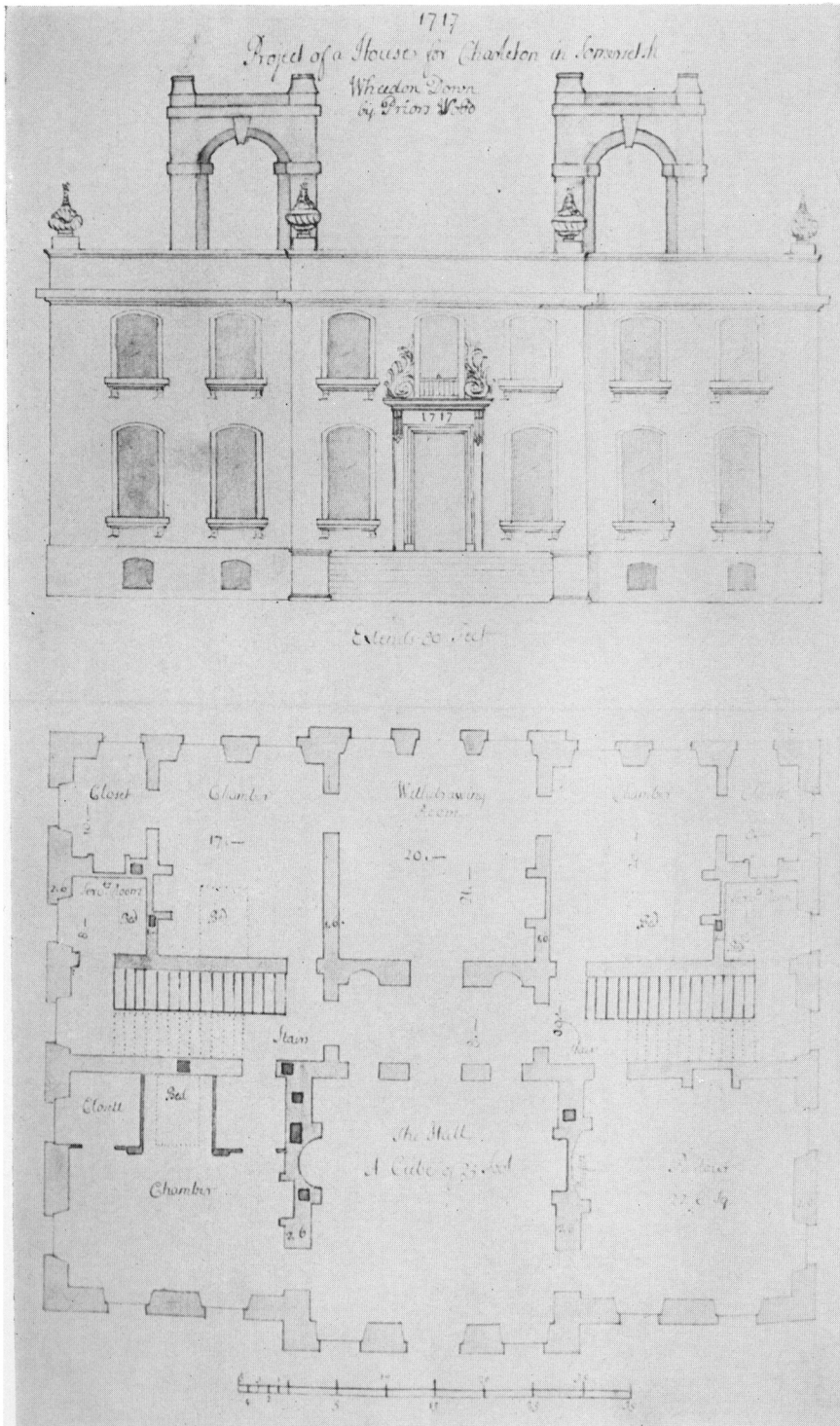


Fig.66 Plan and elevation for Charlton House, 1717 [64]

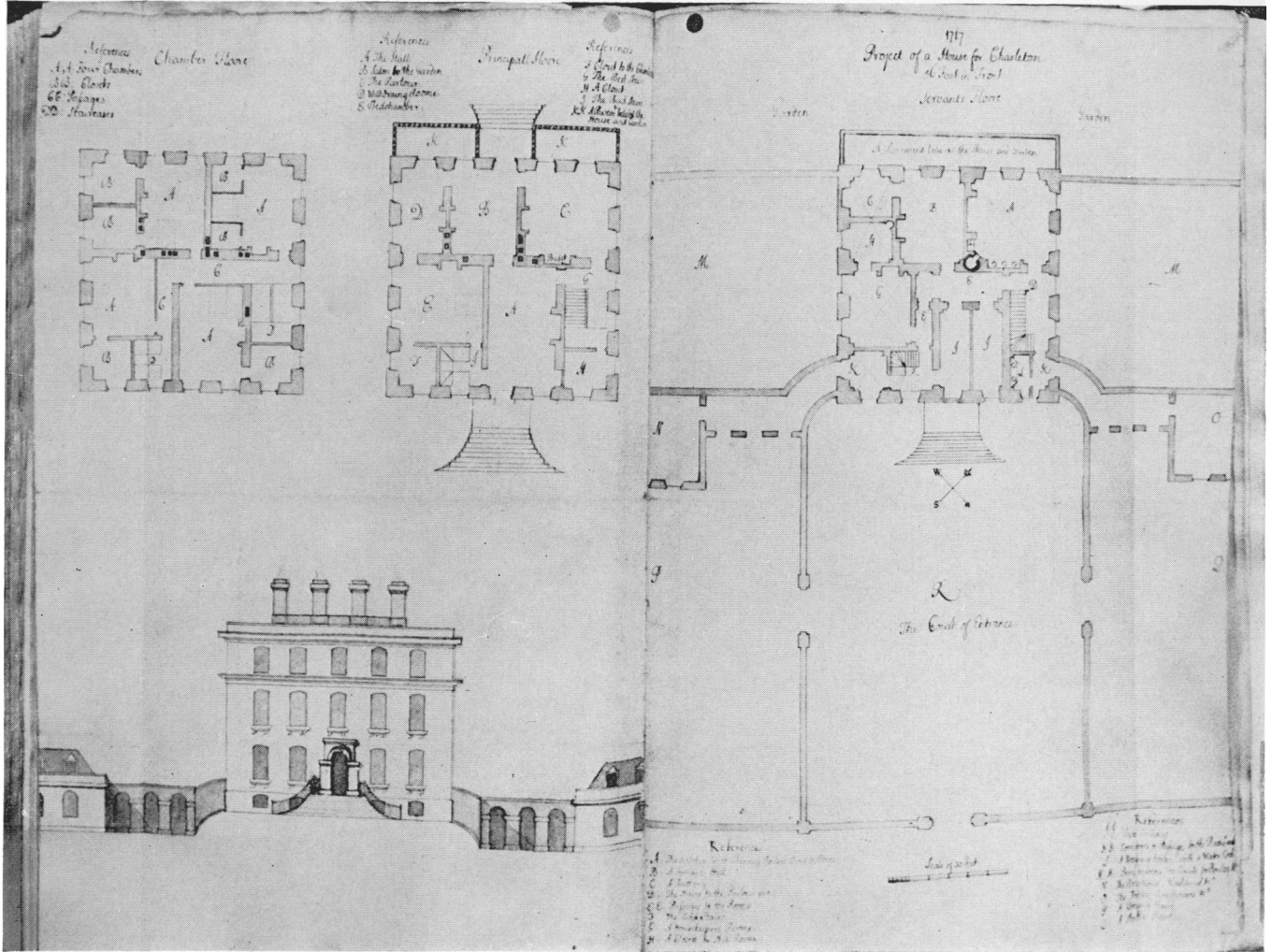


Fig. 67 'Project of a house for Charlton', 1717 [114]

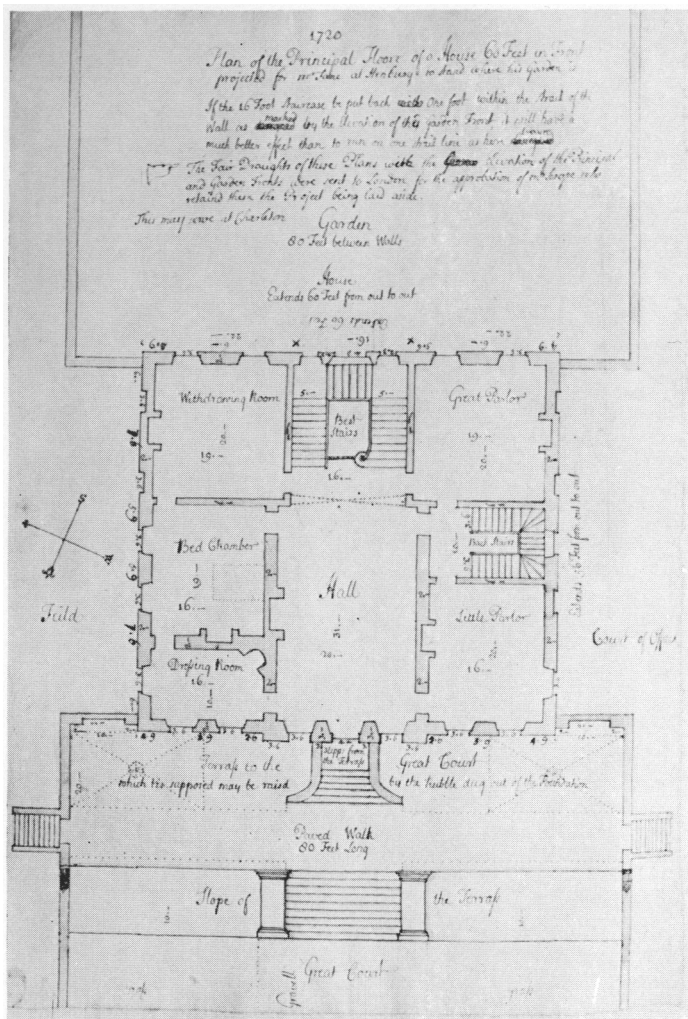


Fig.68 Plan of a house at Henbury for Mr Fane, 1720 [58]

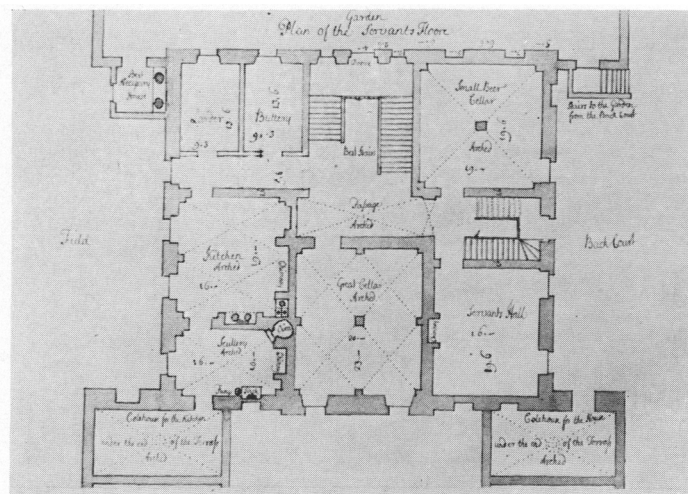


Fig.69 House at Henbury for Mr Fane, basement plan [63]

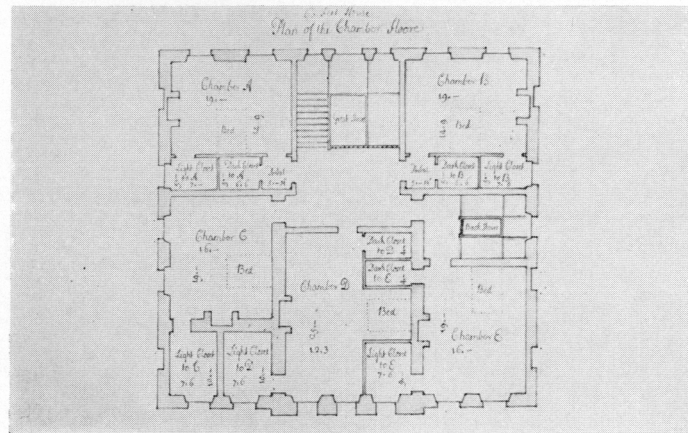


Fig.70 House at Henbury for Mr Fane, first floor plan [62]

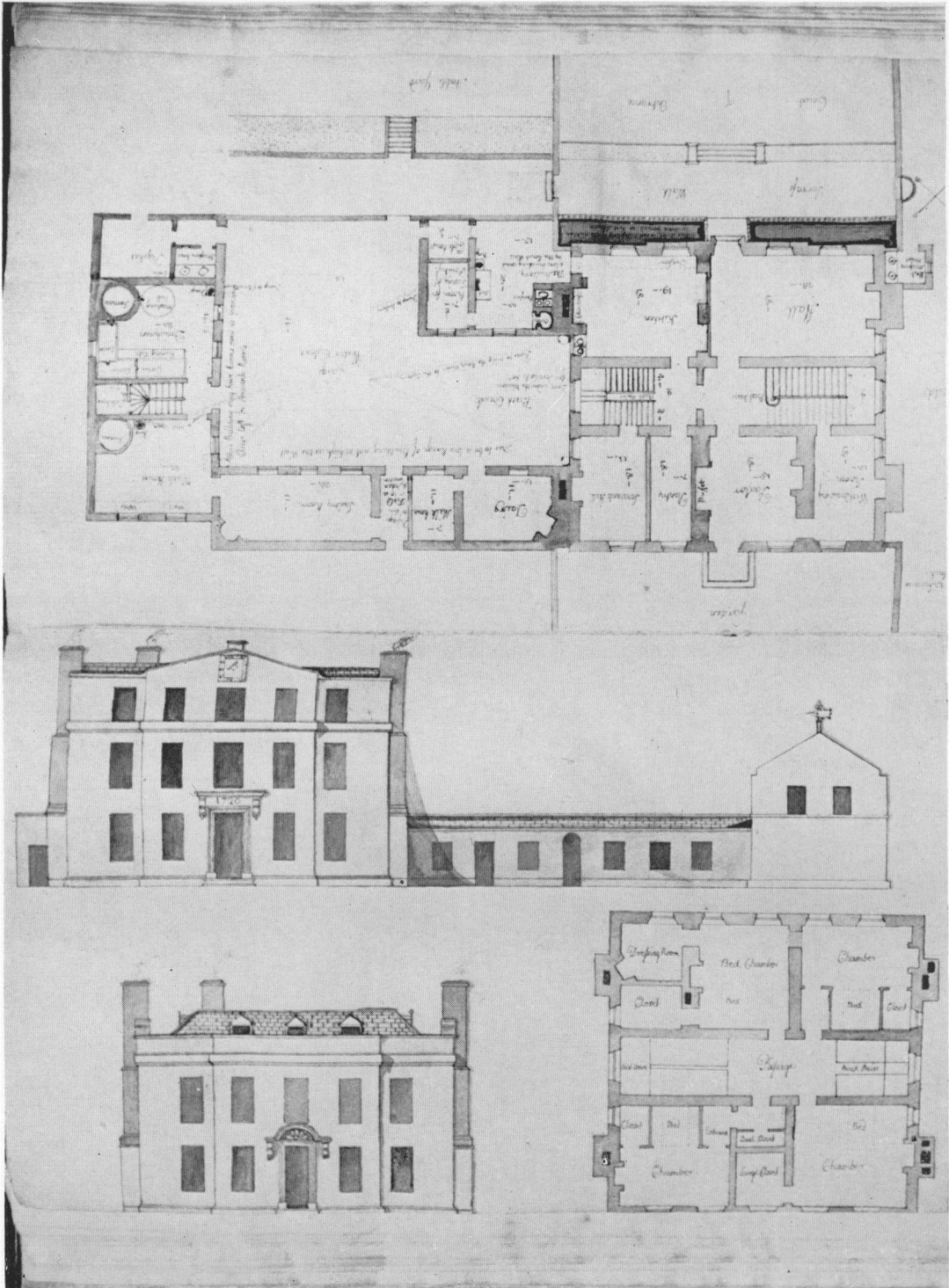


Fig.71 Plans and two elevations of a farmhouse, 1720 [44, 45]

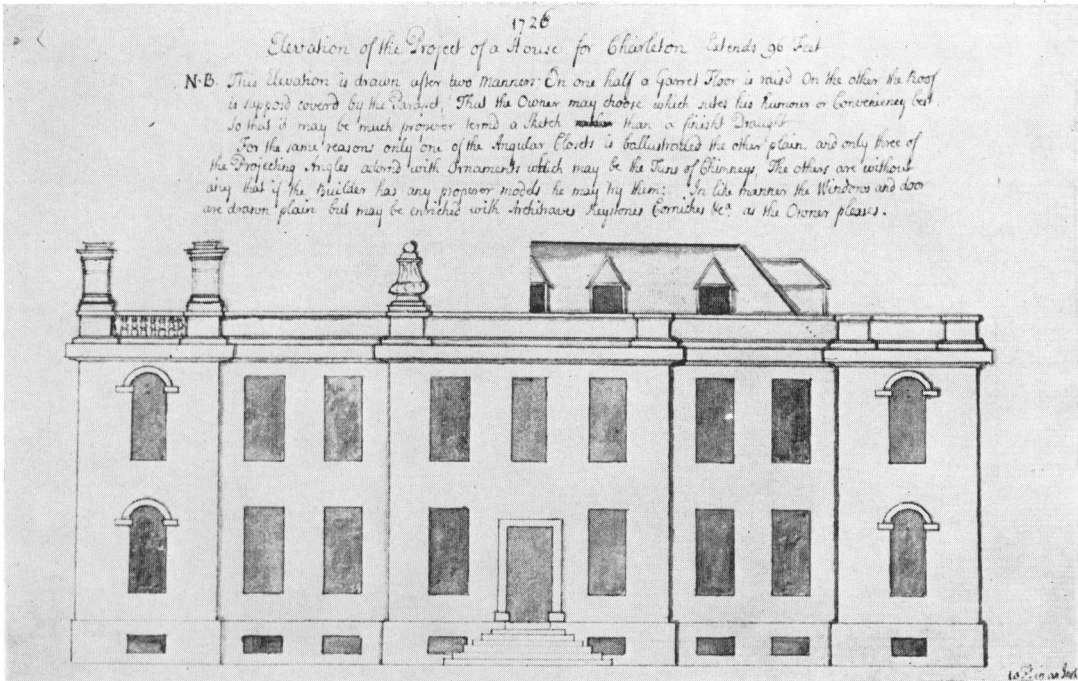


Fig. 72 'Elevation of the project of a house for Charleton', 1726 [60]

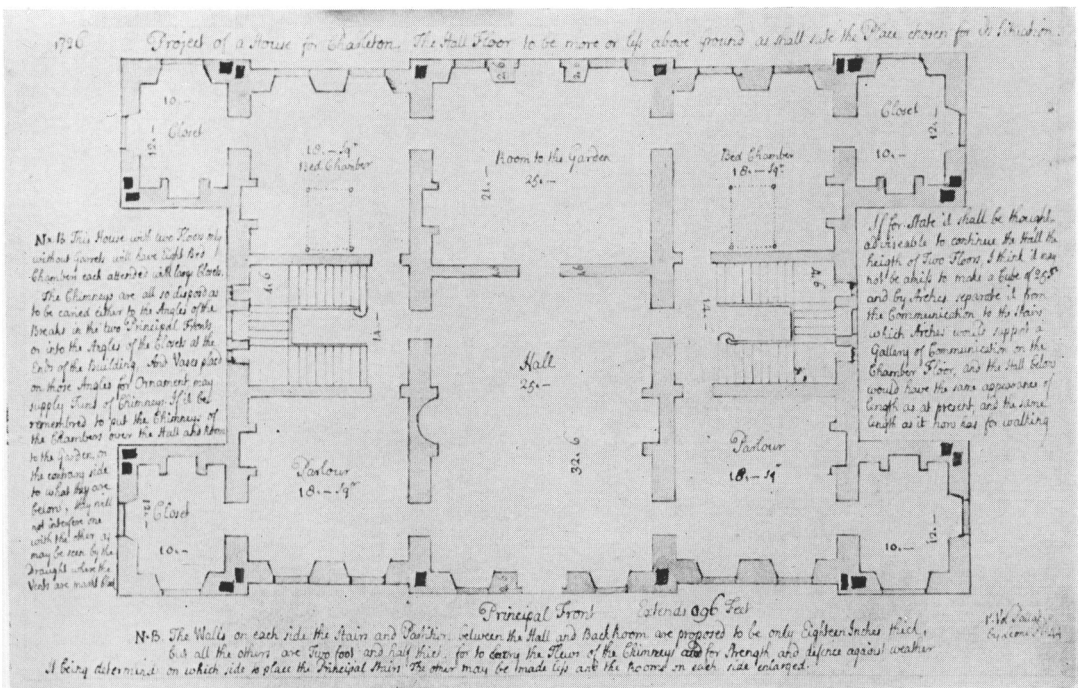


Fig. 73 Plan for Charlton House, 1726 [65]

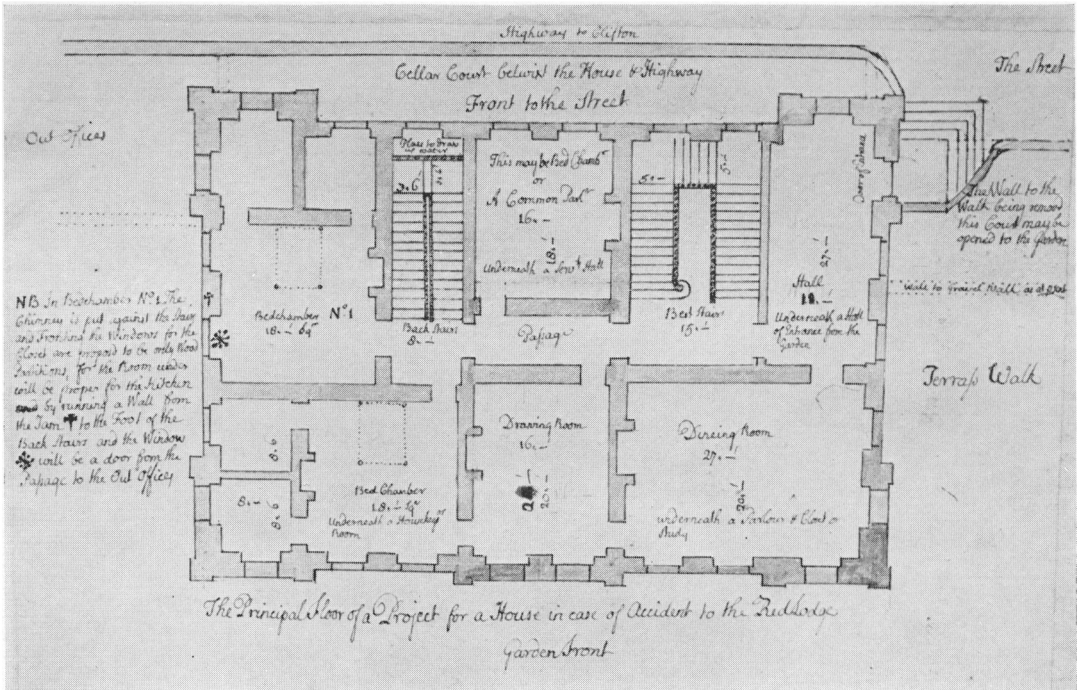


Fig.74 Plan of a house to replace the Red Lodge [56]

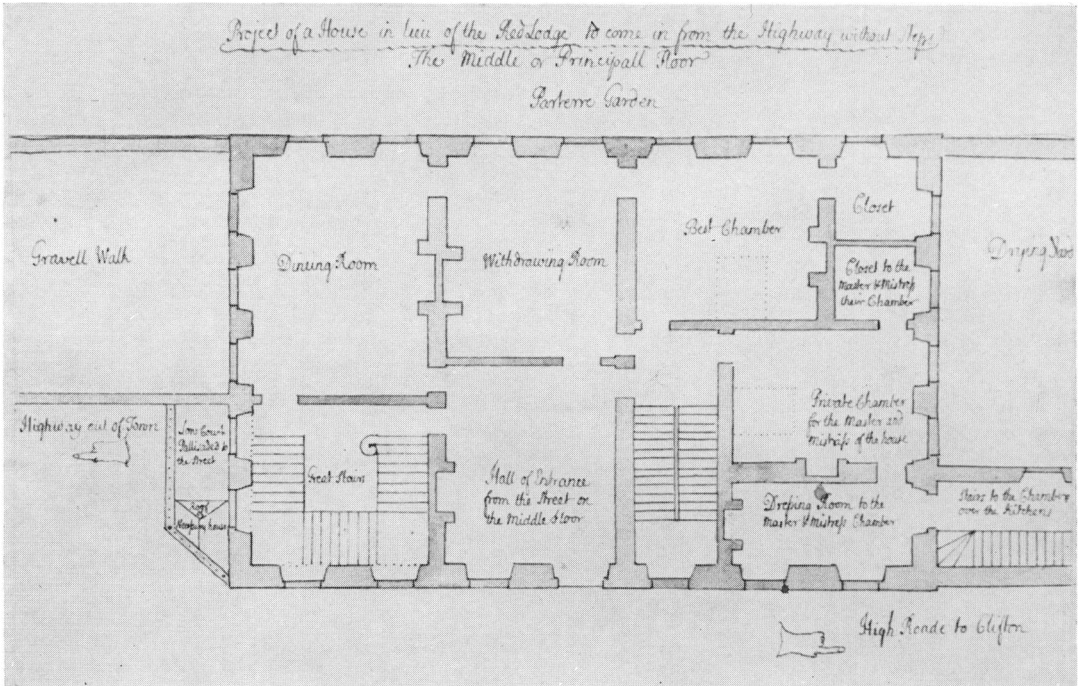


Fig.75 Plan of a house to replace the Red Lodge [61]

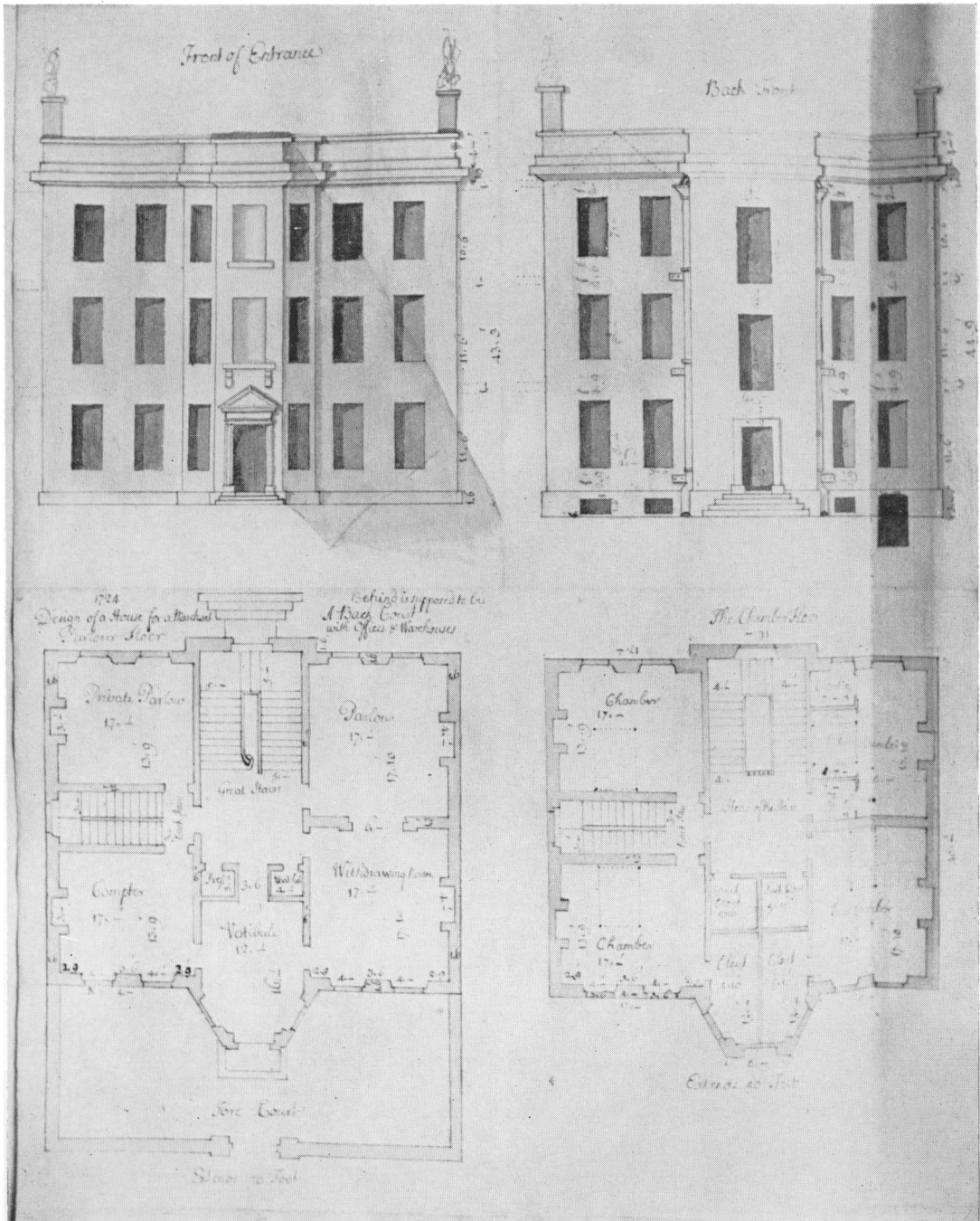


Fig. 76 'Design of a house for a merchant', 1724 [98]

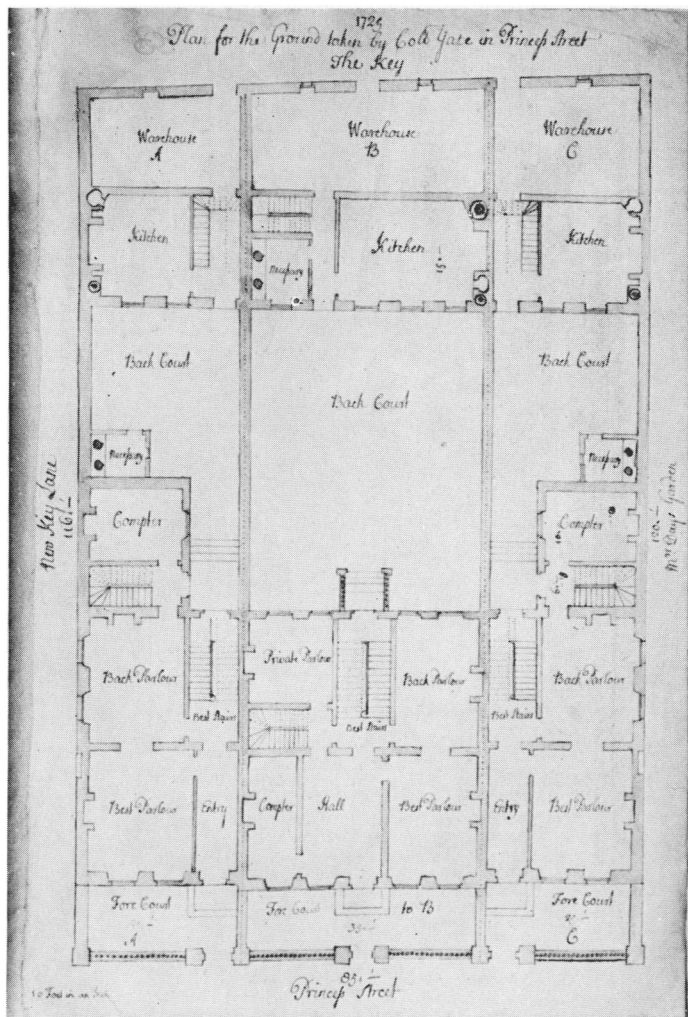


Fig.77 Plan of Colonel Yate's site in Prince Street, Bristol [96]

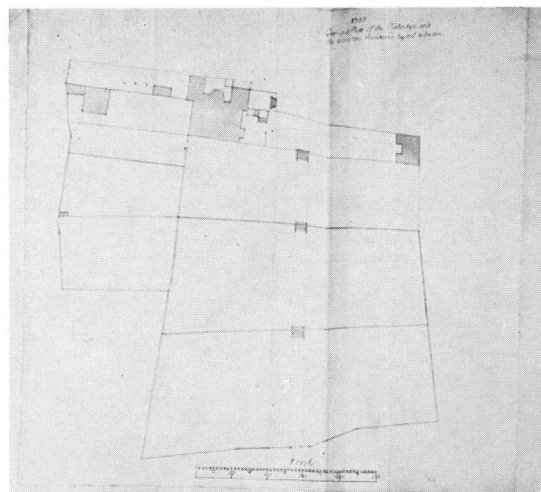


Fig.78 'Ground Plott of the Red Lodge and the Gardens', 1702 [69]

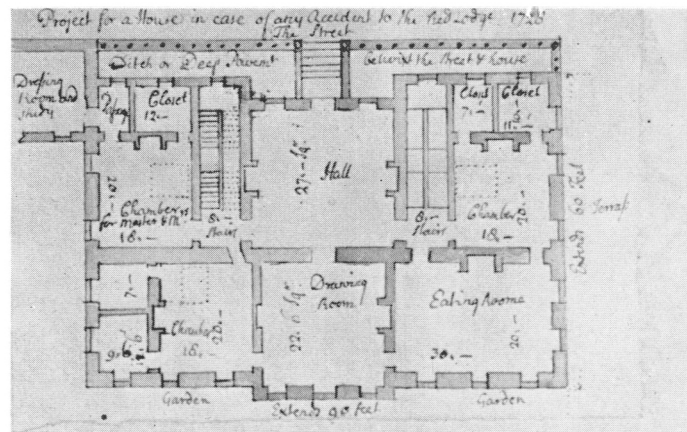


Fig.79 'Project for a house in case of any accident to the Red Lodge 1728' [20]

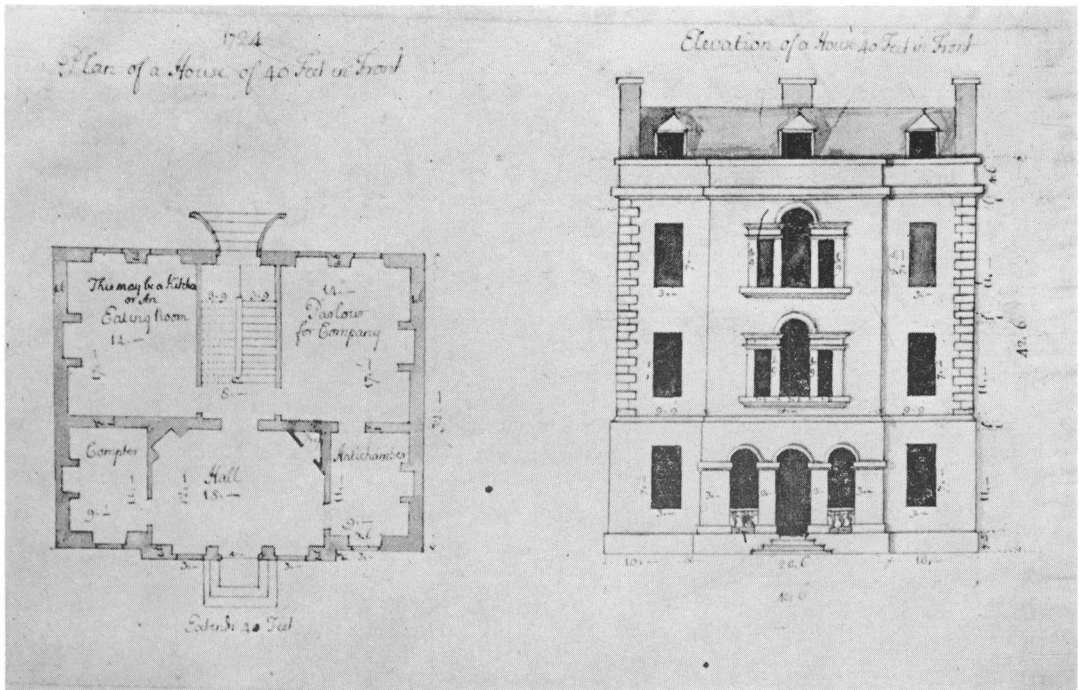


Fig.80 Elevation and plan of a house of 40 ft frontage, 1724 [9]

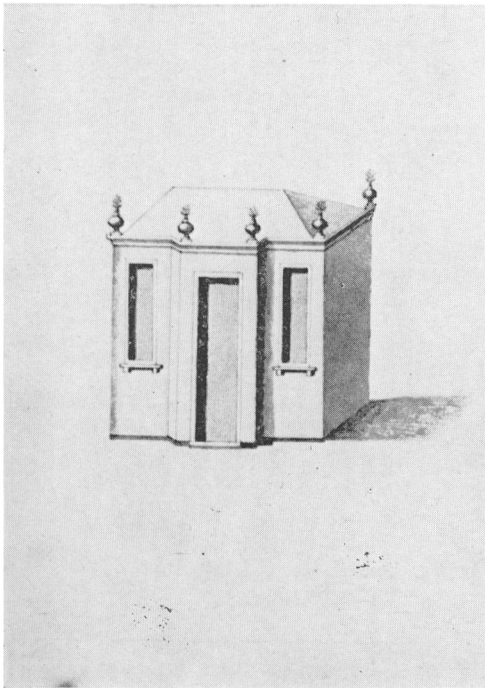


Fig.81 A small pavilion [81]

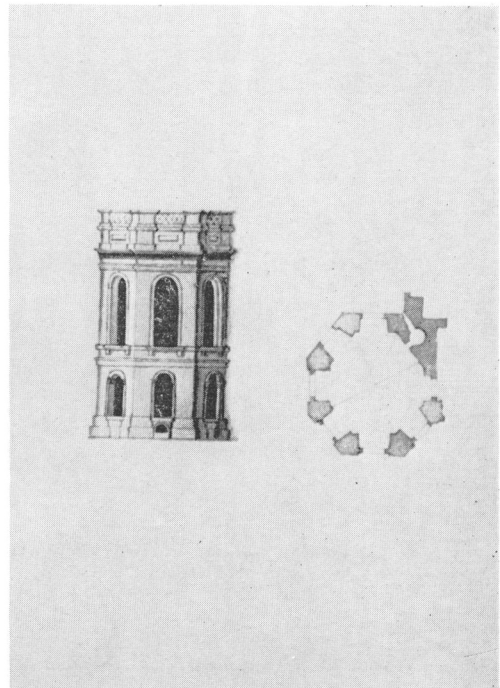


Fig.82 Plan and elevation of an octagonal pavilion [82]

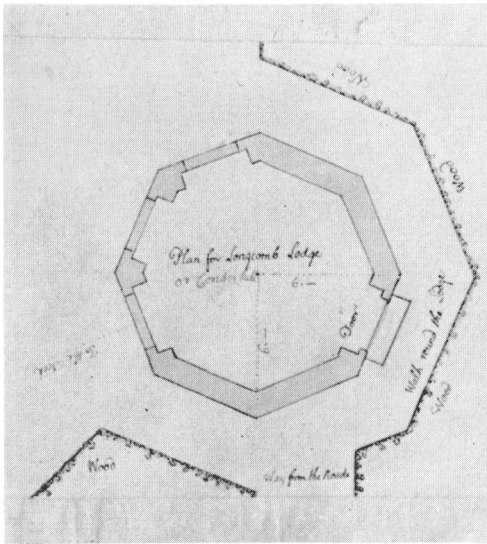


Fig.83 'Plan for Longcomb Lodge or Congerhill' [24]

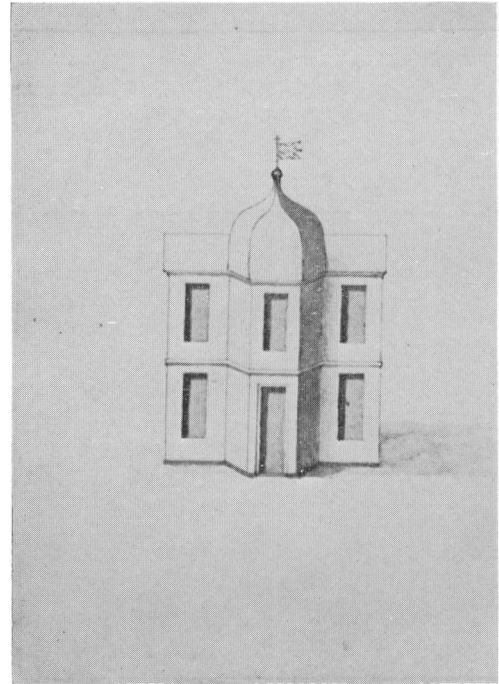


Fig.84 Sketch of a pavilion [108]

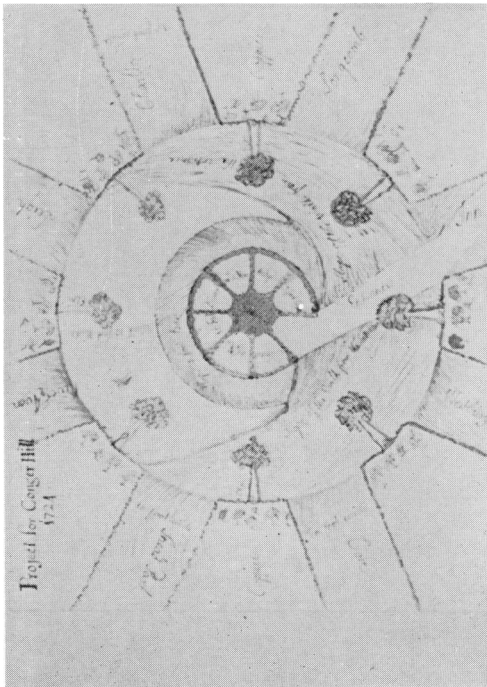


Fig.85 Site plan for a view-point at Conger Hill, 1724 [109]

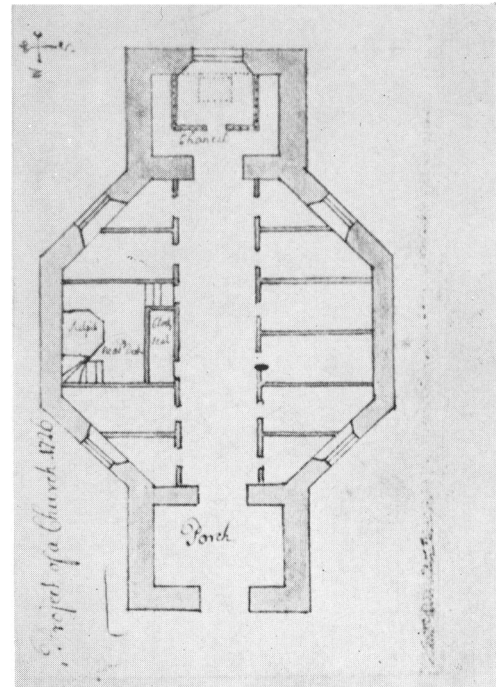


Fig.86 Plan for a polygonal church, 1726 [104]

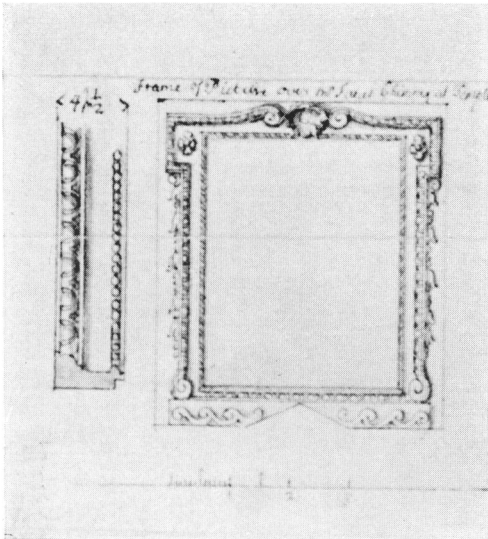


Fig.87 Overmantel frame for Francis Fane's chimney-piece [Fig.88, No. 105]

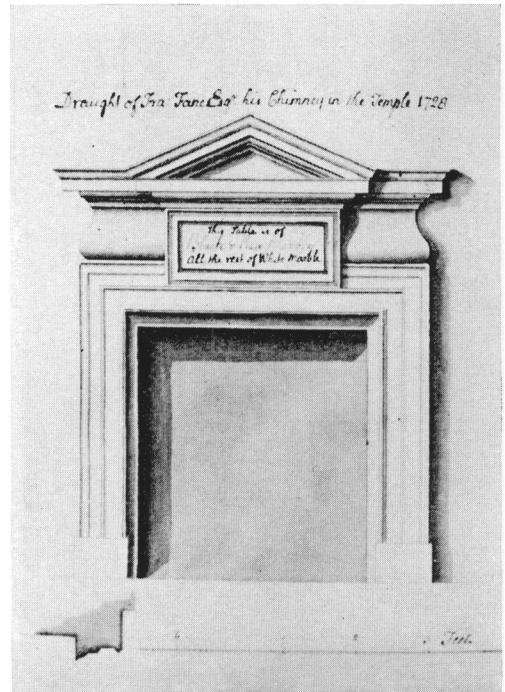


Fig.88 Chimney-piece for Francis Fane, 1728 [103]

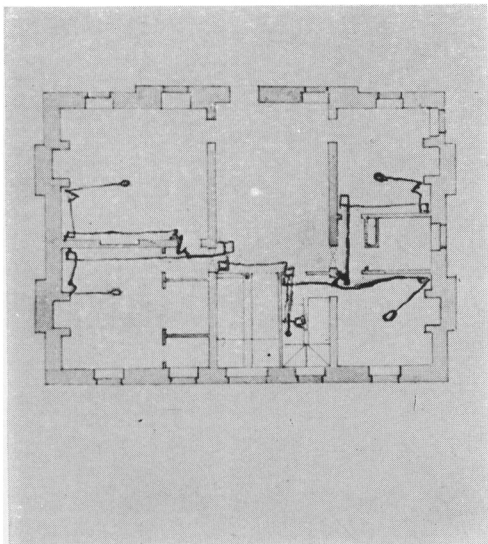


Fig.89 Plan for a small house with (?) bell-pull system [47]

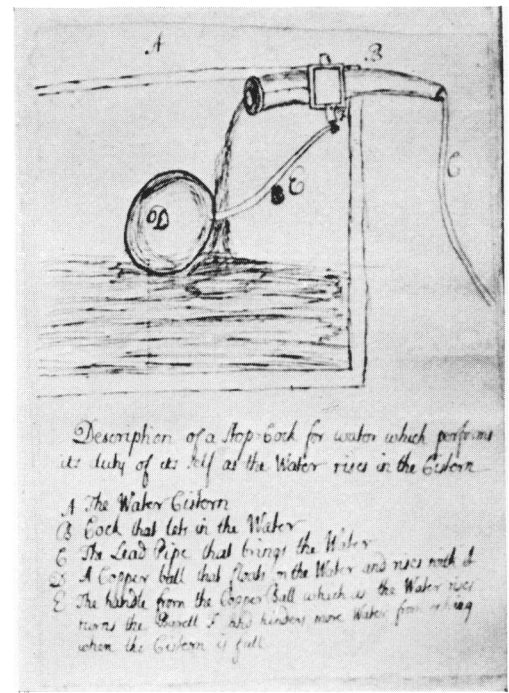


Fig.90 Drawing of a ball-valve stop-cock [48]

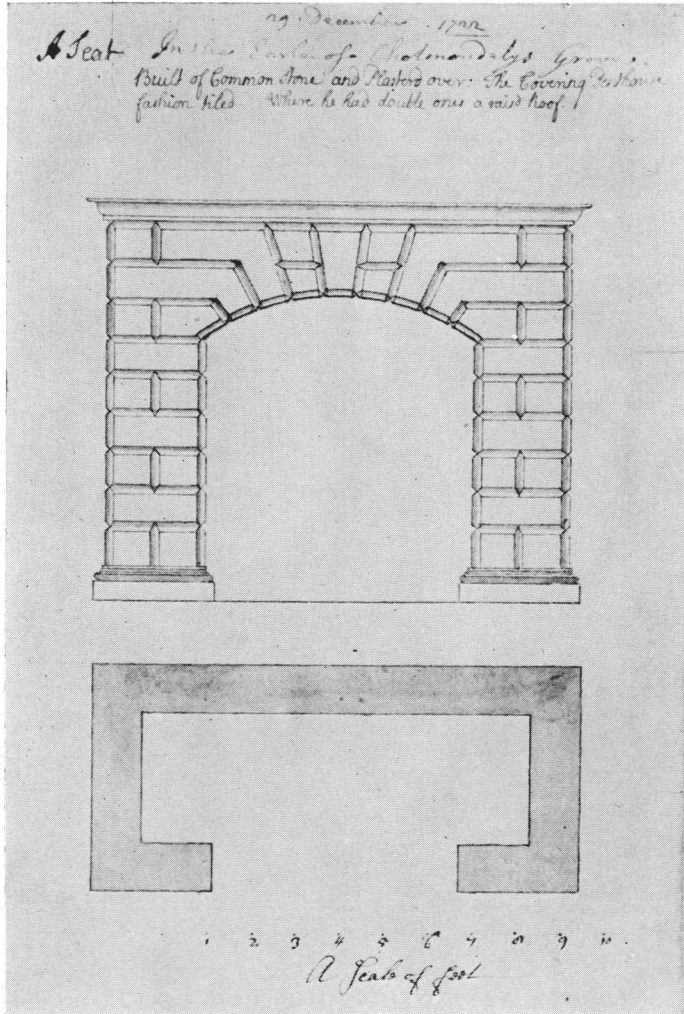


Fig.91 Seat in the Earl of Cholmondeley's grove, plan and elevation [18]

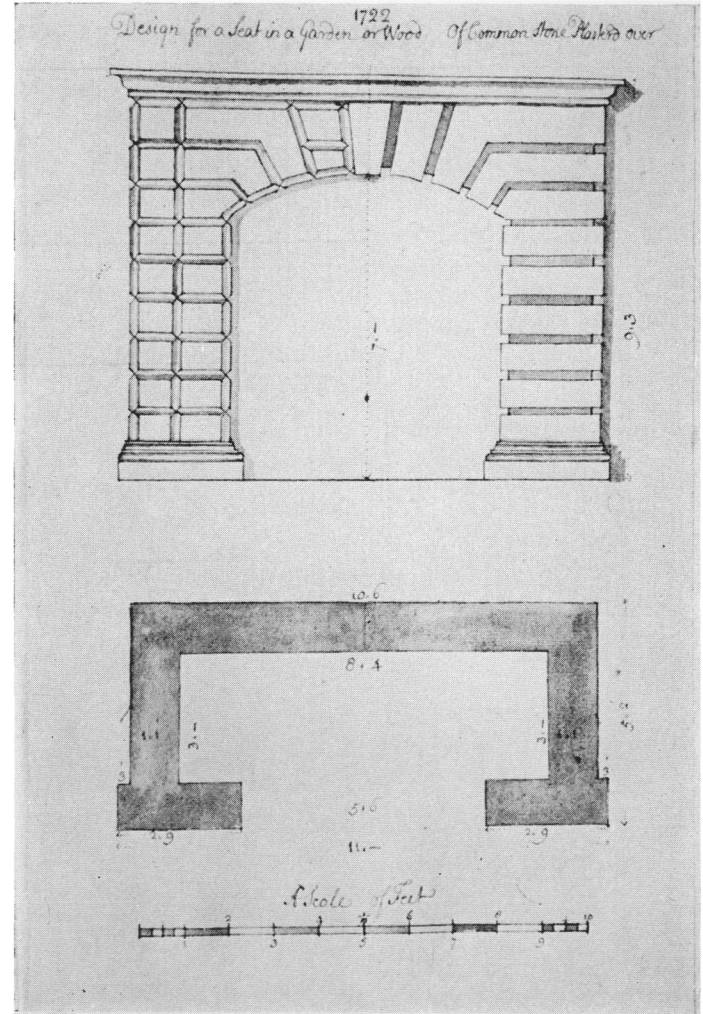


Fig.92 Plan and elevation of a garden alcove seat, 1722 [50]

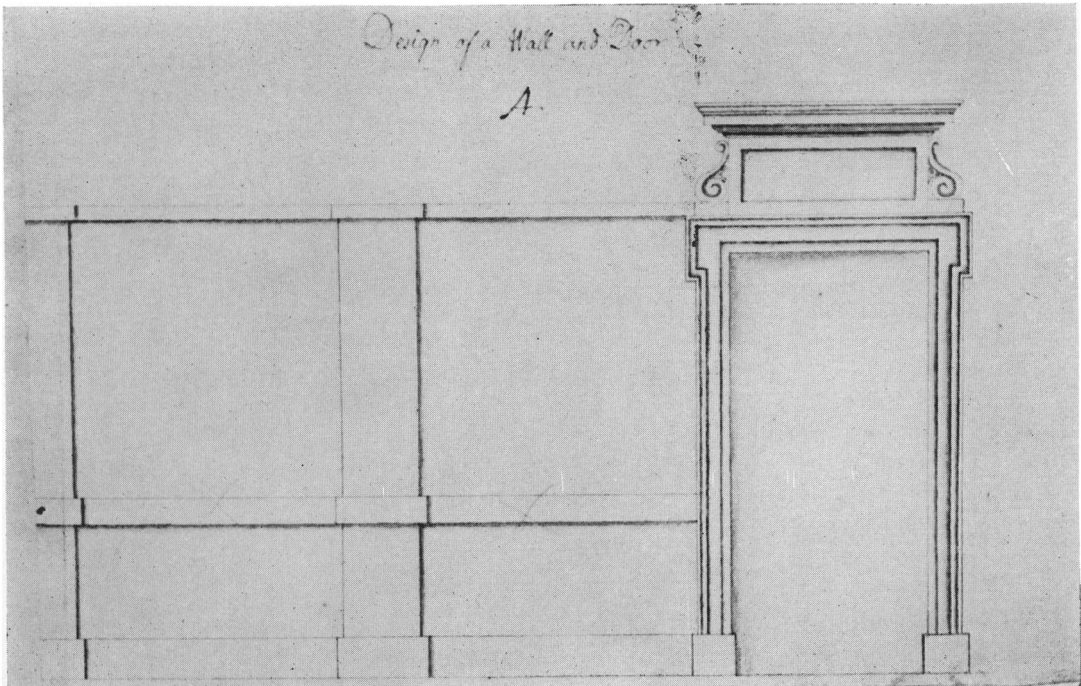


Fig.93 'Design of a wall and door: A' [33]

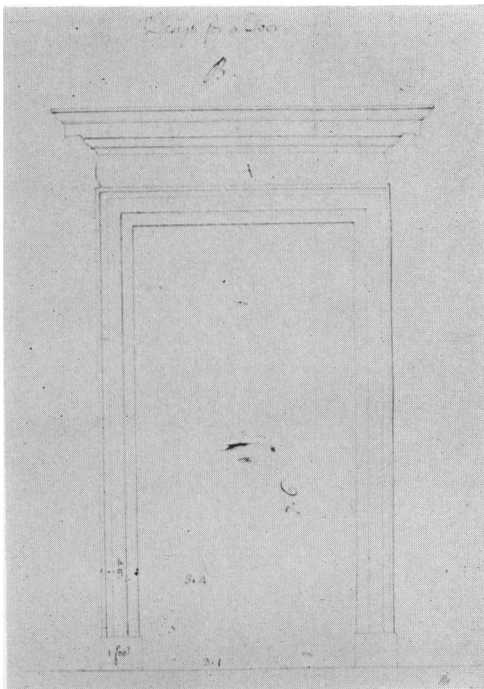


Fig.94 'Design for a door: B' [23]

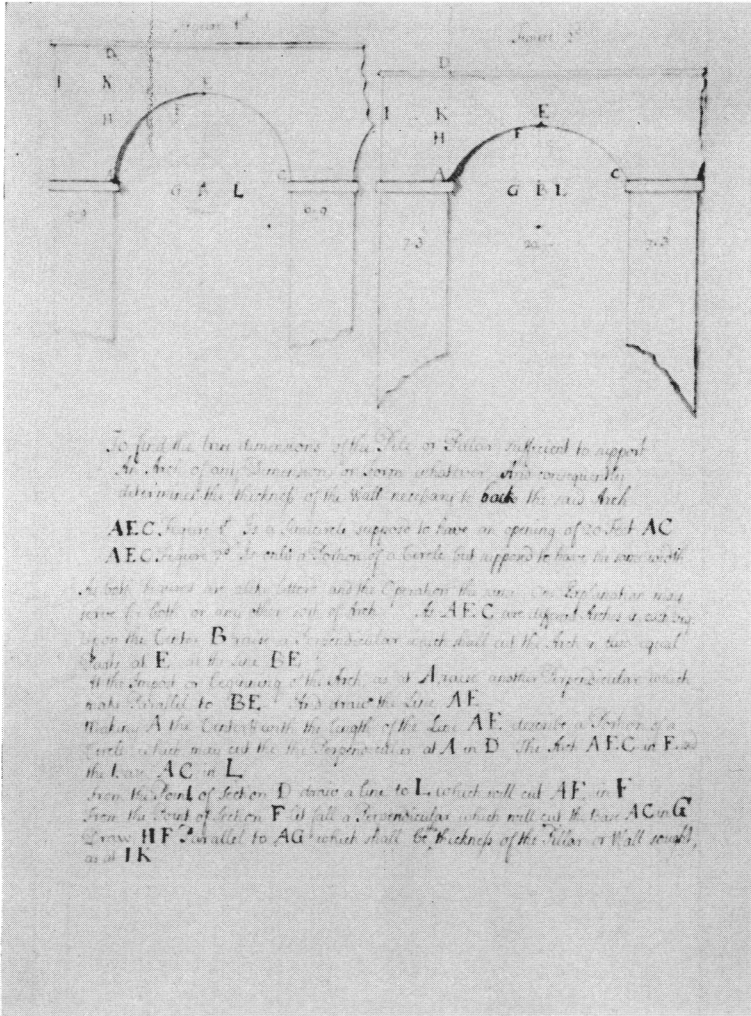


Fig. 95 Demonstration of the mass needed to support an arch [83]

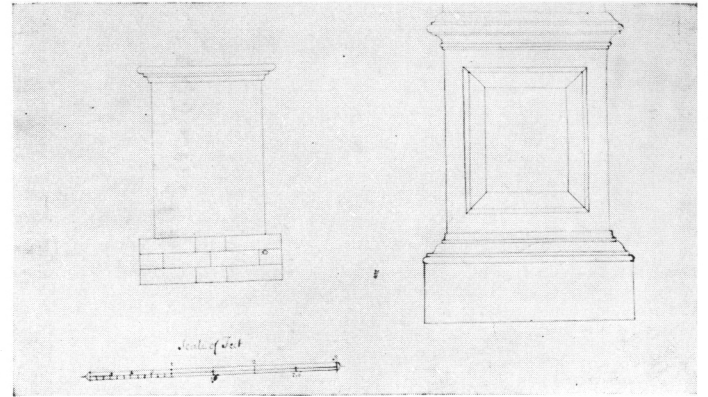


Fig. 96 Elevations of two pedestals [54]

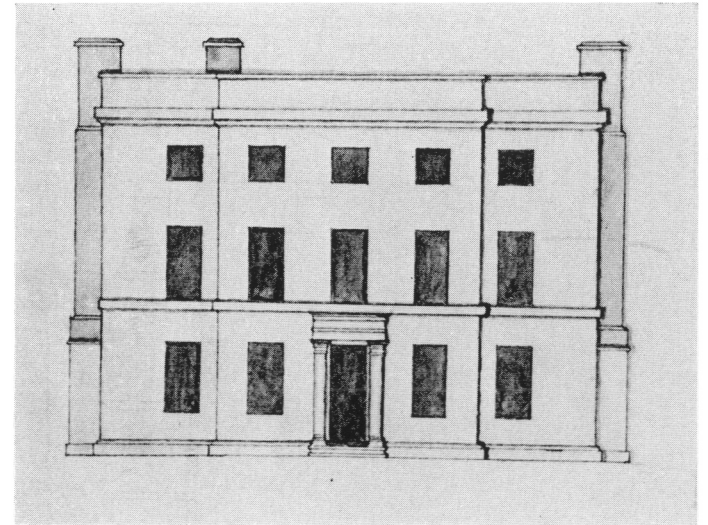


Fig. 97 Elevation of a small country house [88]

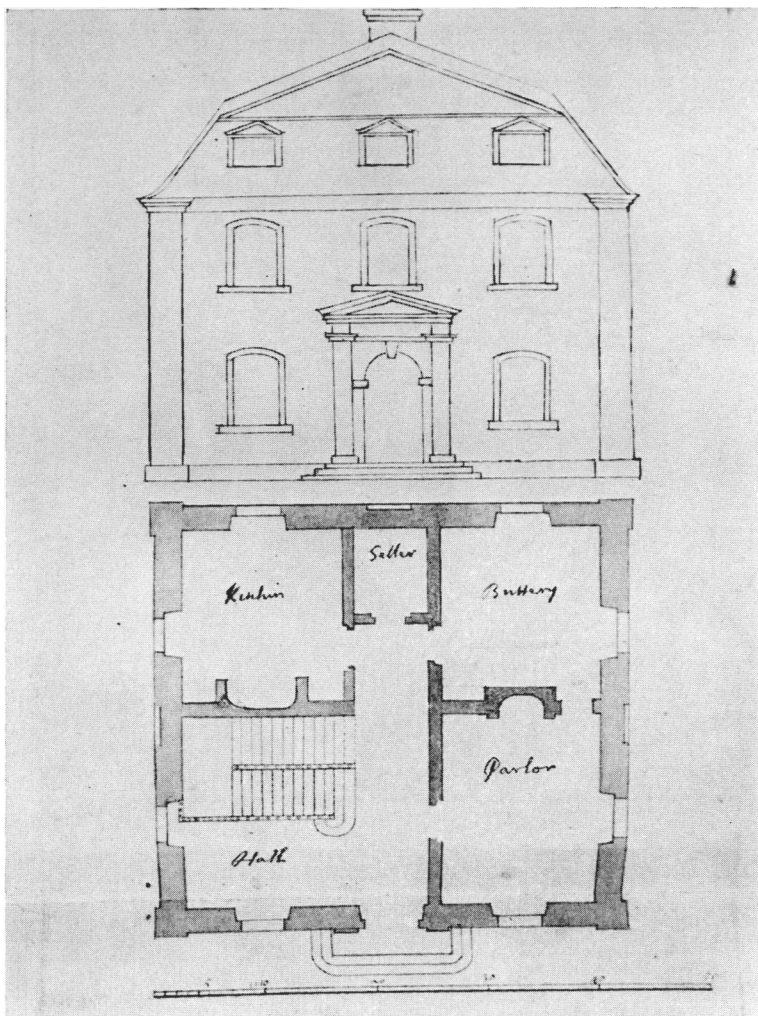


Fig. 98 *Plan and elevation of a house* [93]

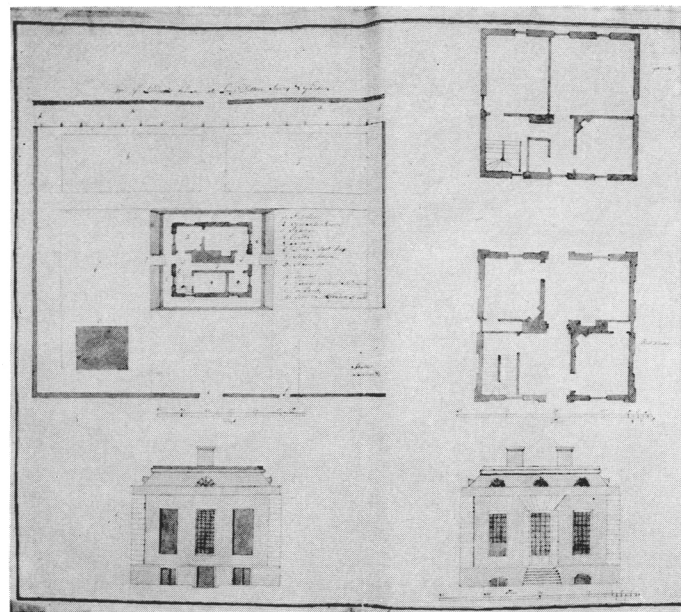


Fig. 99 *'Mr G. London's house at Long Ditton Surry & Garden'* [51]

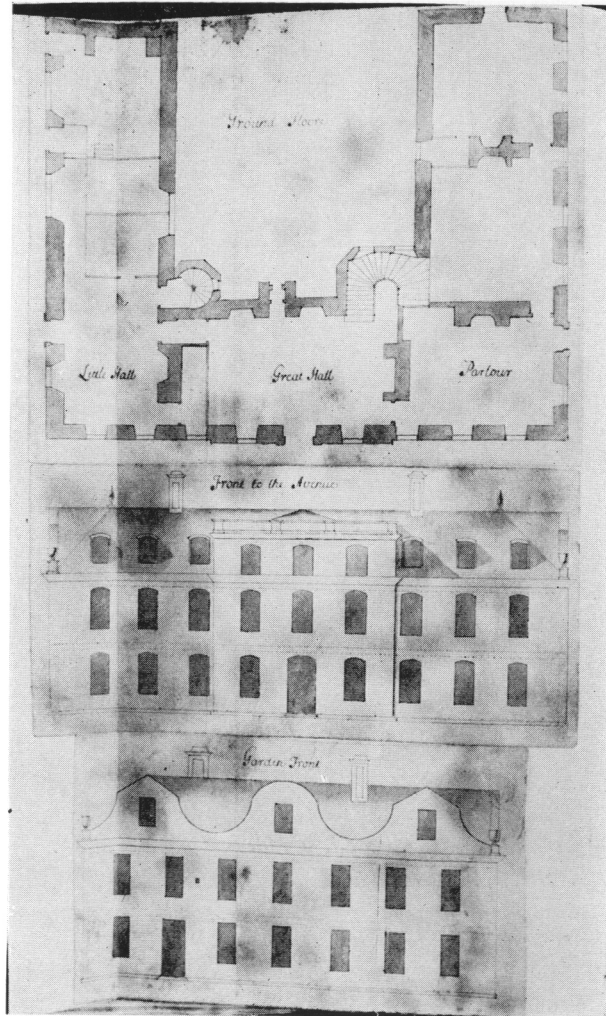


Fig. 100 Designs for a U-shaped house (Kings Weston?) [115-117]

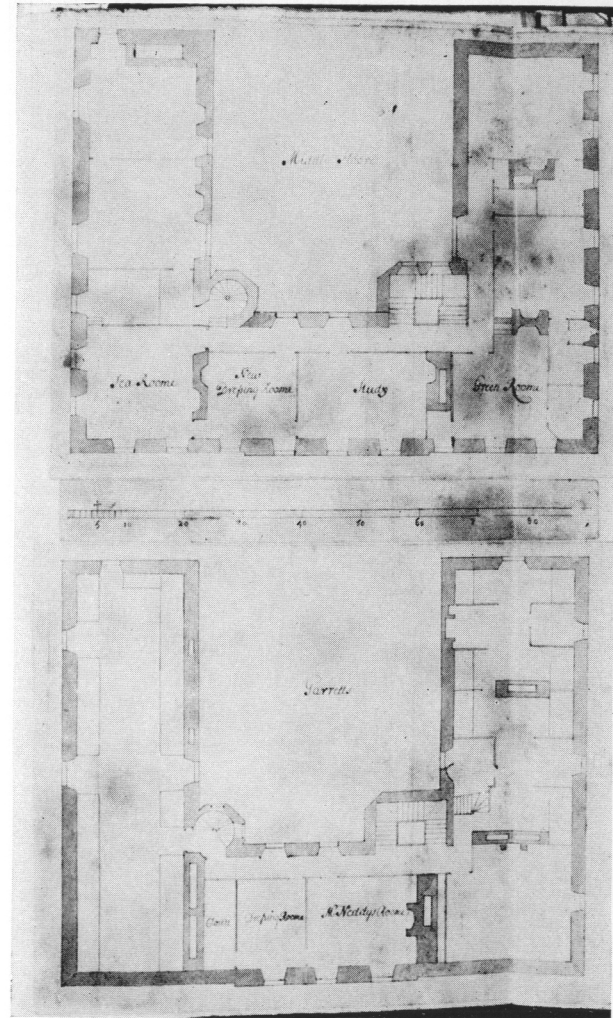


Fig. 101 Designs for a U-shaped house [118-120]

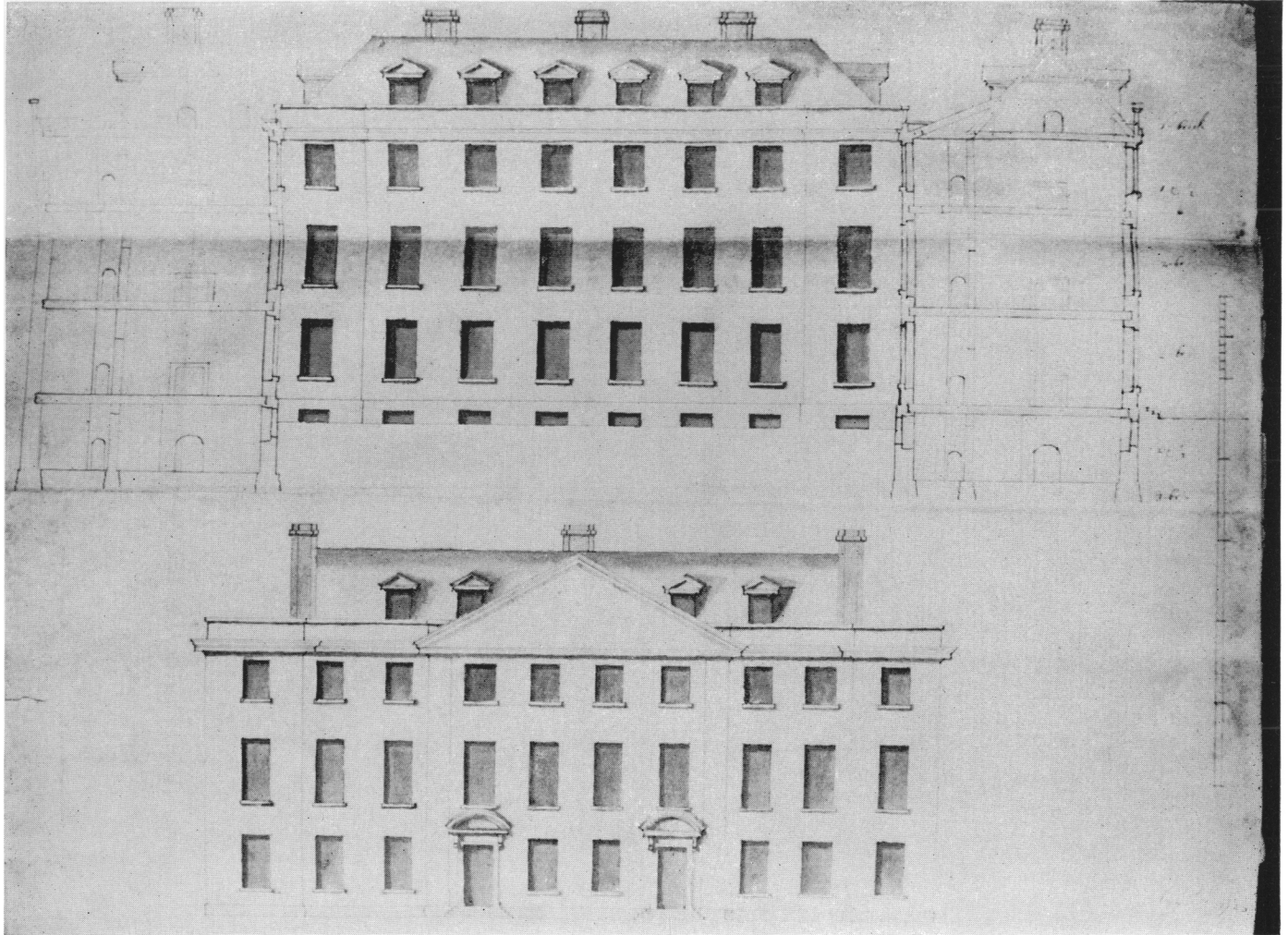


Fig. 102 *Design for a pair of houses, 1723* [125]

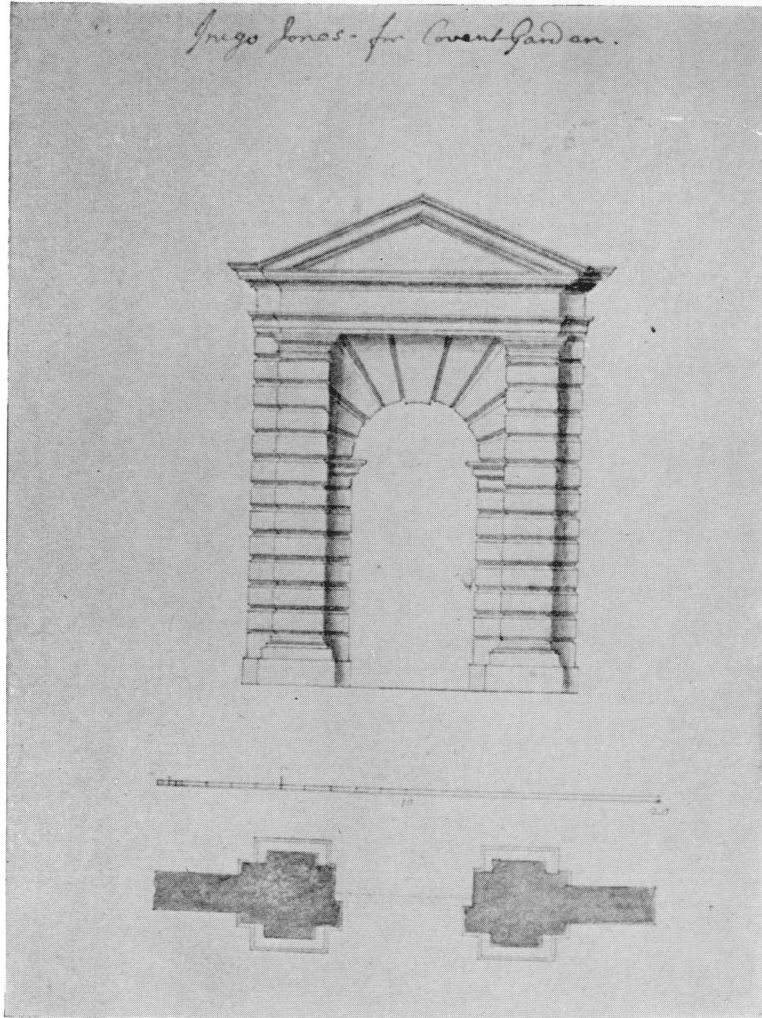


Fig. 103 Plan and elevation of one of the gateways flanking St Paul's, Covent Garden [110]

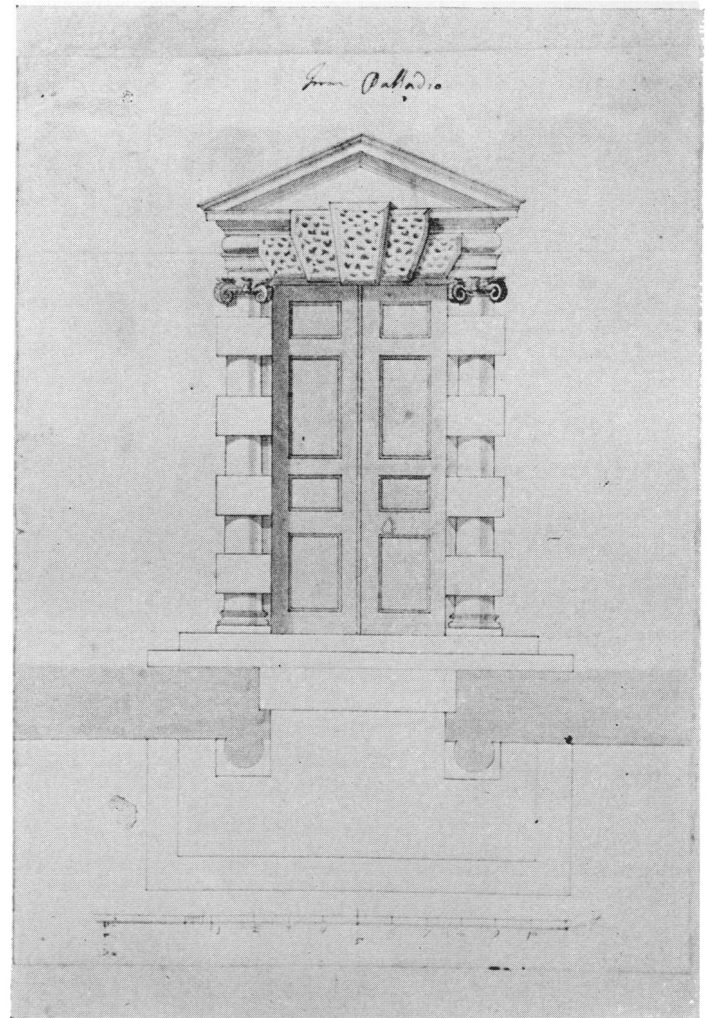


Fig. 104 Plan and elevation of a rusticated Ionic doorway [2]