

The JOURNAL of THE INSTITUTE OF NAVIGATION

Volume VII

Number 1

January 1954

Man and Machine in Navigation	1
PRESIDENTIAL ADDRESS	
Jean Rotz and the Variation of the Compass, 1542	9
E. G. R. TAYLOR	
Equivalent Tail-winds for Shannon to Gander	16
D. G. HARLEY	
The Accuracy of Route Wind Forecasts for Aviation	28
C. S. DURST	
The Precision of the Air Almanac and A.P. 3270	49
D. H. SADLER	
A Survey of Five Years' Progress in Marine Radar	59
F. J. WYLIE	
Forum: A Norse Bearing-dial?	78
Low-altitude Astro Sights	84
Priming and Lagging	88
The Size of Navigation Tables	90
Record	92
Reviews: Sight Reduction Tables for Air Navigation	98
Record Tables	103
A New Navigational Textbook	106
Geography from the Air	107
Correspondence	108

THE INSTITUTE OF NAVIGATION
AT THE ROYAL GEOGRAPHICAL SOCIETY
1 KENSINGTON GORE LONDON SW7

JOHN MURRAY (PUBLISHERS) LTD., 50 ALBEMARLE STREET LONDON W1

PRICE SEVEN SHILLINGS AND SIXPENCE

THE INSTITUTE OF NAVIGATION

Patron

H.R.H. THE DUKE OF EDINBURGH, K.G.

OFFICERS AND COUNCIL 1953-54

President

D. H. Sadler, O.B.E.

Vice-Presidents

Air Chief Marshal the Hon. Sir Ralph Cochrane, G.B.E., K.C.B., A.F.C.

Captain F. J. Wylie, R.N.(ret.)

Hon. Treasurer: Francis Chichester

Chairman of the Technical Committee

Wing Commander E. W. Anderson, O.B.E., D.F.C., A.F.C.

Chairman of the Executive Committee: Captain G. C. Saul

Other Members of the Council

Dr. R. d'E. Atkinson

Captain J. D. F. Elvish, O.B.E.

Squadron Leader D. Bower, M.B.E.

Group Captain E. Fennessy, O.B.E.

Commander A. M. Coleman, O.B.E., D.S.C., R.N.(ret.)

A. H. Jessell

Vice Admiral A. Day, C.B., C.B.E., D.S.O.

Captain A. M. A. Majendie

Dr. G. E. R. Deacon, F.R.S.

Captain G. W. Wakeford, M.B.E.

The directors of navigation at the Admiralty, the Air Ministry and the Ministry of Transport and Civil Aviation are invited to attend meetings of the Council as *ex-officio* members.

Executive Secretary: M. W. Richey. Assistant Secretary: Miss L. M. A. Tower

The Journal of the Institute of Navigation

THE *Journal* is published quarterly by the Institute and is edited by the Executive Secretary. It contains original papers contributing to the science of navigation, including those presented at meetings of the Institute together with the ensuing discussion. In addition the *Journal* includes a record of current navigational work, reviews of important books, and other matters of concern to those interested in navigation.

The *Journal* is free to all members of the Institute. It is sold to the public at seven shillings and sixpence per copy or, by subscription, at thirty-one shillings per annum (post free) and may be obtained through all booksellers and John Murray (Publishers) Ltd., 50 Albemarle Street, London W1. American subscriptions through Transatlantic Arts Inc., Hollywood-by-the-Sea, Florida, at \$1.50 per copy or \$6 per annum (post free).

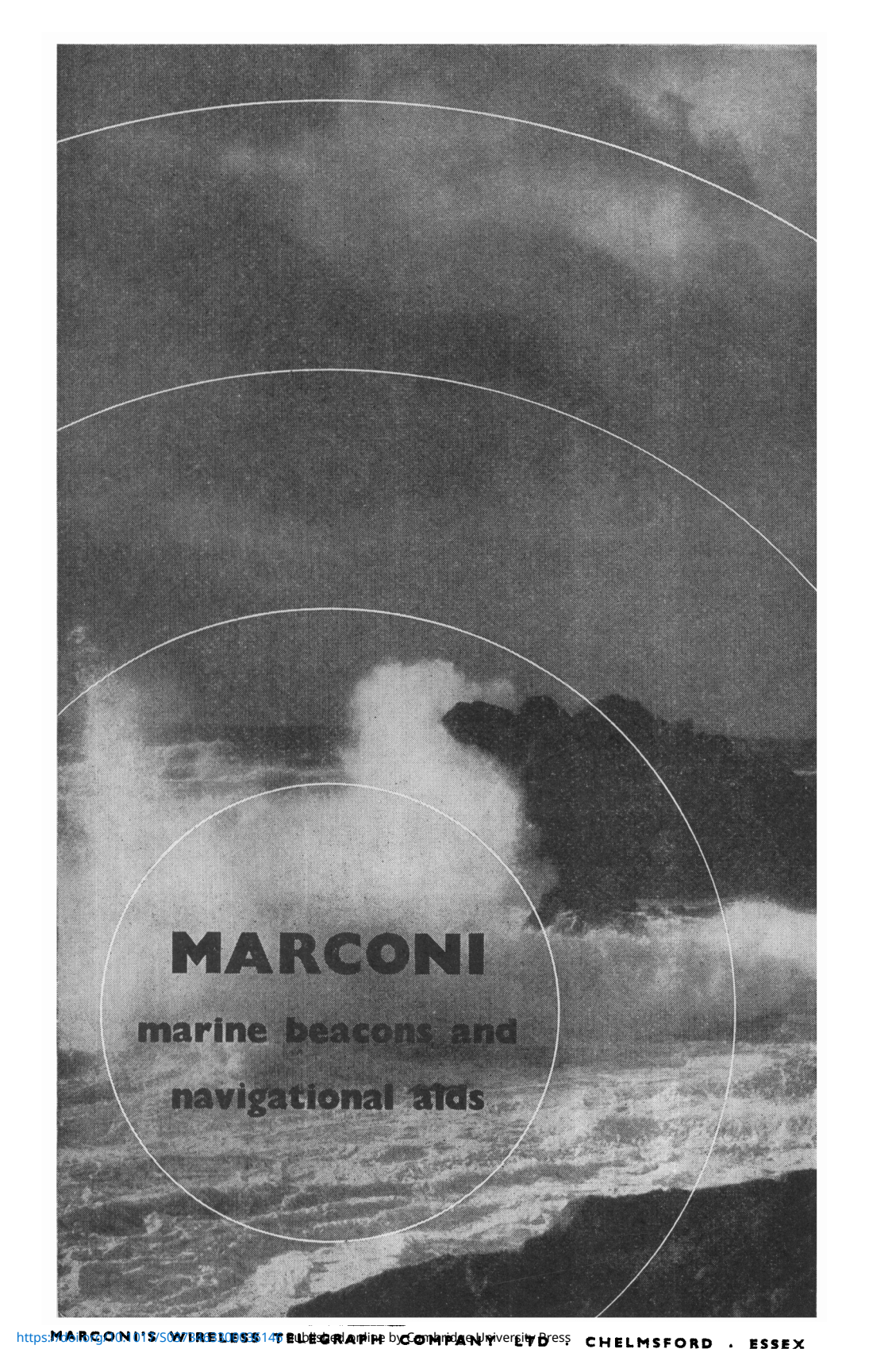
Contributions, which are welcomed from both members and non-members, should be addressed to the Editor.

Enquiries for advertising space should be addressed to the Advertising Manager.

The postal address of the Institute is:

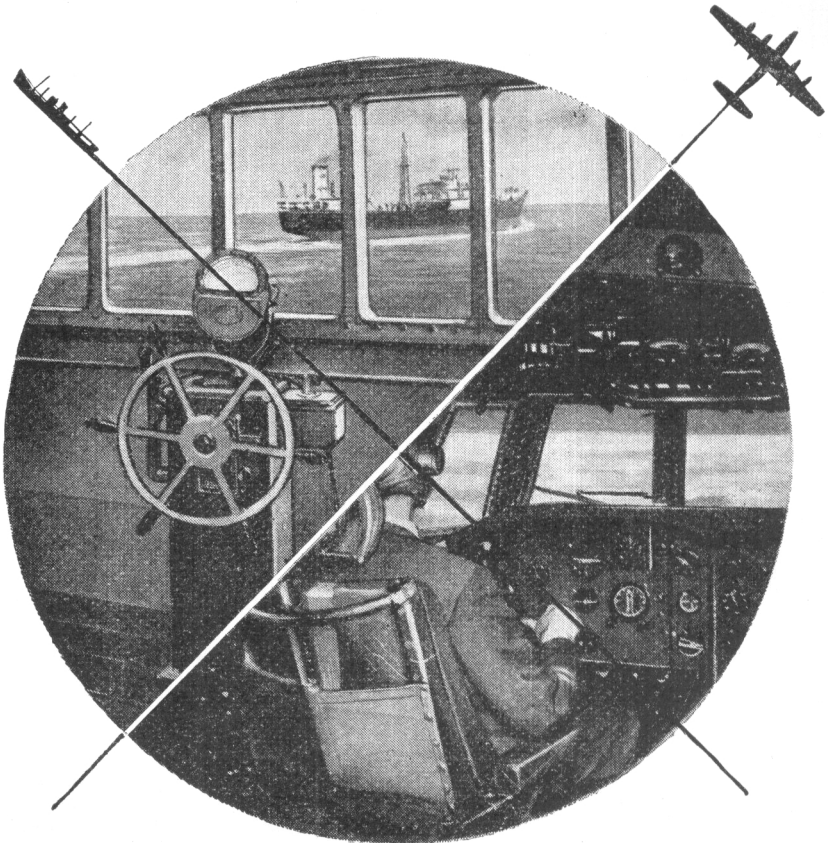
The Institute of Navigation,
at The Royal Geographical Society,
1 Kensington Gore, London SW7.

Telephone: Kensington 5021.



MARCONI
marine beacons and
navigational aids

Navigation by SPERRY



by Sea or Air

Sperry equipment facilitates accurate navigation along the ocean and air routes of the world, making a notable contribution to efficient operation.

SPERRY *Marine and Aeronautical
Compasses and Navigational Equipment*

THE SPERRY GYROSCOPE CO LTD. GREAT WEST RD., BRENTFORD, MIDDX.

The time
to consider
his future...



The proudest day in a cadet's life is when, having successfully completed his course, he receives his pass to a new, exciting and adventurous life afloat. In the years to come he will remember this day above all others. He will remember also the people who made possible his years of training, and his future. On such occasions, a gift may say more than words—particularly if it proves to be of great value all through life. The discerning person could make no finer choice than a Kelvin Hughes Sextant. Each instrument is craftsman built to the highest precision standards, and carefully tested so as to ensure a lifetime of satisfactory service. A noble gift indeed!

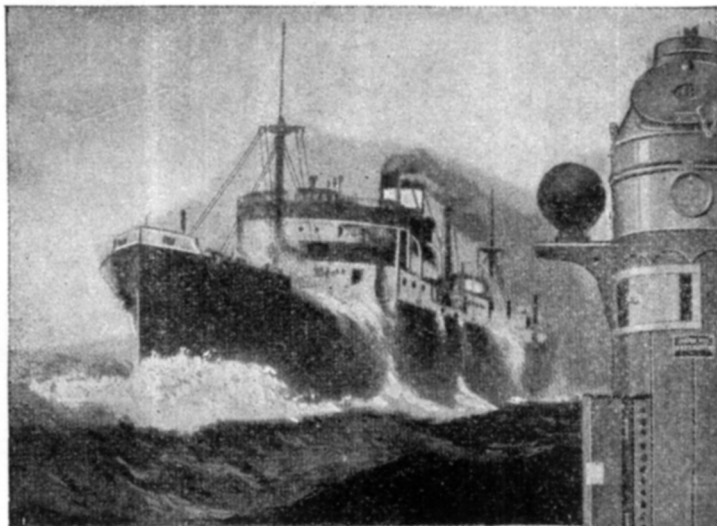
KH

KELVIN HUGHES

THE TWO GREATEST NAMES IN NAVIGATION



KELVIN & HUGHES (MARINE) LTD · 99 FENCHURCH ST · LONDON · EC3



FULL SPEED AHEAD!

WITH



NAVIGATIONAL INSTRUMENTS

The "HEZZANITH" Patent MARK VII

PROJECTOR BINNACLE AND COMPASS

By means of a series of optical elements an enlarged erect image of a portion of the card covering an arc of 40° in length is produced on a ground glass screen which is viewed in an adjustable plane mirror.

All stray light is effectively screened, and there is a completely unobstructed view of the card from above, permitting the normal use of an azimuth instrument by day or night.

Send for our special Projector Binnacle
Leaflet (N.J.53).



HEATH & COMPANY

(Incorporated with W. F. Stanley & Co. Ltd.)

NEW ELTHAM - LONDON, S.E.9

Phone: ELTHAM 3836

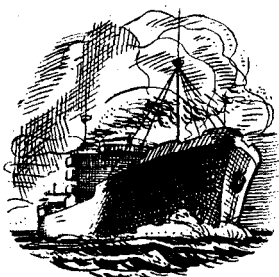
Cables: "Polaris, Souphone, London"



Sailors of
the past...

FACED CONSTANT DANGER

Perils surrounded the great sailors of the past: Phormio the Athenian, the Vikings, Columbus, Captain Cook. Against uncharted reefs, or drifting icebergs in the Arctic fog, they had no bulwark but luck and the mariner's sixth sense of imminent danger. But it's a different story today; science minimises danger and difficulty and BTH Marine Radar—reliable and simple to operate—ensures safe navigation in any sea and in all weathers.



Write — mentioning this journal
—for descriptive leaflets dealing
with the following—

- Adaptability for all types of vessels
- Ease of maintenance
- Range and bearing resolution
- Range performance
- Reliability
- Simplicity of operation

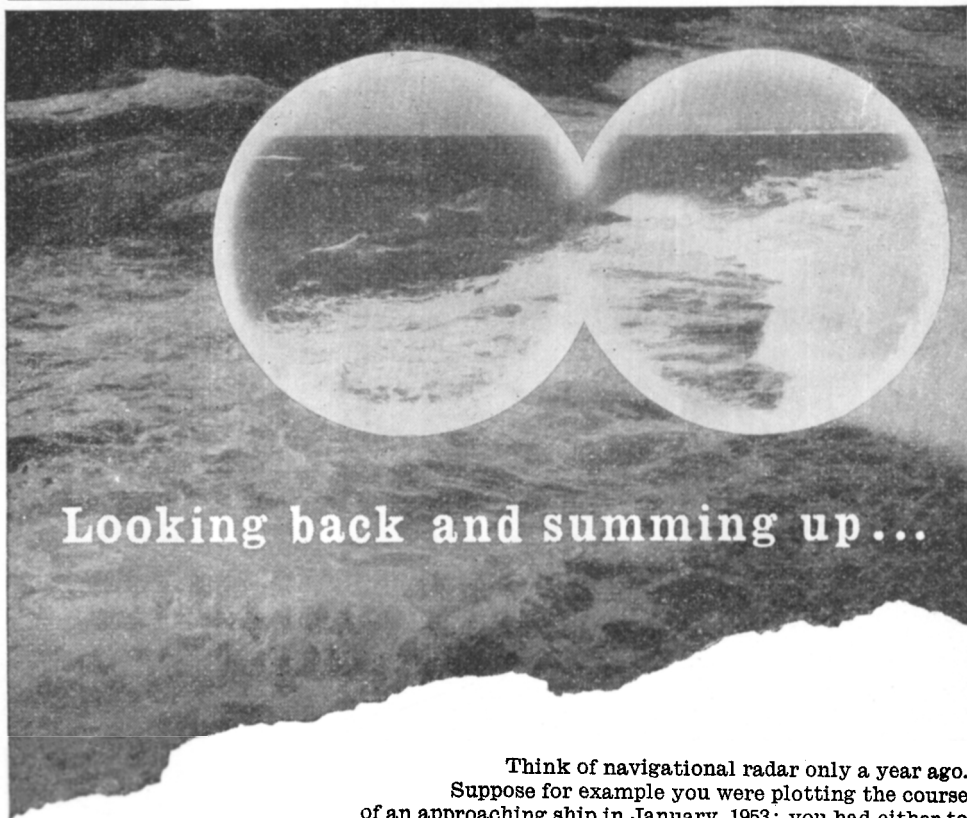


MARINE RADAR
protects the modern mariner

THE BRITISH THOMSON-HOUSTON COMPANY LIMITED · RUGBY · ENGLAND

Member of the AEI group of companies

A4643



Looking back and summing up...

Think of navigational radar only a year ago. Suppose for example you were plotting the course of an approaching ship in January, 1953: you had either to transfer your own and her position to a chart; or try to do the job on the face of the tube — which was unsatisfactory in many ways besides parallax.

The Deccaplot put an end to all that in April.

Or take the matter of radar display on the open bridge — either on a small vessel without wheelhouse or on a ship which required an additional display in the open. There simply was not a display to be had that would stand the weather.

The Decca Type 4207 waterproof display supplied the answer to that one in May.

Or — to become a trifle more technical — take the selection of pulse length.

Everyone knew perfectly well that you needed a long pulse (1.0 microsecond) for good painting of poor targets or those at extreme range; and a short pulse (0.1 microsecond) for discrimination.

But even the best informed authorities considered that such a combination in one set was not commercially practicable.

Well, in September the Decca 45 appeared with just that ten to one pulse length ratio (h.r.p.), which in combination with a number of other advances in design carried the usefulness of radar as a navigational aid a very long stride forward.

In themselves not a bad year's work . . . Add a new storm warning radar; a new range of instruments for microwave laboratories; an entirely new type of radar landing aid for aircraft; and you have some idea of what we are talking about when we say . . .

DECCA Radar shows the way ahead

Radar Display Tubes with High Resolution

The most important requirements of a radar display tube are that it shall be capable of a resolution at least equal to that of the radar system employed; that it shall present a picture of high brilliance and contrast; and that it shall operate reliably under the continuous and arduous conditions of service encountered in navigational radar applications.

The Mullard range of radar display tubes, developed with the advantage of the vast experience gained in the production of television picture tubes, has been specially designed to meet these requirements.

Characterised by very high definition, high brilliance and contrast, low deflection defocusing, low astigmatism, and long after-glow, these tubes are now being extensively used in a wide variety of navigational radar equipments. Brief descriptive details of these tubes are given below; more comprehensive information will gladly be supplied on request.



	MF 41—15	MF 31—55	MF 13—1	
HEATER V _h I _h	6.3 0.3	6.3 0.3	6.3 0.3	V A
LIMITING VALUES (absolute ratings)				
V _{a2} max.	16	15	11	kV
V _{a2} min.	6	7	5.5	kV
V _{a1} max.	450	†600	450	V
V _{a1} min.	200	250	200	V
-V _g max.	200	200	200	V
DIMENSIONS				
Max. bulb diameter	406	307	127.5	mm
Max. overall length	515	520	289	mm
Useful screen diameter	360	260	108	mm

† Beam current not to exceed 50 μ A



MULLARD LTD., COMMUNICATIONS AND INDUSTRIAL VALVE DEPT.,
CENTURY HOUSE, SHAFESBURY AVENUE, LONDON, W.C.2

MVT 114F

The Elements of Navigation

By C. H. COTTER, M.I.N., F.R.A.S., M.B.A.A., M.S.N.R.

A very thorough treatment of the principles of navigation, in six parts, covering Mathematics, the Sailings, Coastal Navigation, General Astronomy, Nautical Astronomy and Instruments. A knowledge of elementary algebra and geometry is assumed, but trigonometry is explained from the start. A generous measure of examples and worked solutions is given throughout the text and exercises are given at the end of most chapters. For naval cadets and all students of sea navigation.

40/- net.

SIR ISAAC PITMAN & SONS LTD.

Parker Street, Kingsway, London, W.C.2.

DIFFERENT SHIPS— DIFFERENT LONG SPLICES

— *but only one Navigators Insurance*

The obvious and appropriate Company for the insurance of the property and liabilities of all professional and amateur NAVIGATORS.

Founded in 1921 under the chairmanship of the late Admiral Sir John Franklin Parry, K.C.B., Navigators and General specialise in the Insurance requirements of all who are or were connected with the sea. We have added interest in their insurance problems in that the majority of our executive staff served, at one time, in the Royal Navy or Royal Merchant Navy. We offer impeccable security and are renowned for prompt and generous settlement of claims.

Classes of business transacted include:

Fire, Accident, Marine	Yachts and Motor Boats
Personal Effects (Ashore, Afloat and Airborne)	Pilot's Public Liability
Navigator's Indemnity (Sea and Air)	Aircraft (Hull and Cargo)

Consult your Broker or write for particulars :

**THE NAVIGATORS AND GENERAL
INSURANCE COMPANY LIMITED**

15/16 CULLUM STREET, LIME STREET, LONDON, E.C.3

Telephone: MANsion 2121

Telegrams: Avigatinsu Fen London

• **Burton's**
 • **Four-**
 • **Figure**
 • **Navigation**
 • **Tables**
 •

• • • • •
 • **New Edition (3rd)**

• With this small set of Tables all sights are worked by the
 • identical processes as are used with the NAUTICAL TABLES.
 • Longitude, St. Hiliare, Ex-meridian, Azimuth & G.C. by ABC,
 • Vertical sextant angles. There is nothing missing (25 tables in
 • all). The DIFFERENCE is—that sights, etc., are worked in
 • about 25% less time, with the chances of arithmetical mistakes
 • creeping in just about HALVED!

• 148 pages 10½" × 6½" Board covers, 16s. 6d. net

• From all nautical booksellers

• Prospectus from the distributors

• **George Philip and Son Ltd**

• 30—32 Fleet Street, London, E.C.4

THE USE OF RADAR AT SEA

A comprehensive handbook for the Navigator

Royal 8vo.

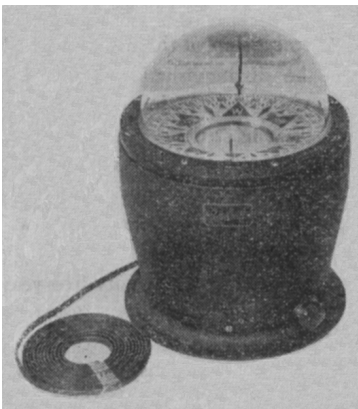
270 pp.

30s.

Published for THE INSTITUTE OF NAVIGATION by

HOLLIS & CARTER

25 Ashley Place, London, S.W.1.



The
Sestrel

UNIVERSAL MAJOR COMPASS

*The steadiest yet devised—for
 Motor and Large Sailing Yachts*

Brass binnacle fitted with Sestrel "Universal" transparent liquid compass, filled with low-drag damping fluid. Perspex magnifying dome top gives apparent card diameter of 6". Internal gimbaling. Built-in corrector box. Remote rheostat control.

HENRY BROWNE & SON, LTD.
 BARKING ESSEX

Sales Dept. & Service Depot:

71 LEADENHALL STREET, LONDON, E.C.3

Telephone: Sales, AVE 6066; Service, AVE 2156

GEOGRAPHICAL SERIALS

in the Library of the

ROYAL GEOGRAPHICAL SOCIETY

An alphabetical list of titles of all Geographical periodicals in the Society's Library, whether current or not. Some five hundred titles are listed, and the extent of the Library's holding for each item is briefly indicated.

Duplicated copies of this list can be obtained from the Office of the Society, price 2s. 6d. post free.

THE INSTITUTE OF NAVIGATION

THE OBJECT of the Institute is to unite in one body those who are concerned with or who are interested in the science and art of navigation. Membership is not restricted to those who hold professional qualifications, but is open to others who wish to further the aims of the Institute.

By coordinating the knowledge and achievements of marine and air navigators, scientists and those associated with the development and production of navigational equipment, the work of the Institute is directed towards raising the standard of navigation. In the field of education it is the aim of the Institute to bring practical navigators into contact with teachers and research workers to increase a common appreciation of the issues involved. It is an object of the Institute to encourage research in equipment and methods; through its publications it gives a wide circulation to original work on navigation so that new developments and suggestions can be appreciated by those most directly concerned with them.

The activities of the Institute include the holding of monthly meetings to discuss specific problems, the publication of a Journal and of other works concerned with different aspects of navigation, and all such activities as the Council may deem necessary to promote knowledge in navigation and its associated sciences.

The *Journal of the Institute of Navigation* is issued free each quarter to all members and contains a full account of the Institute's proceedings. It prints the papers which are presented at meetings, together with their ensuing discussion, and other original papers contributing to the science of navigation. It also contains a record of current navigational work, reviews of important books, and general papers of interest to navigators and those with similar interests.

The work of the Institute is coordinated with that of similar societies abroad, and in particular with the work of the United States and Commonwealth Institutes of Navigation, whose proceedings are available to members.

Membership. There are five classes of membership of the Institute:

(1) **HONORARY MEMBERS**, who shall be distinguished persons upon whom the Council may see fit to confer an honorary distinction.

(2) **FELLOWS**, who shall be members, of at least three years' standing, holding certain qualifications laid down in the by-laws; these qualifications include having made a contribution of value to navigation.

(3) **MEMBERS**, who shall be persons over twenty-one years of age who can satisfy the Council of their interest in navigation.

(4) **STUDENT MEMBERS**, who shall be persons under twenty-five years of age studying at a recognized school or university with a view to making navigation, or an allied interest, their career.

(5) **CORPORATE MEMBERS**, who shall be companies, universities, navigation schools, government departments and other organizations, here and abroad, who are directly or indirectly interested in the science of navigation. Corporate Members are entitled to send representatives to all Institute meetings and to receive six copies of all publications. They are encouraged to take an active part in the Institute's work. Application should be by letter addressed to the Executive Secretary.

Subscriptions. Annual subscriptions to the Institute are payable in advance as follows:

Members and Fellows	Two guineas
Student Members	Half a guinea
Corporate Members	Twenty guineas

The Institute's financial year begins on 1 July. Members in any category who are elected after 1 January in any year are only due for one half of their subscription until 1 July, when the full subscription for the next year becomes due.