

Changes in regional brain monoaminergic activity and temporary down-regulation in stress response from dietary supplementation with L-tryptophan in Atlantic cod (*Gadus morhua*)

Dean Basic^{1*}, Joachim Schjolden¹, Åshild Krogdahl², Kristine von Krogh¹, Marie Hillestad³, Svante Winberg⁴, Ian Mayer¹, Eystein Skjerve⁵ and Erik Höglund⁶

¹Department of Basic Sciences and Aquatic Medicine, Norwegian School of Veterinary Science, PO Box 8146 Dep, 0033 Oslo, Norway

²Aquaculture Protein Centre, Norwegian School of Veterinary Science, PO Box 8146 Dep, 0033 Oslo, Norway

³BioMar AS, Nordre gate 11, 7011 Trondheim, Norway

⁴Department of Neuroscience, Physiology, Uppsala Biomedical Centre, Uppsala University, PO Box 593, 751 24 Uppsala, Sweden

⁵Centre for Epidemiology and Biostatistics, Norwegian School of Veterinary Science, PO Box 8146 Dep, 0033 Oslo, Norway

⁶Department of Marine Ecology and Aquaculture, North Sea Center, Danish Institute for Fisheries Research, PO Box 101, DK-9850 Hirtshals, Denmark

(Submitted 20 April 2012 – Final revision received 17 August 2012 – Accepted 20 August 2012 – First published online 2 November 2012)

Abstract

The brain monoamines serotonin (5-hydroxytryptamine; 5-HT) and dopamine (DA) both play an integrative role in behavioural and neuroendocrine responses to challenges, and comparative models suggest common mechanisms for dietary modulation of transmission by these signal substances in vertebrates. Previous studies in teleosts demonstrate that 7 d of dietary administration with L-tryptophan (Trp), the direct precursor of 5-HT, suppresses the endocrine stress response. The present study investigated how long the suppressive effects of a Trp-enriched feed regimen, at doses corresponding to two, three or four times the Trp levels in commercial feed, last in juvenile Atlantic cod (*Gadus morhua*) when the fish are reintroduced to a diet with standard amino acid composition. We also wanted to determine whether Trp supplementation induced changes in brain monoaminergic neurochemistry in those forebrain structures innervated by DA- and 5-HTergic neurons, by measuring regional activity of DA and 5-HT in the lateral pallial regions (DL) of the telencephalon and nucleus lateralis tuberis (NLT) of the hypothalamus. Dietary Trp resulted in a dose-dependent suppression in plasma cortisol among fish exposed to confinement stress on the first day following experimental diet; however, such an effect was not observed at 2 or 6 d after Trp treatment. Feeding the fish with moderate Trp doses also evoked a general increase in DA and 5-HT-ergic activity, suggesting that these neural circuits within the NLT and DL may be indirectly involved in regulating the acute stress response.

Key words: L-Tryptophan: Atlantic cod: Stress response: Nucleus lateralis tuberis: Lateral pallial telencephalon

The monoamines serotonin (5-hydroxytryptamine; 5-HT) and dopamine (DA) are important neurotransmitters/modulators involved in integration of the behavioural and neuroendocrine responses to stress^(1–4). Comparative models suggest common mechanisms for dietary modulation of release and transmission by these signal substances in vertebrates. For instance, it has been demonstrated that dietary supplementation with the essential amino acid L-tryptophan (Trp), the immediate

precursor of 5-HT, enhances brain serotonergic activity in teleosts^(5–8) and mammals, including man⁽⁹⁾. In general, the synthesis of central 5-HT depends largely on the plasma concentration ratio between Trp and other large neutral amino acids (LNAA), since they all enter the brain through the same carrier transporter located on the blood–brain barrier^(10,11). Once inside the neuron, Trp is transformed by tryptophan-5-hydroxylase (EC 1.14.16.4) into 5-hydroxytryptophan, which

Abbreviations: 1xTrp, control feed containing 0.47% L-tryptophan; 2xTrp, experimental feed containing 0.82% L-tryptophan; 3xTrp, experimental feed containing 1.14% L-tryptophan; 4xTrp, experimental feed containing 1.65% L-tryptophan; 5-HIAA, 5-hydroxyindoleacetic acid; 5-HT, 5-hydroxytryptamine (serotonin); DA, dopamine; DL, lateral pallial region of telencephalon; DOPAC, 3,4-dihydroxyphenylacetic acid; HPA, hypothalamic–pituitary–adrenocortical; HPI, hypothalamic–pituitary–interrenal; LNAA, large neutral amino acid; NLT, nucleus lateralis tuberis; TDO, tryptophan 2,3 dioxygenase; Trp, L-tryptophan.

* **Corresponding author:** Dean Basic, email dean.basic@nvh.no

subsequently is decarboxylated to 5-HT by aromatic L-amino acid decarboxylase (*EC* 4.1.1.28)^(12,13). Furthermore, among the LNAA competing with Trp for access into the brain is tyrosine. This amino acid is the precursor of the catecholamine DA, and it has been suggested that Trp may influence central DA activity through this mechanism⁽⁷⁾.

Dietary manipulations of the ratio between Trp and other LNAA have been used to investigate the involvement of central 5-HT in the regulation of appetite, aggressive behaviour, and the neuroendocrine stress response in mammals, including human subjects as well as in comparative vertebrate models, such as fish^(5,14,15). Studies in rainbow trout (*Oncorhynchus mykiss*) have shown that dietary Trp enrichment suppresses aggressive behaviour as well as the neuroendocrine stress response^(6,8). Furthermore, Lepage *et al.*⁽⁷⁾ observed that the attenuation in stress response appeared to be time-specific; rainbow trout displayed lower plasma cortisol concentrations after 7 d of treatment with Trp-enriched feed, effects which were not evident when the experimental diet regimen lasted for 3 or 28 d^(6,7). Compensatory mechanisms, such as up-regulation of Trp-catabolising enzymes, have been suggested to prevent a long-term effect, when dietary treatment with Trp is extended beyond 7 d⁽⁷⁾. For instance, tryptophan 2,3 dioxigenase (*EC* 1.13.11.11; TDO) plays an important role as a house-keeping enzyme in the regulation of circulating levels of Trp⁽¹⁶⁾. Still, it is currently unknown for how long the stress-reducing effect of a 7 d regimen with Trp supplementation lasts if the fish are reintroduced to a diet with standard amino acid composition.

Generally, during stressful situations, there is a positive correlation between brain 5-HT activity and circulating glucocorticoids, the endproduct in the hypothalamic–pituitary–adrenocortical (HPA; mammals) or hypothalamic–pituitary–interrenal (HPI; teleosts) axis^(1,17). Thus, the observation that Trp supplementation stimulates 5-HT production and simultaneously suppresses HPA or HPI axis responsiveness may seem contradictory in this regard. However, as mentioned above, the suppression in the stress-induced release of cortisol became apparent only after 7 d of dietary Trp pre-treatment, suggesting an indirect effect of increased 5-HT signalling⁽⁷⁾. Interestingly, repeated daily administration with selective 5-HT reuptake inhibitors have been reported to exert similar effects as Trp supplementation on HPA or HPI axis reactivity among rodents and fish, implying common mechanisms such as changes in 5-HTergic receptor expression and/or sensitivity for both treatments^(18,19). Studies in rainbow trout have also shown that Trp supplementation attenuates the stress-induced elevation of plasma adrenocorticotrophic hormone levels, indicating that the stress-reducing effects of Trp may be mediated by mechanisms upstream in the HPI axis⁽⁷⁾. In teleosts, the nucleus lateralis tuberis (NLT) in the hypothalamus is innervated by DA and 5-HT fibres, containing corticotrophin-releasing factor-, DA- and 5-HT-producing cells that project down to the pituitary^(20–22). However, the extent to which the stress-reducing effects of Trp act on this level of the HPI axis has still not been thoroughly described. Moreover, in mammals the limbic system in the forebrain is involved in the control of HPA axis activity (for more

information, see reviews by Feldman *et al.*⁽²³⁾ and Jacobson & Sapolsky⁽²⁴⁾). Although different developmental patterns in the forebrain early in ontogeny restrict comparative studies between teleosts and mammals, recent findings indicate that the lateral pallial regions (DL) of the telencephalon may correspond to the mammalian hippocampus⁽²⁵⁾. Furthermore, studies in rainbow trout suggest that these telencephalic regions elicit an inhibitory action on the neuroendocrine stress response⁽²⁶⁾. However, it remains to be determined whether the stress-reducing effects of Trp are reflected in changes in DA and 5-HT neurochemistry in these brain areas.

In view of the above, the aims of the present study were to: (1) investigate if the stress-reducing effect, as measured by plasma cortisol levels, of dietary Trp supplementation persists after switching back to standard feed with normal amino acid composition; and (2) evaluate whether DA and 5-HT activity in the NLT and DL are involved in mediating these endocrine effects in juvenile Atlantic cod (*Gadus morhua*). A putative dampening effect of dietary Trp on cortisol responses to stress may potentially be put to practical use in fish-farming conditions (for example, during transport, vaccination and sorting).

Materials and methods

Experimental animals

The experimental animals used in the present study were 1-year-old juvenile farmed Atlantic cod. During spring 2007, approximately 1200 cod were purchased from the commercial aquaculture company Marine Harvest AS, and transported to the aquarium facility at Solbergstrand Marine Research Station. At the beginning of the experiment the fish weight varied between 51 and 149 g (mean 91.8 (SEM 0.9) g; *n* 182). Before the experiment, the fish were kept in two 1 m³ indoor holding tanks at a density of approximately 45 kg/m³ for approximately 1 month. The tanks were continuously supplied (30 litres/min) with ambient seawater obtained from a depth of 60 m (Oslo fjord). The temperature varied between 7 and 12 °C (mean 8.6 (SEM 0.1) °C), while the salinity varied between 33.6 and 35.3 ‰ (mean 34.3 (SEM 0.03) ‰) during the experimental period, and the pH remained stable at about 8.0. The light–dark (L:D) regimen was automatically controlled and adjusted to conditions at latitude 59°N (Oslo, Norway). While the fish were in the holding tanks, they were manually fed with commercial cod pellets (BioMar, 4 mm) at approximately 1% of their body mass per d. The experiment was conducted in accordance with the Norwegian animal welfare act, and approved by the Norwegian experimental animals committee (FDU).

Experimental conditions

The experimental environment used in the present study consisted of thirty-six identical glass aquaria (40 litres), each divided into two compartments, continuously supplied (0.5 litres/min) with ambient sea water and equipped with tightly fitted transparent lids. The lids were equipped with

small holes (0.5 cm in diameter) through which food could be added to the aquaria. The water outlet was connected to pipes running outside the aquaria, which allowed for regulation of the water level (Fig. 1). A reduction in water level to 7 cm served as an acute confinement stressor for the individual fish. The L:D regimen was adjusted to the same conditions as for the period preceding the experiments.

A total of four different experimental feeds were prepared by the aquafeed company BioMar AS in Brande, Denmark, which had different levels of Trp in relation to the total amount of other LNAA. The four different feeds, specifically developed for cod, were identical in energetic value and differed only in Trp content: the control feed contained 0.47% Trp (1xTrp) and the experimental feeds contained 0.82% Trp (2xTrp), 1.14% Trp (3xTrp) and 1.65% Trp (4xTrp).

Experimental protocol

During July 2007, at the start of the experiment, fish (of approximate equal size) were randomly selected, weighed and quickly transferred to each of the seventy-two compartments within the thirty-six aquaria to obtain social isolation. In order to facilitate acclimatisation to their new environment, all fish were fed control feed for a period of 7 d. Subsequently fish were either fed 1xTrp, 2xTrp, 3xTrp or 4xTrp (n 4–19, see Figs. 4–6 for specific details regarding sample size) feed for 7 d, after which the fish were then again fed control feed (1xTrp) for 0, 1 or 5 d (see Fig. 1 for an overview of the set-up). Individual food intake was quantified once per d by

counting the number of pellets consumed. For quantification of food intake, individual fish were fed with one pellet at a time until the fish rejected three pellets in a row. To avoid possible bias induced by a insufficient treatment time with Trp⁽⁷⁾, fish that ate for less than 4 d during the 7 d period with experimental diet were omitted from the dataset. The fish were starved for 24 h during the phase comprising the reintroduction of control feed before sampling was initiated. Subsequently within this timeframe the fish were then sampled either directly (undisturbed groups) or after 30 min of confinement stress (lowering of water level; see Fig. 1) on the morning following the last day of feeding (1, 2 or 6 d post-experimental diet).

Sampling procedure

At sampling, individual fish were quickly anaesthetised (ethyl-*m*-aminobenzoate methanesulfonate (Benzocain); 500 mg/l) and a blood sample (approximately 0.6 ml) was collected from the caudal vessel using a syringe pre-treated with EDTA. Blood samples collected were immediately centrifuged (13 000 rpm; 4 °C; 2 min) and the plasma fractions were transferred to 1.5 ml Eppendorf tubes, and subsequently snap-frozen on dry ice. In the sampling sessions conducted at 1 d following the Trp treatment brains were also collected from the fish skulls, and embedded in Tissue-Tec (O.C.T. Compound, Sakura Finetek AS). Plasma samples and whole brains were stored at –70 °C for later analyses of cortisol levels and monoaminergic activity.

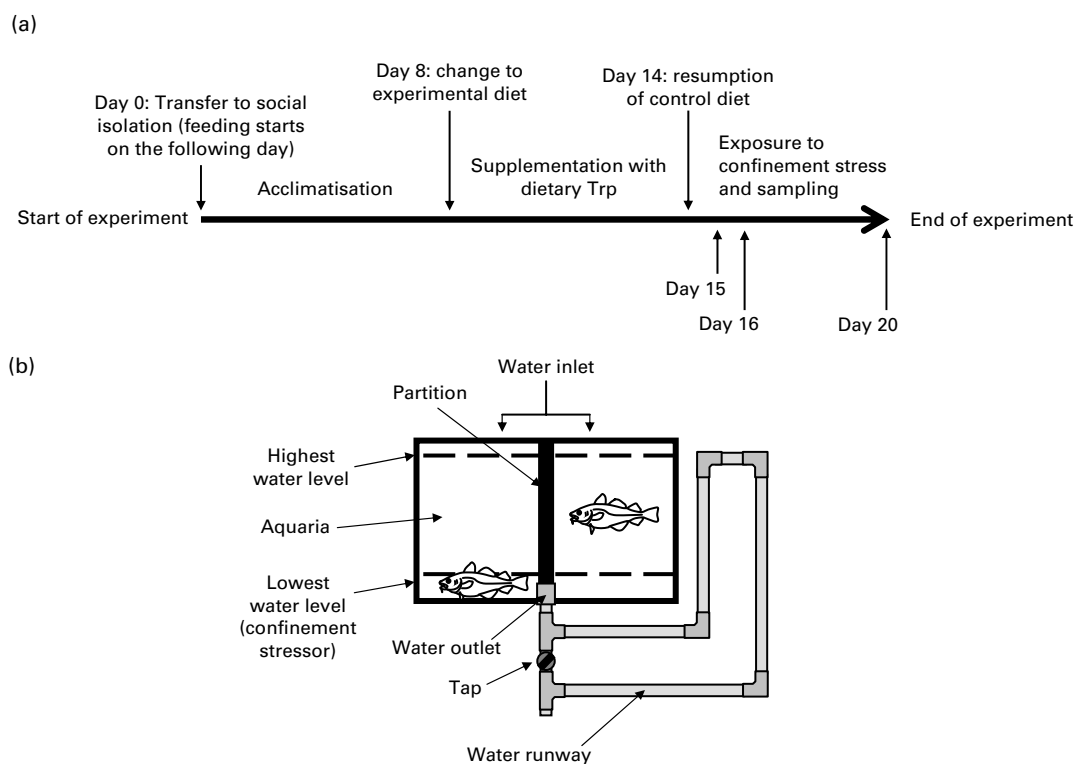


Fig. 1. (a) Overview of experiment design. Trp, L-tryptophan. (b) Illustration of the housing conditions; the water level indicates whether or not the fish is subjected to confinement.

Assays

The concentration of plasma cortisol in the samples was measured using a commercial ELISA kit (product no. 402710; Neogen Corp.). Plasma samples were diluted 1:100 in assay buffer and the samples processed according to the kit protocol. The enzyme reaction was terminated by adding 1 M-HCl, and subsequently the plates were read in a conventional plate reader at 450 nm (Vmax Microplate Reader; Molecular Devices). The percentage bound for each standard solution was used to generate a logarithmic curve. This curve was used to calculate the concentrations of plasma cortisol.

Before brain monoamine analysis, the brains were sectioned into 300 µm thick slices using a cryostat (PMV 450 MP; Palmstierna Mekaniska Verkstad) at -21°C. The slices were mounted on glass plates, and sections containing the lateral pallial parts of the telencephalon (DI) as well as the NLT were micro-dissected using the sharpened end of a level-cut syringe (0.5 mm in inner diameter) (Fig. 2). These two tissues were then each added to a 4% perchloric acid solution (200 µl) containing 0.26 g/l EDTA and 19.4 ng/ml epinin (deoxyepinin) as internal standard and mechanically homogenised using an Eppendorf pestle. Subsequently, the samples were centrifuged for 2 min at 30 000 g and 4°C. The supernatant fraction (100 µl) was used immediately to quantify concentrations of 5-HT, DA, 5-hydroxyindoleacetic acid (5-HIAA) and 3,4-dihydroxyphenylacetic acid (DOPAC), a major DA metabolite, by HPLC with electrochemical detection as described by Øverli *et al.*⁽²⁷⁾. Samples were quantified by comparison with standard solutions of known concentrations and corrected for recovery of the internal standard using HPLC software (CSW; DataApex Ltd). Analysis of actual levels, expressed as catabolite or monoamine content/total protein, was not possible due to the samples containing remaining proteins after supernatant fraction were lost. Instead, we used the ratio of the catabolite to its parent monoamine as an estimation of central

monoaminergic activity. This is commonly used as an index of monoaminergic activity especially when studying behaviour and stress^(28,29). Neurotransmitter ratios (5-HIAA:5-HT or DOPAC:DA) were calculated from the concentrations in each sample and presented as either serotonergic or dopaminergic activity.

Data treatment and statistics

All data were subjected to tabular and graphical examination and analysis in Microsoft Excel®, before being transferred to Stata SE/11 for Windows (StataCorp LP) for further statistical evaluation. The large variation in the results and variances between treatments made it difficult to find a suitable statistical approach to evaluate all observations in one statistical analysis. To overcome these problems, the analyses were therefore performed on data within each sampling time (i.e. days after Trp treatment), and for cortisol within unstressed and stressed fish. Due to lack of normality, the tests were run on log-transformed data for the cortisol results. For the monoamine data, log-transformation was not sufficient to achieve normal distribution, thus non-parametric methods were used to analyse these results. Effects on plasma cortisol were investigated using one-way ANOVA, whereas brain monoaminergic ratios were evaluated employing Kruskal–Wallis tests and quantile regression. A Spearman rank correlation test was used to assess correlations between the ratios of 5-HIAA:5-HT and DOPAC:DA, for each brain region. Results regarding plasma cortisol levels and monoamine ratios are presented as mean values with their standard errors and medians, respectively.

Results

Appetite

Feed intake increased steadily in all groups during the 7 d acclimatisation period preceding treatment with elevated

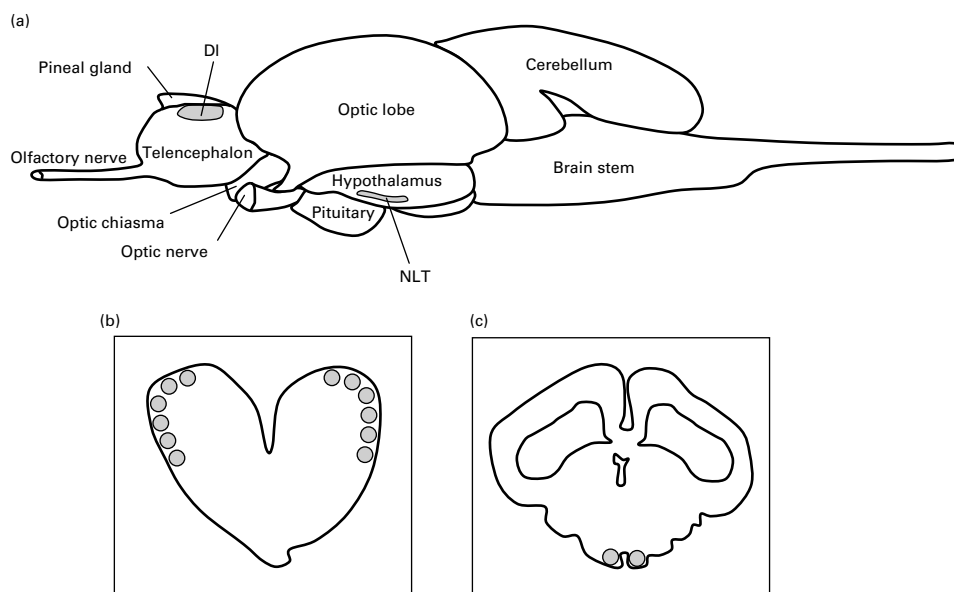


Fig. 2. Lateral view of the teleost brain (a) and cross-sections of regions analysed for monoaminergic activity: lateral pallial parts of telencephalon (DI) (b) and nucleus lateralis tuberis (NLT) (c), highlighted in grey.



Fig. 3. Daily feed intake in juvenile cod (*Gadus morhua*) over the course of the experiment: control feed containing 0.47% L-tryptophan (Trp) (1xTrp; ○—); experimental feed containing 0.82% Trp (2xTrp; □—); experimental feed containing 1.14% Trp (3xTrp; ▴—); experimental feed containing 1.65% Trp (4xTrp; ■—). Data are means, with standard errors represented by vertical bars. The arrows on days 15, 16 and 20 highlight when the confinement stressor was introduced. BW, body weight.

dietary Trp. On average the feed intake increased from 0.07% to 0.37% of their body weight during this period. After the acclimatisation period, feed intake continued to increase in all groups during both the experimental and post-experimental diet periods. Fish receiving the Trp-supplemented diets did not appear to differ in feed intake during the treatment period or after the reintroduction of commercial feed when compared with the control group (Fig. 3).

Stress response

As shown in Fig. 4, a dose-dependent decline in plasma cortisol levels was observed among stressed fish on day 1 after dietary Trp treatment was terminated (ANOVA; $P < 0.056$). The effect was no longer evident on day 2 ($P < 0.84$) and day 6 ($P < 0.11$). Unstressed fish showed low cortisol levels at all three sampling times and did not seem to be affected by Trp supplementation on day 1 ($P < 0.80$) or day 2 ($P < 0.19$), but some changes were observed on day 6 ($P < 0.007$) during which fish fed 4xTrp displayed a somewhat higher cortisol response than the group on the control diet.

Brain monoamine activity in nucleus lateralis tuberos and lateral pallial region of telencephalon

Initial graphical examination of regional brain monoamine activity, as indicated by the metabolite:neurotransmitter ratio, showed no visible effect of stress in either the NLT or DI on day 1 after termination of Trp treatment. Thus, stressed and undisturbed fish were pooled before subsequent statistical analysis was performed. The results are shown in Figs. 5 and 6 and reveal a curvilinear relationship on both monoamine ratios. Supplementation with Trp revealed an effect on the 5-HIAA:5-HT ratio in the DI (Kruskal–Wallis test: $P < 0.015$) and further analysis showed that this monoamine ratio was higher at moderate doses of dietary Trp supplementation (quantile regression: 2xTrp: $P < 0.032$; 3xTrp: $P < 0.047$; 4xTrp: $P < 0.132$) when compared against control feed. A similar pattern for the 5-HIAA:5-HT ratio was also observed in the NLT (Kruskal–Wallis test: $P < 0.01$) in which the effects seemed most pronounced at 3xTrp (quantile regression: 2xTrp: $P < 0.08$; 3xTrp: $P < 0.05$; 4xTrp: $P < 0.31$). While no clear effects of Trp supplementation were found on the

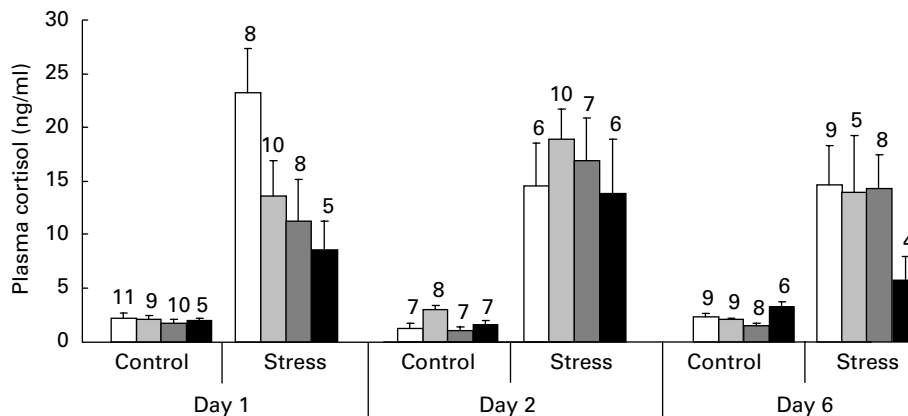


Fig. 4. Plasma cortisol levels in juvenile cod (*Gadus morhua*) following the reintroduction of control diet after 7 d on L-tryptophan (Trp) supplementation: control feed containing 0.47% Trp (1xTrp; □); experimental feed containing 0.82% Trp (2xTrp; ▤); experimental feed containing 1.14% Trp (3xTrp; ▥); experimental feed containing 1.65% Trp (4xTrp; ▦). Data are means, with standard errors represented by vertical bars. The values above the bars indicate the number of individual fish. ANOVA on stressed fish: day 1, $P < 0.056$; day 2, $P < 0.84$; day 6, $P < 0.11$. ANOVA on undisturbed fish: day 1, $P < 0.80$; day 2, $P < 0.19$; day 6, $P < 0.007$.

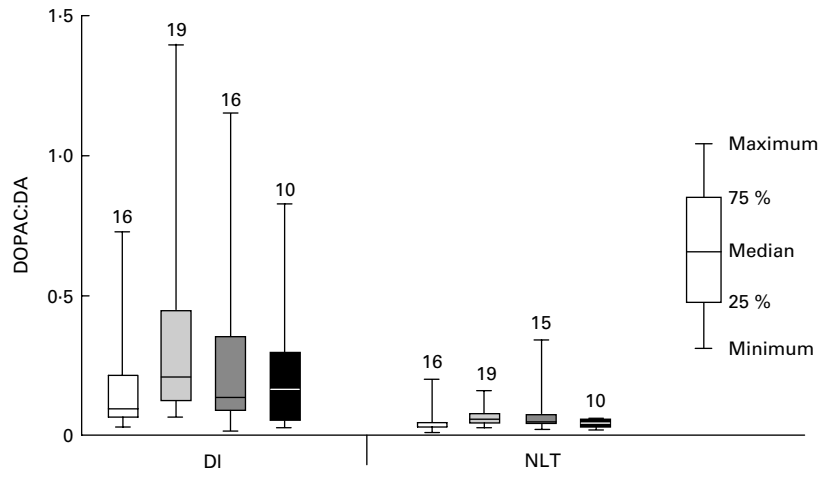


Fig. 5. Dopaminergic activity assessed by 3,4-dihydroxyphenylacetic acid:dopamine (DOPAC:DA) ratio in the lateral pallial telencephalon (DI) and nucleus lateralis tuberis (NLT) in juvenile cod (*Gadus morhua*) on day 1 after dietary L-tryptophan (Trp) supplementation was terminated: control feed containing 0.47% Trp (1xTrp; □); experimental feed containing 0.82% Trp (2xTrp; ◻); experimental feed containing 1.14% Trp (3xTrp; ◼); experimental feed containing 1.65% Trp (4xTrp; ◼). Results are presented as boxplots by pooling stressed and undisturbed fish. The values above the bars indicate the number of individual fish. Kruskal–Wallis test for DI: $P < 0.21$, quantile regression with comparison against 1xTrp; 2xTrp, $P < 0.08$; 3xTrp, $P < 0.48$; 4xTrp, $P < 0.28$. Kruskal–Wallis test for NLT: $P < 0.04$, quantile regression with comparison against 1xTrp; 2xTrp, $P < 0.02$; 3xTrp, $P < 0.17$; 4xTrp, $P < 0.27$.

DOPAC:DA ratio in the DI (Kruskal–Wallis test: $P < 0.21$; quantile regression: 2xTrp: $P < 0.08$; 3xTrp: $P < 0.48$; 4xTrp: $P < 0.28$), there was a significant elevation of this monoamine ratio in the NLT (Kruskal–Wallis test: $P < 0.04$). Further analysis revealed that supplementation with 2xTrp resulted in an increased DOPAC:DA ratio, an effect which was no longer apparent at higher doses of the amino acid (quantile regression: 2xTrp: $P < 0.02$; 3xTrp: $P < 0.17$; 4xTrp: $P < 0.27$).

A significant moderate correlation (R_s^2 0.33; $P < 0.015$) was found between the 5-HIAA:5-HT and DOPAC:DA ratios in the NLT, while there was only a trend (R_s^2 0.22; $P < 0.099$) in the DI.

Discussion

The present study showed a clear dose-dependent relationship between plasma cortisol and dietary levels of Trp at 1 d after termination of the experimental feed regimen, amongst fish subjected to confinement stress. However, the suppression in stress-induced cortisol response was no longer apparent on days 2 and 6 after the dietary treatment period, indicating that the effects of Trp supplementation are rather temporary. The observation that Trp treatment for 7 d resulted in decreased plasma cortisol levels suggests that this amino acid acts on the HPI axis stress reactivity in a similar way in

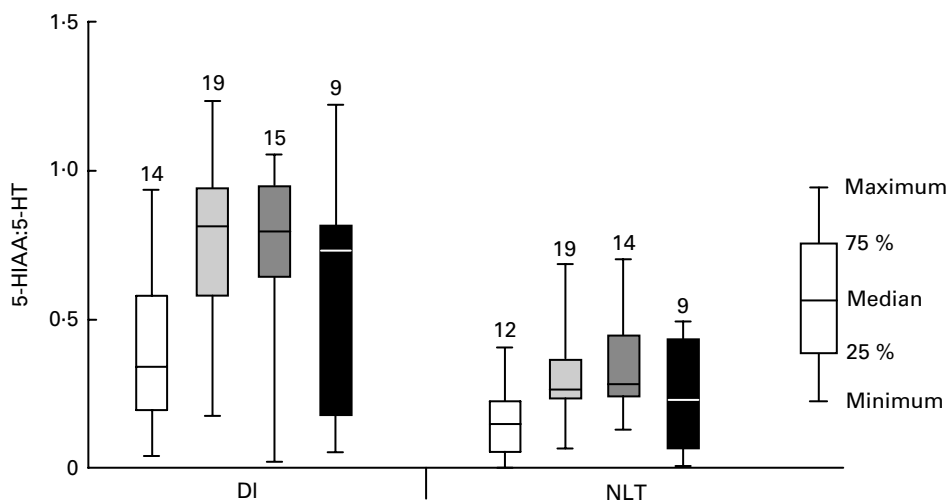


Fig. 6. Serotonergic activity assessed by 5-hydroxyindoleacetic acid:5-hydroxytryptamine (5-HIAA:5-HT) ratio in the lateral pallial telencephalon (DI) and nucleus lateralis tuberis (NLT) in juvenile cod (*Gadus morhua*) on day 1 after dietary L-tryptophan (Trp) supplementation was terminated: control feed containing 0.47% Trp (1xTrp; □); experimental feed containing 0.82% Trp (2xTrp; ◻); experimental feed containing 1.14% Trp (3xTrp; ◼); experimental feed containing 1.65% Trp (4xTrp; ◼). Results are presented as boxplots by pooling stressed and undisturbed fish. The values above the bars indicate the number of individual fish. Kruskal–Wallis test for DI: $P < 0.015$, quantile regression with comparison against 1xTrp; 2xTrp, $P < 0.032$; 3xTrp, $P < 0.047$; 4xTrp, $P < 0.13$. Kruskal–Wallis test for NLT: $P < 0.01$, quantile regression with comparison against 1xTrp; 2xTrp, $P < 0.08$; 3xTrp, $P < 0.05$; 4xTrp, $P < 0.31$.

Atlantic cod as previously reported in rainbow trout⁽⁶⁾. In that study, undisturbed trout also responded to Trp-enriched feed by a slight increase in basal plasma cortisol levels. In the present study, a similar effect was only seen at 6 d following termination of Trp supplementation, although the significance of this finding is difficult to explain and further studies are needed to verify whether it is an artifact or not.

The absence of changes in monoamine activity, estimated by the 5-HIAA:5-HT and DOPAC:DA ratios, stemming from confinement stress alone in the present results seems somewhat contradictory to the general consensus that an increase in central 5-HT activity is related to an activation of the neuroendocrine stress response^(6,17,27,30,31). However, the 5-HTergic response to stress has been shown to differ both temporally and regionally in a comparative animal model, the lizard *Anolis carolinensis*⁽³²⁾. This has also been demonstrated in rainbow trout where social stress induced different patterns in 5-HTergic activity between the DI and dorsomedial parts of the telencephalon⁽²⁶⁾. In the latter study, the authors suggested that the DI, which is functionally similar to the mammalian hippocampus, exerts an inhibitory effect on the cortisol stress response. However, the role of 5-HT in this brain region is relatively unknown in teleosts, and it is possible that the findings by Øverli *et al.*⁽²⁶⁾ specifically reflect social interaction (with regards to 5-HT activity in the DI) rather than just a general stress response.

In teleosts it has been shown that brain monoamines innervate the NLT^(20–22) and that there are corticotrophin-releasing factor-producing neurons within this nucleus that project down into the pituitary. Still, the actual function of these serotonergic fibres within this hypothalamic region has not been well described⁽³³⁾. Both the NLT and the pre-optic area have been suggested to be involved in the regulation of adrenocorticotrophic hormone⁽³⁴⁾. Furthermore, exposure to chronic stress has been shown to affect the corticotrophin-releasing factor cells in the NLT⁽²¹⁾, but it is possible that the endocrine response to acute stressors, such as confinement, is controlled by alternate pathways in other brain regions.

Independent of confinement stress, dietary supplementation of Trp affected 5-HT activity in both the DI and NLT in the present study. This seems to be in agreement with the findings of Höglund *et al.*⁽⁵⁾, who reported a general increase in brain 5-HT activity after 7 d of Trp treatment in cod. According to the present data, the largest changes in 5-HT activity were attributed to moderate doses of Trp, in which 5-HIAA:5-HT ratios were elevated compared with fish fed standard feed continuously. However, 5-HT activity appeared to regress towards control levels in both brain regions in those fish receiving the highest dose of dietary Trp (corresponding to four times the Trp content of the standard feed). Interestingly, the present results showed that DA activity in the NLT also appeared to be stimulated by Trp administration, albeit to a lesser extent than 5-HT activity, as judged by the trend in increased DOPAC:DA ratio. Although the general consensus is that Trp increases 5-HT activity, supplementation with this LNAA has previously been found to have no clear effects on either the 5-HIAA:5-HT or DOPAC:DA ratios, and only elevated 5-HIAA levels in the hypothalamus and optic tectum

after 7 d on experimental diet in rainbow trout^(6,7). In contrast, Winberg *et al.*⁽⁸⁾ reported increased levels of 5-HIAA as well as 5-HIAA:5-HT ratios in both the hypothalamus and brainstem, but not in the telencephalon in an experiment examining the effects on aggressive behaviour in rainbow trout receiving the same dietary Trp treatment. A possible explanation for the conflicting data between these two studies could be that the observed effects of Trp enrichment on brain 5-HT signalling are more pronounced when combined with other treatments, such as exposure to an acute stressor^(6,7) or social interactions⁽⁸⁾. Such differences in context may activate alternate neural pathways contributing to the inconsistencies in 5-HT signalling between the studies mentioned above. Nonetheless, our data indicate that 5-HTergic activity regresses towards control levels in fish receiving the highest dose of dietary Trp supplementation. Similar dietary levels of this amino acid have previously been shown to induce an inhibition of behavioural responses to social challenges, such as aggression towards an intruder⁽⁸⁾ and attenuation of the anorectic response to novelty⁽¹⁵⁾ in salmonid fish. The observation that 5-HT activity approached control levels in both the DI and NLT in fish receiving the highest Trp dose makes it tempting to interpret that this reflects such suppressive effects on responses to acute challenges. However, the functional roles of these brain regions, with regards to monoaminergic activity, in regulating behavioural and endocrine responses to acute challenges still remain largely unknown in teleosts. It should also be noted that in the present study we were only able to quantify monoaminergic activity as the catabolite:parent monoamine ratio, and it is possible that actual levels of monoamines and their catabolites could have revealed other effects on monoaminergic signalling within the same context.

In humans, reducing the synthesis of central 5-HT (by depriving the brain of Trp) can induce depression and anxiety-related disorders^(35,36). Despite this, the potency of Trp supplementation as an antidepressant has a rather narrow therapeutic window (for a review, see Shaw *et al.*⁽³⁷⁾). It is well known that the endogenous amount of Trp, available for 5-HT synthesis, is regulated by Trp-catabolising enzymes such as TDO. This enzyme is activated not only by its substrate Trp, but can also be triggered by glucocorticoids^(38,39). Providing excess exogenous Trp stimulates the activity of TDO, enhancing conversion of this amino acid into kynurenin; thus leaving less Trp available for 5-HT synthesis and subsequent neurotransmission. While extensively studied in mammals, there is less information in the literature when it comes to TDO regulation of Trp in teleost fish. It is possible that the lack of effects on the endocrine stress response in the present study (i.e. at days 2 and 6 after dietary Trp supplementation) may somehow be reflected by changes in the catabolic activity of TDO. However, Walton *et al.*⁽⁴⁰⁾ observed no alterations in the activity of this enzyme in rainbow trout when given different levels of dietary Trp. A similar lack in effect has also been reported in channel catfish (*Ictalurus punctatus*), in which repeated doses of either dietary Trp or adrenocorticotrophic hormone or three doses of glucocorticoids failed to induce hepatic TDO⁽⁴¹⁾. Clearly, this topic needs to be addressed in future studies, taking into account

other Trp-catabolising enzymes involved in the kynurenin pathway as well.

In conclusion, pretreatment with Trp-enriched feed for 7 d resulted in a dose-dependent reduction on post-stress plasma cortisol levels, confirming the observation that dietary Trp supplementation can suppress the endocrine response in Atlantic cod, as previously documented in rainbow trout^(6,7). The attenuation in stress response was no longer evident at 2 or 6 d following the termination of Trp administration, indicating a rather short time window for the stress-reducing effect of this amino acid. Concomitant with the temporary decrease in endocrine response, moderate dietary doses of Trp, containing two to three times the levels of commercial feed, acted stimulatory in general on both brain serotonergic and dopaminergic (to lesser extent) activity. However, this effect appeared to return towards control levels, as determined from monoamine ratios, at a dietary Trp dose corresponding to four times the content in commercial feed. In light of a previous study which reported a suppression in aggressive behaviour in rainbow trout at similar Trp doses⁽⁸⁾, the present data may indicate that the brain regions NLT and DI potentially elicit an inhibitory effect on the behavioural responses to social challenges. However, the finding that monoaminergic activity was unaffected by acute stress might also reflect alternative roles for these two brain regions, such as partial participation in suppression on the endocrine stress response. On an applied level, further studies are required to assess whether dietary Trp can be used as a potential nutritional strategy in aquaculture conditions.

Acknowledgements

The present study was supported and funded by BioMar AS and the Norwegian Research Council. We would like to thank the staff at Solbergstrand Station for providing us with the facilities for this experiment. D. B. conducted the study, carried out the cortisol analysis, was involved in analysis/interpretation of the data and wrote substantial parts of the manuscript. J. S. was involved in planning/designing of the study, interpretation of data and in writing the manuscript, built the experimental set-up and conducted the study. S. W. was involved in planning/designing of the study, interpretation of data and in writing the manuscript. Å. K. was involved in analysis/interpretation of data and the manuscript review. E. S. evaluated the statistical methods and performed the data analysis, was involved in interpretation of data and manuscript review. K. v. K. carried out the monoamine analysis and was involved in the manuscript review. M. H. was involved in planning/designing of the study, interpretation of data and the manuscript review. I. M. was involved in planning/designing of the study and the manuscript review. E. H. was involved in planning/designing of the study, analysis/interpretation of data and in writing the manuscript. The authors declare no conflict of interest.

References

1. Chaouloff F (1993) Physiopharmacological interactions between stress hormones and central serotonergic systems. *Brain Res Rev* **18**, 1–32.

2. Dinan TG (1996) Serotonin and the regulation of hypothalamic-pituitary-adrenal axis function. *Life Sci* **58**, 1683–1694.
3. Summers CH, Summers TR, Moore MC, *et al.* (2003) Temporal patterns of limbic monoamine and plasma corticosterone response during social stress. *Neuroscience* **116**, 553–563.
4. Höglund E, Kolm N & Winberg S (2001) Stress-induced changes in brain serotonergic activity, plasma cortisol and aggressive behavior in Arctic charr (*Salvelinus alpinus*) is counteracted by l-DOPA. *Physiol Behav* **74**, 381–389.
5. Höglund E, Bakke MJ, Øverli Ø, *et al.* (2005) Suppression of aggressive behaviour in juvenile Atlantic cod (*Gadus morhua*) by l-tryptophan supplementation. *Aquaculture* **249**, 525–531.
6. Lepage O, Tottmar O & Winberg S (2002) Elevated dietary intake of l-tryptophan counteracts the stress-induced elevation of plasma cortisol in rainbow trout (*Oncorhynchus mykiss*). *J Exp Biol* **205**, 3679–3687.
7. Lepage O, Vilchez IM, Pottinger TG, *et al.* (2003) Time-course of the effect of dietary l-tryptophan on plasma cortisol levels in rainbow trout *Oncorhynchus mykiss*. *J Exp Biol* **206**, 3589–3599.
8. Winberg S, Overli O & Lepage O (2001) Suppression of aggression in rainbow trout (*Oncorhynchus mykiss*) by dietary l-tryptophan. *J Exp Biol* **204**, 3867–3876.
9. Markus CR, Verschoor E, Firk C, *et al.* (2010) Effect of tryptophan-rich egg protein hydrolysate on brain tryptophan availability, stress and performance. *Clin Nutr* **29**, 610–616.
10. Curzon G (1986) Effects of food intake on brain transmitter amine precursors and amine synthesis. In *Psychopharmacology and Food*, vol. 8, pp. 59–70 [M Sandler and T Silverstone, editors]. Oxford: Oxford University Press.
11. Fernstrom JD (1990) Aromatic amino acids and monoamine synthesis in the central nervous system: influence of the diet. *J Nutr Biochem* **1**, 508–517.
12. Leathwood PD (1987) Tryptophan availability and serotonin synthesis. *Proc Nutr Soc* **46**, 143–156.
13. Fernstrom JD & Wurtman RJ (1997) Brain serotonin content: physiological regulation by plasma neutral amino acids. 1971 [reprinted]. *Obes Res* **5**, 377–380.
14. Markus CR, Olivier B, Panhuysen GEM, *et al.* (2000) The bovine protein α -lactalbumin increases the plasma ratio of tryptophan to the other large neutral amino acids, and in vulnerable subjects raises brain serotonin activity, reduces cortisol concentration, and improves mood under stress. *Am J Clin Nutr* **71**, 1536–1544.
15. Höglund E, Sørensen C, Bakke MJ, *et al.* (2007) Attenuation of stress-induced anorexia in brown trout (*Salmo trutta*) by pre-treatment with dietary l-tryptophan. *Br J Nutr* **97**, 786–789.
16. Smith SA & Pogson CI (1980) The metabolism of l-tryptophan by isolated rat liver cells. Effect of albumin binding and amino acid competition on oxidation of tryptophan by tryptophan 2,3 dioxygenase. *Biochem J* **186**, 977–986.
17. Winberg S & Lepage O (1998) Elevation of brain 5-HT activity, POMC expression, and plasma cortisol in socially subordinate rainbow trout. *Am J Physiol* **43**, R645–R654.
18. Lepage O, Larson ET, Mayer I, *et al.* (2005) Serotonin, but not melatonin, plays a role in shaping dominant-subordinate relationships and aggression in rainbow trout. *Horm Behav* **48**, 233–242.
19. Jensen JB, Jessop DS, Harbuz MS, *et al.* (1999) Acute and long-term treatments with the selective serotonin reuptake inhibitor citalopram modulate the HPA axis activity at different levels in male rats. *J Neuroendocrinol* **11**, 465–471.

20. Corio M, Peute J & Steinbusch HWM (1991) Distribution of serotonin- and dopamine-immunoreactivity in the brain of the teleost *Clarias gariepinus*. *J Chem Neuroanat* **4**, 79–95.
21. Norris DO, Felt SB, Woodling JD, *et al.* (1997) Immunocytochemical and histological differences in the interrenal axis of feral brown trout, *Salmo trutta*, in metal-contaminated waters. *Gen Comp Endocr* **108**, 343–351.
22. Rao PDP, Job TC & Schreibman MP (1993) Hypophysiotropic neurons in the hypothalamus of the catfish *Clarias batrachus*: a cobaltous lysine and HRP study. *Brain Behav Evol* **42**, 24–38.
23. Feldman S, Conforti N & Weidenfeld J (1995) Limbic pathways and hypothalamic neurotransmitters mediating adrenocortical responses to neural stimuli. *Neurosci Biobehav Rev* **19**, 235–240.
24. Jacobson L & Sapolsky R (1991) The role of the hippocampus in feedback regulation of the hypothalamic-pituitary-adrenocortical axis. *Endocr Rev* **12**, 118–134.
25. Portavella M & Vargas JP (2005) Emotional and spatial learning in goldfish is dependent on different telencephalic pallial systems. *Eur J Neurosci* **21**, 2800–2806.
26. Øverli Ø, Korzan WJ, Larson ET, *et al.* (2004) Behavioral and neuroendocrine correlates of displaced aggression in trout. *Horm Behav* **45**, 324–329.
27. Øverli Ø, Harris CA & Winberg S (1999) Short-term effects of fights for social dominance and the establishment of dominant-subordinate relationships on brain monoamines and cortisol in rainbow trout. *Brain Behav Evol* **54**, 263–275.
28. Summers CH (2001) Mechanisms for quick and variable responses. *Brain Behav Evol* **57**, 283–292.
29. Shannon NJ, Gunnet JW & Moore KE (1986) A comparison of biochemical indices of 5-hydroxytryptaminergic neuronal activity following electrical stimulation of the dorsal raphe nucleus. *J Neurochem* **47**, 958–965.
30. Höglund E, Balm PHM & Winberg S (2000) Skin darkening, a potential social signal in subordinate Arctic charr (*Salvelinus alpinus*): the regulatory role of brain monoamines and pro-opiomelanocortin-derived peptides. *J Exp Biol* **203**, 1711–1721.
31. Winberg S & Nilsson GE (1993) Roles of brain monoamine neurotransmitters in agonistic behavior and stress reactions, with particular reference to fish. *Comp Biochem Phys C* **106**, 597–614.
32. Summers CH, Larson ET, Summers TR, *et al.* (1998) Regional and temporal separation of serotonergic activity mediating social stress. *Neuroscience* **87**, 489–496.
33. Lilleaar C (2011) The serotonergic system in fish. *J Chem Neuroanat* **41**, 294–308.
34. Fryer JN & Peter RE (1977) Hypothalamic control ACTH secretion in goldfish. II. hypothalamic lesioning studies. *Gen Comp Endocrinol* **33**, 202–214.
35. Delgado PL, Charney DS, Price LH, *et al.* (1990) Serotonin function and the mechanism of antidepressant action. Reversal of antidepressant-induced remission by rapid depletion of plasma tryptophan. *Arch Gen Psychiatry* **47**, 411–418.
36. Neumeister A, Turner EH, Matthews JR, *et al.* (1998) Effects of tryptophan depletion vs. catecholamine depletion in patients with seasonal affective disorder in remission with light therapy. *Arch Gen Psychiatry* **55**, 524–530.
37. Shaw KA, Turner J & Del Mar C (2002) Tryptophan and 5-hydroxytryptophan for depression. *Cochrane Database of Systematic Reviews* issue 1, CD003198. <http://www.mrw.interscience.wiley.com/cochrane/clsystrev/articles/CD003198/frame.html>
38. Gál EM & Sherman AD (1980) L-Kynurenine: its synthesis and possible regulatory function in brain. *Neurochem Res* **5**, 223–239.
39. Rubin RT (1967) Adrenal cortical activity changes in manic-depressive illness. Influence on intermediary metabolism of tryptophan. *Arch Gen Psychiatry* **17**, 671–679.
40. Walton MJ, Coloso RM, Cowey CB, *et al.* (1984) The effects of dietary tryptophan levels on growth and metabolism of rainbow trout (*Salmo gairdneri*). *Br J Nutr* **51**, 279–287.
41. Brown J & Dodgen CL (1968) Fish liver tryptophan pyrrolase: apparent absence of both hormonal regulation and substrate induction. *Biochim Biophys Acta* **165**, 463–469.