


Regular Article

The synergistic effect of genetic and environmental factors in the development of attention-deficit/hyperactivity disorder symptoms in children and adolescents

Douglas Teixeira Leffa^{1,2} , Arthur Caye^{1,2}, Sintia I. Belangero^{3,4}, Ary Gadelha⁴, Pedro Mario Pan⁵, Giovanni Abrahão Salum^{2,6} and Luis Augusto Rohde^{1,2,7}

¹ADHD Outpatient Program & Development Psychiatry Program, Hospital de Clínicas de Porto Alegre, Porto Alegre, Brazil, ²Department of Psychiatry, Universidade Federal do Rio Grande do Sul, Porto Alegre, Brazil, ³Genetics Division, Department of Morphology and Genetics, Universidade Federal de São Paulo, São Paulo, Brazil, ⁴Laboratory of Integrative Neuroscience (LiNC), Department of Psychiatry, Universidade Federal de São Paulo, São Paulo, Brazil, ⁵National Institute of Developmental Psychiatry for Children and Adolescents, São Paulo, Brazil, ⁶Section on Negative Affect and Social Processes, Hospital de Clínicas de Porto Alegre, Porto Alegre, Brazil and ⁷Advisory council, Medical School, UNIEDUK, Indaiatuba, Brazil

Abstract

Gene-environment interactions (GxE) have been increasingly explored in psychiatry but with low replication rates. Attention-deficit/hyperactivity disorder (ADHD) is a suitable candidate for studying GxE due to its high heritability and well-defined environmental risk factors. Here, we explored GxE using polygenic risk score (PRS) to represent the genetic liability to ADHD (ADHD-PRS) and environmental risk score (ERS) to represent the combined effects of environmental risk factors. We analyzed longitudinal data of 2,046 individuals (6–14 years of age at baseline and 14–23 at the last follow-up) from the Brazilian High-Risk Cohort Study for Psychiatric Disorders. Psychiatric evaluation included the Child Behavior Checklist and the Strength and Difficulties Questionnaire. Statistical analyses were performed using mixed-effects models. We observed statistically significant interactions between ADHD-PRS and ERS, suggesting that environmental and genetic factors act synergistically in the development of ADHD symptoms. These effects were not present for depression or anxiety symptoms. No evidence of GxE correlation was detected. Mechanistically, our findings suggest that environmental stressors modulate the genetic risk for ADHD. Future studies should investigate whether the reduction of environmental risks can prevent the development of symptoms of ADHD, especially in children with a family history of the disorder.

Keywords: ADHD; environment; epidemiology; genetics; risk factors

(Received 5 July 2022; revised 12 March 2023; accepted 13 March 2023; first published online 24 April 2023)

Introduction

Psychiatric disorders are characterized by heterogeneous clinical phenotypes thought to emerge from varied interconnected underlying pathophysiological mechanisms rather than monocausal pathways (Kendler, 2019). Evidence suggests that environmental and genetic factors are critical determinants of mental health and behavior (Smoller et al., 2019). Moreover, the idea that environmental stressors could interact with hereditary predispositions in developing psychiatric conditions, the diathesis-stress model, has been debated for centuries (Kendler, 2020). More recently, this topic has been extensively explored in gene-environment interaction (GxE) studies. GxE studies aim to explore latent interactive effects between gene markers and environmental influences primarily to (1) provide insights into the etiology of the disease, (2) improve predictive models, and (3) identify subgroups more

susceptible to environmental influences (McAllister et al., 2017). Although GxE studies have had a tremendous impact on the psychiatric literature, low replication rates have cast doubts to what extent these findings are valid (Border et al., 2019; Duncan & Keller, 2011). Inherently low statistical power in the candidate gene and candidate environment approach and challenges in the definition of environmental risk factors are among the reasons suggested to contribute to low replication rates (Duncan & Keller, 2011; McAllister et al., 2017). Of note, the idea that psychiatric disorders are associated with aggregate environmental risk factors, rather than any single factor, is well established since the groundbreaking research of Rutter et al (Rutter et al., 1975, 1976). Therefore, the proper investigation of GxE in psychiatric disorders may require the use of multivariable combined scores to represent both the liability conferred by genetic and environmental factors.

Attention-deficit/hyperactivity disorder (ADHD) is a prevalent (Polanczyk et al., 2007) neurodevelopmental condition with a suitable evidence profile for the study of GxE (Nigg et al., 2010). First, it is among the most heritable disorders across psychiatry, with a heritability index of 70% according to twin studies (Faraone & Larsson, 2019). Second, its combined genetic effect can be

Corresponding author: Luis Augusto Rohde, email: lrohde@terra.com.br

Cite this article: Leffa, D. T., Caye, A., Belangero, S. I., Gadelha, A., Pan, P. M., Salum, G. A., & Rohde, L. A. (2024). The synergistic effect of genetic and environmental factors in the development of attention-deficit/hyperactivity disorder symptoms in children and adolescents. *Development and Psychopathology* 36: 1134–1144, <https://doi.org/10.1017/S0954579423000366>



appropriately represented using polygenic risk score (PRS) (Ronald et al., 2021). PRS for ADHD (ADHD-PRS) has been shown to predict ADHD diagnosis (Jansen et al., 2020) and dimensional traits in the population (Groen-Blokhuys et al., 2014; Martin et al., 2014). Third, several environmental factors have been consistently described to increase the risk for ADHD (Faraone et al., 2021; Kim et al., 2020). Most are hypothesized to exert their effects by inducing neuronal damage during critical periods of development, with consequent disruptions of typical neurodevelopmental trajectories (Han et al., 2021). A recently published umbrella review performed a comprehensive and systematic evaluation of meta-analyses investigating the role of environmental risk factors in ADHD (Kim et al., 2020). Eight environmental factors were deemed to have convincing or highly suggestive evidence of association with ADHD, and a further 23 environmental factors were considered as having suggestive or weak evidence of association (Kim et al., 2020).

Although the role of both genetic and environmental factors on the pathophysiology of ADHD has been extensively explored, little is known regarding their interactive effects in disorder development (Nigg et al., 2010). Studies exploring GxE were almost solely conducted using a candidate gene approach (Nigg et al., 2010), and significant interactions findings were usually succeeded by failed replication attempts (Nigg et al., 2010). Moreover, prior studies investigating GxE have consistently focused on a single environmental factor (Nigg et al., 2010), which have limited power to detect significant interactions since environmental factors appear to increase the risk for ADHD in an additive manner (Schmitt & Romanos, 2012). Additionally, there is heterogeneity in the risk (both environmental and genetic) and resilience factors contributing to the emergence of ADHD symptoms in each individual (Faraone et al., 2021). Furthermore, as far as we are concerned, no study has explored GxE in ADHD by combining environmental risks into a single score. Therefore, in this study, we aimed to: (1) evaluate whether environmental and genetic factors have a synergistic effect in increasing symptoms of ADHD using ADHD-PRS to represent the combined influence of genetics, and environmental risk score (ERS) to represent the combined influence of the environment; (2) test the specificity of our findings by exploring interactive effects between ADHD-PRS and ERS for ADHD in depressive and anxiety symptoms; and (3) investigate the impact of environmental and genetic factors in the progression of ADHD over time. Our primary hypothesis was that environmental and genetic factors would act synergistically to increase the phenotypic expression of ADHD symptoms.

Methods and materials

Sample

Participants were children and adolescents (6 to 14 years of age on baseline) from the Brazilian High-Risk Cohort Study for Psychiatric Disorders (BHRCS), a large school-based community cohort designed to study developmental trajectories of psychopathology and mental disorders (Salum et al., 2015). The BHRCS started in 2010 when 9,937 children were selected from 57 schools in Porto Alegre and São Paulo and submitted to a first screening. This was followed by a selection of a high-risk subgroup for psychiatric disorders composed of 1,553 participants with psychiatric symptoms and high family loading of symptoms, and a randomly selected subgroup of 958 individuals. Details of the high-risk selection procedures can be found elsewhere (Salum et al., 2015). From those 9,937 children, 2,511 have been further assessed in three time

points: baseline (2010–2011), wave 1 (2013–2014), and wave 2 (2018–2019), with retention rates of 80 and 75%, respectively.

Procedures taken during this study followed the Helsinki Declaration of 1975, as revised in 2008. All participants were informed and gave written (parents) and verbal informed consent (subjects younger than 18 years of age). Since procedures involved human subjects, all methods were approved by the institutional review boards of all institutions engaged in the study (CAAE: 74563817.7.1001.5237).

Outcome measures

Dimensional symptoms

In each of the three evaluations, the Child Behavior Checklist (CBCL) (Bordin et al., 2013) and the Strength and Difficulties Questionnaire (SDQ) (Goodman, Ford, Simmons, et al., 2000) were used as a measure of dimensional psychopathology. For individuals older than 18 at the third evaluation, the Adolescent Behavior Checklist (ABCL) (Adams et al., 1997) was used instead of the CBCL. The CBCL and the ABCL are parent-report questionnaires that assess emotional, behavioral, and social problems. The SDQ is a 25-item parent-report questionnaire that provides four risk groups of behavioral and emotional difficulties (Goodman, Ford, Simmons, et al., 2000). As a measure of ADHD symptoms, we used raw scores derived from the Attention Problems subscale of CBCL or ABCL (Adams et al., 1997; Bordin et al., 2013) and raw scores from the Hyperactivity subscale of SDQ (Goodman, Ford, Simmons, et al., 2000). To measure depressive/anxiety symptoms, we used raw scores from the Anxious/Depressed subscale of CBCL or ABCL (Adams et al., 1997; Bordin et al., 2013) and raw scores from the SDQ Emotion Scale (Goodman, Ford, Simmons, et al., 2000).

Psychiatric diagnosis

In each of the three evaluations, the diagnosis of psychiatric disorders (ADHD, depressive disorders, and anxiety disorders) according to DSM-IV was performed using the Development and Well-Being Assessment (DAWBA) (Goodman, Ford, Richards, et al., 2000), a validated structured interview administered by trained lay interviewers. The rating procedure was performed by nine certified child psychiatrists trained and supervised closely by a senior child psychiatrist with extensive experience rating the DAWBA. The Brazilian Portuguese version showed acceptable indexes, with agreements ranging from 90 to 95%, and Kappa from 0.72 to 0.84 (Salum et al., 2015). For the diagnosis of ADHD, DAWBA assessed the 18 ADHD symptoms, their pervasiveness, age at onset, and associated impairment. A similar approach was used for ascertaining the diagnosis of depressive disorders (including major depressive disorder, other specified depressive disorder, and unspecified depressive disorder) and anxiety disorders (including separation anxiety, specific phobia, social phobia, panic disorder, agoraphobia, post-traumatic stress disorder, obsessive-compulsive disorder, generalized anxiety disorder, and other specified anxiety).

Polygenic risk scores

Genomic DNA was isolated from saliva (Oragene) using prepIT-L2P reagent (DNAgenotek). Genotyping was performed using the Global Screening Array (Illumina). Single-nucleotide polymorphisms (SNPs) with a minor allele frequency <1%, locus missingness >10%, or Hardy-Weinberg equilibrium significance <.000001 were excluded, as were individuals with genotype missingness >10% and an estimation of identity by descent >0.12.

ADHD-PRSs were calculated as the weighted sum of risk alleles for ADHD according to the most recent genome-wide association study (GWAS) (Demontis *et al.*, 2019). The calculation was performed using the PRSice software v2 (Euesden *et al.*, 2015). *P*-value-informed clumping was performed, retaining SNPs with the smallest *P*-value within a 250-kb window and excluding those SNPs in linkage disequilibrium ($r^2 > 0.1$). Nine ADHD-PRSs were calculated using subsets of SNPs selected according to the following GWAS *p*-value thresholds: 1, 0.8, 0.5, 0.4, 0.3, 0.2, 0.1, 0.05, 0.01. The total number of SNPs in each threshold can be found in Table S1. Main analyses were performed with the threshold of 1, which included all SNPs. ADHD-PRSs were transformed into *z*-scores for better visualization. To investigate population structure, principal components analysis was conducted using PLINK 1.9 (Chang *et al.*, 2015).

Environmental risk scores

ADHD ERSs were calculated using an approach adapted from PRS, as previously performed for schizophrenia (Padmanabhan *et al.*, 2017). In summary, we identified the most consistent environmental factors associated with ADHD according to the literature. We extracted and log-converted the odds ratio estimated in the meta-analyses to obtain beta values. Then, we multiplied the beta of each environmental risk by 1 if the exposure was present in a particular subject or by 0 if it was absent, and calculated the weighted sum for each individual. The selection of environmental factors was performed in a two-step approach: (1) we identified all potential environmental risk factors reported on the recent and comprehensive umbrella review of meta-analyses published by Kim *et al.*, (Kim *et al.*, 2020), in which authors systematically evaluated meta-analyses of environmental risk and protective factors for ADHD; (2) we performed a literature review to identify potentially relevant meta-analyses published after October 2019 (date of search by Kim *et al.* (2020)). A detailed description of included and excluded environmental risk factors identified in each step, as well as reasons for exclusion, can be found in the Supplementary Material. The environmental risk factor was included in our score if it: (1) had been reported as OR or RR (for the prevalence of ADHD, both values are similar) (Cummings, 2009); (2) was statistically significant in a random-effects summary estimate; (3) was assessed by a minimum of three estimates; and (4) had been collected in our sample. If authors reported adjusted and unadjusted effect estimates, the adjusted estimates were extracted even if estimated from fewer studies. If more than one meta-analysis evaluating the same risk factor was found, the one with more studies included was selected for extraction, considering that both followed similar methodological criteria. Environmental risk factors included in our score can be found in Table S2. Risk factors not included in the score can be found in Table S3.

Statistical analysis

Mixed-effects linear models were performed to test the interaction between ADHD-PRS and ERS on ADHD symptoms (CBCL/ABCL, SDQ). As a secondary analysis, mixed-effects logistic regression models were performed to test the interaction between ADHD-PRS and ERS on ADHD diagnosis. We decided to use continuous measurements of symptoms in our primary analysis, rather than the categorical diagnosis, to increase the statistical power. The following model was used: ADHD symptoms \sim ADHD-PRS*ERS + ADHD-PRS + ERS + covariates. We also used mixed-effects linear models and mixed-effects

logistic regression models to confirm the association between ADHD-PRS and ADHD while controlling for ERS, and vice-versa (ADHD symptoms \sim ADHD-PRS + ERS + covariates). Additionally, we tested the interaction between age and ADHD-PRS, and between age and ERS. This was performed to evaluate whether ADHD-PRS or ERS were associated with distinct trajectories over time. For that, the following models were used: ADHD symptoms \sim ADHD-PRS*age + ADHD-PRS + age + covariates, and ADHD symptoms \sim ERS*age + ERS + age + covariates. All models were adjusted for sex, age, and ancestry (using the first ten principal components). Furthermore, as recommended for proper adjustment, we adjusted for the interaction between the continuous independent variables (ADHD-PRS, ERS) with sex and age (Keller, 2014). Data from the three assessments were used, and mixed models were fit including subject-specific random slopes and intercepts to cluster the multiple assessments per individuals. ADHD-PRS, ERS, and dimensional psychopathology measures were standardized. Our primary analyses were conducted including all SNPs (ADHD-PRSs with a threshold of 1). Sensitivity analyses with additional thresholds were performed, and they can be found in the Supplementary Material.

To confirm the specificity of our findings, similar models were fit using symptoms of depression and anxiety, as well as their categorical diagnosis. A linear regression model was performed with ERS as the dependent variable and ADHD-PRS as the independent variable to test for gene-environment correlation. Logistic regression models were also performed using each environmental factor as a dichotomic dependent variable (yes/no) and ADHD-PRS as the independent variable. Significant interactions were explored using marginal effects to represent the change in linear prediction of an outcome for one standardized unit change of ADHD-PRS when ERS is held constant at different values (*z*-scores of -2 to 2 , with 1-unit increases). Comparisons of demographic characteristics between individuals with or without ADHD were performed using χ^2 tests for categorical variables and *t*-tests for continuous variables. The percentage of variance in symptoms explained by genetic and environmental factors was calculated using the Bosker/Snijders pseudo R^2 value for mixed-effects linear models (Snijders & Bosker, 1994). The variance explained by GxE was calculated by subtracting the variance explained by the model with ADHD-PRS and ERS (ADHD symptoms \sim ADHD-PRS + ERS + covariates) from the variance explained by the full model (ADHD symptoms \sim ADHD - PRS*ERS + ADHD-PRS + ERS + covariates). *P*-values lower than 0.05 were considered statistically significant. All analyses were performed using Stata version 14.0 (StataCorp, College Station, Texas USA). Graphs were performed using GraphPad Prism version 8.4.0 (GraphPad Software, California, USA).

Results

From the 2,511 individuals evaluated at baseline, GWAS data was available for 2,189, and complete data (including genotyping, environmental risk factors, and psychiatric diagnosis) was available for a total of 2,046 individuals. At baseline, the mean (SD) age was 10.18 (1.91) years, and 940 (45.94%) of the subjects were female (Table 1). From the 2,046 individuals with complete data at baseline, 1,685 were followed in wave 1 (mean age = 13.44; SD = 1.91) and 1,603 in wave 2 (mean age = 18.27; SD = 2). The prevalence of ADHD was 11.49% at baseline, 5.22% in wave 1, and 2.81% in wave 2 (Table 1). Demographic characteristics at each assessment can be found in Table 1. Sample characteristics for individuals with or

Table 1. Demographic characteristics at each assessment

	Baseline	Wave 1	Wave 2
Sample size	2046	1685	1603
Female	940 (45.94%)	759 (45.04%)	748 (46.66%)
Age, years	10.18 (1.91)	13.44 (1.91)	18.27 (2.00)
Mother education*			
No education or elementary school	821 (40.12%)	649 (38.51%)	622 (38.80%)
Maternal age at birth, years	26.26 (6.65)	26.46 (6.65)	26.44 (6.71)
Single-parent family*	216 (10.55%)	163 (9.67%)	163 (10.16%)
Smoking during pregnancy*			
Light smoker	241 (11.77%)	202 (11.98%)	188 (11.72%)
Heavy smoker	166 (8.11%)	135 (8.01%)	129 (8.04%)
Antidepressants during pregnancy*	8 (.39%)	8 (0.47%)	7 (0.43%)
Hypertensive disorders of pregnancy*	414 (20.23%)	343 (20.35%)	314 (19.58%)
DM during pregnancy*	87 (4.25%)	75 (4.45%)	73 (4.55%)
Maternal stress during pregnancy*	680 (33.23%)	552 (32.75%)	528 (32.93%)
Cesarean birth*	790 (38.61%)	656 (38.93%)	618 (38.55%)
Preterm*			
<34 weeks	73 (3.56%)	63 (3.73%)	58 (3.61%)
34–37 weeks	348 (17.00%)	291 (17.27%)	283 (17.65%)
Never breastfed*	174 (8.50%)	145 (8.60%)	137 (8.54%)
ADHD**	235 (11.48%)	88 (5.22%)	45 (2.80%)
Depression**	73 (3.56%)	117 (6.94%)	249 (15.53%)
Anxiety**	228 (11.14%)	228 (13.53%)	245 (15.28%)

DM = diabetes mellitus; ADHD = attention-deficit/hyperactivity disorder. Continuous variables are presented as mean and standard deviation.

*Data collected only at baseline.

**Data collected at each assessment.

without a diagnosis of ADHD at each time point can be found in the Supplementary Material (Tables S4, S5, and S6). In sensitivity analyses, we observed decreased maternal education (defined as no education or elementary school only) to be consistently associated with lower rates of follow-up (Table S7). Furthermore, we observed that higher maternal age and a diagnosis of anxiety at baseline were consistently associated with higher rates of follow-up (Table S7).

Environmental risk factors

The following environmental risk factors were included in our ERS: (1) low maternal education (Russell et al., 2016); (2) low maternal age (Min et al., 2021); (3) single-parent family (Russell et al., 2016); (4) smoking during pregnancy (Huang et al., 2018); (5) use of antidepressants during pregnancy; (6) hypertensive disorders of pregnancy (Maher et al., 2018); (7) diabetes mellitus during pregnancy (Zeng et al., 2019); (8) maternal stress during pregnancy (Manzari et al., 2019); (9) cesarean delivery (Zhang et al., 2019); (10) preterm birth (Allotey et al., 2018; Franz et al., 2018); and (11) absence of breastfeeding (Yan Zeng et al., 2020) (for a detailed description of the selected environmental risk factors, please see the Supplementary Material). Data regarding environmental risk factors were obtained during the household parent interview at baseline. No evidence of gene-environment correlation was detected, with OR ranging from .96 to 1.10 (Table S8).

ADHD

Mixed-effects linear regression models demonstrated a significant interaction between ADHD-PRS and ERS on CBCL/ABCL Attention Problems and on SDQ Hyperactivity (Figure 1, Table 2). Marginal effect analysis revealed a positive association between ADHD-PRS and symptoms of ADHD only in individuals with ERS z-score > 0. The strength of the association between symptoms of ADHD and ADHD-PRS increased as a function of growing ERS. For example, at ERS of 0 z-score, each standardized unit increase in ADHD-PRS was associated with an increase of .08 z-score on CBCL/ABCL Attention Problems (95% CI .04, .12; $p < .0001$), and .07 z-score on SDQ Hyperactivity (95% CI .04, .11; $p < .0001$). At ERS of 2 z-scores, each standardized unit increase in ADHD-PRS was associated with an increase of .17 on CBCL/ABCL Attention Problems (95% CI .10, 0.25; $p < .0001$), and .15 on SDQ Hyperactivity (95% CI .08, .23; $p < .0001$). There was no association between ADHD-PRS and symptoms of ADHD in individuals with ERS of -1 z-score (each standardized unit increase in ADHD-PRS was associated with an increase of .037 [95% CI -.015, .090; $p = .16$] and .039 [95% CI -.013, .093; $p = .14$], for CBCL/ABCL Attention Problems and SDQ Hyperactivity, respectively). Similarly, no association was found for ERS of -2 z-scores (each standardized unit increase in ADHD-PRS was associated with a decrease of .008 [95% CI -.08, .07; $p = .82$] and of .0004 [95% CI -.08, .08; $p = .99$], for

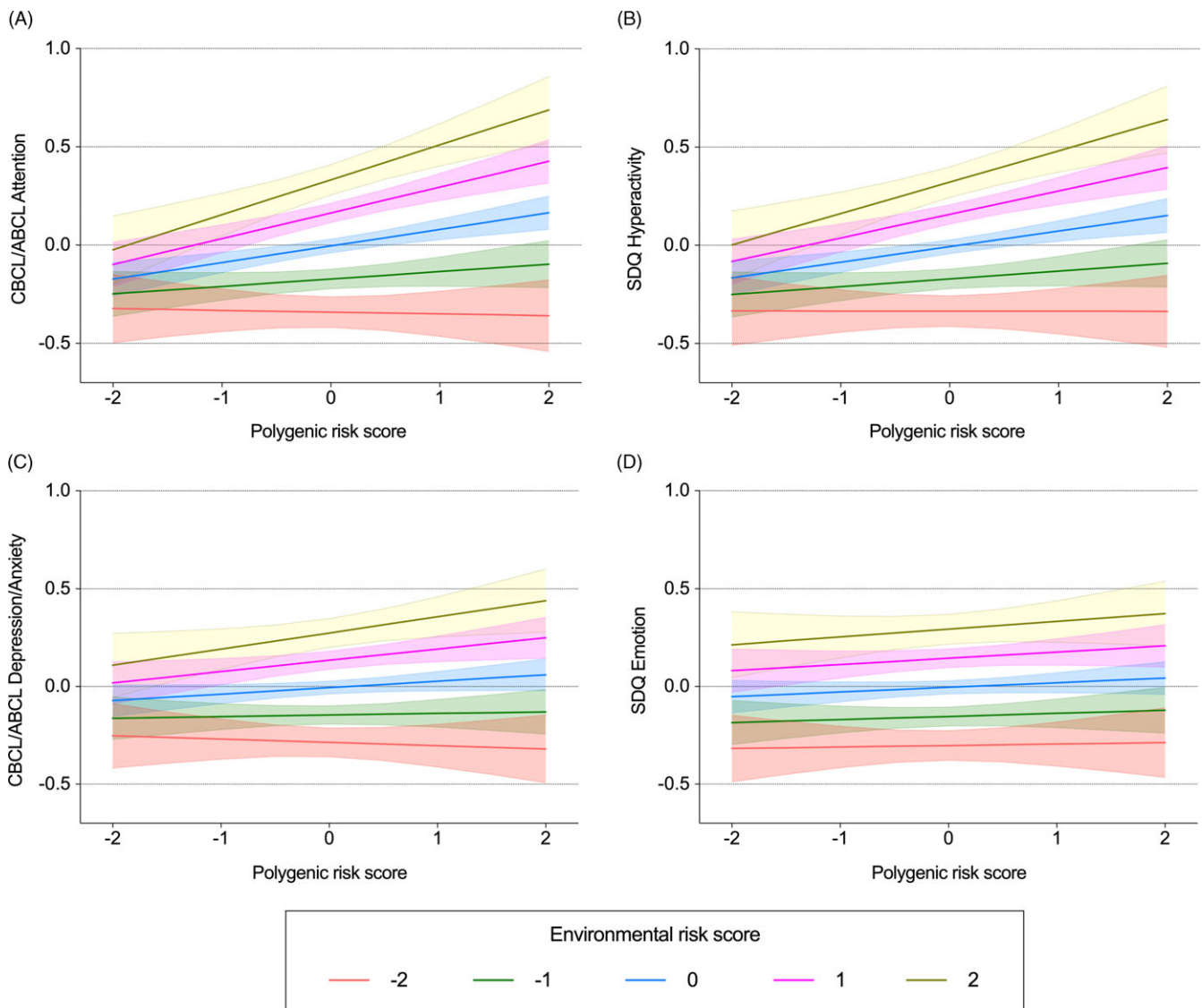


Figure 1. Interactive effects between polygenic risk scores and environmental risk scores on dimensional psychopathologic measures. Mean predicted values and 95% confidence intervals of dimensional symptoms of attention-deficit/hyperactivity disorder (ADHD) (A, B) and depression/anxiety (C, D) estimated from linear mixed-effects models testing the interaction between ADHD-PRS and ERS. Data are presented as z-scores.

Model = Dimensional symptoms \sim ADHD-PRS*ERS + ADHD-PRS + ERS + age + sex + age*ADHD-PRS + age*ERS + sex*ADHD-PRS + sex*ERS + 10 PCs.

CBCL = Child Behavior Checklist; ABCL = Adolescent Behavior Checklist; SDQ = Strength and Difficulties Questionnaire; ADHD = attention-deficit/hyperactivity disorder; PRS = polygenic risk score; ERS = environmental risk score; PCs = principal components.

CBCL/ABCL Attention Problems and SDQ Hyperactivity, respectively). Similar findings were obtained after correcting for sample attrition using inverse probability weights (Table S9). In sensitivity analyses excluding one factor at a time from the ERS, results were still significant except when the ERS was calculated excluding maternal stress during pregnancy or maternal education (Table S10).

Mixed-effects linear regression models confirmed the main effect of ADHD-PRS on CBCL/ABCL Attention Problems, and on SDQ Hyperactivity (Table 2). Similarly, we observed a significant main effect of ERS on CBCL/ABCL Attention Problems, and on SDQ Hyperactivity. Moreover, mixed-effects logistic regression models confirmed that increased ADHD-PRS was associated with higher odds of ADHD diagnosis (Table S11). Similarly, higher odds of ADHD diagnosis were observed with increased ERS.

Although an interactive effect between ADHD-PRS and ERS did not reach statistical significance for the ADHD categorical model, it was marginally significant (Table S11). Sensitivity analyses with additional PRS thresholds were performed, and they can be found in Tables S12 and S13.

Depressive and anxiety disorders

Mixed-effects linear regression models demonstrated a significant main effect of ERS on CBCL/ABCL Depression/Anxiety and on SDQ Emotion (Table 2). We observed a statistically significant main effect of ADHD-PRS on CBCL/ABCL Depression/Anxiety, but not on SDQ Emotion. The interaction between ERS and ADHD-PRS did not reach statistical significance neither for CBCL/ABCL Depression/Anxiety nor for SDQ Emotion (Table 2).

Table 2. Main effects and interactions between environmental risk scores and polygenic risk scores on dimensional psychopathologic measures

	CBCL/ABCL Attention			SDQ Hyperactivity			CBCL/ABCL Depression/anxiety			SDQ Emotion		
	β (95% CI)	<i>p</i> -value	Total variance explained	β (95% CI)	<i>p</i> -value	Total variance explained	β (95% CI)	<i>p</i> -value	Total variance explained	β (95% CI)	<i>p</i> -value	Total variance explained
Main effects												
ADHD-PRS ^a	.09 (.05, .13)	<.0001	0.73%	.08 (.04, .12)	<.0001	0.64%	.04 (.003, .07)	.03	0.14%	.02 (-.008, 0.6)	.13	0.09%
ERS ^b	.17 (.13, .20)	<.0001	2.89%	.16 (.13, .10)	<.0001	2.65%	.14 (.10, .17)	<.0001	1.99%	.15 (.11, .18)	<.0001	2.23%
Additive model ADHD-PRS + ERS^c												
ADHD-PRS	.08 (.04, .12)	<.0001	3.51%	.08 (.04, .12)	<.0001	3.19%	.03 (-.02, .07)	.06	2.09%	.02 (-.01, 0.6)	.23	2.28%
ERS	.16 (.13, .20)	<.0001		.16 (.12, .19)	<.0001		.14 (.10, .17)	<.0001		.15 (.11, .18)	<.0001	
Interaction model ADHD-PRS * ERS^d												
ADHD-PRS * ERS	.04 (.01, .08)	.007	3.92%	.04 (.006, .07)	.02	3.47%	.02 (-.007, .05)	.13	2.22%	.008 (-.02, .04)	.63	2.42%
ADHD-PRS	.08 (-.003, .18)	.05		.01 (-.07, .10)	.69		.04 (-.04, .14)	.31		-.02 (-.11, .07)	.64	
ERS	.32 (.22, .41)	<.0001		.20 (.11, .28)	<.0001		.21 (.12, .31)	<.0001		.23 (.14, .32)	<.0001	
Interaction model ADHD-PRS * Age^e												
ADHD-PRS * Age	-.001 (-.007, .004)	.71		.003 (-.002, .008)	.28		-.001 (-.007, .004)	.65		.003 (-.002, .009)	.25	
Interaction model ERS * Age^f												
ERS * Age	-.010 (-.016, -.004)	.0001		-.002 (-.008, .003)	.40		-.005 (-.01, .0009)	.09		-.005 (-.01, .0006)	.07	

β = regression coefficient from the mixed-effects linear regression models; CI = confidence interval; CBCL = Child Behavior Checklist; ABCL = Adolescent Behavior Checklist; SDQ = Strength and Difficulties Questionnaire; ADHD = attention-deficit/hyperactivity disorder; PRS = polygenic risk scores; ERS = environmental risk score; PCs = principal components.

a. Model = Dimensional symptoms ~ ADHD-PRS + age + sex + 10 PCs.

b. Model = Dimensional symptoms ~ ERS + age + sex.

c. Model = Dimensional symptoms ~ ADHD-PRS + ERS + age + sex + 10 PCs.

d. Model = Dimensional symptoms ~ ADHD-PRS*ERS + ADHD-PRS + ERS + age + sex + age*ADHD-PRS + age*ERS + sex*ADHD-PRS + sex*ERS + 10 PCs.

e. Model = Dimensional symptoms ~ ADHD-PRS*age + ADHD-PRS + age + sex + sex*ADHD-PRS + sex*age + 10 PCs.

f. Model = Dimensional symptoms ~ ERS*time + ERS + age + sex + sex*ERS + sex*age.

The total variance explained represents the variance explained by the models described above (from a to f) minus the variance explained by a model with only covariates (dimensional symptoms ~ age + sex + 10 PCs). Percentage of variance explained was calculated using the Bosker/Snijders pseudo R^2 value (Snijders & Bosker, 1994).

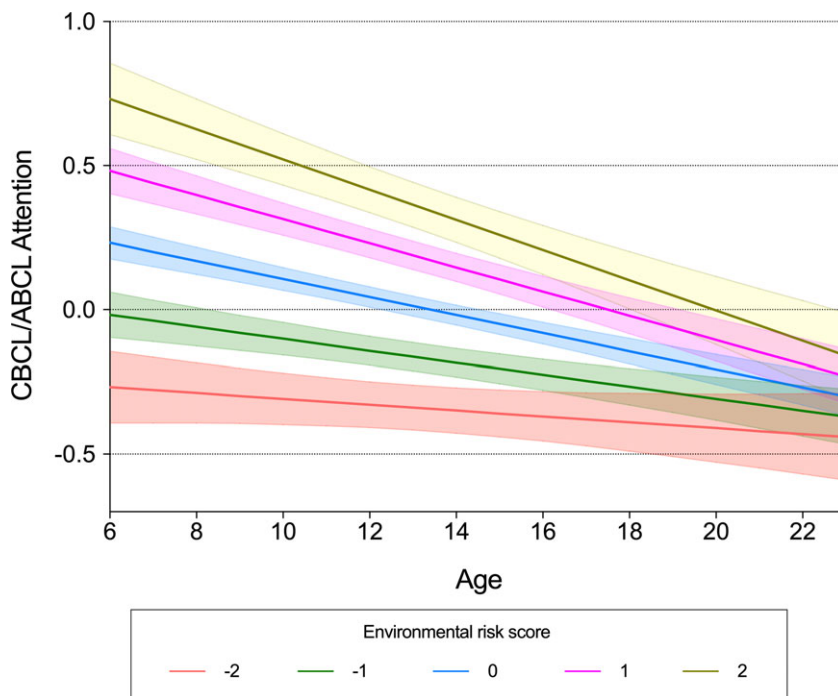


Figure 2. Interactive effects between environmental risk scores and age on symptoms of attention-deficit/hyperactivity disorder. Mean predicted values and 95% confidence intervals of dimensional symptoms of ADHD estimated from linear mixed-effects models testing the interaction between ERS and age. Data for CBCL/ABCL Attention and ERS are presented as z-scores. CBCL = Child Behavior Checklist; ABCL = Adolescent Behavior Checklist; SDQ = Strength and Difficulties Questionnaire; ERSs = environmental risk score; ADHD = attention-deficit/hyperactivity disorder. Model = Dimensional symptoms \sim ERS*age + ERS + age + sex + sex*ERS + sex*age.

Mixed-effects logistic regression models demonstrated a significant main effect of ERS on the diagnosis of depressive disorders and on the diagnosis of anxiety disorders (Table S11). However, the main effect of ADHD-PRS did not reach statistical significance for the diagnosis of depressive disorders or anxiety disorders. Similarly, the interaction between ADHD-PRS and ERS did not reach statistical significance for the diagnosis of depressive disorders or anxiety disorders (Table S11). Sensitivity analyses with additional PRS thresholds were performed, and they can be found in Tables S14, S15, and S16.

Effects of age

Mixed-effects linear regression models demonstrated a significant interaction between ERS and age on CBCL/ABCL Attention Problems (Table 2), indicating a decreased effect of ERS with increased age (Figure 2). More specifically, marginal effect analysis revealed that older age was associated with lower ADHD symptoms for individuals with ERS z-score > -1 . The strength of the association increased with increasing ERS. For example, at ERS of -1 z-score, there was a yearly decrease of .02 z-score on CBCL/ABCL Attention Problems (95% CI $-.02, -.01$; $p < .0001$). At ERS of 1 z-score, the yearly decrease was of .04 (95% CI $.05, .03$; $p < .0001$), and at ERS of 2 z-scores, the yearly decrease was of .05 (95% CI $-.06, .03$; $p < .0001$).

No significant interaction between ERS and age was observed on SDQ Hyperactivity, CBCL/ABCL Depression/Anxiety, or SDQ Emotion (Table 2). No significant interaction was observed between ADHD-PRS and age on dimensional psychopathology measures (Table 2). Mixed-effects logistic regression models did not reveal statistically significant interactions between ERS and age, or between ADHD-PRS and age, on the diagnosis of ADHD, depressive disorders, or anxiety disorders (Table S11).

Discussion

GxE studies have an indisputable impact on psychiatric research. However, partially due to the candidate gene and candidate

environment approach, they suffer from low statistical power and replication rates. In this sense, the use of combined scores to represent the liability conferred by genetic and environmental factors could be a valuable approach. ADHD is a suitable candidate for studying GxE in psychiatry for presenting high heritability and well-defined environmental risk factors. Our findings demonstrate that environmental and genetic factors act synergistically in the development of ADHD symptoms in children and adolescents. More specifically, the strength of the association between symptoms of ADHD and ADHD-PRS increased as a function of growing ERS, and individuals with a high genetic risk are more likely to be negatively affected by the environmental risks. This type of GxE is known as diathesis-stress model (Monroe & Simons, 1991). On the other hand, no effect of ADHD-PRS was observed among subjects with low exposure to environmental factors. Furthermore, while our results suggest that environmental risk factors for ADHD are also associated with symptoms of depression and anxiety, their interaction with PRSs appears to be specific for symptoms of ADHD. As far as we are aware, this is the first study to evaluate GxE in ADHD using multivariable combined scores to represent both the liability conferred by genetic and environmental factors.

In this study, we showed a significant interaction between genetic and environmental factors in the development of symptoms of ADHD in children and adolescents, using a combined risk score to represent each one. The notion that environmental stressors could predispose to the development of psychiatric disorders in individuals possessing innate biological predispositions has been debated for centuries (Kendler, 2020). ADHD is a promising disorder to study GxE due to its high heritability of 70–80% estimated from twin studies (Faraone & Larsson, 2019). The use of PRS is particularly relevant for ADHD since the disorder has a highly polygenic genetic architecture, with common variants playing an important role (Demontis et al., 2019). The studies of Østergaard et al., (Østergaard et al., 2020) and Stojanovski et al., (Stojanovski et al., 2018), however, are exceptions of the candidate gene approach. Østergaard et al., (Østergaard et al.,

2020) investigated the interaction between ADHD-PRS and psychosocial risk factors and found no significant synergistic effect. On the other hand, Stojanovski et al., (Stojanovski et al., 2018) observed a significant interaction between ADHD-PRS and mild traumatic brain injury (TBI). Interestingly, the authors observed that ADHD-PRS were associated with ADHD symptoms only in subjects with no TBI, suggesting a reduced role of genetics in subjects exposed to mild trauma (Stojanovski et al., 2018). These findings point to an opposite direction when compared to our study and could indicate a distinct GxE mechanism for TBI. However, the largest meta-analysis assessing the association between ADHD and TBI showed that severe TBI, but not mild or moderate, was a risk factor for ADHD (Asarnow et al., 2021). On the other hand, across TBI injury severity, the rate of preinjury ADHD diagnoses was significantly higher than the general population (Asarnow et al., 2021). These findings suggest that mild and moderate TBI are not risk factors for ADHD, but more likely a consequence of symptoms from the disorder.

According to our findings, children exposed to environmental risk factors for ADHD are more likely to develop inattention and hyperactivity/impulsivity symptoms. On the other hand, a protective environment can act as a buffer against the genetic liability for ADHD. Most risk factors included in the ERS exert their effects in the prenatal and perinatal periods (Kim et al., 2020), which are critical moments of brain development (VanRyzin et al., 2018). The pathophysiological mechanisms underlying environmental risk factors for ADHD are highly heterogeneous and have been hypothesized to comprise: (1) toxic effects of chemical products due to maternal smoking (Huang et al., 2018); (2) hypoxia in the developing fetal brain due to hypertensive disorders of pregnancy (Maher et al., 2018) and maternal DM (Zeng et al., 2019); (3) long-term dysregulation of fetal hypothalamic–pituitary–adrenal axis due to maternal stress (Manzari et al., 2019); (4) changes in the microbiota of offspring with consequent impaired immune development from cesarean delivery (Polidano et al., 2017; Zhang et al., 2019); (5) brain immaturity with decreased resilience to external insults from preterm birth (Allotey et al., 2018; Franz et al., 2018); (6) absence of neuroprotective effects of breast milk in children who were never breastfed (Zeng et al., 2020); and (7) disruption in the development of neurotransmitter systems from antidepressant use during pregnancy (Jiang et al., 2018; Leshem et al., 2021). Furthermore, low maternal education, low maternal age, and single-parent family are supposed to represent a more complex set of risk factors related to social vulnerability (Russell et al., 2016). Similar to the environmental influences, the mechanisms behind the genetic liability for ADHD are related to impaired neurodevelopmental processes, including synapse formation, neuronal plasticity, and neurotransmitter homeostasis (Demontis et al., 2019).

Our findings show that environmental risk factors for ADHD are associated with increased symptoms of depression and anxiety in the population and with higher rates of depressive and anxiety disorders diagnosed according to DSM-IV. These results suggest a broad impact of environmental stressors in the susceptibility to psychopathology that is not specific to ADHD. These findings are in accordance with previous studies highlighting the transdiagnostic effect of environmental risk factors (Arango et al., 2021). Moreover, prior results demonstrate that environmental risk factors are associated with psychiatric comorbidities in patients with ADHD (Owens & Hinshaw, 2013). We did not observe a consistent

increased risk for a diagnosis of depressive disorders or anxiety disorders in individuals with higher ADHD-PRS. However, we observed that ADHD-PRSs were associated with higher symptoms of depression and anxiety in the whole population. These findings are consistent with prior studies demonstrating an association between ADHD-PRS and depression or anxiety (Martin et al., 2018; Rice et al., 2019). Furthermore, they support previous studies showing that ADHD-PRSs have a broad influence on childhood psychopathology (Brikell et al., 2018). The relationship between genetic risk for ADHD and symptoms of depression/anxiety is also in accordance with studies demonstrating a high genetic overlap between distinct psychiatric disorders, with several contributing loci playing a pleiotropic role (“Genomic Relationships, Novel Loci, and Pleiotropic Mechanisms across Eight Psychiatric Disorders,” 2019). Although a genetic overlap between psychiatric disorders has been demonstrated in previous studies, our findings highlight that environmental risk factors are likely more relevant in the association between ADHD and depression/anxiety. Future studies should be designed to disentangle the role of environment and genetics in psychiatric comorbidities in ADHD.

Our results should be viewed in light of some limitations. First, it is important to stress that even though the literature on the impact of environmental factors on the risk for ADHD is broad, the identification of causal associations is still a challenge, and we cannot rule out that some of the effects observed are due to unknown confounding and reverse causation. For example, smoking during pregnancy could be related to ADHD in the offspring due to genetic confounders (Obel et al., 2016). The association between maternal use of antidepressants and ADHD has also been suggested to result from confounding since this effect has been shown to persist in children whose mothers were exposed to antidepressants only before pregnancy (Leshem et al., 2021). Furthermore, rates of ADHD in children whose mothers used antidepressants were similar to the rates of ADHD in children whose mothers had untreated psychiatric conditions, suggesting that maternal psychiatric disorder might be a bias in the association (Jiang et al., 2018). Even though our analyses indicate the absence of significant gene–environment correlations, we could not explore possible confounding effects of environment–environment interactions. We only included environmental risk factors available in our dataset for which associations with ADHD have been summarized in meta-analyses. Although scientifically consistent, this methodological approach likely excluded additional relevant risk factors. Finally, although the ADHD-PRS and ERS may be useful for prediction of symptoms and diagnosis, they do not inform GxE mechanistic process directly.

This is the first study to demonstrate an interactive effect between genetic and environmental factors in ADHD using a combined score to represent each one. Put simply, the synergistic effect indicates that the combined effect between gene and environment is more significant than the sum of each individually. Mechanistically, our findings suggest that environmental stressors modulate the genetic risk for ADHD. Clinically, our results highlight that it might make sense to investigate if reducing environmental risks could be a potentially effective measure to prevent the development of symptoms of ADHD, especially in children with a family history of the disorder. Finally, the use of multivariable combined scores in GxE studies could be useful to overcome some of the limitations intrinsic to the candidate gene and candidate environment approach.

Supplementary material. The supplementary material for this article can be found at <https://doi.org/10.1017/S0954579423000366>

Acknowledgements. This study was supported by the National Institute of Developmental Psychiatry for Children and Adolescents, São Paulo, with grants from the São Paulo Research Foundation (Fapesp 2014/50917-0; 2013/08531-5) and the Brazilian National Council for Scientific and Technological Development (CNPq 465550/2014-2). DTL was supported by a CNPq post-doctoral fellowship (grant number 154116/2018-1) and supported by a NARSAD Young Investigator Grant from the Brain & Behavior Research Foundation (grant number 29486). We thank Mauricio Scopel Hoffmann, MD, PhD, Universidade Federal de Santa Maria, Santa Maria, Brazil, for the help with the inverse probability weights.

Conflicts of interest. LAR has received grant or research support from, served as a consultant to, and served on the speakers' bureau of Aché, Bial, Medice, Novartis/Sandoz, Pfizer/Upjohn, and Shire/Takeda in the last three years. The ADHD and Juvenile Bipolar Disorder Outpatient Programs chaired by Dr LAR have received unrestricted educational and research support from the following pharmaceutical companies in the last three years: Novartis/Sandoz and Shire/Takeda. Dr LAR has received authorship royalties from Oxford Press and ArtMed. All other authors report no financial relationships with commercial interests.

References

- Adams, C. D., Kelly, M. L., & McCarthy, M. (1997). The Adolescent Behavior Checklist: Development and initial psychometric properties of a self-report measure for adolescents with ADHD. *Journal of Clinical Child Psychology*, 26(1), 77–86. https://doi.org/10.1207/s15374424jccp2601_8
- Allotey, J., Zamora, J., Cheong-See, F., Kalidindi, M., Arroyo-Manzano, D., Axtalot, E., van der Post, J. A. M., Mol, B. W., Moore, D., Birtles, D., Khan, K. S., Thangaratinam, S. (2018). Cognitive, motor, behavioural and academic performances of children born preterm: A meta-analysis and systematic review involving 64 061 children. *BJOG: An International Journal of Obstetrics and Gynaecology*, 125(1), 16–25. <https://doi.org/10.1111/1471-0528.14832>
- Arango, C., Dragioti, E., Solmi, M., Cortese, S., Domschke, K., Murray, R. M., Jones, P. B., Uher, R., Carvalho, A. F., Reichenberg, A., Shin, J. I., Andreassen, O. A., Correll, C. U., Fusar-Poli, P. (2021). Risk and protective factors for mental disorders beyond genetics: An evidence-based atlas. *World Psychiatry*, 20(3), 417–436. <https://doi.org/10.1002/wps.20894>
- Asarnow, R. F., Newman, N., Weiss, R. E., & Su, E. (2021). Association of attention-deficit/hyperactivity disorder diagnoses with pediatric traumatic brain injury: A meta-analysis. *JAMA Pediatrics*, 175(10), 1009–1016. <https://doi.org/10.1001/jamapediatrics.2021.2033>
- Border, R., Johnson, E. C., Evans, L. M., Smolen, A., Berley, N., Sullivan, P. F., & Keller, M. C. (2019). No support for historical candidate gene or candidate gene-by-interaction hypotheses for major depression across multiple large samples. *American Journal of Psychiatry*, 176(5), 376–387. <https://doi.org/10.1176/appi.ajp.2018.18070881>
- Bordin, I. A., Rocha, M. M., Paula, C. S., Teixeira, M. C. T. V., Achenbach, T. M., Rescorla, L. A., & Silveira, E. F. M. (2013). Child Behavior Checklist (CBCL), Youth Self-Report (YSR) and Teacher's Report Form (TRF): An overview of the development of the original and Brazilian versions. *Cadernos de Saude Publica*, 29(1), 13–28. <https://doi.org/10.1590/s0102-311x2013000100004>
- Brikell, I., Larsson, H., Lu, Y., Pettersson, E., Chen, Q., Kuja-Halkola, R., Karlsson, R., Lahey, B. B., Lichtenstein, P., Martin, J. (2018). The contribution of common genetic risk variants for ADHD to a general factor of childhood psychopathology. *Molecular Psychiatry*, 1-13(8), 1809–1821. <https://doi.org/10.1038/s41380-018-0109-2>
- Chang, C. C., Chow, C. C., Tellier, L. C., Vattikuti, S., Purcell, S. M., & Lee, J. J. (2015). Second-generation PLINK: Rising to the challenge of larger and richer datasets. *GigaScience*, 4(1), 7. <https://doi.org/10.1186/s13742-015-0047-8>
- Cummings, P. (2009). The relative merits of risk ratios and odds ratios. *Archives of Pediatrics & Adolescent Medicine*, 163(5), 438–445. <https://doi.org/10.1001/archpediatrics.2009.31>
- Demontis, D., Walters, R. K., Martin, J., Mattheisen, M., Als, T. D., Agerbo, E., Baldursson, G., Belliveau, R., Bybjerg-Grauholm, J., Bækvad-Hansen, M., Cerrato, F., Chambert, K., Churchhouse, C., Dumont, A., Eriksson, N., Gandal, M., Goldstein, J. I., Grasby, K. L., Grove, J. . . . *et al.* (2019). Discovery of the first genome-wide significant risk loci for attention deficit/hyperactivity disorder. *Nature Genetics*, 51(1), 63–75. <https://doi.org/10.1038/s41588-018-0269-7>
- Duncan, L. E., & Keller, M. C. (2011). A critical review of the first 10 years of candidate gene-by-environment interaction research in psychiatry. *The American Journal of Psychiatry*, 168(10), 1041–1049. <https://doi.org/10.1176/appi.ajp.2011.11020191>
- Euesden, J., Lewis, C. M., & O'Reilly, P. F. (2015). PRSice: Polygenic risk score software. *Bioinformatics (Oxford, England)*, 31(9), 1466–1468. <https://doi.org/10.1093/bioinformatics/btu848>
- Faraone, S. V., Banaschewski, T., Coghill, D., Zheng, Y., Biederman, J., Bellgrove, M. A., Newcorn, J. H., Gignac, M., Al Saud, N. M., Manor, I., Rohde, L. A., Yang, L., Cortese, S., Almagor, D., Stein, M. A., Albatti, T. H., Aljoudi, H. F., Alqahtani, M. M. J., Asherson, P., . . . & Wang, Y. (2021). The World Federation of ADHD International Consensus Statement: 208 evidence-based conclusions about the disorder. *Neuroscience & Biobehavioral Reviews*, <https://doi.org/10.1016/j.neubiorev.2021.01.022>
- Faraone, S. V., & Larsson, H. (2019). Genetics of attention deficit hyperactivity disorder. *Molecular Psychiatry*, 24(4), 562–575. <https://doi.org/10.1038/s41380-018-0070-0>
- Franz, A. P., Bolat, G. U., Bolat, H., Matijasevich, A., Santos, I. S., Silveira, R. C., Procianny, R. S., Rohde, L. A., & Moreira-Maia, C. R. (2018). Attention-deficit/hyperactivity disorder and very preterm/very low birth weight: A meta-analysis. *Pediatrics*, 141(1) <https://doi.org/10.1542/peds.2017-1645>
- Goodman, R., Ford, T., Richards, H., Gatward, R., & Meltzer, H. (2000). The Development and Well-Being Assessment: Description and initial validation of an integrated assessment of child and adolescent psychopathology. *Journal of Child Psychology and Psychiatry, and Allied Disciplines*, 41(5), 645–655.
- Goodman, R., Ford, T., Simmons, H., Gatward, R., & Meltzer, H. (2000). Using the Strengths and Difficulties Questionnaire (SDQ) to screen for child psychiatric disorders in a community sample. *The British Journal of Psychiatry: The Journal of Mental Science*, 177(6), 534–539. <https://doi.org/10.1192/bjp.177.6.534>
- Groen-Blokhuis, M. M., Middeldorp, C. M., Kan, K. J., Abdellaoui, A., Van Beijsterveldt, C. E. M., Ehli, E. A., Davies, G. E., Scheet, P. A., Xiao, X., Hudziak, J. J., Hottenga, J. J., Neale, B. M., Boomsma, D. I. (2014). Attention-deficit/hyperactivity disorder polygenic risk scores predict attention problems in a population-based sample of children. *Journal of the American Academy of Child and Adolescent Psychiatry*, 53(10), 1123–1129. <https://doi.org/10.1016/j.jaac.2014.06.014>
- Han, V. X., Patel, S., Jones, H. F., & Dale, R. C. (2021). Maternal immune activation and neuroinflammation in human neurodevelopmental disorders. *Nature Reviews Neurology*, 17(9), 564–579. <https://doi.org/10.1038/s41582-021-00530-8>
- Huang, L., Wang, Y., Zhang, L., Zheng, Z., Zhu, T., Qu, Y., & Mu, D. (2018). Maternal smoking and attention-deficit/hyperactivity disorder in offspring: A meta-analysis. *Pediatrics*, 141(1) <https://doi.org/10.1542/peds.2017-2465>
- Jansen, A. G., Dieleman, G. C., Jansen, P. R., Verhulst, F. C., Posthuma, D., & Polderman, T. J. C. (2020). Psychiatric polygenic risk scores as predictor for attention deficit/hyperactivity disorder and autism spectrum disorder in a clinical child and adolescent sample. *Behavior Genetics*, 50(4), 203–212. <https://doi.org/10.1007/s10519-019-09965-8>
- Jiang, H. Y., Peng, C. T., Zhang, X., & Ruan, B. (2018). Antidepressant use during pregnancy and the risk of attention-deficit/hyperactivity disorder in the children: A meta-analysis of cohort studies. *BJOG: An International Journal of Obstetrics and Gynaecology*, 125(9), 1077–1084. <https://doi.org/10.1111/1471-0528.15059>

- Keller, M. C. (2014). Gene \times environment interaction studies have not properly controlled for potential confounders: The problem and the (simple) solution. *Biological Psychiatry*, 75(1), 18–24. <https://doi.org/10.1016/j.biopsych.2013.09.006>
- Kendler, K. S. (2019). From many to one to many—the search for causes of psychiatric illness. *JAMA Psychiatry*, 76(10), 1085–1091. <https://doi.org/10.1001/jamapsychiatry.2019.1200>
- Kendler, K. S. (2020). A prehistory of the diathesis-stress model: Predisposing and exciting causes of insanity in the 19th century. *American Journal of Psychiatry*, 177(7), 576–588. <https://doi.org/10.1176/appi.ajp.2020.19111213>
- Kim, J. H., Kim, J. Y., Lee, J., Jeong, G. H., Lee, E., Lee, S., Lee, K. H., Kronbichler, A., Stubbs, B., Solmi, M., Koyanagi, A., Hong, S. H., Dragioti, E., Jacob, L., Brunoni, A. R., Carvalho, A. F., Radua, J., Thompson, T., Smith, L., . . . , & Fusar-Poli, P. (2020). Environmental risk factors, protective factors, and peripheral biomarkers for ADHD: An umbrella review. *The Lancet Psychiatry*, 7(11), 955–970. [https://doi.org/10.1016/S2215-0366\(20\)30312-6](https://doi.org/10.1016/S2215-0366(20)30312-6)
- Leshem, R., Bar-Oz, B., Diav-Citrin, O., Gbaly, S., Soliman, J., Renoux, C., & Matok, I. (2021). Selective serotonin reuptake inhibitors (SSRIs) and serotonin norepinephrine reuptake inhibitors (SNRIs) during pregnancy and the risk for autism spectrum disorder (ASD) and attention deficit hyperactivity disorder (ADHD) in the offspring: A true effect o. *Current Neuropharmacology*, 19(6), 896–906. <https://doi.org/10.2174/1570159x19666210303121059>
- Maher, G. M., O’Keeffe, G. W., Kearney, P. M., Kenny, L. C., Dinan, T. G., Mattsson, M., & Khashan, A. S. (2018). Association of hypertensive disorders of pregnancy with risk of neurodevelopmental disorders in offspring: A systematic review and meta-analysis. *JAMA Psychiatry*, 75(8), 809–819. <https://doi.org/10.1001/jamapsychiatry.2018.0854>
- Manzari, N., Matvienko-Sikar, K., Baldoni, F., O’Keeffe, G. W., & Khashan, A. S. (2019). Prenatal maternal stress and risk of neurodevelopmental disorders in the offspring: A systematic review and meta-analysis. *Social Psychiatry and Psychiatric Epidemiology*, 54(11), 1299–1309. <https://doi.org/10.1007/s00127-019-01745-3>
- Martin, J., Hamshere, M. L., Stergiakouli, E., O’Donovan, M. C., & Thapar, A. (2014). Genetic risk for attention-deficit/hyperactivity disorder contributes to neurodevelopmental traits in the general population. *Biological Psychiatry*, 76(8), 664–671. <https://doi.org/10.1016/j.biopsych.2014.02.013>
- Martin, J., Taylor, M. J., Rydell, M., Riglin, L., Eyre, O., Lu, Y., Lundström, S., Larsson, H., Thapar, A., Lichtenstein, P. (2018). Sex-specific manifestation of genetic risk for attention deficit hyperactivity disorder in the general population. *Journal of Child Psychology and Psychiatry, and Allied Disciplines*, 59(8), 908–916. <https://doi.org/10.1111/jcpp.12874>
- McAllister, K., Mechanic, L. E., Amos, C., Aschard, H., Blair, I. A., Chatterjee, N., Conti, D., Gauderman, W. J., Hsu, L., Hutter, C. M., Jankowska, M. M., Kerr, J., Kraft, P., Montgomery, S. B., Mukherjee, B., Papanicolaou, G. J., Patel, C. J., Ritchie, M. D., Ritz, B. R., . . . , & Witte, J. S. (2017). Current challenges and new opportunities for gene-environment interaction studies of complex diseases. *American Journal of Epidemiology*, 186(7), 753–761. <https://doi.org/10.1093/aje/kwx227>
- Min, X., Li, C., & Yan, Y. (2021). Parental age and the risk of ADHD in offspring: A systematic review and meta-analysis. *International Journal of Environmental Research and Public Health*, 18(9), 4939. <https://doi.org/10.3390/ijerph18094939>
- Monroe, S. M., & Simons, A. D. (1991). Diathesis-stress theories in the context of life stress research: Implications for the depressive disorders. *Psychological Bulletin*, 110(3), 406–425. <https://doi.org/10.1037/0033-2909.110.3.406>
- Nigg, J., Nikolas, M., & Burt, S. A. (2010). Measured gene-by-environment interaction in relation to attention-deficit/hyperactivity disorder. *Journal of the American Academy of Child and Adolescent Psychiatry*, 49(9), 863–873. <https://doi.org/10.1016/j.jaac.2010.01.025>
- Obel, C., Zhu, J. L., Olsén, J., Breining, S., Li, J., Grønberg, T. K., Gissler, M., & Rutter, M. (2016). The risk of attention deficit hyperactivity disorder in children exposed to maternal smoking during pregnancy - A re-examination using a sibling design. *Journal of Child Psychology and Psychiatry, and Allied Disciplines*, 57(4), 532–537. <https://doi.org/10.1111/jcpp.12478>
- Østergaard, S. D., Trabjerg, B. B., Als, T. D., Climent, C. A., Privé, F., Vilhjálmsson, B. J., Bækvad-Hansen, M., Bybjerg-Grauholm, J., Hougaard, D. M., Nordentoft, M., Werge, T., Demontis, D., Mortensen, P. B., Borglum, A. D., Mors, O., Agerbo, E. (2020). Polygenic risk score, psychosocial environment and the risk of attention-deficit/hyperactivity disorder. *Translational Psychiatry*, 10(1), 335. <https://doi.org/10.1038/s41398-020-01019-6>
- Owens, E. B., & Hinshaw, S. P. (2013). Perinatal problems and psychiatric comorbidity among children with ADHD. *Journal of Clinical Child and Adolescent Psychology: The Official Journal for the Society of Clinical Child and Adolescent Psychology, American Psychological Association, Division*, 42(6), 762–768. <https://doi.org/10.1080/15374416.2013.785359>
- Padmanabhan, J. L., Shah, J. L., Tandon, N., & Keshavan, M. S. (2017). The “polyenviromic risk score”: Aggregating environmental risk factors predicts conversion to psychosis in familial high-risk subjects. *Schizophrenia Research*, 181, 17–22. <https://doi.org/10.1016/j.schres.2016.10.014>
- Polaczyk, G., de Lima, M. S., Horta, B. L., Biederman, J., & Rohde, L. A. (2007). The worldwide prevalence of ADHD: A systematic review and meta-regression analysis. *The American Journal of Psychiatry*, 164(6), 942–948. <https://doi.org/10.1176/appi.ajp.164.6.942>
- Polidano, C., Zhu, A., & Bornstein, J. C. (2017). The relation between cesarean birth and child cognitive development. *Scientific Reports*, 7(1), 11483. <https://doi.org/10.1038/s41598-017-10831-y>
- Lee, P. H., Anttila, V., Won, H., Feng, Y.-C. A., Rosenthal, J., Zhu, Z., Tucker-Drob, E. M., Nivard, M. G., Grotzinger, A. D., Posthuma, D., Wang, M. M.-J., Yu, D., Stahl, E. A., Walters, R. K., Anney, R. J. L., Duncan, L. E., Ge, T., Adolfsson, R., Banaschewski, T., . . . , & Belangero, S. (2019). Genomic relationships, novel loci, and pleiotropic mechanisms across eight psychiatric disorders. *Cell*, 179(7), 1469–1482.e11. <https://doi.org/10.1016/j.cell.2019.11.020>
- Rice, F., Riglin, L., Thapar, A. K., Heron, J., Anney, R., O’Donovan, M. C., & Thapar, A. (2019). Characterizing developmental trajectories and the role of neuropsychiatric genetic risk variants in early-onset depression. *JAMA Psychiatry*, 76(3), 306–313. <https://doi.org/10.1001/jamapsychiatry.2018.3338>
- Ronald, A., de Bode, N., & Polderman, T. J. C. (2021). Systematic review: How the attention-deficit/hyperactivity disorder polygenic risk score adds to our understanding of ADHD and associated traits. *Journal of the American Academy of Child & Adolescent Psychiatry*, 60(10), 1234–1277. <https://doi.org/10.1016/j.jaac.2021.01.019>
- Russell, A. E., Ford, T., Williams, R., & Russell, G. (2016). The association between socioeconomic disadvantage and attention deficit/hyperactivity disorder (ADHD): A systematic review. *Child Psychiatry and Human Development*, 47(3), 440–458. <https://doi.org/10.1007/s10578-015-0578-3>
- Rutter, M., Cox, A., Tupling, C., Berger, M., & Yule, W. (1975). Attainment and adjustment in two geographical areas. I—The prevalence of psychiatric disorder. *The British Journal of Psychiatry: The Journal of Mental Science*, 126(6), 493–509. <https://doi.org/10.1192/bjp.126.6.493>
- Rutter, M., Tizard, J., Yule, W., Graham, P., & Whitmore, K. (1976). Research report: Isle of wight studies, 1964–1974. *Psychological Medicine*, 6(2), 313–332. <https://doi.org/10.1017/s003329170001388x>
- Salum, G. A., Gadelha, A., Pan, P. M., Moriyama, T. S., Graeff-Martins, A. S., Tamanaha, A. C., Alvarenga, P., Valle Krieger, F., Fleitlich-Bilyk, B., Jackowski, A., Sato, J. R., Brietzke, E., Polaczyk, G. V., Brentani, H., de Jesus Mari, J., Do Rosário, M. C., Manfro, G. G., Bressan, R. A., Mercadante, M. T., . . . , & Rohde, L. A. (2015). High risk cohort study for psychiatric disorders in childhood: Rationale, design, methods and preliminary results. *International Journal of Methods in Psychiatric Research*, 24(1), 58–73. <https://doi.org/10.1002/mpr.1459>
- Schmitt, J., & Romanos, M. (2012). Prenatal and perinatal risk factors for attention-deficit/hyperactivity disorder. *Archives of Pediatrics & Adolescent Medicine*, 166(11), 1074–1075. <https://doi.org/10.1001/archpediatrics.2012.1078>
- Smoller, J. W., Andreassen, O. A., Edenberg, H. J., Faraone, S. V., Glatt, S. J., & Kendler, K. S. (2019). Psychiatric genetics and the structure of psychopathology. *Molecular Psychiatry*, 24(3), 409–420. <https://doi.org/10.1038/s41380-017-0010-4>

- Stojanovski, S., Felsky, D., Viviano, J. D., Shahab, S., Bangali, R., Burton, C., Devenyi, G. A., O'Donnell, L. J., Szatmari, P., Chakravarty, M. M., Ameis, S., Schachar, R., Voineskos, A. N., Wheeler, A. L. (2018). Polygenic risk and neural substrates of attention-deficit/hyperactivity disorder symptoms in youth with a history of mild traumatic brain injury. *Biological Psychiatry*, <https://doi.org/10.1016/j.biopsych.2018.06.024>
- Snijders, T. O. M. A. B., & Bosker, R. J. (1994). Modeled variance in two-level models. *Sociological Methods & Research*, 22(3), 342–363. <https://doi.org/10.1177/0049124194022003004>
- VanRyzin, J. W., Pickett, L. A., & McCarthy, M. M. (2018). Microglia: Driving critical periods and sexual differentiation of the brain. *Developmental Neurobiology*, 78(6), 580–592. <https://doi.org/10.1002/dneu.22569>
- Zeng, Y., Tang, Y., Yue, Y., Li, W., Qiu, X., Hu, P., Tang, J., Wang, H., Yang, X., Qu, Y., Mu, D. (2019). Cumulative evidence for association of parental diabetes mellitus and attention-deficit/hyperactivity disorder. *Neuroscience & Biobehavioral Reviews*, 117, 129–139. <https://doi.org/10.1016/j.neubiorev.2019.11.003>
- Zeng, Yan, Tang, Y., Tang, J., Shi, J., Zhang, L., Zhu, T., Xiao, D., Qu, Y., & Mu, D. (2020). Association between the different duration of breastfeeding and attention deficit/hyperactivity disorder in children: A systematic review and meta-analysis. *Nutritional Neuroscience*, 23(10), 811–823. <https://doi.org/10.1080/1028415X.2018.1560905>
- Zhang, T., Sidorchuk, A., Sevilla-Cermeno, L., Vilaplana-Perez, A., Chang, Z., Larsson, H., Mataix-Cols, D., & Fernandez de la Cruz, L. (2019). Association of cesarean delivery with risk of neurodevelopmental and psychiatric disorders in the offspring: A systematic review and meta-analysis. *JAMA Network Open*, 2(8), e1910236. <https://doi.org/10.1001/jama-networkopen.2019.10236>