

# AMERICAN ANTIQUITY

VOLUME 64 NUMBER 2 APRIL 1999

**SAA**  
SOCIETY FOR AMERICAN ARCHAEOLOGY

SOCIETY FOR AMERICAN ARCHAEOLOGY

## EDITORIAL STAFF OF AMERICAN ANTIQUITY

*Editor:* LYNNE GOLDSTEIN, Department of Anthropology, Michigan State University, 354 Baker Hall, East Lansing, MI 48824 Telephone: (517) 353-4704 Email: antiquity@ssc.msu.edu

*Managing Editor:* ELIZABETH FOXWELL, Society for American Archaeology, 900 Second Street, N.E., Suite 12, Washington, DC 20002-3557 Telephone: (202) 789-8200 Email: elizabeth\_foxwell@saa.org

*Associate Editor for Reviews and Book Notes:* CARLA SINOPOLI, Museum of Anthropology, University of Michigan, 1109 Geddes Avenue, Ann Arbor, MI 48109-1079 Telephone: (313) 764-0484 Email: sinopoli@umich.edu

*Coordinator for Current Research:* TERESITA MAJEWSKI, Statistical Research, P.O. Box 31865, Tucson, AZ 85751 Telephone: (520) 721-4309 Fax: (520) 298-7044 Email: sriarc@aol.com

## BOARD OF DIRECTORS OF THE SOCIETY FOR AMERICAN ARCHAEOLOGY

### *Officers*

*President:* KEITH KINTIGH, Department of Anthropology, Arizona State University, Box 872402, Tempe, AZ 85287

*Secretary:* BARBARA LITTLE, Cultural Resources, National Park Service, 1849 C Street, N.W., Suite 400, Washington, DC 20240

*Treasurer:* JEFFREY ALTSCHUL, Statistical Research, P.O. Box 31865, Tucson, AZ 85751

*Treasurer-elect:* PAUL MINNIS, Department of Anthropology, University of Oklahoma, Norman, OK 73019-0001

### *Board Members-at-Large*

KENNETH M. AMES, Department of Anthropology, Portland State University, P.O. Box 751, Portland, OR 97207-0751

REBECCA HAWKINS, Algonquin Consultants, 3327 Bishop Street, Cincinnati, OH 45220-2105

JANET LEVY, Department of Anthropology, 9201 University City Boulevard, University of North Carolina-Charlotte, Charlotte, NC 28223-1000

SARAH W. NEUSIUS, Department of Anthropology, Indiana University of Pennsylvania, Indiana, PA 15705-1081

DEBORAH M. PEARSALL, Department of Anthropology, University of Missouri, 107 Swallow Hall, Columbia, MO 65211

BONNIE W. STYLES, Illinois State Museum, 1011 East Ash Street, Springfield, IL 62703

### *Ex-officio Board Member*

TOBI A. BRIMSEK, Executive Director, Society for American Archaeology, 900 Second Street, N.E., Suite 12, Washington, DC 20002-3557

*American Antiquity* (ISSN 0002-7316) is published quarterly in January, April, July, and October by the Society for American Archaeology, 900 Second Street, N.E., Suite 12, Washington, DC 20002-3557. The journal is one of two offered as a benefit of individual membership. Subscription rates are \$175.00 for institutions in Australia, Baharain, Bermuda, Canada, Cyprus, Hong Kong, Israel, Japan, Korea, Kuwait, Libya, New Caledonia, New Zealand, Qatar, Saudi Arabia, Sultanate of Oman, Singapore, Taiwan, Thailand, United States, or Western Europe; \$50 for members in these countries who already receive the society's other journal as a membership benefit; and \$28.00 for members in Latin America or any other country not listed above. To subscribe, change an address, or order back issues, please write to the Society for American Archaeology at the address below. Prepayment is required, payable in U.S. funds. *American Antiquity* is not available for exchange. Claims for nonreceipt and for damaged copies must be made within 90 days (U.S.) or 180 days (non-U.S.) of the publication date for free replacement. Non-U.S. deliveries cannot be guaranteed; non-U.S. members and subscribers may purchase replacement copies at a 20% discount. *American Antiquity* is typeset by Oakland Street Publishing, Arlington, Virginia, and printed by Allen Press, Lawrence, Kansas.

Periodicals postage paid at Washington, DC, and additional mailing offices. POSTMASTER: Send address changes to *American Antiquity*, c/o Society for American Archaeology, 900 Second Street, N.E., Suite 12, Washington, DC 20002-3557.

# AMERICAN ANTIQUITY™

VOLUME 64 NUMBER 2 APRIL 1999

201 Editor's Corner

## FORUM

203 Replicas, Fakes, and Art: The Twentieth-Century Stone Age and Its Effects on Archaeology  
*John C. Whittaker and Michael Stafford*

## ARTICLES

215 Geographic Variation in Fluted Projectile Points: A Hemispheric Perspective  
*Juliet E. Morrow and Toby A. Morrow*

231 Point Typologies, Cultural Transmission, and the Spread of Bow-and-Arrow Technology in the Prehistoric Great Basin  
*Robert L. Bettinger and Jelmer Eerkens*

243 The Adoption of the Bow and Arrow in Eastern North America: A View from Central Arkansas  
*Michael S. Nassaney and Kendra Pyle*

265 Intentionality, Symbolic Pragmatics and Material Culture: Revisiting Binford's View of the Old Copper Complex  
*A. Martin Byers*

## REPORTS

289 Raven Skeletons from Paleoindian Contexts, Charlie Lake Cave, British Columbia  
*Jonathan C. Driver*

299 On Methods of Measuring Ceramic Uselife: A Revision of the Uselife Estimates of Cooking Vessels among the Kalinga, Philippines  
*Masakazu Tani and William A. Longacre*

309 Discovering Childhood: Using Fingerprints to Find Children in the Archaeological Record  
*Kathryn A. Kamp, Nichole Timmerman, Gregg Lind, Jules Greybill, and Ian Natowsky*

316 Analysis of Slips and Other Inorganic Surface Materials on Woodland and Early Fort Ancient Ceramics, South-Central Ohio  
*Spencer J. Cotkin, Christopher Carr, Mary Louise Cotkin, Alfred E. Dittert, and Daniel T. Kremser*

*American Antiquity* is abstracted or indexed in *Abstracts in Anthropology; Academic Search; America; Arts and Humanities Citation Index®; History and Life; Anthropological Literature; Art Index; ASTIS Bibliography; ASTIS Current Awareness Bulletin; Current Contents®/Arts and Humanities; Book Review Index; Ceramic Abstracts; Ethnoarts Index; Expanded Academic Index; GeoRef; Hispanic American Periodicals Index; Historical Abstracts; Humanities Index; International Bibliography of Social and Cultural Anthropology; International Bibliography of the Social Sciences; Middle East, Abstracts and Index; Social Sciences Citation Index®; and SportSearch.*

Copyright © 1999 by the Society for American Archaeology. All Rights Reserved.

ISSN 0002-7316

- 343 Intertaxonomic Variability in Patterns of Bone Density and the Differential Representation of Bovid, Cervid, and Equid Elements in the Archaeological Record  
*Y.M. Lam, Xingbin Chen, and O.M. Pearson*

## COMMENTS

- 363 From Social Archaeology to National Archaeology: Up from Domination  
*Karen Guthertz Lizárraga*
- 369 A Reply to Guthertz Lizárraga  
*Thomas C. Patterson*
- 370 The Flote-Tech Flotation Machine: Messiah or Mixed Blessing?  
*Jack Rossen*

## REVIEWS

- 373 Unit Issues in Archaeology: Measuring Time, Space, and Material, by Ann F. Ramenofsky and Anastasia Steffen  
*Todd Koetje*
- 374 The Archaeology of City-States: Cross-Cultural Approaches, edited by Deborah L. Nichols and Thomas H. Charlton  
*Ilene M. Nicholas*
- 375 Studies in Culture Contact: Interaction, Culture Change, and Archaeology, edited by James G. Cusick  
*Peter E. Pope*
- 376 Between Artifacts and Texts: Historical Archaeology in Global Perspective, by Anders Andren  
*Paul Farnsworth*
- 377 In Remembrance: Archaeology and Death, by David A. Poirier and Nicholas F. Bellantoni  
*Mary C. Beaudry*
- 378 At a Crossroads: Archaeology and First Peoples in Canada, edited by George P. Nicholas and Thomas D. Andrews  
*Randall McGuire*
- 379 Changing Perspectives on the Archaeology of the Central Mississippi Valley, edited by Michael J. O'Brien and Robert C. Dunnell  
*John H. House*
- 380 The Prehistory of Lums Pond: The Formation of an Archaeological Site in Delaware, by Michael Petraglia, Dennis Knepper, John Rutherford, Philip Laporta, Kathryn Puseman, Joseph Schuldenrein, and Noreen Tuross  
*Michael Stewart*
- 381 Vanishing River, Landscapes and Lives of the Lower Verde Valley: The Lower Verde Archaeological Project, by Stephanie M. Whittlesey, Richard Ciolek-Torello, and Jeffrey H. Altschul  
*Steven A. Moffitt*
- 382 Prehistoric Land-Use and Settlement of the Middle Little Colorado River Valley. The Survey of Homolovi Ruins State Park, Winslow, Arizona, by Richard C. Lange  
*Tammy Stone*

- 383 Bahamian Archaeology: Life in the Bahamas and Turks and Caicos before Columbus, by William F. Keegan  
*Charles A. Hoffman*
- 384 Hernando de Soto among the Apalachee: The Archaeology of the First Winter Encampment, by Charles R. Ewen and John H. Hann  
*David H. Dye*
- 384 The Paleolithic of Siberia: New Discoveries and Interpretations, edited by Anatoliy P. Derev'anko, Demitri B. Shimkin, and W. Roger Powers  
*Ted Goebel*
- 386 The Danish Storebælt Since the Ice Age: Man, Sea and Forest, by Lisbeth Pedersen, Anders Fischer, and Bent Aaby  
*John Steinberg*
- 387 Stonehenge: Making Space, by Barbara Bender  
*Christopher Chippindale*
- 388 Pottery in the Making: Ceramic Traditions, edited by Ian Freestone and David Gaimster  
*James J. Sheehy*

#### BOOK NOTES

- 389 Ceramics, Lithics, and Ornaments of Chaco Canyon: Analysis of Artifacts from the Chaco Project, 1971–1978. Volume 1: Ceramics; Volume 2: Lithics; Volume 3: Lithics and Ornaments, edited by Frances Joan Mathien  
*Arthur W. Vokes*
- 389 Archeology of the Mammoth Cave Area, edited by Patty Jo Watson  
*R. Bruce McMillan*
- 390 An Archaeology of Social Space: Analyzing Coffee Plantations in Jamaica's Blue Mountains, by James A. Delle  
*Sharon R. Steadman*
- 391 Lithics after the Stone Age: A Handbook of Stone Tools from the Levant, by Steven A. Rosen  
*Mark A. McConaughy*
- 391 Theorien in der Archäologie, by Reinhard Bernbeck  
*Norman Yoffee*
- 392 The Cambridge Illustrated History of Prehistoric Art, by Paul G. Bahn  
*Thomas F. Aletto*
- 392 Statistics for Anthropology, by Lorena Madrigal  
*David M. Reed*

New from  
**Alabama**

## Mississippian Towns and Sacred Spaces

Searching for an Architectural Grammar

Edited by R. Barry Lewis and  
Charles Stout

"It is most refreshing to see plazas receive the attention they deserve, in addition to mounds and palisades."—Ian W. Brown, The University of Alabama

ISBN 0-8173-0947-0 288 pages, \$29.95 paper

## A World Engraved

Archaeology of the Swift Creek Culture

Edited by Mark Williams and  
Daniel T. Elliott

"These studies make us rethink our notions of social boundaries and interactions and the scope of individual movements in the Woodland period. . . .

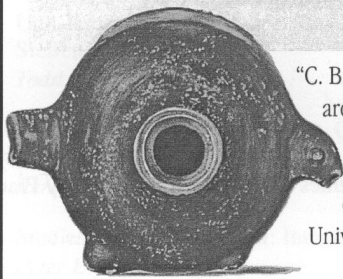
*A World Engraved* has no rivals."—John Scarry,  
UNC—Chapel Hill

ISBN 0-8173-0912-8 344 pages, \$29.95 paper

The University of Alabama Press is proud to present the series:

CLASSICS IN SOUTHEASTERN ARCHAEOLOGY

*Stephen Williams, Series Editor*



"C. B. Moore's volumes are indispensable to scholars working on the archaeology of the American South, and they are fascinating reading for anyone interested in ancient Indian cultures. Nowadays these volumes are extremely rare and virtually impossible to find. That's why Alabama's *Classics in Southeastern Archaeology* series is so important. The University of Alabama Press is to be commended for taking this project on."

—Vincas P. Steponaitis, University of North Carolina

## The Georgia and South Carolina Expeditions of Clarence Bloomfield Moore

Edited and with an Introduction  
by Lewis H. Larson

ISBN 0-8173-0941-1 312 pages, \$34.95 paper

## The Lower Mississippi Valley Expeditions of Clarence Bloomfield Moore

Edited and with an Introduction  
by Dan F. Morse and Phyllis A. Morse

ISBN 0-8173-0949-7 440 pages, \$39.95 paper

## The Moundville Expeditions of Clarence Bloomfield Moore

Edited and with an Introduction by Vernon James Knight, Jr.

ISBN 0-8173-0840-7 232 pages, \$29.95 paper

Series sponsored in part by grants from:

Southeastern Archaeological Conference  
Panamerican Consultants, Inc.  
Southeastern Archaeological Research, Inc.  
St. Augustine Archaeological Association  
Southeastern Archaeological Services  
Florida Anthropological Society  
Georgia Council of Professional  
Archaeologists

Florida Archaeological Council  
Council of South Carolina Professional  
Archaeologists  
Seminole Tribe of Florida  
South Carolina Institute of Archaeology and  
Anthropology  
A Friend of Southeastern Archaeology

Savannah River Archaeological Research  
Program  
Arkansas Archeological Survey  
Archaeological Society of South Carolina  
Arkansas Archeological Society  
Peabody Museum of Archaeology and  
Ethnology, Harvard University

THE UNIVERSITY OF ALABAMA PRESS

Orders (773) 568-1550 • Fax orders (773) 660-2235 or (800) 621-8476 • [www.uapress.ua.edu](http://www.uapress.ua.edu)