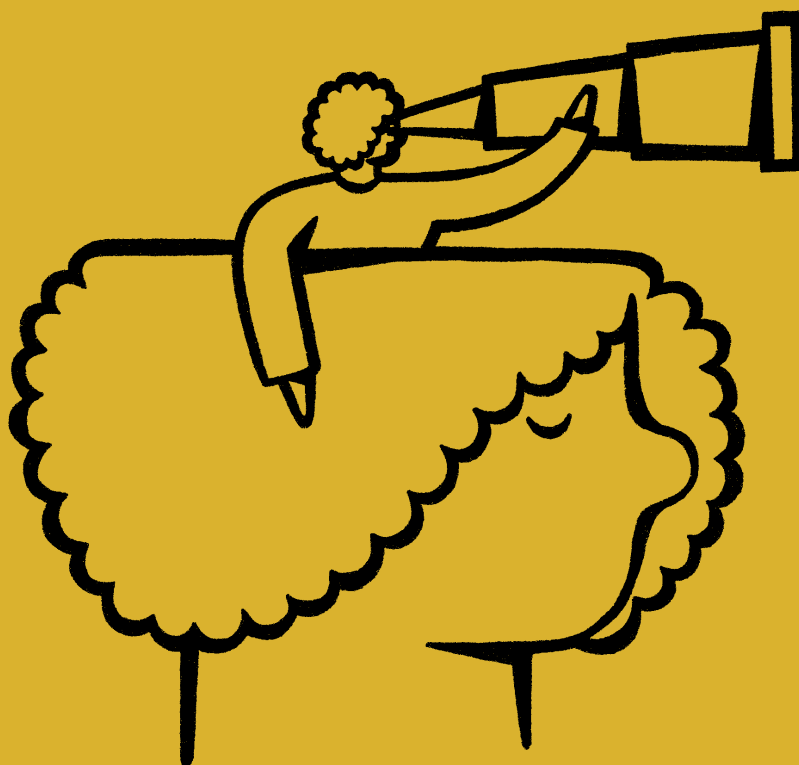


Vol 23 · No 68 · Autumn 2024 · ISSN 1477-1756

Think

Philosophy for Everyone

Edited by Stephen Law



The Royal
Institute of
Philosophy



CAMBRIDGE
UNIVERSITY PRESS

Think

Submissions

For further information
about submissions please visit:
cambridge.org/thi

How to subscribe

For more information about
subscribing to *Think* as an
individual or as a school, go
to **royalinstitutephilosophy.org/publications/**, or
e-mail **subscriptions@royalinstitutephilosophy.org** To view
sample articles online, go to **journals.cambridge.org/thi**

Prices are for three issues of *Think*
in 2024, the Spring, Summer and
Autumn issues.

Institutions

Print & electronic £248 / \$442

Electronic only £176 / \$321

Individuals and Schools

Print & electronic £29 (US\$36.96)

Electronic only £26 (US\$33.16)

If you are an institutional subscriber,
contact **journals@cambridge.org**

The annual membership is £35 (\$33)
in the USA and Canada. For students
and those unwaged, the membership
is £10 (\$22).

Contact

Journals Customer Services
Cambridge University Press &
Assessment, Shaftesbury Road,
Cambridge, CB2 8EA, UK

If posting from outside the UK, a
stamp is required.

To contact by telephone or email:
+44 (0)1223 326070
journals@cambridge.org

To subscribe from the US, Canada
or Mexico please contact: **journal_**
subscriptions@cambridge.org
1 845 353 7500 or (toll free) on
1 800 872 7423

About

Think is published on behalf of the
Royal Institute of Philosophy. The
Institute aims to bring questions
from across the whole breadth of
philosophy to the curious of every
age and background. Visit our site
at **royalinstitutephilosophy.org** to
learn more about our philosophy
events, online learning and grants
programmes.

To view sample articles online, go to
journals.cambridge.org/thi

Print

This journal issue has been printed
on FSC™-certified paper and cover
board. FSC is an independent,
non-governmental, not-for-profit
organization established to promote
the responsible management of the
world's forests. Please see www.fsc.org for information.

Printed and bound by CPI Group
(UK) Ltd, Croydon, CR0 4YY.

Cover illustration

@chrisdelorenzo

Vol 23 • No 68 • Autumn 2024 • ISSN 1477-1756

Think

Philosophy for Everyone

Edited by Stephen Law



The Royal
Institute of
Philosophy



CAMBRIDGE
UNIVERSITY PRESS

Contents

Voting: For and Against John Hyman	5
When Are You Dead, and Does it Matter? Robert Griffiths	11
Free Will: Helen Beebee Interviewed by Stephen Law Helen Beebee and Stephen Law	17
Graduation is Like Death Amie L. Thomasson	23
The Myth of Growing Up: How Childlike Traits Benefit Adults Emma Swinn and Steven Campbell-Harris	29
Compassionate and Cognitively Diverse: Why Kantian Virtue is More Generous Than You Think Carl Hildebrand	37
A Short Counter-argument to Belief in Progress Ali Pirhayati	45
The Dark Side, and the Light it Shines Deborah Hyde	49
Truth and the Future John Capps	55
Is the Universe a Dark Forest? Amar Desai	63
De-gendering and De-sexing Motherhood Suki Finn	69
What is Systemic Racism? Aaron M. Griffith	79

