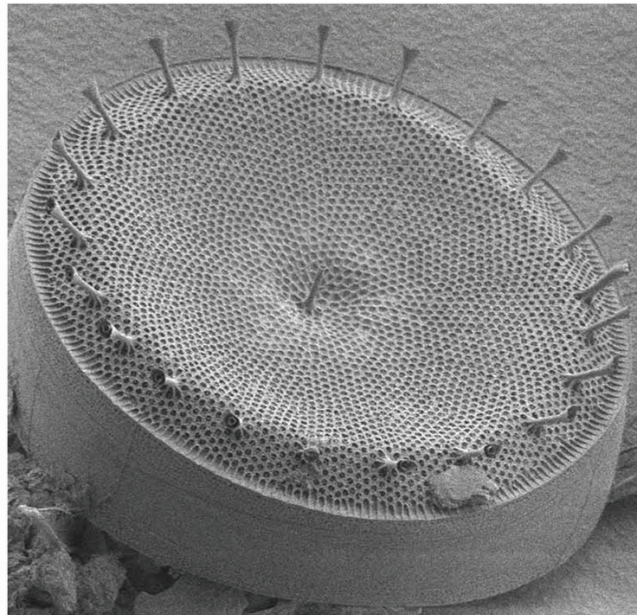
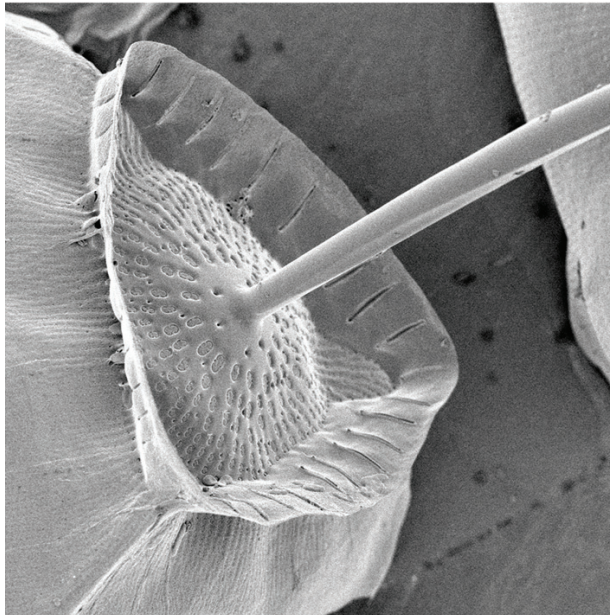
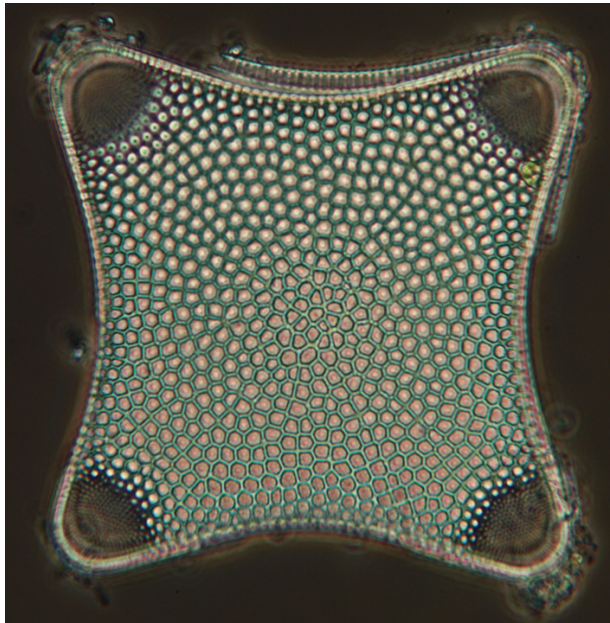


Microscopy

Volume 28 Number 1 2020 January

TODAY



Size without Compromise

The SU3900 Variable-Pressure SEM with an Extra-Large Chamber

Hitachi's SU3900 Variable-Pressure SEM features an extra-large chamber to accommodate a multitude of analytical applications: EDS, EBSD, micro XRF, in situ, heating, cooling, tensile testing, and more. Equipped with 20 ports and a robust stage, the SU3900 can handle it all! Whether your sample is large, small, heavy, magnetic, or non-conductive, the SU3900 is the instrument for your lab.

Extra-Large Chamber & Heavy-Sample Stage

Superior X/Y range of motion for up to 5 kg sample weight

Ultra-Wide NaviCam FOV

Covering full observation sample area (200 mm Φ)

Intelligent Filament Technology

Auto optimization for improved filament performance and lifetime

Fully Integrated High-Quality EDS Capability

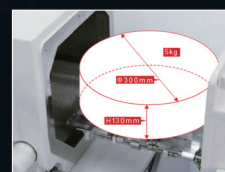
Seamless SEM and EDS operation from a single GUI



For more information:
microscopy@hitachi-hta.com



Sample: Pure Titanium
Accelerating Voltage: 5 kV
Magnification: 800x



Extra-large chamber for
max. 300 mm ϕ , 130 mm
tall, and 5 kg sample

Innovation • Synergy • Solutions



Science for a better tomorrow

Hitachi High Technologies America, Inc.
www.hitachi-hightech.com/us Tel. 800-253-3053 E-mail: microscopy@hitachi-hta.com

Expand your Knowledge of Microscopy with MSA Membership!

Whether your primary focus is in light, electron, or scanning probe microscopy, or the biological or the physical sciences, MSA takes your knowledge to the next level!

Members Receive:

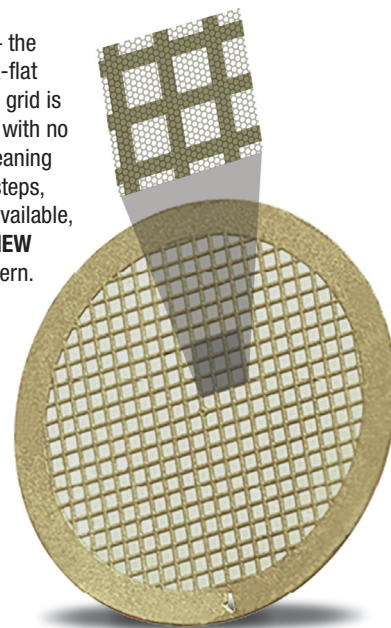
- A personal subscription to MSA's official journal, *Microscopy and Microanalysis*, and MSA's popular bi-monthly magazine, *Microscopy Today*.
- Peer Networking through the Society's Focused Interest Groups and Local Affiliated Societies.
- Discounts on books, journals and other educational materials.
- MSA Awards Programs, Scholarships, Speaker Opportunities, and more!



Join MSA Today!
Visit www.microscopy.org

The C-flat™ advantage in a new pattern

CD-flat™ — the premier ultra-flat holey carbon grid is ready to use with no additional cleaning or handling steps, and is now available, featuring a **NEW** 8/2 hole pattern.



PLEASE CONTACT US
FOR MORE INFORMATION...

Protochips NEW 8/2 HOLE PATTERN...

CD-FLAT™

The premier holey carbon sample support
for automated S/TEM imaging and metrology

Designed for Metrology

CD-Flat is designed for CD-TEM metrology of large specimens, like 3D NAND FIB lamella.

Dedicated Service

Our best-in-class service team is ready to assist you with dedicated support and fast response times.

Fast Delivery

Available now! New orders ship within 4 weeks, and regular customers can place standing orders to ship on a monthly schedule.

Specifications

EMS CATALOG NUMBER: **CDFT823-50**

Copper Grid, 300 Mesh, 3.05 mm OD

Holey Carbon, 40 nm thick

8/2 Hole Pattern (8 μm diameter,
2 μm spacing between holes)

Ships in packages of 50

EMS has it!

Electron Microscopy Sciences

P.O. Box 550 • 1560 Industry Rd.
Hatfield, Pa 19440
Tel: (215) 412-8400 • Fax: (215) 412-8450
email: info@emsdiasum.com
or stacie@ems-secure.com

OUR MAIN INTERACTIVE WEBSITE:
www.emsdiasum.com

Follow us on...



Contents

Meeting Reports

- 12 Meeting Report: Microscopy & Microanalysis 2019**
Alice Dohnalkova, Program Chair
- 16 Microscopy and Microanalysis 2020 in Milwaukee, Wisconsin**
Huolin Xin, Program Chair

Live Cell Imaging

- 18 Live Cell Imaging with Holotomography and Fluorescence**
Aubrey Lambert

Specimen Preparation

- 24 Fossil Weathering and Preparation Mimic Soft Tissues in Eocrinoid and Somasteroid Echinoderms from the Lower Ordovician of Morocco**
Farid Saleh, Bertrand Lefebvre, Aaron W. Hunter, and Martina Nohejlová

Microscopy 101

- 30 A Quick and Simple Technique for Orientating Diatoms for SEM and Light Microscopy**
Mark Webber and Elaine Humphrey

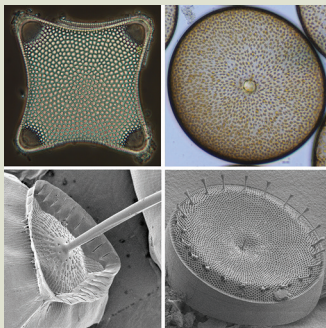
Microscopy Pioneers

- 34 Pioneers in Optics: William Hyde Wollaston**
Eric Clark

Highlights from *Microscopy and Microanalysis*

- 40 In Vivo Multivesicular Body and Exosome Secretion in the Intestinal Epithelial Cells of Turtles During Hibernation**
- 40 Quantitative Assessment of Anti-Cancer Drug Efficacy from Coregistered Mass Spectrometry and Fluorescence Microscopy Images of Multicellular Tumor Spheroids**
- 41 Electrochemical Behavior of Carbon Electrodes for in situ Redox Studies in a Transmission Electron Microscope**

About the Cover



Light (top row) and scanning electron (bottom row) micrographs of various species of diatoms. For details on sample preparation, please see the Microscopy 101 article by Webber and Humphrey.

Departments

- | | |
|--------------------------------------|--------------------------------|
| 7 Editorial | 42 NetNotes |
| 8 Carmichael's Concise Review | 48 Calendar of Meetings |
| 36 Industry News | 53 Dear Abbe |
| 38 Product News | 54 Index of Advertisers |

EMS has it!...

a comprehensive range of
Tissue-Tek® products for...

■ Tissue Processing

- Tissue-Tek VIP 6® AI Tissue Processor
- Accessories for the VIP 6 AI, VIP 6, and VIP 5 including VIP® Fixative, Paraffin, and filters

■ Embedding

- Tissue-Tek TEC 6™ Embedding Console System and Accessories
- Tissue-Tek TEC 5™ Accessories
- Nanomolds

■ Cassettes

- Tissue-Tek® Uni-Cassette® System
- Tissue-Tek® Mega-Cassette™ System

■ Coverslipping

- Tissue-Tek® Film® Coverslipper and Accessories
- Tissue-Tek® Glas™ g2 Coverslipper and Accessories

■ Consumables

- Coverslipping Film, Coverslips, and Mountant

■ Slide Staining

- Tissue-Tek® Prisma® Plus Slide Stainer
- Histo-Tek SL 6® Slide Stainer and Accessories
- Tissue-Tek® Manual Slide Staining Set

■ Advanced Staining

- Tissue-Tek® Quick Ray™ Tissue Microarray System

■ Microtomy & Cryotomy

- Tissue-Tek® Cryo3® Flex Cryostat and Accessories
- Tissue-Tek® Accu-Edge® Cryostat Disposable Blade Holders
- Tissue-Tek® Accu-Cut® SRM 300™ LT Manual Microtome
- Tissue-Tek® Accu-Cut® SRM 200™ Rotary Microtome
- Tissue-Tek® Accu-Edge® Disposable Microtome Blades

■ Grossing and Trimming

- Tissue-Tek® Accu-Edge® Trimming Blades and Handles
- Tissue-Tek® Accu-Edge® Scalpels, Scissors, and Autopsy Knives

■ Cytology Preparation

- Cyto-Tek® 2500 Cytocentrifuge

■ Printing and Storage

- Tissue-Tek® Lab Aid® Slide Filing System
- Tissue-Tek® SmartWrite® Color Slide Printer

...and much, much more!

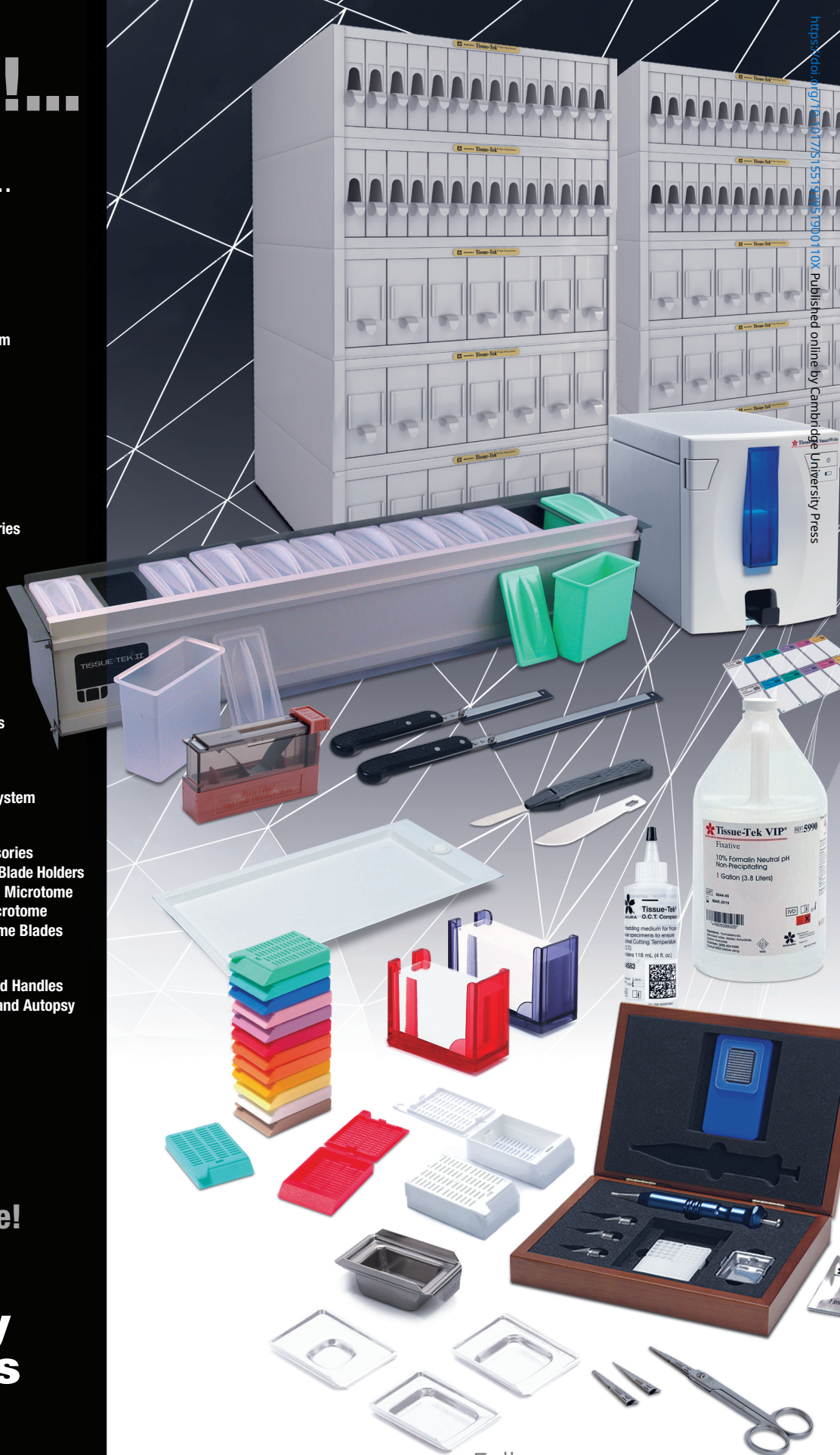
**Electron
Microscopy
Sciences**

P.O. Box 550 • 1560 Industry Rd.
Hatfield, Pa 19440

Tel: (215) 412-8400 • Fax: (215) 412-8450

email: info@emsdiasum.com

or stacie@ems-secure.com



Follow us on...

OUR MAIN INTERACTIVE WEBSITE:
www.emsdiasum.com

