

## Development of a Cathodoluminescence Detection System for the (S)TEM Demonstrating Sub-nm Spatial and Sub-meV Spectral Resolution

David J Stowe<sup>1</sup>, Levi Beeching<sup>1,2</sup>, Richard J Vince<sup>1</sup>, John Oliver<sup>1</sup>, James Parsons<sup>1</sup> and Simon A Galloway<sup>1</sup>

<sup>1</sup> Gatan U.K. Abingdon, Oxon., United Kingdom

<sup>2</sup> Canberra, Australia

The development of nanomaterials with unique optical and electronic properties offers great potential in the advancement of optoelectronic devices, telecommunications and sensor technology. Cathodoluminescence (CL) microscopy in the SEM is a characterization technique which has enriched understanding of these materials through the correlation between morphology and luminescence, with spatial resolution approaching 10nm [1]. However, there remains a growing interest in performing CL microscopy in the (S)TEM where the morphology, microstructure and local chemistry can be attributed to the luminescence properties, at a spatial resolution potentially better than 1nm [2, 3].

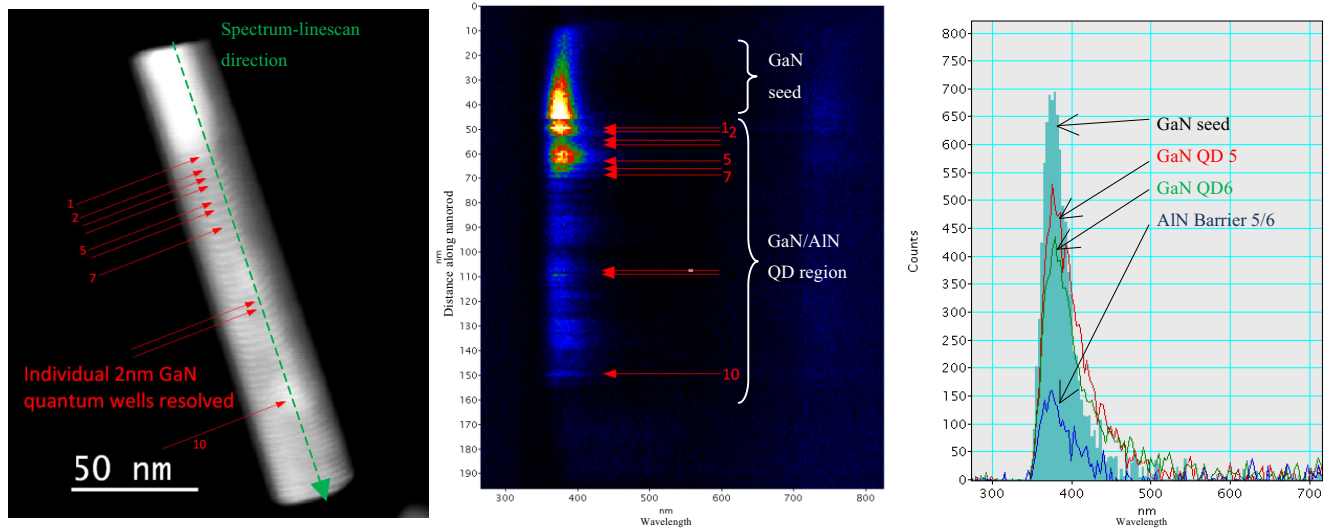
Here we present a novel CL detection system suitable for a wide range of (S)TEM instruments and show exemplar results from semiconductor heterostructure nanorods and colloidal silver nanoparticles; luminescence information with a spatial resolution on the order of 1nm is demonstrated.

Highly efficient collection of the CL signal is achieved through miniature diamond-turned mirrors integrated into the tip of a conventional cryogenic side-entry TEM holder. Mirrors above and below the specimen provide a solid angle of collection of up to 7.3steradian; a significant increase over existing systems where a single collecting mirror mounted to the TEM column is employed [4]. Light is coupled out of the holder through two NA-matched optical fibres to a Czerny-Turner optical spectrometer fitted with a photomultiplier tube and CCD providing a spectral resolution better than 0.5nm (0.4meV). In addition, the holder design is compatible with standard STEM imaging modes and allows the simultaneous acquisition of CL and EEL spectral data.

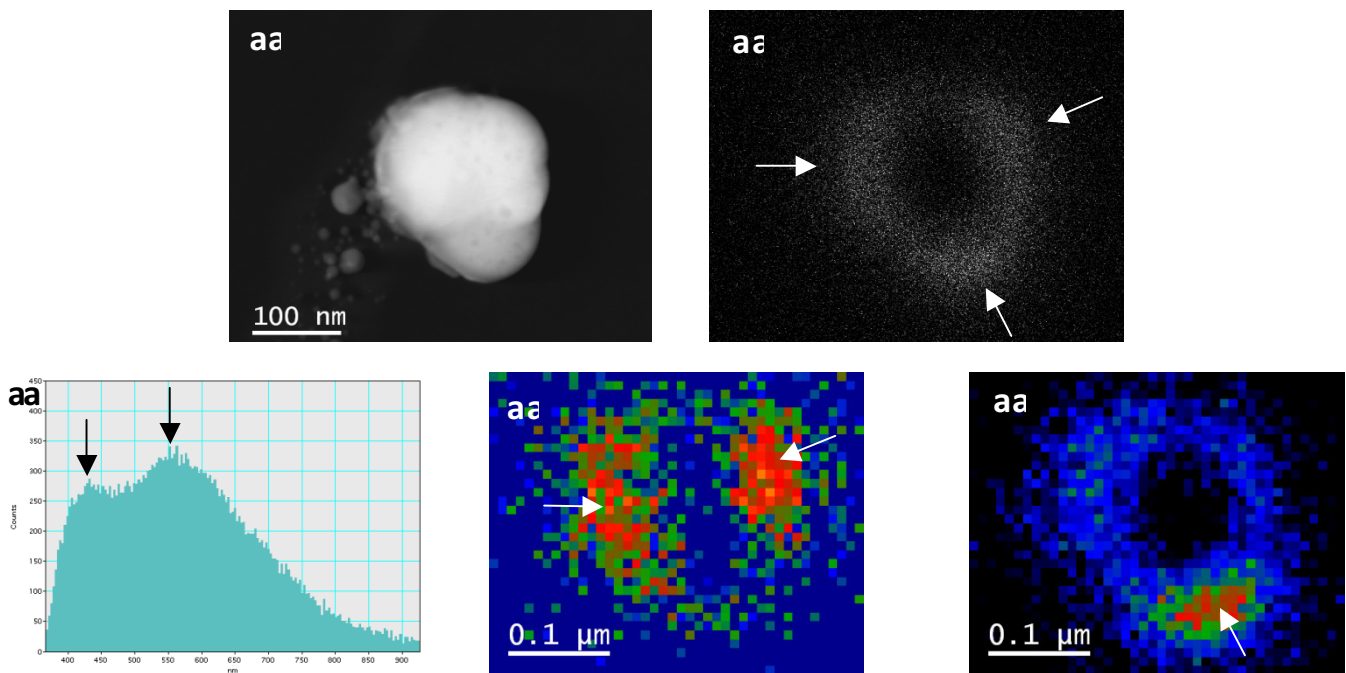
Figure 1 shows a nanorod with a periodic GaN/AlN quantum disc heterostructure with quantum disc nominal thicknesses of 2nm. A CL spectrum-linescan along the length of the nanorod clearly reveals the luminescence properties of many of the individual GaN quantum discs. Figure 2 shows two localized plasmon resonance modes excited by the primary electron beam of the TEM to be spatially and spectrally resolved by CL microscopy.

### References:

- [1] CE Norman, Proc. BIAMS 2000, Solid State Phenom. **78-79** (2000) p. 19
- [2] SK Lim *et al*, Nano Letters **9** 11 (2009) p. 3940
- [3] LF Zagonel *et al*, Nano Letters **11** 2 (2011) p. 568
- [4] HP Strunk *et al*, J. of Microscopy **224** 1 (2006) p. 79



**Figure 1.** Left: HAADF STEM image of nanorod with GaN/AIN heterostructure (2nm quantum discs); GaN shows up bright. Centre: CL spectrum-linescan acquired along the length of the nanorod (indicated by the green line in the HAADF image); red arrows indicate quantum wells with directly attributable luminescence spectra; sample temperature: 90K. Right: selected CL spectra showing quantum discs 5 and 6 to be resolved spatially; specimen courtesy of Prof. R Myers, Ohio State University.



**Figure 2.** a) HAADF image of an egg-shaped colloidal silver nanoparticle; b) panchromatic cathodoluminescence image (acquired simultaneously to the HAADF image) displaying three 'bright' resonance nodes (indicated by arrow markers); c) cathodoluminescence spectrum with two peaks corresponding to spectrally discrete resonance modes at 430 and 510nm; d) and e) cathodoluminescence band pass images at 430 and 550nm  $\pm$ 40nm extracted from parent spectrum-image showing resonance modes are separated spatially and spectrally.