

Effect of phytochemicals on phase II enzyme expression in infant human primary skin fibroblast cells

Eliz Warwick¹, Aedín Cassidy¹, Bryan Hanley², Zeina E. Jouni² and Yongping Bao^{1*}

¹Department of Nutrition, Norwich Medical School, University of East Anglia, Norwich NR4 7TJ, UK

²Mead Johnson Nutrition, Evansville, IN, USA

(Submitted 2 September 2011 – Final revision received 25 January 2012 – Accepted 26 January 2012 – First published online 19 March 2012)

Abstract

Phase II metabolising enzymes enable the metabolism and excretion of potentially harmful substances in adults, but to date it is unclear whether dietary phytochemicals can induce phase II enzymes differently between adults and infants. We investigated the expression of phase II enzymes in an *in vitro* model of primary skin fibroblasts at three different developmental stages, 1 month, 2 years and adult, to examine potential differences in age-related phase II enzymes in response to different phytochemicals (5–20 µM) including sulphoraphane, quercetin and catechin. Following phytochemical treatment, a significant increase in mRNA of glutathione *S*-transferase A1 (GSTA1) and NAD(P)H:quinone oxidoreductase 1 (NQO1) was observed, with the most marked increases seen in response to sulphoraphane (3–10-fold for GSTA1, $P=0.001$, and 6–35-fold for NQO1, $P=0.001–0.017$). Catechin also induced 3–5-fold changes in NQO1 transcription, whereas quercetin had less effect on NQO1 mRNA induction in infant cells. Moreover, NQO1 protein levels were significantly increased in 2-year-old and adult cell models in response to sulphoraphane treatment. These results suggest that metabolic plasticity and response to xenobiotics may be different in infants and adults; and therefore the inclusion of phytochemicals in the infant diet may modulate their induction of phase II metabolism, thereby providing increased protection from potentially harmful xenobiotics in later life.

Key words: Phase II enzymes: Phytochemicals: Sulphoraphane: Quercetin: Catechin fibroblast cells

Interest in phytochemicals has intensified because of their potential preventative effects on chronic diseases including CVD and cancer. A wealth of epidemiological and dietary intervention studies provides evidence indicating a protective effect of plant-based diets for CVD and cancer in adults^(1–3). Although the mechanisms underlying the potential health benefits remain unclear, phytochemicals are thought to possess antioxidant and anti-inflammatory effects, act as cell signalling molecules, arrest the cell cycle, and most importantly manipulate detoxification phase I and phase II enzymes^(4–6). Phase I enzymes mainly consist of cytochrome enzymes responsible for mixed-function oxidase activity, whereas phase II enzymes are frequently conjugation reactions necessary for drug metabolism or further metabolism of phase I enzyme products. Phase II metabolising enzymes such as glutathione *S* transferases (GST), UDP-glucuronosyltransferases (UGT) and NAD(P)H:quinone oxidoreductase 1 (NQO1) can increase the excretion rate of harmful xenobiotics in the adult⁽⁷⁾, but to date it is unclear whether dietary phytochemicals modulate the expression of these key protective phase II enzymes at different developmental stages with metabolic programming effects.

The concept of metabolic programming (imprinting) has gained widespread acceptance over the last two decades; however, many of the studies have concentrated on primary metabolic events leading to later-stage obesity, and other metabolic disorders⁽⁸⁾. The potential effect of early exposure to dietary components of phytochemicals has been comparatively little studied. The question that arises is ‘whether living in a given nutritional environment conditions the genome or predisposes it to better or faster adjustment to a new or similar nutritional situation later in one’s lifetime’⁽⁹⁾. In other words, can phase I or phase II response be ‘programmed’ by early exposure to phytochemicals and will this have a beneficial consequential effect on subsequent exposures?

The effect of lifetime exposure to soya protein has been shown to result in alterations in the expression of a number of cytochrome P450 enzymes in rats⁽¹⁰⁾. Early soya exposure in rats has a differential effect on the constitutive expression of certain cytochrome P450 including CYP3A⁽¹¹⁾. However, up-regulation of CYP3A expression in rats fed soya for a short period post-weaning and the lack of induction in rats fed soya during gestation and lactation suggest that the

Abbreviations: GSTA1, glutathione *S*-transferase A1; NQO1, NAD(P)H:quinone oxidoreductase 1; UGT, UDP-glucuronosyltransferase; WST-1, water-soluble tetrazodiam salt.

* **Corresponding author:** Y. Bao, email y.bao@uea.ac.uk

effect is a direct consequence of exposure to components in soya protein isolate rather than any imprinting or programming effect⁽¹²⁾.

Despite the known potential health benefits of fruit and vegetable consumption such as the '5-a-day' message, dietary levels in adults and children are often sub-optimal⁽¹³⁾. Consumption in infants is currently unknown and is an area that warrants further investigation. Infants are not challenged with the majority of plant bioactive compounds until they are weaned, when non-milk-based foods are introduced. The infant body, specifically the liver and kidneys, needs to be able to express phase I and phase II metabolising enzymes to prevent the accumulation of potential toxins. A recent study showed that a functional polymorphism of a phase II NQO1 gene Pro187Ser; rs1800566 was significantly associated with fetal growth, possession of the fetal Ser allele protected against fetal growth retardation in the offspring of moderate smokers but not heavy smokers⁽¹⁴⁾. If the effects of phytochemicals on phase II enzymes are positive, there is the potential to optimise infant nutrition at an early stage of development via the inclusion of bioactive phytochemicals in the diet, which may exert protective effects including the detoxification of xenobiotics. Liver cells from different ages would be the ideal models for this type of study, but they are not commercially available. Therefore, in the present study, an *in vitro* human skin cell model, representative of early- and late-stage infancy, in addition to a comparative adult model, was used to investigate the expression of protective phase II enzymes in response to key phytochemicals found in appreciable levels in the early infant diet. We focused on quercetin and catechin, since these polyphenols are present in many fruits and vegetables in addition to sulphoraphane, an isothiocyanate found in cruciferous vegetables such as broccoli, cauliflower, brussels sprouts and cabbages^(15,16). Plasma levels of quercetin and tea catechins in humans are predominantly in the low- μM concentration range although it is likely that some of their metabolites are present in the systemic circulation at levels much higher than those of their parent compounds^(16–19). It is estimated that the average intake of polyphenols through supplementation ranges from 50 to 300 mg/d, which is approximately 100 times higher than the intake traditionally obtained through the diet^(15,20). From previous human studies, available data suggest maximal plasma sulphoraphane levels of 7.4 μM ⁽²¹⁾. Therefore, in our cell culture experiments, we employed a range of phytochemical concentrations from 5 to 20 μM .

Materials and methods

Materials

Sulphoraphane (4-methylsulphonylbutyl isothiocyanate; purity, 98%) was purchased from LKT laboratories (Alexis Biochemicals), while catechin and quercetin were purchased from Sigma. For cell cytotoxicity assays, water-soluble tetrazolium salt (WST-1) reagent was obtained from Roche, while for quantitative PCR, Bioscript RT kit, random hexamers, RNase

out inhibitor and master mix reagent kit were purchased from Bioline, Promega, Invitrogen and PrimerDesign, respectively. Rabbit polyclonal GSTA1 was obtained from Calbiochem and goat polyclonal NQO1 and UGT1A were obtained from Santa Cruz. All other materials and reagents, unless otherwise specified, were purchased from Sigma Aldrich.

Cell culture

For the purpose of the present study, 1-month-old (CCD-32sk), 2-year-old (CCD-1092sk) and adult (142Br) normal primary human skin fibroblast cells were obtained from the ATCC (32sk and 1092sk) and ECACC (142Br). All cells were cultured in minimum essential medium with GlutEMAX-1 (GIBCO) media supplemented with 10% fetal bovine serum (V/V), 1% Pen/Strep antibiotics and 1% non-essential amino acids (GIBCO) kept at 37°C in a humidified atmosphere with 5% CO₂. Cells were media-changed every 48 h or subcultured as appropriate and used within ten passages.

Cytotoxicity assay

Cell cytotoxicity following phytochemical treatment was evaluated by the WST-1 assay which measures the activity of mitochondrial dehydrogenases. Tetrazolium salts are cleaved by the dehydrogenases of viable cells to produce formazan and the change of absorbance is detected. Briefly, cells were seeded at 2×10^4 /well onto a ninety-six-well plate and allowed to adhere overnight. Cells were then treated for 24 h (time point previously determined to obtain maximal signal-to-background ratio; data not shown) with 5, 10, 25, 50 or 100 μM -sulphoraphane, catechin or quercetin plus no treatment control. At the end of the treatment period, 10 μl of WST-1 reagent were added to each well, and the plate was incubated for 2 h at 37°C in a humidified atmosphere of 95% air, 5% CO₂. The absorbance was measured at 450 nm using a Plate Reader (BMG Labtech) and the average of three blank wells containing medium and WST-1 reagent alone was subtracted from each absorbance reading, and the resulting values were used for data analysis.

RNA extraction and analysis by TaqMan real-time PCR

Total cellular RNA was isolated using a Genelute Mammalian Total RNA Kit (Sigma-Aldrich) according to the manufacturer's instructions. Total RNA was quantified (260:280 nm ratio) using a NanoDrop spectrophotometer (Labtech International) and up to 1 μg RNA was reverse-transcribed using a Bioscript RT kit plus random hexamers and RNase out inhibitor expression of mRNA was determined by TaqMan real-time PCR using the ABI prism 7500 Sequence Detection System (Applied Biosystems). PCR were carried out in a ninety-six-well plate using the master mix reagent kit in a total volume of 25 μl /well consisting of 1 or 5 ng of sample as appropriate, 100 nmol/l probe labelled with 5' reporter dye 6-carboxyfluorescein and 3' quencher 6-carboxytetramethylrhodamine and 200 nmol/l forward and reverse primers (Table 1). Standard curves were constructed with serial dilutions of

Table 1. Reference and target primer probe sequences

Gene		Sequences (5'–3')
<i>NQO1</i>	Forward	TGGACCGAGCTGGAAAACC
	Reverse	GCCGTCAGCTATTGTGGATATG
	Probe	FAM-CCTTTACCAGATGCTGACTGGCACTGG-TAMRA
<i>GSTA1</i>	Forward	CAGCAAGTGCCAATGGTTGA
	Reverse	TATTTGCTGGCAATGTAGTTGAGAA
	Probe	FAM-TGG TCT GCA CCA GCT TCA TCC CAT C-TAMRA
<i>UGT1A1</i>	Forward	GGTACTGTCCAGACCTATTGA
	Reverse	TAGTGGATTTGGTGAAGGCAGTT
	Probe	FAM-ATTACCCTAGGCCCATCATGCCCAATATG-TAMRA
<i>18S rRNA</i>	Forward	GGCTCATTAAATCAGTTATGGTTCCT
	Reverse	GTATTAGCTCTAGAATTACCACAGTTCCA
	Probe	FAM-TGGTCGCTCGCTCCTCTCCAC-TAMRA

NQO1, NAD(P)H:quinone oxidoreductase 1; FAM, 6-carboxyfluorescein; TAMRA, tetramethylrhodamine; *GSTA1*, glutathione S-transferase A1; *UGT1A1*, UDP-glucuronosyltransferase 1A1; *18S rRNA*, 18S ribosomal RNA.

control sample and analysed using ABI software 1.3.1. Data were normalised against a housekeeping gene, 18S ribosomal RNA. Gene expression was quantified by the $^{-\Delta\Delta C_t}$ method⁽²²⁾ where fold of induction = $2^{-\Delta\Delta C_t}$ (control)– C_t (treatment).

Preparation of protein extracts and immunoblotting

Treated and control cells were washed twice with ice-cold PBS and then incubated for 30 min in the Nonidet P-40 buffer (20 mM-Tris–HCl, pH 8, 150 mM–NaCl, 10% glycerol, 1% Nonidet P-40) containing one tablet of complete mini-EDTA-free protease inhibitor cocktail (Roche) in 10 ml buffer. Cells were harvested by scraping and the homogenate was centrifuged at 13 684 g at 4°C for 15 min. The supernatants were collected and frozen at –80°C. The protein concentrations were determined using Bradford reagent (Sigma) according to the manufacturer's instructions. Then, 20 µg of protein lysate was resolved by 10% SDS-PAGE and transferred onto polyvinylidenedifluoride membranes (Bio-Rad) with a semi-dry transfer cell (Trans-Blot; Bio-Rad). Membranes were blocked for 1 h at room temperature or overnight at 4°C with Marvel fat-free milk powder (5% w/v), Tween 20 (0.05%, v/v) in PBS. Proteins of interest were visualised by exposing the membranes to primary antibodies in milk for 2 h at room temperature. Dilutions of antibodies were rabbit polyclonal *GSTA1*, 1:2000, goat polyclonal *NQO1* 1:1000 and goat polyclonal *UGT1A* 1:1000. Following primary antibody incubation, the membranes were incubated with suitable horseradish peroxidase-conjugated secondary antibody and signals were detected using an enhanced chemiluminescence kit (GE Healthcare) according to the manufacturer's instructions. β-Actin level was determined as the loading control and bands were visualised using Fujifilm LAS3000 Imager.

Statistical analyses

Statistical analyses were performed using SPSS (version 13.1). To assess the effects of various treatments, the data were first examined for normal distribution using the Shapiro–Wilk test ($P < 0.05$). Following this, one-way ANOVA with *post hoc*

Dunnett's *t* test was employed to assess the significant interaction of cell type with treatment. If data were deemed non-normally distributed, the Kruskal–Wallis non-parametric test was used to examine significant interactions. Differences were considered significant if $P < 0.05$. Results are expressed as means with standard errors of three separate experiments, unless otherwise stated.

Results

Cytotoxicity of quercetin, catechin and sulphoraphane

In this *in vitro* study, we examined a range of phytochemical concentrations (1–100 µM) in cell models to examine dose–response and determine optimal concentrations for future experiments. WST-1 cell viability experiments demonstrated that cells isolated from 1-month-old (Fig. 1(a)) and adult (Fig. 1(c)) donors tolerate up to 50 µM concentrations of all candidate phytochemicals with at least 80% viability. Cells isolated from the 2-year-old donor (Fig. 1(b)) tolerate up to 50 µM concentrations of quercetin and catechin with at least 80% viability. However, incubation with sulphoraphane induced significant cell death at the 50 and 100 µM concentration range. On the basis of these data, further experiments were conducted at 5, 10 and 20 µM to avoid the deleterious effects of high phytochemical doses on cells.

Quercetin differentially affects mRNA phase II enzymes in 1-month-old cell model

Cells from the 1-month-old model incubated with quercetin (Fig. 2(a), 1 month) demonstrated significant dose–response up-regulation of GST (3.9-fold) compared to control ($P = 0.004$). Similarly, and at the highest concentration of quercetin (20 µM), cells from the adult cell model also demonstrated up-regulation of GST (7.4-fold) and UGT (5.5-fold), $P = 0.001$ and 0.006, respectively (Fig. 2(a), adult). In contrast, cells obtained from the 2-year-old cell model did not demonstrate any significant changes in GST, UGT or *NQO1* mRNA expression at all quercetin concentrations tested (Fig. 2(a), 2 year).

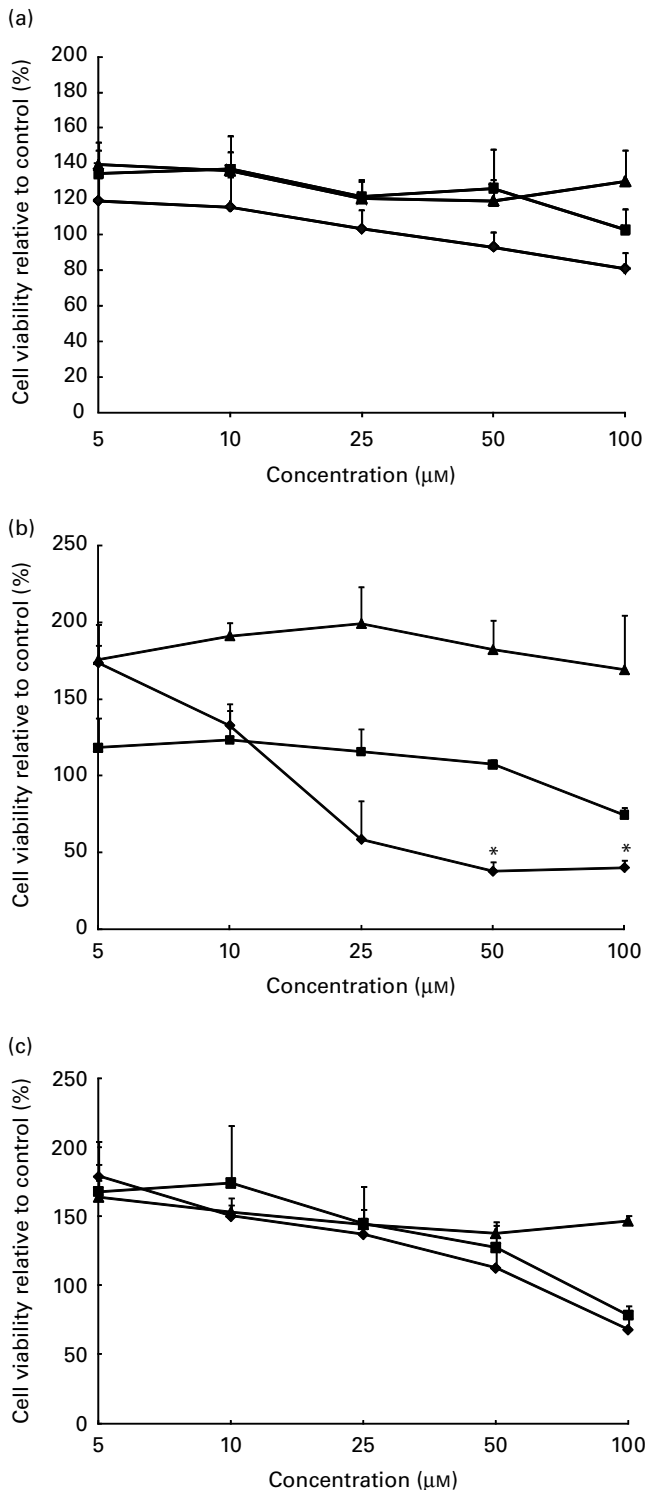


Fig. 1. Cell viability in (a) 1-month-old, (b) 2-year-old and (c) adult cell models following phytochemical treatments. Following treatment with sulphoraphane (◆) significant loss of cell viability was observed in the 2-year-old cell model compared to control cells. No other significant changes in cell viability were observed in response to treatment with catechin (■) or quercetin (▲). Values are means (percentage of control) of at least three individual experiments, with their standard errors represented by vertical bars. *Mean values indicate significantly decreased cell viability when compared with control ($P < 0.05$; one-way ANOVA and *post hoc* Dunnett's *t* test).

NAD(P)H:quinone oxidoreductase 1 mRNA expression in adult cell lines is significantly up-regulated in response to catechin

Cells from the adult cell model (Fig. 2(b), adult) demonstrated dose–response up-regulation of NQO1 mRNA in response to catechin treatment ($P=0.001$, with UGT also exhibiting a trend towards an increase. The 1-month-old cell model and 2-year-old cell model mRNA expression was not significantly affected.

Infant cell lines exhibit significantly increased expression of NAD(P)H:quinone oxidoreductase 1 mRNA following sulphoraphane treatment

Cells from the adult cell model (Fig. 2(c), adult) demonstrated a significant increase in GST, UGT and NQO1 mRNA levels; in the infant cell models in particular, significant increases in NQO1 (6–35-fold increases) were observed following sulphoraphane treatment (Fig. 2(c), 1 month and 2 year) compared to control. However, GST mRNA expression was also significantly increased in response to sulphoraphane in infant cell models, but not to the same extent as NQO1.

Protein expression in infant cell models

In the 1-month-old cell model, the expression of NQO1, UGT and GST did not demonstrate significant responses to the three phytochemicals. In the 2-year-old cell model, protein expression of all enzymes was affected by phytochemical exposure. In addition, the expression of UGT, GST and NQO1 proteins were significantly up-regulated in response to higher doses of catechin and sulphoraphane $P < 0.01$ (Fig. 3(b)). In the adult cell model, significant up-regulation of NQO1 protein expression was observed in response to sulphoraphane, $P=0.03$ (Fig. 3(c)). Expression of UGT was affected by sulphoraphane treatment, demonstrating a trend towards a dose–response, while GST expression increased in response to both quercetin and catechin (Fig. 3(c)).

Discussion

The mechanisms underlying the health benefits of phytochemicals are multifactorial with significant interest in their ability to influence the levels of detoxification enzymes⁽²³⁾. However, the effect of phytochemicals such as polyphenols and isothiocyanates on the expression of common phase II enzymes in infants is unknown. We used primary skin fibroblast cells as a model for infant and adult phase II metabolism since an optimal model, such as a model based on liver cells, is not available. Skin fibroblasts are commonly used in studies of age-related differences^(24,25). The skin, along with the liver, gut and lungs are constantly exposed to xenobiotics in the environment and therefore express (albeit at different levels) protective phase II enzymes to prevent the build-up of potentially harmful xenobiotics.

In the present study, following treatment with quercetin, cells isolated from adult and infant donors (1-month-old model)

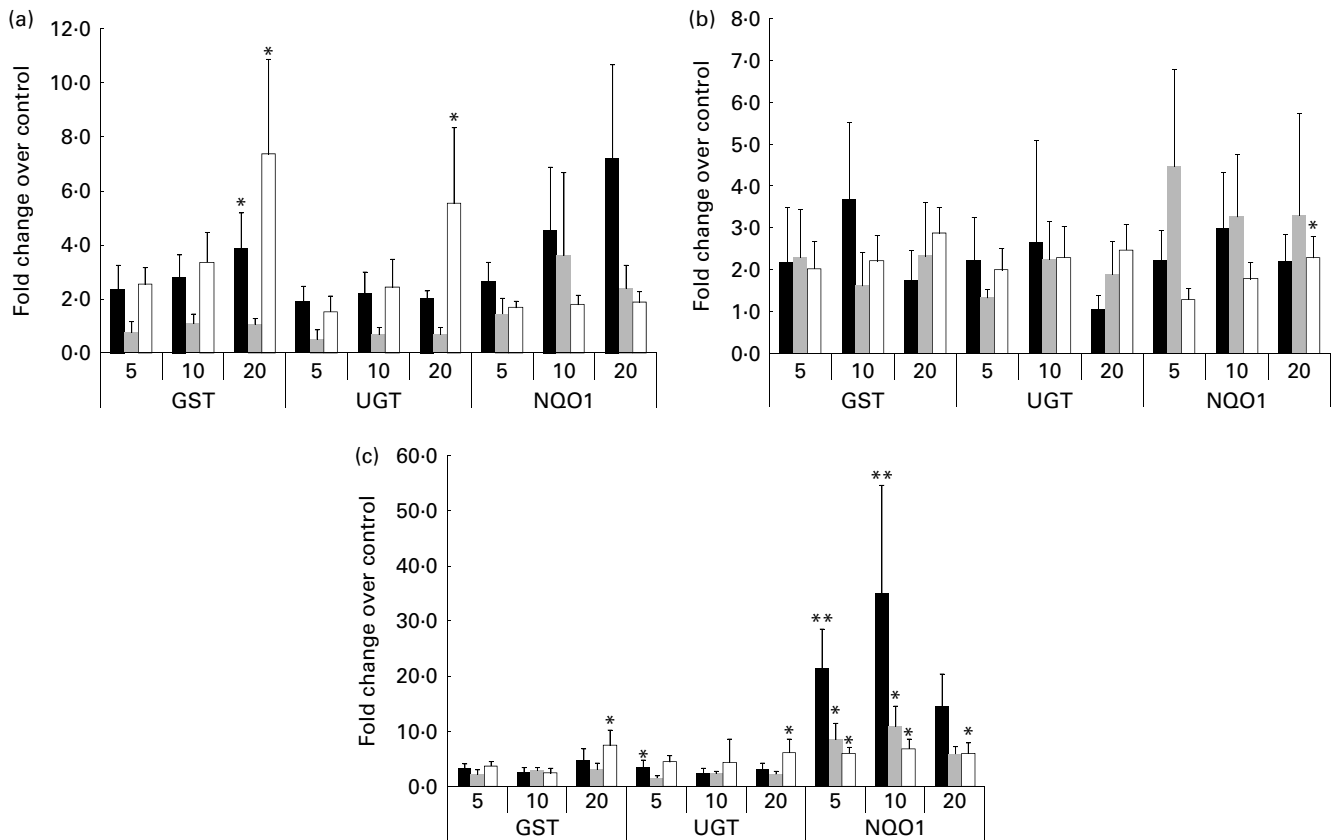


Fig. 2. Expression of mRNA in response to phytochemical treatment. Treatment with (a) quercetin: the adult cell model demonstrated a significant dose-dependent increase in both glutathione *S*-transferases (GST) and UDP-glucuronosyltransferases (UGT) mRNA expression ($P=0.001$ and 0.006 , respectively). Expression of GST and NAD(P)H:quinone oxidoreductase 1 (NQO1) mRNA was significantly increased within the 1-month-old (■) cell model but not the 2-year-old (▒) cell model. Following (b) catechin treatment, the infant cell models demonstrated significant increases in GST and NQO1 mRNA ($P=0.019$). (c) Sulphoraphane treatment: in the adult (□) cell line, a significant increase in GST, UGT and NQO1 mRNA was observed ($P=0.022$), in addition to significant increases in GST and NQO1 in the infant cell models ($P<0.05$). Values are means of at least three individual experiments, and normalised against control, with their standard errors represented by vertical bars. Mean values indicate significantly increased expression relative to control: * $P<0.05$, ** $P<0.01$; one-way ANOVA and *post hoc* Dunnett's *t* test.

demonstrated significant up-regulation of NQO1 and GST mRNA compared to controls. However, the induction of these enzymes was not significant in the 2-year-old model, suggesting a difference in the age-related response to phytochemicals. In the adult cells, this increase in expression was also translated for NQO1 and GST protein ($P=0.034$), with a similar trend demonstrated for the 1-month-old cell model. Tanigawa *et al.*⁽²⁰⁾ and Valerio *et al.*⁽²⁶⁾ also demonstrated the ability of quercetin to induce NQO1 mRNA in the hepatoma cell line HepG2 and breast carcinoma cell line Michigan Cancer Foundation-7 (MCF-7), respectively, which supports our present findings. Following treatment with catechin, significant increases in the levels of NQO1 mRNA were observed in the adult cell model. In addition, significant up-regulation in the expression of GST and NQO1 protein was observed in response to higher doses of catechin in the 2-year-old cell model. To our knowledge, no previous studies have used a similar comparative experimental approach, which emphasises the novelty of the present study. However, Muzolf-Panek *et al.*⁽²⁷⁾ demonstrated the ability of green tea catechins, such as epigallocatechin gallate and gallic catechin gallate, to induce electrophile responsive element-mediated detoxifying

gene expression of NQO1 in a mouse hepatoma cell line, supporting our findings.

Treatment with sulphoraphane in the infant cell models demonstrated a significant increase in both GST and UGT and a particularly strong response in NQO1 mRNA. The same pattern of expression was observed in the adult cell model, with significant increases in GST and UGT mRNA and a more pronounced increase in NQO1. These findings were translated into protein expression changes, with sulphoraphane treatment inducing significant up-regulation of NQO1 and UGT protein in the 2-year-old and adult cell line in particular. The phase II enzyme inducing effects of sulphoraphane have been well established in a variety of cell types including bladder cells⁽²⁸⁾, colon cell lines⁽²⁹⁾, prostate cells⁽³⁰⁾ and in vascular cells⁽³¹⁾. Marrot *et al.*⁽³²⁾ used neonatal human skin keratinocytes and melanocytes to assess the induction of phase II genes. They found that sulphoraphane was the most potent inducer of NQO1. In addition, Dinkova-Kostova *et al.*⁽³³⁾ demonstrated in human skin punch samples as well as in mouse skin epidermis that sulphoraphane, in the form of broccoli sprout extract, induced NQO1 enzyme activity in a dose-dependent

manner. The induction of phase II enzymes by sulphoraphane was mainly through the nuclear factor-E2-related factor 2-antioxidant responsive element pathway^(34–36). Although the mechanism by which polyphenols influence the phase II gene expression is not fully understood, the activation of nuclear factor-E2-related factor 2 may play an important role⁽²⁰⁾.

Phase II metabolising enzymes include many families of enzymes such as GST, UGT, N-acetyltransferases and sulphotransferases. It is known that GST, UGT and NQO1 protect against potentially harmful xenobiotics in the adult, but to date it is unclear whether components in the diet, like phytochemicals, can aid in the rapid development of protective phase II enzymes in infants. Infants are not challenged with

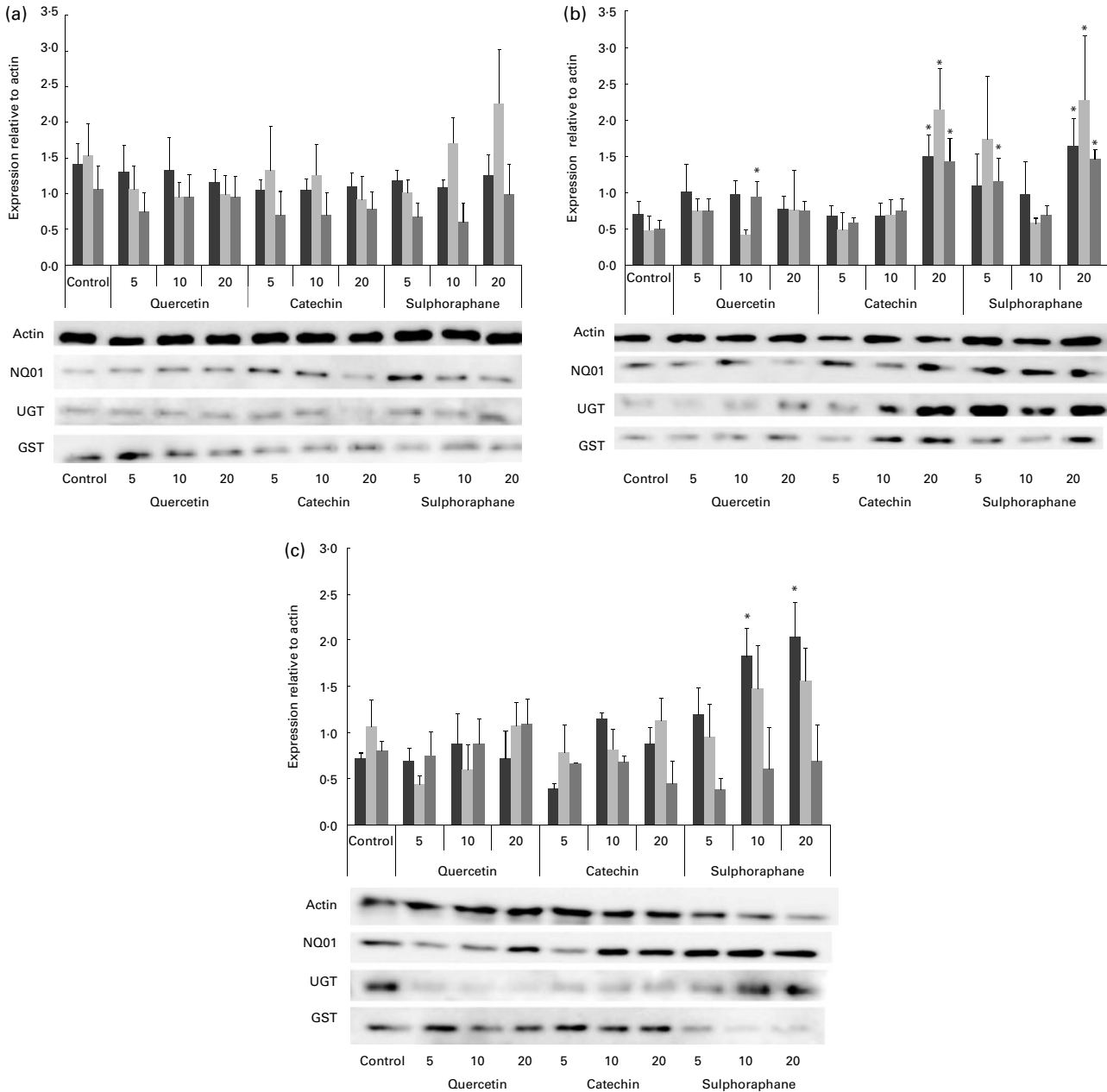


Fig. 3. Effect of phytochemical treatment on phase II enzyme protein expression. Immunoblotting for effect of (a) 24h phytochemical treatment (control, 5, 10 and 20 μM as indicated) and protein expression of phase II enzymes in the 1-month-old cell model. No significant effects of phytochemicals were observed in this cell model, immunoblotting for effect of (b) 24h phytochemical treatment and protein expression of phase II enzymes in the 2-year-old cell model. Here, higher concentrations of catechin and sulphoraphane induce significant increases in protein expression (**P*<0.01), immunoblotting for effect of (c) 24h phytochemical and protein expression of phase II enzymes in the adult cell model. Protein expression was significantly increased in response to sulphoraphane treatment alone (**P*=0.034). All membranes were stripped and re-probed for anti-β-actin antibody to ensure equal loading. Experiments were repeated at least three times and the results are expressed as the ratio of protein of interest relative to the expression of β-actin. ■, Glutathione S-transferases (GST); ■, UDP-glucuronosyltransferases (UGT); ■, NAD(P)H:quinone oxidoreductase 1 (NQO1).

the majority of bioactive compounds in foods until they are weaned when non-milk-based foods are introduced. The infant body (liver and kidneys in particular) needs to be able to express metabolising enzymes to prevent the accumulation of potential toxins. The present study demonstrates that the expression of protective phase II enzymes can be induced by phytochemicals found commonly in the infant diet. Of particular importance seems to be the expression of NQO1 in response to sulphoraphane treatment. At the mRNA protein levels, the expression of NQO1 in the infant and adult cell models has been particularly inducible in comparison to other enzymes. The concentrations used (5–20 μM) in this study may be higher than the levels that could be achieved in human plasma through a normal diet. However, the human diet contains a large number of structurally different polyphenols, and their corresponding metabolites can attain high levels in plasma, which may also contribute to their bioactivities. Future studies are required to examine potential interactions between these phytochemicals in relation to phase II metabolism. In summary, there was a difference in the age-related response to phytochemical treatment in cell culture models, i.e. the response to phytochemicals at the mRNA level in the adult cell line was greater than that in either the 2-year-old or the 1-month-old cell model. The 1-month-old cell line responded to the phytochemical treatments especially at the mRNA level, although there was less of an effect at the protein expression level. These results suggest that the inclusion of dietary phytochemicals in the infant diet may help to induce the expression of key protective metabolic pathways such as phase II enzymes in the infants, thereby providing an avenue to increase protection from potentially harmful xenobiotics in adulthood.

Acknowledgements

The authors' contributions to the present study were as follows: A. C., B. H. and Y. B. designed the study. E. W. conducted the experiments and completed statistical analyses of the data. A. C., E. W. and Y. B. drafted the manuscript which B. H. and Z. E. J. reviewed. All authors read and approved the final version of the manuscript. A. C., E. W. and Y. B. have no conflicts of interest. B. H. and Z. E. J. were/are employed by Mead Johnson. This work was supported by Mead Johnson Nutrition (IN, USA).

References

- Huang XE, Hirose K, Wakai K, *et al.* (2004) Comparison of lifestyle risk factors by family history for gastric, breast, lung and colorectal cancer. *Asian Pac J Cancer Prev* **5**, 419–427.
- Hu FB (2003) Plant-based foods and prevention of cardiovascular disease: an overview. *Am J Clin Nutr* **78**, S544–S551.
- Hooper L, Kroon PA, Rimm EB, *et al.* (2008) Flavonoids, flavonoid-rich foods, and cardiovascular risk: a meta-analysis of randomized controlled trials. *Am J Clin Nutr* **88**, 38–50.
- Lotito SB & Frei B (2006) Consumption of flavonoid-rich foods and increased plasma antioxidant capacity in humans: cause, consequence, or epiphenomenon? *Free Radic Biol Med* **41**, 1727–1746.
- Kong AN, Owuor E, Yu R, *et al.* (2001) Induction of xenobiotic enzymes by the MAP kinase pathway and the anti-oxidant or electrophile response element (ARE/EpRE). *Drug Metab Rev* **33**, 255–271.
- Chen ZH, Hurh YJ, Na HK, *et al.* (2004) Resveratrol inhibits TCDD-induced expression of CYP1A1 and CYP1B1 and catechol estrogen-mediated oxidative DNA damage in cultured human mammary epithelial cells. *Carcinogenesis* **25**, 2005–2013.
- Jancova P, Anzenbacher P & Anzenbacherova E (2010) Phase II drug metabolizing enzymes. *Biomed Pap Med Fac Univ Palacky Olomouc Czech Repub* **154**, 103–116.
- Hanley B, Dijane J, Fewtrell M, *et al.* (2010) Metabolic imprinting, programming and epigenetics – a review of present priorities and future opportunities. *Br J Nutr* **104**, S1–S25.
- Daniel H, Drevon CA, Klein UI, *et al.* (2008) The challenges for molecular nutrition research 3: comparative nutrigenomics research as a basis for entering the systems level. *Genes Nutr* **3**, 101–106.
- Ronis MJ, Rowlands JC, Hakkak R, *et al.* (2001) Inducibility of hepatic CYP1A enzymes by 3-methylcholanthrene and isoflavone differs in male rats fed diets containing casein, soy protein isolate or whey from conception to adulthood. *J Nutr* **131**, 1180–1188.
- Ronis MJ, Chen Y, Jo CH, *et al.* (2004) Diets containing soy protein isolate increase hepatic CYP3A expression and inducibility in weanling male rats exposed during early development. *J Nutr* **134**, 3270–3276.
- Ronis MJ, Chen Y, Badaux J, *et al.* (2006) Soy protein isolate induces CYP3A1 and CYP3A2 in prepubertal rats. *Exp Biol Med (Maywood)* **231**, 60–69.
- Gidding SS, Dennison BA, Birch LL, *et al.* (2005) Dietary recommendations for children and adolescents: a guide for practitioners. *Circulation* **112**, 2061–2075.
- Price TS, Grosser T, Plomin R, *et al.* (2010) Fetal genotype for the xenobiotic metabolizing enzyme NQO1 influences intrauterine growth among infants whose mothers smoked during pregnancy. *Child Dev* **81**, 101–114.
- Scalbert A & Williamson G (2000) Dietary intake and bioavailability of polyphenols. *J Nutr* **130**, 8S Suppl., 2073S–2085S.
- Clarke JD, Dashwood RH & Ho E (2008) Multi-targeted prevention of cancer by sulforaphane. *Cancer Lett* **269**, 291–304.
- Chow HH & Hakim IA (2011) Pharmacokinetic and chemoprevention studies on tea in humans. *Pharmacol Res* **64**, 105–112.
- Moon YJ, Wang L, DiCenzo R, *et al.* (2008) Quercetin pharmacokinetics in humans. *Biopharm Drug Dispos* **29**, 205–217.
- Graefe EU, Wittig J, Mueller S, *et al.* (2001) Pharmacokinetics and bioavailability of quercetin glycosides in humans. *J Clin Pharmacol* **41**, 492–499.
- Tanigawa S, Fujii M & Hou D (2007) Action of Nrf2 and Keap1 in ARE-mediated NQO1 expression by quercetin. *Free Radic Biol Med* **42**, 1690–1703.
- Gaspar AV, Al-Janobi A, Smith JA, *et al.* (2005) Glutathione S-transferase M1 polymorphism and metabolism of sulforaphane from standard and high-glucosinolate broccoli. *Am J Clin Nutr* **82**, 1283–1291.
- Livak KJ & Schmittgen TD (2001) Analysis of relative gene expression data using real-time quantitative PCR and the 2(-Delta Delta C(T)) method. *Methods* **25**, 402–408.



23. Yu S & Kong AN (2007) Targeting carcinogen metabolism by dietary cancer preventive compounds. *Curr Cancer Drug Targets* **7**, 416–424.
24. Rolfe KJ, Cambrey AD, Richardson J, *et al.* (2007) Dermal fibroblasts derived from fetal and postnatal humans exhibit distinct responses to insulin like growth factors. *BMC Dev Biol* **7**, 124.
25. MacLean HE, Gonzales M, Greenland KJ, *et al.* (2005) Age-dependent differences in androgen binding affinity in a family with spinal and bulbar muscular atrophy. *Neurol Res* **27**, 548–551.
26. Valerio LG, Kepa JK Jr & Pickwell GV (2001) Induction of human NAD(P)H:quinone oxidoreductase (NQO1) gene expression by the flavonol quercetin. *Toxicol Lett* **119**, 49–57.
27. Muzolf-Panek M, Gliszczyńska-Swigłó A, de Haan L, *et al.* (2008) Role of catechin quinones in the induction of EpRE-mediated gene expression. *Chem Res Toxicol* **21**, 2352–2360.
28. Zhang Y, Munday R, Jobson HE, *et al.* (2006) Induction of GST and NQO1 in cultured bladder cells and in the urinary bladders of rats by an extract of broccoli (*Brassica oleracea italica*) sprouts. *J Agric Food Chem* **54**, 9370–9376.
29. Svehlíková V, Wang S, Jakubíková J, *et al.* (2004) Interactions between sulforaphane and apigenin in the induction of UGT1A1 and GSTA1 in CaCo-2 cells. *Carcinogenesis* **25**, 1629–1637.
30. Brooks JD, Paton VG & Vidanes G (2001) Potent induction of phase 2 enzymes in human prostate cells by sulforaphane. *Cancer Epidemiol Biomarkers Prev* **10**, 949–954.
31. Zhu H, Jia Z, Strobl JS, *et al.* (2008) Potent induction of total cellular and mitochondrial antioxidants and phase 2 enzymes by cruciferous sulforaphane in rat aortic smooth muscle cells: cytoprotection against oxidative and electrophilic stress. *Cardiovasc Toxicol* **8**, 115–125.
32. Marrot L, Jones C, Perez P, *et al.* (2008) The significance of Nrf2 pathway in (photo)-oxidative stress response in melanocytes and keratinocytes of the human epidermis. *Pigment Cell Melanoma Res* **21**, 79–88.
33. Dinkova-Kostova AT, Fahey JW, Wade KL, *et al.* (2007) Induction of the phase 2 response in mouse and human skin by sulforaphane-containing broccoli sprout extracts. *Cancer Epidemiol Biomarkers Prev* **16**, 847–851.
34. Lee JS & Surh YJ (2005) Nrf2 as a novel molecular target for chemoprevention. *Cancer Lett* **224**, 171–184.
35. Jakubíková J, Sedlák J, Bod'ó J, *et al.* (2006) Effect of isothiocyanates on nuclear accumulation of NF-kappaB, Nrf2, and thioredoxin in Caco-2 cells. *J Agric Food Chem* **54**, 1656–1662.
36. Keum YS (2011) Regulation of the Keap1/Nrf2 system by chemopreventive sulforaphane: implications of posttranslational modifications. *Ann N Y Acad Sci* **1229**, 184–198.