

Research Article

Direct Laser-Driven Electron Acceleration and Energy Gain in Helical Beams

Etele Molnár  and Dan Stutman 

Extreme Light Infrastructure–Nuclear Physics ELI-NP, Horia Hulubei National Institute for Physics and Nuclear Engineering, 30 Reactorului Street, RO-077125, Bucharest-Magurele, Romania

Correspondence should be addressed to Etele Molnár; etele.molnar@eli-np.ro

Received 15 December 2020; Revised 26 April 2021; Accepted 20 May 2021; Published 1 June 2021

Academic Editor: Dimitri Batani

Copyright © 2021 Etele Molnár and Dan Stutman. This is an open access article distributed under the Creative Commons Attribution License, which permits unrestricted use, distribution, and reproduction in any medium, provided the original work is properly cited.

A detailed study of direct laser-driven electron acceleration in paraxial Laguerre–Gaussian modes corresponding to helical beams LG_{0m} with azimuthal modes $m = \{1, 2, 3, 4, 5\}$ is presented. Due to the difference between the ponderomotive force of the fundamental Gaussian beam LG_{00} and helical beams LG_{0m} , we found that the optimal beam waist leading to the most energetic electrons at full width at half maximum is more than twice smaller for the latter and corresponds to a few wavelengths $\Delta w_0 = \{6, 11, 19\}\lambda_0$ for laser powers of $P_0 = \{0.1, 1, 10\}$ PW. We also found that, for azimuthal modes $m \geq 3$, the optimal waist should be smaller than $\Delta w_0 < 19\lambda_0$. Using these optimal values, we have observed that the average kinetic energy gain of electrons is about an order of magnitude larger in helical beams compared to the fundamental Gaussian beam. This average energy gain increases with the azimuthal index m leading to collimated electrons of a few 100 MeV energy in the direction of the laser propagation.

1. Introduction

The well-known Laguerre–Gaussian (LG_{pm}) modes of paraxial light with integer radial and azimuthal, p and m , indices have a phase distribution of $e^{-im\theta}$, where θ is the azimuthal angle. Here, m corresponds to the azimuthal or rotational order of the mode with a well-defined orbital angular momentum (OAM) of $m\hbar$ per photon [1]. Such higher-order modes lead to twisted light by forming an optical vortex in the direction of propagation associated with the optical phase singularity. The spiral shape of the wavefront is formed by $|m|$ interconnected helices; hence, $LG_{p,m \neq 0}$ beams are called helical beams.

These distinctive properties of higher-order Laguerre–Gaussian modes set forth to an ever-increasing amount of applications in different areas of optical communications, imaging techniques, quantum information technologies, and other topics; see [2–6] and references therein.

In recent years with the development of ultraintense multi-PW laser technology, Laguerre–Gaussian laser modes have other potential applications in the fields of plasma

accelerators and inertial confinement fusion and in the generation of X-rays and γ -rays with OAM [7–14]. In particular, it has been shown that, in laser wakefields driven by LG_{01} helical pulses, the wakefield shows a donut-like structure with a ring-shaped hollow electron beam [14]. Furthermore, for a lower-density plasma or a smaller laser spot size, besides the donut-like wakefield, a central bell-like wakefield forms in the center of the donut-like wake. On the contrary, further reducing the plasma density or laser spot size leads to an on-axis electron beam acceleration only.

It was also demonstrated that Laguerre–Gaussian beams transfer a part of their OAM to electrons through the dephasing process similar to the direct electron acceleration (DLA) in Gaussian beams [15]. Furthermore, the propagation of optical beams with OAM leads to plasma waves that may also carry OAM which couple to the plasma electrons and involve Landau damping and particle acceleration accompanied with the generation of quasi-static axial and azimuthal magnetic fields [16]. When Laguerre–Gaussian plasma waves are subjected to Landau damping, a higher azimuthal mode number leads to a larger OAM

transfer to particles traveling close to the phase velocity of the plasma wave [17]. Vacuum-based charge acceleration with Laguerre–Gaussian beams has also been studied very recently [18, 19] showing that it is possible to generate GeV high-quality electron bunch with low spread in energy and radial deflection.

Motivated by these interesting results, in this paper, we will study direct electron acceleration in vacuum in various helical Laguerre–Gaussian LG_{0m} laser pulses corresponding to helical modes $m = \{0, 1, 2, 3, 4, 5\}$. Laser beams with $p = 0$ and $m = 0$ define the fundamental Gaussian mode, while beams with $p = 0$ and $m \geq 1$ have a hollow ring-like transverse intensity profile with zero intensity at the center. The central hollowness corresponds to a potential well which confines/accelerates the electric charges through the transverse/longitudinal ponderomotive forces.

This type of ponderomotive trap is also realized using higher-order transverse electromagnetic modes (TEMs), i.e., the Hermite–Gaussian modes, such as $TEM_{1,0}$ or the combination of $TEM_{1,0}$ with $TEM_{0,1}$. This ponderomotive potential is similarly axisymmetric and has a minimum on the axis [20–24]. This is certainly expected since orthogonal Hermite–Gaussian modes may be decomposed into Hermite–Gaussian modes with a phase difference, and vice versa; see [1, 25] for the general formulas.

Here, we specifically focus our study on the energy gain in femtosecond lasers of low to very high intensity, thereby gaining valuable estimates about relevant parameters for lasers operating at ELI-NP [26]. Our results are based on the 3-dimensional numerical solution of the relativistic equations of motion for free electrons in paraxial laser fields. Henceforth, similarly as in very low-density plasmas, in DLA, we also observe collimated and intertwining electron beams in the direction of the laser propagation, while in addition, we also show that the average energy gain increases with the azimuthal mode index m .

Furthermore, we found that the optimal beam waist leading to the most energetic electrons is more than twice smaller in case of higher-order Laguerre–Gaussian beams than in case of the fundamental Gaussian beam that was presented in [27]. For lasers of $P_0 = \{0.1, 1, 10\}$ PW power, the optimal beam waists are $\Delta w_0 = \{6, 11, 19\}\lambda_0$ and correspond to $I_0 = I^{0m} \times \{0.76, 2.2, 7.6\}10^{21}$ W/cm² peak intensities, while taking into account the intensity profiles of the LG_{0m} beams, these values are reduced by $I^{0m} \approx \{0.37, 0.27, 0.23, 0.19, 0.17\}$ for $m = \{1, 2, 3, 4, 5\}$. Using these optimal values, we have observed that, for the same laser power, the average kinetic energy gain of electrons is about an order of magnitude larger in helical beams compared to the fundamental Gaussian beam.

This paper is organized as follows. In Section 2, we present some of the characteristic properties of helical beams, the equations of motion for electrons, and the initial conditions corresponding to our study. In Section 3.1, we have estimated the optimal values of beam waist leading to the most energetic electrons for given laser power. Applying these optimal values, we present and discuss the electron dynamics and energy gains in linearly polarized (LP) and circularly polarized (CP) helical beams in Section 3.2. The conclusions are summarized in Section 4.

2. Direct Laser-Driven Electron Acceleration in Helical Beams

2.1. Laguerre–Gaussian Beams. A well-known solution [28, 29] to the paraxial wave equation is obtained in cylindrical coordinates (r, θ, z) , with the help of generalized Laguerre polynomials. This solution is cylindrically symmetric around the axis of propagation z , with radius $r = \sqrt{x^2 + y^2}$ and azimuth $\theta = \arctan(x/y)$, expressed in Cartesian coordinates. These are the Laguerre–Gaussian (LG_{pm}) beams [1, 10, 12], with radial index p and azimuthal index m . The general expression for the electric field distribution of a monochromatic LG_{pm} pulse is

$$\begin{aligned}
 E_{T,pm}(r, \theta, z) &= C_{pm}E_0 \exp[-ik_0z + i\phi_0] \\
 &\times \frac{w_0}{w(z)} \exp\left[-\frac{r^2}{w^2(z)} - i\frac{zr^2}{Z_R w^2(z)} + i\arctan\left(\frac{z}{Z_R}\right)\right] \\
 &\times \left(\frac{\sqrt{2}r}{w(z)}\right)^{|m|} \exp\left[i(2p + |m|)\arctan\left(\frac{z}{Z_R}\right)\right] \\
 &\times L_p^{|m|}\left(\frac{2r^2}{w^2(z)}\right) \exp[-im\theta],
 \end{aligned} \tag{1}$$

where $k_0 = \omega_0/c$ is the wavenumber, $c = 1/\sqrt{\epsilon_0\mu_0}$ is the speed of light in vacuum, ω_0 is the angular frequency, E_0 is the amplitude of the electric field, and ϕ_0 is the initial phase.

Furthermore, $Z_R = w_0^2 k_0/2$ is the Rayleigh range, $R_c(z) = (z^2 + Z_R^2)/z$ is the radius of curvature, and $\phi_G(z) = \arctan(z/Z_R)$ is the Gouy phase. The beam waist is defined as

$$w(z) = w_0 \sqrt{1 + \left(\frac{z}{Z_R}\right)^2}, \tag{2}$$

where the beam waist radius at focus is $w_0 \equiv w(z = 0)$.

The Laguerre polynomials are denoted by L_p^m , and the normalization constant, $C_{pm} = \sqrt{p!/(p + |m|)!}$, follows from the orthonormality of the Laguerre polynomials [30]. The fundamental Gaussian beam LG₀₀ is obtained for $p = m \equiv 0$, where $C_{00} = L_0^0 \equiv 1$.

The components of the electric and magnetic fields are

$$\begin{aligned} E_{x,pm} &= \alpha_x E_{T,pm}, \\ E_{y,pm} &= -i\alpha_y E_{T,pm}, \\ B_{x,pm} &= \frac{1}{c} E_{y,pm}, \\ B_{y,pm} &= +\frac{1}{c} E_{x,pm}, \end{aligned} \tag{3}$$

where $\alpha_x = \sqrt{(1 + \alpha_p)/2}$ and $\alpha_y = \sqrt{(1 - \alpha_p)/2}$ such that $\alpha_p = 1$ or -1 in case of linear polarization along the x -axis or y -axis, respectively, and $\alpha_p = 0$ for circular polarization, while elliptic polarization, otherwise.

The longitudinal components of the electric and magnetic fields are calculated from Maxwell's equations, $\nabla \cdot \vec{E} = \nabla \cdot \vec{B} \equiv 0$; thus, in the paraxial approximation,

$$\begin{aligned} E_{z,pm} &= -\frac{i}{k_0} \left(\frac{\partial E_{x,pm}}{\partial x} + \frac{\partial E_{y,pm}}{\partial y} \right) \\ &= \frac{i}{k_0 w^2(z)} [xE_{x,pm} + yE_{y,pm}] \\ &\quad \times \left[2 \left(1 + i \frac{z}{Z_R} \right) - |m| \frac{w^2(z)}{r^2} + \frac{4L_{p-1}^{|m|+1}(2r^2/w^2(z))}{L_p^{|m|}(2r^2/w^2(z))} \right] \\ &\quad - \frac{m}{k_0 r^2} [yE_{x,pm} - xE_{y,pm}], \\ B_{z,pm} &= \frac{i}{ck_0} \left(\frac{\partial E_{x,pm}}{\partial y} - \frac{\partial E_{y,pm}}{\partial x} \right) \\ &= \frac{i}{ck_0 w^2(z)} [yE_{x,pm} - xE_{y,pm}] \\ &\quad \times \left[2 \left(1 + i \frac{z}{Z_R} \right) - |m| \frac{w^2(z)}{r^2} + \frac{4L_{p-1}^{|m|+1}(2r^2/w^2(z))}{L_p^{|m|}(2r^2/w^2(z))} \right] \\ &\quad + \frac{m}{ck_0 r^2} [xE_{x,pm} + yE_{y,pm}]. \end{aligned} \tag{4}$$

Therefore, the electromagnetic field of Laguerre–Gaussian pulses is given by

$$\vec{E}_{pm}(t, r, \theta, z) = \text{Re} \left[\vec{E}_{pm}(r, \theta, z) g(t, z) \right], \tag{5}$$

$$\vec{B}_{pm}(t, r, \theta, z) = \text{Re} \left[\vec{B}_{pm}(r, \theta, z) g(t, z) \right], \tag{6}$$

where the Gaussian temporal envelope with τ_0 duration and peak intensity position at z_F reads [31]

$$g(t, z) = \exp \left[i\omega_0 t - \left(\frac{t - (z - z_F)/c}{\tau_0} \right)^2 \right]. \tag{7}$$

Note that there are more appropriate choices for the temporal profile such as the hyperbolic secant $g(t, z) \sim 1/\cosh((t - (z - z_F)/c)/\tau_0)$; see [32–34] for more details. Using this profile, we found that the energy gain may be reduced by as much as 30% compared to Gaussian.

2.2. Helical Beams. The Laguerre–Gaussian beams, LG_{0m}, with nonzero azimuthal modes $|m| \neq 0$ contain a phase change given by $e^{-im\theta}$. Note, however, that, for all modes, the generalized Laguerre polynomials have a contribution equal to one, i.e., $L_0^m(x) = L_0(x) = 1$. These type of Laguerre–Gaussian beams, LG_{0m}, are the helical beams associated with the nonzero OAM of light [1, 35].

In Figure 1, the normalized intensity profiles of linearly polarized fundamental Gaussian and different helical beams are shown as a function of radial distance, in units of beam waist radius w_0 . These plots represent $I^{0m} = |E_x^{0m}/E_0|^2$ using equation (1), for $t = z \equiv 0$ and $k_0 = \omega_0 = w_0 \equiv 1$, while the intensity is $I_0^{0m} \sim E_0^2 I^{0m}$.

The intensity of LG_{0m}-modes is largest for $m = 0$ corresponding to the fundamental Gaussian beam, and it is decreasing with an increasing number of azimuthal modes. Due to the $(\sqrt{2} r/w(z))^{|m|}$ factor, all modes with $|m| \geq 1$ have zero intensity at the center, $r = 0$, that is known as an optical vortex or phase singularity on the axis.

The intensity profiles of Gaussian beams are concave functions on the whole interval. The intensity of helical beams is independent of θ and has a convex part with maxima at $r_m = w_0 \sqrt{|m|/2}$ after which the functions change from convex to concave. The width of the convex part widens with increasing azimuthal index m , while using the positions of maxima, the intensity peaks of LG_{0m}-modes relative to fundamental Gaussian lead, $I^{0m}(r_m) = C_{0m} |m|^{|m|} e^{-|m|}$, as shown in Figure 1.

2.3. Electron Acceleration in the Electromagnetic Field. The motion of electrically charged particles in an external electromagnetic field is governed by the Lorentz force, $\vec{F}_L \equiv d\vec{p}/dt = q(\vec{E} + \vec{v} \times \vec{B})$, and leads to the following set of nonlinear differential equations [36]:

$$\frac{d\vec{x}}{dt} = c\vec{\beta}, \tag{8}$$

$$\frac{d\vec{\beta}}{dt} = \frac{-e}{\gamma m_e c} [-\vec{\beta}(\vec{\beta} \cdot \vec{E}) + \vec{E} + c\vec{\beta} \times \vec{B}]. \tag{9}$$

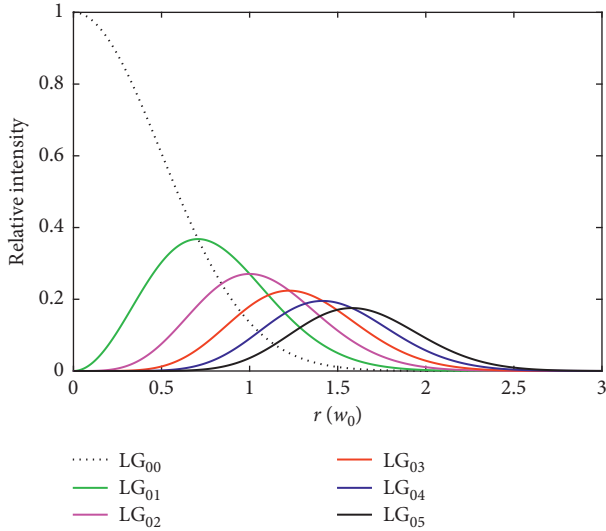


FIGURE 1: The relative intensity profiles at constant power and beam waist as a function of the radius of an LP laser: the fundamental Gaussian beam LG_{00} with dotted black line and the helical beams LG_{01} , LG_{02} , LG_{03} , LG_{04} , and LG_{05} with green, magenta, red, blue, and black lines correspondingly.

Here, $q = -e$ is the electron's charge, the Cartesian coordinates and normalized velocity are denoted by \vec{x} and $\vec{\beta} \equiv \vec{v}/c$, while the Lorentz factor is $\gamma = 1/\sqrt{1 - |\vec{\beta}|^2}$.

The four-momentum of the electron is $p^\mu \equiv (p^0, \vec{p}) = m_e \gamma c (1, \vec{\beta})$, where $m_e \equiv \sqrt{p^\mu p_\mu}/c^2 = 0.511 \text{ MeV}/c^2$ is its invariant rest mass. The relativistic energy \mathcal{E} and momentum \vec{p} of electrons are expressed as

$$\begin{aligned} p^0 &\equiv \frac{\mathcal{E}}{c} = \gamma m_e c, \\ \vec{p} &= \gamma m_e \vec{v}. \end{aligned} \quad (10)$$

Laser-driven electron acceleration in vacuum is the consequence of the direct interaction of the laser pulse with electrons [37–46]. At any given time, equations (8) and (9) are input for the electromagnetic field of the laser pulse, i.e., equations (5) and (6); hence, the trajectory of the propagating electric charge dynamically maps the laser pulse.

The 3-dimensional solutions to the electron trajectories and velocities are obtained by solving these coupled differential equations numerically by an adaptive time-step Runge–Kutta method with an accuracy and numerical precision up to 12 digits.

2.4. Initial Conditions. Unless stated otherwise, initially, all electrons are at rest, i.e., $\vec{\beta}_i(t_0) = \vec{\beta}_{0,i} \equiv \vec{0}$ and $\gamma_{0,i} = 1$. These electrons at $z_{0,i} = 0$ coordinates are uniformly distributed in the orthogonal plane, $(x_{0,i}, y_{0,i})$, on a disk with a radius that is three times the beam waist radius, i.e., $r_0 = 3w_0$. Thus, initially, over 99% of the laser's energy is contained within this disk. The initial position of the peak of the laser pulse is located on the longitudinal axis at $z_F = -5\tau_0 c$ behind the electrons, i.e., full pulse interaction, while

all electrons are independent from each other and only interact with the laser pulse [27].

For current purposes, we have fixed the laser wavelength to $\lambda_0 = 800 \text{ nm}$. The laser pulse duration at full width at half maximum (FWHM), $\Delta\tau_0 = 25 \text{ fs}$, corresponds to $\tau_0 = \Delta\tau_0/2\sqrt{\ln 2}$. Similarly, the beam waist at FWHM Δw_0 leads to $w_0 = \Delta w_0/2\sqrt{\ln 2}$ waist radius.

The peak intensity and peak power for a monochromatic LP Gaussian laser are $I_0 \equiv a_0^2 (m_e c \omega_0 / e)^2 (c \epsilon_0 / 2)$ and $P_0 \equiv I_0 (\pi w_0^2 / 2)$, where the normalized electric field amplitude is $a_0 = (e E_0 / m_e c \omega_0)$. For $P_0 = \{0.1, 1, 10\}$ PW power and beam waists of $\Delta w_0 = \{6, 11, 19\} \lambda_0$, these values are listed in Table 1. For helical beams, the field intensities at the local maxima are $a_0^{0m}(r_m) = a_0 \sqrt{C_{0m} |m|^{2|m|} e^{-|m|}}$ since the total power of the beam is constant, $P_0 \equiv (E_0^2 / m!) \int_0^\infty 2\pi r (\sqrt{2} r / w_0)^{2|m|} \exp(-2r^2/w_0^2) dr = E_0^2 w_0^2 \pi / 2$.

3. Results

3.1. Optimal Beam Waist. First of all, we are interested in the values of the beam waist for different laser powers that lead to maximal energy gains, in case of the Gaussian beam LG_{00} and the helical beams LG_{01} , LG_{02} , LG_{03} , LG_{04} , and LG_{05} .

The energy gain of electrons interacting with an LG_{0m} laser pulse is a function of the initial location of electrons, the laser spot size, and azimuthal mode m . To estimate the value of the beam waist that correspondingly leads to maximum energy gains for a given laser power, we have varied the initial position of electrons uniformly $x_{0,i} = y_{0,i} \equiv \{0.05, 0.1, 0.15, \dots, 2.5\} w_0$ at $z_{0,i} = 0$ and calculated the respective energy gain of a single electron for each position:

$$\Delta \mathcal{E}_i(t) \equiv \mathcal{E}_i(t) - \mathcal{E}_i(t_0) = (\gamma_i - 1) m_e c^2, \quad (11)$$

where $\mathcal{E}_i(t_0) = m_e c^2$. Furthermore, for all discrete values of beam waist $\Delta w_0 = \{1, 2, \dots, 200\} \lambda_0$, we have also calculated the average of these energy gains, $\Delta \mathcal{E} = \sum_i^N \Delta \mathcal{E}_i / N$, where $N = 50$ corresponds to the number of the initial positions of electrons in the transverse plane.

These weighted averages for different laser powers are shown in Figure 2 for both LP and CP pulses. Here, the average energy gains corresponding to laser powers of $P_0 = \{0.1, 1, 10\}$ PW are plotted with red, blue, and black, as a function of initial spot size. The full and dashed lines correspond to CP and LP lasers, respectively.

First, we discuss these results qualitatively. For a given laser power, the amplitude of the electron oscillations along the polarization direction increases with intensity. Increasing the beam waist decreases the intensity, and the scattering of electrons decreases; hence, they remain confined in the pulse being able to gain more energy from the laser, until the oscillations become larger than the waist and the electron scatters out from the pulse.

On the contrary, increasing the waist of the beam also decreases the longitudinal components of the electric field and the Lorentz force, i.e., E_z and $(\vec{v} \times \vec{B})_z$, and therefore reduces the net kinetic energy gain of electrons. The electrons are accelerated to larger and larger velocities in the

TABLE 1: The normalized field amplitudes corresponding to LP Gaussian pulses for different waist radii and laser powers.

P_0 (PW)	$w_0 = 3.6\lambda_0$	$w_0 = 6.6\lambda_0$	$w_0 = 11.4\lambda_0$
0.1	$a_0 = 18.9$	$a_0 = 10.3$	$a_0 = 5.9$
1	$a_0 = 59.8$	$a_0 = 32.6$	$a_0 = 18.9$
10	$a_0 = 189.3$	$a_0 = 103.2$	$a_0 = 59.7$

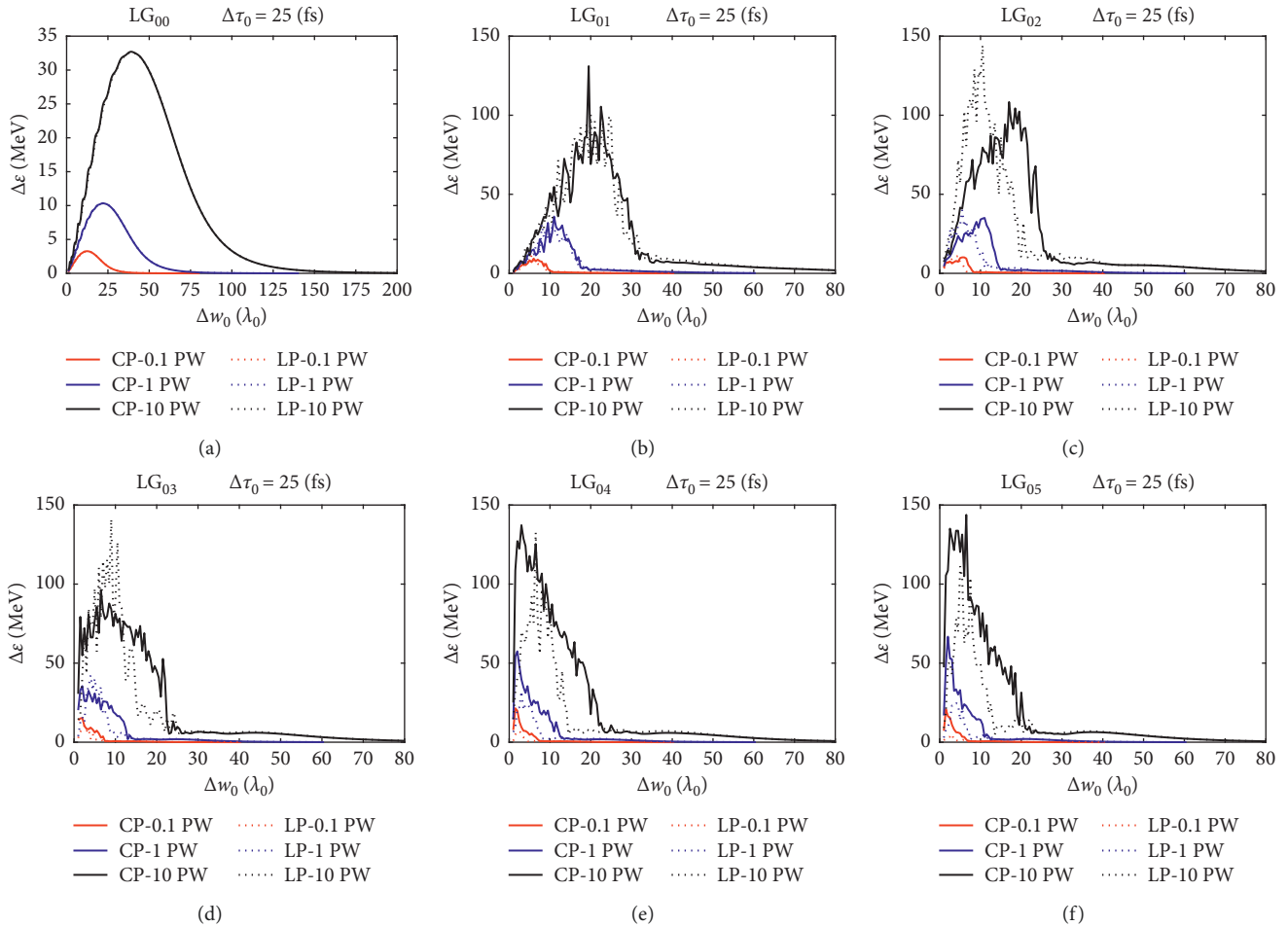


FIGURE 2: The average energy gain of an electron initially located at $z_0 = 0$ and $x_0 = y_0 \equiv \{0.05, 0.1, \dots, 2.5\}\Delta w_0$ as a function of the beam waist. The red, blue, and black lines correspond to the weighted average energy of $P_0 = \{0.1, 1, 10\}$ PW laser powers, respectively. The full and dotted lines correspond to CP and LP lasers. (a–c) The Gaussian beam, LG_{00} , and the helical beams LG_{01} and LG_{02} . (d–f) The helical beams LG_{03} , LG_{04} , and LG_{05} .

front part of the pulse, and thus, the electron trajectories are elongated in the direction of the laser propagation, while the deceleration in the back part of the pulse becomes less efficient.

This means that the beam waist corresponding to the highest average energy gain, i.e., the highest peaks of the averages in Figure 2, represents the optimal waist for the given laser power and polarization. For larger power lasers, a wider initial beam waist is more optimal to ensure that the electrons remain confined inside the pulse to gain more energy.

Therefore, using Figure 2, we can approximate the beam waists corresponding to the peaks in net energy gain. In case

of the fundamental Gaussian beam, the optimal beam waist at FWHM corresponds to few tens of wavelengths, $\Delta w_0 = \{13, 23, 41\}\lambda_0$, for laser powers of $P_0 = \{0.1, 1, 10\}$ PW, such that the net energy gain increases about $\Delta \mathcal{E} \approx \sqrt{10}$ for every order of magnitude increase in laser power. Even with those optimal values, the average energy gain of only a few MeV was observed in LG_{00} beams; see [27] for more details. Note also that, in case of the Gaussian pulse, the outcome is independent on the polarization, and the averaged results overlap. This behavior is similar for the LG_{01} helical beam, but for higher modes, the distinction between CP and LP pulses becomes more apparent.

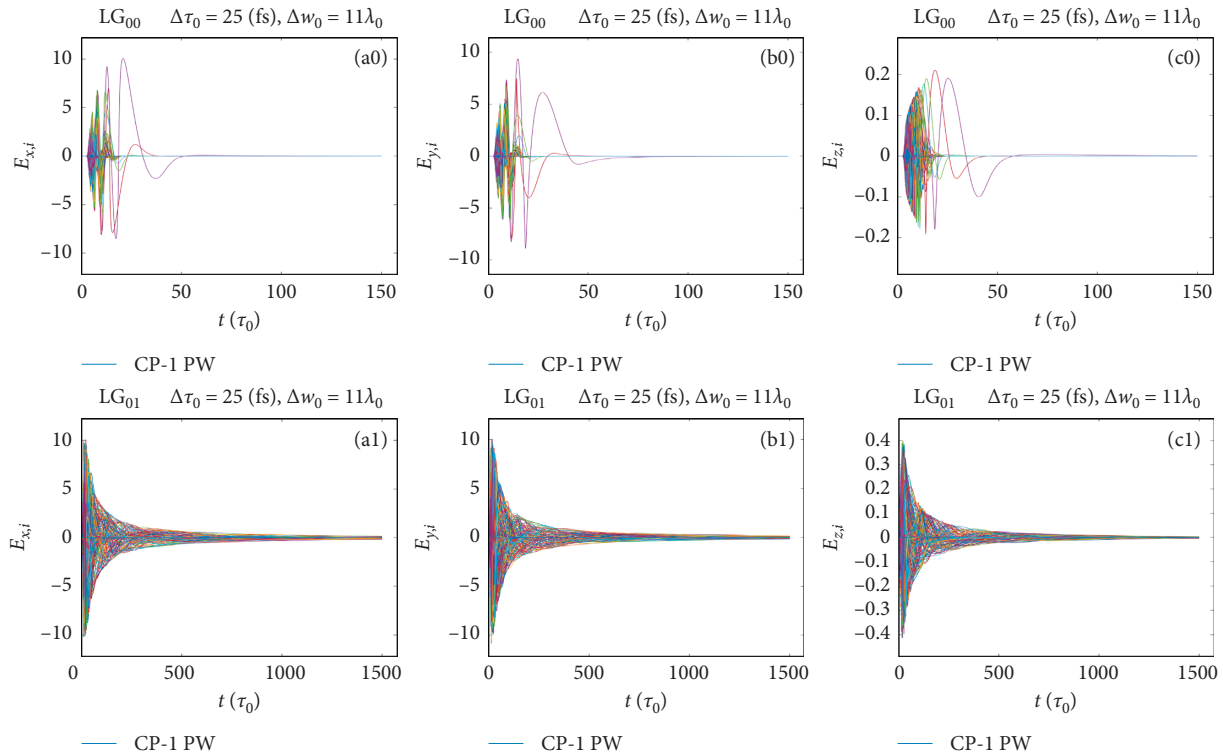


FIGURE 3: CP lasers of $P_0 = 1$ PW power, with $\Delta\tau_0 = 25$ fs and $\Delta w_0 = 11\lambda_0$. (a0, b0, c0) The electric fields seen by the electrons $E_{x,i}$, $E_{y,i}$, and $E_{z,i}$ in units of a_0 as a function of time, corresponding to the LG₀₀ beam. (a1, b1, c1) They are for the helical beam LG₀₁.

Now, averaging the energy gains $\Delta\mathcal{E}$ of the helical beams LG₀₁ and LG₀₂ for a circularly polarized laser from Figure 2, we have approximated the optimal beam waists at FWHM. These optimal beam waists are $\Delta w_0 = \{6, 11, 19\}\lambda_0$ corresponding to increasing laser power of $P_0 = \{0.1, 1, 10\}$ PW. These approximated values represent the chosen optimal values for direct electron acceleration in all helical beams of interest, LG₀₁, ..., LG₀₅. Note, however, that the optimal beam waist also reduces slightly as the mode number increases (see Figure 2). Therefore, the previously chosen beam waists are suboptimal for LG₀₄ and LG₀₅ modes where even a smaller beam waist would be more favorable for larger energy gains.

The most important observation in case of CP beams is that the optimal spot sizes of helical beams are more than twice smaller than for the fundamental Gaussian beam. In case of LP beams, this difference further increases with the mode index $|m| \geq 1$. Furthermore, for these relatively tight initial waists, of a few wavelengths, the helical beams might lead to almost an order of magnitude larger net energy gains compared to the fundamental Gaussian beam at high laser power.

A straightforward explanation can be formulated in terms of the ponderomotive force, $F_p^{0m} = -\nabla\Phi^{0m}$, where the ponderomotive potential, the cycle-averaged oscillation energy, is directly proportional to the intensity, $\Phi^{0m} = e^2 |\vec{E}_{0m}|^2 / (4m_e \omega_0^2) \sim I_0^{0m}$, shown in Figure 1. The ponderomotive force causes the charges oscillating in an inhomogeneous electric field to drift from where the electric field is larger to where it is smaller. Therefore, the immediate

consequence of the transverse ponderomotive force is the scattering of charges from “regions” of higher to lower electric field intensity. Due to the fact that the intensity of the helical beams has a wide convex region, the charges found in this region are naturally driven to the beam center with zero intensity.

In other words, the transverse ponderomotive force in Gaussian beams is always positive; hence, the electrons are scattered outwards from the pulse. In helical beams, the transverse ponderomotive force of the convex region is negative, and hence, the electrons are effectively trapped inside the “hollow” pulse (see Figure 1). This leads to less spread, better focusing, and collimated electron trajectories confined near the axis of propagation. These captured electrons are accelerated further by the longitudinal ponderomotive force while continue to gain more energy through the phase synchronization process leading to larger energy gains; see [19] for more details.

3.2. Energy Gain for Optimal Beam Waists. Using the previously given initial conditions together with the optimal values listed in Table 1 for both CP and LP lasers of $P_0 = \{0.1, 1, 10\}$ PW power and initial beam waist of $\Delta w_0 = \{6, 11, 19\}\lambda_0$, we have numerically calculated the direct laser-driven electron acceleration corresponding to the fundamental Gaussian LG₀₀ and LG_{0m} helical beams with azimuthal modes $m = \{1, 2, 3, 4, 5\}$.

In Figure 3, we have plotted all Cartesian components of the electric field as a function of time in units of the

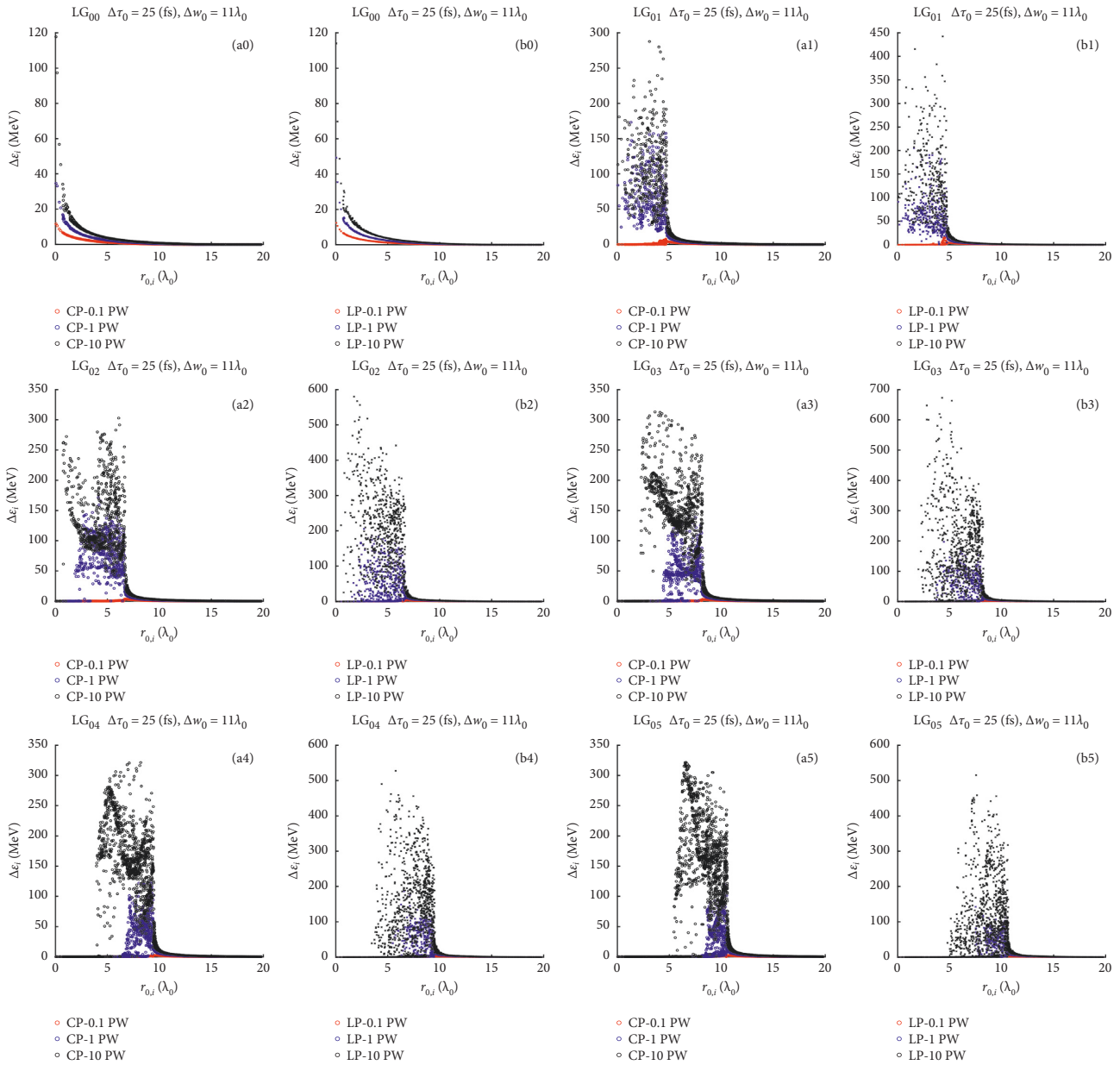


FIGURE 4: The energy gained from laser pulses with $\Delta\tau_0 = 25$ fs and $\Delta w_0 = 11\lambda_0$ of $P_0 = \{0.1, 1, 10\}$ PW power with red, blue, and black correspondingly as a function of the same initial radial position of electrons. (a0, b0) The energy gained from a Gaussian laser pulse corresponding to CP and LP pulses, which are plotted with “o” and “x,” respectively. (a1, b1) The energy gained as a function of the initial radial position in LG_{01} helical CP and LP beams, (a2, b2) LG_{02} and (a3, b3) LG_{03} helical CP and LP beams, and (a4, b4) LG_{04} and (a5, b5) LG_{05} helical CP and LP beams.

normalized field intensity a_0 as mapped by $N_e = 6000$ accelerated electrons with lower index i . In LG_{00} beams, the electrons are accelerated at the front part of the pulse, but without reaching the available peak intensity of the pulse, the electrons are scattered out by the transverse ponderomotive force. In helical beams, e.g., LG_{01} and LG_{05} , the available “peak” intensities are about 2.5 and 5.5 times smaller than in LG_{00} . However, these intensity maxima are located further away from the midpoint, i.e., $r = 0$, the location of maximum intensity of the Gaussian beam and zero intensity for the helical beams (see Figure 1). Therefore, the electrons found in the convex part of the pulse are captured and accelerated

for a much longer time, being clearly visible in Figure 3, where the time axes of the electric field components are an order of magnitude longer for the helical beams. This also means that the trajectories of some electrons captured by helical beams are up to an order of magnitude longer in the direction of the laser propagation. Furthermore, as apparent in Figure 3, the electrons also have a twisted circular motion with intertwining trajectories, similar as presented in [9].

To further elucidate these issues, in Figure 4, we have plotted the net energy gain of electrons as a function of the initial radial distance, $r_{0,i} = \sqrt{x_{0,i}^2 + y_{0,i}^2}$, at the origin $z_{i,0} = 0$, for varying laser power. Here, all figures correspond to an

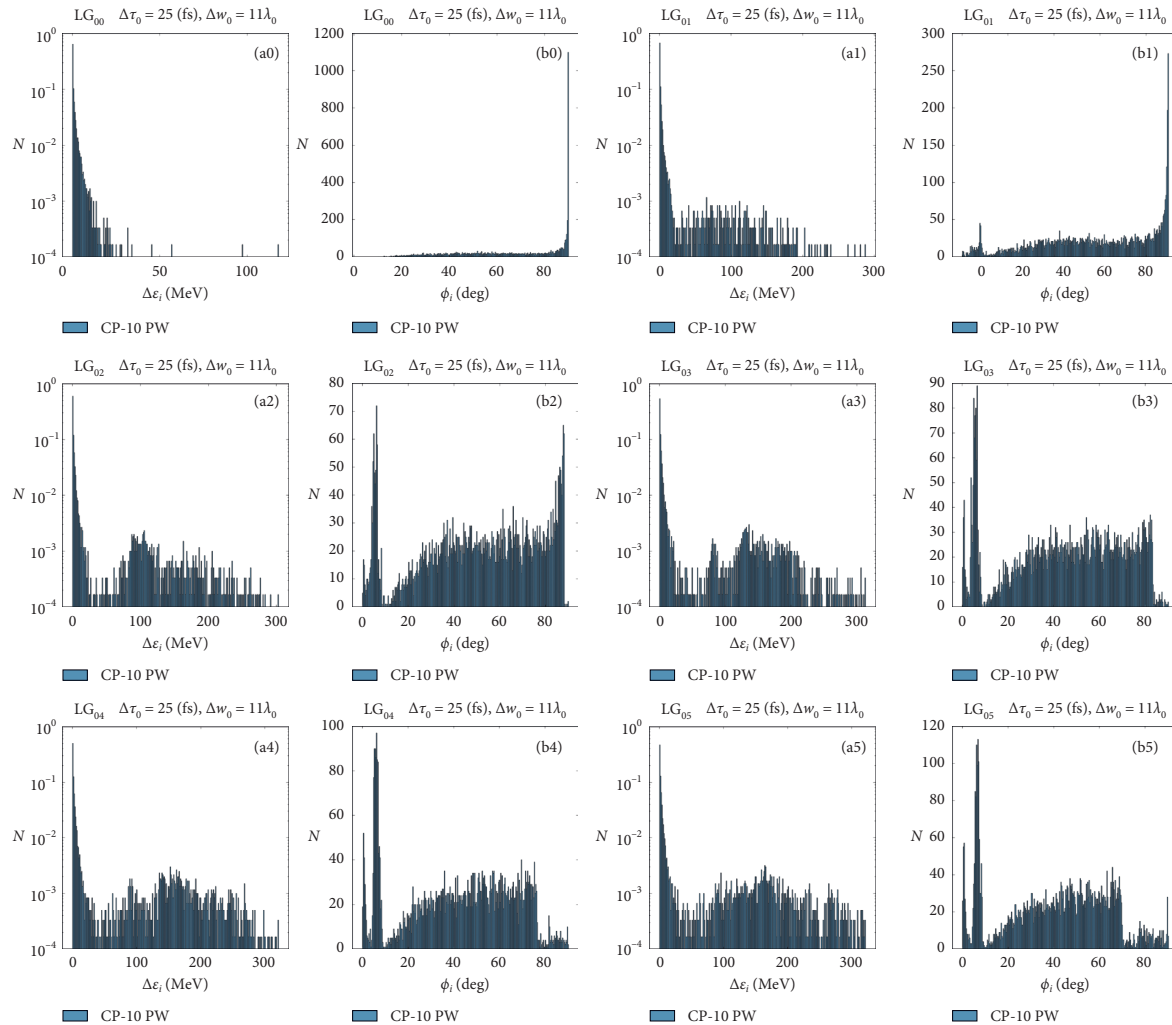


FIGURE 5: The logarithmic scale histogram of net energy gained $\Delta\mathcal{E}_i$ and the polar angle histogram ϕ_i of electrons after interaction with a circularly polarized laser pulse with $\Delta\tau_0 = 25$ fs, $\Delta w_0 = 11\lambda_0$ beam waist, and $P_0 = 10$ PW power. (a0, b0) The energy gained from a Gaussian pulse and the corresponding angular distribution of electrons. (a1, b1) The energy gain and angular distribution in case of the LG_{01} helical beam, for helical beams LG_{02} (a2, b2) and LG_{03} (a3, b3), and for helical beams LG_{04} (a4, b4) and LG_{05} (a5, b5).

initial beam waist of $\Delta w_0 = 11\lambda_0$, while CP and LP pulses are plotted with “o” and “x,” respectively. Similar to the previously presented figures, red, blue, and black correspond to $P_0 = \{0.1, 1, 10\}$ PW laser power. Figures 4(a0) and 4(b0) correspond to Gaussian beams, while Figures 4(a1) and 4(b1) are for helical beams LG_{01} . Similarly, the helical beams, LG_{02} , LG_{03} and LG_{04} , LG_{05} , with different polarizations are shown.

Here, we observe that the net energy gain as a function of the initial radial distance also reflects the initial intensity profiles shown in Figure 1. The intensity of the Gaussian beam falls off exponentially as a function of the radius; hence, the electric charges found further away from the center gain less and less energy. In the case of the helical beams, the largest acceleration occurs within the convex part of the intensity curves. Furthermore, as the distance between the center and the intensity peak widens with the azimuthal index, the peaks in intensity of the LG_{0m} helical beams are also decreasing (see Figure 1). This explains why there is less

and less net energy gained around the middle of the helical beams with increasing mode index m (see Figure 4).

In Figure 5, the histograms of the energy $\Delta\mathcal{E}_i$ and the polar angle ϕ_i of electrons are shown after the interaction with the pulse. Here, the 3-dimensional polar angle is $\phi_i = \arccos(z_i/R_i)$, where $R_i = \sqrt{x_i^2 + y_i^2 + z_i^2}$ is the radial distance from the origin. All histograms correspond to a CP laser of $P_0 = 10$ PW power and $\Delta w_0 = 11\lambda_0$ spot. In Figure 5, (a0), (b0) and (a1, b1) show the histograms of energy and polar angle corresponding to LG_{00} and LG_{01} beams. Similarly, Figures (a2), (b2), (a3), (b3) and (a4), (b4), (a5), (b5) show the outcome from the helical beams LG_{02} , LG_{03} and LG_{04} , LG_{05} .

These histograms once again reflect the difference in the ponderomotive force and its influence on the energy gain as well as the angular distribution of electrons. Due to the interaction with the pulse, the electrons have scattered out with ϕ_i polar angle. In case of the fundamental Gaussian beam, this polar angle is predominantly in the direction

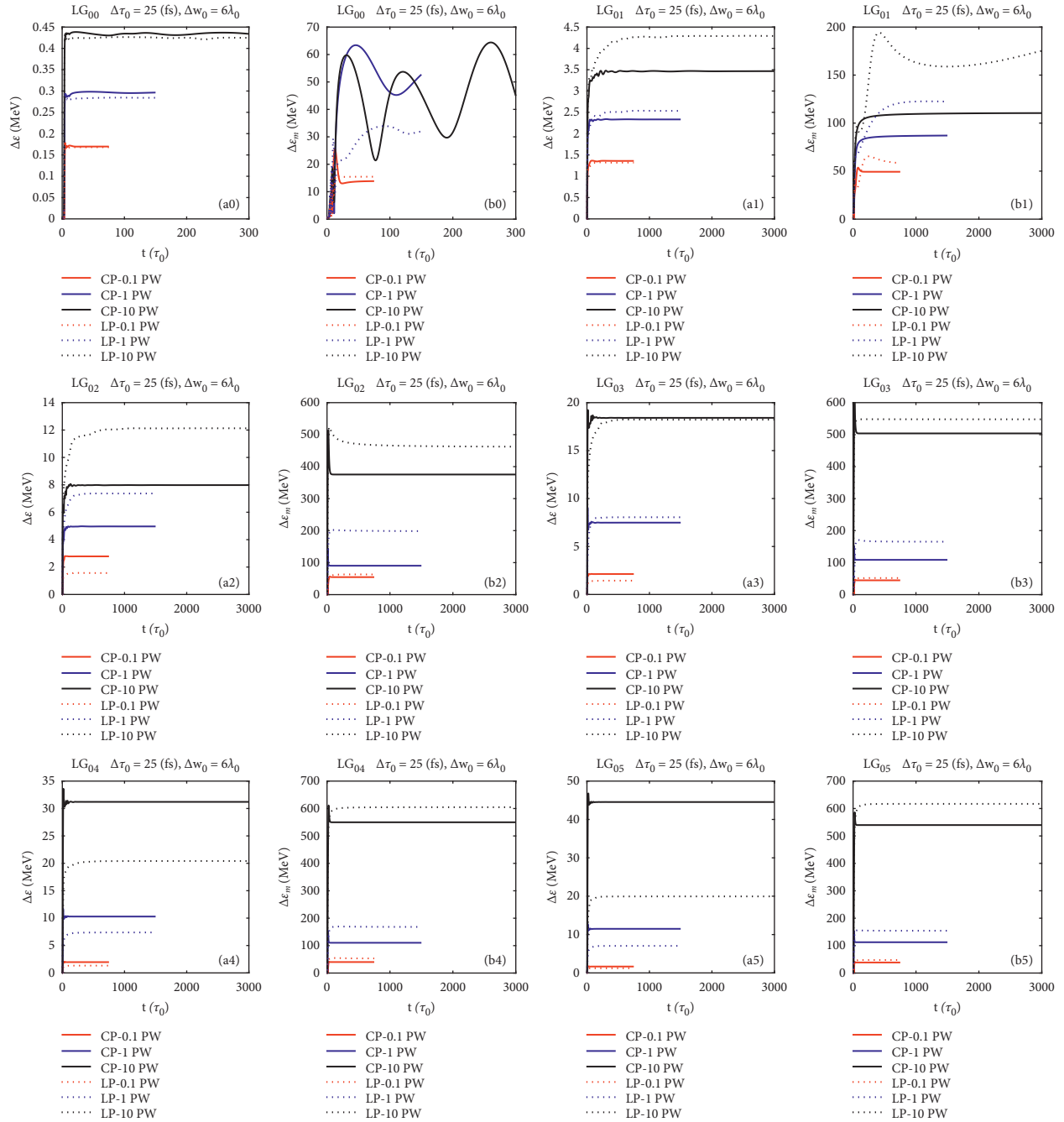


FIGURE 6: Lasers with $\Delta\tau_0 = 25$ fs pulse duration and $\Delta w_0 = 6\lambda_0$ beam waist radius. The full and dotted lines correspond to a CP and LP laser of $P_0 = \{0.1, 1, 10\}$ PW power, with red, blue, and black, respectively. (a0) The time evolution of the mean net energy gain of electrons; (b0) the time evolution of the highest energy electron, $\Delta\mathcal{E}_m$; both correspond to Gaussian pulses of different powers and polarizations. (a1, b1) The energy gains corresponding to the LG₀₁ helical beam, (a2, b2) LG₀₂ and (a3, b3) LG₀₃ helical beams, and (a4, b4) LG₀₄ and (a5, b5) LG₀₅ helical beams.

orthogonal to the direction of laser propagation, i.e., $\phi_i \geq 80$ degrees. For helical beams with increasing azimuthal mode, we observe an increasing number of electrons that are scattered parallel to the longitudinal axis, at polar angles of $0 \leq \phi_i < 15$ degree, and, at the same time, fewer electrons in the orthogonal directions. This obviously means that helical beams lead to a larger number of collimated electrons than

fundamental Gaussian beams, while their number is also increasing with increasing mode index.

Furthermore, the distribution of energy gain is also different in helical beams. The electrons are distributed following a multimodal distribution, leading to at least a second peak at finite energy at about 150 MeV energy for the helical beams, LG₀₃, LG₀₄, and LG₀₅. Although, here, we

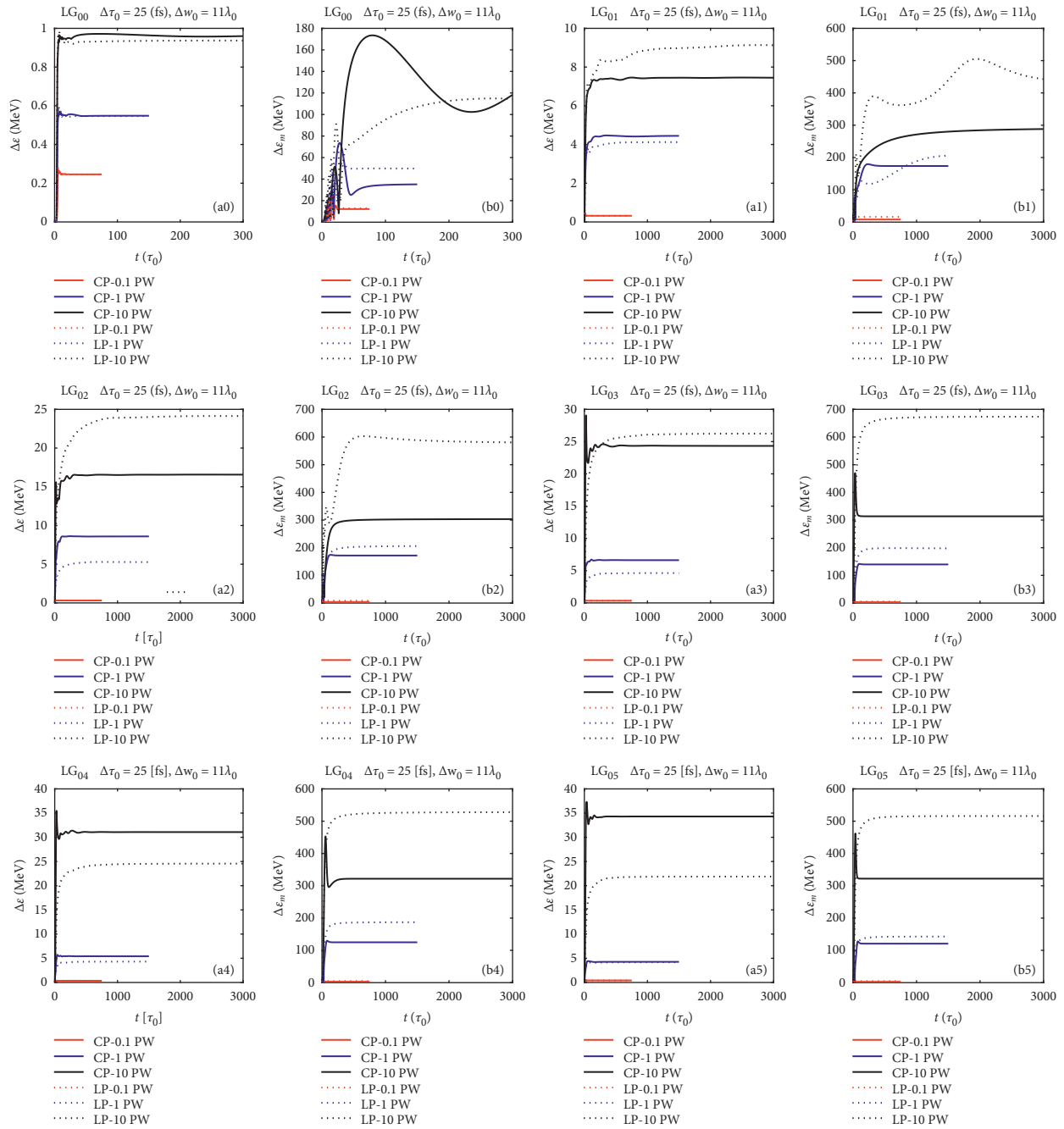


FIGURE 7: Similar to Figure 6. All figures correspond to lasers with $\Delta\tau_0 = 25$ fs and $\Delta w_0 = 11\lambda_0$ beam waist radius. The full and dotted lines correspond to a CP and LP laser of $P_0 = \{0.1, 1, 10\}$ PW power, with red, blue, and black, respectively.

have only shown the results for the $P_0 = 10$ PW laser, a very similar behavior is observed for the $P_0 = 1$ PW laser, with a peak at about 50 MeV energy. For a $P_0 = 0.1$ PW laser, the intensities of the helical beams are so weak such that these striking differences disappear.

In Figures 6–8 corresponding to initial beam waists of $\Delta w_0 = 6\lambda_0$, $\Delta w_0 = 11\lambda_0$, and $\Delta w_0 = 19\lambda_0$, we have plotted the average net energy and the largest energy gained, $\Delta\mathcal{E}_m$, both from circularly and linearly polarized LG_{0m} pulses. Here, the average energy is calculated from $\Delta\mathcal{E} = (1/N_e) \sum_{i=1}^{N_e} \Delta\mathcal{E}_i$, where $N_e = 6000$ is the number of

electrons. These averages are shown with full lines for circularly polarized and with dotted lines for linearly polarized lasers. Similar as before, red, blue, and black, respectively, represent the power of the laser $P_0 = \{0.1, 1, 10\}$ PW. In Figures 6–8, (a0) and (b0) show the average energy gained within the fundamental Gaussian beams, while Figures (a1) and (b1) show the same for the helical beams LG_{01} with given waist. Figures (a2) and (b2) correspond to LG_{02} , while Figures (a3) and (b3) correspond to LG_{03} . Similarly, Figures (a4), (b4) and (a5), (b5) present the outcome for LG_{04} and LG_{05} helical beams.

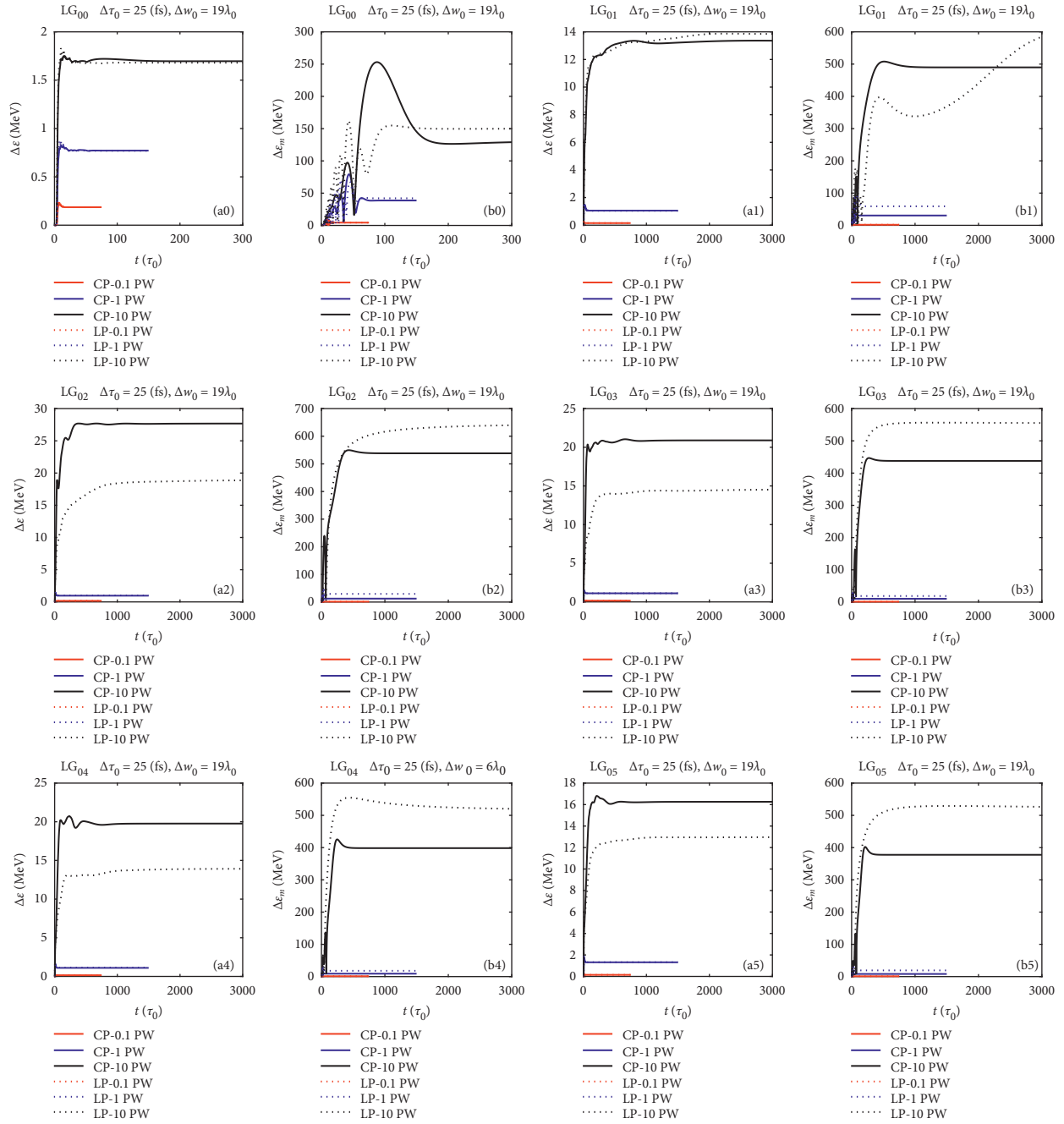


FIGURE 8: Similar to Figures 6 and 7. All figures correspond to lasers with $\Delta\tau_0 = 25$ fs and $\Delta w_0 = 19\lambda_0$ beam waist radius. The full and dotted lines correspond to a CP and LP laser of $P_0 = \{0.1, 1, 10\}$ PW power, with red, blue, and black, respectively.

We observe that the mean energy gain of electrons for any given laser power is largest for an optimal waist, and this optimal waist is increasing with increasing laser power. Therefore, for a $P_0 = 0.1$ PW laser, the optimal waist size is $\Delta w_0 = 6\lambda_0$, compare the mean energies, i.e., the red lines, in Figures 6–8. Similarly, by comparing the blue lines, for a $P_0 = 1$ PW laser, the waist size that leads to the largest energy gains is $\Delta w_0 = 11\lambda_0$, while for a $P_0 = 10$ PW laser, the optimal waist size is $\Delta w_0 = 19\lambda_0$, in accordance with the results of Section 3.1.

On the contrary, we also recognize that the average energy gain in helical beams is increasing with increasing azimuthal index $|m| \geq 1$. This is evident by comparing the blue and black lines in Figures 6–8. For a larger initial waist, there is larger energy gain for higher laser power. However, in Figure 8, we also observe that, for the largest waist and largest laser power, the average energy is increasing up to $|m| \leq 3$, while it is decreasing for higher modes. This was somewhat expected based on Figure 2, meaning that, for the highest power lasers with $|m| \geq 3$

modes, the optimal waist should be smaller than $\Delta w_0 \leq 19\lambda_0$.

The effect of laser polarization on energy gain is a delicate matter as already suggested by Figure 2. The average net energy gain in fundamental Gaussian beams is largely independent on the polarization. However, for helical beams, the outcome is different in each case depending on the beam waist and mode index, and therefore, the difference is from a few percent to up to 50%. We have also observed that a larger average energy gain slightly favors the circularly polarized helical beams with mode indices $|m| \geq 3$ for any beam waist and laser power. For linearly polarized helical beams, the optimal waist size should be slightly smaller than in the circularly polarized case to obtain similar energy gains, as can be concluded from the results.

The average net energy gain in Gaussian pulses, for the highest laser power and largest waist, is less than 2 MeV, while the highest energy electrons are $\mathcal{E}_{\max} \approx 150$ MeV (see Figure 8). As previously discussed, the energy gains in fundamental Gaussian pulses may be a little higher for optimal beam waists [27], but even so, these values are easily surpassed in helical beams leading to an average of about a few and up to 45 MeV, and, in some cases, with highest energy electrons of $\mathcal{E}_{\max} \approx 650$ MeV or more. Such energy gains are still below than the so-called ponderomotive limit $\Delta\mathcal{E} \approx m_e c^2 a_0^2 / 2$ [21, 47], where the intensity maxima of higher-order helical beams can be more than 5 times lower than those of Gaussian beams.

4. Conclusions

In this paper, we have studied and compared the direct laser-driven electron acceleration in Laguerre–Gaussian beams with azimuthal mode indices, LG_{00} corresponding to the fundamental Gaussian beam, and helical beams LG_{01} , LG_{02} , LG_{03} , LG_{04} , and LG_{05} .

We have found that the acceleration of electrons from rest is vastly different in helical beams compared to the fundamental Gaussian beam, mainly due to the difference in ponderomotive forces. Most importantly, for relatively tight initial waists, the helical beams lead to at least an order of magnitude larger energy gain compared to the fundamental Gaussian beam, and this energy gain also increases with the azimuthal mode $|m| \geq 1$.

For laser powers of $P_0 = \{0.1, 1, 10\}$ PW, the optimal waist of helical beams leading to the most energetic electrons is more than twice smaller, $\Delta w_0 = \{6, 11, 19\}\lambda_0$, than in the case of the fundamental Gaussian beam [27]. This also means that the beam waist that is optimal for helical beams is suboptimal for the Gaussian beam, and vice versa.

Finally, compared to Gaussian beams, the electron trajectories in helical beams are confined in the direction of the laser propagation leading to collimated electrons with trajectories that are at least an order of magnitude longer in the direction of the laser propagation. These conclusions hold for both linearly and circularly polarized lasers.

Data Availability

The data used to support the findings of this study are included within the article.

Conflicts of Interest

The authors declare that they have no conflicts of interest.

Acknowledgments

The authors are thankful to S. Ataman, D. Doria, J. F. Ong, K. Tanaka, and S. Tzenov for corrections and suggestions. E. Molnár thanks H. S. Ghotra for the comparison of early results and valuable discussions. D. Stutman acknowledges the support by a grant of the Ministry of Education and Research, CNCS-UEFISCDI (project no. PN-IIIP4-ID-PCCF-2016–0164), within PNCDI III. The authors are thankful for the financial support from the Nuclei Project (PN 19060105).

References

- [1] L. Allen, M. W. Beijersbergen, R. J. C. Spreeuw, and J. P. Woerdman, “Orbital angular momentum of light and the transformation of Laguerre-Gaussian laser modes,” *Physical Review A*, vol. 45, no. 11, pp. 8185–8189, 1992.
- [2] D. G. Grier, “A revolution in optical manipulation,” *Nature*, vol. 424, no. 6950, pp. 810–816, 2003.
- [3] G. Gibson, J. Courtial, M. J. Padgett et al., “Free-space information transfer using light beams carrying orbital angular momentum,” *Optics Express*, vol. 12, no. 22, pp. 5448–5456, 2004.
- [4] J. P. Torres and L. Torner, *Twisted Photons: Applications of Light with Orbital Angular Momentum*, Wiley VCH, Weinheim, Germany, 2011.
- [5] J. Wang, J.-Y. Yang, I. M. Fazel et al., “Terabit free-space data transmission employing orbital angular momentum multiplexing,” *Nature Photon*, vol. 6, no. 7, pp. 488–496, 2012.
- [6] M. Krenn, J. Handsteiner, M. Fink et al., “Twisted light transmission over 143 km,” *Proceedings of the National Academy of Sciences*, vol. 113, no. 48, pp. 13648–13653, 2016.
- [7] X. Zhang, B. Shen, S. Yin et al., “Generation of intense high-order vortex harmonics,” *Physical Review Letters*, vol. 114, Article ID 173901, 2015.
- [8] L. B. Ju, T. W. Huang, K. D. Xiao et al., “Controlling multiple filaments by relativistic optical vortex beams in plasmas,” *Physical Review E*, vol. 94, Article ID 033202, 2016.
- [9] L. B. Ju, C. T. Zhou, K. Jiang et al., “Manipulating the topological structure of ultrarelativistic electron beams using Laguerre-Gaussian laser pulse,” *New Journal of Physics*, vol. 20, Article ID 063004, 2018.
- [10] C. Baumann and A. Pukhov, “Electron dynamics in twisted light modes of relativistic intensity,” *Physics of Plasmas*, vol. 25, no. 8, Article ID 083114, 2018.
- [11] L.-X. Hu, T.-P. Yu, Y. Lu et al., “Dynamics of the interaction of relativistic Laguerre-Gaussian laser pulses with a wire target,” *Plasma Physics and Controlled Fusion*, vol. 61, Article ID 025009, 2019.
- [12] Y.-Y. Chen, K. Z. Hatsagortsyan, and C. H. Keitel, “Generation of twisted γ -ray radiation by nonlinear Thomson scattering of twisted light,” *Matter and Radiation at Extremes*, vol. 4, no. 2, Article ID 024401, 2019.

- [13] J. Luís Martins, J. Vieira, J. Ferri, and T. Fülöp, “Radiation emission in laser-wakefields driven by structured laser pulses with orbital angular momentum,” *Scientific Reports*, vol. 9, no. 1, p. 9840, 2019.
- [14] G.-B. Zhang, M. Chen, J. Luo et al., “Acceleration of on-axis and ring-shaped electron beams in wakefields driven by Laguerre-Gaussian pulses,” *Journal of Applied Physics*, vol. 119, no. 10, Article ID 103101, 2016.
- [15] R. Nuter, P. Korneev, E. Dmitriev, I. Thiele, and V. T. Tikhonchuk, “Gain of electron orbital angular momentum in a direct laser acceleration process,” *Physical Review E*, vol. 101, Article ID 053202, 2020.
- [16] D. R. Blackman, R. Nuter, P. Korneev, and V. T. Tikhonchuk, “Kinetic plasma waves carrying orbital angular momentum,” *Physical Review E*, vol. 100, Article ID 013204, 2019.
- [17] D. R. Blackman, R. Nuter, P. Korneev, and V. T. Tikhonchuk, “Nonlinear Landau damping of plasma waves with orbital angular momentum,” *Physical Review E*, vol. 102, Article ID 033208, 2020.
- [18] M. Vaziri, M. Golshani, S. Sohaily, and A. Bahrampour, “Electron acceleration by linearly polarized twisted laser pulse with narrow divergence,” *Physics of Plasmas*, vol. 22, Article ID 033118, 2015.
- [19] H. Akou and A. S. Firouzjaei, “Direct electron bunch acceleration by Laguerre-Gauss laser pulse direct electron bunch acceleration by Laguerre-Gauss laser pulse,” *Physics of Plasmas*, vol. 27, no. 9, Article ID 093102, 2020.
- [20] J. L. Chaloupka, Y. Fisher, T. J. Kessler, and D. D. Meyerhofer, “Single-beam, ponderomotive-optical trap for free electrons and neutral atoms,” *Optics Letters*, vol. 22, no. 13, pp. 1021–1023, 1997.
- [21] G. V. Stupakov and M. S. Zolotarev, “Ponderomotive laser acceleration and focusing in vacuum for generation of attosecond electron bunches,” *Physical Review Letters*, vol. 86, no. 23, pp. 5274–5277, 2001.
- [22] Q. Kong, S. Miyazaki, S. Kawata et al., “Electron bunch trapping and compression by an intense focused pulse laser,” *Physical Review E*, vol. 69, Article ID 056502, 2004.
- [23] S. Miyazaki, S. Kawata, Q. Kong et al., “Generation of a microelectron beam by an intense short pulse laser in the TEM(1, 0) + TEM(0, 1) mode in vacuum,” *Journal of Physics D: Applied Physics*, vol. 38, no. 11, pp. 1665–1673, 2005.
- [24] Y. Y. Li, Y. J. Gu, Z. Zhu et al., “Direct laser acceleration of electron by an ultra intense and short-pulsed laser in underdense plasma,” *Physics of Plasmas*, vol. 18, Article ID 053104, 2011.
- [25] E. Abramochkin and V. Volostnikov, “Beam transformations and nontransformed beams,” *Optics Communications*, vol. 83, no. 1-2, pp. 123–135, 1991.
- [26] K. A. Tanaka, K. M. Spohr, D. L. Balabanski et al., “Current status and highlights of the ELI-NP research program,” *Matter and Radiation at Extremes*, vol. 5, Article ID 024402, 2020.
- [27] E. Molnar, D. Stutman, and C. Ticos, “Optimizing direct laser-driven electron acceleration and energy gain at ELI-NP,” *European Physical Journal D*, vol. 74, p. 229, 2020.
- [28] A. E. Siegman, *Lasers*, University Science Books, Revised edition, 1986.
- [29] P. F. Goldsmith, *Quasioptical Systems: Gaussian Beam Quasioptical Propagation and Applications*, Wiley-IEEE Press, Hoboken, NJ, USA, 1998.
- [30] P. González de Alaiza Martínez, G. Duchateau, B. Chimier et al., “Maxwell-consistent, symmetry- and energy-preserving solutions for ultrashort-laser-pulse propagation beyond the paraxial approximation,” *Physical Review A*, vol. 98, Article ID 043849, 2018.
- [31] A. P. L. Robinson, A. V. Arefiev, and D. Neely, “Generating “superponderomotive” electrons due to a non-wake-field interaction between a laser pulse and a longitudinal electric field,” *Physical Review Letters*, vol. 111, Article ID 065002, 2013.
- [32] T. Kirk, “McDonald,” <https://www.physics.princeton.edu/mcdonald/examples/axicon.pdf>.
- [33] T. Kirk, “McDonald,” <https://www.physics.princeton.edu/mcdonald/examples/gaussian2.pdf>.
- [34] J. F. Ong, T. Moritaka, and H. Takabe, “The suppression of radiation reaction and laser field depletion in laser-electron beam interaction,” *Physics of Plasmas*, vol. 25, Article ID 033113, 2018.
- [35] A. Longman and R. Fedosejevs, “Optimal Laguerre-Gaussian modes for high-intensity optical vortices,” *Journal of the Optical Society of America A*, vol. 37, no. 5, p. 841, 2020.
- [36] J. D. Jackson, *Classical Electrodynamics*, John Wiley & Sons, New York, NY, USA, 3rd edition, 1999.
- [37] F. V. Hartemann, S. N. Fochs, G. P. Le Sage et al., “Nonlinear ponderomotive scattering of relativistic electrons by an intense laser field at focus,” *Physical Review E*, vol. 51, no. 5, pp. 4833–4843, 1995.
- [38] F. V. Hartemann, J. R. Van Meter, A. L. Troha et al., “Three-dimensional relativistic electron scattering in an ultrahigh-intensity laser focus,” *Physical Review E*, vol. 58, no. 4, pp. 5001–5012, 1998.
- [39] E. Esarey, P. Sprangle, and J. Krall, “Laser acceleration of electrons in vacuum,” *Physical Review E*, vol. 52, no. 5, pp. 5443–5453, 1995.
- [40] B. Quesnel and P. Mora, “Theory and simulation of the interaction of ultraintense laser pulses with electrons in vacuum,” *Physical Review E*, vol. 58, p. 3791, 1998.
- [41] Y. I. Salamin and C. H. Keitel, “Electron acceleration by a tightly focused laser beam,” *Physical Review Letters*, vol. 88, Article ID 095005, 2002.
- [42] Y. I. Salamin, “Electron acceleration from rest in vacuum by an axicon Gaussian laser beam,” *Physical Review A*, vol. 73, Article ID 043402, 2006.
- [43] D. N. Gupta, N. Kant, D. E. Kim, and H. Suk, “Electron acceleration to GeV energy by a radially polarized laser,” *Physics Letters A*, vol. 368, no. 5, pp. 402–407, 2007.
- [44] X. P. Zhang, W. Wang, Y. J. Xie, P. X. Wang, Q. Kong, and Y. K. Ho, “Field properties and vacuum electron acceleration in a laser beam of high-order Laguerre-Gaussian mode,” *Optics Communications*, vol. 281, no. 15-16, pp. 4103–4108, 2008.
- [45] P.-L. Fortin, M. Pieche, and C. Varin, “Direct-field electron acceleration with ultrafast radially polarized laser beams: scaling laws and optimization,” *Journal of Physics. B, Atomic, Molecular and Optical Physics*, vol. 43, Article ID 025401, 2010.
- [46] F. He, W. Yu, P. Lu et al., “Ponderomotive acceleration of electrons by a tightly focused intense laser beam,” *Physical Review E*, vol. 68, Article ID 046407, 2003.
- [47] I. Y. Dodin and N. J. Fisch, “Relativistic electron acceleration in focused laser fields after above-threshold ionization,” *Physical Review E*, vol. 68, Article ID 056402, 2003.