

**Positions Available**

**RESEARCH GROUP LEADER**

Will develop and supervise the research and service activities of a highly complex (inorganic chemistry) scientific laboratory. Doctorate degree in a highly relevant area of science or an equivalent combination of education and experience required. Four to five years of research and supervisory experience also required. Facility currently located on the University of Missouri's Columbia campus. Must be willing to relocate when the facility is permanently moved to the Rolla campus. Salary commensurate with qualifications. Excellent fringe benefits. Application deadline: **September 8, 1992**. For application forms, contact: Human Resource Services, 109 Altman Hall, University of Missouri-Rolla, Rolla, MO 65401 or call (314) 341-4241.

*UMR is an Affirmative Action/  
Equal Opportunity Employer.  
Women and minorities are encouraged to apply.*

**PROFESSOR OF CERAMIC  
POWDER TECHNOLOGY**

**Swiss Federal Institute  
of Technology Lausanne  
L'Ecole Polytechnique  
Fédérale de Lausanne (EPFL)**

L'Ecole Polytechnique Fédérale de Lausanne announces the opening of a tenured position responsible for the direction of the Ceramic Powder Technology Laboratory of the Department of Materials Science and Engineering. Women are particularly welcome.

Deadline for application: **31 August 1992**. The successful candidate will enter into service to mutual agreement.

For further information concerning the position, please write to:

Secrétariat général de l'Ecole  
Polytechnique Fédérale de Lausanne  
CE-Ecublens - 1015 LAUSANNE,  
SUISSE

**FACULTY POSITION**

Yale University, Department of Mechanical Engineering invites applications for a faculty position at the level of assistant or term associate professor. Candidates should have research interests and expertise in micromechanics of materials. Qualifications including PhD in a related field, commitment to undergraduate and graduate teaching, and potential for developing strong and externally sponsored research programs in the field. Applications are accepted until **October 30, 1992**. Please send a resume, a statement of teaching and research interests, copies of three principal publications (where appropriate), and names, addresses, and telephone numbers of three references to: Chair, Search Committee, Department of Mechanical Engineering, P.O. Box 1968, Yale University, New Haven, CT 06520-1968.

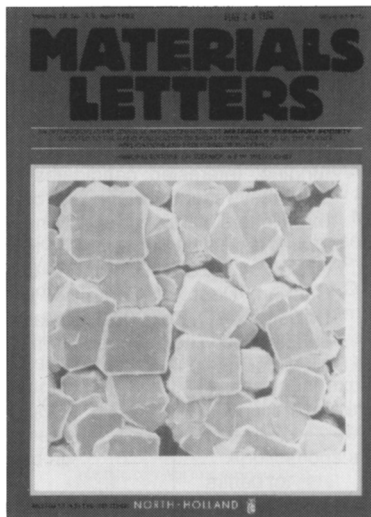
*Yale University is an Affirmative Action, Equal Opportunity Employer.*

**Advertisers in this issue:**

Balzers	7
Bomem	14
Depths of the Earth Company	9
Digital Instruments	5
EG&G Ortec	13
Elsevier	73, 75
The Gem Dugout	44
Gordon and Breach	77
High Voltage Engineering Europa B.V.	inside front cover
Lake Shore Cryotronics	back cover
MMR Technologies	11
Nikko Trading Corporation	15
Park Scientific	3
Philips Electronics	6
Quantum Design	inside back cover
VCH	44
Virginia Semiconductor	54
Voltaix	10

For free information about the products and services offered in this issue, fill out and mail the Reader Service Card, or FAX it to (312) 922-3165.

**SPECIAL NOTICE TO MRS MEMBERS:**



1992 Members of the Materials Research Society may subscribe to MATERIALS LETTERS for the special rate of \$36. You will receive Volumes 12, 13 and 14.

Order your subscription today from:

Materials Research Society  
9800 McKnight Road  
Pittsburgh, PA 15237  
(412) 367-3012  
FAX (412) 367-4373