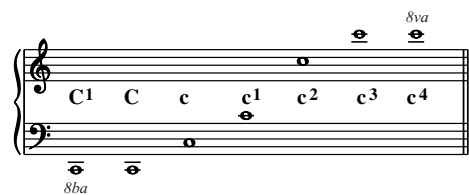


## GUIDELINES FOR CONTRIBUTORS

- 1 The journal has a broad remit and welcomes submissions featuring any materials and methods relating to music of the long eighteenth century (c1660–1830). Full-length articles should normally be between 6,000 and 10,000 words long, short articles up to 3,000 words and reviews up to 1,500 words. Please consult the editors in cases where you wish to exceed these limits.
- 2 Submissions should be made by sending (a) an email attachment to <18cmusic@kcl.ac.uk> and (b) one hard copy to the editorial address: Eighteenth-Century Music, Department of Music, King's College London, Strand, London WC2R 2LS, United Kingdom. Submissions will not be returned unless specifically requested by the author. Books, editions and recordings for review should be sent to David R. M. Irving, Christ's College, Cambridge CB2 3BU, England, UK.
- 3 Submissions should include a separate covering file (and hard-copy equivalent) giving full title of the work, word count (including footnotes), details of the wordprocessing software used (Microsoft Word or Word Perfect), file type of the main submission, name of the writer, affiliation (if any) and full contact details (email and postal address, phone number), while the main document itself should not identify the author in any way. (This also means deleting author information by going to File-Properties.) This allows for anonymous review of the material by readers, where the editors wish to seek further opinion. In the case of a full-length article, an abstract should also be presented within the submission itself, preceding the main text.
- 4 Please present double-spaced copy, with the printed version being printed on one side of the paper only, allowing ample margins and avoiding justification of right-hand margins and automatic hyphenation. Paragraphs should be indicated with indentations rather than empty lines, and these indentations should be made with tab stops, not by spacing. Endnotes should be produced with the endnote facility in your word-processing programme, not as regular text at the end of the article. Endnotes, captions, music examples, figures and tables should be numbered consecutively and given separately at the end, in that order. The desired location within the text for all exemplifying material should be indicated, normally as an entry within square brackets on a separate line following the end of a paragraph. Please spell out 'Example', 'Figure' and 'Table' in full. Music examples should in all cases give full details of the source or edition from which they are derived.
- 5 Contributors who wish to reproduce illustrative material as figures should provide good-quality copy in an electronic file (preferably in tiff format), full details of the

source and the full address of the copyright holder if this differs from the latter. Any inclusion of such material will be at the discretion of the editors. Contributors are responsible for obtaining permission to reproduce any material for which they do not hold copyright and for ensuring that the appropriate acknowledgements are included in the typescript. The full address of the copyright holder should be provided.

- 6 Writers should adopt British spelling and style, including all British versions of musical terms. Single inverted commas should be used for quoted material, with double quotation marks reserved for quotations within quotations. Punctuation that is not part of the quoted material should occur outside closing inverted commas. Longer quotations should be set off, indented left without quotation marks. Prose citations should be in English unless the original is of particular interest, unpublished or inaccessible, in which case the original should be followed by a translation in parallel text. Capitalization of English titles (of music or books) should be maximized; for titles in other languages this should follow the customary style of the language concerned. Numbering should also be maximized (for instance, 'bars 45–46', 'pages 121–128'). Note also the following forms of reference: 13 August 1960, Op. 17 No. 4, Act 2 Scene 3, 1720s. Accidentals need only be spelt out in connection with key signatures ('F sharp major'); otherwise they should take their musical form. When giving page references, 'p.' and 'pp.' should always be omitted. For precise identification of pitch, use this system:



Writers should consult recent issues of the journal for further guidance on issues of form and style. More detailed information on the style of submissions may be found at the journal's website: <[www.journals.cambridge.org/ecm](http://www.journals.cambridge.org/ecm)>.

- 7 When a submission has been accepted for publication, after any revisions asked for by the editors have been satisfactorily completed, the author should send a copy of the final version as an email attachment. Pdf files should not be supplied for the main text. Any illustrative material should preferably be given in tiff rather than jpeg format. The publisher reserves the right to typeset material by conventional means if an author's final version proves unsatisfactory.



# Eighteenth-century *music*

VOLUME 6 · NUMBER 2 · SEPTEMBER 2009 · ISSN 1478-5706

## CONTENTS

155 Notes on Contributors

159 Editorial

### ARTICLES

161 Reconsidering an Early Exoticism: Viennese Adaptations of Hungarian-Gypsy Music around 1800  
Catherine Mayes

183 Music and 'Music' in Eighteenth-Century Meta-operatic Scores  
Alice Bellini

209 The Face of a Musical Genius: Thomas Hardy's Portrait of Joseph Haydn  
Alan Davison

229 Negating Opera through Opera: *Così fan tutte* and the Reverse of the Enlightenment  
Laurenz Lütteken

### REVIEWS

243 Books

274 Editions

283 Recordings

### COMMUNICATIONS

301 Reports

304 Conference Reports

#### Cambridge Journals Online

For further information about this journal please  
go to the journal website at:

[journals.cambridge.org/ecm](http://journals.cambridge.org/ecm)

**CAMBRIDGE**  
UNIVERSITY PRESS