



The Society for Healthcare Epidemiology of America

## 2000 SHEA/CDC Training Course in Hospital Epidemiology

### Program

The program will be held October 14-17, 2000 at the Cincinnati Marriott at RiverCenter, Covington, Kentucky. Timothy W. Lane, M.D., Julie Gerberding, M.D., and Gina Pugliese, R.N., M.S., will co-chair the program. This program, developed by the Society for Healthcare Epidemiology of America (SHEA), and the Centers for Disease Control and Prevention (CDC), is intended for infectious disease fellows and new hospital epidemiologists. It emphasizes hands-on exercises in which participants work in small groups to detect, investigate, and control epidemiological problems encountered in the hospital setting. These work sessions are supplemented with lectures and seminars covering fundamental aspects of hospital epidemiology and surveillance, epidemic investigation, transmission and control of nosocomial infections, disinfection and sterilization, employee health, isolation systems, regulatory compliance, and quality improvement.

### Who Should Attend

You should attend if you are a hospital epidemiologist or an infection control practitioner or if you are looking for a course that will provide you with the most current information concerning infection control practices and epidemiological methods in health care. This fundamental program will provide you with opportunities to find solutions to real situations that will occur in the hospital setting. Intensive problem solving sessions are supplemented with lectures and seminars presented by leading authorities.

### Scholarships

Scholarships in the amount of \$1,000 will be awarded to infectious disease fellows for the program to defray the special course fee for fellows of \$400 and expenses incurred in attending the training program.

Interested fellows must submit a letter of no more than one page describing why they would like to have additional training in hospital epidemiology. A letter from the fellow's program director outlining the applicant's qualifications and suitability

for the course also is required. The deadline for receipt of scholarship applications for the course is September 1, 2000. The SHEA Educational Activities Committee will select the scholarship recipients based on review of these letters. Winners will be notified in late September.

### Nominations

Please send scholarship applications to:

Timothy W. Lane, M.D.  
c/o The Society for Healthcare Epidemiology of America  
19 Mantua Road  
Mt. Royal, NJ 08061

### Fees

Individual Registrants	\$575
Fellows in Infectious Disease	\$400

### Credits

The Society for Healthcare Epidemiology of America (SHEA) is accredited by the Accreditation Council for Continuing Medical Education to sponsor continuing medical education for physicians.

The Society for Healthcare Epidemiology of America designates this continuing education activity for up to 23 hours in Category 1 of the Physician's Recognition Award of the American Medical Association.

### General Course Information

Information regarding the schedule, hotel and travel accommodations, discount airfare, and course fees are available from SHEA (856) 423-7222. Note that application for a scholarship does not constitute enrollment in the program. This must be done separately.

Scholarship Awards provided in part by an educational grant from Pfizer Pharmaceuticals.



Labs • NHO • Pratt • Roerig • Specialty  
U.S. Pharmaceuticals Group

# ONLY SOURCE for all 12 Guidelines

## Includes New HIV and HCV Post-Exposure Prophylaxis

### Twelve Guidelines (1984 - Present)

Catheter-Associated Urinary Tract Infections	Surgical Site Infection
Handwashing and Environmental Control	Isolation Precautions in Hospitals
HIV and HBV Exposure-Prone Procedures	Pneumonia
Tuberculosis	Vancomycin Resistance
IV Device-Related Infections	Infection Control in Healthcare Personnel
HIV Postexposure Prophylaxis	Occupational Exposure to Hepatitis C Virus

and Index of SHEA Position Papers  
Foreword by Julia S. Garner, RN, MN

**CDC Guidelines**  
for Surveillance  
Prevention & Control  
of Nosocomial Infections

**SHEA**

**All In One Single Volume for only**  
**\$99.00\***

**Order Today - Call 1-800-552-0076**

International Orders Call 414-884-4532

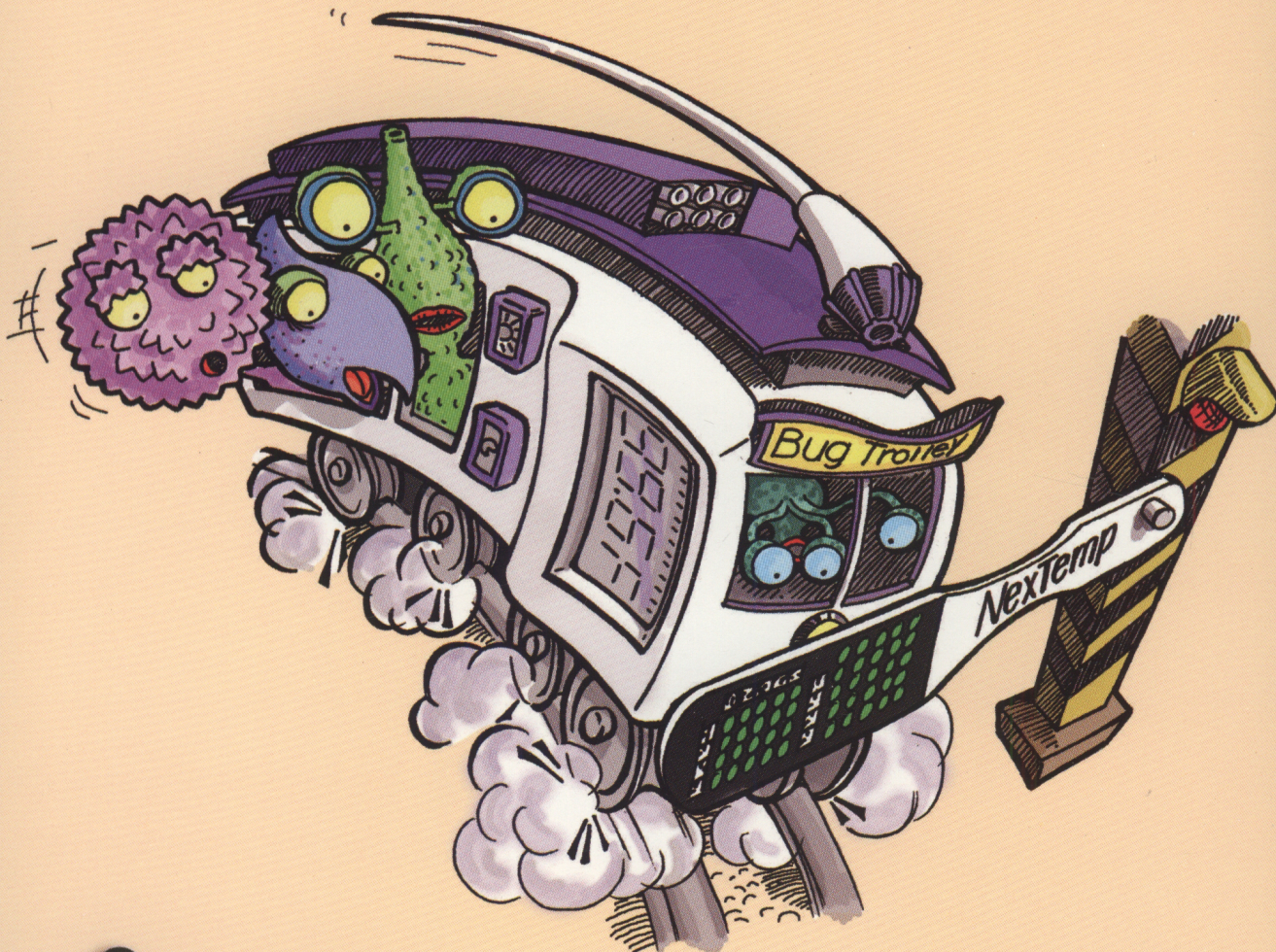
**Mention this ad for 10% discount!**

**www.ETNAComm.com**

\*Plus shipping & handling.

# The Bug Stops Here.

(Stop giving bugs a free ride on your thermometers.)



## The ugly truth.

Electronic thermometers are ideal vehicles for colonizing and spreading all sorts of nasty bugs from patient to patient.

## Introducing Two Inexpensive NexTemps™

Now there is a safe, accurate, inexpensive thermometer that eliminates the need for electronic Bug Trolleys

in your medical facility.

NexTemp "next generation" PPC Dot-Matrix devices are available in both Single-Use Overwrap Disposable Units and Dedicated Single-Patient Reusable Models. Nurses love NexTemp because it's always available and easy to use. There are no batteries to charge or replace, no calibration to deal with, no inventory control

issues...and best of all, no "ride sharing".

Awarded the CHCA Seal.



NexTemp thermometers were judged to be of superior quality by the Alliance of Children's Hospitals. See for yourself. Call 888.930.4599 for your free sample today.

## NexTemp™

[www.medicalindicators.com](http://www.medicalindicators.com)

**MEDICAL**  
INDICATORS

©2000 Medical Indicators, Inc. Carlsbad, CA 92009