

Erratum

In the article entitled "Familial Parkinson's Disease: A Clinical Genetic Analysis" (Can J Neurol Sci 1995; 22: 272-279) and the Erratum (Can J Neurol Sci 1996; 23: 90) Figures 1, 2 and 3 should have been printed as follows:

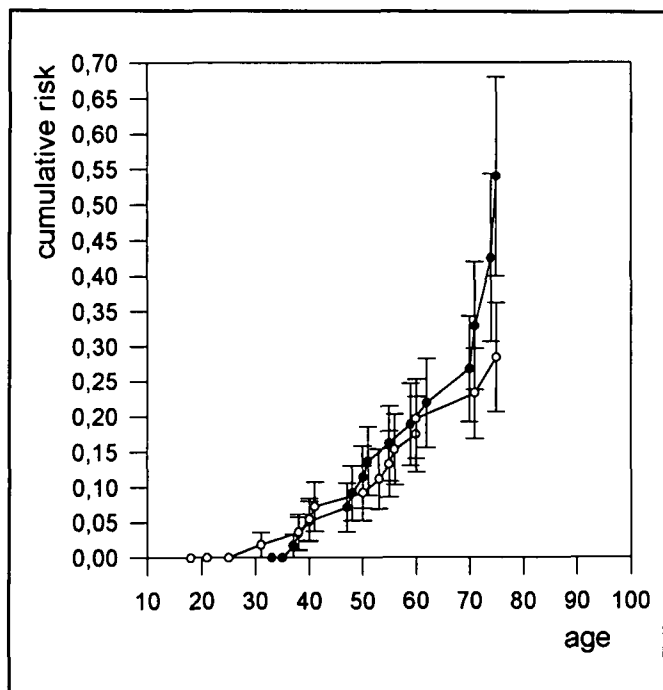


Figure 1: Estimated cumulative risk of PD (\pm standard errors) for non-proband siblings of multigeneration (●) and monogeneration (○) families.

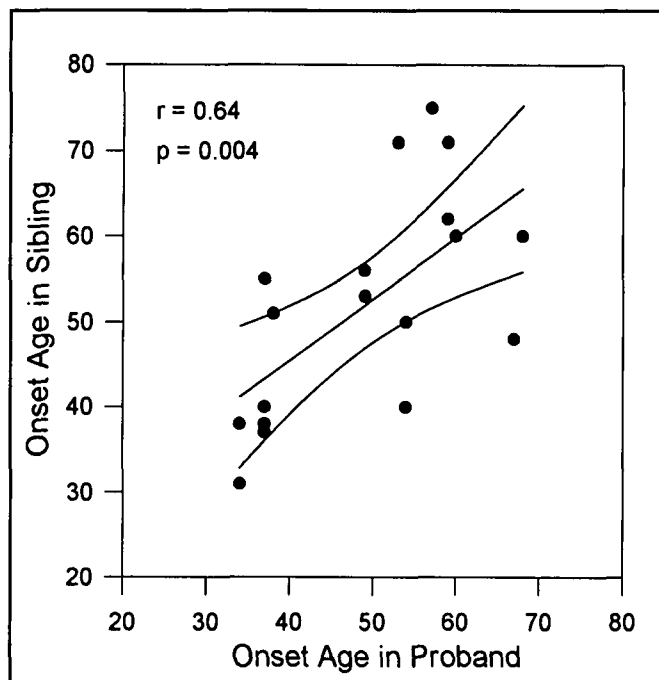


Figure 3: Linear regression analysis of the age of PD onset in probands and each of their affected siblings.

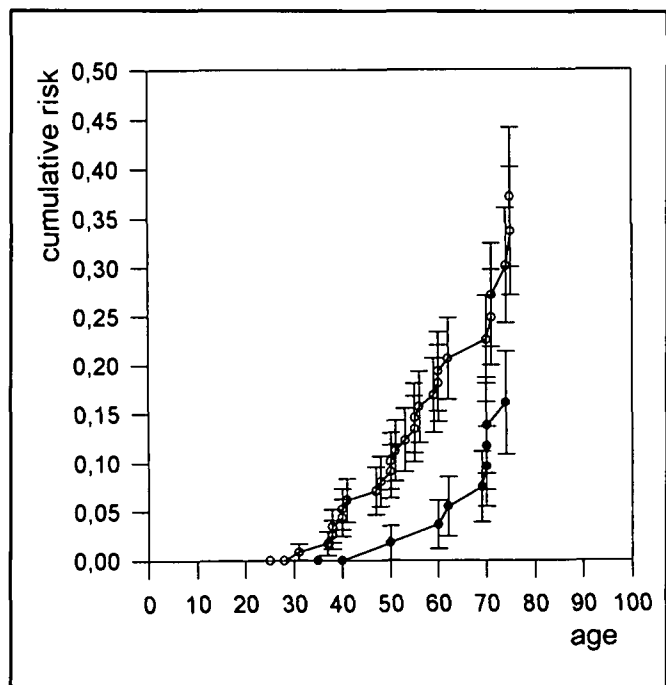


Figure 2. Estimated cumulative risk of PD (\pm standard errors) for siblings (○) and for parents (●) of probands within the 22 multicase families.