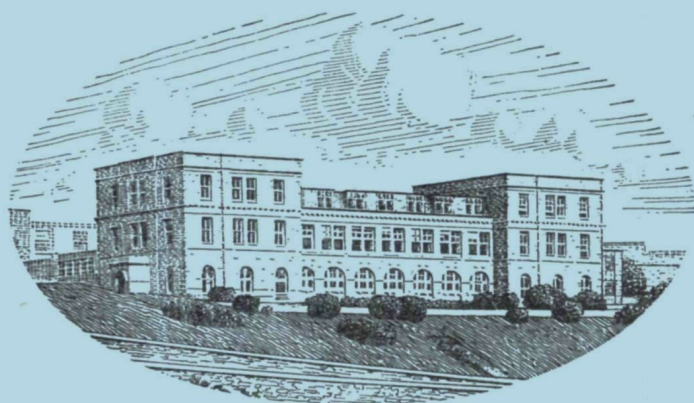


JOURNAL OF THE  
MARINE BIOLOGICAL ASSOCIATION  
OF THE UNITED KINGDOM



THE PLYMOUTH LABORATORY

VOLUME 48, No. 2

*(issued June 1968)*

CAMBRIDGE  
AT THE UNIVERSITY PRESS

1968

*Price £5 net*

*(U.S.A. \$16.75)*

*Annual Subscription for Volume (of three parts); £14 net (U.S.A. \$47.00)*

# THE MARINE BIOLOGICAL ASSOCIATION OF THE UNITED KINGDOM

## PATRON

H.R.H. THE PRINCE PHILIP DUKE OF EDINBURGH, F.R.S.

## OFFICERS AND COUNCIL

*President:* Prof. A. L. HODGKIN, Sc.D., F.R.S.

### *Vice-Presidents*

Prof. A. V. HILL, C.H., O.B.E., Sc.D., LL.D.,  
F.R.S.  
Sir EDWARD J. SALISBURY, Kt., C.B.E., D.Sc.,  
LL.D., F.R.S.  
Prof. Sir JAMES GRAY, Kt., C.B.E., M.C., Sc.D.,  
LL.D., F.R.S.

G. M. GRAHAM, C.M.G., O.B.E.  
Prof. Sir ALISTER C. HARDY, Kt., D.Sc., F.R.S.  
Sir C. MAURICE YONGE, Kt., C.B.E., D.Sc., F.R.S.  
Rear Admiral Sir EDMUND G. IRVING, K.B.E., C.B.  
Sir FREDERICK S. RUSSELL, Kt., C.B.E., D.S.C.,  
D.F.C., D.Sc., LL.D., F.R.S.

### *Honorary Members*

Prof. Sir JAMES GRAY, Kt., C.B.E., M.C., Sc.D.,  
LL.D., F.R.S.  
Prof. Sir ALISTER C. HARDY, Kt., D.Sc., F.R.S.  
E. H. E. HAVELOCK, C.B., C.B.E.  
Dr A. G. HUNTSMAN

Miss MARIE V. LEBOUR, D.Sc.  
Dr A. C. REDFIELD  
Prof. G. THORSON, D.Phil.  
Sir C. MAURICE YONGE, Kt., C.B.E., D.Sc., F.R.S.  
Prof. L. A. ZENKEVITCH

## COUNCIL

### Elected Members

Prof. R. B. CLARK, D.Sc.  
G. E. R. DEACON, C.B.E., D.Sc., F.R.S.  
Prof. J. M. DODD, Ph.D.  
R. S. GLOVER  
Prof. Sir JAMES GRAY, Kt., C.B.E.  
M.C., Sc.D., LL.D., F.R.S.  
J. P. HARDING, Ph.D.  
Rear Admiral Sir EDMUND G. IRVING, K.B.E., C.B.

Prof. O. E. LOWENSTEIN, D.Sc., F.R.S.  
C. E. LUCAS, C.M.G., D.Sc., F.R.S.  
J. W. LUND, D.Sc., F.R.S.  
Prof. R. A. MORTON, D.Sc., F.R.I.C., F.R.S.  
Prof. G. E. NEWELL, T.D., D.Sc.  
J. C. SWALLOW, Ph.D., F.R.S.  
Sir C. MAURICE YONGE, Kt., C.B.E., D.Sc., F.R.S.

### Governors

J. GRAHAM (Ministry of Agriculture, Fisheries  
and Food)  
The Worshipful Company of Fishmongers:  
Sir EDWARD R. CHADWYCK-HEALEY, Bt., M.C.  
Col. Sir JOHN G. CAREW POLE, Bt., D.S.O., T.D.  
The Hon. HUGH WALDORF ASTOR, J.P.  
Prof. J. W. S. PRINGLE, M.B.E., Sc.D., F.R.S.  
(Oxford University)

S. SMITH, Ph.D. (Cambridge University)  
EDWARD HINDLE, Sc.D., F.R.S. (British  
Association)  
Prof. G. P. WELLS, Sc.D., F.R.S. (Zoological  
Society)  
Prof. B. KATZ, M.D., D.Sc., F.R.S. (Royal Society)  
Prof. E. J. DENTON, Sc.D., F.R.S.  
(Physiological Society)

*Hon. Treasurer:* Sir EDWARD R. CHADWYCK-HEALEY, Bt., M.C., The Mill House,  
Hook, Basingstoke, Hants.

*Secretary:* J. E. SMITH, Sc.D., F.R.S., The Laboratory, Citadel Hill, Plymouth, Devon

## SCIENTIFIC STAFF

*Director:* J. E. SMITH, Sc.D., F.I.Biol., F.R.S.

D. P. WILSON, D.Sc., F.I.Biol., F.R.P.S. (*Zoologist*)  
L. H. N. COOPER, D.Sc., F.R.I.C., F.G.S., F.I.Biol.,  
F.R.S. (*Chemist*)  
G. M. SPOONER, M.B.E., M.A., F.R.E.S. (*Zoologist*)  
MARY W. PARKE, D.Sc., Ph.D., F.L.S., F.I.Biol.  
(*Phycologist*)  
P. G. CORBIN, B.A. (*Zoologist*)  
N. A. HOLME, M.A. (*Zoologist*)  
G. R. FORSTER, B.Sc. (*Zoologist*)  
E. D. S. CORNER, M.Sc., Ph.D. (*Biochemist*)  
A. J. SOUTHWARD, D.Sc., Ph.D. (*Zoologist*)

J. V. HOWARTH, B.Sc. (*Physiologist*)  
Q. BONE, M.A., D.Phil. (*Zoologist*)  
G. T. BOALCH, B.Sc., Ph.D. (*Phycologist*)  
G. W. BRYAN, B.Sc., Ph.D. (*Zoologist*)  
A. G. DAVIES, B.Sc., Ph.D. (*Physical Chemist*)  
P. E. GIBBS, B.Sc., M.A., Ph.D. (*Zoologist*)  
B. L. ROBERTS, B.A. (*Physiologist*)  
J. C. GREEN, Ph.D. (*Phycologist*)  
P. R. DANDO, Ph.D. B.Sc. (*Special appointment*  
*Biochemist*)

J. H. WICKSTEAD, D.Sc., Ph.D., Ministry of Overseas Development (*Zoologist*)  
Prof. E. J. DENTON, Sc.D., F.I.Biol., F.R.S. (*Physiologist*),  
Royal Society Research Professor of Bristol University

# JOURNAL OF THE MARINE BIOLOGICAL ASSOCIATION

## INSTRUCTIONS FOR THE PREPARATION OF MANUSCRIPTS

### TITLE

The title of the paper should be kept as short as possible.

The name of the author at the beginning of the paper should be followed only by senior qualifications.

### TEXT

Manuscripts must be typed (double-spaced) on one side of the paper, leaving ample margins, with the folios numbered. Words to be printed in italic should be underlined. The first mention of Latin names of species should be followed by the authority, except where reference is made to a work in which the authority appears (e.g. *Plymouth Marine Fauna*).

Manuscripts should be as concise as possible. Undue length will undoubtedly lead to delay in publication as the paper will be returned to the author for shortening.

All linear measurements and weights should be in the metric scale.

For symbols and abbreviations, the recommendations of the Royal Society (1951) are followed.

### TABLES

Tables should be set out on separate sheets numbered in Arabic numerals, and given a concise heading.

### TEXT-FIGURES

Text-figures should be in black ink. It is important to make the lines sufficiently black. Areas to be mechanically stippled should be indicated by light-blue pencil shading.

No drawing should be so large that it must be reduced to less than one-third of its original size. The degree of reduction need not be inserted by the author.

Illustrations requiring lettering should not be drawn on Ethulon.

The size of the printed area of the *Journal* page is 18 × 12 cm. The maximum size for a full-page figure (with legend) is 19½ × 13½ cm.

Lettering, numerals, etc., should be marked clearly in blue pencil and indicating the position in which they are to be inserted by an arrow in blue pencil. This should be kept to a workable minimum, all details being included in the legend.

Axes and graduation marks on graphs must be inked in. The lines on graph paper

are not normally reproduced, and should be blue or faint grey.

Legends for figures must be typed all together on a separate sheet, and not inserted on the actual illustrations.

Text-figures are numbered in arabic numerals, and referred to in the text as 'Fig. 1', etc. Where there is a plate containing several figures, the text-figures are referred to as 'Text-fig. 1', etc.

Divisions of plates, or separate figures on one plate, are indicated by capital letters.

All line-drawings are printed as text-figures, as well as photographs for which fine detail is not required.

### PLATES

Photographs should be on smooth-surfaced paper, semi-matt or glossy. The edges of the photograph must be trimmed square. It is important that the background in the photograph be of a uniform tone and free from blemishes. Where several photographs make up a single plate, they are numbered 'Fig. 1', etc.

### SUMMARY

Each paper must be accompanied by an informative Summary, giving the main results of the work published.

### REFERENCES

References are listed alphabetically at the end of the paper. The full title of the paper must be given. Titles of papers, but not of books, are decapitalized. Titles of Journals are abbreviated as in the *World List of Scientific Publications* (4th ed., 1963 on). Volume (Vol.), Band (Bd.), or Tome (T.) numbers are in Arabic numerals. Where a volume appears in parts the part need only be specified where each has separate pagination. References to books should include the publisher. Citations in text to be given by author's name followed by date in brackets.

#### Examples:

MARSHALL, S. M., NICHOLLS, A. G. & ORR, A. P., 1939. On the growth and feeding of young herring in the Clyde. *J. mar. biol. Ass. U.K.*, Vol. 23, pp. 427-55.

RUSSELL, F. S. & YONGE, C. M., 1928. *The Seas*. 379 pp. London: Frederick Warne.

**Authors are requested to see that their manuscripts are in finished form and completely ready for publication so that corrections may be reduced to a minimum, and these are confined as far as possible to the first proof. If the cost for corrections exceeds a reasonable figure, the author is liable to be charged to the full extent of the excess.**



SPRINGER-VERLAG  
BERLIN · HEIDELBERG · NEW YORK

# MARINE BIOLOGY

International Journal on Life in Oceans  
and Coastal Waters

**Editor in Chief:**

O. Kinne,  
Biologische Anstalt Helgoland,  
Palmaille 9, 2 Hamburg 50

**Volume 1/Number 2**

1968 1 volume (4 issues per volume)  
Price per volume DM 96, —; U.S. \$24.00 plus postage

**Editors:**

M. Anraku, Nagasaki  
B. Battaglia, Padua  
G. F. Humphrey, Cronulla, N.S.W.  
O. Kinne, Hamburg  
N. K. Panikkar, New Delhi  
J. M. Peres, Marseille  
E. A. Pora, Cluj  
J. E. Smith, Plymouth  
E. Steemann Nielsen, Copenhagen  
M. Vannucci, São Paulo  
M. E. Vinogradov, Moscow  
G. L. Voss, Miami

**Assistant to the Editors:**

N. Farmer, Hamburg

**Contents:** B. E. Hopper and S. P. Meyers: Population studies on benthic nematodes within a subtropical seagrass community.— V. Parvatheswararao: Some mechanisms of salinity acclimation in the euryhaline teleost, *Eetroplus maculatus*.—M. Oide and S. Utida: Changes in water and ion transport in isolated intestines of the eel during salt adaptation and migration.—T. J. Pandian: Transformation of food in the fish *Megalops cyprinoides*.—II. Influence of quantity of food.—G. Teuchert: Zum Protonephridialsystem mariner Gastrotichen der Ordnung Macrodasypoidea.—S. Chacko: The central nervous system of *Thenus Orientalis* (Leach).—S. P. Meyers, D. G. Ahearn, W. Gunkel, and F. J. Roth, Jr.: Yeasts from the North Sea.—T. L. Richards: Reproduction and development of the polychaete *Stauronereis rudolphi*, including a summary of development in the superfamily Eunicea.—S. Kečkeš and M. Krajnović: Antigenic specificity of the sea urchin sperm surface.—J. M. Barbaree and W. J. Payne: Products of denitrification by a marine bacterium as revealed by gas chromatography.—B. E. Hopper: Free-living marine nematodes from Biscayne Bay, Florida, I. Comesomatidae: The male of *Laimella longicauda* COBB, 1920, and description of *Actarjania* new genus.—B. E. Hopper: Free-living marine nematodes from Biscayne Bay, Florida, II. Oncholaimidae: descriptions of five new species and one new genus (*Meyersia*).

■ Sample copy on request!

# Elements of Marine Ecology:

## An Introductory Course

by R. V. Tait, BSc, LDS, RCSEng

This volume covers a wide field of marine ecology, relating the plant and animal population of the sea to their various habitats, including the pelagic environment, the sea bottom, shores and estuaries. It is excellent general reading for any student of zoology, and serves as a basic text for those wishing to specialize in marine biology.

The author begins with a general account of the oceans and indicates their major subdivisions in terms of inorganic and biological properties. He gives an introduction to the plankton, and provides a chapter on measuring and sampling techniques in oceanography and marine biology. There follows a more detailed discussion of various aspects of the marine environment in relation to populations, leading to a chapter on organic production in the sea and seasonal changes. There is a welcome summary on sea fisheries, covering ecological aspects of fish populations with special reference to the fishing industry.

The author writes from many years' experience of giving courses in marine biology, and his book will be of value to any student who needs a stimulating and concise account of the ecology of the seas. This volume also offers much to lecturers who have to give a compact course in this subject.

1968 304 pages illustrated 62s.

**BUTTERWORTHS**

88 KINGSWAY, LONDON, WC2

# The Journal of Experimental Biology

Edited by

V. B. WIGGLESWORTH & J. A. RAMSAY

Volume 48, No. 2. April 1968

**A. F. Huxley** A theoretical treatment of the reflexion of light by multilayer structures.

**P. Makings** Transpiration through the Slifer's patches of Acrididae (Orthoptera).

**Gordon F. Lund & Hugh Dingle** Seasonal temperature influence on vagal control of diving bradycardia in the frog (*Rana pipiens*).

**N. Millott & H. Okumura** The electrical activity of the radial nerve in *Diadema antillarum* Philippi and certain other echinoids.

**Sarah A. Corbet** The influence of *Ephestia kuehniella* on the development of its parasite *Nemeritis canescens*.

**P. N. R. Usherwood, H. I. Runion & J. I. Campbell** Structure and physiology of a chordotonal organ in the locust leg.

**M. E. Eldefrawi, A. Topozada, M. M. Salpeter & R. D. O'Brien** The location of penetration barriers in the ganglia of the American cockroach, *Periplaneta americana* (L.).

**D. W. Sutcliffe & J. Shaw** Sodium regulation in the amphipod *Gammarus duebeni* Lilljeborg from freshwater localities in Ireland.

**D. W. Sutcliffe** Sodium regulation and adaptation to fresh water in gammarid crustaceans.

**Albert D. Carlson** Effect of adrenergic drugs on the lantern of the larval *Photuris* firefly.

**Joan Johnston Kendig** Motor neurone coupling in locust flight.

**Jean T. DeBell & V. Sanchez** Influence of temperature on the transmembrane potential of *Ascaris* muscle cells.

**D. W. T. Crompton & A. P. M. Lockwood** Studies on the absorption and metabolism of D-(u-<sup>14</sup>C)glucose by *Polymorphus minutus* (Acanthocephala) *in vitro*.

**A. E. Brafield** The oxygen consumption of an echiuroid, *Bonellia viridis* Rolando.

**Fotis C. Kafatos** The labial gland: a salt-secreting organ of saturniid moths.

30s. net (\$5.00)

Annual subscription £8 net  
(\$28.00) for six issues

Published for

The Company of Biologists, Limited

CAMBRIDGE UNIVERSITY PRESS

*A new North-Holland Journal*

# JOURNAL OF EXPERIMENTAL MARINE BIOLOGY AND ECOLOGY

EDITOR:

HAROLD BARNES

*The Marine Station, Millport, Scotland*

Papers on all aspects of marine ecology—floristic or faunistic, littoral, inshore, offshore and deep sea—are acceptable. The Journal is intended, however, particularly to be a forum for work on the physiology, biochemistry and behaviour of organisms in relation to their ecology; experimental work on eco-systems and on individual organisms in relation to their ecology will be especially welcome. Although this kind of work will be stressed, papers of a descriptive character—particularly if they aim at elucidating or illuminating general ecological problems and principles—will be considered for inclusion. Articles on new techniques and methods, will, if their importance warrants it—be published, as will those concerned with ‘theoretical’ ecology.

One volume of the JOURNAL OF EXPERIMENTAL MARINE BIOLOGY AND ECOLOGY consists of 300 pages.

## ORDER FORM

Please send your order to your bookseller or subscription agent or directly to NORTH-HOLLAND PUBLISHING COMPANY—P.O. Box 103—AMSTERDAM, THE NETHERLANDS.

- Please enter my subscription to JOURNAL OF EXPERIMENTAL MARINE BIOLOGY AND ECOLOGY Vol. 2 (1968) at the subscription price of Hfl. 52,50 (£6. 3s.; \$14.70).
- Please send me Vol. 1 of JOURNAL OF EXPERIMENTAL MARINE BIOLOGY AND ECOLOGY at the price of Hfl. 52,50 (£6. 3s.; \$14.70).
- Please note my standing order for all future volumes to be supplied automatically as they appear.

NAME .....

FULL ADDRESS .....

DATE ..... SIGNATURE .....

Cheque enclosed.

Please bill me.

All orders must be accompanied by remittance, except those from institutional bodies or bookdealers who have an account with the Company.

AMSTERDAM  
P.O. BOX 103

**NORTH**



**HOLLAND**

PUBLISHING CO  
NETHERLANDS

# Journal of Cell Science

Volume 3, Number 1, March 1968

**Margaret E. McCully** Histological studies on the genus *Fucus*. III. Fine structure and possible functions of the epidermal cells of the vegetative thallus

**M. J. Berridge & B. L. Gupta** Fine-structural localization of adenosine triphosphatase in the rectum of *Calliphora*

**J. W. Smith & A. Serafini-Fracassini** The distribution of the proteinpolysaccharide complex in the nucleus pulposus matrix in young rabbits

**J. D. Dodge** The fine structure of chloroplasts and pyrenoids in some marine dinoflagellates

**R. Miledi & C. R. Slater** Some mitochondrial changes in denervated muscle

**J. D. Pickett-Heaps** Further ultrastructural observations on polysaccharide localization in plant cells

**A. J. Musgrave & I. Grinyer** Membranes associated with the disintegration of mycetozoa micro-organisms in *Sitophilus zeamais* (Mots.) (Coleoptera)

**F. B. P. Wooding** Radioautographic and chemical studies of incorporation into sycamore vascular tissue walls

**M. J. Ord** The viability of the anucleate cytoplasm of *Amoeba proteus*

**W. K. Blenkinsopp** Duration of availability of tritiated thymidine following intraperitoneal injection

**Muriel Walker & H. C. Macgregor** Spermatogenesis and the structure of the mature sperm in *Nucella lapillus* (L.)

**A. Wohlman & R. D. Allen** Structural organization associated with pseudopod extension and contraction during cell locomotion in *Diffugia*

**I. Friedmann, A. L. Colwin & Laura H. Colwin** Fine-structural aspects of fertilization in *Chlamydomonas reinhardtii*

**H. G. Davies** Electron-microscope observations on the organization of heterochromatin in certain cells

50s. net (\$8.50)

Annual Subscription £8 net (\$27.50)

Published for  
The Company of Biologists Ltd



CAMBRIDGE

# The Journal of General Microbiology

Volume 51, Part 2, April 1968

**D. C. H. McBrien & V. Moses** Compartmentation of the metabolism of lactose, galactose and glucose in *Escherichia coli*

**J. Lacey** The microflora of fodders associated with bovine respiratory disease

**O. J. Gillie** Growth of *Neurospora crassa* in unstirred liquid cultures

**O. J. Gillie** Observations on the tube method of measuring growth rate in *Neurospora crassa*

**F. Uruburu, V. Elorza & J. R. Villanueva** The fine structure of yeast regenerating proplasts

**M. M. Allen & R. Y. Stanier** Growth and division of some unicellular blue-green algae

**M. M. Allen & R. Y. Stanier** Selective isolation of blue-green algae from water and soil

**H. P. Charles & G. A. Roberts** Carbon dioxide as a growth factor for mutants of *Escherichia coli*

**P. H. Clarke, M. A. Houldsworth & M. D. Lilly** Catabolite repression and the induction of amidase synthesis by *Pseudomonas aeruginosa* 8602 in continuous culture

**J. M. Tweedy, R. W. A. Park & W. Hodgkiss** Evidence for the presence of fimbriae (pili) on *Vibrio* species

**M. L. Moffett & R. R. Colwell** Adansonian analysis of the Rhizobiaceae

**Y. Kurihara, J. M. Eadie, P. N. Hobson & S. O. Mann** Relationship between bacteria and ciliate protozoa in the sheep rumen

**R. C. Lawrence & J. C. Hawke** The oxidation of fatty acids by mycelium of *Penicillium roqueforti*

**J. F. Peberdy & M. Turner** The esterases of *Mortierella ramanniana* in relation to taxonomy

45s. net (\$7.50)

Annual subscription £25 net  
(\$87.50) for fifteen issues

Published for the  
Society of General Microbiology



CAMBRIDGE

# MARINE BIOLOGIST



## Group Leader

A Group Leader is required to take charge of a new biological laboratory located at Fawley, Hampshire. The main research objectives will be to investigate any changes in the marine flora and fauna brought about by organic and industrial wastes, to study how natural processes may lead to recovery from the effects of pollution and how temperature may alter the rate of these processes. The results obtained will be related to the cooling water requirements of power stations.

Candidates must have a good honours degree in biological science and have carried out original research in marine biology.

**Salary within ranges rising to maxima of £2630 or £3205 p.a. inclusive, according to qualifications and experience.**

Applications with full relevant details to N. Berryman, Personnel Officer (Headquarters), Central Electricity Generating Board, Sudbury House, 15 Newgate Street, E.C.1 as soon as possible. Quote Ref. 92/P.

**CENTRAL ELECTRICITY  
GENERATING BOARD**

## THE JOURNAL OF ECOLOGY

EDITOR: P. GREIG-SMITH

VOL. 56, No. 1

MARCH 1968

**R. H. Whittaker and G. M. Woodwell.** Dimension and production relations of trees and shrubs in the Brookhaven Forest, New York.

**P. Bannister.** An evaluation of some procedures used in simple ordinations.

**R. Mead.** Measurement of competition between individual plants in a population.

**B. H. Green.** Factors influencing the spatial and temporal distribution of *Sphagnum imbricatum* Hornsch. ex Russ. in the British Isles.

**R. G. H. Bunce.** An ecological study of Ysgolion Duon, a mountain cliff in Snowdonia.

**David R. Bouldin.** Models for describing the diffusion of oxygen and other mobile constituents across the mud-water interface.

**M. D. Barrow, A. B. Costin and P. Lake.** Cyclical changes in an Australian fjeldmark community.

**Brian Hopkins.** Vegetation of the Olokemji Forest Reserve, Nigeria. V. The vegetation on the savanna site with special reference to its seasonal changes.

**K. Loach.** Relations between soil nutrients and vegetation in wet-heaths. II. Nutrient uptake

by the major species in the field and in controlled conditions.

**D. J. Boatman and W. Armstrong.** A bog type in north-west Sutherland.

**M. E. D. Poore.** Studies in Malaysian rain forest. I. The forest on triassic sediments in Jengka Forest Reserve.

**M. P. Austin.** Pattern in a *Zerna erecta* dominated community.

**Dan Cohen.** A general model of optimal reproduction in a randomly varying environment.

**N. K. Kaushik and H. B. N. Hynes.** Experimental study on the role of autumn-shed leaves in aquatic environments.

**B. H. Green and M. C. Pearson.** The ecology of Wybunbury Moss, Cheshire. I. The present vegetation and some physical, chemical and historical factors controlling its nature and distribution.

BIOLOGICAL FLORA OF THE BRITISH ISLES

**A. Carlisle and A. H. F. Brown.** *Pinus sylvestris* L.

Reviews; Shorter Notices.

Subscription price £9. 9s. per volume of three parts (single parts 70s. each)

**BLACKWELL SCIENTIFIC PUBLICATIONS LTD.**

5 ALFRED STREET · OXFORD



# PROCEEDINGS OF THE MALACOLOGICAL SOCIETY OF LONDON

Vol. 38, Part 1, April 1968

£1. 5s. net, or \$4 U.S.

**W. D. Russell-Hunter, Robert T. Meadows, Martyn L. Apley and Albert J. Burky.** On the use of a 'wet-oxidation' method for estimates of total organic carbon in mollusc growth studies.

**A. M. Eisawy and A. E. Sorial.** The egg-masses, development and metamorphosis of *Strombus (Monodactylus) tricornis* Lamarck.

**J. A. Allen.** The functional morphology of *Crassinella mactracea* (Linsley) (Bivalvia: Astartacea).

**R. E. Baker.** The ecology of the wrinkled snail, *Helicella caperata* Mont. on the Braunton Burrows sand dune system.

**Eveline and Ernst Marcus.** On the prosobranchs *Ancilla dimidiata* and *Marginella fraterculus*.

**D. W. Halton and Gareth Owen.** The fine structure and histochemistry of the gastric cuticle of the protobranchiate bivalve, *Nucula sulcata* Bronn.

**Malcolm Edmunds.** Opisthobranchiate mollusca from Ghana.

**William J. Clench.** Notes on species of *Urocoptis* described by George C. Spence. Annual Report of the Council 1963-64

Annual subscription (three parts) 60s. (\$10) post free.

BLACKWELL SCIENTIFIC PUBLICATIONS LTD.

5 Alfred St, Oxford

## THE JOURNAL OF ANIMAL ECOLOGY

EDITORS: H. N. SOUTHERN and E. BROADHEAD

VOL. 37, No. 1

FEBRUARY 1968

Foreword by **Sir Alister Hardy.** Charles Elton's influence in ecology.

**P. H. Leslie, Thomas Park and David B. Mertz.** The effect of varying the initial numbers on the outcome of competition between two *Triboium* species.

**C. H. S. Watts.** The foods eaten by wood mice (*Apodemus sylvaticus*) and bank voles (*Clethrionomys glareolus*) in Wytham Woods, Berkshire.

**Richard S. Miller.** Conditions of competition between redwings and yellowheaded blackbirds.

**Peter Crowcroft and Gillian K. Godfrey.** The daily cycle of activity in two species of *Sminthopsis* (Marsupialia: Dasyuridae).

**H. N. Southern and V. P. W. Lowe.** The pattern of distribution of prey and predation in tawny owl territories.

**J. B. Whittaker.** Polymorphism of *Philaenus spumarius* (L.) (Homoptera, Cercopidae) in England.

**Dennis Chitty, David Pimentel and C. J. Krebs.** Food supply of overwintered voles.

**Edward W. Fager.** The community of invertebrates in decaying oak wood.

**Jiro Kikkawa.** Ecological association of bird species and habitats in eastern Australia; similarity analysis.

**Michael Smyth.** The effects of the removal of individuals from a population of bank voles *Clethrionomys glareolus*.

**Julian Rzóska.** Observations on zooplankton distribution in a tropical river dam-basin (Gebel Aulia, White Nile, Sudan).

**Charles H. Southwick and M. Rafiq Siddiqi.** Population trends of Rhesus monkeys in villages and towns of northern India.

**Kitty Paviour-Smith.** A population study of *Cis bilamellatus* Wood (Coleoptera, Ciidae).

**P. A. Larkin and J. G. McDonald.** Factors in the population biology of the sockeye salmon of the Skeena River.

**F. C. Evans and W. W. Murdoch.** Taxonomic composition, trophic structure and seasonal occurrence in a grassland insect community.

Subscription price £8 per volume of three parts (single parts 60s. each)

BLACKWELL SCIENTIFIC PUBLICATIONS LTD.

5 ALFRED STREET · OXFORD