



Transient Joule–Thomson cooling during CO₂ injection in depleted reservoirs

Lucy E.L. Tweed^{1,2,†}, Michael J. Bickle² and Jerome A. Neufeld^{1,2,3}

¹Institute for Energy and Environmental Flows, University of Cambridge, Cambridge CB3 0EZ, UK

²Department of Earth Sciences, University of Cambridge, Cambridge CB2 3EQ, UK

³Department of Applied Mathematics and Theoretical Physics, University of Cambridge, Cambridge CB3 0WA, UK

(Received 19 February 2024; revised 22 July 2024; accepted 23 August 2024)

The injection of CO₂ into depleted reservoirs carries the potential for significant Joule–Thomson cooling, when dense, supercritical CO₂ is injected into a strongly under-pressured reservoir. The resulting low temperatures around the wellbore risk causing thermal fracturing of the well/near-well region or causing freezing of pore waters or formation of gas hydrates which would reduce injectivity and jeopardise well and reservoir integrity. These risks are particularly acute during injection start-up when CO₂ is in the gas stability field. In this paper we present a model of non-isothermal single-phase flow in the near-wellbore region. We show that during radial injection, with fixed mass injection rate, transient Joule–Thomson cooling can be described by similarity solutions at early times. The positions of the CO₂ and thermal fronts are described by self-similar scaling relations. We show that, in contrast to steady-state flow, transient flow causes slight heating of CO₂ and reservoir gas either side of the thermal front, as pressure diffuses into the reservoir. The scaling analysis here identifies the parametric dependence of Joule–Thomson cooling. We present a sensitivity analysis which demonstrates that the primary controls on the degree of cooling are reservoir permeability, reservoir thickness, injection rate and Joule–Thomson coefficient. The analysis presented provides a computationally efficient approach for assessing the degree of Joule–Thomson cooling expected during injection start-up, providing a complement to complex, fully resolved numerical simulations.

Key words: porous media, coupled diffusion and flow, geophysical and geological flows

1. Introduction

Carbon capture and storage is an important mitigation method to offset CO₂ emissions, including those from hard-to-abate industries such as steel and cement (Bickle 2009;

† Email address for correspondence: lt335@cam.ac.uk

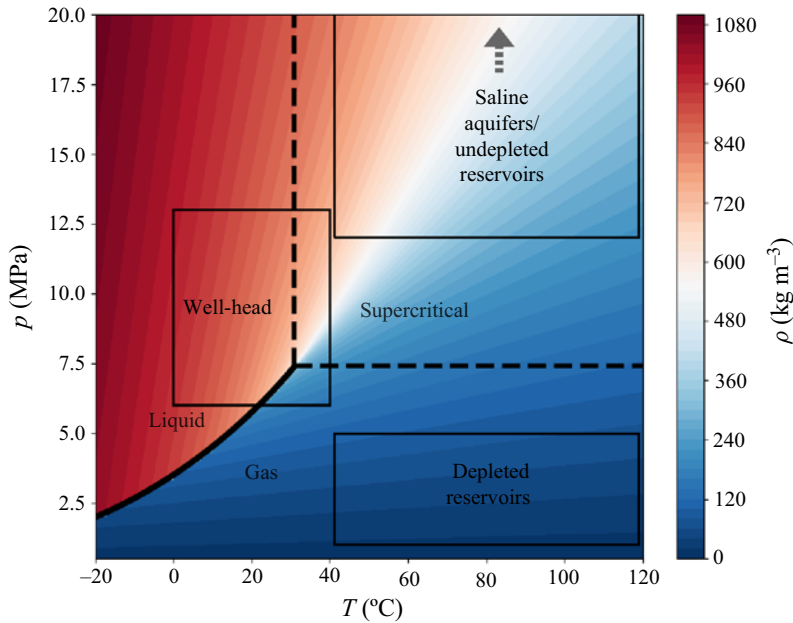


Figure 1. Pressure–temperature, $p - T$, phase diagram for CO_2 showing typical reservoir and well-head conditions. Note that depleted reservoirs fall within the gas stability field of CO_2 . The density contours are constructed using data from the NIST web-book (Linstrom & Mallard 2001, webbook.nist.gov).

Bui *et al.* 2018; Krevor *et al.* 2023). Depleted oil and gas reservoirs within sedimentary basins represent a global potential storage resource of up to 1000 Gt CO_2 (Benson *et al.* 2012). Depleted reservoirs benefit from being proven secure storage sites for buoyant fluids, being well-characterised from previous oil and gas activities and having large pressure margins for safe storage (Barrufet, Bacquet & Falcone 2010; Loizzo *et al.* 2010). Together, these factors reduce storage risks. For many mature petroleum regions, such as the North Sea, depleted reservoirs lie close to major sources of emissions (Ramírez *et al.* 2010; Bentham *et al.* 2014). The possibility to reuse existing well infrastructure and to take advantage of smaller injection-pressure requirements also promise to reduce the costs of CO_2 storage. Despite these benefits, injection into highly depleted reservoirs is yet to be demonstrated at a large scale, with all commercial-scale carbon storage projects currently utilising deep saline aquifers.

Depleted reservoirs with limited connectivity with surrounding aquifers are characterised by below-hydrostatic pressure as a result of past fossil fuel production. Typical oil and gas reservoirs within sedimentary basins occur at depth ranges of 700–4500 m (Gluyas & Hichens 2003; Hannis *et al.* 2017), but can have abandonment pressures as low as 0.35–0.8 MPa (MacRoberts 1962). Unlike deep saline aquifers, which occur at similar depth ranges, depleted oil and gas reservoirs fall within the gas stability field of CO_2 , as shown in figure 1.

While pressure depletion increases the pressure margin for safe storage (Barrufet *et al.* 2010), injection of compressed high-pressure CO_2 can cause severe cooling of the near-wellbore region, which leads to a number of technical challenges. This phenomenon is referred to as the Joule–Thomson effect, and describes the adiabatic cooling (or heating depending on the sign of the Joule–Thomson coefficient) due to expansion and depressurisation of a fluid as it flows through a pressure gradient. Although this effect

is localised, there is concern that the cooling and associated thermal stresses during initial injection could cause thermal fracturing (Vilarrasa, Rinaldi & Rutqvist 2017) and/or freezing of pore waters (Fan, Xu & Wu 2020) and the formation of gas hydrates (Sun & Duan 2005; Oldenburg 2007; Hoteit, Fahs & Soltanian 2019). Together these processes threaten to reduce injectivity in the near-wellbore region (Almenningen *et al.* 2019) and may jeopardise near-wellbore stability and well integrity (Paluszny *et al.* 2020). Current methods to mitigate Joule–Thomson cooling involve heating of CO₂ and subsequent injection in the gas phase using multiple injectors. This method will be applied for the Porthos project in the North Sea (Neele *et al.* 2019, www.porthosco2.nl), but is both expensive and emissions intensive. Injection of cold, dense liquid CO₂ would considerably improve the operational viability of future projects. Understanding the risks of Joule–Thomson cooling, and developing new mitigation approaches, is therefore crucial for facilitating cold CO₂ injection into depleted reservoirs and to enable safe, large-scale storage in depleted reservoirs.

There is particular concern about cooling during the start of injection, when the reservoir pressure is at its lowest point. On injection, the pressure will behave transiently, with a pressure wave propagating from the wellbore into the reservoir (Dake 1983; Bear 2012). The pressure differential between the wellbore and far-field reservoir will increase until the pressure wave reaches the outer boundary of the reservoir, at which point the pressure will build up at a relatively constant rate throughout the reservoir such that the pressure field can be characterised by a pseudo-steady-state solution (Dake 1983; Bear 2012). In deep saline aquifers, the compressibility of the pore fluids is low. This results in a pressure wave that migrates quickly into the reservoir, such that the steady-state regime is established rapidly – within a month for a reservoir of radius 2 km – relative to the time scale of injection (Zhou *et al.* 2008; Mathias *et al.* 2011*b*). In depleted aquifers, the low-pressure reservoir gas is significantly more compressible. We therefore expect the pressure wave to propagate more slowly into the reservoir, leading to a prolonged transient phase – between 5 and 10 times longer than for an equivalent-sized reservoir – during which the differential pressure between the wellbore and far-field reservoir increases. As the maximum degree of cooling scales with this pressure differential, reservoir temperatures continue to decrease until the pressure wave reaches the outer boundary. To constrain the maximum degree of cooling, it is therefore important to understand the early transient behaviour of the system.

Joule–Thomson cooling has been modelled in a number of numerical studies (Oldenburg 2007; André, Azaroual & Menjot 2010; Singh, Goerke & Kolditz 2011; Han *et al.* 2012; Singh *et al.* 2012; Mathias, McElwaine & Gluyas 2014; Ziabakhsh-Ganji & Kooi 2014; Creusen 2018). Oldenburg (2007) showed that, for a large pressure differential of 5 MPa between injection well and reservoir, Joule–Thomson cooling could cause the temperature to drop by up to 20 °C, but he concluded that the cooling was unlikely to lead to freezing or formation of gas hydrates. However, with the exception of Creusen (2018) and Mathias *et al.* (2014), these studies have focused on low injection rates of 3–6 kg s⁻¹, and initial reservoir pressures >5 MPa. While these conditions are relevant to CO₂ sequestration with enhanced gas recovery (Oldenburg, Stevens & Benson 2004), they are not relevant to prospective sequestration in ultra-depleted reservoirs which have very low reservoir pressures of 0.5–4 MPa and, for economic feasibility, require high injection rates in the range 1–4 Mt yr⁻¹ (equivalent to 30–125 kg s⁻¹) (Neele *et al.* 2019).

Analytical or semi-analytical solutions to the flow, depressurisation and cooling of CO₂ are useful tools for understanding the general scaling behaviour of the system and for screening out injection regimes that produce prohibitively large Joule–Thomson cooling. Mathias *et al.* (2010) developed an analytical reference solution for Joule–Thomson

cooling under the assumption of constant fluid properties and a steady-state pressure field. Their solutions give analytic expressions for the position of the thermal front and the degree of cooling, and qualitatively agree with numerical models. However, the assumption of steady-state pressure and fixed density are not consistent with the transient response of the system that is expected during injection start-up and shut-in, when the pressure field changes dynamically and the rate of pressure change varies with distance and time. Developing a simplified framework for understanding the initial transient response that occurs within the first month to year of injection will therefore prove useful.

In this paper we show that, under certain conditions, the transient Joule–Thomson effect in the near-wellbore region can be described by similarity solutions which give the pressure and temperature fields as a function of time and radial distance from the well. We begin in §§ 2 and 3 by outlining the conservation equations for mass and energy of non-isothermal single-phase flow during injection of CO₂ into a methane (CH₄)-filled reservoir. This leads to governing equations for the pressure and temperature field around the well in addition to equations for the positions of the CO₂ and thermal fronts. We solve these governing equations for the case of a radially spreading injection within a cylindrical reservoir in § 4. Following Mathias *et al.* (2010), analytical reference solutions for steady-state flow are derived along with an analytical reference solution for a diffusive pressure field. We then show that the transient pressure and temperature fields away from the well can be described by similarity solutions, with the front positions described by self-similar scaling relations. In § 5 we present numerical solutions for the spreading CO₂ with comparison with the steady-state solutions in addition to an analysis of the parametric controls. Finally we discuss the results in § 6, and finish with some concluding remarks in § 7.

2. Model description

We consider the injection of CO₂ into a reservoir comprising a homogeneous, isotropic and incompressible rock matrix. The pore space is initially filled with CH₄ and an immobile residual water fraction. The CO₂ is then injected from the wellbore and flows into the reservoir, displacing the ambient CH₄. The CO₂ and CH₄ are miscible, however, for simplicity we neglect dispersive mixing within the gas phase (Hughes *et al.* 2012) and assume a sharp front between CO₂-rich and CH₄-rich gas regions. Dissolution of CO₂ and CH₄ and water evaporation are also neglected. There is only single-phase gas flow with a constant relative permeability because the water is at irreducible saturation. This is a reasonable assumption because the gas–water contact in depleted gas reservoirs at abandonment is typically far from the well, such that the region around the well has high gas saturation. An example of this is the P18-2 reservoir, where CO₂ injection is planned as part of the Porthos project (Neele *et al.* 2019). Neglecting variable saturation also greatly simplifies the model, permitting a focus on the interplay between pressure and temperature diffusion away from the wellbore.

Buoyancy and capillary forces are neglected in order to focus more narrowly on depressurisation around the wellbore, such that the flow is assumed to be driven by injection pressure only (Benham, Neufeld & Woods 2022). This assumption is reasonable in a CH₄-filled reservoir as viscous forces can be shown to dominate over buoyancy forces in the near-wellbore region at low pressure (Nordbotten & Celia 2006). Vapour-phase CO₂ is slightly denser than CH₄ (Linstrom & Mallard 2001) leading to slight density under-ride. Modelling by Mathias *et al.* (2014), which accounted for the difference in fluid properties and gravitational forces, demonstrated that the front is semi-vertical on the scale of the reservoir. Furthermore, despite work showing a small dependence of relative permeability

on fluid composition (Ren *et al.* 2000), here, we assume that the relative permeabilities of CO₂ and CH₄ are equal. The density of CO₂ and CH₄ are dependent on pressure and temperature. We assume all fluid properties of CO₂ and CH₄ are equivalent and equal to those of CO₂. Note that this is equivalent to CO₂ injection into a CO₂-filled reservoir.

The compressibility and expansivity of residual water and rock have been shown to have negligible effect on the pressure and temperature fields (Singh *et al.* 2011, 2012). We therefore neglect these effects and assume the volume fractions of water and rock remain constant. Note that rocks in real sedimentary reservoirs are, to some extent, compressible. The following analysis could readily be extended to incorporate matrix compressibility, but it is neglected here for simplicity of presentation. The rock and all fluid components are assumed to be in local thermodynamic equilibrium. Here, we focus on the thermal effects caused by Joule–Thomson cooling. We therefore do not consider the thermal effects of water vaporisation or CO₂ dissolution – this assumption does not significantly change the behaviour of the system. Models from Creusen (2018) show that while water vaporisation produces around 2 °C of additional cooling, CO₂ dissolution has negligible thermal effect in the near-wellbore region. Neglecting partial miscibility of CO₂ and water means that we also do not model the formation of a dry-out zone or salt precipitation around the wellbore. While these are expected to slightly modify the pressure field, these effects are beyond the scope of this work. We refer to other studies that have focused on these effects (Zeidouni, Pooladi-Darvish & Keith 2009; Mathias *et al.* 2011*a*; Hosseini, Mathias & Javadpour 2012).

A schematic of the injection is shown in figure 2. While the near-well fluid flow is often approximately radial, injection into a channel may lead to linear flow. For simplicity, we will initially use rectilinear coordinates. The injection well is at x_w , and the injected CO₂ front occurs at $x_C(t)$. Injection of a cold fluid into a warm porous reservoir leads to the development of a thermal front at $x_T(t)$, across which the temperature of the fluid adjusts to that of the formation (Jupp & Woods 2003; Rayward-Smith & Woods 2011). Due to local thermal equilibrium between the fluid and the immobile solid matrix, the transient thermal front always travels slower than the injected CO₂ front. This thermal inertia is due to the significant heat capacity of the solid grains within the reservoir, which heat up the fluid as it advects through the pore space. Joule–Thomson cooling is superimposed on top of the advected temperature field, with heat conduction having the effect of smearing out the thermal front, as shown in figure 2. The minimum temperature $T_{min} = T_w - \Delta T_{JT}$, is therefore a function of both Joule–Thomson cooling and the bottom-hole temperature T_w , where ΔT_{JT} is the maximum Joule–Thomson cooling, which occurs just before the thermal front.

3. Governing equations

Given the assumptions described above, conservation of mass, Darcy’s law (conservation of momentum) and conservation of energy may be expressed as

$$\phi_f \frac{\partial \rho_f}{\partial t} + \nabla \cdot (\rho_f \mathbf{u}) = 0, \tag{3.1}$$

$$\mathbf{u} = -\frac{kk_r}{\mu} \nabla p, \tag{3.2}$$

$$\rho_f \left(\phi_f \frac{\partial U_f}{\partial t} + \mathbf{u} \cdot \nabla U_f \right) + \phi_w \rho_w \frac{\partial U_w}{\partial t} + \phi_s \rho_s \frac{\partial U_s}{\partial t} = \nabla \cdot (k_T \nabla T) - \nabla \cdot (p \mathbf{I} \cdot \mathbf{u}), \tag{3.3}$$

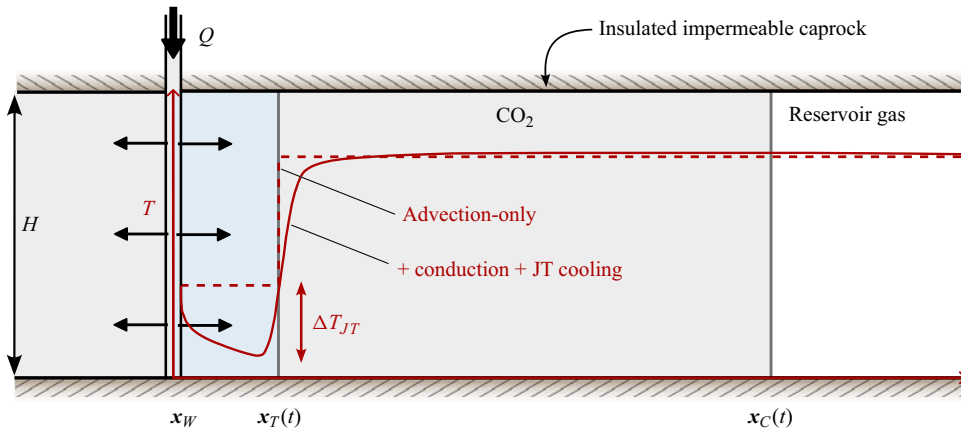


Figure 2. Schematic diagram showing injection of CO₂ into a low-pressure, gas-filled reservoir. Here, x_W , x_T and x_C denote the edge of the wellbore, the positions of the thermal front and CO₂ front, respectively. Schematic temperature fields are shown in red subject to: (i) fluid advection only (dashed), (ii) fluid advection, heat conduction and Joule–Thomson cooling (solid). Here ΔT_{JT} denotes the maximum Joule–Thomson cooling.

where the pressure, p , and temperature, T , are functions of position, x , and time, t . The CO₂–CH₄ fluid phase (which we will refer to as the ‘fluid’), water and solid rock are denoted by subscripts f , w and s respectively. The volume fractions of each phase ϕ_i fully occupy the space, $\sum_i \phi_i = 1$. The phase densities are ρ_i , μ is the fluid viscosity, \mathbf{u} is the Darcy velocity, k and k_r are the reservoir permeability and relative permeability of the fluid respectively, U_i are the specific internal energies and k_T is the effective thermal conductivity of the bulk medium. While this could include both thermal conductivity and thermal dispersivity, the effect of mechanical dispersion on heat transport is thought to be negligible within the Darcian range (Bear 2013). The final term in (3.3) describes the work done by the fluid due to expansion and viscous dissipation.

To close the conservation equations we use the definition of internal energy for the fluid, water and rock, which relates changes in internal energy to changes in temperature, pressure and density:

$$dU_f = c_{pf} (dT + \mu_{JT} dp) - \frac{1}{\rho_f} dp + \frac{p}{\rho_f^2} d\rho_f, \tag{3.4}$$

$$dU_w = c_{pw} dT, \tag{3.5}$$

$$dU_s = c_{ps} dT, \tag{3.6}$$

where c_{pi} are the isobaric heat capacities of the different phases, $\mu_{JT} = \partial T / \partial P|_H = (\alpha_f T - 1) / \rho_f c_{pf}$ is the Joule–Thomson coefficient of the fluid, which describes the change in temperature when a real gas flows from high pressure to low pressure at constant enthalpy and α_f is defined below. The sign of μ_{JT} for CO₂ and CH₄ within the $p - T$ range of interest are always positive, meaning that expansion produces cooling. It is important to note that Joule–Thomson cooling is an inherently irreversible process and arises from work done due to both fluid expansion and pressure changes as the fluid flows from regions of high to low pressure.

To write the governing equations in terms of p and T , we also need an equation of state for the fluid phase, which specifies $\rho_f = \rho_f(p, T)$. In its most general form this can be

expressed as

$$\rho_f(p, T) = \rho_r \exp \left[\int_{p_r}^p \beta_f dp - \int_{T_r}^T \alpha_f dT \right], \quad (3.7)$$

where ρ_r is the density at the reference pressure, p_r , and temperature, T_r . The isothermal compressibility and isobaric thermal expansivity are defined as

$$\beta_f = \frac{1}{\rho_f} \frac{\partial \rho_f}{\partial p}, \quad \alpha_f = -\frac{1}{\rho_f} \frac{\partial \rho_f}{\partial T}, \quad (3.8a,b)$$

respectively, where in general β_f and α_f may be arbitrary functions of p and T . Substituting these definitions and Darcy’s law into (3.1) and (3.3) and expanding the derivatives allows us to rewrite the conservation equations as a set of coupled nonlinear hyperbolic–parabolic partial differential equations for p and T :

$$\beta_f \frac{\partial p}{\partial t} - \alpha_f \frac{\partial T}{\partial t} = \frac{kk_r}{\phi_f \mu} \left[\nabla p \cdot (\beta_f \nabla p - \alpha_f \nabla T) + \nabla^2 p \right], \quad (3.9)$$

$$\overline{\rho c_p} \frac{\partial T}{\partial t} - \phi_f \alpha_f T \frac{\partial p}{\partial t} = \rho_f c_{pf} \frac{kk_r}{\mu} \nabla p \cdot (\nabla T - \mu_{JT} \nabla p) + k_T \nabla^2 T, \quad (3.10)$$

where $\overline{\rho c_p} = \phi_f \rho_f c_{pf} + \phi_w \rho_w c_{pw} + \phi_s \rho_s c_{ps}$ is the average bulk volumetric heat capacity. Here, we have assumed for simplicity that kk_r , μ and k_T do not vary significantly within the reservoir. The different sources of heat on the right-hand side of (3.10) are heat advection from fluid flow, Joule–Thomson cooling due to flow through a pressure gradient and heat conduction. The second term on the left-hand side of (3.10) describes the work done due to expansion/compression in response to transient pressure changes. In contrast to the Joule–Thomson effect, this is a function of the properties of the bulk medium rather than those of the fluid alone.

For CO₂ in the gaseous state, compressibility β_f varies by a factor of ~ 5 between 1 and 5 MPa at 40 °C while thermal expansivity α_f varies by a factor of ~ 2 (Linstrom & Mallard 2001). The $p - T$ dependence of compressibility and expansivity, and to a lesser extent viscosity, therefore introduce an additional nonlinearity into the equations. Even for an isothermal system, this precludes direct analytic solution of the pressure field. A number of authors (e.g. Tartakovsky 2000; Mukhopadhyay, Yang & Yeh 2012; Mathias *et al.* 2014) have used the pseudo-pressure concept of Al-Hussainy, Ramey & Crawford (1966) which relies on tabulated values of integrated fluid properties. For simplicity of the following analysis, in the following section we assume that β_f and α_f are constant over the relevant $p - T$ range, such that density is described by

$$\rho_f(p, T) = \rho_r \exp \left[\beta_f (p - p_r) - \alpha_f (T - T_r) \right]. \quad (3.11)$$

A similar analysis as presented here could be carried out in which β_f and α_f are allowed to be $p - T$ -dependent. While this would yield more rigorous prediction of the $p - T$ trajectories, it does not substantially alter the presented results.

3.1. Pressure and temperature diffusivity

Equations (3.9) and (3.10) for p and T appear as advection–diffusion equations with coupled source terms. The pressure equation, (3.9), is predominantly diffusive, with a

pressure diffusivity given by

$$D_p = \frac{kk_r}{\phi\mu\beta_f}, \tag{3.12}$$

such that the higher the permeability and the lower the porosity, viscosity and compressibility, the faster pressure diffuses into the reservoir. The length scale of pressure decay is time-dependent, and is given by

$$L_p = \left(\frac{kk_r t}{\phi\mu\beta_f} \right)^{1/2}. \tag{3.13}$$

Thermal diffusivity is given by

$$D_T = \frac{k_T}{\rho c_p}, \tag{3.14}$$

leading to a thermal diffusion length scale

$$L_T = \left(\frac{k_T t}{\rho c_p} \right)^{1/2}. \tag{3.15}$$

Thermal diffusion is small in contrast to the pressure diffusion, $D_T \ll D_p$, and hence temperature is advection dominated, meaning that the system admits sharp temperature fronts. As heat advection is controlled by the pressure gradient, we expect the advection length scale of the temperature field to be set by the pressure diffusion length scale L_p . For representative parameter values, we find that

$$\frac{L_p^2}{L_T^2} = \frac{D_p}{D_T} = \frac{kk_r \overline{\rho c_p}}{\phi\mu\beta_f k_T} = O(10^3 - 10^6) \gg 1. \tag{3.16}$$

Thermal diffusivity therefore has the effect of regularising the local structure of the thermal front, but does not control the long range structure of the temperature field.

3.2. Front positions

The injected CO₂ and resident CH₄ have so far been modelled as a combined fluid phase with the same properties. Neglecting dispersion and mixing, the concentration of injected CO₂ in this fluid phase c may be described by

$$\frac{\partial c}{\partial t} + \frac{\mathbf{u}}{\phi_f} \cdot \nabla c = 0, \tag{3.17}$$

where the concentration of CH₄ is given by $1 - c$. The injected CO₂ extends to the front at $\mathbf{x}_C(t)$ and therefore propagates at the local fluid velocity which is given by Darcy's law:

$$\frac{\partial \mathbf{x}_C}{\partial t} = \frac{\mathbf{u}}{\phi_f} = - \frac{kk_r}{\phi_f \mu} \nabla p \Big|_{\mathbf{x}_C}. \tag{3.18}$$

This expression could equivalently be derived by equating the mass flux through the well to the change in injected CO₂ mass within the reservoir

$$\frac{d}{dt} \int_{\mathbf{x}_W, t}^{\mathbf{x}_C, t} \rho_f dr = - \frac{kk_r}{\phi_f \mu} \rho_f \nabla p \Big|_{\mathbf{x}_W}, \tag{3.19}$$

where \mathbf{x}_W is the position of the well. Applying the chain rule and substituting conservation of mass, this leads to expression (3.18).

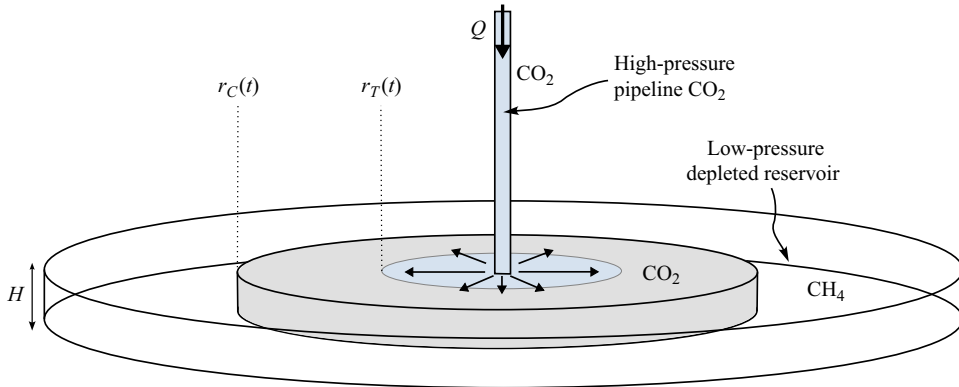


Figure 3. Schematic diagram of a radial CO₂ injection into a cylindrical CH₄-filled reservoir with thickness H . The CO₂ and thermal front are denoted r_C and r_T , respectively.

Neglecting thermal diffusion results in a jump discontinuity in the temperature field at the thermal front created during cold CO₂ injection. The position of the thermal front $x_T(t)$ can be derived by restricting the temperature equation, (3.10), to the purely advective component

$$\frac{\partial T}{\partial t} + \Gamma \frac{\mathbf{u}}{\phi_f} \cdot \nabla T = 0, \quad (3.20)$$

where $\Gamma = \phi_f \rho_f c_{pf} / \overline{\rho c_p}$ is the fractional volumetric heat capacity of the fluid. The speed at which the thermal front $x_T(t)$ propagates is therefore given by the fluid velocity scaled by Γ , such that

$$\frac{\partial x_T}{\partial t} = \Gamma \frac{\mathbf{u}}{\phi_f} = - \Gamma \frac{kk_r}{\phi_f \mu} \nabla p \Big|_{x_T}. \quad (3.21)$$

4. Application to radial flow in a confined reservoir

We apply this model to the injection geometry illustrated in figure 3, which considers a radially spreading injection within a confined reservoir of thickness H . As we are considering the initial transient response before the pressure wave reaches the outer boundaries of the reservoir, the reservoir is modelled as infinite. The injection well, of radius r_w , penetrates the full thickness of the formation. The radial positions of the CO₂ and thermal fronts are $r_C(t)$ and $r_T(t)$ respectively. The governing equations in terms of the radial distance r are then given by

$$\beta_f \frac{\partial p}{\partial t} - \alpha_f \frac{\partial T}{\partial t} = \frac{kk_r}{\phi_f \mu} \left[\frac{\partial p}{\partial r} \left(\beta_f \frac{\partial p}{\partial r} - \alpha_f \frac{\partial T}{\partial r} \right) + \frac{1}{r} \frac{\partial}{\partial r} \left(r \frac{\partial p}{\partial r} \right) \right], \quad (4.1)$$

$$\overline{\rho c_p} \frac{\partial T}{\partial t} - \phi_f \alpha_f T \frac{\partial p}{\partial t} = \rho_f c_{pf} \frac{kk_r}{\mu} \frac{\partial p}{\partial r} \left(\frac{\partial T}{\partial r} - \mu_{JT} \frac{\partial p}{\partial r} \right) + \frac{k_T}{r} \frac{\partial}{\partial r} \left(r \frac{\partial T}{\partial r} \right). \quad (4.2)$$

A constant mass flux inner boundary condition can be defined at the wellbore r_w , along with a fixed bottom-hole temperature T_w . Here we define the problem on an infinite domain, such that the outer boundary maintains the initial reservoir pressure and

temperature (p_0, T_0) as $r \rightarrow \infty$. The boundary and initial conditions are then

$$\frac{\partial p}{\partial r}(r_w, t) = -\frac{\mu Q}{2\pi r_w H k k_r \rho_f}, \quad T(r_w, t) = T_w, \quad (4.3a,b)$$

$$p(\infty, t) = p_0, \quad T(\infty, t) = T_0, \quad (4.4a,b)$$

where Q is the mass injection rate through the well (kg s^{-1}). Note that this represents an idealised injection scenario. During actual injections, the bottom-hole CO_2 conditions depend on CO_2 properties at the well head and on the dynamics of flow within the well. These are likely to vary over time leading to time-dependent boundary conditions.

4.1. Analytical reference solutions

4.1.1. Pressure diffusion

Given low fluid compressibility and small pressure gradients, ρ_f can be assumed constant and (3.9) can be linearised by neglecting the first and second terms on the right-hand side. Assuming temperature changes are negligible, this leads to the classical pressure diffusion equation (Dake 1983; Bear 2012)

$$\frac{\partial p}{\partial t} = \frac{k k_r}{\phi_f \mu \beta_f} \frac{1}{r} \frac{\partial}{\partial r} \left(r \frac{\partial p}{\partial r} \right). \quad (4.5)$$

Note that in scenarios in which pressure gradients are very high, such as near the wellbore in radially spreading injections, or for fluids with high β_f , this linearisation is not appropriate. Comparison of the approximate pressure solution to (4.5) with the fully coupled equations will allow us to explore the effect of the nonlinear terms. Because the temperature and pressure fields vary over a length scale $L_p \propto t^{1/2}$, it is instructive to seek a similarity solution (Barenblatt & Isaakovich 1996) using the similarity variable

$$\eta(r, t) = r (4D_p t)^{-1/2} = r \left(\frac{4k k_r t}{\phi \mu \beta_f} \right)^{-1/2}. \quad (4.6)$$

Use of η transforms (4.5) into an ordinary differential equation for the structure of the pressure field:

$$p'' + \left(2\eta + \frac{1}{\eta} \right) p' = 0, \quad (4.7)$$

where the primes denote derivatives with respect to η . Integrating and applying the constant mass flux inner boundary condition gives

$$p' = -\frac{\mu Q}{2\pi H k k_r \rho_f \eta} \exp(\eta_w^2 - \eta^2), \quad (4.8)$$

where η_w is the value of η at the wellbore. As the well has a finite and fixed radius, r_w ,

$$\eta_w(t) = r_w \left(\frac{4k k_r t}{\phi \mu \beta_f} \right)^{-1/2}, \quad (4.9)$$

and hence $\eta_w \rightarrow 0$ as $t \rightarrow \infty$. Because we have assumed that β_f is small and ρ_f is relatively constant within the reservoir, we can integrate (4.8) again and apply the far-field

outer boundary condition (4.3a,b) to give the similarity solution

$$p = p_0 - \frac{\mu Q}{4\pi H k k_r \rho_f} e^{\eta_w^2} Ei(-\eta^2), \quad (4.10)$$

where ρ_f is the average fluid density and $E_i(y)$ is the exponential integral. We assume a self-similar CO₂ front position, given by

$$r_C(t) = \eta_C \left(\frac{4 k k_r t}{\phi \mu \beta_f} \right)^{1/2}, \quad (4.11)$$

where η_C is a numerical constant to be determined. The position of the front can be found by substituting this expression for $r_C(t)$ and (4.8) into the expression for the front position (3.18), which gives

$$\eta_C = \left(\frac{\mu \beta_f Q}{4\pi H k k_r \rho_f} \exp(\eta_w^2 - \eta_C^2) \right)^{1/2}. \quad (4.12)$$

4.1.2. Steady-state Joule–Thomson cooling

Mathias *et al.* (2010) presented an analytical solution for Joule–Thomson cooling, which can be derived if the pressure field is assumed to be in steady state and uncoupled to the temperature field. A truly steady-state pressure field requires mass flux through the outer boundaries to equal that at the injection well. This is a non-physical condition for a cylindrical reservoir with an impermeable caprock, in which the radial symmetry is preserved. However, a pseudo-steady-state condition can be established in a closed reservoir when the pressure wave reaches the outer impermeable boundaries of the reservoir. In this regime $\partial p/\partial t$ is approximately constant and small over the whole reservoir such that $\partial p/\partial r$ at a given radius does not vary substantially with time (Dake 1983; Bear 2012). The pressure field near the well in the pseudo-steady-state regime can therefore be approximated by

$$\frac{\partial}{\partial r} \left(r \frac{\partial p}{\partial r} \right) \simeq 0, \quad (4.13)$$

which on imposition of the constant mass flux inner boundary condition gives

$$\frac{\partial p}{\partial r} = - \frac{\mu Q}{2\pi H k k_r \rho_f r}, \quad (4.14)$$

where ρ_f is the average fluid density. Note that, for small r , this steady-state pressure gradient is the same as the linearised pressure diffusion solution above. If at a given time the wellbore pressure is known to be $p_w(t)$ and the reservoir properties can be assumed to be constant, integrating again gives the pressure field as described by Thiem’s equation:

$$p = p_w(t) - \frac{\mu Q}{2\pi H k k_r \rho_f} \ln \left(\frac{r}{r_w} \right), \quad (4.15)$$

which is recovered from (4.10) as $r \rightarrow 0$. The radial position of the CO₂ front, r_C , is found by substituting (4.14) into (3.18) and integrating with respect to time, giving

$$r_C = \left(\frac{Q t}{\pi H \phi \rho_f} + r_w^2 \right)^{1/2} \simeq \left(\frac{Q t}{\pi H \phi \rho_f} \right)^{1/2}. \quad (4.16)$$

The temperature field is calculated by coupling this pressure field to a transient temperature equation. Assuming $\partial p/\partial t$ is small and neglecting heat conduction,

substituting (4.14) into (4.2) gives

$$\frac{\partial T}{\partial t} = -\frac{c_{pf}Q}{\rho c_p 2\pi H r} \left(\frac{\partial T}{\partial r} + \frac{\mu_{JT}\mu Q}{2\pi H k k_r \rho_f r} \right). \quad (4.17)$$

Mathias *et al.* (2010) solved the temperature equation by applying a Laplace transform. An alternative derivation using intermediate asymptotics is shown in Appendix A, which gives the following solution:

$$T(r, t) = \begin{cases} T_w - \frac{\mu_{JT}\mu Q}{2\pi H \rho_f k k_r} \ln\left(\frac{r}{r_w}\right), & r < r_T, \\ T_0 + \frac{\mu_{JT}\mu Q}{4\pi H \rho_f k k_r} \ln\left(1 - \frac{c_{pf}Qt}{\rho c_p \pi H r^2}\right), & r > r_T, \end{cases} \quad (4.18)$$

where r_T is the radial position of the thermal front, which is given by

$$r_T = \left[\frac{c_{pf}Qt}{\rho c_p \pi H} + r_w^2 \exp\left(\frac{4\pi H k k_r \rho_f (T_w - T_0)}{\mu_{JT}\mu Q}\right) \right]^{1/2}. \quad (4.19)$$

When $T_w = T_0$, as reported by Mathias *et al.* (2010), the front condition is

$$r_T \approx \left[\frac{c_{pf}Qt}{\rho c_p \pi H} + r_w^2 \right]^{1/2}, \quad (4.20)$$

which could equivalently have been derived by substituting the pressure gradient (4.14) into the condition for the thermal front (3.21). Because $T_w < T_0$ in most injection scenarios, at long times the front condition is better approximated by

$$r_T \approx \left(\frac{c_{pf}Qt}{\rho c_p \pi H} \right)^{1/2} = \Gamma^{1/2} r_C, \quad (4.21)$$

where $\Gamma = \phi_f \rho_f c_{pf} / \overline{\rho c_p}$ is the fractional volumetric heat capacity. Unlike for the transient pressure field solution above, in which the $t^{1/2}$ dependence arises from the diffusive length scale of the problem, the $t^{1/2}$ dependence of the front positions in the steady-state case arises geometrically due to radial spreading. The maximum degree of Joule–Thomson cooling ΔT_{JT} occurs at the thermal front and is given by

$$\Delta T_{JT} = T_w - T(r_T) = \frac{\mu_{JT}\mu Q}{2\pi H \rho_f k k_r} \ln\left(\frac{r_T}{r_w}\right) = \mu_{JT}(p_w - p(r_T)). \quad (4.22)$$

In the steady-state case, Joule–Thomson cooling is therefore simply given by μ_{JT} multiplied by the pressure drop between the well and thermal front. As the thermal front propagates into the reservoir at a distance $\sim t^{1/2}$ through a static logarithmic pressure field, the degree of cooling increases logarithmically with time.

4.2. Transient Joule–Thomson cooling

Given these reference solutions, we now examine the fully coupled model for transient Joule–Thomson cooling. This allows us to quantify the effect of the nonlinear terms and temperature coupling on the pressure field, and the effect of pressure transience on Joule–Thomson cooling.

The consideration of pressure transience requires the solution of the full governing equations, (4.1) and (4.2). A scaling analysis of these equations suggests self-similar solutions in terms of non-dimensional variables for pressure, temperature, radial extent and well radius:

$$\begin{aligned} \mathcal{P} &= \beta_f (p - p_0), \quad \mathcal{T} = \alpha_f (T - T_0), \\ \eta &= r \left(\frac{4kk_r t}{\phi\mu\beta_f} \right)^{-1/2}, \quad \eta_W = r_W \left(\frac{4kk_r t}{\phi\mu\beta_f} \right)^{-1/2}, \end{aligned} \quad (4.23a-d)$$

where η is the similarity variable, and η_W is a time-dependent variable introduced through the fixed wellbore radius. The initial reservoir pressure and temperature are p_0 and T_0 , respectively, and β_f and α_f are assumed constant. Substituting the above relations into (4.1) and (4.2) we obtain

$$\frac{\eta_W}{\eta} \left(\frac{\partial \mathcal{P}}{\partial \eta_W} - \frac{\partial \mathcal{T}}{\partial \eta_W} \right) + \frac{\partial \mathcal{P}}{\partial \eta} - \frac{\partial \mathcal{T}}{\partial \eta} = -\frac{1}{2\eta} \left[\frac{\partial \mathcal{P}}{\partial \eta} \left(\frac{\partial \mathcal{P}}{\partial \eta} - \frac{\partial \mathcal{T}}{\partial \eta} \right) + \frac{1}{\eta} \frac{\partial}{\partial \eta} \left(\eta \frac{\partial \mathcal{P}}{\partial \eta} \right) \right], \quad (4.24)$$

$$\begin{aligned} &\frac{\eta_W}{\eta} \left(\frac{\partial \mathcal{T}}{\partial \eta_W} - \mathcal{A} \frac{\partial \mathcal{P}}{\partial \eta_W} \right) + \frac{\partial \mathcal{T}}{\partial \eta} - \mathcal{A} \frac{\partial \mathcal{P}}{\partial \eta} \\ &= -\frac{1}{2\eta} \left[\Gamma \frac{\partial \mathcal{P}}{\partial \eta} \left(\frac{\partial \mathcal{T}}{\partial \eta} - \mathcal{J} \frac{\partial \mathcal{P}}{\partial \eta} \right) + \frac{1}{Pe} \frac{1}{\eta} \frac{\partial}{\partial \eta} \left(\eta \frac{\partial \mathcal{T}}{\partial \eta} \right) \right]. \end{aligned} \quad (4.25)$$

Equivalent equations for a fluid with variable β_f and α_f are given in Appendix B. The solutions to these equations are self-similar in the far field, but have a slow time dependence in the near-wellbore region due to the requirement to match onto the fixed wellbore radius. The general solutions are therefore $\mathcal{P}(\eta, \eta_W)$ and $\mathcal{T}(\eta, \eta_W)$. The governing equations are subject to the scaled boundary conditions

$$\mathcal{P}(\infty) = 0, \quad \mathcal{T}(\infty) = 0, \quad \frac{\partial \mathcal{P}}{\partial \eta}(\eta_W) = -\frac{\chi}{\eta_W}, \quad \mathcal{T}(\eta_W) = \mathcal{T}_W. \quad (4.26a-d)$$

The non-dimensional parameters

$$\left. \begin{aligned} \Gamma &= \frac{\phi\rho_f c_{pf}}{\rho c_p}, \quad \mathcal{J} = \frac{\alpha_f \mu_{JT}}{\beta_f} = \frac{\left(\frac{\partial T}{\partial p} \Big|_H \right)_f}{\left(\frac{\partial T}{\partial p} \Big|_\rho \right)_f}, \quad \mathcal{A} = \frac{\phi\alpha_f^2 T}{\beta_f \bar{\rho} c_p} = \frac{\left(\frac{\partial T}{\partial p} \Big|_S \right)_{f+w+s}}{\left(\frac{\partial T}{\partial p} \Big|_\rho \right)_f}, \\ Pe &= \frac{\bar{\rho} c_p k k_r}{k_T \phi \mu \beta_f} \end{aligned} \right\} \quad (4.27a-d)$$

depend on fluid and reservoir properties. As defined above, Γ is the volumetric heat capacity ratio of the fluid to the bulk porous medium, \mathcal{J} is the scaled Joule–Thomson coefficient of the fluid which controls the magnitude of Joule–Thomson cooling due to flow of the fluid down a pressure gradient, \mathcal{A} is the scaled isentropic temperature gradient of the bulk medium which controls the temperature response to transient pressure changes

and Pe is the thermal Péclet number. The non-dimensional parameters

$$\chi = \frac{\mu\beta_f Q}{2\pi H k_r \rho_f}, \quad T_W = \alpha_f (T_w - T_0), \quad (4.28a,b)$$

depend on the boundary conditions at the wellbore.

Note that, as above for the linearised pressure solution, when the domain is rescaled in terms of η , the finite well radius causes the position of the inner boundary to be time-dependent, $\eta_W = \eta_W(t)$, with $\eta_W \rightarrow 0$ as $t \rightarrow \infty$. The finite well radius therefore introduces an additional time dependence close to the well. Due to the fixed wellbore temperature, we can make the observation that

$$\frac{\partial T}{\partial \eta_W} \simeq - \left. \frac{\partial T}{\partial \eta} \right|_{\eta \rightarrow \eta_W}, \quad \text{as } \eta_W \rightarrow 0. \quad (4.29)$$

As observed for the reference solution, the fixed mass injection rate causes the pressure at the wellbore to buildup at a rate inversely proportional to η_W , such that the long time solution provides the envelope of the earlier time solutions. In other words, in the absence of temperature coupling, the pressure field is fully self-similar. This means that

$$\frac{\partial \mathcal{P}}{\partial \eta_W} \simeq 0, \quad \text{as } \eta_W \rightarrow 0. \quad (4.30)$$

Substituting the above approximations into (4.24) and (4.25) gives

$$\mathcal{P}' - \left(1 - \frac{\eta_W}{\eta}\right) T' = -\frac{1}{2\eta} \left[\mathcal{P}' (\mathcal{P}' - T') + \frac{1}{\eta} (\eta \mathcal{P}')' \right], \quad (4.31)$$

$$\left(1 - \frac{\eta_W}{\eta}\right) T' - \mathcal{A} \mathcal{P}' = -\frac{1}{2\eta} \left[\Gamma \mathcal{P}' (T' - \mathcal{J} \mathcal{P}') + \frac{1}{Pe} \frac{1}{\eta} (\eta T')' \right], \quad (4.32)$$

where the primes now denote derivatives with respect to η .

To isolate the effect of temperature coupling on the pressure field, we can additionally consider the solution to the pressure field under isothermal conditions. Employing the same approximations as above, this is described by

$$\mathcal{P}' = \mathcal{P}'^2 + \frac{1}{\eta} (\eta \mathcal{P}'_i)', \quad (4.33)$$

subject to the boundary conditions

$$\mathcal{P}'(\eta_W(t)) = -\frac{\chi}{\eta_W}, \quad \mathcal{P}'(\infty) = 0. \quad (4.34a,b)$$

4.2.1. Front positions

In the limit $\eta \gg \eta_W$ the effect of the finite well radius diminishes such that the solution is completely self-similar with respect to the variable η . Hence, the conditions (3.18) and (3.21) for the front positions $x_C(t)$ and $x_T(t)$ can be rewritten in terms of η to give

$$\eta_C = -\frac{1}{2} \mathcal{P}' \Big|_{\eta_C}, \quad \eta_T = -\frac{\Gamma}{2} \mathcal{P}' \Big|_{\eta_T}, \quad (4.35a,b)$$

where η_C and η_T are the values of η at the CO₂ and thermal fronts, respectively. Rearranging the temperature equation, (4.32), we also identify a stationary point in the

temperature solution which represents a temperature maximum at

$$\eta_M = - \left. \frac{\Gamma \mathcal{J}}{2\mathcal{A}} \mathcal{P}' \right|_{\eta_M}. \quad (4.36)$$

Because the conditions (4.34a,b)–(4.36) are only dependent on \mathcal{P} , given a self-similar pressure field, the fronts will be defined for fixed values of η_C , η_T and η_M . This has the significant benefit that solutions to (4.34a,b) and (4.36) give the positions of the fronts for all time according to

$$r_C = \eta_C \left(\frac{4kk_r t}{\phi \mu \beta_f} \right)^{1/2}, \quad r_T = \eta_T \left(\frac{4kk_r t}{\phi \mu \beta_f} \right)^{1/2}, \quad r_M = \eta_M \left(\frac{4kk_r t}{\phi \mu \beta_f} \right)^{1/2}. \quad (4.37a-c)$$

Furthermore, given a self-similar pressure field, the pressures at the fronts, \mathcal{P}_C , \mathcal{P}_T and \mathcal{P}_M , are constant in time.

4.2.2. Numerical approach

We solve (4.31) and (4.32) numerically in python using the `scipy.integrate.solve_ivp` library, which implements a fourth-order implicit Runge–Kutta method. Due to the time dependence of the inner region, the equations are solved for each time interval of interest, with the inner boundary conditions imposed at $\eta_W(t)$. The far-field boundary is imposed at a finite η that is sufficiently large that pressure and temperature gradients are negligible. Varying the position of the outer boundary can be shown to not influence the final solutions.

5. Results

To illustrate the transient Joule–Thomson cooling effect, solutions are calculated for injection into a 2 MPa reservoir with an ambient temperature of 75 °C. We consider a constant rate CO₂ injection at 30 kg s^{−1} (corresponding to ~1 MtCO₂ yr^{−1}) which is relevant to the high injection rates used at CO₂ sequestration sites such as the Sleipner project (Furre *et al.* 2017). Solutions are calculated for injection temperatures of 25 °C and 75 °C to represent a cold and heated injection, respectively.

The reference reservoir and fluid properties are given in table 1. The fluid thermophysical properties ρ_r , β_f , α_f , c_{pf} and μ are assumed to be constant and are calculated using the CoolProp library (Bell *et al.* 2014) which implements the Span-Wagner equation of state for pure CO₂. We use a reference pressure p_r of 3 MPa and temperature T_r equal to that of the wellbore T_w . Density ρ_f is a function of p and T as given in (3.11). This leads to values of the non-dimensional parameters Γ , \mathcal{A} , Pe and χ which vary as a function of p and T . Reference values for all the non-dimensional parameters at p_r and T_r are given in table 1.

The solutions for the cold injection are plotted as a function of η in figure 4 at time intervals up to 1 year, which is the time at which the pressure field would start to interact with the outer boundary of a reservoir with a radius of 2 km. We find that the pressure diffuses smoothly into the reservoir, while the temperature has a sharp advective front which lags behind the injected CO₂ front due to the thermal inertia of the porous system. Because the fluid density is a function of p and T we see that it decreases into the reservoir due to decreasing p , and exhibits a sharp drop across the thermal front due to the increase in T at the thermal front. The positions of the CO₂ front, the thermal maximum and the thermal front occur at constant values of η for all time. The temperature is self-similar in

Reservoir properties

Initial reservoir pressure	p_0	2 MPa
Initial reservoir temperature	T_0	75 °C
Well radius	r_w	0.1 m
Reservoir thickness	H	50 m
Porosity	ϕ	0.3
Permeability	k	10^{-13} m ²
Relative permeability	k_r	1
Thermal conductivity	k_T	3 W m ⁻¹ K ⁻¹
Rock density	ρ_s	2700 kg m ⁻³
Rock heat capacity	c_{ps}	750 J kg ⁻¹ K ⁻¹
Injection rate	Q	30 kg s ⁻¹
Wellbore (injection) temperature	T_w	(25, 75) °C

CO₂ Thermophysical properties

Reference pressure	p_r	3 MPa
Reference temperature	T_r	(25, 75) °C
Reference fluid density	ρ_r	(64.1, 50.3) kg m ⁻³
Heat capacity	c_{pf}	(1170, 1040) J kg ⁻¹ K ⁻¹
Joule–Thomson coefficient	μ_{JT}	$(11.0, 7.36) \times 10^{-6}$ K Pa ⁻¹
Compressibility	β_f	$(4.12, 3.69) \times 10^{-7}$ Pa ⁻¹
Thermal expansivity	α_f	$(6.14, 3.98) \times 10^{-3}$ K ⁻¹
Viscosity	μ	$(1.55, 1.78) \times 10^{-5}$ Pa s

Reference non-dimensional variables (p_r, T_r)

Volumetric heat capacity ratio	Γ	(0.0157, 0.0110)
Scaled Joule–Thomson coefficient	\mathcal{J}	(0.165, 0.0794)
Scaled isentropic temperature gradient	\mathcal{A}	$(5.68, 3.13) \times 10^{-3}$
Thermal Péclet number	Pe	$(2.51, 2.43) \times 10^4$
Scaled wellbore pressure gradient	χ	(0.0949, 0.125)
Scaled wellbore temperature	\bar{T}_w	(-0.307, 0)

Table 1. Reference reservoir properties, fluid properties and non-dimensional variables.

the far field, but is time-dependent behind the thermal front due to the finite well radius. The maximum amount of cooling increases with time as the pressure drop between the well and thermal front increase. The expanded region shows the small amount of heating ahead of the thermal front due to transient compression of the fluid ahead of the thermal front, with a temperature maximum that lags slightly behind the CO₂ front. In this case the transient heating is of the order of 0.25 °C.

The uncoupled pressure field in addition to the reference analytical solution to the linearised pressure equation are plotted for comparison. the analytical solution assumes a fixed density which we set to the reference density ρ_r . We can evaluate the effect of the nonlinear terms in the pressure equation by comparing the uncoupled p field with the analytical reference solution. The analytical p field decreases logarithmically with η , while the uncoupled pressure field has more curvature, developing a convex-up shape. This is due to compressibility of the CO₂ which causes ρ_f to increase as p builds up around the wellbore. For fixed mass injection rate, higher ρ_f of injected CO₂ causes a reduction in the volumetric injection rate, and therefore a reduction in the pressure gradient at the wellbore over time. The effect of temperature coupling on the pressure field can be evaluated by comparing the uncoupled pressure field with the fully coupled model.

Transient Joule–Thomson cooling during CO₂ injection

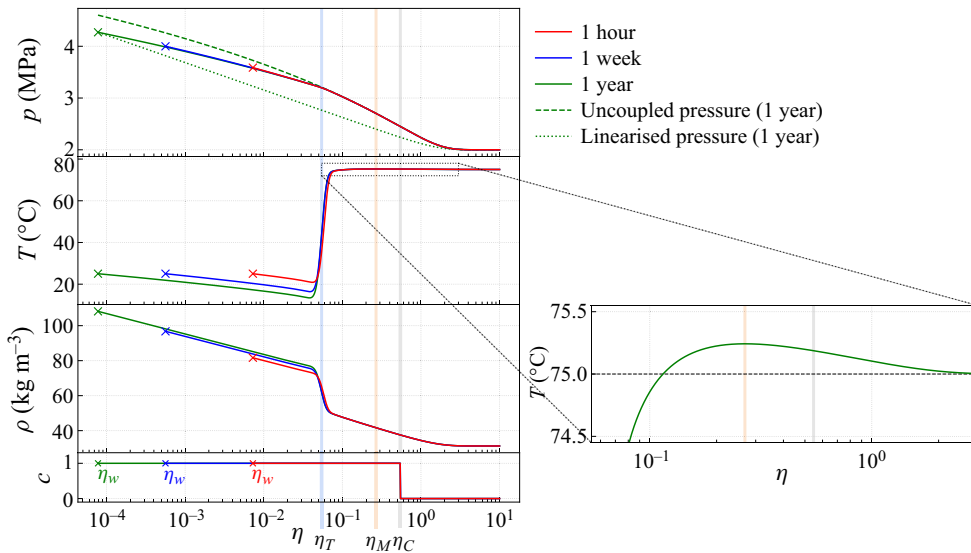


Figure 4. Example transient solutions, calculated using the reference fluid and reservoir properties (see table 1), for pressure, temperature, density and CO₂ fraction in the mobile fluid phase, plotted against the similarity variable η . Solutions are calculated for a cold injection with $T_w = 25^\circ\text{C}$. The dotted and dashed lines in the top plot show the uncoupled and linearised pressure field solutions at 1 year. The positions of $\eta_w(t)$ at the various times are marked by ‘x’. The positions of η_T , η_M , and η_C are marked by the vertical blue, orange and grey lines, respectively.

The far-field pressure solution is the same as the uncoupled pressure solution, but close to the well it deviates from the uncoupled pressure field due to the sudden jump in ρ_f at the thermal front which reduces the near-well pressure gradient in the coupled model. Note that the time dependence of the inner pressure field due to temperature coupling is small.

The solutions for both the cold and hot injection are plotted as a function of r in figure 5. Also shown for comparison are the analytic steady-state solutions. In a transient flow model the fluid density varies both spatially and temporally due to varying p and T leading to an ambiguity in the choice of density to use for the steady-state flow solutions when comparing the two models. Steady-state solutions for three different ρ_f , corresponding to the wellbore densities at the three time intervals, are therefore shown. The choice of density significantly affects the estimate of Joule–Thomson cooling, with the lower and upper bounds of ΔT_{JT} here differing by $\sim 5^\circ\text{C}$. As previously noted by Mathias *et al.* (2014), using the steady-state approximation with the wellbore ρ_f under-predicts both ΔT_{JT} and the CO₂ front position r_C . Despite this, the choice of ρ_f for the steady-state solutions has a negligible effect on the estimated position of the thermal front r_T , and the steady-state models agree with the positions calculated from the transient models. This can be understood from expressions (4.16), (4.20) and (4.22) for the steady-state CO₂ front, thermal front and maximum Joule–Thomson cooling, respectively. The expressions for the CO₂ front and the degree of Joule–Thomson cooling explicitly depend on the ρ_f , whereas the position of the thermal front is dependent on the bulk volumetric heat capacity, $\bar{\rho}c_p$, which is dominated by the heat capacity of the rock, and thus has a weaker dependence on ρ_f .

The transient solutions in figure 5 show a saw-tooth pattern in the near-wellbore temperature field. This is due to the decrease in pressure gradient caused by the decreasing volumetric injection rate over time as ρ_f at the wellbore increases. This results in gradual

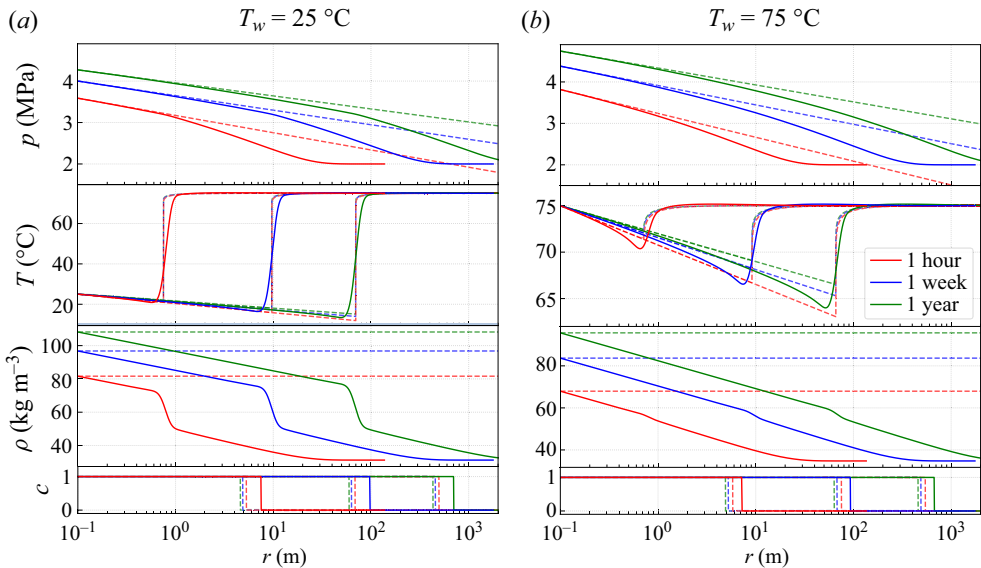


Figure 5. Example transient solutions, calculated using the reference fluid and reservoir properties (see table 1), for pressure, temperature, density and CO₂ fraction in the mobile fluid phase, plotted against the radial distance r . Solutions are calculated for (a) a cold injection at 25 °C, and (b) a hot injection at 75 °C. The steady-state solutions, calculated using the wellbore densities at the three time intervals, are plotted in dashed lines for comparison.

heating in the region behind the thermal front due to pressurisation. Here, we have assumed a constant value of μ_{JT} . Taking the pressure dependence of μ_{JT} into account, the near-wellbore heating would be more significant than modelled here. This is because μ_{JT} decreases with increasing pressure, which would introduce greater curvature to the inner temperature solution. The transient pressure increase additionally causes minor heating ahead of the thermal front as the pressure wave diffuses into the reservoir. The transient heating is not captured in the steady-state models, as density is assumed to be constant.

5.1. Effects of pressure transience

During the early stages of injection, pressure at any point in the reservoir increases over time due to pressure build up and pressure diffusion into the reservoir. To further explore the effects of this pressure transience it is useful to consider the rate of change of pressure, temperature and density in both the solid and fluid frames. The rate of change in the fluid frame is given by the material derivative with respect to the fluid velocity $D/Dt = (\partial/\partial t + \mathbf{u}/\phi \cdot \nabla)$. In figure 6 the rates are plotted as a function of η so that the profiles at different times can be compared.

In the solid frame, pressure increases over time throughout the reservoir as shown in in figure 6(a). The pressurisation rate is highest at the start of injection and decreases logarithmically with time. The rate of temperature change in the solid frame, is plotted in figure 6(b). As noted above, the region behind the thermal front undergoes compressive heating. Rapid cooling occurs at the thermal front as the solid loses heat to the cold injected fluid. Note that while the degree of cooling increases with time, the rate of cooling is highest at the start of the injection. Ahead of the thermal maximum, the CO₂ and reservoir gas again undergo slight compressive heating. The rate of temperature cycling is important when assessing the risks associated with Joule–Thomson cooling

Transient Joule–Thomson cooling during CO₂ injection

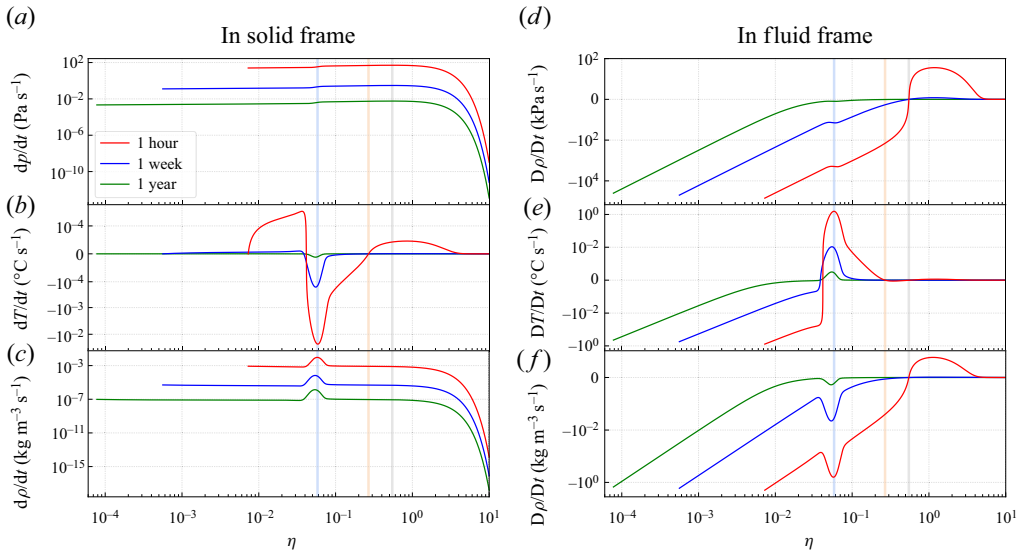


Figure 6. Plots of (a) the rate of pressure buildup in the solid frame $\partial p/\partial t$, (b) the rate of temperature change $\partial T/\partial t$, (c) the rate of fluid density increase $\partial \rho_f/\partial t$, (d) the material derivative of pressure in the fluid frame Dp/Dt , (e) the material derivative of temperature DT/Dt and (f) the material derivative of fluid density $D\rho_f/Dt$. All rates are calculated for a cold injection at 25 °C. The thermal front, temperature maximum and CO₂ front are marked by blue, red and grey vertical lines, respectively.

including permeability reduction and formation of gas hydrates. This is because the kinetics of hydrate formation (Farhang, Nguyen & Hampton 2014) and the time-dependent creep of reservoir rocks (Brzesowsky *et al.* 2014) mean that both of these processes are rate-dependent.

Density responds to changes in both pressure and temperature. In figure 6(c) we see that the pressure effect dominates such that at a given point in the reservoir, the fluid density always increases with time. The effect of temperature can be seen at the thermal front, where $d\rho/dt$ peaks due to the sudden temperature drop as the cold front advects.

Figure 6(d) shows that Dp/Dt is negative in the fluid frame near the wellbore due to the high fluid velocity around the well, but becomes positive in the far field where both the fluid velocity and pressure gradient are lower. The transition from depressurisation to pressurisation in the fluid frame occurs at the CO₂ front. Transient pressure increase does work on the fluid causing isentropic heating. The small heated region around the CO₂ front is thus caused by pressure diffusion into the reservoir where the CO₂ is nearly immobile. Behind the CO₂ front, the fluid is flowing faster than the pressure field is diffusing into the reservoir such that the fluid experiences depressurisation as it flows. This explains why the steady-state approximation can be used close to the wellbore: in this region fluid flow is so fast that the pressure field appears static in the fluid frame. In figure 6(e) we see that the fluid undergoes Joule–Thomson cooling in response to the depressurisation around the wellbore. However, the heat content of the solid rock heats the injected fluid and retards the thermal effect. This is observed as heating of the fluid as it crosses the thermal front. The magnitudes of both Dp/Dt and DT/Dt decrease logarithmically with time.

Figure 6(f) shows the material derivative of the fluid density, which from conservation of mass is equivalent to density multiplied by the divergence of the fluid velocity:

$$\frac{D\rho}{Dt} = \frac{\partial \rho_f}{\partial t} + \frac{\mathbf{u}}{\phi} \cdot \nabla \rho_f = -\frac{\rho_f}{\phi} \nabla \cdot \mathbf{u}. \tag{5.1}$$

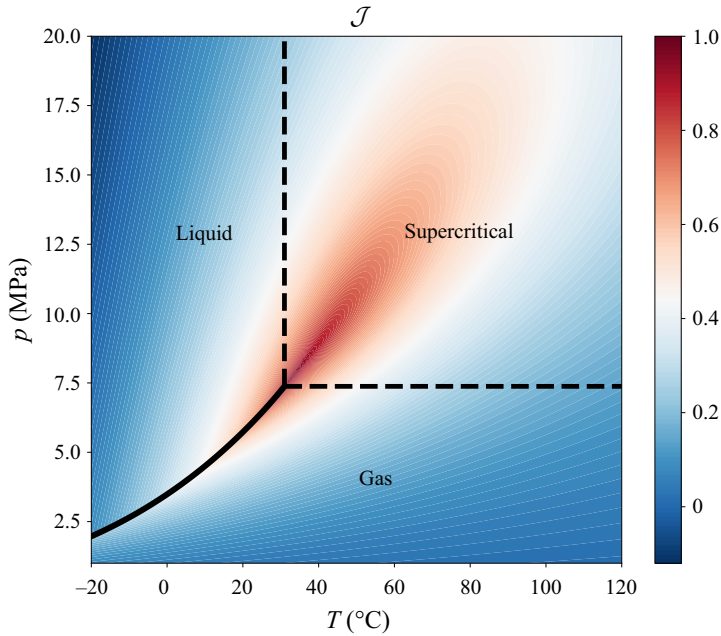


Figure 7. Phase diagram of CO₂ with contours of $\mathcal{J} = \alpha_f \mu_{JT} / \beta_f$ calculated using the CoolProp library (Bell *et al.* 2014) for pure CO₂. At the critical point $(\alpha_f, \beta_f) \rightarrow \infty$ such that $\mathcal{J} = 1$.

Therefore, if $\nabla \cdot \mathbf{u} > 0$, the fluid expands as it flows, while if $\nabla \cdot \mathbf{u} < 0$, the fluid contracts. We see that a transition from expansion to contraction occurs at the CO₂ front and is attributable to the pressurisation ahead of the CO₂ front. Behind the CO₂ front the fluid undergoes expansion, with the expansion rate peaking at the thermal front due to heating of the fluid. Behind the thermal front the fluid also undergoes expansion. Given that

$$\frac{D\rho}{Dt} = \rho_f \left(\beta_f \frac{Dp}{Dt} - \alpha_f \frac{DT}{Dt} \right), \quad (5.2)$$

this is because the effect of pressure decrease outweighs that of temperature decrease due to Joule–Thomson cooling. Applying the steady-state approximation near the wellbore

$$\frac{D\rho}{Dt} \approx \frac{\rho_f \mathbf{u}}{\phi} \left(\beta_f \frac{\partial p}{\partial r} - \alpha_f \mu_{JT} \frac{\partial p}{\partial r} \right), \quad (5.3)$$

we see that, for pressure to dominate the density field near the wellbore, we must have the condition

$$\frac{\alpha_f \mu_{JT}}{\beta_f} = \mathcal{J} < 1. \quad (5.4)$$

Whether or not this is the case depends on the fluid properties. As shown in figure 7, for CO₂ $\mathcal{J} \leq 1$, meaning that CO₂ will always expand when flowing into a low-pressure reservoir. However, expansion would be minimal for injection near the critical point where $(\alpha_f, \beta_f) \rightarrow \infty$.

5.2. Parametric controls

The behaviour of the non-dimensional pressure and temperature fields is controlled by the non-dimensional parameters Γ , \mathcal{J} , \mathcal{A} and Pe in addition to the boundary conditions χ

Transient Joule–Thomson cooling during CO₂ injection

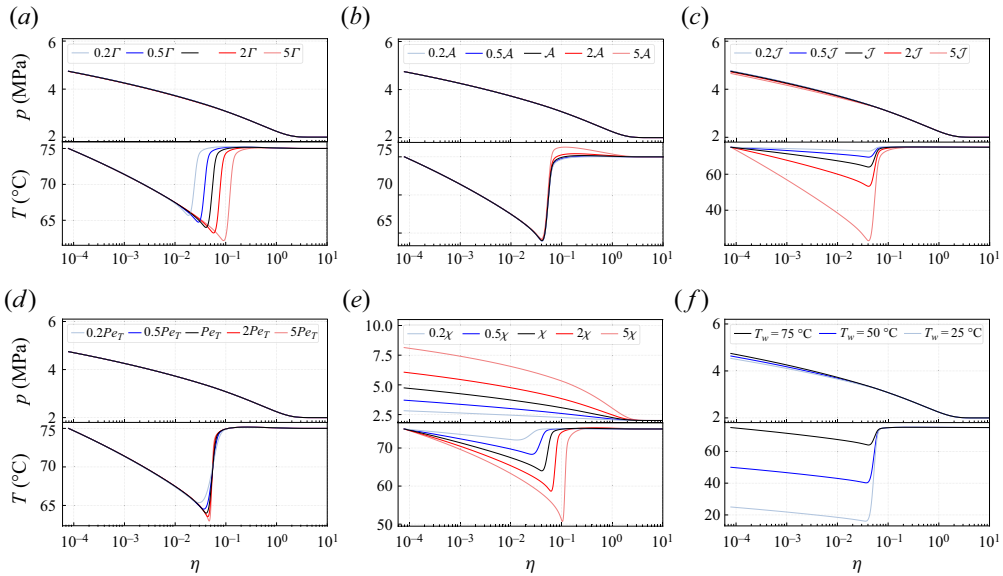


Figure 8. Sensitivity analysis showing parametric controls on pressure and temperature fields of (a) volumetric heat capacity Γ , (b) scaled isentropic temperature gradient \mathcal{A} , (c) scaled Joule–Thomson coefficient \mathcal{J} , (d) Thermal Péclet number Pe , (e) scaled wellbore pressure gradient χ , (f) wellbore temperature T_w . The black lines show the reference case for injection at 75 °C, and the coloured lines are runs with independently varied parameter values. In plots (a–f) only a single parameter is changed at a time.

and T_w . These parameters are functions of the thermodynamic properties of the injected CO₂ and the reservoir properties and injection conditions. The modes of variability can be observed by varying the parameters independently, as shown in [figure 8](#).

Increasing Γ increases the heat capacity of the rock and shifts the position of the thermal front forwards; this slightly increases the degree of cooling. Increasing \mathcal{A} increases the amount of compressive heating ahead of the thermal front, but has negligible effect on the degree of Joule–Thomson cooling. Increasing \mathcal{J} significantly increases the temperature gradient behind the thermal front and increases the maximum amount of Joule–Thomson cooling ΔT_{JT} . Increasing Pe sharpens the thermal front and slightly increases ΔT_{JT} at the front. As shown, these parameters have negligible effect on the pressure field.

The parameter χ which controls the pressure boundary condition is the only one that has an appreciable effect on the pressure field. Increasing χ increases the wellbore pressure gradient and the rate of pressure buildup. This increases the degree of Joule–Thomson cooling and shifts the thermal front forwards. It also increases the curvature of the pressure field, due to an increased dominance of the nonlinear terms in the pressure equation. Note here that the effect of increasing Q has an equivalent effect to increasing the fluid viscosity μ or to decreasing the formation thickness H or the permeability k . Decreasing the temperature boundary condition shifts the temperature field behind the thermal front to lower temperatures. As this increases the density behind the thermal front, it slightly reduces the wellbore pressure gradient.

This parameter variation assumes that each parameter can be varied independently. From an examination of the functional forms of the parameters, which are shown in [figure 8](#), we see that some parameters actually depend on the same reservoir and thermophysical properties. Varying any particular property therefore leads to a combination of the modes of variability shown. For example as porosity ϕ appears in

both Γ and \mathcal{A} , a larger ϕ of the reservoir would shift the thermal front forwards, as well as increasing the amount of compressive heating. The permeability k is also strongly dependent on ϕ . Increasing k would decrease χ and therefore decrease Joule–Thomson cooling and potentially shift the thermal front backwards. Which effect is dominant requires full numerical simulation. The analysis presented here is, however, useful in providing an understanding of the effect the different properties and variables have.

The importance of the different parametric controls in controlling Joule–Thomson cooling depends on the effects shown in [figure 8](#) in addition to the range in values that the parameters are likely to show. Because permeability k and formation thickness H for different reservoirs can vary by up to an order of magnitude, there is scope for χ to vary by up to two orders of magnitude. It is therefore the most important parameter in controlling both the pressure response of the reservoir and the degree of Joule–Thomson cooling. For small, low permeability reservoirs, the injection rate Q can be reduced to limit pressure buildup. Variation in parameters Γ , \mathcal{A} and \mathcal{J} are controlled by the thermophysical properties of the injected CO₂. The p and T dependence of these properties introduces additional nonlinearity into the system. While we have not modelled this here, the appropriate scaling for a system with fully variable thermodynamic properties is given in [Appendix B](#). Contours of the equivalent non-dimensional variables Γ , \mathcal{A} , \mathcal{J} and χ (as defined in [Appendix B](#)) are plotted on the phase diagram of CO₂ in [figure 9](#). Parameters Γ and \mathcal{A} attain high values around the critical point. As pressure and temperature vary away from the reservoir, the near-critical $p - T$ conditions are likely to only exist over a small radial extent. The parameter \mathcal{J} on the other hand varies by up to an order of magnitude between the gas and liquid stability fields due to variation in μ_{JT} . We therefore expect much greater Joule–Thomson cooling for a given pressure gradient when injecting in the gas stability field as is the case when injecting into depleted and ultra-depleted reservoirs. Although the fluid density ρ_f and viscosity μ trade-off against each other, the parameter χ is also slightly higher, for given injection rate and reservoir properties, in the gas stability field than the liquid field. This further contributes to higher degrees of Joule–Thomson cooling for gas injections.

6. Discussion

Joule–Thomson cooling poses significant risks for injection into highly depleted reservoirs. The reduced-order models presented here show cooling of up to 12 °C below that of the wellbore temperature when injecting in the gas stability field. These models are, however, best used as a means of understanding the fundamental physics involved in Joule–Thomson cooling, rather than for developing quantitative operating procedures, for which numerical simulations incorporating the full dependence of thermodynamic properties on reservoir variables can be used. As observed here, the early transient period of injection, in which the pressure wave is propagating into the reservoir, leads to a self-similar pressure field with CO₂ and thermal fronts which can be described parametrically by self-similar scaling relations. At late times, the maximum degree of Joule–Thomson cooling increases approximately $\propto \ln(t^{1/2})$. Therefore, while the cooling rate is most dramatic at the start of injection, the lowest temperatures are predicted to occur at later times. As the greatest degree of cooling occurs immediately behind the thermal front, the cold region expands out as an annulus away from the wellbore as illustrated in [figure 5](#). The risks associated with very low temperatures, including freezing of pore waters, and formation of gas hydrates are therefore expected to occur immediately behind the thermal front. Because the pressure gradient is greatest in the region closest to the wellbore, the risks associated with the clogging of pore-space and the accompanying

Transient Joule–Thomson cooling during CO₂ injection

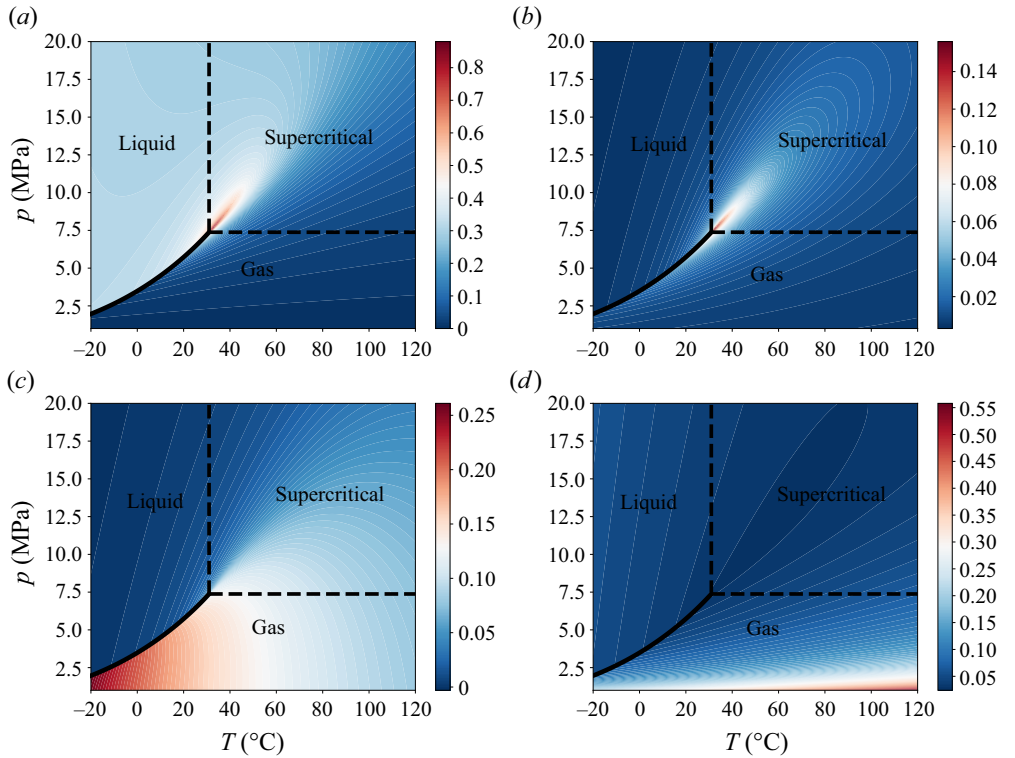


Figure 9. The $p - T$ phase diagram of CO₂ showing the liquid–gas phase transition in the solid black line, and the critical pressure and temperature in the dashed black lines. Contours of (a) Γ , (b) \mathcal{A} , (c) \mathcal{J} and (d) χ calculated using the CoolProp library.

permeability reduction, such as failure of the caprock, are somewhat mitigated by the lowest temperatures occurring at greater radial distances where pressure gradients are lower.

Transient cooling continues until the point when the pressure wave interacts with the boundaries of the reservoir. Due to heterogeneities within geological reservoirs this pressure boundary could correspond to a sealed fault or a region of lower permeability arising from lithological variation. The effect of a closed outer boundary was not simulated here, but it may be anticipated that once the pressure field impinges on the outer boundary, the pressure will build up across the whole reservoir resulting in compressive heating.

The $p - T$ trajectories of the reference models with injection temperatures of 25 °C and 75 °C are plotted in figure 10. The open circles mark the wellbore $p - T$ conditions. Note that the wellbore temperature T_w remains constant due to the fixed temperature boundary condition imposed, while the pressure increases over time due to pressure build-up at the well. The closed circle marks the far-field reservoir conditions, which remain fixed over time. The radial Joule–Thomson cooling paths have a characteristic ‘hooked’ shape. From the wellbore they initially trace a linear path with positive $p - T$ slope. This represents the region behind the thermal front. Neglecting the effect of transient compressive heating, the temperature gradient is approximated by $\partial T / \partial p \approx \mu_{JT}$. The linear slope of this segment therefore arises from the use of a constant value of μ_{JT} . The $p - T$ dependence of μ_{JT} would actually create curvature of these paths. Following this initial linear slope, there is a quasi-isobaric increase in temperature, which corresponds to heating of the CO₂ across

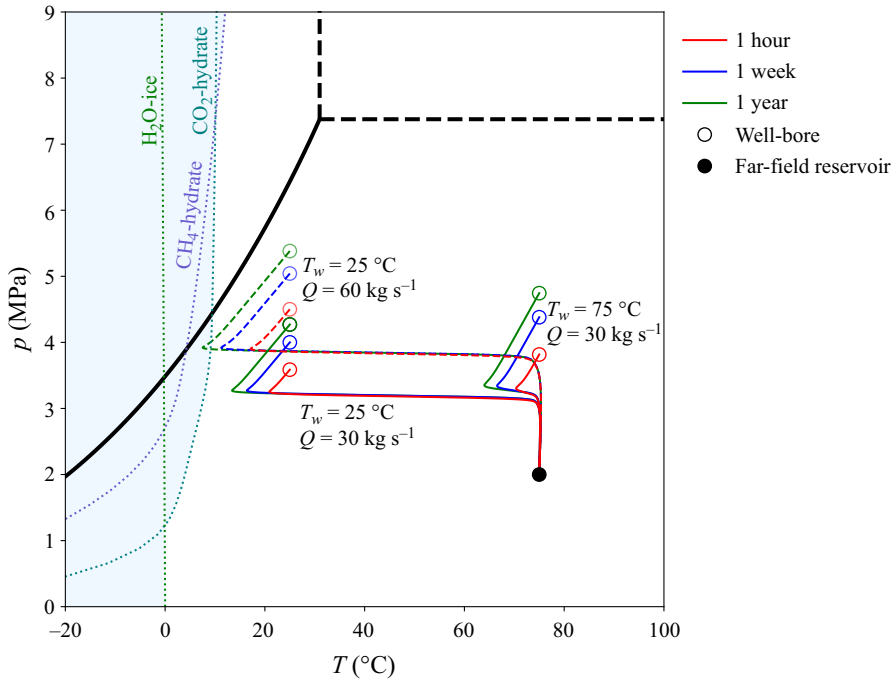


Figure 10. The $p - T$ phase diagram of CO_2 , with the liquid–gas phase transition in solid black line, and the critical pressure and temperature marked in dashed black lines. The phase boundaries for CO_2 and CH_4 -hydrate and pure H_2O ice are marked, with the freezing window shaded in blue. The $p - T$ trajectories for the low- T ($T_w = 25^\circ\text{C}$) and high- T ($T_w = 75^\circ\text{C}$) injections are shown at 3 different times. The dashed lines show a low- T injection with a higher injection rate. The wellbore pressure and temperature are marked by the open circles and the far-field reservoir conditions are marked by the closed circle.

the thermal front. An important result from this work is that at late times, the pressure at the thermal front is approximately constant over time. This is due to the self-similarity of both the pressure field and the thermal front position, as observed in figure 4. Following the rapid temperature increase there is a smooth transition to an approximately isothermal pressure drop until the far-field reservoir pressure is reached. The $p - T$ path actually slightly over-shoots the reservoir temperature due to the compressive heating around the CO_2 front, however, this is hard to discern in the plots shown here.

We have also plotted the stability fields for CO_2 and CH_4 -hydrates using data from Sun & Duan (2005), in addition to the water–ice phase transition for pure water using data from the Engineering Toolbox (www.engineeringtoolbox.com). Gas hydrates are a type of crystalline ice composed of CO_2 or CH_4 molecules enclosed within a solid H_2O lattice. As an example we have plotted the $p - T$ trajectory of a low- T injection in which the injection rate Q is doubled to 60 kg s^{-1} . All other parameters are as given in table 1. In this example, the greater pressure buildup causes the $p - T$ conditions to enter into the hydrate stability field after 1 year of injection, resulting in a partially frozen annulus. Freezing of pore water and formation of gas hydrates causes a reduction in permeability. This has the effect of restricting fluid flow and reducing the pressure diffusivity, which would cause a buildup of pressure behind the low-permeability annular hydrate zone. The extent of permeability reduction caused by hydrate formation would depend on both the pore volume occupied by hydrates (Almenningen *et al.* 2019), and their pore-scale distribution (Kleinberg *et al.* 2003). In the limit of severe permeability reduction, the cooled annular region would act as

a sealed barrier, with the effect of restricting the radial extent of the reservoir. Since CO₂ hydrates are >70 wt% H₂O (Sun & Kang 2016), in practice, the volume fraction of hydrate that can form depends on the availability of water. In dry gas reservoirs, in which gas saturation is high, permeability reduction is unlikely to be significant. Furthermore, CO₂ injection is a drying process which creates a dry-out front around the wellbore. However, because the dry-out front propagates into the reservoir more slowly than the thermal front (Creusen 2018), it can be assumed that there will be some water available for hydrate formation within the low-temperature region. To date there is no literature modelling the dynamic and geomechanical consequences of hydrate formation in depleted reservoirs. Further work targeted at specific case studies is required to understand the potential effects of hydrate formation. Since the effect of hydrate formation on injectivity and reservoir stability is yet to be assessed, a conservative injection strategy is to ensure that pressure and temperature in the near-wellbore region remain outside of the hydrate formation window.

As demonstrated in the sensitivity analysis, the key parameters controlling the degree of cooling are permeability, reservoir size, injection rate and the Joule–Thomson coefficient. As the minimum temperature is given by $T_{min} = T_W - \Delta T_{JT}$, the wellbore temperature T_W is also important. For moderate to low fluid compressibility, the minimum temperature reached can be approximated by the analytical solution for steady-state flow, which gives

$$T_{min} = T_W - \frac{\mu_{JT}\mu Q}{4\pi H\rho_f k k_r} \ln\left(\frac{c_{pf}Qt}{\rho c_p \pi H r_w^2} + 1\right). \quad (6.1)$$

This highlights the parametric controls. Thus, high injection rates, low permeabilities and very low injection temperatures should be avoided. Care should also be taken when injecting CO₂ in the gas stability field.

Figure 10 also shows the CO₂ liquid–gas phase transition. The models presented here for the early transient phase of injection remain within the gas stability field. As noted in § 5.2, the high Joule–Thomson coefficient and low density of CO₂ gas are expected to cause more significant pressure buildup and Joule–Thomson cooling than when injecting liquid CO₂. In all of the models presented here pressure buildup is insufficient to cause $p - T$ conditions to enter the liquid stability field within the first year of injection. However, sustained high mass injection rates are likely to result in a liquid–gas phase transition either within the well, or within the reservoir. In an adiabatic system, we expect the $p - T$ path to be buffered along the phase boundary such that there is a finite region in which liquid and gas coexist. Self-consistent inclusion of the phase transition therefore requires equations for multiphase flow, as well as the thermodynamic effects of the latent heat of vaporisation and volume change of reaction. The relative thermal effects of latent heat of vaporisation and Joule–Thomson cooling are yet to be explored.

In this analysis we have considered injection into a homogeneous reservoir. Sedimentary rocks are highly heterogeneous on both large and small scales, and are often comprised of layers of varying permeability reflecting lithological variation, bedding planes, cross-bedding and variable mineralisation. The influence of spatially correlated heterogeneity on CO₂ plume migration and trapping efficiency has been extensively studied (e.g. Lengler, De Lucia & Kühn 2010; Benham, Bickle & Neufeld 2021) and fluid flow has been shown to be focused within high-permeability layers. One way to apply the models presented here to understand Joule–Thomson cooling within a layered heterogeneous medium is to consider a horizontally layered rock in which the vertical permeability $k_v = 0$, such that flow is only in the horizontal plane. The pressure

diffusivity $D_p = kk_r / \phi \mu \beta_f$ is lower in low-permeability layers, such that the speed of the pressure propagation scales $\sim k^{1/2}$. From the analytical pressure diffusion solution and the sensitivity analysis, we also know that the pressure gradient scales $\sim k^{-1}$. For the same injection rate across all layers, pressure build-up and near-wellbore pressure gradients will be larger in the low permeability layers. This will result in enhanced Joule–Thomson cooling and a greater probability of hydrate formation in low-permeability layers. An interesting repercussion is therefore that Joule–Thomson cooling could reduce permeability in low-permeability layers and further enhance heterogeneity. This would increase flow localisation in high-permeability layers. Note, however, that this neglects vertical fluid flow, sometimes referred to as pressure leakage. In practice vertical thicknesses are small compared with lateral reservoir extent, meaning that pressure could equilibrate quickly across layers. The pressure diffusivity is therefore more likely to be set by the average permeability across all layers.

7. Conclusions

The results here explore the thermal effects of compressible flow during CO₂ injection into depleted gas-filled reservoirs. During the early transient injection phase, when the pressure wave is propagating into the reservoir, before having interacted with the outer boundary, the pressure and temperature fields can be described by similarity solutions. Pressure and temperature propagate radially into the reservoir $\propto t^{1/2}$. The rate of propagation is set by the diffusivity of the pressure field which depends on the fluid compressibility. The CO₂ front and thermal front, which lags behind the CO₂ front, also scale with the pressure diffusion length scale.

Unlike steady-state flow, transient injection causes both heating and cooling. Joule–Thomson cooling occurs due to flow down the pressure gradient, which leads to rapid cooling of the reservoir across the thermal front. Transient pressure increase causes slight warming of the reservoir around the CO₂ front, and behind the thermal front, after the thermal front has passed. The models presented provide a tool for understanding the fundamental physics of Joule–Thomson cooling, and for determining the important parametric controls. Safe injection requires that temperature and pressure remain outside the hydrate stability field. In accordance with previous studies, we find that the crucial parameters controlling the minimum temperatures reached are injection rate, wellbore temperature, reservoir permeability and thickness, Joule–Thomson coefficient and fluid density.

Improved understanding of the $p - T$ behaviour during injection into depleted reservoirs requires inclusion of the liquid–gas phase transition, as well as the full $p - T$ dependence of the thermodynamic properties. Future work should focus on these effects.

Funding. This work was supported by the Department for Net Zero and Energy Security as part of the RETURN project (grant number G117196) through the Accelerating CCS Technologies (ACT) programme.

Declaration of interests. The authors report no conflict of interest.

Data availability. The data that support the findings of this study are available within the article.

Author ORCIDs.

 Lucy E.L. Tweed <https://orcid.org/0009-0009-4506-2110>;

 Michael J. Bickle <https://orcid.org/0000-0001-8889-3410>;

 Jerome A. Neufeld <https://orcid.org/0000-0002-3284-5169>.

Appendix A

For a steady-state radial injection, the temperature field is described by (4.17). Close to the well, radial distance and temperature can be scaled as follows:

$$\lambda = \frac{r}{r_W}, \quad \mathcal{T} = \frac{2\pi H k k_r \rho_f (T - T_0)}{\mu_{JT} \mu Q}, \quad \mathcal{T}_W = \frac{2\pi H k k_r \rho_f (T_W - T_0)}{\mu_{JT} \mu Q}. \quad (\text{A1a-c})$$

Substituting these variables into (4.17) leads to

$$\frac{\overline{\rho c_p} 2\pi H r_W^2}{c_{pf} Q} \frac{\partial \mathcal{T}}{\partial t} = \frac{1}{\lambda} \left(\frac{\partial \mathcal{T}}{\partial \lambda} + \frac{1}{\lambda} \right). \quad (\text{A2})$$

In the limit $r_W \rightarrow 0$, the temperature field close to the well is approximated by

$$\frac{\partial \mathcal{T}}{\partial \lambda} = -\frac{1}{\lambda}. \quad (\text{A3})$$

Integrating and applying the constant wellbore temperature boundary condition gives

$$\mathcal{T} = \mathcal{T}_W - \ln(\lambda), \quad (\text{A4})$$

which can be expressed dimensionally as

$$T = T_W - \frac{\mu_{JT} \mu Q}{2\pi H k k_r \rho_f} \ln \left(\frac{r}{r_W} \right). \quad (\text{A5})$$

Far from the well, we expect the solution to be self-similar with respect to the similarity variable ζ , defined as

$$\zeta = \frac{\overline{\rho c_p} 2\pi H r^2}{c_{pf} Q t}. \quad (\text{A6})$$

Substituting this into (4.17) leads to

$$\frac{\partial \mathcal{T}}{\partial \zeta} = \frac{1}{\zeta(\zeta - 2)}. \quad (\text{A7})$$

Integrating and applying the far-field boundary condition gives

$$\mathcal{T} = \frac{1}{2} \ln \left(\frac{\zeta - 2}{\zeta} \right), \quad (\text{A8})$$

which can be expressed dimensionally as

$$T = T_0 + \frac{\mu_{JT} \mu Q}{4\pi H k k_r \rho_f} \ln \left(1 - \frac{c_{pf} Q t}{\overline{\rho c_p} \pi H r^2} \right). \quad (\text{A9})$$

Solutions (A5) and (A9) can be matched across the thermal front, such that the position of the thermal front, r_T , is given by equating (A5) and (A9), which leads to

$$r_T = \left[\frac{c_{pf} Q t}{\overline{\rho c_p} \pi H} + r_W^2 \exp \left(\frac{4\pi H k k_r \rho_f (T_w - T_0)}{\mu_{JT} \mu Q} \right) \right]^{1/2}. \quad (\text{A10})$$

Appendix B

For fluids with variable compressibility β_f and expansivity α_f we may use the following scalings:

$$\mathcal{P} = \beta_r (p - p_0), \quad \mathcal{T} = \alpha_r (T - T_0),$$

$$\eta = r \left(\frac{4kk_r t}{\phi \mu \beta_r} \right)^{-1/2}, \quad \eta_w = r_w \left(\frac{4kk_r t}{\phi \mu \beta_r} \right)^{-1/2}, \quad (\text{B1a-d})$$

where β_r and α_r are the reference compressibility and expansivity, respectively. Substituting the above relations into (4.1) and (4.2) and assuming the solutions are in steady state with respect to η we obtain

$$\tilde{\beta}_f \mathcal{P}' - \left(1 - \frac{\eta_w}{\eta} \right) \tilde{\alpha}_f \mathcal{T}' = -\frac{1}{2\eta} \left[\mathcal{P}' \left(\tilde{\beta}_f \mathcal{P}' - \tilde{\alpha}_f \mathcal{T}' \right) + \frac{1}{\eta} \left(\eta \mathcal{P}' \right)' \right], \quad (\text{B2})$$

$$\left(1 - \frac{\eta_w}{\eta} \right) \mathcal{T}' - \mathcal{A} \mathcal{P}' = -\frac{1}{2\eta} \left[\Gamma \mathcal{P}' \left(\mathcal{T}' - \mathcal{J} \mathcal{P}' \right) + \frac{1}{Pe} \frac{1}{\eta} \left(\eta \mathcal{T}' \right)' \right], \quad (\text{B3})$$

subject to the boundary conditions, as given in (4.26a-d). The non-dimensional parameters for fluids with variable β_f and α_f are then

$$\left. \begin{aligned} \Gamma &= \frac{\phi \rho_f c_{pf}}{\rho c_p}, \quad \mathcal{J} = \frac{\alpha_r \mu_{JT}}{\beta_r}, \quad \mathcal{A} = \frac{\phi \alpha_r \alpha_f T}{\beta_r \rho c_p}, \quad Pe = \frac{kk_r \bar{\rho} c_p}{k_T \phi \mu \beta_f}, \\ \tilde{\beta}_f &= \frac{\beta_f}{\beta_r}, \quad \tilde{\alpha}_f = \frac{\alpha_f}{\alpha_r}, \quad \chi = \frac{\mu \beta_r Q}{2\pi H k k_r \rho_f}, \quad T_w = \alpha_r (T_w - T_0), \end{aligned} \right\} \quad (\text{B4a-h})$$

where the additional parameters $\tilde{\beta}_f$ and $\tilde{\alpha}_f$ describe the $p - T$ variation of β_f and α_f .

REFERENCES

- AL-HUSSAINY, R., RAMEY, H.J. JR. & CRAWFORD, P.B. 1966 The flow of real gases through porous media. *J. Petrol. Technol.* **18**, 624–636.
- ALMENNINGEN, S., GAUTEPLASS, J., HAUGE, L.P., BARTH, T., FERNØ, M.A. & ERSLAND, G. 2019 Measurements of CH₄ and CO₂ relative permeability in hydrate-bearing sandstone. *J. Petrol. Sci. Engng* **177**, 880–888.
- ANDRÉ, L., AZAROUAL, M. & MENJOZ, A. 2010 Numerical simulations of the thermal impact of supercritical CO₂ injection on chemical reactivity in a carbonate saline reservoir. *Transp. Porous Med.* **82** (1), 247–274.
- BARENBLATT, G.I. & ISAAKOVICH, B.G. 1996 *Scaling, Self-Similarity, and Intermediate Asymptotics: Dimensional Analysis and Intermediate Asymptotics. No. 14*. Cambridge University Press.
- BARRUFET, M.A., BACQUET, A. & FALCONE, G. 2010 Analysis of the storage capacity for CO₂ sequestration of a depleted gas condensate reservoir and a saline aquifer. *J. Can. Petrol. Technol.* **49**, 23–31.
- BEAR, J. 2012 *Hydraulics of Groundwater*. Courier Corporation.
- BEAR, J. 2013 *Dynamics of Fluids in Porous Media*. Courier Corporation.
- BELL, I.H., WRONSKI, J., QUOILIN, S. & LEMORT, V. 2014 Pure and pseudo-pure fluid thermophysical property evaluation and the open-source thermophysical property library coolprop. *Ind. Engng Chem. Res.* **53** (6), 2498–2508.
- BENHAM, G.P., BICKLE, M.J. & NEUFELD, J.A. 2021 Two-phase gravity currents in layered porous media. *J. Fluid Mech.* **922**, A7.
- BENHAM, G.P., NEUFELD, J.A. & WOODS, A.W. 2022 Axisymmetric gravity currents in anisotropic porous media. *J. Fluid Mech.* **952**, A23.
- BENSON, S.M., *et al.* 2012 Carbon capture and storage. In *Global Energy Assessment: Toward Sustainable Future*, pp. 993–1068. Cambridge University Press.

- BENTHAM, M., MALLOWS, T., LOWNDES, J. & GREEN, A. 2014 CO₂ storage evaluation database (CO₂ stored), the UK's online storage atlas. *Energy Procedia* **63**, 5103–5113.
- BICKLE, M.J. 2009 Geological carbon storage. *Nat. Geosci.* **2** (12), 815–818.
- BRZESOWSKY, R.H., HANGX, S.J.T., BRANTUT, N. & SPIERS, C.J. 2014 Compaction creep of sands due to time-dependent grain failure: effects of chemical environment, applied stress, and grain size. *J. Geophys. Res.* **119**, 7521–7541.
- BUI, M., *et al.* 2018 Carbon capture and storage (CCS): the way forward. *Energy Environ. Sci.* **11**, 1062–1176.
- CREUSEN, M. 2018 Near wellbore effects induced by CO₂ injection and the influence on injectivity in depleted gas reservoirs. Master's thesis, TU Delft.
- DAKE, L.P. 1983 *Fundamentals of Reservoir Engineering*. Elsevier.
- FAN, L., XU, C. & WU, Z. 2020 Effects of cyclic freezing and thawing on the mechanical behavior of dried and saturated sandstone. *Bull. Engng Geol. Environ.* **79**, 755–765.
- FARHANG, F., NGUYEN, A.V. & HAMPTON, M.A. 2014 Influence of sodium halides on the kinetics of CO₂ hydrate formation. *Energy Fuels* **28**, 1220–1229.
- FURRE, A.K., EIKEN, O., ALNES, H., VEVATNE, J.N. & KIÆR, A.F. 2017 20 years of monitoring CO₂-injection at Sleipner. *Energy Procedia* **114**, 3916–3926.
- GLUYAS, J.G. & HICHENS, H.M. 2003 *United Kingdom Oil and Gas Fields, Commemorative Millennium Volume*. Geological Society of London.
- HAN, W.S., KIM, K.Y., PARK, E., MCPHERSON, B.J., LEE, S.Y. & PARK, M.H. 2012 Modeling of spatiotemporal thermal response to CO₂ injection in saline formations: interpretation for monitoring. *Transp. Porous Med.* **93**, 381–399.
- HANNIS, S., LU, J., CHADWICK, A., HOVORKA, S., KIRK, K., ROMANAK, K. & PEARCE, J. 2017 CO₂ storage in depleted or depleting oil and gas fields: what can we learn from existing projects? *Energy Procedia* **114**, 5680–5690.
- HOSSEINI, S.A., MATHIAS, S.A. & JAVADPOUR, F. 2012 Analytical model for CO₂ injection into brine aquifers-containing residual CH₄. *Transp. Porous Med.* **94**, 795–815.
- HOTEIT, H., FAHS, M. & SOLTANIAN, M.R. 2019 Assessment of CO₂ injectivity during sequestration in depleted gas reservoirs. *Geosciences* **9**, 199.
- HUGHES, T.J., HONARI, A., GRAHAM, B.F., CHAUHAN, A.S., JOHNS, M.L. & MAY, E.F. 2012 CO₂ sequestration for enhanced gas recovery: new measurements of supercritical CO₂–CH₄ dispersion in porous media and a review of recent research. *Intl J. Greenh. Gas Control* **9**, 457–468.
- JUPP, T.E. & WOODS, A.W. 2003 Thermally driven reaction fronts in porous media. *J. Fluid Mech.* **484**, 329–346.
- KLEINBERG, R.L., FLAUM, C., GRIFFIN, D.D., BREWER, P.G., MALBY, G.E., PELTZER, E.T., YESINOWSKI, J.P. & GRIFFIN, D. 2003 Deep sea NMR: methane hydrate growth habit in porous media and its relationship to hydraulic permeability, deposit accumulation, and submarine slope stability. *J. Geophys. Res.* **108** (B10), 2508.
- KREVOG, S., DE CONINCK, H., GASDA, S.E., GHALEIGH, N.S., DE GOOYERT, V., HAJIBEYGI, H., JUANES, R., NEUFELD, J.A., ROBERTS, J.J. & SWENNENHUIS, F. 2023 Subsurface carbon dioxide and hydrogen storage for a sustainable energy future. *Nat. Rev. Earth Environ.* **4** (2), 102–118.
- LENGLER, U., DE LUCIA, M. & KÜHN, M. 2010 The impact of heterogeneity on the distribution of CO₂: numerical simulation of CO₂ storage at Ketzin. *Intl J. Greenh. Gas Control* **4**, 1016–1025.
- LINSTROM, P.J. & MALLARD, W.G. 2001 The NIST chemistry webbook: a chemical data resource on the internet. *J. Chem. Engng Data* **46**, 1059–1063.
- LOIZZO, M., LECAMPION, B., BÉRARD, T., HARICHANDRAN, A. & JAMMES, L. 2010 Reusing O&G-depleted reservoirs for CO₂ storage: pros and cons. *SPE Projects Facilities Construction* **5**, 166–172.
- MACROBERTS, D.T. 1962 Abandonment pressure of gas wells. In *Society of Petroleum Engineers – Petroleum Economics and Valuation Symposium, Dallas, Texas*, pp. 56–59. SPE.
- MATHIAS, S.A., GLUYAS, J.G., GONZÁLEZ MARTÍNEZ DE MIGUEL, G.J. & HOSSEINI, S.A. 2011a Role of partial miscibility on pressure buildup due to constant rate injection of CO₂ into closed and open brine aquifers. *Water Resour. Res.* **47** (12), W12525.
- MATHIAS, S.A., GLUYAS, J.G., OLDENBURG, C.M. & TSANG, C.F. 2010 Analytical solution for Joule–Thomson cooling during CO₂ geo-sequestration in depleted oil and gas reservoirs. *Intl J. Greenh. Gas Control* **4**, 806–810.
- MATHIAS, S.A., MCELWAIN, J.N. & GLUYAS, J.G. 2014 Heat transport and pressure buildup during carbon dioxide injection into depleted gas reservoirs. *J. Fluid Mech.* **756**, 89–109.
- MATHIAS, S.A., GONZÁLEZ MARTÍNEZ DE MIGUEL, G.J., THATCHER, K.E. & ZIMMERMAN, R.W. 2011b Pressure buildup during CO₂ injection into a closed brine aquifer. *Transp. Porous Med.* **89** (3), 383–397.

- MUKHOPADHYAY, S., YANG, S.Y. & YEH, H.D. 2012 Pressure buildup during supercritical carbon dioxide injection from a partially penetrating borehole into gas reservoirs. *Transp. Porous Med.* **91**, 889–911.
- NEELE, F., *et al.* 2019 CO₂ storage feasibility in the P18-2 depleted gas field. *Tech. Rep.* 11635. TNO.
- NORDBOTTEN, J.M. & CELIA, M.A. 2006 Similarity solutions for fluid injection into confined aquifers. *J. Fluid Mech.* **561**, 307–327.
- OLDENBURG, C.M. 2007 Joule–Thomson cooling due to CO₂ injection into natural gas reservoirs. *Energy Convers. Manage.* **48**, 1808–1815.
- OLDENBURG, C.M., STEVENS, S.H. & BENSON, S.M. 2004 Economic feasibility of carbon sequestration with enhanced gas recovery (CSEGR). *Energy* **29**, 1413–1422.
- PALUSZNY, A., GRAHAM, C.C., DANIELS, K.A., TSAPARLI, V., XENIAS, D., SALIMZADEH, S., WHITMARSH, L., HARRINGTON, J.F. & ZIMMERMAN, R.W. 2020 Caprock integrity and public perception studies of carbon storage in depleted hydrocarbon reservoirs. *Intl J. Greenh. Gas Control* **98**, 103057.
- RAMÍREZ, A., HAGEDOORN, S., KRAMERS, L., WILDENBORG, T. & HENDRIKS, C. 2010 Screening CO₂ storage options in the Netherlands. *Intl J. Greenh. Gas Control* **4**, 367–380.
- RAYWARD-SMITH, W.J. & WOODS, A.W. 2011 Some implications of cold CO₂ injection into deep saline aquifers. *Geophys. Res. Lett.* **38**, L06407.
- REN, Q.Y., CHEN, G.J., YAN, W. & GUO, T.M. 2000 Interfacial tension of (CO₂ + CH₄) + water from 298 K to 373 K and pressures up to 30 MPa. *J. Chem. Engng Data* **45**, 610–612.
- SINGH, A.K., BAUMANN, G., HENNINGES, J., GÖRKE, U.J. & KOLDITZ, O. 2012 Numerical analysis of thermal effects during carbon dioxide injection with enhanced gas recovery: a theoretical case study for the Altmark gas field. *Environ. Earth Sci.* **67**, 497–509.
- SINGH, A.K., GOERKE, U.J. & KOLDITZ, O. 2011 Numerical simulation of non-isothermal compositional gas flow: application to carbon dioxide injection into gas reservoirs. *Energy* **36**, 3446–3458.
- SUN, Q. & KANG, Y.T. 2016 Review on CO₂ hydrate formation/dissociation and its cold energy application. *Renew. Sust. Energy Rev.* **62**, 478–494.
- SUN, R. & DUAN, Z. 2005 Prediction of CH₄ and CO₂ hydrate phase equilibrium and cage occupancy from ab initio intermolecular potentials. *Geochim. Cosmochim. Acta* **69**, 4411–4424.
- TARTAKOVSKY, D.M. 2000 Real gas flow through heterogeneous porous media: theoretical aspects of upscaling. *Stoch. Environ. Res. Risk Assess.* **14**, 109–122.
- VILARRASA, V., RINALDI, A.P. & RUTQVIST, J. 2017 Long-term thermal effects on injectivity evolution during CO₂ storage. *Intl J. Greenh. Gas Control* **64**, 314–322.
- ZEIDOUNI, M., POOLADI-DARVISH, M. & KEITH, D. 2009 Analytical solution to evaluate salt precipitation during CO₂ injection in saline aquifers. *Intl J. Greenh. Gas Control* **3**, 600–611.
- ZHOU, Q., BIRKHOLZER, J.T., TSANG, C.F. & RUTQVIST, J. 2008 A method for quick assessment of CO₂ storage capacity in closed and semi-closed saline formations. *Intl J. Greenh. Gas Control* **2**, 626–639.
- ZIABAKHSH-GANJI, Z. & KOOI, H. 2014 Sensitivity of Joule–Thomson cooling to impure CO₂ injection in depleted gas reservoirs. *Appl. Energy* **113**, 434–451.