

This is a “preproof” accepted article for Weed Science. This version may be subject to change in the production process, *and does not include access to supplementary material*.
DOI: 10.1017/wsc.2024.83

Short title: Electric inter-row weeding

**Electric inter-row control of lupin plants does not adversely affect the neighbouring
non-target lupin plants**

Catherine PD Borger¹, Miranda J Slaven²

¹Principal Research Scientist (ORCID 0000-0001-8541-3215), Department of Primary Industries and Regional Development, 75 York Rd, Northam WA 6401, Australia.

²Research Scientist (ORCID 0009-0000-9011-3831), Department of Primary Industries and Regional Development, 75 York Rd, Northam WA 6401, Australia.

Author for correspondence: Catherine Borger; Email: catherine.borger@dpird.wa.gov.au

Abstract

Inter-row weed control is used in a wide range of crops, traditionally applied via physical cultivation or banded herbicide application. However, these methods may result in crop damage, herbicide resistance development, or off-target environmental impacts. Electric inter-row weed control presents an alternative, though its potential impact on crop yield requires further investigation. One of the modes of action of electric weed control is the continuous electrode-plant contact method, which passes a current through the weed and into the roots. As the current passes into the roots, it can potentially disperse through the soil to neighbouring root systems. Such off-target current dispersion, particularly in moist topsoil with low resistance, poses potential concern for neighbouring crops when electric inter-row weed control is applied. This research evaluated the continuous electrode-plant contact method, using a ZassoTM XPower machine, in comparison with mowing, across three trials conducted in 2022 and 2023. Both treatments were used to remove target lupin plants adjacent to a row of non-target lupin. Electric weed control was applied to plants in dry soil or following a simulated rainfall event. The trials demonstrated that electric weed control and mowing did not reduce density and biomass of neighbouring non-target lupin plants compared to the untreated control. Likewise, pod and seed production, grain size and protein, as well as grain germinability and vigour of the resulting seedlings was not reduced by these weed control tactics. This research used technology that was not fit for purpose in broad scale grain crops but concludes that electric weed control via the continuous electrode-plant contact method or mowing did not result in crop damage. Therefore, it is unlikely that damage will occur using commercial-grade electric weed control or mowing technology designed for large acreage inter-row weed control, thus offering non-chemical weed management options.

Key words: Continuous electrode-plant contact, electric weed control, electro-weeding, integrated weed management, mowing, physical inter-row weed control, *Lupinus albus* L.

Introduction

Inter-row weed control is a critical practice in a range of agricultural enterprises, from small scale vegetable crops to large acreage grain production (Ozaslan et al. 2024; Peltzer et al. 2009). To date, inter-row weed control has involved physical cultivation, the application of non-selective herbicide via shielded sprayers, or mowing (Hashem et al. 2011; Ozaslan et al. 2024; Peltzer et al. 2009). However, physical cultivation or use of herbicides have been associated with environmental concerns. For example, cultivation can lead to soil compaction, nutrient leaching, erosion and adverse impacts on soil biota (Rowland et al. 2023; Tran et al. 2023). Use of herbicide is increasingly discouraged due to the risks of herbicide resistance, crop damage and yield loss (Peltzer et al. 2009). Mowing has demonstrated effectiveness, as reported by Rowland et al. (2023) in a soybean [*Glycine max* (L.) Merr.] crop where it reduced weed biomass by 60% and increased yield by 14% compared to a non-weeded control. However, its efficacy can be variable due to the weed's ability to resprout (Hashem et al. 2011; Peltzer et al. 2009). Because of these limitations, there is a need for alternative inter-row weed management technologies that reduce soil disturbance or chemical use, including thermal weed control methods such as lasers, flaming, microwave, and electrical control (Loddo et al. 2021; Rowland et al. 2023; Slaven et al. 2023; Tran et al. 2023). For example, electric inter-row weed control has been shown to provide up to 95% control efficacy in vegetable crops (Koch 2022). For large acreage grain crops, the speed and scale of new technologies such as electric weed control is sometimes too low for practicality (Rowland et al. 2023; Slaven et al. 2023). However, the emergence of precision agriculture and autonomous vehicles are a reality for agriculture (Loddo et al. 2021; Slaven et al. 2023; Tran et al. 2023). Autonomous vehicles increase the potential use and practicality of these alternative weed control tactics with slow application speeds by reducing the cost of labour during application.

While electric weed control mitigates those risks posed by physical cultivation or herbicide for inter-row weed management, there is little published field data for this technique and the potential for crop damage or yield loss has not been investigated (Rowland et al. 2023; Slaven et al. 2023). During application of electric weed control via the continuous electrode-plant contact method, an electrode makes physical contact with the target plant, allowing an electrical current to flow through the plant and the roots, and into the soil. The current then returns to the machine as a ground contact device closes the circuit (Bauer et al. 2020; Vigneault and Benoit 2001). This method of weed control is non-selective, and once the electrical current enters the roots of the target plant, there is a possibility for it to disperse

into the surrounding soil. Moreover, the extent of current dispersal depends on both soil moisture and characteristics, with dry or sandy soil (i.e., low organic carbon, electrical conductivity, etc.) exhibiting greater resistance and less current dispersal compared to moist soil or those with higher clay content (Slaven et al. 2023). Consequently, the dispersing current may potentially impact the roots of neighbouring, non-target plants (Slaven et al. 2023; Vigneault and Benoit 2001). A study by Vigoureaux (1981) reported varying levels of control for weedy (bolting) beet plants in sugar beet (*Beta vulgaris* L.) crops when electric weed control was applied under different soil moisture conditions, with improved control (80-92%) in dry soil conditions compared to moist conditions (29-67%). Likewise, Borger and Slaven (2024) noted reduced control of rigid ryegrass (*Lolium rigidum* Gaudin) following application of simulated rainfall to increase volumetric soil moisture from 9.2% to 16.2%. This suggests that efficacy of electric weed control, as well as current dispersal, may be influenced by soil moisture levels, as the current is more likely to remain localised in the target plant in dry conditions. However, the difference in control efficacy could also be attributed to variations in weed recovery rate between moist and dry soil conditions (Slaven et al. 2023).

There is little evidence to indicate if electric weed control applied to inter-row weeds would damage the neighbouring crop plants. Brighenti and Brighenti (2009) investigated inter-row electric weed control in a soybean crop, using prototype machinery at 4400 V or 6800 V in each of two experiments. Their findings indicated 90-100% control of prevalent weeds without impacting crop yield. However, they observed a direct correlation between yield and weed biomass, with lowest yield in the untreated control. Therefore, yield loss was likely related to weed competition. Their investigation did not assess potential damage of electric weed control to crop growth in the absence of weeds. Thus, research is required to assess the impact of electric weed control to neighbouring crop plants in the absence of inter-species competition. Bongard et al. (2022) demonstrated the efficacy of combining electric weed control via the XPower with a prototype XPR applicator (continuous electrode-plant contact method), with a regionally appropriate banded herbicide regime, in the row of sugar beet crops. While electric weed control combined with herbicide controlled 94% of the Canada thistle (*Cirsium arvense* [L.] Scop.), field bindweed (*Convolvulus arvensis* L.) and common lambsquarters (*Chenopodium album* L.), compared to 84% control efficacy achieved by herbicide alone, the study did not assess crop damage or yield. A review by Slaven et al. (2023) found no evidence in the literature of damage from electric weed control (continuous electrode-plant contact method) in horticulture, i.e. damage to mature vines and

tree crops. However, mature vines and tree crops have deep, well-established root systems, as the plants may be several decades old. Damage may occur due to treatment around younger plants with a potentially shallow and less well-established root system. For example, the manual of the Zasso™ XPower machine with XPS applicator advises against treatment around young, unclimbed vines due to potential damage (CNH 2023). An annual crop plant will have a less extensive root system than a mature tree or vine, and so is more likely to be subject to injury. Research is required to determine potential damage to non-target annual crop plants from electric weed control, in the absence of crop-weed competition.

While electric weed control is not currently applied for inter-row weed control of annual crops, advancements in technology highlight the potential for this use pattern in the imminent future. For example, Zasso™ plan to release the XPower with XPR applicator for this purpose (Koch 2022). However, the potential impact of this technology on neighbouring annual crop plants remains unexplored. The aim of the current study was to investigate potential damage to annual crop plants resulting from inter-row application of electrical current to adjacent plants, particularly in soils with varying water content. Lupine (*Lupinus albus* L.) was selected as the test species due to its prior use in inter-row weed control studies utilising herbicides, cultivation or mowing (Hashem et al. 2011; Peltzer et al. 2009). Our hypothesis posited that greater crop damage would occur following application of electric weed control to the inter-row space compared to mowing, due to the movement of electrical current through the soil from the target plant to the non-target plants. Mowing served as a comparison because this method of inter-row weed control had minimal risk of causing any crop damage (particularly in small plot experiments that do not use commercial machinery that may touch the non-target crop plants or cause soil compaction). Compared to mowing, other methods of inter-row weed control like cultivation or herbicide may result in soil throw or spray drift, resulting in damage to non-target plants (Hashem et al. 2011; Peltzer et al. 2009). Additionally, we hypothesised that the extent of crop damage would be influenced by moisture levels, with greater damage expected in moist soil conditions compared to dry soil.

Materials and Methods

Field experiment implementation

For the three field experiments, a weed-free lupin crop was identified, with a row spacing of 22.5 cm. At all sites, the crops did not have weeds, except for some very sparse *L. rigidum* in experiment one. To maintain uniformity, ‘weed control’ via electric weed control or mowing (depending on the trial) was applied to a row of lupins, and then crop yield was assessed in the neighbouring, non-target row of lupins. In the control plots, neighbouring lupin plants

were not removed. Weed free sites were selected because the experiments aimed to assess potential crop damage or yield reduction caused by the dispersion of electrical current to the roots of neighbouring (non-target) plants. The power output and resulting current delivered by an electric weed control applicator into the soil is dependent on plant density. Less power is delivered to bare ground or small, sparse weeds compared to large, dense weeds (CNH 2023). Therefore, to ensure a consistent output of power and accurately assess crop damage, it was necessary to ensure that electric weed control was applied to an evenly spaced, consistent line of plants. In all experiments, 'weed control' (i.e., control of the row of target lupin plants) was performed when the crop reached maturity (anthesis and seed set), ensuring that the roots between plants at a 22.5 cm row spacing would be in physical contact, as indicated by Chen et al. (2014) for lupins in Western Australia. Weed competition can also have an inconsistent impact on crop growth and yield. Therefore, a secondary benefit of weed free sites was that it ensured that the non-target lupins in the control plots where the neighbouring lupin plants were not removed by inter-row weed management would be subject to consistent levels of competition. This approach minimised confounding factors, facilitating a more accurate assessment of the effects of electric weed control on crop performance.

In the following three experiments, electric weed control was conducted using a tractor (New Holland TS100A, CNH Australia Pty Ltd, 31-35 Kurrajong Rd, St Marys, NSW Australia) equipped with an XPower power supply unit. The applicator was a XPS (rear mounted) in 2022 or a XPU (front mounted) in 2023. The XPS features two applicators of 55 cm on each side of the power unit, to the side of the wheelbase. The XPU has a single applicator of 1.2 m across the front of the tractor, with the capacity to be offset (i.e., shifted left or right) from the tractor wheelbase by 50 cm to allow it to contact plants next to the tractor. Note that treatment by either applicator ensures that the tractor is not driving directly next to the row (i.e., applicators are offset from the wheelbase) and there is no physical contact with or soil compaction close to the non-target plants. Each applicator has three arrays of electrodes that are powered by the power supply unit, using 12 inverters to deliver 36 kW (3 kW per inverter). The speed of application was dependant on site, as it was necessary to travel slightly faster when the soil was soft (greater moisture content; Table 1) in the first application time of experiment three. However, manual recommendations for broadleaf control are application speeds of 2-4 km h⁻¹, so all speeds (1.4-2.1 km h⁻¹) were sufficient to control mature lupins (CNH 2023). Inter-row mowing was simulated by using

handheld clippers (Ryobi 18V Hedge and Grass Shears, Bunnings, Cnr Oliver St & Peel Terrace, Northam WA 6401, Australia) to remove the row of lupins at a height of 5 cm.

Experimental design

For experiments one and two, a bulk lupin crop sown on 18 May 2022 was identified. In experiment one (2022), plots measuring 1.57 m wide (i.e., seven rows of lupins at 22.5 cm spacing) by 50 m long were established in a randomised block design with four replications (Table 1). Treatments included electric weed control or an untreated control. Electric weed control was applied using the XPS applicator to each side of the plot along the two outer rows of lupins (Table 2). In the control treatments, the outer lupin rows were left intact. All treatments were applied at anthesis or later, as a standard age for inter-row weed control via herbicide application in the region (Hashem et al. 2011). Measurements (detailed below) were taken from the row of non-target lupins directly adjacent to the outer rows.

In experiment two (2022), plots of 1.12 m wide (5 rows of lupins on 22.5 cm spacing) by 10 m long were established in a randomised block design with four replications. In each plot, the single row of non-target lupins in the center of the five rows was used for sampling. Treatments were applied (on the same date as experiment one, Table 1) to the two rows of target lupins to either side of the centre row. In treatment 1 – control plots, the two rows of lupins growing on either side of the central row were left intact. In treatment 2 – electric weed control, the XPS applicator was used to electrocute the two outer rows of lupins to either side of the central row. In treatment 3 – electric weed control in moist soil, the entire plot area was exposed to a simulated rainfall event with water delivered via a hand-held sprayer system at a rate of 20 L m^{-2} (i.e., 20 mm rain). After ‘rainfall’ the two rows of lupins to either side were electrocuted as for treatment 2. In treatment 4 – mowing, clippers were used to remove the two rows of lupins on either side of the central row.

In experiment three (2023), a bulk lupin crop sown on 24 Apr 2023 was identified. Plots of 0.67 m (3 rows of lupins on 22.5 cm spacing) by 10 m were marked in four banks in a randomised row-column design with four replications. A central row of lupins was marked in each plot, as for experiment two. Each plot was surrounded by bare ground, i.e., no plants aside from the non-target plants and the row of treated plants. Experiment three replicated experiment two, with the same treatments. The single row of lupins on either side of the central row was retained (control) or treated with electric weed control (using the XPU applicator), electric weed control in moist soil, or with mowing. However, the experiment was conducted twice, with treatments applied at an early or late growth stage (Table 1). An additional control (i.e., two controls per block) was included to improve the statistical

comparison of treatments with the control, and to ensure an even treatment number to allow blocking in two directions (to give greater control over spatial variability). Although experiment three treatments replicated experiment two, the two times of application of each treatment (early or late) were randomised within the trial to allow comparison of growth stage, in addition to comparison of the treatments conducted in 2022.

Measurements in the field experiments

Directly prior to treatment application, volumetric soil moisture was assessed to a depth of 12 cm (HydroSense II Handheld Soil Moisture Sensor, Campbell Scientific Australia, 411 Bayswater Rd, Garbutt, Queensland 4814 Australia) at six locations per plot. During the electric weed control treatments, the XPower power unit on the rear linkage of the tractor recorded speed of operation and power output from each of the 12 inverters per second. Power output per inverter (W s^{-1}) was calculated by averaging the power output over the 12 inverters and then over the plot application time (Table 2). Speed data was not analysed since the operator aimed to maintain a consistent speed throughout the treatment process. Tractor power output may be affected by plant density or soil conditions, so an unpaired t-test was used to compare average power output between treatments (GenStat, VSN International 2024).

Immediately following treatment application, visual assessment of target lupin plants was used to confirm that all plants had been treated with electric weed control or mowing. Treatment effects were visible as electric weed control results in immediate wilting and darkening of plant foliage. A visual assessment was also used to assess potential damage to non-target lupin plants resulting from the treatment of target plants. Visual assessment was repeated one week after treatment and again at crop senescence to assess mortality of target plants (i.e., check for regrowth following treatment). However, there were no signs of survival or regrowth of the treated plants in both electric weed control and mowing plots. For the non-target lupins, the number of plants was assessed in two linear meters of crop in the central row of each plot. The above-ground plant biomass in the two linear meters was harvested and samples were weighed. Yield was assessed by manually counting pod number and seed number and determining seed weight. Seed were subjected to XDS near-infrared spectroscopy (InfratecTM NOVA FOSS, FOSS Pacific Pty Ltd, 5/3-5 Anzed Court, Mulgrave VIC 3170) to assess grain protein and moisture. Average grain moisture was $9.72 \pm 0.04\%$, $9.51 \pm 0.05\%$ and $9.63 \pm 0.04\%$ in experiments one, two and three. Protein results were adjusted to 10% moisture to standardise comparisons between treatments and account for

differences in moisture content. Seed from each treatment was retained to assess germination and seedling vigour.

Analysis of variance (ANOVA) was performed on lupin density, biomass, yield and grain quality data, and least significant difference (LSD) was used for means comparison. Each experiment was analysed separately, to allow the two application timings (early and late growth stage) in experiment three to be compared (as opposed to a joint analysis of the treatments in experiment two, experiment three timing one and experiment three timing two). For experiment three, an unbalanced design (i.e., two control treatments) necessitated the generation of two LSD values. The comparison between the control and the other treatments required the LSD for maximum and minimum replication and the comparison between the treatments required the LSD for minimum replication. To ensure consistent variance, a logarithmic (base 10) transformation was performed on the number of seed pods per plant, number of seeds per plant, and seed weight data from experiment one. Where a transformation was used, means are presented as both transformed and back-transformed values, with the LSD applied to the transformed values.

Climate data

At the end of the season, climate data for the experimental year and long-term average data was obtained from two weather stations: Wongan Hills (station 008137) and Northam (station 10111) (Bureau of Meteorology 2023). For each site the average maximum and minimum temperatures during the experimental year were similar to the long-term averages, and similar between sites (data not presented, Bureau of Meteorology 2023). By comparison, rainfall data was not similar between sites or similar to the long-term average. Rainfall in Wongan Hills 2022 totalled 461 mm, greater than the long-term average rainfall of 387 mm (Figure 1). Rainfall in Northam 2023 was 269 mm, which was lower than the long-term average of 426 mm.

Germinability of seeds from non-target plants

To assess germinability of the seed from non-target plants in the central row of each plot, 50 seeds were taken from each of the two samples harvested from each plot. They were placed in petri dishes on filter paper, with 6 mL distilled water (on 7 Mar 2023 or 29 Jan 2024). Seeds were maintained in a germination cabinet at a 12-hour temperature cycle of 10-20°C. Additional distilled water was added where required to ensure Petri dishes remained moist. After 16 days, germinated seeds (i.e., those seeds with emerged hypocotyls of at least 1 cm length) were counted. An ANOVA was performed on the germination data, and LSD was used for means comparison. To ensure consistent variance, germination data from experiment

three required a square root transformation. Where a transformation was used, means are presented as both transformed and back-transformed values, and the LSD should be applied to the transformed values.

Vigour of seedlings from non-target plants

To assess seedling vigour of the seeds produced by the non-target plants, 20 seeds were taken from each of the two samples harvested from each plot. They were sown in pots (of 30 cm by 15 cm by 5 cm height) filled with sand, at a depth of 2 cm (on 17 Mar 2023 or 29 Jan 2024). Pots were arranged in a randomised block design with the same replication structure as the trials, maintained in a 12-hour temperature cycle of 10-20°C and watered (overhead sprinkler irrigation) to ensure that the surface soil remained damp. After 16 days, emerged seedlings were counted. Seedlings were cut off at the base of the hypocotyl, dried at 60°C for three days and dry biomass was assessed. Analysis of variance was applied to the emergence and biomass data, and LSD was used for means comparison.

Results and Discussion

As stated, visual assessment of the target lupin plants indicated that electric weed control and mowing had 100% control, with no evidence of survival or regrowth of target plants one week after treatment or at harvest when the non-target lupin plants were sampled (Figure 2). It is likely that these inter-row weed control methods will be effective for control of blue lupine (*Lupinus cosentinii* Guss), which is particularly difficult to control selectively in lupin crops (Hashem et al. 2011). Initial research indicated that electric weed control is comparable to control provided by herbicides for a range of broadleaf and grass species (Koch 2022; Slaven and Borger 2024; Slaven et al. 2023), but further research is required to assess efficacy on further weed species at different ages and densities.

Visual assessment of non-target lupin plants in all experiments at the time of application and one week after application indicated no initial plant damage (Figure 2). Electric weed control directed to target plants makes the foliage visibly wilt following application, but this wilting was not apparent for the non-target plants that had no direct contact with the applicators. There were no signs of physical damage to the non-target plants due to the passage of machinery, but treatments were designed to avoid physical contact with non-target plants.

In experiment one, electric weed control had no effect on the density or biomass of the non-target lupin plants in the central row of the plot (Table 3). Further, the number of pods per plant, number of seeds and seed weight were similar between the control and the electric weed control treatment. The weight of individual seeds, protein and germination of the seed

retained from each treatment were likewise similar (Table 4). The assessment of seedling vigour indicated no difference in emergence or seedling biomass (Figure 3).

In experiment two, the treatments had no impact on plant density, but dry biomass, seed pods, number of seeds and seed weight per plant was lower in the control treatment compared to mowing or electric weed control (Table 5). This discrepancy can be attributed to the presence of the plants growing either side of the row of non-target lupin plants in the control plots, which were not removed via inter-row weed control tactics. In the treated plots the plants on either side of the non-target lupin plants were removed by mowing or electric weed control. The presence of the neighbouring plants in the control plots would increase intra-species competition for resources during anthesis and seed production, compared to the treated plots. Tobiasz-Salach et al. (2023) demonstrated reduced number of seeds per pod and seed weight per plant when lupin seeding density was increased, highlighting the impact of intra-species competition in determining reproductive success of individual plants. For all treatments, weight of individual seeds was similar between treatments, but seed protein was slightly lower in the electric weed control treatments compared to the control plots, likely due to increased yield and the resulting protein dilution (Table 6). Electric weed control and mowing had no effect on germination of the seed retained at harvest, with 100% germination observed in all treatments (Table 6). Seedling emergence and biomass were also similar between treatments (Figure 4).

In experiment three, despite the similarity in the number of plants across treatments, a nearly significant difference ($P: 0.051$) was observed in dry biomass per plant. At the earlier plant growth stage, electric weed control following simulated rainfall had a higher biomass than the other treatments (except for mowing; Table 7). Likewise, the number of pods per plant, number of seeds per plant or seed yield was also greatest following electric weed control with water at the early plant growth stage, and higher in the mowing treatment than the control. The enhanced growth after mowing at the early growth stage, compared to the control, is again likely due to altered intra-species competition for resources during anthesis and seed production, as mentioned previously. The yield increase with electric weed control following water at the early growth stage likely resulted from the reduced plant competition and increased soil moisture at time of treatment (3.32% to 10.25% soil moisture). As stated, 2023 was an unusually dry year (Figure 1) and lupin yield is highly sensitive to drought stress during seed production, particularly in the rain-fed mediterranean climate of southern Australia (Palta et al. 2004; Reader et al. 1997). The treatments had no impact on grain

quality, with no differences between seed weight or protein (Table 8). Likewise, there was no impact on germinability, emergence or seedling biomass (Table 8, Figure 5).

This research concludes that inter-row electric weed control or mowing within a lupin crop did not reduce the biomass of adjacent non-target lupin plants, yield, or seed quality, compared to the untreated control. These findings suggest that these weed management tactics do not pose a risk to the productivity or quality of lupin crops. The biomass and yield of the lupin crops were highly variable between the experiments in 2022 and 2023, but as stated, 2022 rainfall was above average and 2023 was an unusually dry year. It has previously been indicated that lupin growth and yield is highly variable, affected by abiotic stresses like water stress, water logging, low radiation or low temperatures during winter or dry conditions and high temperatures during seed production in spring (Palta et al. 2004; Reader et al. 1997). The lack of damage to crop yield or biomass from electric weed control contrasts with other methods of inter-row weed control, which often result in crop damage. Traditional methods such as tillage can cause physical damage to crops from implements traversing the row or soil throw, while herbicide applications may lead to damage due to drift, or residual movement in the soil or in the crop residue (Peltzer et al. 2009). However, while the current study investigated immediate signs of wilting or physical damage to the non-target plants, it did not assess root biomass. Further research is required to determine if any reduction in root growth occurs, which the plants may or may not subsequently recover from prior to harvest.

This study likewise found no impact of treatments on individual seed size, germinability or early seedling vigour and biomass. This is a valuable finding for growers who retain their crop seed to resow in the subsequent year and need to know that weed management tactics will not impact the early vigour of the following crop. In lupins, traits of seed quality are correlated. For example, Berger et al. (2017) related early vigour (i.e., biomass at 45 days after sowing) to seed weight in *Lupinus albus*, narrowflower lupine (*Lupinus angustifolius* L.) and European yellow lupine (*Lupinus luteus* L.). In the current experiments, there was no significant difference between the weight of individual seeds, even in experiment two where the control had significantly fewer seeds per plant and increased protein. Therefore, emergence and early seedling biomass were expected to be similar between treatments.

Grain protein was not affected by the treatments, so it is likely that electric weed control or mowing had no impact on root nodulation, a crucial process for nitrogen fixation in legumes. The total quantity of nitrogen fixed by the rhizobia and the amount of nitrogen transferred from the sink of surplus nitrogen to the seed at grain fill both rely on plant growth and environmental factors (Ahemad and Khan 2013; Sandana et al. 2009). Since electric weed

control did not affect plant growth (biomass or yield), it is unlikely to impact total nitrogen production or grain protein. However, the current study did not assess levels of rhizobia in the soil, nodulation, or total nitrogen production. Further research is required to explore the potential effects of electric weed control at varying times of the year on rhizobium inoculum in the soil, its interactions with the plants, and its longevity within the crop rotation.

Interestingly, our study found no impact of soil moisture on electric weed control. Even with increased soil moisture from simulated rainfall, the neighbouring, non-target plants were unaffected in the current trials, confirming the results of Koch (2022). However, Borger and Slaven (2024) noted reduced electric weed control efficiency following simulated rainfall to create wet topsoil, highlighting that slower application speeds (i.e., a higher ‘dose’ of electrical current) may be required for optimal weed control in moist soil.

Other recent studies on electric inter-row weed control have used the Weed ZapperTM and are not comparable to the current work (Rowland et al. 2023; Schreier et al. 2022). The Weed ZapperTM can only target weeds after they have grown above the crop canopy, in physical contact or proximity to the copper boom. As a result, electric weed control in these studies provided poor weed control because it was applied late in the growing season and only targeted selected (tall) weed species, and further caused crop damage when the boom came into contact with the crop canopy (Fickett et al. 2013; Rowland et al. 2023; Schreier et al. 2022). By comparison, the current research used the XPower to apply electric weed control to ‘weeds’ (i.e., rows of lupin plants) on the ground and found that electric weed control efficacy was comparable to mowing and did not result in crop damage. In the current research, the experimental design aimed to avoid direct contact of the applicators with the non-target crop plants, and so avoid damage to non-target plants via direct application of current or by physical contact of the machine. As stated, there was no sign of physical injury or wilting from electric weed control at time of application. However, it is important to note that the machinery used in the current work was designed for inter-row weeding in viticulture or horticulture (XPS applicator) or for urban environments (XPU applicator), rather than grain crops. There are new iterations of the technology designed for inter-row weed control in cropping, using shielded inter-row units at ground level (Koch 2022). This system uses the same inverters as the current research, delivering the same power per second, but consists of inter-row applicators that are designed to avoid physical contact with above ground crop biomass and should minimise crop damage and avoid reductions to yield, as long as root damage to neighbouring plants can be excluded as for the current research. However, the current research cannot consider all forms of potential crop damage. Any inter-row weed

management technique that involves driving machinery through crop is likely to result in a yield reduction (i.e., physical damage to the crop from the movement of machinery, soil compaction etc.) unless the grower employs a controlled traffic farming system (Tullberg et al. 2007). This highlights the need for continued research on inter-row electric weed control or mowing, using commercial machinery designed for this specific purpose, to provide insights into the practical application and potential benefits of these techniques in agricultural settings. Such research should also determine the machinery's commercial viability through considering both cost-effectiveness and scalability for on-farm use with comparison to other novel non-chemical weed control methods.

Power output was variable between experiments (Table 2) but contrary to expectations, electric weed control power output was not affected by soil moisture. At a soil moisture content of 2.07% and 5.39% in experiment two, there was no significant difference in power output (Table 2, P : 0.889). Likewise, in experiment three, power output remained unaffected by the soil moisture content at both the first application time with soil moisture at 3.32% or 10.25% (P : 0.242) and the second application time with soil moisture at 0.85% or 3.52% (P : 0.236, Table 2). However, in experiment three the power output was significantly different between growth stages, with an average power output of 2800 ± 7 at anthesis and 734 ± 34 $\text{interver}^{-1} \text{ s}^{-1}$ at grain fill ($P < 0.001$). This divergence underscores the influence of plant development on the efficacy of electric weed control methods, with greater power output observed at the first application time because the plants were larger (CNH 2023). As lupin plants complete grain fill, leaves shed, and the plant biomass and moisture content are reduced (Hocking 1982).

As stated, the current research did not perform inter-row weed control in a weedy site, but targeted rows of lupin plants as substitute 'weeds' within a weed-free crop. Removing real weeds, with technology fit for purpose, may impact the results. Firstly, power output for inter-row electric weed control may vary significantly when targeting actual weed species, as current is related to plant density and foliage contact time with the electrodes (CNH 2023). Secondly, controlling weeds may involve working closer to the non-target row of crop plants. If the plants subject to electric weed control were closer to the non-target plants, then any current moving through the soil from the roots of one plant to another would travel over a shorter distance. This may increase the potential damage to non-target plants. However, the lupin plants treated here were sufficiently mature that it is reasonable to assume their roots were in physical proximity to the roots of plants in the neighbouring row, given that the rows were only 22.5 cm apart (Chen et al. 2014). This is a narrow spacing between plants, given

that row spacing for lupin crops can be as wide as 76 cm or 90 cm (Bhardwaj et al. 2004; Hashem et al. 2011; Putnam et al. 1992). However, further research is required to understand the below-ground behaviour of the current flow during application, with simulations to determine the pathways of electricity through soil or roots. Further, plant and root density and biomass assessments are required to understand the thresholds for current passing into neighbouring plants.

This research utilised machinery currently not fit for purpose in large acreage crops to apply electric weed control to plants on the ground (rather than plants growing above the crop canopy), simulating inter-row weed control. It found that electric weed control efficacy in removing ‘weeds’ (i.e., rows of lupin plants) was comparable to mowing and did not result in crop damage even when soil moisture was increased (i.e., the soil’s resistance to dispersal of the electrical current was reduced). Using this machinery, the experimental design aimed to avoid direct contact of the electrodes with the non-target crop plants to illustrate that it is unlikely that damage will occur using future commercial-grade electric inter-row weed control. There are new iterations of this machinery designed for inter-row weed control in cropping under development, using shielded inter-row units at ground level designed to avoid physical contact with above ground crop biomass (Koch 2022). However, further studies should explore the commercial viability of electric weed control systems for broad scale crops, considering both cost-effectiveness and scalability. The current research concludes that electric inter-row weed control did not impact lupin yield, but more research is required to assess electric weed control at younger plant growth stages, or in alternative crops.

Acknowledgement

We are grateful for field support from Dave Nicholson and Nerys Wilkins (DPIRD), staff at the Wongan Hills or Northam DPIRD Research Stations, the grower who allowed us to use his bulk lupin crop in the 2023 trial and statistical advice from Andrew van Burgel (DPIRD). We want to thank Arslan Peerzada, Mark Seymour (DPIRD) and Maximilian Koch (Norwegian Centre for Organic Agriculture) for their review of this research.

Author contributions

Both authors were equally engaged in conceptualisation and data analysis. M Slaven took a lead role in methodology and data curation. CPD Borger was responsible for funding acquisition, project administration and took a lead role in drafting the paper.

Funding

This work was supported through collaboration with CNH in partnership with ZassoTM. It was funded by Grains Research and Development Corporation; Wine Australia; and the Cotton Research and Development Corporation.

Competing Interests

The authors declare none.

References

- Ahemad M, Khan MS (2013) Pesticides as antagonists of rhizobia and the legume-*Rhizobium* symbiosis: a paradigmatic and mechanistic outlook. *Biochem & Molecular Biol* 1:63-75
- Bauer M, Marx C, Bauer F, Flury D, Ripken T, Streit B (2020) Thermal weed control technologies for conservation agriculture - A review. *Weed Res* 60:241-250
- Berger JD, Shrestha D, Ludwig C (2017) Reproductive strategies in mediterranean legumes: trade-offs between phenology, seed size and vigor within and between wild and domesticated *Lupinus* species collected along aridity gradients. *Front Plant Sci* 8:548
- Bhardwaj HL, Hamama AA, Santen E (2004) White lupin performance and nutritional value as affected by planting date and row spacing. *Agron J* 96:580-583
- Bongard M, Haberlah-Korr V, Koch M. 2022. Alternative weed control in sugar beet - verification of the efficiency of mechanical and electrical inter-row treatment (Alternative Unkrautregulierung in Zuckerrüben – Überprüfung der Effizienz mechanischer und elektrischer Zwischenreihenbehandlung). Pages 255-261 30th German workshop on questions of weed biology and control. Julius Kühn Institute
- Borger CPD, Slaven MJ (2024) Does soil moisture impact electric weed control efficiency? *in* Proceedings of the 23rd Australasian weeds conference. Breaking the cycle: towards sustainable management. Brisbane, Qld
- Brighenti AM, Brighenti DM (2009) Weed control in organic crops of soybean by means of electric shock. *Ciência Rural* 39:2315-2319
- Bureau of Meteorology (2023) Climate data online. <http://www.bom.gov.au/climate/data>. Accessed 8 Feb, 2024
- Chen YL, Palta J, Clements J, Buirchell B, Siddiqueb KHM, Rengel Z (2014) Root architecture alteration of narrow-leafed lupin and wheat in response to soil compaction. *Field Crop Res* 165:61-70
- CNH (2023) XPower XPS powered by Zasso™. <https://agxtend.com/en/products/xpower/>. Accessed 25 May, 2024
- CSBP Ltd. (2010) CSBP soil and plant testing laboratory: methods. Perth: CSBP.
- Denton MD, Phillips LA, Peoples MB, Pearce DJ, Swan AD, Mele PM, Brockwell J (2017) Legume inoculant application methods: effects on nodulation patterns, nitrogen fixation, crop growth and yield in narrow-leaf lupin and faba bean. *Plant Soil* 419:25-39
- Fickett ND, Boerboom CM, Stoltenberg DE (2013) Soybean yield loss potential associated with early-season weed competition across 64 site-years. *Weed Sci* 61:500-507

- Hashem A, Collins RM, Bowran DG (2011) Efficacy of interrow weed control techniques in wide row narrow-leaf lupin. *Weed Technol* 25:134-140
- Hess M, Barralis G, Bleiholder H, Buhr L, Eggers TH, Hack H, Stauss R (1997) Use of the extended BBCH-scale - general for the description of the growth stages of mono- and dicotyledonous weed species. *Weed Res* 37:433-441
- Hocking PJ (1982) Effect of water stress on redistribution of nutrients from leaflets of narrow-leaved lupin (*Lupinus angustifolius* L.). *Ann Bot* 49:541-543
- Koch M (2022) Launch of XPower inter row concept solution. https://zasso.com/launch_xpr_eng/. Accessed 25 May, 2024
- Lemerle D, Hinkley RB (1991) Tolerances of canola, field pea, lupin and faba bean cultivars to herbicides. *Aust J Exp Agric* 31:379-386
- Loddo D, McElroy JS, Giannini V (2021) Problems and perspectives in weed management. *Ital J Agron* 16:1854
- Ozaslan C, Gürsoy S, DiTommaso A (2024) Band herbicide application combined with inter-row cultivation as a sustainable weed management strategy for reducing herbicide use: a meta-analysis. *Crop Prot* 175:106474
- Palta JA, Turner NC, French RJ (2004) The yield performance of lupin genotypes under terminal drought in a Mediterranean-type environment. *Aust J Agric Res* 55:449-459
- Peltzer SC, Abbott L, Atkins CA (2002) Effect of low root-zone temperature on nodule initiation in narrow-leafed lupin (*Lupinus angustifolius* L.). *Aust J Agric Res* 53:355-365
- Peltzer SC, Hashem A, Osten VA, Gupta ML, Diggle AJ, Riethmuller GP, Douglas A, Moore M, Koetz EA (2009) Weed management in wide-row cropping systems: a review of current practices and risks for Australian farming systems. *Crop Pasture Sci* 60:395-406
- Putnam DH, Wright J, Field LA, Ayisi KK (1992) Seed yield and water-use efficiency of white lupin as influenced by irrigation, row spacing, and weeds. *Agron J* 84:557-563
- Rayment G, Lyons D (2011) *Soil chemical methods: Australasia*. Melbourne: CSIRO Publishing.
- Reader MA, Dracup M, Atkins CA (1997) Transient high temperatures during seed growth in narrow-leafed lupin (*Lupinus angustifolius* L.). I. High temperatures reduce seed weight. *Aust J Agric Res* 48:1169-1178
- Rowland AV, Menalled UD, Pelzer CJ, Sosnoskie LM, DiTommaso A, Ryan MR (2023) High seeding rates, interrow mowing, and electrocution for weed management in organic no-till planted soybean. *Weed Sci* 71:478-492

- Sandana PA, Harcha CI, Calderini DF (2009) Sensitivity of yield and grain nitrogen concentration of wheat, lupin and pea to source reduction during grain filling. A comparative survey under high yielding conditions. *Field Crop Res* 114:233-243
- Schreier H, Bish M, Bradley KW (2022) The impact of electrocution treatments on weed control and weed seed viability in soybean. *Weed Technol* 36:481-489
- Slattery JF, Coventry DR, Slattery WJ (2001) Rhizobial ecology as affected by the soil environment. *Aust J Exp Agric* 41:289-298
- Slaven MJ, Borger CPD. 2024. Electric weed control for fence line management of resistant weeds 23rd Australasian Weeds Conference. Breaking the cycle: towards sustainable weed management. Brisbane, Qld: Invasive Species Queensland, Council of Australasian Weed Societies.
- Slaven MJ, Koch M, Borger CPD (2023) Exploring the potential of electric weed control: a review. *Weed Sci* 71:403-421
- Tobiasz-Salach R, Jańczak-Pieniążek M, Augustyńska-Prejsnar A (2023) Effect of different row spacing and sowing density on selected photosynthesis indices, yield, and quality of white lupine seeds. *agric* 13:1845
- Tran D, Schouteten JJ, Degieter M, Krupanek J, Jarosz W, Areta A, Emmi L, De Steur H, Gellynck X (2023) European stakeholders' perspectives on implementation potential of precision weed control: the case of autonomous vehicles with laser treatment. *Precis Agric* 24:2200-2222
- Tullberg JN, Yule DF, McGarry D (2007) Controlled traffic farming—From research to adoption in Australia. *Soil Tillage Res* 97:272-281
- Vigneault C, Benoit DL (2001) Electrical weed control: theory and applications. *in* Vincent C, Panneton B, Fleurat-Lessard F, eds. *Physical control methods in plant production*. Berlin Heidelberg Paris: Springer-Verlag
- Vigoureux A (1981) Results of trials carried out in Belgium in 1980 about killing weed beets by electric discharge. *Mededelingen van de Faculteit Landbouwwetenschappen Rijksuniversiteit Gent* 46:163 - 171
- VSN International (2024) *GenStat for Windows* 24th edition. Hemel Hempstead, UK: VSN International.

Table 1. The experimental year, location, soil characteristics, lupin growth stage, treatment application date and soil moisture (initial soil moisture and moisture directly after simulated rainfall).

Experiment	One	Two	Three	
Year	2022	2022	2023	
Location	Wongan Hills Research Station (-30.8496, 116.7372)		Northam (-31.6511, 116.6984)	
Soil characteristics*	Yellow grey sandy loam (5% gravel), nitrate nitrogen 8 mg kg ⁻¹ , phosphorus (Colwell) 32 mg kg ⁻¹ , potassium (Colwell) 36 mg kg ⁻¹ , sulfur 6.2 mg kg ⁻¹ , organic carbon 0.53%, conductivity 0.056 dS m ⁻¹ , pH _(CaCl2) 6.4, pH _(H2O) 7.2.		Light brown sandy loam (5-10% gravel), nitrate nitrogen 8 mg kg ⁻¹ , phosphorus (Colwell) 39 mg kg ⁻¹ , potassium (Colwell) 84 mg kg ⁻¹ , sulfur 2.1 mg kg ⁻¹ , organic carbon 0.8%, conductivity 0.035 dS m ⁻¹ , pH _(CaCl2) 4.8, pH _(H2O) 5.8.	
Lupin growth stage**	Principal growth stage 6; flowering		Early growth stage: between principal growth stage 5 and 6; inflorescence emergence and flowering	Late growth stage: between principal growth stage 6 and 7; flowering and seed/pod production.
Treatment date	2/Sep/2022		17-18/Aug/2023	31/Aug/2023
Initial soil moisture	1.38 ± 0.18%	2.07 ± 0.18%	3.32 ± 0.26%	0.85 ± 0.09%
Soil moisture following simulated rainfall		5.39 ± 1.03%	10.25 ± 1.39%	3.52 ± 0.60%

*Results of a test from CSBP Soil and Plant Analysis Laboratory (2 Altona St, Bibra Lake WA 6163, CSBP Ltd. 2010; Rayment and Lyons 2011).

**Principal growth stages for dicotyledonous weed species as described by Hess et al. (1997).

Table 2. Details of the electric weed control treatments applied in each experiment, including application speed and power output averaged over the 12 inverters.

Treatment	Application details	Experiment one	Experiment two	Experiment three	
				Early growth stage	Late growth stage
Electric weed control	Speed	1.4 km h ⁻¹	1.4 km h ⁻¹	2.1 km h ⁻¹	1.5 km h ⁻¹
	Power	1141 ± 24 W inverter ⁻¹ s ⁻¹	2019 ± 33 W inverter ⁻¹ s ⁻¹	2794 ± 3 W inverter ⁻¹ s ⁻¹	727 ± 67 W inverter ⁻¹ s ⁻¹
Electric weed control following simulated rainfall	Speed		1.4 km h ⁻¹	2.1 km h ⁻¹	1.5 km h ⁻¹
	Power		2059 ± 29 W inverter ⁻¹ s ⁻¹	2806 ± 2 W inverter ⁻¹ s ⁻¹	752 ± 69 W inverter ⁻¹ s ⁻¹

Table 3. The effect of inter-row electric weed control on the average plant density (per linear meter), as well as biomass at harvest, number of pods, number of seeds, and seed yield per plant for lupin plants in the row neighbouring each treatment, in experiment one. The P and LSD values are presented for each comparison.

Treatment	Number of plants	Dry biomass	Number of pods*	Number of seeds *	Seed yield
	m ⁻¹	g plant ⁻¹	-----plant ⁻¹ -----		g plant ⁻¹
Control	12.2	131.2	21.9 (1.34)	97.7 (1.99)	16.6 (1.22)
Electric weed control	10.0	110.9	22.4 (1.35)	104.7 (2.02)	18.3 (1.26)
P (and LSD)	0.453 (8.33)	0.620	0.956 (0.45)	0.899 (0.47)	0.825 (0.45)
		(117.40)			

*A logarithmic (base 10) transformation was applied prior to analysis. The back-transformed means are presented in the table, with the transformed means in brackets. The LSD value should be applied to the transformed means.

Table 4. The effect of inter-row electric weed control on lupin grain quality, including individual seed weight, seed protein and germination of lupin seeds harvested from plants in the row neighbouring each treatment, in experiment one. The P and LSD values are presented for each comparison.

Treatment	Seed weight	Seed protein	Seed germination
	g seed ⁻¹	-----%-----	-----
Control	0.169	27.9	99.7
Electric weed control	0.174	28.1	100.0
P (and LSD)	0.155 (0.01)	0.529 (1.01)	0.351 (0.59)

Table 5. The effect of inter-row electric weed control or mowing on the average plant density (per linear meter), as well as biomass at harvest, number of pods, number of seeds, and seed yield per plant for lupin plants in the row neighbouring each treatment, in experiment two. The P and LSD values are presented for each comparison.

Treatment	Number of plants m ⁻¹	Dry biomass g plant ⁻¹	Number of pods -----plant ⁻¹ -----	Number of seeds -----	Seed yield g plant ⁻¹
Control	13.0	59.2	12.1	49.6	8.0
Mowing	13.2	133.9	28.2	125.6	20.4
Electric weed control	14.0	123.9	25.7	108.9	18.8
Electric weed control after watering	15.6	114.1	23.7	106.4	17.7
P (and LSD)	0.525 (4.24)	0.011 (40.96)	0.011 (8.75)	0.011 (40.90)	0.008 (6.61)

Table 6. The effect of inter-row electric weed control or mowing on lupin grain quality, including individual seed weight, seed protein and seed germination of lupin seeds harvested from plants in the row neighbouring each treatment, in experiment two. The P and LSD values are presented for each comparison.

Treatment	Seed weight	Seed protein	Seed germination
	g seed ⁻¹	-----%	-----
Control	0.160	28.3	100
Mowing	0.164	27.9	100
Electric weed control	0.173	27.3	100
Electric weed control after watering	0.168	27.7	100
P (and LSD)	0.061 (0.010)	0.012 (0.54)	NA

Table 7. The effect of inter-row electric weed control or mowing at two different growth stages on the average plant density (per linear meter), as well as biomass at harvest, number of pods, number of seeds, and seed yield per plant for lupin plants in the row neighbouring each treatment, in experiment three. The P and LSD* values are presented for each comparison.

Treatment	Plant growth stage	Number of plants m^{-1}	Dry biomass $g\ plant^{-1}$	Number of pods ----- $plant^{-1}$ ----- ----	Number of seeds $g\ plant^{-1}$	Seed yield $g\ plant^{-1}$
Control		10.9	22.1	4.2	66.7	8.2
Mowing	Early growth stage	12.0	34.2	7.1	109.0	13.3
Electric weed control	Early growth stage	11.9	26.4	5.3	82.6	10.5
Electric weed control after watering	Early growth stage	9.4	39.3	7.9	124.1	15.2
Mowing	Late growth stage	11.7	26.5	5.3	79.7	10.0
Electric weed control	Late growth stage	11.9	23.7	4.4	68.7	9.0
Electric weed control after watering	Late growth stage	11.7	26.4	5.1	80.9	10.5
P		0.689	0.051	0.018	0.021	0.036
LSD min replication		3.55	12.07	2.35	37.00	4.64
LSD max-min replication		3.07	10.45	2.03	32.05	4.02

*The control should be compared to treatments using the LSD for maximum-minimum replication and comparisons between treatments should use the LSD for minimum replication.

Table 8. The effect of inter-row electric weed control or mowing at two different growth stages on lupin grain quality, including individual seed weight, seed protein and seed germination of lupin seeds harvested from plants in the row neighbouring each treatment, in experiment three. The P and LSD values are presented for each comparison.

Treatment	Plant growth stage	Seed weight g seed ⁻¹	Seed protein -----%-----	Seed germination* -----
Control		0.123	28.0	97.5 (1.59)
Mowing	Early	0.122	27.9	99.9 (0.25)
Electric weed control	growth	0.127	27.7	99.5 (0.68)
Electric weed control after watering	stage	0.122	28.0	99.4 (0.78)
Mowing	Late growth	0.126	27.9	98.2 (1.35)
Electric weed control	stage	0.131	27.9	98.1 (1.39)
Electric weed control after watering		0.129	28.0	98.9 (1.07)
P		0.136	0.585	0.251
LSD min replication		0.008	0.32	1.28
LSD max-min replication		0.007	0.28	1.11

*A square root transformation (of the percent of non-germinated seed, i.e., 100%-seed germination%) was applied prior to analysis. The back-transformed means (as percent germination) are presented in the table, with the transformed means in brackets. The LSD value should be applied to the transformed means.

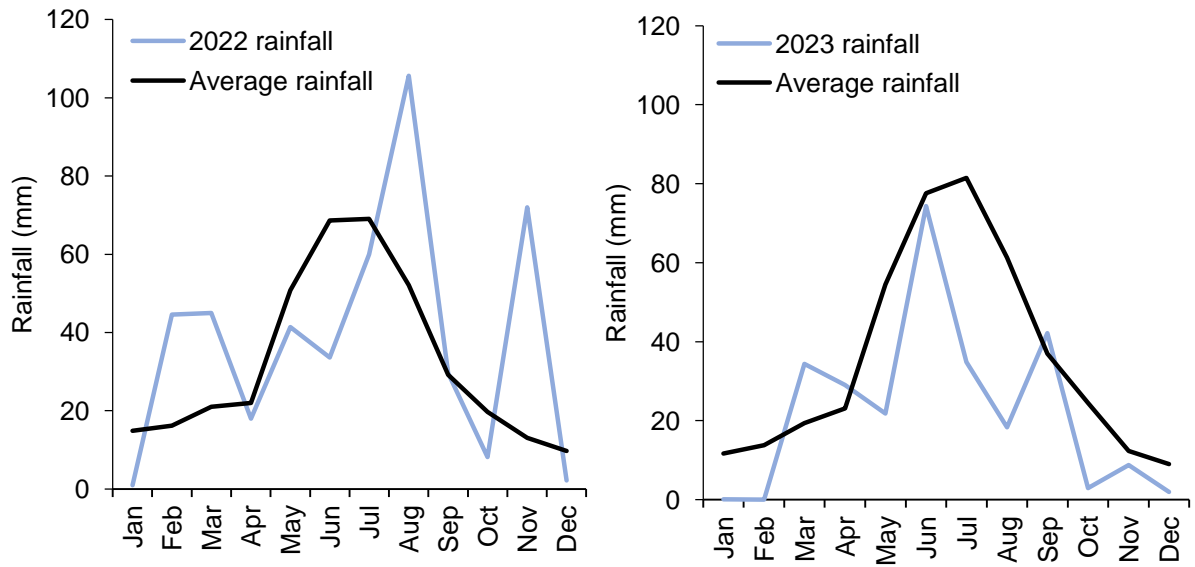


Figure 1. Total monthly rainfall for 2022 in Wongan Hills (left) and 2023 in Northam (right) compared to the long-term average monthly rainfall for each site (1907-2024 at Wongan Hills and 1877-2024 at Northam) (Bureau of Meteorology 2023).



Figure 2. A row of senescing target lupin plants one week after treatment with electric weed control, on the right side of the row of the untreated, non-target plants (left). A row of dead target lupin plants on the left side of the untreated, non-target plants at harvest (right). There was no evidence of target plants resprouting following electric weed control.

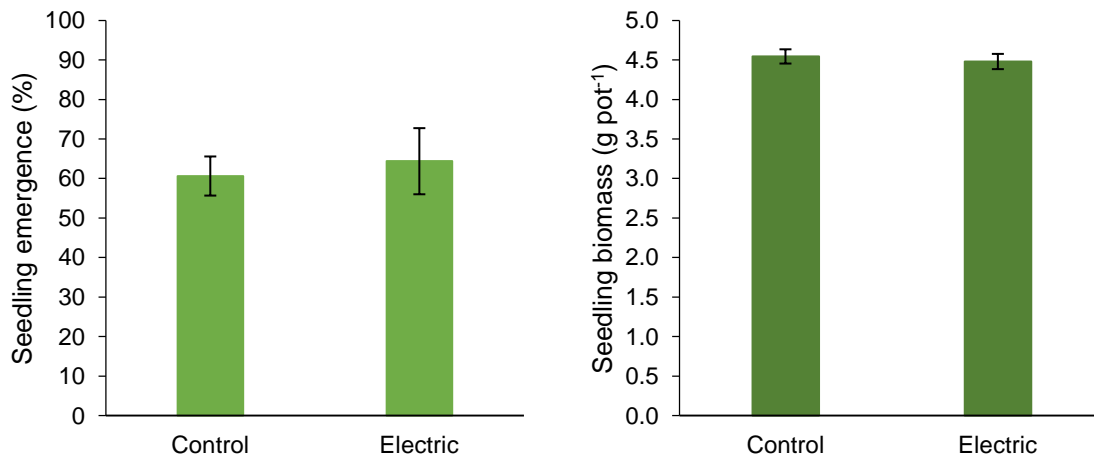


Figure 3. The emergence (P: 0.700, LSD: 22.09) and seedling biomass (P: 0.670, LSD: 0.34) of 20 lupin seeds sown in pots, obtained from plants from the control or electric weed control treatments in experiment one. Vertical bars indicate the standard error of 8 replications.

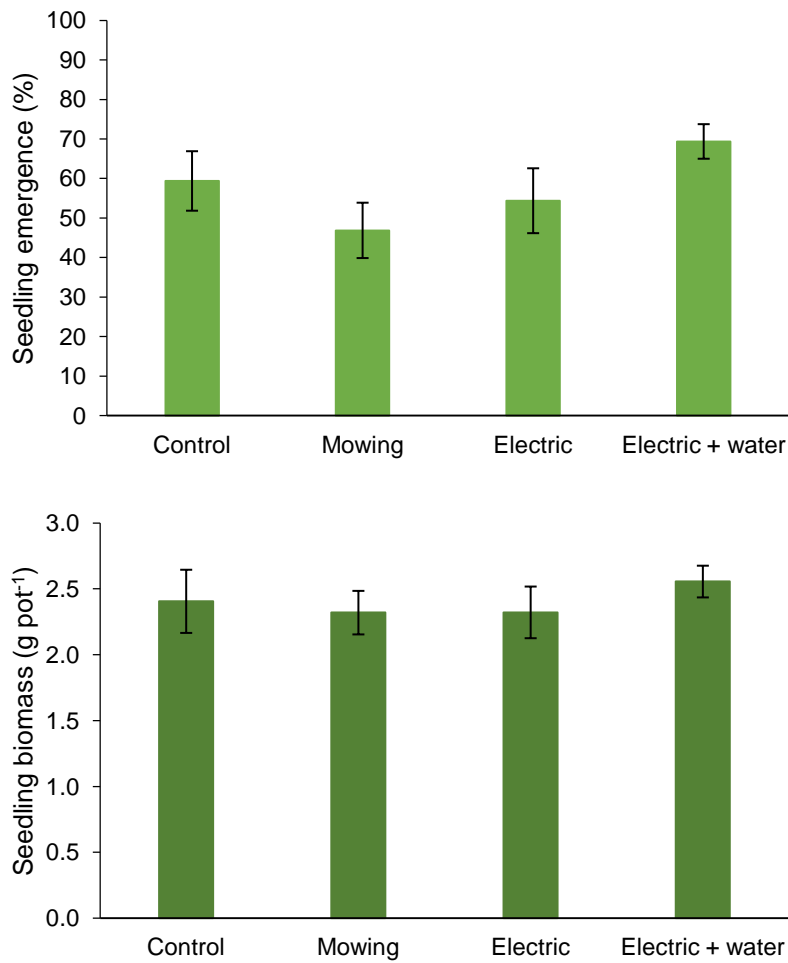


Figure 4. The emergence (P: 0.054, LSD: 16.02) and seedling biomass (P: 0.595, LSD: 0.41) of 20 lupin seeds sown in pots, obtained from plants from the control, mowing or electric weed control treatments with or without water in experiment two. Vertical bars indicate the standard error of 8 replications.

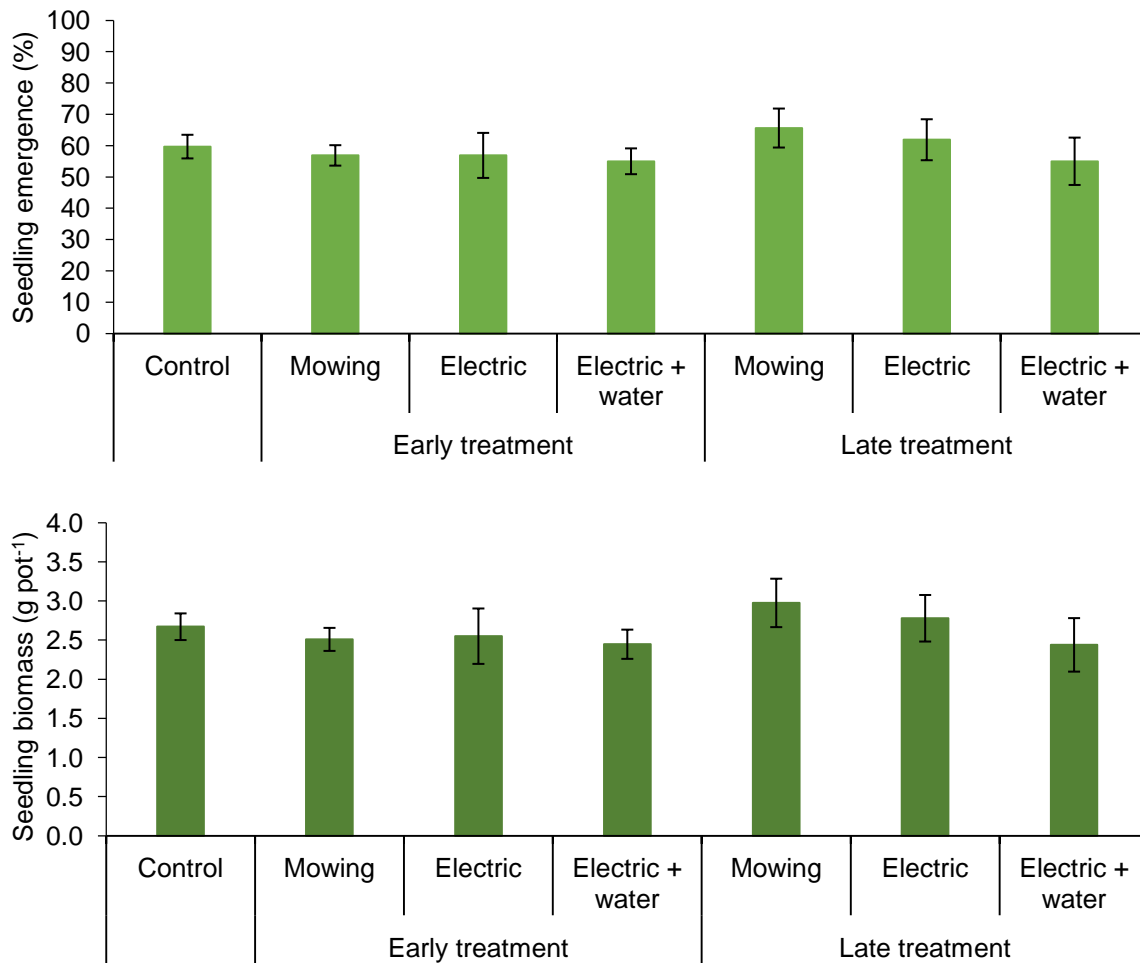


Figure 5. The emergence ($P: 0.808$, $LSD \text{ max-min}: 14.5$) and seedling biomass ($P: 0.746$, $LSD \text{ max-min}: 0.671$) of 20 lupin seeds sown in pots, obtained from plants from the control, and early or late mowing or electric weed control treatments (applied with or without water), in experiment three. Vertical bars indicate the standard error of 8 replications, or 16 replications for the control.