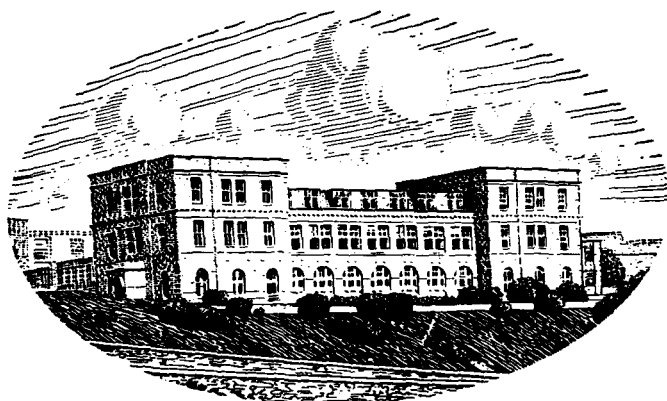


**JOURNAL OF THE
MARINE BIOLOGICAL ASSOCIATION
OF THE UNITED KINGDOM**

The Council of the Marine Biological Association wish it to be understood that they do not accept responsibility for the accuracy of statements published in this Journal, excepting when those statements are contained in an official report of the Council.

**JOURNAL OF THE
MARINE BIOLOGICAL
ASSOCIATION
OF THE UNITED KINGDOM**

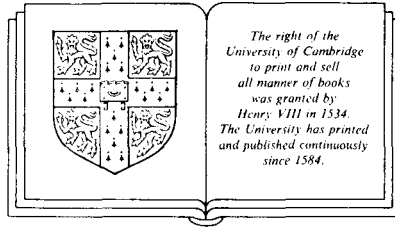


THE PLYMOUTH LABORATORY

VOLUME 64

1984

CAMBRIDGE UNIVERSITY PRESS
CAMBRIDGE
LONDON NEW YORK NEW ROCHELLE
MELBOURNE SYDNEY



**PUBLISHED BY
THE PRESS SYNDICATE OF THE UNIVERSITY OF CAMBRIDGE**

**The Pitt Building, Trumpington Street, Cambridge CB2 1RP
32 East 57th Street, New York, NY 10022, USA
10 Stamford Road Oakleigh, Melbourne 3166 Australia**

© Copyright Marine Biological Association of the U.K. 1985

Printed in Great Britain at the University Press, Cambridge

CONTENTS OF VOLUME 64

Number 1, pp. 1-250, 10 February 1984
 Number 2, pp. 251-495, 1 May 1984
 Number 3, pp. 497-741, 6 August 1984
 Number 4, pp. 743-1024, 6 November 1984

	PAGE
Report of the Council for 1983-84.	973
Income and Expenditure Account and Balance Sheet	1019
ALMADA-VILLELA, P. C.	
The effects of reduced salinity on the shell growth of small <i>Mytilus edulis</i>	171
<i>See also</i> MANLEY, GRUFFYDD and ALMADA-VILLELA	417
BAMBER, R. N.	
The benthos of a marine fly-ash dumping ground	211
BAMBER, R. N. and SPENCER, J. F.	
The benthos of a coastal power station thermal discharge canal	603
BARKER, M. F.	
<i>See</i> NICHOLS and BARKER	461
<i>See</i> NICHOLS and BARKER	471
BATTY, R. S., <i>see</i> BLAXTER and BATTY	441
BEST, A. C. G. and NICOL, J. A. C.	
Red pigment epithelium of fish eyes	909
BILLETT, D. S. M., <i>see</i> TYLER <i>et al.</i>	587
BLAXTER, J. H. S.	
Cupular growth in herring neuromasts	935
BLAXTER, J. H. S. and BATTY, R. S.	
The herring swimbladder: loss and gain of gas	441
BOLETZKY, S. VON, <i>see</i> WARD and BOLETZKY	955
BONE, Q., <i>see</i> MORRIS, MCCARTNEY and BONE	343
BOWDEN, N., <i>see</i> KNIGHT-JONES and BOWDEN	809
BOYLE, P. R. and KNOBLOCH, D.	
Male reproductive maturity in the octopus, <i>Eledone cirrhosa</i> (Cephalopoda: Octopoda)	573
Reproductive maturity in fresh and aquarium-held <i>Eledone cirrhosa</i> (Cephalopoda: Octopoda).	581
BRACE, R. C., <i>see</i> QUICKE and BRACE	531
BROERTJES, J. J. S., WAARD, P. DE and VOOGT, P. A.	
On the presence of vitellogenic substances in the starfish, <i>Asterias rubens</i> (L.)	261
BROWN, R. A.	
Geographical variations in the reproduction of the horse mussel, <i>Modiolus modiolus</i> (Mollusca: Bivalvia)	751
BURNELL, G. M., <i>see</i> RODHOUSE <i>et al.</i>	513
CLARIDGE, P. N. and POTTER, I. C.	
Abundance, movements and size of gadoids (Teleostei) in the Severn Estuary	771

	PAGE
CLARK, P., <i>see</i> WHEELER and CLARK	1
CORNER, E. D. S., <i>see</i> PRAHL <i>et al.</i>	317
COSTELLO, M. J., <i>see</i> MYERS and COSTELLO	279
CRANMER, G. J., DYER, M. F. and FRY, P. D.	
Further results from headline camera surveys in the North Sea	335
<i>See also</i> DYER <i>et al.</i>	667
CRISP, D. J. and LEWIS, A. H.	
Factors controlling cold tolerance and breeding in <i>Balanus balanoides</i>	125
<i>See also</i> EKARATNE and CRISP	183
<i>See also</i> GRUFFYDD, HUXLEY and CRISP	401
CROSS, T. F., <i>see</i> SOUTHGATE <i>et al.</i>	485
CRUMP, R. G., <i>see</i> EMSON and CRUMP	35
DEMONT, M. E. and O'DOR, R. K.	
The effects of activity, temperature and mass on the respiratory metabolism of the squid, <i>Illex illecebrosus</i>	535
DIGBY, P. S. B.	
Calcification in the shore crab, <i>Carcinus maenas</i> (L.): pH and the precipitation of carbonate from sea water and blood	233
DYER, M. F., CRANMER, G. J., FRY, P. D. and FRY, W. G.	
The distribution of benthic hydrographic indicator species in Svalbard waters, 1978–1981	667
<i>See also</i> CRANMER, DYER and FRY	335
EGLINTON, G., <i>see</i> PRAHL <i>et al.</i>	317
EKARATNE, S. U. K. and CRISP, D. J.	
Seasonal growth studies of intertidal gastropods from shell micro-growth band measurements, including a comparison with alternative methods	183
EMSON, R. H. and CRUMP, R. G.	
Comparative studies on the ecology of <i>Asterina gibbosa</i> and <i>A. phylactica</i> at Lough Ine	35
FLOWERDEW, M. W.	
Electrophoretic comparison of the Antipodean cirripede, <i>Elminius modestus</i> , with immigrant European populations	625
FORSBERG, T. E. V., <i>see</i> PRAHL <i>et al.</i>	317
FRY, P. D.	
<i>See</i> CRANMER, DYER and FRY	335
<i>See</i> DYER <i>et al.</i>	667
FRY, W. G., <i>see</i> DYER <i>et al.</i>	667
GAGE, J. D.	
On the status of the deep-sea echinoids, <i>Echinosigra phiale</i> and <i>E. paradoxa</i>	157
<i>See also</i> TYLER <i>et al.</i>	587
GALLANI, L., NIGRO, M. and PUCCINELLI, I.	
The chromosome complement of <i>Procerodes dohrni</i> (Tricladida: Maricola)	227
GEORGE, S. G., <i>see</i> PIRIE <i>et al.</i>	115
GIBBS, P. E.	
The population cycle of the bivalve <i>Abra tenuis</i> and its mode of reproduction	791

	PAGE
GORDON, J. D. M., <i>see</i> MAUCLINE and GORDON	657
GREEN, J. E., <i>see</i> LLEWELLYN, GREEN and KEARN	881
GRIFFITHS, D. K.	
<i>See</i> PINGREE and GRIFFITHS	889
<i>See</i> PINGREE, GRIFFITHS and MARDELL	99
GRUFFYDD, LL. D., HUXLEY, R. and CRISP, D. J.	
The reduction in growth of <i>Mytilus edulis</i> in fluctuating salinity regimes measured using laser diffraction patterns and the exaggeration of this effect by using tap water as the diluting medium	401
<i>See also</i> MANLEY, GRUFFYDD and ALMADA-VILLELA	417
HARA, S. and TAKAHASHI, E.	
Re-investigation of <i>Polyoeca dichotoma</i> and <i>Acanthoeca spectabilis</i> (Acanthoecidae: Choanoflagellida)	819
HARGREAVES, P. M.	
The distribution of Decapoda (Crustacea) in the open ocean and near-bottom over an adjacent slope in the northern North-east Atlantic Ocean during autumn 1979	829
HEALY, B. and O'NEILL, M.	
The life cycle and population dynamics of <i>Idotea pelagica</i> and <i>I. granulosa</i> (Isopoda: Valvifera) in south-east Ireland	21
HENSEY, M. P., <i>see</i> RODHOUSE <i>et al.</i>	513
HOLME, N. A.	
Fluctuations of <i>Ophiothrix fragilis</i> in the western English Channel	351
HUGHES, G. M.	
Measurement of gill area in fishes: practices and problems	637
HUI, E. and MOYSE, J.	
Complemental male in the primitive balanomorph barnacle, <i>Chionelasmus darwini</i>	91
HUXLEY, R., <i>see</i> GRUFFYDD, HUXLEY and CRISP	401
KEARN, G. C., <i>see</i> LLEWELLYN, GREEN and KEARN	881
KNIGHT-JONES, E. W., <i>see</i> LLEWELLYN and KNIGHT-JONES	919
KNIGHT-JONES, P. and BOWDEN, N.	
Incubation and scissiparity in Sabellidae (Polychaeta)	809
KNOBLOCH, D.	
<i>See</i> BOYLE and KNOBLOCH	573
<i>See</i> BOYLE and KNOBLOCH	581
LEE, J. B., <i>see</i> SUNDET and LEE	411
LEWIS, A. H., <i>see</i> CRISP and LEWIS	125
LLEWELLYN, J.	
The biology of <i>Isancistrum subulatae</i> n.sp., a monogenean parasitic on the squid, <i>Alloteuthis subulata</i> , at Plymouth	285
LLEWELLYN, J., GREEN, J. E. and KEARN, G. C.	
A check-list of monogenean (platyhelminth) parasites of Plymouth hosts	881
LLEWELLYN, L. C. and KNIGHT-JONES, E. W.	
A new genus and species of marine leech from British coastal waters	919
LOEBLICH, A. R., III, <i>see</i> MORRILL and LOEBLICH	939

	PAGE
LYTTON, D. G., <i>see</i> PIRIE <i>et al.</i>	115
McCARTNEY, M. J., <i>see</i> MORRIS, McCARTNEY and BONE	343
McGRATH, D., <i>see</i> MYERS and McGRATH	379
McMAHON, T., <i>see</i> RODHOUSE <i>et al.</i>	513
MADDOCK, L. and YOUNG, J. Z. Some dimensions of the angular acceleration receptor systems of cephalopods	55
MANLEY, A. R., GRUFFYDD, LL. D. and ALMADA-VILLELA, P. C. The effect of copper and zinc on the shell growth of <i>Mytilus edulis</i> measured by a laser diffraction technique	417
MARDELL, G. T., <i>see</i> PINGREE, GRIFFITHS and MARDELL	99
MASON, A. Z., SIMKISS, K. and RYAN, K. P. The ultrastructural localization of metals in specimens of <i>Littorina littorea</i> collected from clean and polluted sites	699
MAUCLINE, J. and GORDON, J. D. M. Feeding and bathymetric distribution of the gadoid and morid fish of the Rockall Trough	657
MOORE, P. G. The amphipod <i>Monoculodes gibbosus</i> (Crustacea) in British waters	271
MORRILL, L. C. and LOEBLICH, A. R., III Cell division and reformation of the amphiesma in the pelliculate dinoflagellate, <i>Heterocapsa niei</i>	939
MORRIS, R. J., McCARTNEY, M. J. and BONE, Q. The sterol chemistry of salps: the occurrence and distribution of saturated sterols	343
MOYSE, J., <i>see</i> HUI and MOYSE	91
MYERS, A. A. and COSTELLO, M. J. The amphipod genus <i>Aora</i> in British and Irish waters	279
MYERS, A. A. and McGRATH, D. A revision of the North-east Atlantic species of <i>Erichthonius</i> (Crustacea: Amphipoda) <i>See also</i> SOUTHGATE <i>et al.</i>	379 485
NAYLOR, E. and WILLIAMS, B. G. Phase-responsiveness of the circatidal locomotor activity rhythm of <i>Hemigrapsus edwardsi</i> (Hilgendorf) to simulated high tide	81
NICHOLS, D. and BARKER, M. F. A comparative study of reproductive and nutritional periodicities in two populations of <i>Asterias rubens</i> (Echinodermata: Asteroidea) from the English Channel Reproductive and nutritional periodicities in the starfish, <i>Marthasterias glacialis</i> , from Plymouth Sound	471 461
NICOL, J. A. C., <i>see</i> BEST and NICOL	909
NIGRO, M., <i>see</i> GALLEN, NIGRO and PUCCINELLI	227
O'DOR, R. K., <i>see</i> DeMONT and O'DOR	535
O'HARA, S. C. M., <i>see</i> PRAHL <i>et al.</i>	317
O'NEILL, M., <i>see</i> HEALY and O'NEILL	21
OTTWAY, B., <i>see</i> RODHOUSE <i>et al.</i>	513
PAGE, F. C. <i>Gruberella flavescens</i> (Gruber, 1889), a multinucleate lobose marine amoeba (Gymnamoebia)	303

	PAGE
PAIN, S. L., <i>see</i> TYLER <i>et al.</i>	587
PINGREE, R. D. and GRIFFITHS, D. K. Trapped diurnal waves on Porcupine and Rockall Banks	889
PINGREE, R. D., GRIFFITHS, D. K. and MARDELL, G. T. The structure of the internal tide at the Celtic Sea shelf break	99
PIRIE, B. J. S., GEORGE, S. G., LYTTON, D. G. and THOMSON, J. D. Metal-containing blood cells of oysters: ultrastructure, histochemistry and X-ray microanalysis	115
POTTER, I. C., <i>see</i> CLARIDGE and POTTER	771
PRAHL, F. G., EGLINTON, G., CORNER, E. D. S., O'HARA, S. C. M. and FORSBERG, T. E. V. Changes in plant lipids during passage through the gut of <i>Calanus</i>	317
PUCCINELLI, I., <i>see</i> GALLEN, NIGRO and PUCCINELLI	227
QUICKE, D. L. J. and BRACE, R. C. Evidence for the existence of a third, ecologically distinct morph of the anemone, <i>Actinia equina</i>	531
RAINER, S. F. <i>Nephtys pente</i> sp.nov. (Polychaeta: Nephtyidae) and a key to <i>Nephtys</i> from northern Europe	899
RODEN, C. M., <i>see</i> RODHOUSE <i>et al.</i>	513
RODHOUSE, D. M. Experimental fishing for the spider crab, <i>Maia squinado</i> : sea and laboratory trials	251
RODHOUSE, P. G., RODEN, C. M., BURNELL, G. M., HENSEY, M. P., MCMAHON, T., OTTWAY, B. and RYAN, T. H. Food resource, gametogenesis and growth of <i>Mytilus edulis</i> on the shore and in suspended culture: Killary Harbour, Ireland	513
RYAN, K. P., <i>see</i> MASON, SIMKISS and RYAN.	699
RYAN, T. H., <i>see</i> RODHOUSE <i>et al.</i>	513
SALVINI-PLAWEN, L. v. Notes on molluscan meiofauna from Plymouth.	497
SHAH, N. and SYRETT, P. J. Enzymes of purine metabolism in the diatom, <i>Phaeodactylum tricorutum</i>	557
The uptake of guanine and hypoxanthine by marine microalgae	545
SILVESTER, N. R. and SLEIGH, M. A. Hydrodynamic aspects of particle capture by <i>Mytilus</i>	859
SIMKISS, K., <i>see</i> MASON, SIMKISS and RYAN	699
SLEIGH, M. A., <i>see</i> SILVESTER and SLEIGH	859
SMITH, J. W. Larval ascaridoid nematodes in myopsid and oegopsid cephalopods from around Scotland and in the northern North sea	563
SMITH, T. B. Ultrastructure and function of the proboscis in <i>Melanella alba</i> (Gastropoda: Eulimidae)	503
SOUTHGATE, T., WILSON, K., CROSS, T. F. and MYERS, A. A. Recolonization of a rocky shore in S.W. Ireland following a toxic bloom of the dinoflagellate, <i>Gyrodinium aureolum</i>	485
SPENCER, J. F., <i>see</i> BAMBER and SPENCER	603

	PAGE
STOCK, J. H.	
Deep-water Pycnogonida of the INCAL, BIOGAS, GEOMANCHE and SAFARI cruises	743
SUNDET, J. H. and LEE, J. B.	
Seasonal variations in gamete development in the Iceland scallop, <i>Chlamys islandica</i>	411
SYRETT, P. J.	
See SHAH and SYRETT	545
See SHAH and SYRETT	557
TAKAHASHI, E., see HARA and TAKAHASHI	819
TAYLOR, A. C.	
Branchial ventilation in the burrowing crab, <i>Atelecyclus rotundatus</i>	7
THOMSON, J. D., see PIRIE <i>et al.</i>	115
TYLER, P. A., PAIN, S. L., GAGE, J. D. and BILLETT, D. S. M.	
The reproductive biology of deep-sea forcipulate seastars (Asteroidea: Echinodermata) from the N.E. Atlantic Ocean	587
VOOGT, P. A., see BROERTJES, WAARD and VOOGT	261
WAARD, P. DE, see BROERTJES, WAARD and VOOGT	261
WALKER, G. and YULE, A. B.	
Temporary adhesion of the barnacle cyprid: the existence of an antennular adhesive secretion	679
See also YULE and WALKER	147
See also YULE and WALKER	429
WARD, P. D. and BOLETZKY, S. VON	
Shell implosion depth and implosion morphologies in three species of <i>Sepia</i> (Cephalopoda) from the Mediterranean Sea	955
WETHEY, D. S.	
Spatial pattern in barnacle settlement: day to day changes during the settlement season	687
WHEELER, A. and CLARK, P.	
New records for the occurrence of <i>Crenilabrus bailloni</i> (Osteichthyes: Perciformes: Labridae) in the waters of northern Europe	1
WILLIAMS, B. G., see NAYLOR and WILLIAMS	81
WILSON, K., see SOUTHGATE <i>et al.</i>	485
YOUNG, J. Z., see MADDOCK and YOUNG	55
YULE, A. B. and WALKER, G.	
The adhesion of the barnacle, <i>Balanus balanoides</i> , to slate surfaces	147
The temporary adhesion of barnacle cyprids: effects of some differing surface characteristics	429
See also WALKER and YULE	679
ZATTA, P.	
Zinc transport in the haemolymph of <i>Carcinus maenas</i> (Crustacea: Decapoda)	801

SHORT NOTES

BAXTER, J. M.	
The incidence of <i>Polydora ciliata</i> and <i>Cliona celata</i> boring the shell of <i>Patella vulgata</i> in Orkney	728
BERRYMAN, J.	
Predation of <i>Sagartiogeton laceratus</i> upon <i>Aurelia aurita</i> in shallow water	725

BINYON, J. A re-appraisal of the fluid loss resulting from the operation of the water vascular system of the starfish, <i>Asterias rubens</i>	726
COOMBS, S. H. and MITCHELL, C. E. A note on the development of eggs and larvae of the bogue, <i>Boops boops</i>	729
ECONOMOU, A. N. Larval fish east of the Shetland Islands, May 1978 and May 1979	737
FORSTER, G. R. Observations on the bottom fauna near Plymouth during a dinoflagellate bloom in 1982	732
McKENZIE, J. D. and PICTON, B. E. A note on feeding in <i>Leptopentacta</i> (= <i>Cucumaria</i>) <i>elongata</i>	727
MATTACOLA, A. D., MADDOCK, L. and DENTON, E. J. Weights and lengths of <i>Sepia officinalis</i> trawled by the Laboratory's boats, 1978–1983	735
MITCHELL, J. B. and DESSI, J. A note on the distribution of metacercariae of <i>Maritrema arenaria</i> in <i>Balanus balanoides</i> at a site on the north-east coast of England	734
MOORE, P. G. <i>Acanthonotozoma serratum</i> , an Arctic amphipod new to Britain	731
MORRIS, R. J. and CARRE, C. Observation on the biochemical composition of an unusual diatom bloom	721
PRANDLE, D. Monthly-mean residual flows through the Dover Strait, 1949–1980	722
SCHMIDT, G. H. Seasonality of the association between the ascidian, <i>Molgula complanata</i> , and the commensal copepod, <i>Doropygus pulex</i>	724

CORRIGENDA

- Page 109, line 9, for similar read sawtoothed.
 Page 110, line 14, for results read can result.
 Page 177, Fig. 5 legend, line 3, for 26.5 read 25.6.
 Page 524, line 1, for June/July read May/June.
 Page 737, Table 1, column 8, line 9, for 14 read 4.
 Page 738, line 19, for *aeglefinius* read *aeglefinus*.
 Page 738, line 33, for *gunellus* read *gunnellus*.
 Page 919, line 5, for painted read small-eyed.

SUBJECT INDEX

Behaviour

- Branchial ventilation in burrowing crab, 7–20
- Tidal phase rhythms in crabs, 81–90

Biochemistry

- Fate of ingested lipids in *Calanus*, 317–334
- Lipids of diatom bloom, 721–722
- Purine metabolism by microalgae, 545–556, 557–562
- Sterols in salps, 343–349
- Vitellogenin substances in starfish, 261–269
- Zinc transport in crab haemolymph, 801–807

Breeding, Rearing and Fecundity

- Early development of *Boops*, 729–730
- Gametogenesis in Iceland scallop, 411–416
- Idotea* populations off south-east Ireland, 21–33
- Reproduction of *Abra tenuis*, 791–800
- Reproduction of the horse mussel, 751–770
- Reproduction in polychaetes, 809–818
- Reproduction in seastars, 587–601
- Reproductive maturity in squid, 573–579, 581–585
- Subtidal starfish populations, 461–470, 471–484

Comparative Anatomy

- Complemental male barnacle, 91–97
- Gill area in fishes, 637–655
- Morphometric factors in echinoids, 157–170
- Statocyst morphometry in cephalopods, 55–79

Ecology and Distribution

- Amphipod new to Scotland, 731–732
- Asterina* zonation in Lough Ine, 35–53
- Benthic indicator species, 667–677
- Benthos of ash dumping ground, 211–226
- Boring species on limpet shells, 728–729
- Crenilabrus bailloni* in north European waters, 1–6
- Deep-water pycnogonids, 743–749
- Effect of toxic bloom off Plymouth, 732–733
- Fish larvae taken east of Shetland, 737–738
- North Atlantic decapods, 829–857
- North Sea benthos, 335–342
- Patterns of barnacle settlement, 687–698
- Plymouth meiofauna, 497–502
- Shore recolonization after toxic red tide, 485–492

Feeding and Nutrition

- Coelenterate predation, 725
- Diet of deep fish in Rockall Trough, 657–665
- Mytilus* in Killary Harbour, 513–529
- Particle capture by *Mytilus*, 859–879
- Suspension feeding of holothurian, 727

Genetics

- Chromosome studies in *Procerodes*, 227–231

- Enzyme characterization of immigrant barnacles, 625–635
- Morphs of *Actinia equina*, 531–534

Growth and Maturation

- Gametogenesis in Iceland scallop, 411–416
- Growth of *Sepia* in sea off Plymouth, 735–737
- Mytilus* growth in the wild, 513–529
- Reproductive maturity in squid, 573–579, 581–585
- Shell growth in gastropods, 183–210

New Species

- Acanthocorbis* gen.nov., 826
- Brumptiana lineata* gen.nov., sp.nov., 919–934
- Erichthonius stephenseni* sp.nov., 398
- Isancistrum subulatae* sp.nov., 285–302
- Nephtys pente* sp.nov., 901

Parasitology

- Infection of barnacles on north-east coast of England, 734–735
- Monogean fish parasites, check-list, 881–887
- Monogean parasites of squid, 285–302
- Nematodes in squid, 563–572
- New leech found on ray, 919–934

Phycology

- Cell division in dinoflagellate, 939–953
- Structure and taxonomy of Choanoflagellida, 819–827

Physical Oceanography

- Internal tide model for Celtic Sea, 99–113
- Residual flow in Dover Strait, 722–724
- Trapped diurnal waves, 889–897

Physiology and Experimental Biology

- Adhesion of barnacles, 147–156, 429–439, 679–686
- Branchial ventilation in burrowing crab, 7–20
- Calcification in shore crabs, 233–248
- Cold tolerance in barnacles, 125–145
- Cupula growth rate, 935–938
- Effect of salinity on mussel growth, 171–182, 401–409
- Experimental spider crab fishery, 251–259
- Gas exchange in herring swimbladder, 441–459
- Mytilus* growth, effect of Cu and Zn, 417–427
- Oxygen consumption of squid, 535–543
- Red pigment epithelium of fish eye, 909–917
- Shell growth in gastropods, 183–210
- Shell implosion depth of cuttlefish, 955–966
- Water loss from tube feet, 726

INDEX

Population Studies

- Abra tenuis* in south-west England, 791–800
- Ascidian–copepod association, 724–725
- Benthos of ash dumping ground, 211–226
- Benthos of power station outflow, 603–623
- Brittle-stars in England Channel, 351–378
- Gadoids of the Severn Estuary, 771–790
- Isopod populations off south-east Ireland, 21–33
- Mytilus* in Killary Harbour, 513–529
- Subtidal starfish populations, 461–470, 471–484

Structure and Histology

- Metal deposits in cells of *Littorina*, 699–720
- Metalliferous haemocysts in oysters, 115–123

- Multinucleate marine amoeba, 303–316
- Proboscis of *Melanella*, 503–512

Taxonomy and Life History

- Amphipod, *Monoculodes gibbosus*, 271–278
- Erichthonius* spp., Amphipoda, 379–400
- Isancistrum* sp. parasitic on squid, 285–302
- Monogenean fish parasites, check-list, 881–887
- Nephtys* of N. Europe, key, 899–907
- Phylogenetic relationships in barnacles, 96
- Phylogenetic relationships in *Echinosisgra* spp., 157–170
- Two British amphipods, 279–283

THE MARINE BIOLOGICAL ASSOCIATION OF THE UNITED KINGDOM

THE ASSOCIATION was founded in 1884 to promote accurate researches leading to the advancement of zoological and botanical science and to an increase in our knowledge of the food, life, conditions and habits of British fishes. The work of the Association is controlled by a Council elected annually by its subscribing members.

Professor T. H. Huxley took the chair at the initial meeting held in the rooms of the Royal Society and was elected the first President. Among those present were Sir John Lubbock (afterwards Lord Avebury), Sir Joseph Hooker, Professor H. N. Moseley, Mr G. J. Romanes, and Sir E. Ray Lankester who, after Professor Huxley, was for many years president of the Association. It was decided to build a laboratory at Plymouth, where a rich and varied fauna is found.

The Plymouth Laboratory was opened in June 1888, and, since that date, considerable additions have been made to the buildings, including a library, lecture-hall, and extensive laboratory accommodation with up-to-date equipment. Additional sea-water reservoirs have also been built, and an aquarium, modernized in 1959, opened to the public.

Since its foundation the Association has been supported by subscriptions and donations from private members, universities, learned societies, the Fishmongers' Company and other public bodies. For some time past, however, the main financial support for the work of the Plymouth Laboratory has come from Government funds, and since 1965 the Laboratory has been grant-aided through the Natural Environment Research Council.

The Marine Biological Association, under the direction of its Council, undertakes research in all branches of marine science and the main results are published in this journal. Accounts of the laboratory and aquarium are to be found in Vol. 27 (p. 761), Vol. 39 (p. 391) and Vol. 43 (p. 281), and summaries of the activities and research of the Association are given annually in the Report of the Council in the November issue of the Journal.

The laboratory is open throughout the year and its work is carried out by a fully qualified research staff under the supervision of the Director. The names of the members of the staff will be found on the inner page of the front cover. Accommodation is available for British and foreign scientific workers who wish to carry out independent research in all branches of marine science. Arrangements are made for courses for advanced students, and marine animals and plants are supplied to educational institutions.

Work at sea is undertaken by three research vessels and by a motor boat, and these also collect the specimens required in the laboratory.

TERMS OF MEMBERSHIP

	£
Annual Members, receiving the Journal . . . per annum	15.00
Annual Members, without the Journal . . . per annum	3.00
Founders	100.00
Governors	500.00

Annual subscriptions become due on 1 January.

Members of the Association have the following rights and privileges: they elect annually the Officers and Council; they are entitled to receive the Journal of the Association at a reduced rate; they are admitted to view the laboratory at Plymouth; they have the first claim to rent a place in the laboratory for research, with use of tanks, boats, etc.; they have the privilege of occupying a table for one week in each year free of charge; and they have access to the books in the library at Plymouth during working hours.

The Commissioners of Inland Revenue have approved the Association for the purposes of Section 16, Finance Act, 1958, and that the whole of the annual subscription paid by a member who qualifies for relief under the section will be allowable as a deduction from his emoluments assessable to income tax under Schedule E.

All correspondence should be addressed to the Director, The Laboratory, Citadel Hill, Plymouth, PL1 2PB.

CONTENTS

	PAGE
WHEELER, A. and CLARK, P. New records for the occurrence of <i>Crenilabrus bailloni</i> (Osteichthyes: Perciformes: Labridae) in the waters of northern Europe	1
TAYLOR, A. C. Branchial ventilation in the burrowing crab, <i>Atelecyclus rotundatus</i>	7
HEALY, B. and O'NEILL, M. The life cycle and population dynamics of <i>Idotea pelagica</i> and <i>I. granulosa</i> (Isopoda: Valvifera) in south-east Ireland	21
EMSON, R. H. and CRUMP, R. G. Comparative studies on the ecology of <i>Asterina gibbosa</i> and <i>A. phylactica</i> at Lough Ine	35
MADDOCK, L. and YOUNG, J. Z. Some dimensions of the angular acceleration receptor systems of cephalopods	55
NAYLOR, E. and WILLIAMS, B. G. Phase-responsiveness of the circatidal locomotor activity rhythm of <i>Hemigrapsus edwardsi</i> (Hilgendorf) to simulated high tide	81
HUI, E. and MOYSE, J. Complemental male in the primitive balanomorph barnacle, <i>Chionelasmus darwini</i>	91
PINGREE, R. D., GRIFFITHS, D. K. and MARDELL, G. T. The structure of the internal tide at the Celtic Sea shelf break	99
PIRIE, B. J. S., GEORGE, S. G., LYTTON, D. G. and THOMSON, J. D. Metal-containing blood cells of oysters: ultrastructure, histochemistry and X-ray microanalysis	115
CRISP, D. J. and LEWIS, A. H. Factors controlling cold tolerance and breeding in <i>Balanus balanoides</i>	125
YULE, A. B. and WALKER, G. The adhesion of the barnacle, <i>Balanus balanoides</i> , to slate surfaces	147
GAGE, J. D. On the status of the deep-sea echinoids, <i>Echinisgra phiale</i> and <i>E. paradoxa</i>	157
ALMADA-VILLELA, P. C. The effects of reduced salinity on the shell growth of small <i>Mytilus edulis</i>	171
EKARATNE, S. U. K. and CRISP, D. J. Seasonal growth studies of intertidal gastropods from shell micro-growth band measurements, including a comparison with alternative methods	183
BAMBER, R. N. The benthos of a marine fly-ash dumping ground	211
GALLENI, L., NIGRO, M. and PUCCINELLI, I. The chromosome complement of <i>Procerodes dohrni</i> (Tricladida: Maricola)	227
DIGBY, P. S. B. Calcification in the shore crab, <i>Carcinus maenas</i> (L.): pH and the precipitation of carbonate from sea water and blood	233
BOOK NOTICES	249

© Copyright by the Marine Biological Association of the U.K. 1984

The subscription price of volume 64, 1984 of the Journal to non-members of the Association is £94.00 net a volume of four parts, post free, or US \$240.00 in U.S.A. and Canada, payable in advance. Single parts cost £27.00 (US \$70.00 in U.S.A. and Canada) plus postage. Subscriptions may be sent to any bookseller or to Cambridge University Press, The Edinburgh Building, Shaftesbury Road, Cambridge CB2 2RU, or in the U.S.A. and Canada, to Cambridge University Press, 32 East 57th Street, New York, 10022. All orders must be accompanied by payment.

CAMBRIDGE UNIVERSITY PRESS

THE PITT BUILDING, TRUMPINGTON STREET, CAMBRIDGE CB2 1RP

32 EAST 57TH STREET, NEW YORK, N.Y. 10022

Printed in Great Britain at the University Press, Cambridge