

Asylum and Mental Hospital Reports for 1918-19 received :

Brighton County.
Carmarthen, Cardigan and Pembroke.
Down District.
Essex and Colchester.
Hants.
Monmouthshire.
Retreat, York.
Roxburgh District.
Salop and Borough of Wenlock.

Also the following Reports :

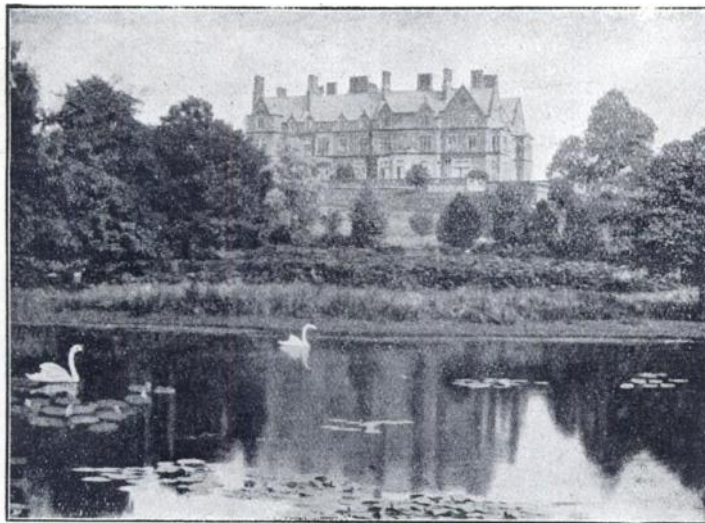
Neurological Institute of New York, 1918.
Craig Colony for Epileptics, 1919.
Medical Research Committee: "Influence of Alcohol on
Manual Work, etc.," 1919.
Metropolitan Asylums Board, 1918.
Board of Control for Scotland, 1918.
State Hospital for the Insane, Warren, Pennsylvania, 1918.
Lunacy Reports, Burma, 1918.
Egypt—Lunacy Division, 1918.

The following pamphlets have been received :

Étude-critique sur l'Évolution des Idées relatives à la nature des Hallucinations
Vraies, *Dr. Raoul Mourgue*.
El Psicoanálisis, par *Honorio F. Delgado*.

BOREATTON PARK.

Founded by the late W. H. O. SANKEY, M.D., F.R.C.P., for the reception of a limited number of ladies and gentlemen mentally afflicted, and now conducted on the same lines by his son, E. H. O. SANKEY, M.A., M.B., B.C.Cantab.



The house, a first-class country Mansion, specially adapted for its purpose, stands about 400 ft. above the sea and commands magnificent views of Welsh mountain scenery.

The Gardens slope to the West, and lead to the Deer Park, one of the oldest in the kingdom.

There is fishing both for trout and coarse fish in the pools in the Deer Park, and the right of fishing in about 5 miles of the River Perry is leased.

There are Hot Houses and Orchard House.

Private Golf Course of 18 holes, Tennis Courts, and Croquet Lawns.

So far as possible the patients of both sexes take their meals and associate at all times with the family of the Superintendent, the object being to make the house as much as possible like an ordinary country house.

Arrangements can be made for friends of the Patients to reside in the house should they desire to do so.

There is good stable accommodation, and Horses, Carriages and Motor are provided.

For further particulars apply---

Dr. SANKEY, Boreatton Park, Baschurch, Salop.

Ideal for Children

Allenburys' EMULSION

Cod-Liver Oil & Hypophosphites

For delicate children Cod-Liver Oil is of great value. It provides an easily assimilable fat food for those who are especially prone to colds, and does much to keep up body temperature under severe winter conditions. In 'Allenburys' Emulsion only the purest oil is used. It is quite tasteless and comes from our own factories at Lofoten and Sondmor, Norway, at which Allen & Hanburys have been actual producers for over half a century.

Sound keeping qualities.

ALLEN & HANBURYS LTD
Lombard Street, LONDON
West End House, 7, VERE ST. W.1.



BORDERLAND PATIENTS.

SOUTH BEACON

**Hadlow Down,
Nr. Uckfield, Sussex.**

ESTABLISHED 1892.

Telegrams: "Hadlow Down."

Station: Buxted (L.B. & S.C.R.)

□
Outdoor
Occupation
a Speciality.
□



□
The usual
Recreations
of a Country
House.
□

**For the reception of 15 gentlemen requiring
rest and quietness, but who are not
ill enough for certificates.**

Terms from 5 Guineas per week.

Full particulars from :: :: PHILIP H. HARMER.

EPILEPSY

Is so uniformly and so remarkably benefited by the use of

GELINEAU'S DRAGEES

(Pot.-Brom.; Antim.-Arsen.; Picrotoxine)

that no case should be considered hopeless until these Dragees have been thoroughly tried. RELIEF—AND A GREAT DEAL MORE—are usually obtained even when routine treatment fails completely.

GELINEAU'S DRAGEES

are successfully prescribed by leading Physicians, and are used in Hospitals and Epileptic Colonies. *Their use is also indicated in the nervous and painful crises of Menstruation and in the varying manifestations of Shell Shock.*

In tins of 50 and 150. Full particulars from the general Agents for the United Kingdom:

WILCOX, JOZEAU & Co., 49, Haymarket, London, S.W. 1.

A. K. Co.

ALWAYS USE

REFLEX

FLOOR POLISH.

REQUIRES NO MIXING WHATEVER.

Brilliantly Polishes Floors, Linoleums, Floorcloths, &c.

Economical, Cleanly, Healthful; Maximum of Lustre for Minimum of Labour.

GEO. T. COX & SONS, Ltd.,

31, KING WILLIAM STREET, LONDON BRIDGE, E.C.

This Polish is specially adapted for use in Public Institutions and other large establishments. Samples Free on application