

Access
leading
journals in
your subject

Cambridge Core

Explore today at [cambridge.org/core](https://www.cambridge.org/core)

Cambridge Core



CAMBRIDGE
UNIVERSITY PRESS

CONTENTS

Opinion Paper

Lionch, P., Hoffmann, G., Bodas, R., Mirbach, D., Verwer, C. and Haskell, M. J.
Opinion paper: Measuring livestock robustness and resilience: are we on the right track? 667

Breeding and genetics

Gicquel, E., Boettcher, P., Besbes, B., Furre, S., Fernández, J., Danchin-Burge, C., Berger, B., Baumung, R., Feijóo, J. R. J. and Leroy, G.
Impact of conservation measures on demography and genetic variability of livestock breeds 670

Tortoreau, F., Marie-Etancelin, C., Weisbecker, J.-L., Marcon, D., Bouvier, F., Moreno-Romieux, C. and François, D.
Genetic parameters for feed efficiency in Romane rams and responses to single-generation selection 681

Hollema, B. L., Zwiars, S. and Hermesch, S.
Genetic parameters for haemoglobin levels in sows and piglets as well as sow reproductive performance and piglet survival 688

Zhang, J., Song, H., Zhang, Q. and Ding, X.
Assessment of relationships between pigs based on pedigree and genomic information 697

Nutrition

Elokil, A. A., Magdy, M., Melak, S., Ishfaq, H., Bhuiyan, A., Cui, L., Jamil, M., Zhao, S. and Li, S.
Faecal microbiome sequences in relation to the egg-laying performance of hens using amplicon-based metagenomic association analysis 706

Lambertz, C., Leopold, J., Damme, K., Vogt-Kaute, W., Ammer, S. and Leiber, F.
Effects of a riboflavin source suitable for use in organic broiler diets on performance traits and health indicators 716

Remus, A., Hauschild, L. and Pomar, C.
Simulated amino acid requirements of growing pigs differ between current factorial methods 725

Neves, A. L. A., Chen, Y., Lê Cao, K.-A., Mandal, S., Sharpton, T. J., McAllister, T. and Guan, L. L.
Taxonomic and functional assessment using metatranscriptomics reveals the effect of Angus cattle on rumen microbial signatures 731

Iannaccone, M., Elgendy, R., Ianni, A., Martino, C., Palazzo, F., Giantin, M., Grotta, L., Dacasto, M. and Martino, G.
Whole-transcriptome profiling of sheep fed with a high iodine-supplemented diet 745

Krizsan, S. J., Pang, D., Fatehi, F., Rinne, M. and Huhtanen, P.
Metabolisable energy of grass and red clover silages fed to sheep at maintenance level 753

Amorim, T. R., Silva, A. L., Ladeira, M. M., Chizzotti, M. L., Cunha, C. S., Machado Neto, O. R., Carvalho, J. R. R., Corte, R. R. P. S., Mueller, L. F., Pereira, A. S. C. and Marcondes, M. I.
Nitrogen metabolism and protein requirements for maintenance of growing Red Norte bulls 763

Herremans, S., Decruyenaere, V., Cantalapiedra-Hijar, G., Beckers, Y. and Froidmont, E.
Effects of hydrolysable tannin-treated grass silage on milk yield and composition, nitrogen partitioning and nitrogen isotopic discrimination in lactating dairy cows 771

Penadés, M., Arnau-Bonachera, A., Selva, L., Viana, D., Larsen, T., Corpa, J. M., Pascual, J. J. and Saviotto, D.
Early deviations in performance, metabolic and immunological indicators affect stayability in rabbit females 780

Wang, L. X., Zhu, F., Li, J. Z., Li, Y. L., Ding, X. Q., Yin, J., Xiong, X. and Yang, H. S.
Epidermal growth factor promotes intestinal secretory cell differentiation in weaning piglets via Wnt/ β -catenin signalling 790

Rosales Nieto, C. A., Mantey, A., Makela, B., Byrem, T., Ehrhardt, R. and Veiga-Lopez, A.
Shearing during late pregnancy increases size at birth but does not alter placental endocrine responses in sheep 799

López-Mazz, C., Baldi, F., Quintans, G., Kenyon, P. R., Correa, O., Regueiro, M., Álvarez-Oxley, A. and Banchemo, G. E.
Effect of early shearing during gestation on the productive and reproductive behavior of female sheep offspring in their first 18 months of age 807

Welfare, Behaviour and Health Management

Buijs, S., Nicol, C. J., Booth, F., Richards, G. and Tarlton, J. F.
Light-based monitoring devices to assess range use by laying hens 814

Kobek-Kjeldager, C., Moustsen, V. A., Theil, P. K. and Pedersen, L. J.
Effect of litter size, milk replacer and housing on production results of hyper-prolific sows 824

Livestock Farming Systems

O'Brien, D., Herron, J., Andurand, J., Caré, S., Martínez, P., Migliorati, L., Moro, M., Pirlo, G. and Dollé, J.-B.
LIFE BEEF CARBON: a common framework for quantifying grass and corn based beef farms' carbon footprints 834

Méndez, M. N., Chilibroste, P. and Aguerre, M.
Pasture dry matter intake per cow in intensive dairy production systems: effects of grazing and feeding management 846

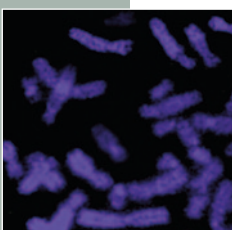
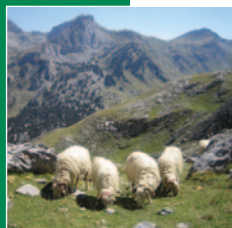
Quality of Animal Products

Prache, S., Martin, B. and Coppa, M.
Review: Authentication of grass-fed meat and dairy products from cattle and sheep 854

Knight, M. I., Butler, K. L., Slocombe, L. L., Linden, N. P., Raeside, M. C., Burnett, V. F., Ball, A. J., McDonagh, M. B. and Behrendt, R.
Reducing the level of nutrition of twin-bearing ewes during mid to late pregnancy produces leaner prime lambs at slaughter 864

da Costa, M. B., Cônsolo, N. R. B., Silva, J., Buarque, V. L. M., Padilla, A. R. H., Coutinho, I. D., Barbosa, L. C. G. S., Colnago, L. A., Silva, S. L. and Saran Netto, A.
Performance, carcass traits and serum metabolomic profile of Nelore males with different genetic potential for post-weaning growth 873

Volek, Z., Uhlířová, L. and Žita, L.
Narrow-leaved lupine seeds as a dietary protein source for fattening rabbits: a comparison with white lupine seeds 881



Cambridge Core

For further information about this journal
please go to the journal web site at:
[cambridge.org/animal](https://doi.org/10.1017/S1751731120000129)



MIX
Paper from
responsible sources
FSC® C007785

CAMBRIDGE
UNIVERSITY PRESS