

UCLA STUDENT CHAPTER

In a year of milestones for the MRS, one of the most far-reaching of 1982's accomplishments is the establishment of the first student chapter, at the University of California at Los Angeles. Since its organizational meeting in February, the chapter has adopted a constitution and by-laws, sponsored events to make itself known on campus, initiated formal affiliation with the Society and recruited into its ranks about half the undergraduate students in the Department of Materials Science and Engineering.

How it came about

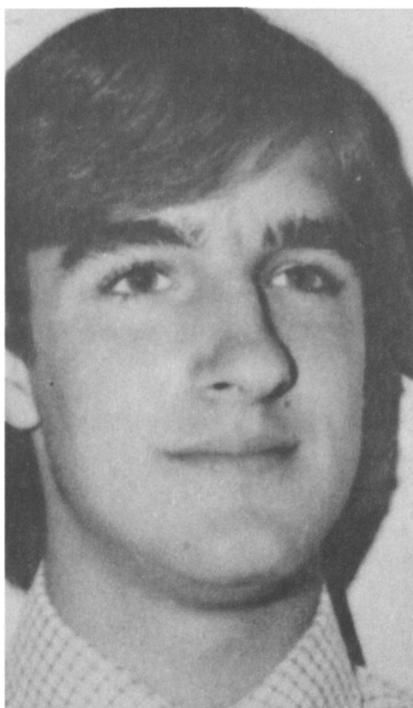
The Society's leadership had recognized the need for student affiliates, and about a year ago Rustum Roy and King Tu discussed with Prof. J.D. McKenzie, chairman of UCLA's Materials Science and Engineering Department, whether a chapter might be formed among his students.

The timing was fortuitous. One of McKenzie's colleagues, Prof. Alfred S. Yue, enthusiastically agreed to serve as faculty adviser to such a group. And an energetic undergraduate anxious to become more active in professional affairs and frustrated by a lack of suitable organizations to affiliate with went to McKenzie for his advice. "Prof. McKenzie suggested that I speak with Prof. Yue," said the student, Edward J.A. Pope, "and it turned out [the MRS] was the organization I was looking for."

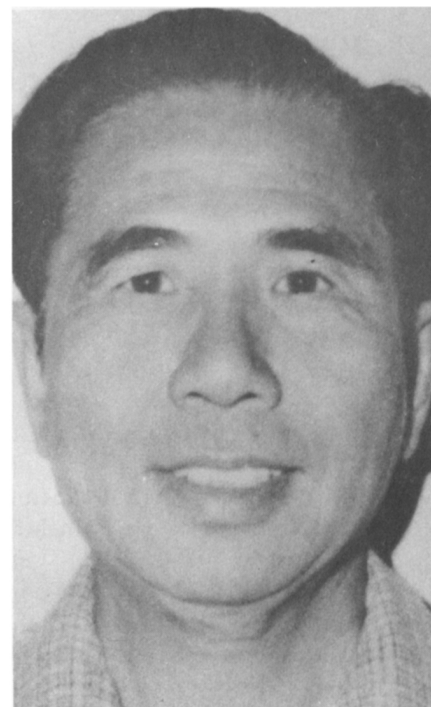
Pope, whose interest is in glass, ceramics and deposited material, had developed his skills as an organizer in student government. Having found a group that needed to exist, he created it, and now serves as its president.

The chapter's goals

Pope said he and the other 25 students, most of them undergraduates, were attracted to the MRS because of its emphasis on the interdisciplinary approach to science



EDWARD POPE



ALFRED YUE

and engineering. It also offers them the opportunity to advance themselves in their careers through publications, meetings, contacts and the other aspects of the professional flow of information.

Aside from recruitment -- always a fledgling organization's chief task -- Pope said the UCLA chapter will focus on stimulating this information flow on campus, notably through inviting prominent materials scientists and engineers to visit for lectures, seminars, symposia and other activities. During UCLA's annual Engineers Week, the MRS student chapter wants to arrange for industrial exhibits of materials' applications. Ultimately, the UCLA chapter hopes to foster the creation of other chapters, first in Southern California and later at universities wherever materials are studied. Pope expects those studies to prosper in coming years, saying, "I believe the most important aspect of engineering to concentrate on right now is improving our materials by

technology and technique."

UCLA membership

The members of the UCLA student chapter are:

*James D. Barrie
Arnold Goldman
Rick Ellis
Danny Halverson
Keith Kadokura
Brian Kim
Diane Krause
Sung-Min Lim
Greg Moore
Alana M. Nakata
Terry Nieman
Ramona Pond
Edward Pope
Timothy Shumate
Michael Steele
Victoria Tellkamp
Fuding Ma
Steven Mack
Susan M. Griep
Tetsuro Horiuchi
Beth Steckler
John C. Marcin
Chris Schilling
Patricia Flockhart*