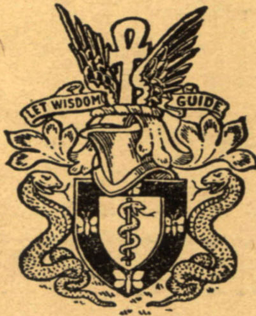


VOL. XCVIII, NO. 412

# THE JOURNAL OF MENTAL SCIENCE

(THE BRITISH JOURNAL OF PSYCHIATRY)



BY AUTHORITY OF  
THE ROYAL MEDICO-PSYCHOLOGICAL ASSOCIATION

EDITOR-IN-CHIEF

**G. W. T. H. FLEMING**

CO-EDITORS

**Alexander Walk and P. K. McCowan**

AND WITH THE ASSISTANCE OF

<b>E. D. Adrian</b>	<b>F. L. Golla</b>
<b>W. Ross Ashby</b>	<b>C. J. McCarthy</b>
<b>Sir F. C. Bartlett</b>	<b>Alfred Meyer</b>
<b>Sir Hugh Cairns</b>	<b>Lionel S. Penrose</b>
<b>W. E. le Gros Clark</b>	<b>A. A. W. Petrie</b>
<b>S. M. Coleman</b>	<b>Derek Richter</b>
<b>C. J. C. Earl</b>	<b>E. T. O. Siater</b>
<b>Sir A. Fleming</b>	

LONDON

**J. & A. CHURCHILL, LTD**

Published Four times Yearly Twelve Shillings and Sixpence net

## THE JOURNAL OF MENTAL SCIENCE

Communications on general editorial matters, including MSS. for publication, books for review and other printed matter, and communications regarding the *Epitome* section, including journals to be abstracted, should be sent to the **Editor-in-Chief, Barnwood House, Gloucester.**

Communications and inquiries regarding sales should be addressed to the Publishers, **Messrs. J. & A. CHURCHILL, Ltd., 104, Gloucester Place, Portman Square, London, W.1;** and those regarding Advertisements to the **Editor-in-Chief, Barnwood House, Gloucester.** Phone: Gloucester 66292.

---

### THE ROYAL MEDICO-PSYCHOLOGICAL ASSOCIATION.

#### PUBLICATIONS.

From MESSRS. ADLARD & SON, LTD.,  
Bartholomew Press, Dorking, Surrey.

**Enquiry (History) Form**, for use in Mental Hospitals. In three sizes. Prices and specimen forms on application.

From MESSRS. J. & A. CHURCHILL, LTD.,  
104 Gloucester Place, W. 1

**"The Journal of Mental Science."** Published four times a year. Price 12/6. Postage extra.

From MESSRS. BAILLIÈRE, TINDALL & COX,  
8 Henrietta Street, W.C. 2

**"Handbook for Mental Nurses."** 8th edn. In preparation.

**"Manual for Mental Deficiency Nurses."** 1931. Price 6/6 net.

**"Occupational Therapy."** Addendum to "Handbook." 1938. Price 6d.

From the REGISTRAR, Southfield, Shipton Road, York.

**"Regulations and Rules for the Nursing Examinations."** Revised, 1938. Price 9d. each. Postage 1d.

**"Examination Papers, 1928-38."** Price 9d. each. Postage 1d.

**"Regulations for the D.P.M. of the R.M.P.A."**

From the SECRETARY, 11 Chandos Street, W. 1.

**The Charter and By-Laws of the Association.** Price 2/- Postage 1½d.

## Mental and Nervous Disorders

● *St. John of God Hospital is beautifully situated between the Dublin mountains and the sea, 5 miles from the city, and surrounded by its own pleasantly wooded and extensive grounds*



Every form of modern treatment. Electrical Convulsive Therapy (with Curare if necessary), Insulin Coma Unit, Modified Insulin, Prolonged Narcosis, Psycho-Therapy, Prefrontal Leucotomy, Occupational Therapy, Recreational Therapy, Staff of Regularly Visiting Consultants.

Fully-trained Nursing Staff of Brothers of St. John of God, Dietician, Resident Chaplain. Male Patients only. Terms on application.

Address enquiries to: P. F. O'BRIEN, M.B., B.Ch.,  
B.A.O., D.P.M. Resident Medical Superintendent.

**St. John of God**  
*Hospital*

**St. John of God Hospital, Stillorgan, Dublin**

Phone: 82043-855751

## WYKE HOUSE, ISLEWORTH

MIDDLESEX

Tel. EALing 7000

A Private Hospital for individual treatment of all forms of Nervous and Mental Illness, including Alcoholism. Uncertified and certified patients are admitted and particular attention is given to the needs of the aged. This well-known Home for Men and Women is surrounded by attractive and secluded grounds, and all well-tried modern treatments are available.

DR. H. PULLAR-STRECKER

DR. G. W. SMITH, O.B.E.

## MENTAL HOSPITALS, INSTITUTIONS, HOMES, ETC.

**CHEADLE ROYAL** CHEADLE,  
CHESHIRE

A Registered Hospital for MENTAL DISEASES, and its Seaside Branch, GLAN-Y-DON, Colwyn Bay, N. Wales.

THE object of this Hospital is to provide the most efficient means for the treatment and care of PRIVATE PATIENTS OF BOTH SEXES suffering from MENTAL and NERVOUS DISEASES. The Hospital is governed by a Committee appointed by Trustees.

VOLUNTARY, TEMPORARY and CERTIFIED PATIENTS RECEIVED.

For Terms and further information apply to the MEDICAL SUPERINTENDENT.

Telephone: GATLEY 2231.

**CHISWICK HOUSE** Telephone: PINNER 234

A Private Nursing Home for the Treatment and Care of Mental and Nervous Illnesses in both sexes. **PINNER, MIDDLESEX**

A modern house, 12 miles from Marble Arch, in attractive, secluded grounds. Fees from 12 guineas per week, inclusive. Patients treated under certificate, Temporary or Voluntary status. Modern forms of treatment, including psychotherapy, narco-analysis, modified insulin, occupational therapy, E.C.T., etc.

DOUGLAS MACAULAY, M.D., D.P.M.

**HITCHAM PLACE, BURNHAM, BUCKS.**

(late Fenstanton, Christchurch Road, S.W.2)

A Private Home for the Care and Treatment of a limited number of Ladies with Mental and Nervous Disorders. Temporary and Voluntary Patients received. Large Country Mansion with twenty acres of grounds in Green Belt. Home-like surroundings.

Apply: Dr. Madeline R. Lockwood, Resident Physician. Telephone: Burnham 624.

**HAYDOCK LODGE,** NEWTON-LE-WILLOWS,  
LANCASHIRE

For the reception and treatment of PRIVATE PATIENTS of both sexes of the UPPER AND MIDDLE CLASSES suffering from Mental and Nervous Disorders, Alcoholism and Drug Addiction, either voluntary, temporary or under certificate. Patients are classified in separate buildings according to their mental condition.

Situated in park and grounds of 400 acres. Self-supported by its own farm and gardens in which patients are encouraged to occupy themselves. Every facility for indoor and outdoor recreation. For terms, prospectus, etc., apply MEDICAL SUPERINTENDENT.

Telegraphic Address: "Street," Ashton-in-Makerfield.

Phone: 7311 Ashton-in-Makerfield.

**HEIGHAM HALL, NORWICH**

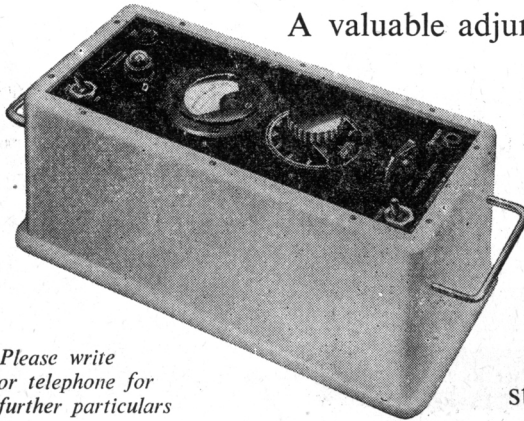
PRIVATE MENTAL HOME for Nervous and Mental illness. All types of treatment carried out. Accommodation for Alcoholics and Addicts available. Special Geriatric Unit now open.

Fees from 6 gns. per week upwards according to requirements.

Apply to Dr. J. A. SMALL.

Telephone: Norwich 20080.

## The "CONTRASTIM" Apparatus for Counter - Stimulus Therapy



*Please write  
or telephone for  
further particulars*

A valuable adjunct to Electroplexy,  
or as an independent Psychiatric  
technique.

Reduces or  
eliminates post-  
convulsant  
memory-defect.

Relieves nervous  
tension.

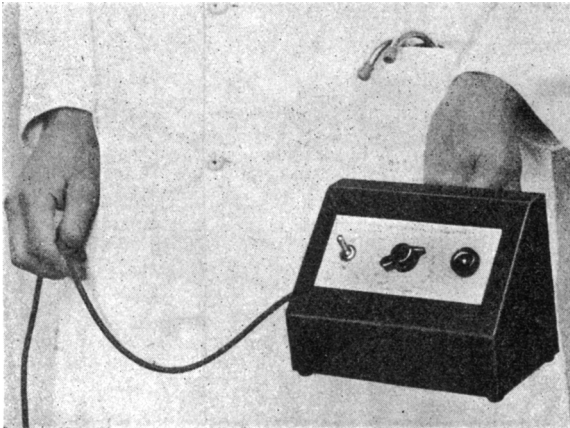
Central respiratory  
stimulus.

**THERATRONICS LTD. (Dept. B.7)**

6 Argyle Walk, London, W.C.1 Telephone: TERminus 2162/3

## 'ECTRON' CEREBRAL STIMULATOR

(For A.C. or D.C. Mains  
or 12 volt Battery)



*Companion Apparatus  
to the renowned*

**'ECTRON'**

**ELECTRO-CONVULSANT  
APPARATUS**

*also:*

**'ECTRON' Moulded  
Rubber Mouth Gag**

*Write for full details to:*

**ECTRON LTD.**

REELEK WORKS, BALDOCK, HERTS, ENGLAND

Telegrams: "Reelek" Baldock

Telephone: Baldock 154

*3 points for*

# 'DURACILLIN A.S.'

TRADE MARK

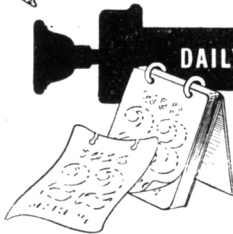
BRAND

PROCAINE PENICILLIN-G AQUEOUS SUSPENSION 300,000  
UNITS PER CC.



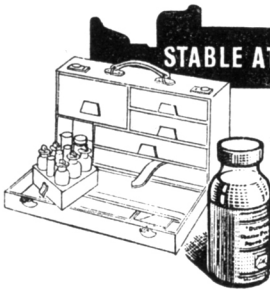
**READY TO INJECT**

— Is a stable aqueous suspension needing only gentle agitation before injection. Dry syringe and needle not essential



**DAILY DOSES ADEQUATE**

— In most infections a daily dose of 1 cc. will secure adequate tissue concentrations



**STABLE AT ROOM TEMPERATURE**

— Refrigeration not necessary. Is stable for twelve months at 60°F

*'Duracillin A.S.' is supplied in 10 cc. rubber-capped ampoules No. 554 (300,000 units per cc.)*

**ELI LILLY AND COMPANY LIMITED**  
**BASINGSTOKE, HANTS.**

# Reliability

in delicate Surgery

The THERATOR MINOR  
DIATHERMY, Type MME 3



For the most delicate electro-surgery, the Therator Minor Diathermy reliably provides two distinct cutting-currents, ideal respectively, for ophthalmic and neuro-surgery. Output is valve-generated, perfect coagulation being assured by careful selection of component values. Current intensity is regulated by a single knob and is repeatable at pre-selected control positions. A *de luxe* set of electrodes and mobile trolley complete the equipment if required. Further information is freely available.

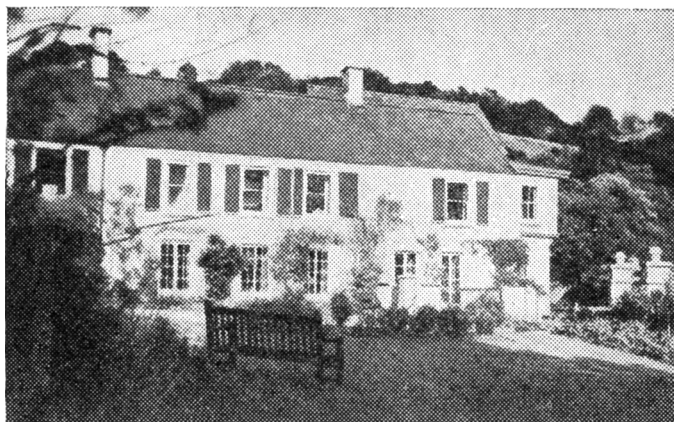
## MARCONI instruments

MARCONI INSTRUMENTS LTD., ST. ALBANS, HERTS. Telephone: St. Albans 6161/7

Marconi House, Pudding Chare, Newcastle-on-Tyne. ● Marconi House: 38 Pall Mall, Liverpool.  
19 The Parade, Leamington Spa. ● Marconi House, Mount Stuart Square, Cardiff.  
233 St. Vincent Street, Glasgow. ● 41 Donegall Place, Belfast.

# BARNWOOD HOUSE

## GLOUCESTER



CRICKLEY COURT—ONE OF THE SEPARATE VILLAS

A REGISTERED HOSPITAL, (outside the National Health Service) for the CARE and TREATMENT of LADIES and GENTLEMEN suffering from NERVOUS and MENTAL DISORDERS. Within two miles of the Western and London Midland Regional Railway Stations at Gloucester, the Hospital is easily accessible by rail from London and all parts of the United Kingdom. It is beautifully situated at the foot of the Cotswold Hills, and stands in its own grounds of over 300 acres. Voluntary Patients of both sexes are also received for treatment. Special accommodation is also provided at three villa residences, all of which stand in their own grounds and are entirely separate from the main Hospital. All the most modern methods of treatment including electric shock and prefrontal leucotomy are used.

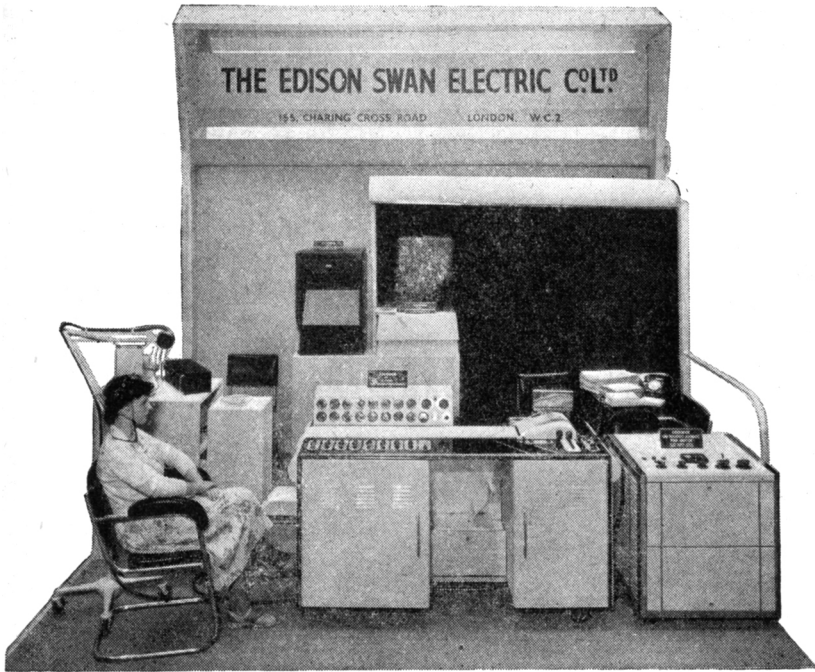
*For Terms, etc., apply to*

**G. W. T. H. FLEMING, M.R.C.S., L.R.C.P., D.P.M.,**  
**Physician Superintendent,**

*who may be seen in London by appointment*

TELEPHONE: No. 66207 GLOUCESTER





*The first world demonstration  
of an 8-channel Electro  
Encephalograph with simultaneous  
automatic wave analysis.*

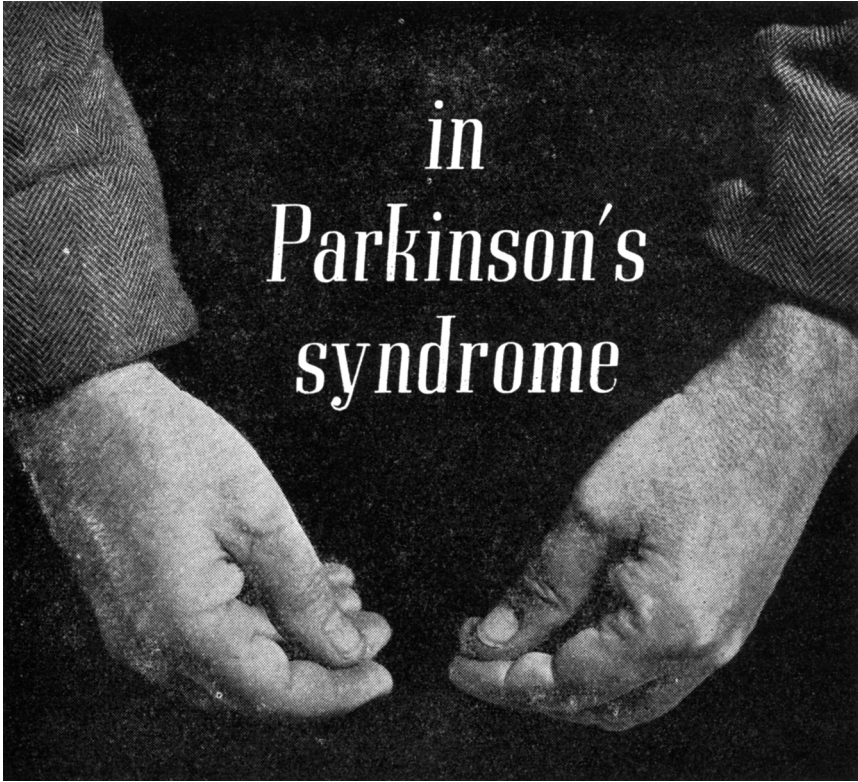
**T**HIS demonstration was given by the manufacturers,  
The Edison Swan Electric Co. Ltd., London, at the International  
Congress of Radiology, 1950

**EDISWAN**

**THE EDISON SWAN ELECTRIC CO. LTD.**

**155 CHARING CROSS ROAD · LONDON · W.C.2**

*Member of the A.E.I. Group of Companies*



**'LYSIVANE'**

trade mark

brand

**ethopropazine hydrochloride**

a new synthetic drug, has been shown to give symptomatic improvement in the varied manifestations of the condition, and its beneficial effect is apparent in both idiopathic and post-encephalitic cases.

The benefit obtained is evidenced by decreased rigidity and increased mobility. In those cases that show improvement the main result of treatment is that posture, gait, facies, speech and everyday muscular activity tend to improve and in some cases actually return to normal. 'Lysivane' is supplied in containers of 50 and 500 x 50 mgm. tablets.



manufactured by

**MAY & BAKER LTD**

MA48621

distributors

**PHARMACEUTICAL SPECIALITIES (MAY & BAKER) LTD., DAGENHAM**