

THE JOURNAL OF ROMAN STUDIES

VOLUME XXII

1932

PART 1

PAPERS DEDICATED TO SIR GEORGE MACDONALD K.C.B.

CONTENTS

Dedication

Prefatory Note

A Bibliography of Sir George Macdonald's Published Writings

Andreas Alföldi, The Helmet of Constantine with the Christian Monogram

J. G. C. Anderson, The Genesis of Diocletian's Provincial Re-organization

Donald Atkinson, Three Caistor Pottery Kilns

G. Baldwin Brown, Roman Engineering Works and their Aesthetic Character

Eric Birley, Roman Garrisons in the North of Britain

J. P. Bushe-Fox, Some Notes on Coast Defences

James Curle, Roman Drift in Caledonia

Ernst Fabricius, Some Notes on Polybius's Description of Roman Camps

H. Mattingly, Hoards of Roman Coins found in Britain

I. A. Richmond, The Irish Analogies for the Romano-British Barn-dwelling

M. I. Rostovtzeff, The Caravan-gods of Palmyra

R. E. M. Wheeler, Notes on Building-construction in Roman Britain

For the convenience of readers who may wish to bind this part of the Journal independently, a separate title-page has been included. A title-page for the volume as a whole will be issued as usual with Part 2.

**PUBLISHED BY THE SOCIETY FOR THE PROMOTION
OF ROMAN STUDIES AT THE OFFICE OF THE SOCIETY
50 BEDFORD SQUARE W.C.1. TO BE OBTAINED THROUGH
ALL BOOKSELLERS AND FROM THE SOCIETY.**

ALL RIGHTS RESERVED.

The Society for the Promotion of Hellenic Studies

Annual Subscription - ONE GUINEA. Entrance Fee - ONE GUINEA.
(Student Associates 10/6, and no entrance fee.)

PRESIDENT—PROFESSOR E. A. GARDNER, Litt.D.

THE Society, founded in 1879 to advance the study of Greek language, literature, history and art, maintains (in conjunction with the sister Society for Roman Studies)

- I. A Library of some 15,000 volumes, containing costly works and periodicals, not easy to consult, and very difficult to borrow, elsewhere.
- II. Some 10,000 lantern slides covering the whole domain of ancient life and art. These are divided into:—
 - (a) The general collection for personal selection.
 - (b) Sets of slides with lecture texts.

The Journal of Hellenic Studies was first issued in 1880, and has since been published in half-yearly parts. It is recognised both at home and abroad as the leading British organ of Greek archæology. Fifty volumes and supplements have been issued. It contains, in addition to articles by first authorities, abundant plates and other illustrations, and reviews of recent books of importance to classical studies. It is issued free to members.

Application for membership, or for information about the Society, should be addressed to the Secretary, at 50 Bedford Square, London, W.C.1

The Classical Association.

The objects of the Classical Association are to promote the development and maintain the well-being of classical studies, and in particular (a) to impress upon public opinion the claim of such studies to an eminent place in the national scheme of education; (b) to improve the practice of classical teaching; (c) to encourage investigation and call attention to new discoveries; (d) to create opportunities for intercourse among lovers of classical learning.

Membership of the Association is open to men and women alike. The annual subscription is 5s. (life composition, £3 15s.), and there is an entrance fee of 5s. (not charged to Libraries). Members receive a copy of the annual *Proceedings* of the Association and, on a payment of 2/6, of *The Year's Work in Classical Studies* (both post free). They may also obtain the *Classical Review* and *Classical Quarterly* at reduced prices, though the reduction cannot be guaranteed unless the subscription is paid before January 31st in each year. *Greece and Rome* may be obtained for an annual subscription of 7s. 6d.

Applications for membership should be addressed to the Hon. Treasurer, Mr. F. C. G. Langford, M.A., 35, Alleyn Park, Dulwich, S.E.21. Inquiries should be sent to The Triangle Offices, 61, South Molton Street, W.1, addressed either to the Hon. Secretaries of the Association (Miss E. C. Gedge and Mr. R. M. Rattenbury), or to the Hon. Secretary of any one of the District Branches, viz., Aberystwyth, Bedfordshire, Birmingham, Bristol, Cambridge, Cardiff, Hull, Kent, Leeds, Leicester, Liverpool, London, Manchester, Northumberland and Durham, North Wales, Nottingham; Oxford, Reading, Sheffield, Southampton, South Western, Sussex, Swansea, Taunton and West Somerset.

THE JOURNAL OF
ROMAN STUDIES

All rights reserved.

THE JOURNAL OF ROMAN STUDIES

VOLUME XXII

PUBLISHED BY THE SOCIETY FOR THE PROMOTION
OF ROMAN STUDIES AT THE OFFICE OF THE
SOCIETY, 50 BEDFORD SQUARE, LONDON, W.C.1

1932

GEORGIO MACDONALD
ILLUSTRISSIMI ORDINIS BALNEI EQUITI COMMENDATORI
DOCTORI UTRIVSQUE IURIS DOCTORI LITTERARUM
ACADEMIAE BRITANNICAE SOCIO
MONUMENTORUM ROMANORUM IN BRITANNIA ERUTORUM
INDAGATORI IMPIGERRIMO
RERUM ROMANARUM CETEROQUI AUCTORI GRAVISSIMO
HUIUS LIBRI DEDICATIONE
NATALEM SEPTUAGESIMUM GRATULANTUR
CUM SCRIPTORES TUM SOCIETAS STUDIIS ROMANIS
PROMOVENDIS INSTITUTA

CONTENTS

	PAGE
PREFATORY NOTE	I
A BIBLIOGRAPHY OF SIR GEORGE MACDONALD'S PUBLISHED WRITINGS	3
ANDREAS ALFÖLDI, The Helmet of Constantine with the Christian Monogram	9
J. G. C. ANDERSON, The Genesis of Diocletian's Provincial Re-organization ..	24
DONALD ATKINSON, Three Caistor Pottery Kilns	33
G. BALDWIN BROWN, Roman Engineering Works and their Aesthetic Character	47
ERIC BIRLEY, Roman Garrisons in the North of Britain	55
J. P. BUSHE-FOX, Some Notes on Coast Defences	60
JAMES CURLE, Roman Drift in Caledonia	73
ERNST FABRICIUS, Some Notes on Polybius's Description of Roman Camps ..	78
H. MATTINGLY, Hoards of Roman Coins found in Britain	88
I. A. RICHMOND, The Irish Analogies for the Romano-British Barn-Dwelling ..	96
M. I. ROSTOVITZEFF, The Caravan-Gods of Palmyra	107
R. E. M. WHEELER, Notes on Building-Construction in Roman Britain	117
W. W. TARN, Alexander Helios and the Golden Age	135
SIR GEORGE MACDONALD, John Horsley	161
HERBERT BOX, Roman Citizenship in Laconia, Part II	165
F. de ZULUETA, Violation of Sepulture in Palestine at the Beginning of the Christian Era	184
R. G. COLLINGWOOD and M. V. TAYLOR, Roman Britain in 1931	198
Reviews and Discussions	230
Reviews of Recent Publications	239
Notices of Recent Publications	263
List of Works received	267
Proceedings of the Society for the Promotion of Roman Studies, 1931-32: Open meetings	269
Annual General Meeting	269
Report of the Council for the year ending 31 December, 1931	270
Income and Expenditure Account for the year ending 31 December, 1931 ..	273
Balance Sheet as at 31 December, 1931	274
General Index of Names and Subjects	275
Special Indexes:—	
Index of Literary Authorities	281
Index of Inscriptions	282
Index of Papyri	283
Index of Coins	283
Title Page	iii
Dedication	v
List of Contents	vii
List of Reviews and Discussions	viii
List of Reviews and Notices of Recent Publications	viii
List of Plates	ix
List of Illustrations in the Text	xi
List of Officers and Council for 1931-32	xiii
List of Members, Student-Associates and Subscribing Libraries	xiv

REVIEWS AND DISCUSSIONS

	PAGE
A. Momigliano, <i>L'Opera dell Imperatore Claudio</i> . By Hugh Last	230
Goesta Saeflund, <i>Le Mura di Roma Repubblicana ; Saggio di Archeologia Romana</i> (<i>Acta Instituti Romani Regni Sveciae</i> 1). By I. A. Richmond	233

REVIEWS AND NOTICES OF RELENT PUBLICATIONS

REVIEWS

J. Carcopino, <i>Sylla ou la Monarchie manquée</i>	239
F. B. Marsh, <i>The Reign of Tiberius</i>	241
G. P. Baker, <i>Hannibal</i>	243
G. P. Baker, <i>Constantine the Great and the Christian Revolution</i>	244
James Hadley, <i>Introduction to Roman Law</i>	245
M. Rostovtzeff, <i>Foreign Commerce of Ptolemaic Egypt</i> (<i>Journal of Economic and Business History</i> , iv.)	246
M. Rostovtzeff, <i>Seleucid Babylonia</i> (<i>Fale Classical Studies</i> , 111)	247
F. W. Shipley, <i>Chronology of the Building Operations in Rome from the death of Caesar to the death of Augustus</i>	248
International Map of the Roman Empire. 1: 1,000,000. Sheet N30	249
<i>Forma Orbis Romani, Carte archéologique de la Gaule Romaine</i> . Fasc. 1	249
F. J. de Waele, <i>Noviomagus Batavorum</i> (<i>Romeinsch Nijmegen</i>)	251
R. G. Collingwood, <i>Roman Britain</i>	252
G. Sheldon, <i>The Transition from Roman Britain to Christian England</i> A.D. 368-664	253
Philip Corder and J. L. Kirk, <i>A Roman Villa at Langton, near Malton, E. Yorkshire</i>	255
W. J. Fieldhouse, T. May, and F. C. Wellstood, <i>A Romano-British Industrial Settlement near Tiddington, Stratford-upon-Avon</i>	258
John Sparrow, <i>Half-Lines and Repetitions in Vergil</i>	259
C. Buscaroli, <i>Virgilio : Il libro di Didone</i>	261
<i>Fragmenta Poetarum Latinorum Epicorum et Lyricorum Praeter Ennium et Lucilium</i> . Post Aemilium Baehrens iterum edidit W. Morel	262

NOTICES

G. Showerman, <i>Rome and the Romans : a Survey and Interpretation</i>	263
G. J. Laing, <i>Survivals of Roman Religion</i>	264
L. R. Taylor, <i>The Divinity of the Roman Emperor</i>	264
J. Carcopino, <i>Ce que Rome et L'Empire romain doivent à la Gaule</i>	265
L. Zancan, <i>Sul Possesso dell' 'Ager Publicus'</i>	265
Tenney Frank, <i>Aspects of Social Behavior in Ancient Rome</i>	265
F. Behn, <i>Numantia und seine Funde</i>	266
A. Stein, <i>Römische Inschriften in der antiken Literatur</i>	266
A. E. Robinson, <i>False and Imitation Roman coins</i>	266
<i>A List of Books in the English Language on Ancient History for the Use of Teachers in Schools</i> . Compiled by Norman H. Baynes	267

LIST OF PLATES

- Plate 1 (Frontispiece) : Portrait of Sir George Macdonald, K.C.B.
- The Helmet of Constantine with the Christian Monogram :
- Plates II, III, IV. *Solidi* struck at Ticinum, A.D. 315–317.
- Three Caistor Pottery Kilns :
- Plate v. 1. Kiln I, looking south, showing fire-hole opening and stoke-hole.
2. Kiln I, looking east, showing tongue-column and vessels inserted to support oven-floor.
- Plate VI. 1. Kiln II, showing oval slots in oven floor ; a broken jar-base is set in the surface of the floor.
2. Kiln III, showing west side broken away, tongue-column and oven-floor with circular holes.
3. Kilns II and III, showing common stoke-hole and fire-hole of Kiln II.
- Plate VII. Coarse jars of Groups A and B.
- Plate VIII. Coarse jars of Groups B and C.
- Plate IX. Coarse jars of Groups D, E, F, and G.
- Plate X. Coarse jars of Groups G and H.
- Plate XI. Jars, jugs and bowls of Groups K, L, and M.
- Plate XII. Vessel of coarse dark-grey ware (Group Q, 3).
- Roman Engineering Works and their Aesthetic Character :
- Plate XIII. The Pont du Gard : Perspective view from the right bank.
- Some Notes on Roman Coast Defences :
- Plate XIV. Pevensey : view and plan of timber-framing grooves in foundation of South Wall.
- Plate XV. Pevensey : view of beam-hole and chalk-and-flint packing, and plan and section of timber framing, under the bastion west of the fallen North Wall.
- Plate XVI. Richborough : remains of turret on the West Wall showing four beam-holes.
- Plate XVII. 1. Richborough : remains of turret between the N.W. angle of the Wall and N. Postern Gate, showing three beam-holes.
2. Burgh Castle : underside of fallen bastion on the South Wall, showing impression of timber-framing.
- Plate XVIII. Richborough : elevation and section of the turret between N.W. angle of Wall and Postern Gate, with plan at beam-hole level and conjectural reconstruction of the timber-framing.
- Plate XIX. Old Burrow, North Devon : plan of earthwork based on Mr. St. George Gray's survey (*Devon Assoc. Trans.* xlv, p. 703).
- Roman Drift in Caledonia :
- Plate XX. West Lothian, Scotland : bronze patera decorated with champlevé enamel.
- Plate XXI. Brooches found on native sites in Scotland.
- The Irish Analogies for the Romano-British Barn-dwelling :
- Plate XXII. Durrow Cross, King's County, with gable-top modelled in the form of a house.
- Plate XXIII. 1. Lower Lough Erne : shrine of yew and bronze found 1891, now in the National Museum, Dublin.
2. The Temple at Jerusalem, from the 'Book of Kells' (Trinity Coll., Dublin), fol. 202^v, drawn as an elaborate house.
- Plate XXIV. Kilmalkedar Church, Co. Kerry.
- The Caravan Gods of Palmyra :
- Plate XXV. Relief, representing Palmyrene gods, in the Damascus Museum.
- Plates XXVI–XXVIII. Palmyrene *tesserae*.

Notes on Building Construction in Roman Britain :

- Plate xxix. Verulamium : 1. Partition wall, originally timbered with plastered sides, re-inforced by roof-tiles, in a second-century house.
2. Matrix of circular wall-post in a second-century building.
- Plate xxx. Hadrian's Wall : 1. Horizontal courses of masonry retained on a slope at Highshield Crag.
2. Courses conforming with a slope of 1 in $3\frac{1}{2}$ at Poltross Burn.
- Plate xxxi. Neumagen : Town Wall showing the broken tombstone of C. Albinus Asper and his wife Secundia Restituta (now in the Provinzialmuseum, Trier) re-used in the foundations.
- Plate xxxii. 1. Richborough : interior of North Wall, late third century, showing the use of chequered masonry by one gang of builders and plain masonry by another.
2. Verulamium : relieving arch, c. A.D. 300.

Roman Britain in 1931 :

- Plate xxxiii. Chester amphitheatre : arena wall
- Plate xxxiv. 1. Croy Hill on the Antonine Wall : stone-lined pit under N.E. angle-tower.
2. Verulamium : outer ditch at southern corner of later Roman City.
- Plate xxxvi. Verulamium : south corner-tower.
- Plate xxxvi. Verulamium : mosaic pavements.
- Plate xxxvii. 1. Langton, Yorks : three jars found at the bottom of a well.
2. Colchester : Italian bronze patera of the first century A.D.
- Plate xxxviii. Gloucester : interior face of Town Wall at the Crypt Grammar School.
- Plate xxxix. Gloucester : south internal corner-turret.
- Plate xl. Jordan Hill—September, 1931. Plan.
- Plate xli. Southwick : view from the air of the foundations of a Roman Villa.
- Plate xlii. 1. Wargrave : head of bronze pin or nail, decorated with enamel.
2 & 3. Southwick : stamped amphora-handle and plate attached to a lead water-pipe.
- Plate xliii. Richborough : 1. View of the ditches on the north side of the third-century earth fort.
2. Air-view, looking north-east, showing the central foundation.
- Plate xliv. York : tombstone found in two parts in the north and south walls of All Saints Church.
2. Keynsham : statue-base found in Messrs. Fry's works, Somerdale.

Review of *A Roman Villa at Langton, near Malton, E. Yorks*, by Philip Corder and John L. Kirk :

- Plate xlv. View and plan of bath-house.
- Plate xlvi. Plan of house of period 2 or 3, with another of period 4 to the north of it.
- Plate xlvii. General view of house of period 4, shown in plan on plate xlvi.
- Plate xlviii. Plan of barn with bath-house, periods 4 and 5.
- Plate xlix. View from the north-east of barn with bath-house of period 4.
- Plate l. 1. Near view of small bath-house in barn, period 4.
2. Circular building identified as a mill.

LIST OF ILLUSTRATIONS IN THE TEXT

	PAGE
Three Caistor Pottery Kilns :	
Fig. 1. Plan of a third-century house built on the site of pottery-kilns ..	33
Fig. 2. Kiln I : plan and section	35
Fig. 3. Kiln II : plan and section	37
Fig. 4. Kiln III : plan and section	38
Fig. 5. Vessels of Groups N, O, P, and Q	44
Fig. 6. Fragment of jar of rough grey clay (Group Q, 4)	46
Roman Engineering Works and their Aesthetic Character :	
Fig. 7. The Pont du Gard, looking down stream : view taken from the right bank	51
Some Notes on Roman Coast Defences :	
Fig. 8. Pevensey : section of foundation and plan of timber-framing under north wall between second and third bastions from the East Gate	61
Fig. 9. Pevensey : plan of timber-framing under the Bastion east of the fallen north wall	62
Fig. 10. Burgh Castle, Suffolk : vertical beam-holes in south wall	64
Fig. 11. Burgh Castle, Suffolk : view of vertical beam-holes in south wall ..	65
Some Notes on Polybius's Description of Roman Camps :	
Fig. 12. Diagrammatic plan to illustrate Polybius's description of a camp for an unusually strong force	79
Some Irish Analogies for the Romano-British Barn-dwelling :	
Fig. 13. Iniscaltra Church, co. Galway : roof finial in stone, imitative of a wooden archetype	98
Fig. 14. Sketch-plan of a house of an <i>aire-tuisi</i>	103
Fig. 15. Scandinavian <i>stue</i> : A, Källberga, Alunda ; B, Augerum Blekinge ; C, Hustomtning 1, Brostorp ; D, Jaeren	105
Notes on Building-Construction in Roman Britain :	
Fig. 16. Verulamium : section of partition-wall in Building iv, 2,	118
Fig. 17. Colchester : early Roman Barrack-building excavated 1931	119
Fig. 18. Elevation and plan of Roman wall, found in Friday and Knight- rider Streets, London, in 1905 (<i>Archaeologia</i> 1x)	122
Fig. 19. Box-voussoirs from London (London and Guildhall Museums)	128
Fig. 20. Reconstruction of vault in the Bath-building at Chesters	130
Roman Britain in 1931 :	
Fig. 21. Croyhill on the Antonine Vallum	199
Fig. 22. Verulamium : map showing the prehistoric and the first and second Roman cities	207
Fig. 24. Colchester : South Gaulish bowl found in a hut-floor	211
Fig. 25. Gloucester : plan showing the line of the Roman Town Wall	214
Fig. 26. Gloucester : south corner-turret of the Town Wall	215
Fig. 27. The Roman villa at Magor Farm, Camborne, Cornwall	217
Fig. 28. Plan of Roman villa site at Southwark	220
Fig. 29. Willoughton, near Kirton, Lincs : bronze weight	227
Review of <i>A Roman Villa at Langton, near Malton, E. Yorks</i> , by Philip Corder and John L. Kirk :	
Fig. 30. Early entrenchment, overlaid by barns of periods 4 and 5	256
Fig. 31. Sections through ditches of early entrenchment	257
Fig. 32. Development of Roman dwelling-house	257

**SOCIETY FOR THE PROMOTION
OF ROMAN STUDIES**

OFFICERS AND COUNCIL FOR 1932-1933

President

PROFESSOR N. H. BAYNES, F.B.A.

Vice-Presidents

PROFESSOR F. E. ADCOCK, D.LITT.
PROFESSOR J. G. C. ANDERSON.
SIR JOHN BARRAN, BART.
R. C. BOSANQUET, M.A. F.S.A.
SIR A. J. EVANS, D.LITT. F.R.S. F.B.A. F.S.A.
G. F. HILL, LL.D. LITT.D. F.B.A.
T. RICE HOLMES, D.LITT. LITT.D.
PRINCIPAL H. STUART JONES, D.LITT. F.B.A.
SIR FREDERIC KENYON, G.B.E. K.C.B.
D.LITT. LITT.D. LL.D. F.B.A.

HUGH LAST, M.A.
SIR GEORGE MACDONALD, K.C.B. D.LITT.
LL.D. F.B.A.
J. W. MACKAIL, LL.D. F.B.A.
SIR W. M. RAMSAY, D.LITT. D.C.L. LL.D.
F.B.A.
THE RIGHT HON. SIR J. RENNELL RODD,
G.C.M.G. G.C.V.O. C.B.
A. H. SMITH, M.A. F.S.A.
MRS. ARTHUR STRONG, C.B.E. LITT.D. LL.D.
F.S.A.

Ordinary Members of the Council

Elected June, 1930.

PROFESSOR B. ASHMOLE.
E. B. BIRLEY, M.A., F.S.A.
PHILIP CORDER, M.A., F.S.A.
ROGER HINKS.
H. C. OAKLEY, M.A.
C. A. R. RADFORD, M.A. F.S.A.
PROFESSOR H. J. ROSE.
E. WOOLLEY, F.S.A.

THE MASTER OF MAGDALENE COLLEGE,
CAMBRIDGE.
I. A. RICHMOND, M.A., F.S.A.
R. SYME, M.A.
MISS J. TOYNBEE, M.A., D.PHIL.
PROF. J. WIGHT DUFF.

Elected June, 1932.

W. H. BUCKLER, M.A. LL.B. F.S.A.
C. W. M. COX, M.A.
R. GARDNER, M.A.
C. F. C. HAWKES, M.A.
V. E. NASH-WILLIAMS.
H. M. D. PARKER, M.A.
JOHN SPARROW, M.A.
W. N. WEECH, M.A.

Elected June, 1931.

J. P. BUSHE-FOX, F.S.A.
R. G. COLLINGWOOD, M.A.
H. MATTINGLY, M.A.

Treasurer

ROBERT HOLLAND-MARTIN, C.B. F.S.A.

Auditor

C. T. EDGE, M.A. A.C.A.

Editorial Committee

PROFESSOR F. E. ADCOCK.
PRINCIPAL H. STUART JONES.
HUGH LAST.

SIR G. MACDONALD.
R. SYME.

Library Committee

PROFESSOR N. H. BAYNES. Dr. G. F. HILL. HUGH LAST. H. MATTINGLY

Finance Committee

THE PRESIDENT. THE TREASURER. SIR JOHN BARRAN, BART.

Keeper of Books and Lantern-slides

JOHN PENOYRE, C.B.E. M.A. 50 Bedford Square, W.C.1.

Secretary and Editor

MISS M. V. TAYLOR, M.A. F.S.A. Haverfield Library, Ashmolean Museum, Oxford.

LIST OF MEMBERS

To November 15th, 1932

N.B.—It is requested that notice be given to the Secretary of any error, omission, change of address, resignation or death.

HONORARY MEMBERS

- R. Cagnat, Professeur au Collège de France, Secrétaire perpétuel de l'Académie des Inscriptions et Belles Lettres, 3 rue Mazarine, Paris, VI^e.
Professor F. Cumont, 19 Corso d'Italia, Rome, Italy.
Professore Gaetano De Sanctis, Via Santa Chiara 61, Roma, Italy.
Professor Dr. Ernst Fabricius, Goethestrasse 44, Freiburg-i-Breisgau, Germany.
Professor Dr. Wilhelm Kubitschek, Pichlergasse 1, Wien, IX, Austria.
Professor M. Rostovtzeff, Yale Station 1916, New Haven, Conn., U.S.A.

ORDINARY MEMBERS

L indicates Life Compounder

- L** Abbott, Edwin, M.A. *Jesus College, Cambridge.*
Adams, P. H., F.R.I.B.A. *Pembridge Manor Hotel, Pembridge Crescent, W¹¹.*
Adcock, Prof. F. E., D.Litt., M.A. *King's College, Cambridge.*
Aitchison, W. de L. *Killingworth Hall, Northumberland.*
Alford, Miss. 51 *Gloucester Gardens, Bishop's Road, W.²*
L Allen, P. S., M.A., D.Litt., F.B.A. *Corpus Christi College, Oxford.*
Alton, Prof. E. H, M.A. 40 *Trinity College, Dublin.*
Anderson, Prof. J. G. C, LL.D. 25 *Charlbury Road, Oxford.*
Anderson, R. H. 95 *Alexandra Road, N.W.⁵*
Anderson, Prof. W. Blair, Litt.D. *The University, Manchester.*
Anderson, Prof. W. C. F, M.A. *Hermits Hill, Burghfield Common, Reading.*
Andrews, P. M., A.R.I.B.A. 5 *Montague Road, West Ealing, W.¹³*
Armstrong, G. C., B.A. *Levavi, St. John's Road, Cosham, Hants.*
Ashby, Mrs. Thomas. *Royal Pavilion Hotel, Folkestone.*
Ashmole, Prof. B., M.A. *High & Over, Amersham, Bucks.*
Asquith, Capt. R. J. 3 *The Gardens, Stratford-on-Avon.*
Atkinson, Prof. D., B.A. *The University, Manchester.*
Austin, E. H. 158 *Poplar Road, Merton Park, S.W.¹⁹*
- Baddeley, St. Clair. *Castle Hale, Painswick, Stroud, Glos.*
Bagenal, Hope, A.R.I.B.A. 34 *Bedford Square, W.C.¹*
Bagnani, Gilbert. 6 *Via Pompeo Magno, Rome, Italy.*
Bailey, C, M.A. *Balliol College, Oxford.*
Bailey, W. O. *Faircroft, Cobham, Surrey.*
Baillie Reynolds, P. K., M.A., F.S.A. *The University College of Wales, Aberystwyth.*
Baker, A. B. Lloyd, B.A. *Devonshire House, Bath Road, Cheltenham.*
Baker, G. P. 4 *Wentworth Studios, S.W.³*
Baldwin, The Rt. Hon. Stanley, M.A., M.P. *Astley Hall, near Stourport.*
L Balfour, Hon. J. M. 8 *Basinghall Street, E.C.²*
Balsdon, J. P. V. D. *Exeter College, Oxford.*
Barber, E. A., M.A. *Exeter College, Oxford.*
L Barlow, Miss A. E. F. *Greenthorne, Edgworth, near Bolton.*
Barnett, T. G. *Rednal, Birmingham.*
Barran, Sir John, Bart. *Sawley Hall, Ripon.*

- Barratt, T. H. 88 *Alexandra Crescent, Bromley, Kent.*
 Barrow, R. H. 24 *Hilldown Road, S.W.*¹⁶
 Barton, Mrs. W. J., M.A. 19 *Penny Street, Portsmouth.*
 Basden, Miss M. F. 21 *The Drive, Hove.*
 Batchelor, F., M.A. *The Glasgow Academy, Glasgow, W.*²
 Baty, C. W., M.A. *Greenbank House, 5 Cambrian View, Chester.*
 Baynes, Prof. N. H., F.B.A. *Fitzwalters, Northwood, Middlesex.*
 Beevor, Miss J. H. *Crescent House, Hillary Place, Leeds.*
 L Begg, W. Roy. *College of the City of New York, 17 Lexington Avenue, New York City.*
 L Benecke, P. V. M., M.A. *Magdalen College, Oxford.*
 L Benn, Mrs. Alfred. *Il Ciliugio, Via del Palmerino, Florence, Italy.*
 Bensly, Prof. E., M.A. *Oundle Cottage, Much Hadham, Herts.*
 Bentinck, F. Cavendish, F.S.A. 78 *Harley Street, W.*¹
 L Berry, Sir James, Kt., F.R.C.S. F.S.A. *Bramblebury, Dunsmore, nr. Wendover, Bucks.*
 Bettoney, H. 71 *Romney Street, Westminster, S.W.*¹
 Bevan, E. J. *Wycliffe College, Stonehouse, Gloucs.*
 Bevan, E. R. *Wray Lane House, Reigate.*
 Bibby, E. E. *The University, Leeds.*
 L Billson, C. J., M.A. *Weald House, Heathfield, E. Sussex.*
 Birley, E. B., M.A., F.S.A. *Chesterholm, Bardon Mill, Northumberland.*
 Blackman, Mrs. I. E. S. *St. Joan, Barnett Wood Lane, Ashtead, Surrey.*
 Blair, C. H. Hunter, M.A., F.S.A. 57 *Highbury, Newcastle-on-Tyne.*
 Blegen, Mrs. C. W. 9 *Plutarch Street, Athens, Greece.*
 Blomfield, Sir Reginald, M.A. R.A. F.S.A. 51 *Frognaal, Hampstead, N.W.*¹
 Blore, W. P. *Ludgrove, New Barnet, Herts.*
 L Body, L. A., M.A. *St. Chad's College, Durham.*
 L Bosanquet, R. C., M.A., F.S.A. *Rock Moor, Alnwick.*
 Bothamley, C. H., M.Sc. *Resthaven, Yatton, Somerset.*
 Bowen, H. C. *Caldy View, Tenby, S. Wales.*
 Bowra, C. M., M.A. *Wadham College, Oxford.*
 Box, H., B.A. *University College, Hull.*
 Boyce, Sidney M., B.A. *The Grammar School, Chorley.*
 Braunholtz, Prof. G. E. K. 22 *Old Road, Headington, Oxon.*
 Brett, Mrs. A. B., M.A., F.R.N.S. 131 *Maple Avenue, Flushing, N.Y., U.S.A.*
 Brewis, W. Parker, F.S.A. *Glenbrae, Jesmond Park West, Newcastle-on-Tyne.*
 Brice-Smith, R., M.A. *Brighlands, Newnham, Gloucestershire.*
 Bridge, J. J. R. 17 *Devonshire Buildings, Bath.*
 Brigg, W. Anderton, M.A., LL.M. *Kildwick Hall, nr. Keighley, Yorks.*
 Brogan, Mrs. O., M.A. *University College, Gower Street, W.C.*¹
 Brooke, Rev. A. E., D.D. *King's College, Cambridge.*
 Brown, A. Theodore.
 L Brown, James. *Gala Hill, Galashiels.*
 Brown, W. B. 10 *Corfton Road, Ealing, W.*
 Bruce-Clarke, Miss. *Minley, Reigate.*
 Brunyate, Mrs. R. 158 *Gloucester Terrace, W.*²
 Brydges, E. E. H., M.A. 11 *Stone Buildings, Lincoln's Inn, W.C.*²
 Buckland, Prof. W. W., LL.D., F.B.A. 9 *Grange Road, Cambridge.*
 Buckler, W. H., M.A. 1 *Bardwell Road, Oxford.*
 L Bulwer, Miss. *Dalling, Nr. Uckfield, Sussex.*
 L Bulwer, Miss Dora E. *Dalling, Nr. Uckfield, Sussex.*
 L Burdon, Rev. R. J. *Parkburst House, Haslemere.*
 Burnside, Rev. Canon W. F., M.A. *St. Edmund's School, Canterbury.*
 Burrowes, Major P. W. *Mont au Nord, Jerbourg, Guernsey.*
 Burl, D. A. 20 *The Parade, Epsom, Surrey.*
 Burn, Lt.-Col. A. H., C.I.E., O.B.E. *Army Mansions, Peshawar, India.*
 Bury, Gerard. *West Wrating Park, Cambridge.*

- L Bush, W. T. *Columbia University, New York City, N.Y., U.S.A.*
 Bushe-Fox, J. P., F.S.A., *Benlmond House, Downshire Hill, Hampstead, N.W.*
 Butcher, Surg.-Lt.-Comm. W. H., R.N.V.R., M.D. *St. John's, Godstone, Surrey.*
 Butler, Prof. H. E, M.A. *University College, London.*
 Butler, Harold. *Heston Cottage, Heston, Middlesex.*
 L Buxton, Denis A. J. *Wilderness House, Ongar, Essex.*
- Calder, Prof. W. M. M.A., F.B.A. *58 St. Alban's Road, Edinburgh.*
 Callaghan, Rev. T. T. *c/o Messrs. Bickers & Sons, Charles Street, Haymarket, W.*
 Cannan, F. G., B.A. *The Grammar School, Drax, near Selby.*
 Capps, Prof. E. *Princeton, New Jersey, U.S.A.*
 L Caroë, W. D. M.A. F.S.A. *3 Great College Street, Westminster, S.W.¹*
 Carrington, R. C. *Haileybury College, Hertford.*
 Carswell, R. L. S., M.A. *The Academy, Elgin.*
 L Carthy, Miss. *6 Albert Place, Victoria Road, W.⁸*
 Cary, M. D.Litt. *82 Talbot Road, Highgate, N.⁶*
 Chance, Arthur F. *The Schools, Shrewsbury.*
 Chapman, C. S., M.A. *The Bede School for Boys, Sunderland.*
 Charlesworth, M. P., M.A. *St. John's College, Cambridge.*
 Charlton, J. *Armstrong College, Newcastle-on-Tyne.*
 Chipper, Miss R. *46 Ridgmount Gardens, W.C.¹*
 Chitty, Rev. G. J., M.A. *The Rectory, Worplesdon, Guildford.*
 Clark, Prof. A. C, M.A. Litt.D. F.B.A. *Corpus Christi College, Oxford.*
 L Clauson, Sir Charles. *Hawkshead House, Hatfield.*
 Cleminson, F. J. *32 Harley Street, W.¹*
 Clifton, E. W. V, M.A. *11 Meadow Bank, Chorltonville, Manchester.*
 Cloke, F. A. *Salisbury House, 51 Strand Street, Sandwich*
 Coate, Miss Dora. *The High School, Truro.*
 Cole, S. C., B.A. *20 Latham Street, Avenham, Preston, Lancs.*
 Colegate, A. *16 Princes Gardens, S.W.⁷*
 Coleman, R. H. F. *The Gate House School, Kingston Hill, Surrey.*
 Coleman, W. H., B.A. *22 Elgin Park, Redlands, Bristol.*
 Collander-Brown, W. H., M.A. *Haledene, Edgwarebury Lane, Edgware, Middlesex.*
 Collingwood, R. G, M.A. F.S.A. *Pembroke College, Oxford.*
 Collison, C. *Lonsdale House, St. Bees, Cumberland.*
 Compton, E. G. *2 Montagu Place, W.1.*
 Connall, Prof. B. M., M.A. *Raupaki, Bramhope, Nr. Leeds.*
 Constable, H. L., M.A. *38 Beechwood Avenue, Kew Gardens, Surrey.*
 Constantine, M. H. *'Brendon,' Nairn Road, Talbot Woods, Bournemouth.*
 Conway, Prof. R. S, M.A., Litt.D., F.B.A. *11 Ridgmont Road, St. Albans.*
 Cook, Prof. A. B, M.A. *Queens' College, Cambridge.*
 Cookson, C. M.A. *Magdalen College, Oxford.*
 Corder, Philip, M.A., F.S.A. *6 Clifton, York.*
 Corin, E., B.A. *East Anglian School, Bury St. Edmunds.*
 Corley, F. E. *Woodside, Witney, Oxon.*
 Cornford, Henley. *59 Ranelagh Gardens Mansions, S.W.⁶*
 Cornford, Prof. F. M, M.A. *Conduit Head, Madingley Road, Cambridge.*
 Cotton, A. R., M.B.E., F.S.A. *Inward Shaw, Park Lane, Ashtead, Surrey.*
 Cox, C. W. M., M.A. *New College, Oxford.*
 Craig, J. D, M.A. *The University, Sheffield.*
 Craster, H. H. E, M.A., D.Litt., F.S.A. *All Souls College, Oxford.*
 Crees, Dr. J. H. F. *The Cathedral School, Hereford.*
 Crocker, A. J. *The College, Loughborough, Leics.*
 Culley, Mrs. *Willoughby, Wildwood Road, Golders Green, N.W.¹¹*
 Cunnington, Mrs. M. E. *33 Long Street, Devizes.*
 Curle, James, LL.D., F.S.A. *Priorwood, Melrose.*

- Dalton, O. M., M.A., F.B.A., F.S.A. 12 *Sydney Place, Bath.*
 Daniel, Sir Augustus M., K.B.E. 2 *Hampstead Hill Gardens, Rosslyn Hill, N.W.*³
 Danson, J. R., M.A., M.C. 74 *Bidston Road, Birkenhead.*
 Davis, S. C. H. 20 *Blenheim Road, St. John's Wood, N.W.*⁸
 Davison, J. A. *Classics Dept., The University, Manchester.*
 Dean, Prof. L. R. *Denison University, Ohio, U.S.A.*
 Dennis, C. P. L., M.A., Ph.D.
- L** Deubner, Prof. L. 55 *Friedrich Wilhelmstrasse, Schlachtense, Berlin, Germany.*
L de Zulueta, Prof. F., M.A. D.C.L. *New College, Oxford.*
 Dickson, Mrs. George. *Sesame Club, Grosvenor Street, W.*¹
 Dodd, E. E., M.A. 20 *Sheriff Lane, Eldwick, Bingley, Yorks.*
 Dodgson, Miss J. C., B.A. 35 *Norham Road, Oxford.*
 Dolling, H. W. 65 *Victoria Street, St. Albans.*
 Drake, H. L., M.A. *Pembroke College, Oxford.*
 Droop, Prof. J. P. 23 *Ullet Road, Sefton Park, Liverpool.*
 Drummond, Rev. W. H. 15 *Rawlinson Road, Oxford.*
 Duff, J. D., M.A. *Strathaird, Cambridge.*
 Duff, Prof. J. Wight, M.A., Litt.D. *Armstrong College, Newcastle-upon-Tyne.*
 Dunsford, E. 33 *Maxwell Road, Winton, Bournemouth.*
- Ecob, P. E., M.A. *Bedford Road Collegiate Institute, Saskatoon, Saskatchewan, Canada.*
 Edge, Cyril T., M.A., A.C.A. *Vernon House, Sicilian Avenue, Southampton Row, W.C.*¹
 Edmonds, J. M., M.A. *Gryt-Howe Cottage, Storey's Way, Cambridge.*
 Egerton-Warburton, W., M.A. *C/o The War Office, London, S.W.*¹
 Ellis, K. H. *Trinity College, Cambridge.*
 Elsworth, W. L. *Glan Lfor, 8 Walthew Avenue, Holyhead.*
 Estelrich, J. *Apart, 789, Barcelona, Spain.*
- L** Evans, Sir A. J., M.A., D.Litt., LL.D., F.R.S., F.B.A., F.S.A. *Toulbury, near Oxford.*
 Evans, Sir E. Vincent, K.C., C.H., LL.D., F.S.A., 64 *Chancery Lane, W.C.*²
 Evans, Lady, M.A. 9 *Kensington Park Gardens, W.*¹¹
- Fair, Miss M. C. 2 *Rigg Cottages, Eskdale, Cumberland.*
 Farquhar, James. *Secondary School, Leamington-on-Tyne.*
 Fell, Rev. R. A. L. *Kolbar, Ahmednager District, India.*
- L** FitzHugh, Prof. Thomas. *University of Virginia, Charlottesville, Va. U.S.A.*
L Fleming, Miss Helen J. *Boraston Knowe, Blackhall, Edinburgh.*
 Fletcher, Sir Banister, P.R.I.B.A., F.S.A. 1 *King's Bench Walk, E.C.*⁴
 Fletcher, Frank, M.A. 48 *Polstoe Road, Exeter.*
 Fletcher, G. B. A. *The University, Liverpool.*
 Forsey, G. F. 4 *Glebe Court, Highfield Lane, Southampton.*
 Fox, Cyril, Ph.D., F.S.A. *Four Elms, Heol Wen, Rhiwbina, Cardiff.*
 Francis, A. G., O.B.E., B.A., M.B., B.Sc., F.R.C.S. 20 *Beacon Hill, N.*⁸
 Frank Professor Tenney. *Johns Hopkins University, Baltimore, Maryland, U.S.A.*
 Franks, Percy, M.A. *Caister Road, Market Rasen, Lincs.*
 Frazer, Sir J. G., O.M., LL.D., D.Litt., Litt.D., D.C.L., F.B.A. *Albemarle Club, 37 Dover Street, W.*
 Fremantle, Miss I. M. E. *Huguenot University College, Wellington, Cape Province, S. Africa.*
 Freshfield, Douglas W., M.A. D.C.L. F.R.G.S. *Wych Cross Place, Forest Row, Sussex.*
 Freshfield, E. H. *Mint House, Upper Galton, Reigate.*

- Gair, Mrs. H. B. 72 *Eyre Court, St. John's Wood, N.W.*⁸
 Gardiner, Miss M. A. *Aidensholme, Helen's Bay, Co. Down, Ireland.*
 Gardner, Prof. E. A., M.A. *Recess, Boyn Hill, Maidenhead.*
 Gardner, Prof. E. G., M.A. 5 *Ruskin Close, Meadway, N.W.*¹¹
 Gardner, Prof. Percy, LL.D., Litt.D., F.B.A., F.S.A. 12 *Canterbury Road, Oxford.*
 Gardner, Eric, M.B., F.S.A. *Portmore House, Weybridge.*
 Gardner, R., M.C. M.A. *Emmanuel College, Cambridge.*
 Gardner, Willoughby, D.Sc., F.S.A., F.L.S. *Deganwy, N. Wales.*
 Giles, A. F., M.A. 23 *Hope Terrace, Edinburgh.*
 Giles, P., Litt.D. LL.D. *The Lodge, Emmanuel College, Cambridge.*
 Giveen, R. L. *Colet Court, Hammersmith Road, W.*
 Gloyne, Miss E. R. 178 *Chiltern Court, Baker Street, N.W.*¹
 L Gooch, G. P., M.A. *South Villa, Campden Hill Road, W.*⁸
 Gordon, Miss M. L., M.A. 112 *Victoria Road, Exmouth.*
 Green, G. E. 36 *Chamberlain Road, Highfield, Southampton.*
 Greenwood, J. A., LL.M. *Funtington House, near Chichester.*
 Greenwood, L. H. G., M.A. *Emmanuel College, Cambridge.*
 Gregory, Miss A. M. 7 *Lansdowne Road, Wolverhampton.*
 Grundy, Prof. W. W. 'Lerryn,' *Rhivobina, nr. Cardiff.*
 Gulbenkian, Nubar S. *c/o C. S. Gulbenkian, Avenue d'Iéna, Paris, XVI.*
- Hacking, Thomas. 6 *St. Martin's, Leicester.*
 Haddon, G. M. M. *Glaisdale, Somerset Way, Iver, Bucks.*
 Hall, Miss M. L., M.A. *Baldock, Herts.*
 Hall, Miss W. L. 4 *Homefield Road, Bromley, Kent.*
 Hallam, Mrs. G. H. *S. Antonio, Tivoli (Roma), Italy.*
 Halstead, Major H. Duckworth. 17 *Brownsville Road, Heaton Moor, Stockport.*
 Hannah, Ian C., F.S.A. *The Whim, Lamancha, Peeblesshire.*
 Harden, D. B., M.A. *The Ashmolean Museum, Oxford.*
 Hare, W. L. 3 *Gray's Inn Place, W.C.*¹
 Harper, Clifford. *King Edward VI School, Southampton.*
 Harris, Miss Amy. 10 *Holmbush Road, Putney Heath, S.W.*¹⁵
 Harris, L. C., F.R.G.S. 6 *High Street, Quarry Bank, Staffs.*
 L Harrison, E., M.A. *Trinity College, Cambridge.*
 Hawkes, Christopher, M.A. *British Museum, W.C.*²
 Hedley, W. Percy. *Gresham House, Corbridge-on-Tyne.*
 L Heitland, W. E., M.A. *Carmefield, Wordsworth Grove, Cambridge.*
 Hemp, Wilfrid J., F.S.A. *Minshull, High Wycombe.*
 Henderson, Miss A. M. *The Grange, Walton-on-the-Hill, Surrey.*
 Henderson, Thomas. *Educational Institute of Scotland, 47 Moray Place, Edinburgh.*
 Henry, Prof. R. M., M.A. *Queen's University, Belfast.*
 Hignett, Charles, M.A. *Hertford College, Oxford.*
 Hill, Mrs. B. H. 9 *Plutarch Street, Athens, Greece.*
 Hill, G. F., C.B., M.A., LL.D., Litt.D., F.B.A., F.S.A. *British Museum, W.C.*¹
 Hill, Miss L. C. Jewill. 1 *Polwitthen Road, Penzance, Cornwall.*
 Hill, Miss M. V., M.A. *Uplands School, Archery Road, St. Leonards-on-Sea.*
 Hinks, Roger, M.A. *British Museum, London, W.C.*¹
 Hiorns, F. R., F.R.I.B.A. 188a, *Adelaide Road, St. John's Wood, London, N.W.*³
 Hirst, Prof. G. M. *Barnard College, Columbia University, New York City, U.S.A.*
 Hodge, Harold, M.A. 9 *Highbury Place, N.*⁵
 L Hodgkin, R. H., M.A. 20 *Bradmore Road, Oxford.*
 Hodgkinson, H. R., F.S.A. *The Turret House, Hampton Lovett, Droitwich.*

- Hogan, Rev. W. K. P. *Horsford Vicarage, Norwich.*
 Holland Martin, R., C.B., F.S.A. 46 *Thurloe Square, S.W.*⁷
 Holmes, Maurice. 'Caerleon,' *Kidlington, Oxford.*
 Holmes, T. Rice, D.Litt., Litt.D., F.B.A. 1 *Akehurst Street, Roehampton, S.W.*
 L Holroyd, Michael, M.A. *Brasenose College, Oxford.*
 Home, Major Gordon. 1 *King's Bench Walk, E.C.*⁴
 Hopkins, G. B. J., M.A. *Orley Farm School, Harrow.*
 Hopkinson, Rev. Canon J. H., M.A. *The Abbey, Carlisle.*
 Horn, Theodore, M.A. *North Manchester Grammar School, Broughton, Manchester.*
 Hornsby, W. *Salthurn-by-the-Sea.*
 L Hose, H. F. *Dukwich College, S.E.*²¹
 Hotson, J. E. B. *c/o Messrs. Grindlay & Co, P.O., Box 93, Bombay, India.*
 Housman, Prof. A. E., M.A. *Trinity College, Cambridge.*
 How, F. W. *Eton College, Windsor.*
 How, W. W. 21 *Merton Street, Oxford.*
 L Howard, E. C. *Penslon Mon Repos, 126 bis rue Michelet, Alger, Algiers.*
 Hoyle, Miss A. M., B.A. 2 *New York Villas, Robin Hood's Walk, Boston, Lincs.*
 Hulbert-Powell, Rev. C. Lacy. *Burrell's Field, Cambridge.*
 Hunt, James. *Rydal School, Colwyn Bay.*
 L Hyde, J. H. 67 *Boulevard Lannes, Paris, France.*
- Impey, M. E. 1 *New Street Square, E.C.*⁴
- Jarrett, E. R., A.R.I.B.A. *Architectural Association. 34 Bedford Square, W.C.*¹
 James, Rev. J. W, D.D. *The Rectory, Dolgelly, Merioneth.*
 Jardine, Miss Lindsay. 26 *Murrayfield Road, Edinburgh.*
 Jayasuriya, F. B. P. *c/o Thos. Cook & Son Ltd., Berkeley Street, W.*¹
 Jelf, E. A. *St. Mary's Cottage, Waxwell Lane, Pinner.*
 Jenkins, Miss I. A. *Withington Girls' School, Fallowfield, Manchester.*
 L Jex-Blake, Miss K. 4 *Airlie Gardens, Campden Hill Road, W.*⁸
 Johnson, Miss Lorna A. *Western, The Firs, Bowden, Cheshire.*
 Johnston, W. R. *Recorder of St. Mary's College, California, U.S.A.*
 Jolliffe, Prof. R. O. *Queen's University, Kingston, Ontario.*
 Jones, A. Martin. *Villa Perpatoro, Maadi, Egypt.*
 Jones, E. Percival, B.A. *Colomendy Farm, Denbigh, N. Wales.*
 Jones, Principal H. Stuart, D.Litt. F.B.A. *University College of Wales, Aberystwyth.*
 Jones, Surgeon Captain K. H., R.N., M.B., F.Z.S. *The Manor House, St. Stephen's, Canterbury.*
 Jones, R. L. W. 67 *Alleyn Park, S.E.*²¹
 L Jones, Ronald P. 24 *Hornton Street, W.*⁸
 Judson, William, *c/o The Midland Bank, Cheltenham.*
- Keiller, A. 4 *Charles Street, Berkeley Square, W.*¹
 Kelland, G. T., B.A. 66 *Park Hill Road, Hampstead, N.W.*³
 Kenyon, Sir Frederic, G.B.E., K.C.B., D.Litt., Litt.D., LL.D., F.B.A. *Kirkstead, Godstone, Surrey.*
 Key, C. E., M.A. *Cheltenham Grammar School, Cheltenham.*
 Kirk, J. L., B.A., M.B., M.R.C.S., F.S.A. *Houndgate, Pickering, Yorks.*
 Kitson-Clark, Miss A. M. H. *Meanwoodside, Leeds.*
 Klein, Walter G. F.S.A. 7 *Eldon Road, N.W.*³
 Knapp, Prof. Chas., 1737 *Sedgwick Avenue, New York City, U.S.A.*
 Knapton, Rev. A. J. *The Vicarage, Clee St. Margaret, Craven Arms, Shropshire.*

Knight, W. F. J. *Bloxham School, nr. Banbury, Oxford.*
 Knowles, W. H., F.S.A., F.R.I.B.A. *Cbesfield, Malvern.*

- Lamb, E. C. *117 Maldon Road, Colchester.*
 Langford, F. C. G., M.A. *35 Alley Park, Dulwich, S.E.*²¹
 Last, H. M., M.A. *St. John's College, Oxford.*
 L Laurand, Dr. L. *37 Boulevard de Tours, Laval (Mayenne), France.*
 Laver, P. G., F.R.C.S., F.S.A. *St. Clare Drive, Colchester.*
 Law, L. E. *Magdalene College House, 1 Oakley Square, N.W.*¹
 Lawrence, Sir A. *49 Marsham Street, S.W.*¹
 Lawson, P. H., F.S.A. *2 Pepper Street, Chester.*
 Leechman, Miss E. M. R. *41 Campden Hill Road, W.*⁸
 Leeper, Alexander, LL.D. *St. Audoen's, Kensington Road, S. Yarra, Melbourne, Australia.*
 Levi, Prof. Mario. *c/o Messieurs Bocca Frères, 3 Via Carlo Alberto, Torino, Italy.*
 Lewer, H. W., F.S.A. *Priors, Loughton, Essex.*
 L Lewis, J. Spedan *c/o Peter Jones, Ltd., Sloane Square, S.W.*¹
 Lewis, Miss M. E. *6 Hillside, S.W.*¹⁹
 Lewis, R. R. *Brentwood School, Essex.*
 Lindley, Miss. *74 Shooter's Hill Road, Blackheath, S.E.*³
 Lindsey, P. E. *c/o National Provincial Bank, South Shields.*
 Livett, Rev. Canon G. M., F.S.A. *Belmont, Wray Park Road, Reigate, Surrey.*
 Lloyd, Prof. J. E., M.A., D.Litt., F.S.A. *Gwaen Deg, Bangor.*
 L Loeb, James. *Hochried, Murnau/Staffelsee, Bavaria.*
 Longbotham, G. F. *378 Lintborpe Road, Middlesbrough.*
 Longden, R. P., M.A. *Christ Church, Oxford.*
 Low, Miss Janet I. *Blebo, Cupar, Fife.*
 Lowe, Miss J. E., M.A. *158 Portsdown Road, Maida Vale, W.*⁹
 Lowndes, Miss. *c/o Mr. James Bain, 14 King William Street, Strand, W.C.*²
 Lowther, A. W. G. *The Old Quarry, Ashted, Surrey.*
- McCulloch, W. *Simon Langton Schools, Canterbury.*
 L Macdonald, Sir George, K.C.B., D.Litt., LL.D., F.B.A. *17 Learmonth Gardens, Edinburgh.*
 L Macdonald, Miss L., M.A. *47 Seymour Street, Portman Square, W.*¹
 McDonell, H. C. M., M.A. *Twyford School, Winchester.*
 Macdonell, The Hon. Sir P. J. *Chief Justice's Chambers, Colombo, Ceylon.*
 McElderry, Prof. R. Knox. *Glenside, Sans Souci Park, Belfast.*
 McEvoy, Rev. C. *'Alesia,' Parkside Drive, Watford, Herts.*
 McIntyre, James. *West View, Bishop Auckland.*
 McLellan, R. D. *74 Hertingfordbury Road, Hertford.*
 Mackail, J. W., M.A., LL.D., F.B.A. *6 Pembroke Gardens, W.*
 L Mackey, Rev. Father Peter Paul, O.P. *Collegio Angelico, 15 Via San Vitale, Rome, Italy*
 L Macmillan, Sir Frederick. *22 Devonshire Place, W.*¹
 Macmillan, George A., D.Litt. *27 Queen's Gate Gardens, S.W.*¹
 Macmillan, W. E. F. *42 Onslow Square, S.W.*⁷
 McMurtrie, Miss B. S. B. *Craigrowan, Kilmacolm, Renfrewshire.*
 L Magie, Prof. David. *101 Library Place, Princeton, New Jersey, U.S.A.*
 Magoffin, Prof. R. V. D. *New York University, University Heights, New York City, U.S.A.*
 Mainguy, A. *Les Roquettes, Guernsey.*
 Makin, Miss Ena, M.A. *116 Willow Avenue, Edgbaston, Birmingham.*

- Manion, Rev. B., M.A. *Cotton College, North Staffs.*
- L** Mardon, A., M.A. *The Rice Institute, Houston, Texas, U.S.A.*
- Marks, Geoffrey, C.B.E. *Union Club, 10 Carlton House Terrace, S.W.¹*
- Marriage, Miss E. G. *62 Pont Street, S.W.¹*
- Marshall, D. W. H., M.A., LL.B., B.Litt. *University of Manitoba, Winnipeg, Canada.*
- Marston, Sir Charles, J.P. *4 Camden Park, Tunbridge Wells.*
- Martin, Alan R. *18 Kidbrook Park Road, S.E.³*
- Matheson, P. E., M.A. *3 Brookside, Headington, Oxford.*
- Mattingly, H., M.A. *British Museum, W.C.¹*
- Maufe, F. B. *15 Hanover House, Regent's Park, N.W.⁸*
- Meade, The Hon. Mrs. Edward.
- Meiggs, R., M.A. *Keble College, Oxford.*
- Meiklejohn, K. W. *25 Knightsbridge Grove, Colne Road, Burnley.*
- Michie, Prof. J. L., M.A. *The University of Queensland, Brisbane, Australia.*
- Mildmay, Dr. E. St. John. *Via Telesio 19, Milan.*
- Miller, S. N., M.A. *15 Doune Terrace, Kelvinside N., Glasgow.*
- Millington, Miss M. V. *30 Peak Hill, Sydenham, S.E.²⁶*
- Mills, Miss Dorothy. *The Brearley School, 610 East 83rd Street, New York, U.S.A.*
- Mills, T. R. *Rockard, Birkhill Avenue, Wormit, Dundee.*
- Milne, J. G., M.A., D.Litt. *20 Bardwell Road, Oxford.*
- Minns, Prof. E. H., Litt.D. *Pembroke College, Cambridge.*
- Mond, Mrs. Angela. *22 Hyde Park Square, W.²*
- Montague, Lt.-Col. L. A. D., J.P., F.R.N.S. *Penton, Crediton, N. Devon.*
- Moon, Miss E. M. *The Gore Hotel, Queen's Gate, S.W.⁷*
- Morcom, Col. Reginald K. *The Clockhouse, Bromsgrove.*
- Morris, W. J., B.A. *6 Bude Terrace, Fleur-de-Lys, Cardiff.*
- Mott, Mrs. R. E. *4 Sedley Taylor Road, Cambridge.*
- Muirhead, A. M. *83 The Limes Avenue, N. Southgate, N.¹¹*
- Muirhead, J. Spencer, LL.B., D.S.O., M.C. *205 St. Vincent Street, Glasgow.*
- Munro, Miss Isabel, B.A. *Lincoln College, Oxford.*
- Munro, J. A. R., M.A. *Lincoln College, Oxford.*
- Murray, Prof. G. G. A., D.Litt., LL.D., F.B.A. *Boar's Hill, Oxford.*
- L** Myres, Prof. J. L., M.A., D.Litt., F.S.A. *The Copse, Hinksey Hill, Oxford.*
- L** Myres, J. N. L., B.A. *Christ Church, Oxford.*

- Nairne, Prof., D.D. *Jesus College, Cambridge.*
- Nash, A. B. *Braemar, 16 Campden Road, South Croydon.*
- Nash-Williams, A. H. *"Olivone," 67 Southwood Road, Ramsgate.*
- Nash-Williams, V. E. *The National Museum of Wales, Cardiff.*
- Newbold, W., O.B.E., H.M.I. *c/o Board of Education, Whitehall, S.W.¹*
- Newman, Miss D. H. *170 Holland Road, W.¹⁴*
- Nock, Prof. A. D., M.A. *Widener Library, Harvard University, Cambridge, Mass. U.S.A.*
- Norris, Miss M. E. *County High School for Girls, Church Hill, Walthamstow, E.⁷*
- North, Lt.-Col. O. H., D.S.O., F.S.A. *Clifford Hall, Yealand Conyers, Carnforth.*
- Norwood, Prof. G. *University College, Toronto, 5, Canada.*

- Oakley, H. C., M.A. *22 Ouseley Road, Balham, S.W.¹²*
- Oliver, J. R., M.D. *The Latrobe Apartments, Read and Charles Streets, Baltimore, U.S.A.*
- O'Neil, B. H. St. J. *Anc. Mons. Dept. (Wales), H.M. Office of Works, Storey's Gate, S.W.¹*

Ormerod, Prof. H. A., M.C., M.A. 25a Falkner Square, Liverpool.
 Oswald, Felix. D.Sc., F.G.S., F.S.A. H.M. Probate Registry, Nottingham.
 Owen, A. S., M.A. Keble College, Oxford.

- Page, D. L. *The Gables*, 108 Albert Road, Caversham Road, Reading.
 Page, T. E., Litt.D. *Charterhouse*, Godalming.
 Pantin, W. E. P., M.A. 17 Dewhurst Road, West Kensington, W.¹⁴
 Parker, H. M. D., M.A. *Magdalen College*, Oxford.
 Parker, Colonel J. W. R., C.B., D.L., F.S.A. *Browsholme Hall*, Clitheroe.
 Partridge, Rev. W. L. *Via Carlo Dolci* 15, Monti Parioli, Roma, Italy.
 Passmore, A. D. *Callas House*, Wanborough, Wilts.
 Paterson, Prof. A. C. *Auckland University College*, Auckland, New Zealand.
 Payne, Major A. A. Laporte. 47 Eton Court, Eton Avenue, N.W.³
 Payne, B. 103 Hyde Park Road, Leeds.
 Peachey, Geoffrey E. *Pook's Hill*, Howe, Sussex.
 Pearce, J. W. E., M.A., F.S.A. 10 Cromwell Place, S.W.⁷
 Pearson, Miss E. R., M.A. 4 Woburn Mansions, Francis Street, W.C.¹
 Penoyre, John, C.B.E. M.A. 8 King's Bench Walk, Inner Temple, E.C.⁴
 Penrose, Dame Emily, M.A., D.C.L. 14a Belsize Park Gardens, N.W.³
L Perram, Charles, M.D. *Norland Court*, 82 Gloucester Place, Portman Square, W.¹
 Perry, F. T. *Beech Close*, Car Colston, Notts.
 Petch, J. A., M.A. *The University*, Manchester.
 Pickard-Cambridge, Prof. A. W., M.A. *The Grange*, Ecclessall, Sheffield.
 Pickering, A. J., F.G.S. *Abbeycraig*, Hinckley, Leics.
 Pickstone, Miss J. 64 Alexander Road, St. John's Wood, N.W.⁸
 Plantin, Rev. H. M., S.J. 59 rue de Bruxelles, Namur, Belgium.
L Platnauer, Maurice, M.A. *Brasenose College*, Oxford.
 Plumptre, E. V. C. *Vaughan Library*, Harrow, Middlesex.
L Plunkett, Count G. N., T.D. 40 Elgin Road, Dublin.
 Pollock, The Rt. Hon. Sir F., Bart., M.A., LL.D., D.C.L., F.B.A., F.S.A. 21 Hyde Park Place, W.²
L Pope, Rev. J. O'Fallon, S.J. *Manresa House*, Roehampton, S.W.¹⁵
 Porter, W. H. *Lehenagh House*, Cork.
 Pratt, E. A. 4 Adelphi Terrace, W.C.²
 Pratt, F. J. Tidd. 22 Balderton Gate, Newark.
 Prescott, H. M. 137 High Lever Road, W.¹⁰
 Preston, A. W. *Bishop's College*, Lennoxville, Quebec, Canada.
 Preston, Miss C. M. *The Warren*, Hayes, Kent.
L Preston, Colonel J. E. c/o Grindlay & Co., 54 Parliament Street, S.W.¹
 Progetti, O. *Ridge Dene*, Box Ridge Avenue, Purley, Surrey.
 Prosser, W. B. *Ardenlee*, Maidstone.
 Pryce, T. Davies, M.R.C.S., F.S.A. *Bramber*, Fletcher Road, Horsell, Surrey.
 Pryor, E. B. *Pilgrims*, Westerham, Kent.
 Purves, J. *Department of Italian*, The University, Edinburgh.
- Radford, C. A. Raleigh, F.S.A. *Bradnich Manor*, Devon.
 Ramsay, A. B., M.A. *Magdalene College*, Cambridge.
 Ramsay, Miss A. M., M.A. *Craigmyle*, Ballater, Aberdeenshire.
L Ramsay, Sir W. M., D.C.L., Litt. D., LL.D., D.D., F.B.A. 32 Wentworth Avenue, Bournemouth.
L Randall, H. J., LL.B., F.S.A. *Erw Graig*, Bridgend, Glamorgan.
 Randall-MacIver, D., M.A., D.Sc. 25 Corso d'Italia, Roma, Italy.
 Randle, E. S. *The Nook*, Priesthills, Hinckley.

- Rann-Kennedy, W. J., M.A. F.R.G.S. 6 *Castle Hill Road, Dover, Kent.*
 Reade, W. H. V., M.A. *Keble College, Oxford.*
 Reckitt, Miss J. 317 *St. James Court, S.W.*¹
 Record, S. P. M.A. *Taunton School, Taunton.*
 Reed, A. E. *Woodhouse Grove School, Apperley Bridge, Nr. Bradford, Yorks.*
 Reed, Miss G. N. *Girls' Grammar School, Watford.*
 Reid, Miss Constance, M.A. 66 *Queen's Gardens, W.*²
 Richards, F. L., Assoc.M.Inst.C.E. *Penryn, Kingsway, Woking, Surrey.*
 Richardson, L. J. D., M.A. *Fernshaw, Lake Road West, Cardiff.*
 Richmond, Ian A., M.A., F.S.A. *Buckley Hill House, Milnrow, Rochdale.*
 Richmond, Prof. O. L., M.A. 5 *Belford Place, Edinburgh.*
 Rickard, T. A. 250 *Tunnel Road, Berkeley, California.*
 Rickatson-Hatt, Bernard. 39 *Orchard Court, Portman Square, W.*¹
 Roberts, Miss D. G., M.A. *County Girls' School, Bishop Auckland, Durham.*
 Roberts, J. Slingsby, 3 *Powis Villas, Brighton.*
 Robertson, Prof. D. S., M.A. *Trinity College, Cambridge.*
 Robertson, Prof. L. *University of British Columbia, Vancouver, B.C.*
 Robin, C. E. 27 *Claremont Road, E.*⁷
 Robinson, Prof. C. A., Jr. 63 *Angell Street, Providence, R.I., U.S.A.*
 L Robinson, E. S. G., M.A. 23 *Upper Phillimore Gardens, W.*⁸
 Rodd, The Rt. Hon. Sir Rennell, G.C.M.G., G.C.V.O., C.B. 25 *Cavendish Square, W.*¹
 Roeber, A. D. *Eckington Villa, London Road, Reigate, Surrey.*
 L Romans, The Rev. Thomas. *St. Mark's Vicarage, Sunderland.*
 Roos, Dr. A. G. 7 *Waterloolaan, Groningen, Holland.*
 Rose, Prof. H. J., M.A. *Edgecliff East, The Scores, St. Andrews, Fife.*
 Rouse, W. H. D., M.A., Litt.D. *Histon Manor, Cambridge.*
 Rushforth, G. McN, M.A., F.S.A. *Riddlesden, Malvern Wells.*
 Russell, Miss Agnes. *Maltese Lodge, Chelmsford.*
- Salisbury, F. S., M.A. *Dorset House, Ashford, Middlesex.*
 Salmon, E. T., M.A. *McMaster University, Hamilton, Ont., Canada.*
 Sands, P. C., M.A. *Pocklington School, East Yorks.*
 Sargent, Major L. C. *Up Pantiles, Westgate-on-Sea.*
 Saunders, G. F. *Ngaere, Stratford, N.Z.*
 Sayce, Prof. A. H., D.Litt., Litt.D., LL.D., D.D. 8 *Chalmers Crescent, Edinburgh.*
 L Scarth, Miss W. G. 97¹⁰ *Cadogan Gardens, S.W.*³
 Scott, J. E., M.C., M.A. *West Haring Cottage, Petersfield.*
 Scullard, H. H. 52 *Foscote Road, Hendon, N.W.*⁴
 Seltman, C. T., M.A., F.R.N.S. 39 *Barton Road, Cambridge.*
 Semple, Prof. Patrick, M.A. *Earlsfort Terrace, University College, Dublin.*
 Seymour, P. A., M.A. *Jesus College, Oxford.*
 Sharpe, Sir Montagu, K.C. D.L. *Brent Lodge, Hanwell, W.*
 Sheepshanks, A. C. *Eton College, Windsor.*
 Sheppard, J. T., M.A. Litt.D. *King's College, Cambridge.*
 Sherman, Prof. C. P., D.C.L., LL.D. 3430 *34th Street, N.W., Washington, U.S.A.*
 Sherwin, G. A. *Bramford, Cypress Road, Newport, I. of Wight.*
 Shields, Mrs. van Alien. 9 *rue Spontini, Paris (xvi^e), France.*
 Simpson, F. G., M.A., Hon.F.S.A. (Scot.). 45 *Fern Avenue, Newcastle-on-Tyne.*
 Sisson, M. A. *Hucclecote, Near Gloucester.*
 Skeat, T. C. *Romelandfield, Ramsbury Road, St. Albans.*
 Sleeman, J. H., M.A. *Malabide, Englefield Green, Surrey.*
 Sloane, Miss E. J. 8 *University Road, Leicester.*
 Smith, A. H., C.B., M.A., F.B.A., F.S.A. 2 *Balfour Road, Weybridge, Surrey.*
 Smith, Miss A. I. S. *West Leeds High School, Whingate, Leeds.*

- Smith, A. T. Shorthose. 'Fernleigh,' Syston, Nr. Leicester.
 Smith, Miss Constance, B.A. 170 Holland Road, W.¹⁴
 Smith, Jabez. *Lloyds Bank Ltd.*, 71 Lombard Street, E.C.³
 Smith, W. K. *Cowan House, George Square, Edinburgh.*
 Snyder, Prof. G. A. S. *Allard Pierson Stichting, Weesperzyde, 33, Amsterdam, Holland.*
 Somerset, E. J. 20 *Dulwich Common, S.E.*²¹
 Somerville, R., B.A. 50 *Norfolk Square, W.*²
 Souter, Prof. A., M.A., D.Litt., D.D., F.B.A. 9 *College Bounds, Aberdeen.*
 Sparrow, John. *All Souls College, Oxford.*
 Spence, J. E., M.B., Ch.B., D.P.H. 15 *Monton Green, Eccles, Lancs.*
 Staines, E. A. *Controller of Posts and Telegraphs, Penang, Straits Settlements.*
 Stannard, Harold, M.A. 50 *Russell Square, W.C.*¹
 Stevens, C. E., B.A. *c/o Messrs. Peitch & Co., 42 Bedford Row, W.C.*¹
 Stevens, C. G., B.A. *Mkushi, Luangwa Province, N. Rhodesia, S.A.*
 Stevens, P. T. *Kinnoull, Shelford Road, Trumpington, Cambridge.*
 Stevenson, G. H., M.A. *University College, Oxford.*
 Stewart, Principal H. *University College, Nottingham.*
 Stewart, Prof. J. A., LL.D. *Christ Church, Oxford.*
 Stewart, J. R. B. *Trinity Hall, Cambridge.*
 Stewart, Miss K. F. 71 *Aberdare Gardens, N.W.*⁶
 Stinton, T., M.A. *The High School, Newcastle, Staffs.*
 Strangeways, L. R., M.A. *The Grammar School, Bury, Lancs.*
 Strong, Mrs. S. Arthur, LL.D., Litt.D., F.S.A. 35 *Via Balbo, Rome, Italy.*
 Strudwick, Miss Ethel, M.A. *St. Paul's Girls' School, Brook Green, Hammersmith, W.*⁶
 L Sutcliffe, Rev. E. F., S.J. *Heythrop Hill, Chipping Norton, Oxon.*
 Sutherland, C. H. V. 20 *Walton Street, Oxford.*
 Swithinbank, B. W., I.C.S. *c/o Thomas Cook & Son, Rangoon, Burma.*
 L Syme, Ronald, M.A. *Trinity College, Oxford.*

- Tandy, F. 75 *Palace Road, Tulse Hill, S.W.*²
 Tarn, W. W. *Muirtown, Nr. Inverness.*
 Taylor, H. M. 64 *Brockenhurst Road, Ward End, Birmingham.*
 Taylor, J. E., M.A., B.Litt. *Tonbridge School, Tonbridge.*
 Taylor, Prof. L. R. *Law Buildings, Bryn Mawr College, Pa., U.S.A.*
 Taylor, Miss M. V., M.A., F.S.A. 45 *Woodstock Road, Oxford.*
 Taylor, W. G. 34 *High Oaks Road, Welwyn Garden City, Herts.*
 Thompson, J., M.A. 28, *St. Ledgers Road, Bournemouth.*
 L Tod, Marcus N., M.A. *Oriel College, Oxford.*
 Towers, R. M., M.A. *The College, Cheltenham.*
 Townsend, Prof. P. W. 1200 *E. First Street, Bloomington, Ind., U.S.A.*
 Toynbee, Prof. Arnold J., M.A. 3 *Melina Place, St. John's Wood, N.W.*⁸
 Toynbee, Miss Jocelyn, D.Phil. *Newnham College, Cambridge.*
 Trendall, A. Dale. 37 *Alpha Road, Cambridge.*

- Van Buren, Prof. A. W. *American Academy, Porta S. Pancrazio, Rome, Italy.*
 Van Essen. C. C. *Museum, Carnegie Lane, Hague, Holland.*
 Vaughan, W. W., M.A. *The Lodge, Rugby School, Rugby.*
 Vogel, C. E. 11 *Parsifal Road, N.W.*⁶.

- Wackernagel, Prof. J. 93 *Gartenstrasse, Basle, Switzerland.*
 Walker, R. H. *Hillbrow 4, Rugby.*
 Walker, W. G., M.A. *Crosby House, Oundle, Peterborough.*
 Wallace, W. Reeve. 4 *Waverton Street, W.*¹

- Wallis, Mrs. A. *Morland, Darlington.*
 Wallis, D. E., B.A. 25 *Sutherland Road, West Ealing, W.*¹³
 Walton, C. S., B.A. *St. John's Rectory, March, Cambs.*
 Ward, W. W. *Merchants' Hall, Bristol.*
 Warren, Miss. *Hendra, Forest Town, Mansfield, Notts.*
L Watson, Rev. Prof. E. W., D.D. *Christ Church, Oxford.*
 Watson, J. M. H. *Fort-les-Bains, Amélie-les-Bains, Pyrénées Orientales, France.*
 Watson, W. Crum. *Northfield, Balerno, Midlothian.*
 Webb, Prof. Clement C. J., M.A., F.B.A. *Walnut Tree House, Marston, Nr. Oxford.*
 Weber, F. Parkes, M.D. F.S.A. 13 *Harley Street, W.*¹
 Webster, Miss M. G. *Alexandra College, Westcliff-on-Sea.*
 Weber, Prof. T. B. L. 15 *Rusholme Gardens, Manchester.*
 Weddell, A. W. *Virginia House, Windsor Farme, Richmond, Virginia, U.S.A.*
 Weech, W. N., M.A. *Greenfields, The Park, Cheltenham.*
 Weekes, C. A. 31 *Cannon Hill, London, N.W.*⁶
L Westland, F. C., Lt.-Col. R.E. *c/o Lloyds Bank, Cox's and King's Branch, 6 Pall Mall S.W.*¹
 Whatley, N., M.A. *Clifton College, Bristol.*
 Wheeler, R. E. Mortimer, D.Litt., F.S.A. *London Museum, Lancaster House, St. James's, S.W.*¹
 Whitehead, G. O. 26 *Pelham Crescent, S.W.*⁷
 Whiteley, S. *University College, Colombo, Ceylon.*
L Whittick, G. Clement, M.A. *Armstrong College, Newcastle-on-Tyne.*
 Whitney, Rev. Prof. J. P. D.D. *Emmanuel College, Cambridge.*
 Whitty, R. T. V. *Lancaster House School, Cumberland Park, Acton, W.*³
 Wilkins, Miss Mary, M.A. 64 *Stanwell Road, Ashford, Middlesex.*
L Willans, J. B. *Dolforgan, Kerry, Montgomeryshire.*
 Williams, Miss G. H. *The College, Pontypool, Mon.*
L Williams, R., M.C. M.A. *The Grammar School, Cowbridge, Glam.*
 Williams, Rev. W. Coleman. *Caerwent Vicarage, Caerwent, nr. Chepstow*
 Williams, Walter N., M.A., LL.B. *Sekwyn College, Cambridge.*
 Williamson, Prof. H., M.A. 34 *Southway, N.W.*¹¹
 Williamson, S. C. W., B.A. 37 *Douglas Avenue, Whitstable, Kent.*
 Wilson, F. H. 18 *Parkfield Avenue, Bradford Moor, Bradford, Yorks.*
 Wilson, Major H. C. B. *Crofton Hall, Crofton, Wakefield.*
 Winbolt, S. E., M.A. *Aclea, Worthing Road, Horsham.*
L Wood, J. C., B.A. 4 *Carlisle Place, Bradford.*
 Wood, Miss M. E. 1 *Devonshire Street, Portland Place, W.*¹
 Woodward, A. M., M.A. 395 *Fulwood Road, Ranmoor, Sheffield.*
 Woolley, C. L., M.A.
 Woolley, Ernest, F.S.A. *Collingworth, Lemsford Road, St. Albans.*
L Worley, Miss M. L., M.A. *Quarry Field Cottage, London Road, Headington, Oxford.*
 Wormald, R. Douglas, M.A. 101 *Droitwich Road, Worcester.*
 Wright, W. E. 14 *Wilbury Road, Hove, Sussex.*

 Yapp, Miss M. G. *The Friends' School, Saffron Walden, Essex.*
 Yorath, Miss E. L. 9 *Elliston Terrace, Carmarthen, S. Wales.*
L Young, Miss A. M. 25a *St. John's Park, Blackheath, S.E.*³
 Young, G. M. *All Souls College, Oxford.*

Zvegintzov, Mrs. Michael. 34 *S. Peter's Square, Hammersmith, W.*⁶

TOPOGRAPHICAL INDEX TO THE LIST OF MEMBERS

BERKSHIRE

Anderson, Prof. W. C. F.
Gardner, Prof. E. A.
How, F. W.
Page, D. L.
Prosser, W. B.

BUCKINGHAMSHIRE

Ashmole, Prof. B.
Berry, Sir J.
Chitty, Rev. G. J.
Haddon, G. M.
Hemp, W. J.
Sheepshanks, A. C.

CAMBRIDGESHIRE

Abbot, E.
Adcock, Prof. F. E.
Brooke, Rev. A. E.
Buckland, Prof. W. W.
Bury, G.
Charlesworth, M. P.
Cook, Prof. A. B.
Cornford, Prof. F. M.
Duff, J. D.
Edmonds, J. M.
Ellis, K. H.
Gardner, R.
Giles, P.
Greenwood, L. H. G.
Harrison, E.
Heitland, W. E.
Housman, Prof. A. E.
Hulbert-Powell, Rev. C. L.
Minns, Prof. E. H.
Mott, Mrs. R.
Nairne, Prof.
Ramsay, A. B.
Robertson, Prof. D. S.
Rouse, W. H. D.
Seltman, C. T.
Sheppard, Dr. J. T.
Stevens, P. T.
Stewart, J. R. B.
Toynbee, Dr. J.
Trendall, A. D.
Walton, C. S.
Whitney, Rev. Prof. J. P.
Williams, W. N.

CHESHIRE

Baty, C. F.
Danson, J. R.

Halstead, Major H. D.
Horn, T.
Johnson, Miss L. A.
Jones, R. L. W.
Lawson, P. H.

CORNWALL

Coate, Miss D.
Hill, Miss L. C. J.

CUMBERLAND

Collison, C.
Fair, Miss M. C.
Hopkinson, Rev. Canon J. H.

DEVONSHIRE

Fletcher, F.
Gordon, Miss M. L.
Montague, Lt.-Col. L. A. D.
Radford, C. A. R.

DURHAM

Body, L. A.
Chapman, C. S.
Lindsey, P. E.
Roberts, Miss D. G.
Romans, Rev. T.
Wallis, Mrs. A.

ESSEX

Buxton, D. A. J.
Lamb, E. C.
Laver, P. G.
Lewer, H. W.
Lewis, R. R.
Russell, Miss A.
Yapp, Miss M. G.

GLOUCESTERSHIRE

Baddeley, St. C.
Baker, A. B. L.
Bevan, E. J.
Brice-Smith, R.
Coleman, W. H.
Judson, W.
Key, C. E.
Sisson, M. N.
Towers, R. M.
Ward, W. W.
Weech, W. N.
Whatley, N.

HAMPSHIRE

Armstrong, G. C.
Barton, Mrs. W. J.
Constantine, M. H.
Dunsford, E.
Forsy, G. F.
Green, G. E.
Harper, C.
McDonnell, H. C.
Ramsay, Sir W. M.
Scott, J. E.
Thompson, J.

ISLE OF WIGHT

Sherwin, G. A.

HEREFORDSHIRE

Crees, Dr. J. H. E.

HERTFORDSHIRE

Bensley, Prof. E.
Blore, W. P.
Carrington, R. C.
Clauson, Sir Charles.
Conway, Prof. R. S.
Dolling, H. W.
Hall, Miss M. L.
McEvoy, Rev. C.
McLellan, R. D.
Reed, Miss G. N.
Skeat, T. C.
Taylor, W. G.
Woolley, E.

KENT

Barratt, T. H.
Burnside, Rev. Canon W. F.
Clove, F. A.
Hall, Mrs. W. L.
Jones, Surg. Capt. K. H.
McCulloch, W.
Marston, Sir C.
Nash-Williams, A. H.
Parish, A.
Pryor, E. B.
Rann-Kennedy, W. J.
Sargent, Major L. C.
Taylor, J. E.
Webster, Miss M. G.
Williamson, S. C. A.

LANCASHIRE

Anderson, Prof. W. B.
Atkinson, Prof. D.
Barlow, Miss A. E. F.
Boyce, S. M.
Brown, A. T.

LANCASHIRE—*contd.*

Clifton, F. W. V.
 Cole, S. C.
 Davison, J. A.
 Droop, Prof. J. P.
 Fletcher, G. B. A.
 Jenkin, Miss I. A.
 Meiklejohn, K. W.
 North, Lt.-Col. O. H.
 Ormerod, Prof. H. A.
 Parker, Col. J. W. R.
 Petch, J. A.
 Richmond, I. A.
 Spence, J. E.
 Strangeways, L. R.
 Webster, Prof. T. B. L.

LEICESTERSHIRE

Crocker, A. J.
 Hacking, T. B.
 Pickering, A. J.
 Randle, E. S.
 Sloane, Miss E. J.
 Smith, A. T. S.

LINCOLNSHIRE

Franks, P.
 Hoyle, Miss A. M.
 Wilson, Mrs. G. M.

LONDON POSTAL
DISTRICT

Adams, P. H.
 Alford, Miss
 Anderson, R. H.
 Andrews, P. M.
 Austin, E. H.
 Bagenal, H.
 Baker, G. P.
 Balfour, Hon. J. M.
 Barrow, R. H.
 Bentinck, F. C.
 Bettoney, H.
 Blomfield, Sir R.
 Brogan, Mrs. O. P.
 Brown, W. B.
 Brunyate, Mrs. R.
 Brydges, E. E. H.
 Bushe-Fox, J. P.
 Butler, Prof. H. E.
 Callaghan, Rev. T. T.
 Caroë, W. D.
 Carthew, Miss.
 Cary, Dr. M.
 Chipper, Miss R.
 Cleminson, F. J.
 Colegate, A.
 Compton, E. G.
 Cornford, H.
 Culley, Mrs.
 Daniel, A. M.
 Davis, S. C. H.
 Dickson, Mrs. G.
 Edge, C. T.
 Egerton-Warburton, W.
 Evans, Sir E. V.
 Evans, Lady.

Fletcher, Sir B.
 Francis, A. G.
 Frazer, Sir J. G.
 Gair, Mrs. H. B.
 Gardner, Prof. E. G.
 Giveen, R. L.
 Gloyne, Miss E. R.
 Gooch, G. P.
 Hare, W. L.
 Harris, Miss A.
 Hawkes, C. F. C.
 Hill, Dr. G. F.
 Hinks, R.
 Hiorns, F. R.
 Hodge, H.
 Holland-Martin, R.
 Holmes, Dr. T. Rice.
 Home, Major G.
 Hose, W.
 Hotson, J. E. B.
 Impey, M. E.
 Jarrett, E. R.
 Jayasuriya, F. B. P.
 Jex-Blake, Miss K.
 Jones, R. P.
 Keiller, A.
 Kelland, G. T.
 Klein, W. G.
 Langford, F. C.
 Law, L. E.
 Lawrence, Sir. A.
 Leechman, Miss E. M. R.
 Lewis, J. S.
 Lewis, Miss M. E.
 Lindley, Miss.
 Lowe, Miss J. E.
 Lowndes, Miss.
 MacDonald, Miss L.
 Mackail, Dr. J. W.
 Macmillan, Sir F.
 Macmillan, Dr. G. A.
 Macmillan, W. E. F.
 Marks, G.
 Marriage, Miss E. G.
 Martin, A. R.
 Mattingly, H.
 Maufe, F. B.
 Millington, Miss M. V.
 Mond, Mrs. A.
 Moon, Miss E. M.
 Muirhead, A. M.
 Newbold, W.
 Newman, Miss D. H.
 Norris, Miss M. E.
 Oakley, H. C.
 O'Neil, B. H. St. J.
 Pantin, W. E.
 Payne, Major A. A. L.
 Pearce, J. W.
 Pearson, Miss E. R.
 Penoyre, J.
 Penrose, Dame E.
 Perram, Dr. C.
 Pickstone, Miss J.
 Pollock, Rt. Hon. Sir F.
 Pope, Rev. J. O'F.
 Pratt, E. A.
 Prescott, H. M.
 Preston, Miss C. M.

Preston, Col. J. E.
 Reckitt, Miss J.
 Reid, Miss C.
 Rickatson-Hatt, B.
 Robinson, E. S. G.
 Rodd, the Rt. Hon. Sir R.
 Robin, C. E.
 Scarth, Miss W. G.
 Scullard, H. H.
 Sharpe, Sir M.
 Smith, Miss C.
 Smith W. K.
 Somerset, E. J.
 Somerville, R.
 Stannard, H.
 Stevens, C. E.
 Stewart, Miss K. F.
 Strudwick, Miss E.
 Tandy, F.
 Toynbee, Prof. A. J.
 Vogel, C. E.
 Wallace, W. R.
 Wallis, D. E.
 Weber, Dr. F. P.
 Weekes, C. A.
 Westland, Lt.-Col. F. C.
 Wheeler, Dr. R. E. M.
 Whitehead, G. O.
 Whitty, R. T. V.
 Williamson, Prof. H.
 Wood, Miss M. E.
 Young, Miss A. M.
 Zvegintzov, Mrs. M.

MIDDLESEX

Baynes, Prof. N. H.
 Butler, H.
 Collander-Brown, W. H.
 Hopkins, G. B. J.
 Jelf, E. A.
 Plumptre, E. V. C.
 Salsbury, F. S.
 Wilkins, Miss M.

MONMOUTHSHIRE

Williams, Rev. W. C.

NORFOLK

Hogan, Rev. W. K. P.

NORTHAMPTONSHIRE

Walker, W. G.

NORTHUMBERLAND

Aitchison, W. de L.
 Birley, E. B.
 Blair, C. H. Hunter.
 Bosanquet, R. C.
 Brewis, W. P.
 Charlton, J.
 Duff, Prof. J. W.
 Hedley, W. P.
 Simpson, F. G.
 Whittick, G.

NOTTINGHAMSHIRE

Oswald, Dr. F.
 Perry, F. T.
 Pratt, F. J. Tidd.
 Stewart, Principal.
 Stinton, T.
 Warren, Miss.

OXFORDSHIRE

Allen, P. S.
 Anderson, Prof. J. G. C.
 Bailey, C.
 Balsdon, J. P. V. D.
 Barber, E. A.
 Benecke, P. V. M.
 Bowra, C. M.
 Braunholtz, Prof. G. E. K.
 Buckler, W. H.
 Clark, Prof. A. C.
 Collingwood, R. G.
 Compton, E. G.
 Cookson, C.
 Corley, F. E.
 Cox, C. W. M.
 Craster, Dr. H. H. E.
 de Zulueta, Prof. F.
 Dodgson, Miss J. C.
 Drake, H. L.
 Drummond, Rev. W. H.
 Evans, Sir A. J.
 Gardner, Prof. P.
 Genner, E. E.
 Harden, D. B.
 Hignett, C.
 Hodgkin, R. H.
 Holmes, M.
 Holroyd, M. T.
 How, W. W.
 Knight, W. F. J.
 Last, H. M.
 Longden, R. P.
 Matheson, P. E.
 Meiggs, R.
 Milne, Dr. J. G.
 Munro, Miss I.
 Munro, J. A. R.
 Murray, Prof. G. G. A.
 Myres, Prof. J. L.
 Myres, J. N. L.
 Owen, A. S.
 Parker, H. M. D.
 Platnauer, M.
 Reade, W. H. V.
 Seymour, P. A.
 Sparrow, J.
 Stevenson, G. H.
 Stewart, Prof. J. A.
 Sutcliffe, Rev. E. F.
 Sutherland, C. H. V.
 Syme, R.
 Taylor, M. V.
 Tod, M. N.
 Watson, Rev. Prof. E. W.
 Webb, Prof. C. C. J.
 Worley, Miss M. L.
 Young, G. M.

SHROPSHIRE

Chance, A. F.
 Knapton, Rev. A. J.

SOMERSET

Bothamley, C. H.
 Bridge, J. J. R.
 Dalton, O. M.
 Record, S. P.

STAFFORDSHIRE

Gregory, Miss A. M.
 Harris, L. C.
 Manion, Rev. B.

SUFFOLK

Corin, E.

SURREY

Bailey, W. O.
 Bevan, E. R.
 Blackman, Mrs. I. E. S.
 Bruce-Clarke, Miss.
 Burdon, Rev. R. J.
 Burl, D. A.
 Butcher, Surg. Lt.-Com., W. H.
 Chitty, Rev. G. J.
 Coleman, R. H. F.
 Constable, H. L.
 Cotton, A. R.
 Freshfield, E. H.
 Gardner, E.
 Henderson, Miss A. M.
 Kenyon, Sir F. G.
 Livett, Rev. Canon.
 Nash, A. B.
 Page, T. E.
 Progetti, O.
 Pryce, T. D.
 Richards, F. L.
 Roeber, A. D.
 Sleeman, J. H.
 Smith, A. H.

SUSSEX

Baden, Miss M. F.
 Billson, C. J.
 Bulwer, Miss.
 Bulwer, Miss D. E.
 Freshfield, D.
 Greenwood, J. A.
 Hill, Miss M. V.
 Peachey, G. E.
 Roberts, J. S.
 Winbolt, S. E.
 Wright, W. E.

WARWICKSHIRE

Asquith, Capt. R. J.
 Barnett, T. G.
 Farquhar, J.
 Makin, Miss E.
 Taylor, H. M.
 Vaughan, W. W.
 Walker, R. H.

WILTSHIRE

Cunnington, Mrs. M. E.
 Passmore, A. D.

WORCESTERSHIRE

Baldwin, Rt. Hon. S.
 Hodgkinson, H. R.
 Knowles, W. H.
 Morcom, Col. R. K.
 Rushforth, G. Mc.N.
 Wormald, R. D.

YORKSHIRE

Barran, Sir J.
 Beevor, Miss J. H.
 Bibby, E. E.
 Box, H.
 Brigg, W. A.
 Cannan, F. G.
 Connall, Prof. B.
 Corder, P.
 Craig, J. D.
 Dodd, E. E.
 Hornsby, W.
 Kirk, J. L.
 Kitson-Clark, Miss M.
 Longbotham, G. F.
 Lowther, A. W. G.
 Payne, B.
 Pickard-Cambridge, Prof. A. W.
 Reed, A. E.
 Sands, P. C.
 Smith, Miss A. I. S.
 Smith, J.
 Wilson, F. H.
 Wilson, Major, H. C. B.
 Wood, J. C.
 Woodward, A. M.

WALES

Baillie-Reynolds, P. K.
 Bowen, H. C.
 Elsworth, W. L.
 Fox, Dr. C.
 Gardner, Dr. W.
 Grundy, Prof. W. W.
 Hunt, J.
 James, Rev. J. W.
 Jones, E. P.
 Jones, Principal H. S.

WALES—*contd.*

Lloyd, Prof. J. E.
 Morris, W. J.
 Nash-Williams, V. E.
 Randall, H. J.
 Richardson, L. J. D.
 Willans, J. B.
 Williams, Miss G. H.
 Williams, R.
 Yorath, Miss E. L.

SCOTLAND

Batchelor, F.
 Brown, J.
 Calder, Prof. W. M.
 Carswell, R. L. S.
 Curle, J.
 Fleming, Miss H. J.
 Giles, A. F.
 Hannah, I. C.
 Henderson, T.
 Jardine, Miss L.
 Low, Miss J. I.
 McCulloch, Miss J. G.
 MacDonald, Sir G.
 McMurtrie, Miss B. S. B.
 Miller, S. N.
 Mills, T. R.
 Muirhead, J. S.
 Purves, J.
 Ramsay, Miss A. M., M.A.
 Richmond, Prof. O. L.
 Rose, Prof. H. J.
 Sayce, Prof. A. H.
 Tarn, W. W.
 Watson, W. C.

IRELAND

Alton, Prof. E. H.
 Gardiner, Miss M. A.
 Henry, Prof. R.
 McElderry, Prof. R. K.
 Plunkett, Count G. N.
 Porter, W. H.
 Semple, Prof. P.

CHANNEL ISLANDS

Burrows, Major P. W.
 Mainguy, E.

ABROAD :

EUROPE

Bagnani, G. *Italy.*
 Benn, Mrs. A. *Italy.*
 Blegen, Mrs. C. *Greece.*
 Cagnat, Prof. R. *France.*
 Cumont, Prof. L. *Italy.*
 De Sanctis, Prof. G. *Italy.*
 Deubner, Prof. L. *Germany.*
 Estebrich, J. *Spain.*
 Fabricius, Dr. E. *Germany.*
 Gulbenkian, N. S. *France.*
 Hallam, Mrs. *Italy.*
 Hill, Mrs. B. H. *Greece.*
 Hyde, J. H. *France.*
 Kubitschek, Dr. W. *Austria.*
 Laurand, Dr. L. *France.*
 Levi, Prof. M. *Italy.*
 Loeb, J. *Germany.*
 Mackey, Rev. P. P. *Italy.*
 Mildmay, Dr. E. St. J. *Italy.*
 Partridge, Rev. W. L. *Italy.*
 Plantin, Rev. H. M.
 Randall-McIver, Dr. *Italy.*
 Roos, Dr. A. G. *Holland.*
 Shields, Mrs. Van. A. *France.*
 Snyder, Prof. G. A. S. *Holland.*
 Strong, Mrs. S. A. *Italy.*
 Van Buren, Prof. A. W. *Italy.*
 Van Essen, C. C. *Holland.*
 Wackernagel, Prof. J. *Switzerland.*
 Watson, J. M. H. *France.*

AFRICA

Fremantle, Miss I. M. E.
 Howard, E. C. *Algiers.*
 Jones, A. M. *Egypt.*
 Stevens, C. G.

CANADA

Ecob, P. E.
 Jolliffe, Prof. R. O.
 Marshall, D. W. H.
 Norwood, Prof. G.
 Preston, A. W.
 Robertson, Prof. L.
 Salmon, E. T.

ABROAD :

U. S. A.

Begg, W. R.
 Brett, Mrs. A. B.
 Bush, W. T.
 Capps, Prof. E.
 Dean, Prof. L. R.
 Fitzhugh, Prof. T.
 Frank, Prof. T.
 Hirst, Prof. G. M.
 Johnston, W. R.
 Knapp, Prof. C.
 Magie, Prof. D.
 Magoffin, Prof. R. V. D.
 Mardon, A.
 Mills, Miss D.
 Nock, Prof. A. D.
 Oliver, J. R.
 Rickard, T. L.
 Robinson, Prof. C. A., Jr.
 Rostovtzeff, Prof. M.
 Sherman, Prof. C. P.
 Taylor, Prof. L. R.
 Townsend, Prof. P. W.
 Weddell, A. W.

ASIA

Burn, Lt.-Col. A. H.
 Fell, Rev. R. A. L. *India.*
 Macdonell, The Hon. Sir P. J.
 Ceylon.
 Staines, E. A. *F.M.S.*
 Swithinbank, B. W. *Burma.*
 Whiteley, S. *Ceylon.*

AUSTRALIA AND NEW
ZEALAND

Leeper, Dr. A.
 McIntyre, J.
 Michie, Prof. J. L.
 Paterson, Prof. A. C.
 Saunders, G. F.

STUDENT-ASSOCIATES

- Allen, D. F. 8 *Camberland Road, Kew Gardens, W.*
 Bendle, J. F., B.A. 117 *Bawtry Road, Tinsley, Sheffield.*
 Chilver, G. E. F., B.A. 28 *Sussex Gardens, W.*²
 Clarke, R. R. 12 *St. Philip's Road, Norwich.*
 Cooper, M. du P. *St. Edmund Hall, Oxford.*
 Eggleshaw, J. H. 61 *Buckland Road, Doncaster.*
 Eliot, G. V. 20 *Mowbray Road, Upper Norwood, S.E.*¹⁹
 Elliott, W. R. *Red House, North Drive, Ruislip, Middlesex.*
 Howard, Nesta. *Girton College, Cambridge.*
 Hughes, William. *The Causeway, Bishop's Stortford, Herts.*
 Humphreys-Davies, G. P. *Southfields, Saffrons Road, Eastbourne.*
 Kidd, J. C. 17 *Argyle Street, Dundee.*
 Lees, S. C. *New College, Oxford.*
 Mackay, G. E. 136 *Court Lane, Dulwich, S.E.*²¹
 Nicol, Miss A. T. 23 *Grosvenor Place, Aberdeen.*
 Owen, R. M. *Beaumont, Seaton Carew, Co. Durham.*
 O'Donovan, Miss A. 15 *Denver Road, N.*¹⁶
 Parker, Critchley. 28 *Tivoli Place, Pant Hill, South Yarra, Melbourne, Victoria, Australia.*
 Perkins, J. B. Ward. 2 *Bickley Road, Bromley, Kent.*
 Phillimore, H. J. 16A *Oxford Square, W.*²
 Savory, H. N. 10 *Hilltop Road, Oxford.*
 Steer, G. L. *Christ Church, Oxford.*
 Stephens, D. *Coxwell Street, Cirencester.*
 St. Joseph, J. K. 60 *Malvern Road, Worcester.*
 Wade, W. O. 9 *Rossington Road, Endcliffe, Sheffield.*
 Wood, L. E. 4 *York Road, Rochester.*

LIBRARIES SUPPLIED UNDER COPYRIGHT ACT

- CAMBRIDGE: The University Library.
 OXFORD: The Bodleian Library.
 DUBLIN: The Library of Trinity College.
 EDINBURGH: The Advocates' Library.
 ABERYSTWYTH: The National Library of Wales.
 LONDON: The British Museum, Copyright Office, W.C.¹

SUBSCRIBING LIBRARIES AND INSTITUTIONS

GREAT BRITAIN AND IRELAND

- ABERDEEN** : The Library of the University, *Aberdeen*.
ABERYSTWYTH : The Library of the University College of Wales, *Aberystwyth*.
ALDENHAM : The Library of Aldenham School, *Elstree, Herts*.
AMPLEFORTH : The Library of Ampleforth Abbey, *York*.
BANGOR : The Library of University College of North Wales, *Bangor*.
BELFAST : The Library of the Queen's University, *Belfast*.
BIRMINGHAM : The Birmingham Archaeological Society, *Birmingham*.
BIRMINGHAM : The Central Free Library, *Birmingham*.
BIRMINGHAM : The University Library, *Birmingham*.
BRADFORD : The Central Library, *Bradford*.
BRIGHTON : The Public Library, *Brighton*.
BRISTOL : The Library of the University, *Bristol*.
CAMBRIDGE : The Library of Emmanuel College, *Cambridge*.
CAMBRIDGE : The Library of King's College, *Cambridge*.
CAMBRIDGE : The Library of Newnham College, *Cambridge*.
CAMBRIDGE : The Library of St. John's College, *Cambridge*.
CAMBRIDGE : The Museum of Classical Archaeology, *Cambridge*.
CAMBRIDGE : Trinity College Library, *Cambridge*.
CARDIFF : The Central Library, *Cardiff*.
CARDIFF : The National Museum of Wales, *Cardiff*.
CARDIFF : The University College of South Wales, *Cardiff*.
CHARTERHOUSE : The Library of Charterhouse School, *Godalming*.
CHESTER : Chester and N. Wales Archaeological Society, *Chester*.
COLCHESTER : The Library of the Corporation Museum, *Colchester*.
DERBY : The Public Library, *Derby*.
DUBLIN : The King's Inns Library, *Dublin*.
DUBLIN : The National Library of Ireland, *Dublin*.
DUNDEE : The Albert Institute and Victoria Galleries, *Dundee*.
DUNDEE : The Library of University College, *Dundee*.
DURHAM : The Library of the University, *Durham*.
EDINBURGH : The Public Library, *Edinburgh*.
EDINBURGH : The Royal Scottish Museum, *Edinburgh*.
EDINBURGH : The Signet Library, *Edinburgh*.
EDINBURGH : The Library of the University, *Edinburgh*.
ENGLEFIELD GREEN, SURREY : The Royal Holloway College, *Englefield Green*.
ETON : The Library of Eton College, *Windsor*.
GALWAY : The Library, University College, *Galway*.
GLASGOW : The Library of Baillie's Institution, *Glasgow*.
GLASGOW : The Mitchell Library, *Glasgow*.
GLASGOW : The Library of the University, *Glasgow*.
GLOUCESTER : The Bristol and Gloucestershire Archaeological Society, The Public Library, *Gloucester*.
HAWARDEN : St. Deiniol's Library, *Hawarden*.
HUDDERSFIELD : The Public Library, *Huddersfield*.
HULL : The Central Public Library, *Hull*.
HULL : The Municipal Museum, *Hull*.
HULL : University College Library, *Hull*.
LEEDS : The Library, Commercial Street, *Leeds*.
LEEDS : The Library of the University, *Leeds*.
LEICESTER : The Library of Wyggeston Boys' School, *Leicester*.
LIVERPOOL : The Library of the University, *Liverpool*.
LIVERPOOL : The Public Library, William Brown Street, *Liverpool*.

- LLANELLY : The Classical Master, Gwendraeth Valley Secondary School, *Drefach, Nr. Llanelly.*
- LONDON : The Library of the Athenaeum Club, *London.*
- LONDON : The Department of British and Medieval Antiquities, British Museum, *London.*
- LONDON : The Guildhall Library, *London.*
- LONDON : The Library of King's College, *London.*
- LONDON : The London Library, St. James's Square, *London.*
- LONDON : The Library of the Oxford and Cambridge Club, *London.*
- LONDON : The Library of the Reform Club, *London.*
- LONDON : The Library of the Royal Anthropological Institute, *London.*
- LONDON : The Library of the Royal Geographical Society, *London.*
- LONDON : The Library of the Royal Institution, *London.*
- LONDON : The Library of the Royal Institute of British Architects, *London.*
- LONDON : The Library of Sion College, *London.*
- LONDON : The Library of the Victoria and Albert Museum, *London.*
- LONDON : Westfield College, Hampstead, *London, N.W.³*
- LONDON : The Library of the City of Westminster, *London, S.W.¹*
- LONDON : The Library of Westminster School, *London.*
- LONDON : Dr. Williams's Library, 14 Gordon Square, *London, W.C*
- MANCHESTER : The Library of the Grammar School, *Manchester.*
- MANCHESTER : The John Rylands Library, *Manchester.*
- MANCHESTER : The Library of the Victoria University, *Manchester.*
- NEWCASTLE-UPON-TYNE : The Library of Armstrong College, *Newcastle-upon-Tyne.*
- NEWCASTLE-UPON-TYNE : The Literary and Philosophical Society, *Newcastle-upon-Tyne.*
- NEWCASTLE-UPON-TYNE : The Public Library, *Newcastle-upon-Tyne.*
- NOTTINGHAM : The Library of University College, *Nottingham.*
- OUNDLÉ : The Library of Oundle School, *Oundle.*
- OXFORD : The Library of All Souls College, *Oxford.*
- OXFORD : The Library of the Ashmolean Museum, *Oxford.*
- OXFORD : The Library of Balliol College, *Oxford.*
- OXFORD : The Library of Brasenose College, *Oxford.*
- OXFORD : The Library of Christ Church, *Oxford.*
- OXFORD : The Senior Library, Corpus Christi College, *Oxford.*
- OXFORD : The Library of Exeter College, *Oxford.*
- OXFORD : The Library of Hertford College, *Oxford.*
- OXFORD : The Library of Jesus College, *Oxford.*
- OXFORD : The Library of Keble College, *Oxford.*
- OXFORD : The Library of Magdalen College, *Oxford.*
- OXFORD : Magdalen College, Classical Library.
- OXFORD : The Library of Manchester College, *Oxford*
- OXFORD : The Library of Merton College, *Oxford.*
- OXFORD : The Library of New College, *Oxford.*
- OXFORD : The Library of Oriel College, *Oxford.*
- OXFORD : The Library of Queen's College, *Oxford.*
- OXFORD : The Library of Somerville College, *Oxford.*
- OXFORD : The Library of St. John's College, *Oxford.*
- OXFORD : The Library of Trinity College, *Oxford.*
- OXFORD : The Library of University College, *Oxford.*
- OXFORD : The Library of the Union Society, *Oxford.*
- PLYMOUTH : The Free Public Library, *Plymouth.*
- READING : The Library of the University, *Reading*
- RUGBY : The Arnold Library, Rugby School, *Rugby.*
- ST. ANDREWS : The Library of the University, *St. Andrews.*
- SHEFFIELD : The Free Public Library, *Sheffield.*
- SHEFFIELD : The Library of the University, *Sheffield.*
- SOUTHAMPTON : Ordnance Survey, *Southampton.*

SOUTHAMPTON : University College Library, *Southampton*.
 SOUTHEND-ON-SEA : The Central Public Library, *Southend-on-Sea*.
 STREATHAM HILL : The Library of the Streatham Hill High School, *Streatham Hill*.
 SWANSEA : The Library of University College, *Swansea*.
 UPPINGHAM : The Library of Uppingham School, *Uppingham*.
 WAKEFIELD : The Girls' High School, *Wakefield*.
 WARRINGTON : The Director of the Corporation Museum, *Warrington*.
 WINCHESTER : The Moberly Library, Winchester College, *Winchester*.
 YORK : The Yorkshire Philosophical Society, The Museum, *York*.

THE BRITISH EMPIRE

ADELAIDE, S. AUSTRALIA : The Library of the University, *Adelaide*.
 BRISBANE, QUEENSLAND : The Library of the University of Queensland, *Brisbane*.
 CAPE TOWN, S. AFRICA : The South African Public Library, *Cape Town*.
 CHRISTCHURCH, NEW ZEALAND : The Library of Canterbury College, *Christchurch*.
 COLOMBO : University College, *Colombo, Ceylon*.
 DUNEDIN, NEW ZEALAND : The Library of Otago University, *Dunedin*.
 GRAHAMSTOWN, S. AFRICA : The Library of Rhodes University College, *Grahamstown*.
 HOBART, TASMANIA : The University of Tasmania.
 JOHANNESBURG, S. AFRICA : The Public Library, *Johannesburg*.
 JOHANNESBURG, S. AFRICA : The University of Witwatersrand, *Johannesburg*.
 KINGSTON, ONTARIO : The Library of Queen's University, *Kingston*.
 LONDON, ONTARIO : The Western University Library, *London*.
 MELBOURNE, AUSTRALIA : The Public Library, *Melbourne*.
 MELBOURNE, AUSTRALIA : The Library of the University, *Melbourne*.
 MONTREAL, CANADA : The Library of the McGill University, 3459 McTavish Street,
Montreal.
 POINT GREY, BRITISH COLUMBIA : The University Library, *Point Grey*.
 PRETORIA, S. AFRICA : The Library of the University, *Pretoria*.
 SASKATOON, CANADA : The University of Saskatchewan, *Saskatoon, Sask.*
 STELLENBOSCH, S. AFRICA : The University of Stellenbosch, *Stellenbosch*.
 SYDNEY, NEW SOUTH WALES : The Public Library, *Sydney*.
 SYDNEY, NEW SOUTH WALES : The University Library, *Sydney*.
 TORONTO, CANADA : The University Library, *Toronto*.
 WELLINGTON, NEW ZEALAND : Victoria University College Library, *Wellington*.

THE UNITED STATES OF AMERICA

AMHERST, MASS : The Library of Amherst College, *Amherst*.
 ANDOVER, MASS : The Library of Phillips Academy, Brechin Hall, *Andover*.
 ANN ARBOR, MICHIGAN : The Library of Michigan University, *Ann Arbor*.
 ATHENS : Carnegie Library, Ohio University, *Athens*.
 ATHENS, GA. : The University of Georgia, *Athens*.
 AURORA, NEW YORK : The Library of Wells College, *Aurora*.
 AUSTIN, TEXAS : The Library of Texas University, *Austin*.
 BALTIMORE, MARYLAND : The Library of Johns Hopkins University, *Baltimore*.
 BALTIMORE, MARYLAND : Institute of History of Medicine, 1900 F. Monument Street,
Baltimore.
 BERKELEY, CALIFORNIA : The Library of the University of California, *Berkeley*.
 BETHLEHEM : Lehigh University Library, *Bethlehem, Pa.*
 BLOOMINGTON, IND. : Indiana University Library, *Bloomington*.
 BOSTON, MASS : The Library of the Athenaeum, *Boston*.
 BOSTON, MASS : The Library of the Museum of Fine Arts, *Boston*.
 BOSTON, Mass. : The Public Library, *Boston*.

- BOULDER, COLO. : The Library of Colorado University, *Boulder*.
- BROOKLYN, NEW YORK : The Museum, Brooklyn Institute of Arts and Sciences, *Brooklyn*.
- BRUNSWICK, MAINE : The Library of Bowdoin College, *Brunswick*.
- BRYN MAWR, PA. : The Library of Bryn Mawr College, *Bryn Mawr*.
- CAMBRIDGE, MASS. : The Library of Harvard University, *Cambridge*.
- CARLISLE, PENN. : The Library of Dickinson College, *Carlisle*.
- CHAPEL HILL, N. CAROLINA : The Library of the University of N. Carolina, *Chapel Hill*.
- CHARLOTTESVILLE, VA : The Library of the University of Virginia, *Charlottesville*.
- CHICAGO, ILL. : The Newberry Library, *Chicago*.
- CHICAGO, ILL. : The Library of the University, *Chicago*.
- CINCINNATI, OHIO : The Library of the University, *Cincinnati*.
- CLEVELAND, OHIO : The Library of Adelbert College, *Cleveland*
- CLEVELAND, OHIO : The Public Library, *Cleveland*.
- CLINTON, NEW YORK : The Library of Hamilton College, *Clinton*.
- COLUMBIA, MO. : The Library of Missouri University, *Columbia*.
- COLUMBUS, OHIO : The State University, *Ohio*.
- DURHAM, N.C. : The Library of Duke University, *Durham*.
- DURHAM, N.C. : Woman's College Library, Duke University, *Durham*.
- EARLHAM, IND. : Earlham College Library, *Earlham*.
- EASTON, PA : The Library of Lafayette College, *Easton*.
- EUGENE, OREGON : University of Oregon Library, *U.S.A.*
- EVANSTON, ILL. : The Library of the North Western University, *Evanston*.
- GRINNELL, IOWA : The Library of Grinnell College, *Iowa*.
- HANOVER : Dartmouth College Library, *Hanover, New Hants*.
- HAVERTFORD : Haverford College Library, *Haverford, Pennsylvania*.
- INDIANAPOLIS, IND. : Butler College Library, *Indianapolis*.
- IOWA CITY : The Library of the State University, *Iowa*.
- ITHACA, NEW YORK : The Library of Cornell University, *Ithaca*.
- KNOXVILLE, TENN. : University of Tennessee, *Knoxville*.
- LAWRENCE, KANSAS : The Library of Kansas University, *Lawrence*.
- LINCOLN, NEBRASKA : The Library of Nebraska University, *Lincoln*.
- LOS ANGELES, CALIFORNIA : The Library of California University, *Los Angeles*.
- MADISON, N.J. : The Library of Drew University, *Madison*.
- MADISON, WISCONSIN : The Library of the University of Wisconsin, *Madison*.
- MIDDLETOWN, CONN. : The Library of the Wesleyan University, *Middletown*.
- MILFORD, OHIO : Milford Novitiate Library, *Milford*.
- MINNEAPOLIS, MINN. : The Library of the University of Minnesota, *Minneapolis*.
- MISSOULA, MONT. : The Library of the University of Montana, *Missoula*.
- MUNCIE, IND. : Ball State Teachers' College Library, *Muncie, Ind.*
- NEW HAVEN, CONN. : The Library of Yale University, *New Haven*.
- NEW LONDON HALL : Connecticut College, *New London, Conn.*
- NEW YORK : The American Geographical Society, 156th Street, Broadway, *New York*.
- NEW YORK : The College of the City of New York, Convent Avenue, *New York*.
- NEW YORK : Hunter College, 68th Street, *New York*.
- NEW YORK : The Library of Columbia University, *New York*.
- NEW YORK : The Metropolitan Museum of Art, *New York*.
- NEW YORK : The Public Library, *New York*.
- NEW YORK : The University Library, University Heights, *New York City, N.Y.*
- NORMAN, OKLAHOMA : The Library of Oklahoma University, *Norman*.
- NORTHAMPTON, MASS. : The Library of Smith College, *Northampton*.
- NORTON, MASS. : Wheaton College Library, *Norton, Mass.*
- OBERLIN : Oberlin College, *Oberlin*.
- PHILADELPHIA, PA. : The Free Library, *Philadelphia*.
- PHILADELPHIA, PA. : The Library of the University of Pennsylvania, *Philadelphia*.
- PHILADELPHIA, PA. : The Library of the University Museum, *Philadelphia*.

- PITTSBURG, PA. : Pennsylvania College for Women, *Pittsburg*.
 PITTSBURG, PA. : The Carnegie Library, *Pittsburg*.
 POUGHKEEPSIE, NEW YORK : The Library of Vassar College, *Poughkeepsie*.
 PRINCETON, NEW JERSEY : The University Library, *Princeton*.
 PROVIDENCE, RHODE ISLAND : The Library of Brown University, *Providence*.
 ROCHESTER, N.Y. : The Library of Rochester University, *Rochester*.
 ST. LOUIS, MISSOURI : The Library of Washington University, *St. Louis*.
 SAN ANTONIO, TEX. : Incarnate Word College Library, Broadway, *San Antonio*.
 SCHENECTADY, NEW YORK : Union College Library, *Schenectady*.
 SEATTLE : University of Washington Library, *Seattle, Washington*.
 SOUTH HADLEY, MASS. : The Library of Mount Holyoke College, *South Hadley*.
 STANFORD, CALIFORNIA : The Library of the University, *Stanford*.
 SWARTHMORE, PA. : The Library of Swarthmore College, *Swarthmore*.
 TERRE HAUTE, IND. : The Library of Indiana State Normal School, *Terre Haute*.
 URBANA, ILL. : The Library of the University of Illinois, *Urbana*.
 WASHINGTON : The Library of the Catholic University of America, *Washington, D.C.*
 WASHINGTON : The Library of Congress, *Washington*.
 WELLESLEY, MASS. : The Library of Wellesley College, *Wellesley*.
 WORCESTER, MASS. : Holy Cross College, *Worcester, Mass.*

AUSTRIA

- GRAZ : Archäologisch-epigraphisches Seminar der Universität *Graz*.
 VIENNA : Archäologisch-epigraphisches Seminar der Universität *Wien*.
 VIENNA : Oesterreichisches archäologisches Institut in *Wien*.
 VIENNA : Nationalbibliothek, *Wien*.
 VIENNA : Universitätsbibliothek, *Wien*.

BELGIUM

- BRUSSELS : Bibliothèque royale de Belgique, Rue du Musée, *Brussels*.
 BRUSSELS : Musées Royaux d'Art et d'Histoire, Parc du Cinquantenaire, 10, *Brussels*.
 BRUSSELS : La Société des Bollandistes, *Brussels*.
 GHENT : L'Université de Gand, 2 Fossé d'Othon, *Ghent*.
 LIÈGE : The Faculty of Philosophy and Letters at the University, *Liège*.

BULGARIA

- SOFIA : L'Institut archéologique Bulgare, Rakowska 127, *Sofia*.

CHINA

- PEPING : Metropolitan Library, *Peping*.

CZECHOSLOVAKIA

- PRAGUE : The Public University Library, *Prague*.

DENMARK

- COPENHAGEN : Kongelige Bibliothek, *Copenhagen*.
 COPENHAGEN : Ny Carlsberg Glyptotek, *Copenhagen*.

EGYPT

- ALEXANDRIA : Le Musée Gréco-Romain, *Alexandria*.
 CAIRO : La Bibliothèque de l'Université égyptienne, Orman Gardens, *Giza B.*

ESTONIA

- TARTU (DORPAT) : Institute of Classical Archaeology, The University, *Tartu*.

FRANCE

- ALGIERS, N. AFRICA : La Bibliothèque de l'Université, *Alger*.
 GRENOBLE : La Bibliothèque de l'Université, *Grenoble, Isère*.
 LILLE : La Bibliothèque de l'Université de Lille.
 PARIS : La Bibliothèque de l'Université à la Sorbonne, *Paris*.
 PARIS : La Bibliothèque de l'École Normale Supérieure, *Paris*.
 PARIS : La Bibliothèque Nationale, *Paris*.
 PARIS : La Bibliothèque de l'Institut de France, *Paris*.
 PARIS : La Bibliothèque d'Art et d'Archéologie, *Paris*.
 STRASBOURG : Bibliothèque nationale et universitaire, *Strasbourg*.

GERMANY:

- BERLIN : Archäologisches Seminar der Universität *Berlin*.
 BERLIN : Universitätsbibliothek, *Berlin*.
 BERLIN : Preussische Staatsbibliothek, *Berlin*.
 Breslau : Universitätsbibliothek, *Breslau*.
 FREIBURG-I.-BREISGAU : Universitätsbibliothek, *Freiburg-i -Breisgau*.
 GIESSEN : Universitätsbibliothek, *Giessen*.
 GÖTTINGEN : Universitätsbibliothek, *Göttingen*.
 GREIFSWALD : Universitätsbibliothek, *Greifswald*.
 HEIDELBERG : Universitätsbibliothek, *Heidelberg*.
 JENA : Universitätsbibliothek, *Jena*.
 KIEL : Universitätsbibliothek, *Kiel*.
 KOELN-BAYENTHAL : Archäologisches Institut der Universität *Koeln-Bayenthal*.
 KÖNIGSBERG : Universitätsbibliothek, *Königsberg*.
 LEIPZIG : Archäologisches Institut der Universität *Leipzig*.
 LEIPZIG : Universitätsbibliothek, *Leipzig*.
 MARBURG : Universitätsbibliothek, *Marburg*.
 MUNICH : Bayrische Staatsbibliothek, *München*.
 ROSTOCK : Universitätsbibliothek, *Rostock*.
 TRIER : Provinzialmuseum, *Trier*.
 TÜBINGEN : Archäologisches Institut der Universität, *Tübingen*.
 WÜRZBURG : Martin von Wagner Museum, *Würzburg*.
 WÜRZBURG : Universitätsbibliothek, *Würzburg*.

GREECE

- ATHENS : American School of Classical Studies, *Athens*.
 ATHENS : Deutsches archaeologisches Institut, Phidias-str. 1, *Athens*.
 ATHENS : L'École française d'Athènes, *Athens*.

HOLLAND

- THE HAGUE : Koninklijke Bibliotheek, *The Hague*.
 LEEUWARDEN : Buma Bibliotheek, *Leeuwarden*.
 LEIDEN : Bibliotheek der Rijks-Universiteit, *Leiden*.
 NYMEGEN : Rijks-Museum G. M. Kam, *Nymegen*.
 UTRECHT : Bibliotheek der Universiteit, *Utrecht*.

HUNGARY

BUDAPEST : The Museum in Aquincum, *Budapest*.

ITALY

CAGLIARI (SARDEGNA) : Biblioteca della Facoltà di Lettere e Filosofia, R. Università, *Cagliari*.

CITTÀ DEL VATICANO : Biblioteca Apostolica Vaticana, *Città del Vaticano*.

FLORENCE : R. Biblioteca Nazionale Centrale, *Florence*

MILAN : Biblioteca del' Università Cattolica del S. C., *Milan*.

MILAN : Civici Istituti di Storia e d'Arte, Castello Sforzesco, *Milano*.

NOVARA : R. Liceo-Ginnasio ' Carlo-Alberto,' *Novara*.

PADUA : Gabinetto d'Archeologia della R. Università, *Padua*

PAVIA : Biblioteca della Facoltà di Filosofia e Lettere, R. Università, *Pavia*

ROME : The American Academy in Rome, Porta S Pancrazio, *Rome*.

ROME : Biblioteca del Reale Istituto e Storia dell 'Arte, *Rome*.

ROME : Deutsches archäologisches Institut, Via Sardegna, 79, *Roma* (25).

ROME : La Biblioteca Nazionale Vittorio Emanuele, *Rome*.

ROME : Ufficio Scavi di Ostia, *Rome*.

TURIN : La Biblioteca Nazionale, *Turin*.

JAPAN

TOKYO : The Imperial University Library, *Tokyo*.

NORWAY

OSLO : Universitetsbibliotek, *Oslo*.

PALESTINE

JERUSALEM : The British School of Archaeology, *Jerusalem*.

JERUSALEM : The Palestine Museum Library, *Jerusalem*.

POLAND

CRACOW : Archaeological Institute, 12 St. Anne Street, *Cracow*.

WARSAW : University Library, *Warsaw*.

WILNO : University Library, *Wilno*.

SWEDEN

GOTHENBURG : Stadbiblioteket, *Göteborg*.

LUND : The Library of the University, *Lund*.

STOCKHOLM : The Royal Library, *Stockholm*.

UPPSALA : The Library of the University, *Uppsala*

SWITZERLAND

GENEVA : Bibliothèque publique et universitaire, *Geneva*.

LAUSANNE : M. Charles Favez, L'Association de Lectures philologiques, 39 Bvd. de Grancy, *Lausanne*.

ZÜRICH : Zentralbibliothek, *Zürich*.

TURKEY

ISTANBUL : Archaeologisches Institut des Deutschen Reiches, *Istanbul*.

EXCHANGES OF PUBLICATIONS

The following is a list of Societies, Institutions, etc, with which exchanges of publications have been arranged:

FRANCE

PARIS: L'Association Guillaume Budé, 95, Boulevard Raspail, *Paris*.

GREAT BRITAIN

CARLISLE: Cumberland and Westmorland Antiquarian and Archaeological Society, Tullie House, *Carlisle*.

DEVIZES: The Wiltshire Archaeological and Natural History Society, The Museum, *Devizes*.

EDINBURGH: The Society of Antiquaries of Scotland, Queen Street, *Edinburgh*.

HOLYWELL: The Cambrian Archaeological Association, Whitford, *Holywell*.

LEEDS: The Yorkshire Archaeological Society, 10 Park Place, *Leeds*.

LEWES: The Sussex Archaeological Society, *Lewes*.

LONDON: The Society of Antiquaries, Burlington House, Piccadilly, *London*.

NEWCASTLE-UPON-TYNE: The Society of Antiquaries, *Newcastle-upon-Tyne*.

GERMANY

BERLIN: Zeitschrift für Ethnologie.

BERLIN: Bayerische numismatische Gesellschaft, Karlstrasse 10, *München*.

BONN: Provinzialmuseum, *Bonn*.

BONN: Verein von Altertumsfreunden im Rheinlande, *Bonn*.

FRANKFURT A. M.: Deutsches Archäologisches Institut, Palmgartenstrasse 12, *Frankfurt am M.*

MAINZ: Römisch-germanisches Zentral-Museum, *Mainz*.

MUNICH: Archäologisches Seminar der Universität, *München*.

HUNGARY

BUDAPEST: Magyar Nemzeti Museum.

ITALY

MILAN: *Historia*, Via Moscova, 17, *Milan*.

PAVIA: Athenaeum, R. Università di *Pavia*.

ROME: Accademia di Romania, Via Emilio di Cavaliere, *Rome* (36).

ROME: The Library of the British School, Valle Giulia, *Rome*.

ROME: L'École française de Rome.

ROME: Pontificio Istituto Biblico, Piazza della Pilotta 35, *Rome*.

ROMA: Rivista di Archeologia Cristiana, Via Napoleone III¹, *Rome*.

ROMA: Rivista di Archeologia e Storia dell'Arte, Palazzo Venezia, 3, *Rome*.

TURIN: Rivista di Filologia e d'Istruzione Classica (Casa Editrice Giovanni Chiantore, Via Vittorio Amedeo ii, 18, *Turin*.³)

ROUMANIA

BUCHAREST: The Academia Română.

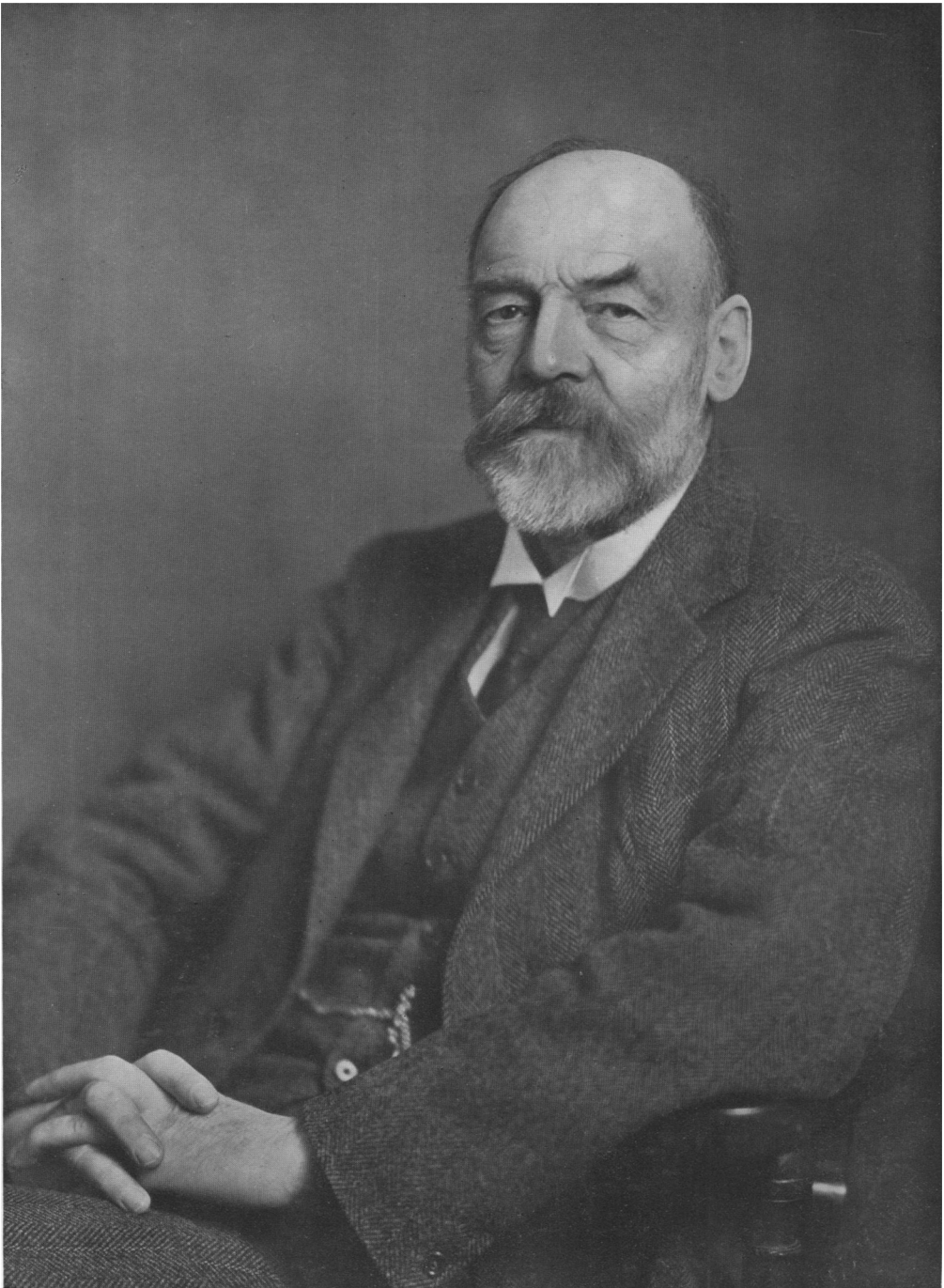
SPAIN

BARCELONA: Institut d'Estudis Catalans, Palau de la Diputació, *Barcelona*.

SYRIA

BEYROUTH: M. le Directeur, Service des Antiquités, Haut-Commissariat de la République Française, *Beyrouth*.

Hunt, Barnard & Co., Ltd., London and Aylesbury.



W. & E. Drummond Young, Photographers, Edinburgh

J. R.S. vol. xxii (1932)

Geo: Macdonald
1932

THE JOURNAL OF ROMAN STUDIES

VOLUME XXII

PART I

Papers presented to
SIR GEORGE MACDONALD

K.C.B., LL.D., D.LITT., F.B.A.

Edited for the Committee by
R. G. COLLINGWOOD
✧
M. V. TAYLOR

PUBLISHED BY THE SOCIETY FOR THE PROMOTION
OF ROMAN STUDIES AT THE OFFICE OF
THE SOCIETY, 50 BEDFORD
SQUARE, W. C. 1
LONDON
1932

GEORGIO MACDONALD
ILLUSTRISSIMI ORDINIS BALNEI EQUITI COMMENDATORI
DOCTORI UTRIVSQUE IURIS DOCTORI LITTERARUM
ACADEMIAE BRITANNICAE SOCIO
MONUMENTORUM ROMANORUM IN BRITANNIA ERUTORUM
INDAGATORI IMPIGERRIMO
RERUM ROMANARUM CETEROQUI AUCTORI GRAVISSIMO
HUIUS LIBRI DEDICATIONE
NATALEM SEPTUAGESIMUM GRATULANTUR
CUM SCRIPTORES TUM SOCIETAS STUDIIS ROMANIS
PROMOVENDIS INSTITUTA

CONTENTS

DEDICATION

CONTENTS

LIST OF PLATES

LIST OF ILLUSTRATIONS IN THE TEXT

PREFATORY NOTE	1
A BIBLIOGRAPHY OF SIR GEORGE MACDONALD'S PUBLISHED WRITINGS								3
ANDREAS ALFÖLDI, The Helmet of Constantine with the Christian Monogram										9
J. G. C. ANDERSON, The Genesis of Diocletian's Provincial Re-organization										24
DONALD ATKINSON, Three Caistor Pottery Kilns					33
G. BALDWIN BROWN, Roman Engineering Works and their Aesthetic Character										47
ERIC BIRLEY, Roman Garrisons in the North of Britain							55
J. P. BUSHE-FOX, Some Notes on Coast Defences						60
JAMES CURLE, Roman Drift in Caledonia					73
ERNST FABRICIUS, Some Notes on Polybius's Description of Roman Camps	...									78
H. MATTINGLY, Hoards of Roman Coins found in Britain							88
I. A. RICHMOND, The Irish Analogies for the Romano-British Barn-dwelling...										96
M. I. ROSTOVITZ, The Caravan-gods of Palmyra						107
R. E. M. WHEELER, Notes on Building-construction in Roman Britain	...									117

LIST OF PLATES

Plate I (Frontispiece): Portrait of Sir George Macdonald, K.C.B.

The Helmet of Constantine with the Christian Monogram :

Plates II, III, IV. *Solidi* struck at Ticinum, A.D. 315-317.

Three Caistor Pottery Kilns :

Plate V. 1. Kiln I, looking south, showing fire-hole opening and stoke-hole.
2. Kiln I, looking east, showing tongue-column and vessels inserted to support oven-floor.

Plate VI. 1. Kiln II, showing oval slots in oven floor ; a broken jar-base is set in the surface of the floor.
2. Kiln III, showing west side broken away, tongue-column and oven-floor with circular holes.
3. Kilns II and III, showing common stoke-hole and fire-hole of Kiln II.

Plate VII. Coarse jars of Groups A and B.

Plate VIII. Coarse jars of Groups B and C.

Plate IX. Coarse jars of Groups D, E, F, and G.

Plate X. Coarse jars of Groups G and H.

Plate XI. Jars, jugs and bowls of Groups K, L, and M.

Plate XII. Vessel of coarse dark-grey ware (Group Q, 3).

Roman Engineering Works and their Aesthetic Character :

Plate XIII. The Pont du Gard : Perspective view from the right bank.

Some Notes on Roman Coast Defences :

Plate XIV. Pevensey : view and plan of timber-framing grooves in foundation of South Wall.

Plate XV. Pevensey : view of beam-hole and chalk-and-flint packing, and plan and section of timber framing, under the bastion west of the fallen North Wall.

Plate XVI. Richborough : remains of turret on the West Wall showing four beam-holes.

Plate XVII. 1. Richborough : remains of turret between the N.W. angle of the Wall and N. Postern Gate, showing three beam-holes.
2. Burgh Castle : underside of fallen bastion on the South Wall, showing impression of timber-framing.

Plate XVIII. Richborough : elevation and section of the turret between N.W. angle of Wall and Postern Gate, with plan at beam-hole level and conjectural reconstruction of the timber-framing.

Plate XIX. Old Burrow, North Devon : plan of earthwork based on Mr. St. George Gray's survey (*Devon Assoc. Trans.* xlv, p. 703).

Roman Drift in Caledonia :

Plate XX. West Lothian, Scotland : bronze patera decorated with champlevé enamel.

Plate XXI. Brooches found on native sites in Scotland.

The Irish Analogies for the Romano-British Barn-dwelling :

Plate XXII. Durrow Cross, King's County, with gable-top modelled in the form of a house.

Plate XXIII. 1. Lower Lough Erne : shrine of yew and bronze found 1891, now in the National Museum, Dublin.
2. The Temple at Jerusalem, from the 'Book of Kells' (Trinity Coll., Dublin), fol. 202^v, drawn as an elaborate house.

Plate XXIV. Kilmalkedar Church, Co. Kerry.

The Caravan Gods of Palmyra :

Plate XXV. Relief, representing Palmyrene gods, in the Damascus Museum.

Plates XXVI-XXVIII. Palmyrene *tesserae*.

Notes on Building Construction in Roman Britain :

- Plate xxix. Verulamium : 1. Partition wall, originally timbered with plastered sides, re-inforced by roof-tiles, in a second-century house.
 2. Matrix of circular wall-post in a second-century building.
- Plate xxx. Hadrian's Wall : 1. Horizontal courses of masonry retained on a slope at Highshield Crag.
 2. Courses conforming with a slope of 1 in $3\frac{1}{2}$ at Poltross Burn.
- Plate xxxi. Neumagen : Town Wall showing the broken tombstone of C. Albinus Asper and his wife Secundia Restituta (now in the Provinzialmuseum, Trier) re-used in the foundations.
- Plate xxxii. 1. Richborough : interior of North Wall, late third century, showing the use of chequered masonry by one gang of builders and plain masonry by another.
 2. Verulamium : relieving arch, c. A.D. 300.

LIST OF ILLUSTRATIONS IN THE TEXT

	PAGE
Three Caistor Pottery Kilns :	
Fig. 1. Plan of a third-century house built on the site of pottery-kilns ..	33
Fig. 2. Kiln I : plan and section	35
Fig. 3. Kiln II : plan and section	37
Fig. 4. Kiln III : plan and section	38
Fig. 5. Vessels of Groups N, O, P, and Q	44
Fig. 6. Fragment of jar of rough grey clay (Group Q, 4)	46
Roman Engineering Works and their Aesthetic Character :	
Fig. 7. The Pont du Gard, looking down stream : View taken from the right bank	51
Some Notes on Roman Coast Defences :	
Fig. 8. Pevensey : section of foundation and plan of timber-framing under North Wall between second and third bastions from the East Gate	61
Fig. 9. Pevensey : plan of timber-framing under the bastion east of the fallen North Wall	62
Fig. 10. Burgh Castle, Suffolk : vertical beam-holes in South Wall ..	64
Fig. 11. Burgh Castle, Suffolk : view of vertical beam-holes in South Wall ..	65
Some Notes on Polybius's Description of Roman Camps :	
Fig. 12. Diagrammatic plan to illustrate Polybius's description of a camp for an unusually strong force	79
Some Irish Analogies for the Romano-British Barn-dwelling :	
Fig. 13. Iniscaltra Church, co. Galway : roof finial in stone, imitative of a wooden archetype	98
Fig. 14. Sketch-plan of a house of an <i>aire-tuisi</i>	103
Fig. 15. Scandinavian <i>stue</i> : A, Källberga, Alunda ; B, Augerum Blekinge ; C, Hustomtning 1, Brostorp ; D, Jæn	105
Notes on Building Construction in Roman Britain :	
Fig. 16. Verulamium : section of partition-wall in Building iv, 2,	118
Fig. 17. Colchester : Early Roman Barrack-building excavated 1931	119
Fig. 18. Elevation and plan of Roman wall, found in Friday and Knight-rider Streets, London, in 1905 (<i>Archaeologia</i> lx)	122
Fig. 19. Box-voussoirs from London (London and Guildhall Museums)	128
Fig. 20. Reconstruction of vault in the Bath-building at Chesters	130