

Research Article

Cite this article: Cuevas HE, Prom LK (2024). Association analysis of grain mould resistance in a core collection of NPGS Ethiopian sorghum germplasm. *Plant Genetic Resources: Characterization and Utilization* **22**, 201–210. <https://doi.org/10.1017/S1479262124000157>

Received: 8 November 2023

Revised: 20 February 2024

Accepted: 21 February 2024

First published online: 22 May 2024

Keywords:

core collection; genome-wide association analysis; resistant genes; tropical germplasm

Corresponding author:

Hugo E. Cuevas;

Email: hugo.cuevas@usda.gov

Association analysis of grain mould resistance in a core collection of NPGS Ethiopian sorghum germplasm

Hugo E. Cuevas¹  and Louis K. Prom²

¹USDA-ARS, Tropical Agriculture Research Station, 2200 Pedro Albizu Campos Avenue, Mayagüez, 00680, Puerto Rico and ²USDA-ARS, Southern Plains Agriculture Research Center, 2881 F & B Road, College Station, TX 77845, USA

Abstract

The Ethiopian core collection of the USDA-Agriculture Research Service, National Plant Germplasm System (NPGS) includes 376 accessions and a genomic characterization that revealed 151,210 single nucleotide polymorphisms. This collection, however, lacks phenotypic characterization for several important agriculture traits. A total of 330 accessions from this NPGS Ethiopian core set were evaluated for grain mould resistance response across four tropical environments. Most of the accessions in the NPGS Ethiopian collection showed susceptibility to grain mould based on the low emergence rate and high seed deterioration observed in the seeds. The population structure of the collection was not related to grain mould resistance response suggesting this germplasm originated in regions with low disease pressure. The analysis identified two accessions with high emergence (PI 457867 and PI 454221) and three (PI 455036, PI 455213 and PI 330821) with low seed degradation. Genome-wide association analysis found genomic regions in chromosome 1, 3 and 8 associated with the observed grain mould resistance variation. Candidate gene analysis within these three loci identified diseases resistance genes involved in pathogen recognition and signalling cascades of the plant immunity system. These five NPGS Ethiopian accessions are candidates for use in a pre-breeding germplasm programme to develop improved germplasm with grain mould resistance.

Introduction

Sorghum [*Sorghum bicolor* (L.) Moench] is a drought-tolerant crop used for human and animal consumption (Srinivasa Rao *et al.*, 2014). It is an important dietary staple cereal cultivated in the dry regions of multiple countries. Today, the crop is the fifth most important cereal worldwide behind maize (*Zay mays* L.), wheat (*Triticum aestivum* L.), rice (*Oryza sativa* L.) and barley (*Hordeum vulgare* L.) (FAOSTAT, 2022). Sorghum was domesticated in Northeast Africa, an area that extends from the arid regions of Ethiopia to Sudan (Mann *et al.*, 1983), although its expansion to the West and South regions of Africa lead to multiple re-domestication events. This genetically diverse crop is classified into five major races (Kafir, Durra, Bicolor, Caudatum and Guinea) based on their inflorescence architecture and kernel morphology (Snowden, 1936). These races have been associated with specific environmental adaptations and enclose substantial phenotypic and genetic variation (Cuevas *et al.*, 2017; Olatoye *et al.*, 2018; Faye *et al.*, 2019; Cuevas and Prom, 2020). The compact panicle shape of the Durra race was domesticated in the Ethiopia surrounding regions and it is associated with drought tolerance (Mutava *et al.*, 2011; Fracasso *et al.*, 2016). In contrast, the Guinea race was domesticated in the humid regions of West Africa, where an open panicle shape that provided a better air flow was selected to reduce the incidence of grain mould (Cuevas *et al.*, 2018). However, phenotypic and genotypic diversity studies in Ethiopian germplasm found high frequency of admixture accessions and the presence of a large number of rare alleles that shows its large diversity (Cuevas *et al.*, 2017; Girma *et al.*, 2019, 2020; Nida *et al.*, 2019).

Crop improvement requires effective use of genetic diversity and the identification of the most valuable germplasm in an *ex-situ* collection (Byrne *et al.*, 2018). The National Plant Germplasm System (NPGS), belonging to USDA – Agriculture Research Service, maintains a sorghum germplasm collection that includes >41,000 accessions from 114 countries. This germplasm collection is a publicly global genetic resource for sorghum breeding programmes. The large size of this germplasm collection and the fact that tropical accessions flower during short-day length (<12 h; photoperiod sensitive) limits its effective screening for many economically important traits. Today, phenotypic analysis of NPGS sorghum germplasm collection mainly relies on descriptors traits taken during the regeneration process in tropical regions. To encourage the use of this germplasm collection, a core collection of 2438 accessions was established using passport information (Dahlberg *et al.*, 2004), later by



© United State Department of Agriculture, Agricultural Research Service., 2024. This is a work of the US Government and is not subject to copyright protection within the United States. Published by Cambridge University Press on behalf of National Institute of Agricultural Botany. This is an Open Access article, distributed under the terms of the Creative Commons Attribution licence (<http://creativecommons.org/licenses/by/4.0/>), which permits unrestricted re-use, distribution and reproduction, provided the original article is properly cited.

a genomic characterization for core sets from Ethiopia (Cuevas *et al.*, 2017), Sudan (Cuevas and Prom, 2020), Senegal (Faye *et al.*, 2019), Nigeria and Niger (Olatoye *et al.*, 2018). Phenotypic and genetic analysis found the existence of structure populations within each core sets that could be related to adaptation to different agroclimatic regions and human selection. Moreover, these genomic characterizations were suitable for genome-wide association analysis (GWAS) providing a new resource for the study of agronomically important traits. Certainly, the screening of NPGS tropical sorghum germplasm is necessary to identify most valuable accessions that can be used to broaden the genetic diversity of breeding programmes.

The NPGS Ethiopian core set includes 376 accessions and a genomic characterization revealed 148,476 single nucleotide polymorphism (SNPs) (Cuevas *et al.*, 2017). Population structure analysis found that its genetic diversity comprises 11 populations associated with morphologic traits. Likewise, a genomic and population structure analysis of 1425 Ethiopian sorghum landraces maintained at the Ethiopian Biodiversity Institute (EBI) in Ethiopia found this germplasm can also be stratified into 11 populations (Girma *et al.*, 2019). A germplasm collection project across Ethiopia farmers field collected a total of 304 accessions that represent the different production regions (Wondimu *et al.*, 2021). The population structure analysis found six populations with strong correlations with the geographic distribution of the accessions. Nevertheless, these populations showed continuous gene flow that preserves genetic diversity and increases the adaptability of sorghum populations to different agriculture niches. In fact, Ethiopian germplasm with cold (Singh, 1985) and drought tolerance (Adugna and Tirfessa, 2014), resistance to anthracnose [*Colletotrichum sublineola* (formerly *C. graminicola* P. Henn in Kabát and Bubk)] (Cuevas *et al.*, 2019b), grain mould caused by a complex of fungal pathogens (Nida *et al.*, 2019) and nutritional quality (Rhodes *et al.*, 2017) have been reported. The high genetic and phenotypic diversity of Ethiopian germplasm is a valuable resource for sorghum improvement. The association of population structure or genomic regions with important traits is a strategy that could be used to facilitate the screening of these Ethiopian germplasm collection.

Grain mould is one of the most important diseases affecting sorghum production worldwide (Thakur *et al.*, 2006). The disease is manifested by discolouring of the inside and outside of the grain, softening the endosperm, and reducing the acceptability for food and feed processing (Rooney and Serna-Saldivar, 1991). It is caused by a complex of more than 40 pathogenic and opportunistic fungi including *Fusarium thapsinum* (Klittich, Leslie, Nelson, & Manasas.), *Fusarium semitectum* (Berk. & Ravenel), *Curvularia lunata* (Wakk.) Boedijn, *Alternaria alternata* (Fr.) Keissler, and *C. sublineola* which are considered the most important species worldwide (Thakur *et al.*, 2007). Therefore, the evaluation of grain mould resistance is mostly measured based on the correlation of seed emergence, deterioration and weight (Prom, 2004; Erpelding and Prom, 2006). The warm climates of tropical and sub-tropical regions are the most favourable environments for the development of the disease (Ackerman *et al.*, 2021) and resistant cultivars provide the most effective method to control grain mould. At present, some research has identified resistance sources and genomic regions associated with grain mould resistance. The evaluation of the sorghum association panel (SAP) conducted in Puerto Rico and Texas identified resistant accessions and genomic regions associated with seed emergence and deterioration

(Cuevas *et al.*, 2019a; Prom *et al.*, 2020). This multiyear evaluation identified 25 resistant accessions in Puerto Rico and 18 resistant accessions in Texas. Only four accessions ('SUMAC', 'SC623', 'Sureño' and 'Della') were resistant across locations. GWAS found three genomic regions associated with seed emergence and deterioration which enclose one *R* gene and another related to plant immune system (Cuevas *et al.*, 2019a). A subset of 1425 Ethiopian landraces from EBI were evaluated for grain mould resistant in Ethiopia (Nida *et al.*, 2019). The analysis based on seed deterioration found that most of the landraces (>66%) showed a resistant response. GWAS found that the *YELLOW SEED1* (*Y1*) locus associated with kernel colour (Ibraheem *et al.*, 2010; Morris *et al.*, 2013) also decreased seed deterioration caused by mould and unfavourable weather conditions. These studies revealed the complex inheritance of grain mould resistance and how different environments can affect the observed resistance response. In fact, the screening and inheritance studies for resistance to grain mould of sorghum are difficult due to the many pathogens associated with the disease and its low heritability. Additional evaluations and studies of the inheritance of resistance with others sorghum germplasm will provide better insight into the genetic control of grain mould in sorghum.

The identification of grain mould resistant germplasm is required for the development of new resistant cultivars. In this regard, the NPGS sorghum germplasm collection is a major source of genetic diversity and disease resistance genes for breeding programmes. But the lack of passport information in this collection inhibits the selection of germplasm based on geographical regions. In the current study, we evaluated the grain mould resistance response of NPGS Ethiopian core set (Cuevas *et al.*, 2017) to: (1) identify new grain mould resistant germplasm, (2) determine the association of NPGS Ethiopian population structure with grain mould resistance, and (3) associate genomic regions with grain mould resistance through GWAS.

Material and methods

Germplasm and field experiment

A total of 330 accessions from a core set of the NPGS Ethiopian germplasm collections (Cuevas *et al.*, 2017) were evaluated for grain mould resistance (online Supplemental Table S1). The core set and susceptible (RTx430 and RTx2536) and resistant (Sureño and PI 267548 [Prom and Erpelding, 2009]) controls were planted in research farms at the USDA-ARS Tropical Agriculture Research Station in Isabela (18.471569, -67.043472) and Mayaguez (18.211536, -67.135562), Puerto Rico for two consecutive years (November 2014 and October 2015, respectively). At both locations, a completely randomized design with a single replication was used, with plots measuring 1.8 m in length with 0.9 m between rows.

The data from the two locations were used to select seven accessions with an average seed deterioration of ≤ 2.5 (on a 5-point scale) and emergence rate of $\geq 75\%$ for two additional replicated trials at Isabela, Puerto Rico. The trials included the seven selected accessions, the susceptible checks (RTx430, RTx2536 and RTx2911) and the resistant checks from the SAP ('Summac', 'Rox Orange', 'Red Amber', 'Keller', 'Kansas Orange', 'SC309', 'SC609', 'Sureño', 'SC15', 'SC719' and 'SC13'; [Cuevas *et al.*, 2019a]) and the Sudanese tropical accession PI 267548 (Prom and Erpelding, 2009) were planted in 2020 and

2021 in randomized block design consisting of four blocks with plots measuring 1.8 m in length with 0.9 m between rows.

The plots and plants in the four experiments were maintained using standard management practices, weed controlled using mechanical tillage and hand hoeing, and aerial watering was supplied in the absence of rainfall. Temperature and relative humidity were recorded throughout the experiments using an Onset HOBO U23 Pro V2 located within research plots.

Grain mould response

The grain mould response was determined based on visual evaluations of seed mould and weathering degradation (hereafter referred to as seed degradation) and seedling emergence. Three panicles from the core set of the NPGS Ethiopian germplasm collections (i.e., experiment 1 and 2) and five panicles from the subset (i.e., experiment 3 and 4) with uniform flowering times were covered with mesh bags for exposure to environmental conditions and to avoid damage by birds. Panicles were harvested at maturity stage (30–40 days after anthesis), dried, and threshed using a single plant thresher (Almaco Single Plant and Head Thresher; Allan Machine Company). Approximately 400 seeds from each panicle were assessed for seed degradation using a 5-point visual scale (Thakur *et al.*, 2007; Isakeit *et al.*, 2008), where 1 indicates seed is bright with no mould and no discoloration resulting from weathering; 2 indicates seed is not as bright and has little or no mould but has some discoloration (1–10% moulded kernels); 3 indicates seed is not bright, with some mould and some discoloration (11–25% moulded kernels); 4 indicates seed is almost entirely covered in mould, and the pericarp is degraded (26–50% moulded kernels); and 5 indicates seed is covered entirely with mould, and the pericarp is degraded and looks dead (>50% moulded kernels). The emergence rate was determined based on the number of seedlings observed after 10 days from 30 planted seeds from each panicle. The seeds were planted in flats containing Metro Mix 200 potting medium and incubated in a greenhouse at room temperature.

Phenotypic analysis

The seed degradation and emergence rate from the first two years were analysed as a randomized complete block design (RCBD) with two blocks. Likewise, the subset of accessions and reference lines evaluated for four years were analysed as a RCBD with four blocks. The seed degradation and emergence rate of both sets of data were subject to analysis of variance using the *Proc mixed covtest* method *type 3* procedure of SAS (SAS Institute, Cary, NC) where years were treated as fixed effects and accessions as random effects. The repeatability of seed degradation and emergence rate was estimated using the following formula:

$$R^2 = \frac{\sigma_g^2}{\sigma_g^2 + \frac{\sigma_e^2}{e}}$$

where σ_g^2 and σ_e^2 refer to the accessions and error variances, respectively, while e is the number of blocks (Bernardo, 2002). The Pearson correlation coefficients among traits were calculated using the *Proc corr* procedure of SAS. The seed degradation and emergence rate of accessions and reference lines in the subset were compared by using the Tukey–Kramer's post-hoc test at

the 5% level of significance. Likewise, the seed degradation and seedling emergence rate among the eleven population present in the NPGS Ethiopian core set (Cuevas *et al.*, 2017) were compared by using the Tukey–Kramer's post-hoc test at the 5% level of significance.

Association and phylogenetic analysis

GWAS was conducted using the genomic characterization for the NPGS Ethiopia core set available at the National Center for Biotechnology Information (NCBI) Sequence Read Archive (SRA) (SRP159248; [Cuevas *et al.*, 2017]) and the seed degradation and emergence rate of the 333 accessions. The Tassel 5.0 v2 GBS pipeline (Glaubitz *et al.*, 2014) was used to recall SNPs using the most recent version of the BTx623 sorghum genome (version v.3; www.sorghumbase.com). A total of 151, 210 SNPs with minor allele frequencies (MAF) ≥ 0.05 were retained for GWAS. The Bayesian-information and Linkage-disequilibrium Interactively Nested Keyway (BLINK) method was implemented for association analysis using the Genome Association and Prediction Integrated Tool (GAPIT) in R (Lipka *et al.*, 2012). The first three principal components were included as covariates to control population structure and family relatedness. Log quantile-quantile (QQ) P -value plots were visually examined to determine the appropriateness of the linear model. Manhattan and QQ plots were visualized using the R package (Yin, 2022). Associated SNPs were determined using the (Benjamini and Hochberg, 1995) false discovery rate as implemented in GAPIT at the 1% level of significance. The linkage disequilibrium (LD) for associated significance SNPs were delimited using the *block* function of PLINK (Purcell *et al.*, 2007). Later, these LD blocks were used to identify candidate genes based on the annotations of BTx623 v3. sorghum genome reference (www.phytozome.com).

The genotypic data were thinned to 2379 unlinked SNPs ($r^2 < 0.10$) without missing genotypes using PLINK (Purcell *et al.*, 2007) and used in phylogenetic analysis. The maximum-likelihood tree was selected using ModelFinder (Kalyanamoorthy *et al.*, 2017) and branch supports were obtained with the ultrafast bootstrap (Hoang *et al.*, 2018) both as implemented in the IQ-TREE 2 software (Minh *et al.*, 2020). The phylogenetic tree was visualized using Interactive Tree of Life (Letunic and Bork, 2011).

Results

Grain mould resistance in NPGS Ethiopian core set

The seed degradation and seedling emergence rate in the NPGS core set averaged $64.09\% \pm 19.02$ and 3.84 ± 0.62 , respectively, indicating that most of the accessions are highly susceptible to grain mould (online Supplementary Fig. S1 and Table S1). A total of 115 accessions had seedling emergence rates $\geq 75\%$ and 11 accessions showed seed degradation scores ≤ 2.5 . Both traits were negatively correlated ($r^2 = -0.32$; P -value < 0.001) indicating seeds with high seed deterioration rates are likely to have lower emergency rate. Only seven accessions (PI 330821, PI 453177, PI 454221, PI 455036, PI 455213, PI 455248 and PI 457867) exhibited both emergence rate $\geq 75\%$ and seed degradation score ≤ 2.5 . The repeatability of seed degradation and emergency rate was 0.47 for both traits, indicating that environmental factors have large effects on these traits.

The subsequent evaluation of these seven accessions led to the identification of grain mould resistance accessions. Two

Table 1. Mean seedling emergence rates for seven NPGS Ethiopian tropical accessions and fifteen temperate adapted references lines evaluated in Puerto Rico for four years

| Accessions | Origin | <i>n</i> | Emergence rate (%) ^a | | | | | | | |
|---------------|----------|----------|---------------------------------|---|---|---|---|---|---|-----|
| Kansas Orange | Control | 22 | 94.12 ± 06.71 | a | | | | | | |
| Summac | Control | 44 | 92.93 ± 07.09 | a | | | | | | |
| Keller | Control | 22 | 91.53 ± 07.38 | a | b | | | | | |
| PI 267548 | Sudan | 32 | 90.79 ± 12.71 | a | b | c | | | | |
| SC609 | Control | 22 | 87.68 ± 08.17 | a | b | c | | | | |
| Rox Orange | Control | 22 | 84.71 ± 16.70 | a | b | c | | | | |
| SC309 | Control | 22 | 82.00 ± 14.45 | a | b | c | d | | | |
| PI 454221 | Ethiopia | 24 | 75.85 ± 14.95 | a | b | c | d | e | | |
| Red Amber | Control | 22 | 72.73 ± 21.63 | | | b | c | d | e | f |
| PI 457867 | Ethiopia | 24 | 71.39 ± 20.20 | | | c | d | e | f | |
| Sureño | Control | 37 | 71.30 ± 29.56 | | | c | d | e | f | |
| PI 453177 | Ethiopia | 24 | 62.67 ± 19.95 | | | | | d | e | f |
| PI 455036 | Ethiopia | 25 | 62.04 ± 27.32 | | | | | e | f | |
| SC15 | Control | 22 | 59.86 ± 18.87 | | | | | e | f | |
| PI 455248 | Ethiopia | 26 | 59.65 ± 20.57 | | | | | e | f | |
| SC719 | Control | 9 | 58.09 ± 30.53 | | | | | e | f | |
| RTx2536 | Control | 8 | 56.30 ± 18.68 | | | | | e | f | |
| PI 455213 | Ethiopia | 25 | 54.53 ± 23.62 | | | | | | | f g |
| PI 330821 | Ethiopia | 24 | 52.03 ± 26.79 | | | | | | | g h |
| TX2911 | Control | 15 | 51.78 ± 31.62 | | | | | | | g h |
| RTx430 | Control | 30 | 34.80 ± 18.28 | | | | | | | g h |
| SC13 | Control | 22 | 32.53 ± 20.53 | | | | | | | h |

^aDifferent letters indicate significant differences based on Tukey test (minimum significance difference = 20.0; *P*-value < 0.05).

accessions (PI 457867 and PI 454221) showed seedling emergence rates similar to those observed in grain mould resistant control lines ($\geq 71.30\%$; Table 1). Likewise, three accessions (PI 455036, PI 455213, and PI 330821) showed minimal seed degradation similar to the grain mould resistant lines Summac, Rox Orange, Red Amber, Keller, SC13 and SC15 (≤ 1.95 , Table 2). None of the Ethiopian accession exhibited neither high emergence rate nor low seed degradation as observed in Summac, Rox Orange, Red Amber and Keller, indicating that Ethiopian germplasm includes a low frequency of grain mould resistant genes.

The association of high emergence rate and low seed degradation with the population structure of the NPGS Ethiopian germplasm can enable the identification of resistance accessions. Population structure analysis divided this germplasm into eleven populations of which population 5 showed the highest seedling emergence rate (86.95%; Table 3) and the lowest seed degradation (3.33). However, these populations show susceptibility to grain mould indicating Ethiopian population structure is not linked to seed quality. In fact, the five accessions with high emergence rate and low seed degradation ratings identified in the subset belong to population 1 and the admixture group. Phylogenetic analysis between these accessions and references lines revealed that PI 457867 is genetically related to grain mould resistance accessions belonging to the Kafir race (Fig. 1). Moreover, this accession cluster nearby to the grain mould resistant line

Kansas Orange (PI 641824). The other four accessions (PI 330821, PI 454221, PI 455036 and PI 455213) form one cluster distant from references lines being the grain mould resistance accessions from East Africa/India the closer group (Fig. 1).

GWAS and candidate genes

The genome-wide association scan for emergence rate detected two loci on chromosomes 1 (Chr.1: 9,343,797; $-\log[P\text{-value}] = 7.10$) and 8 (Chr.8: 7,329,131; $-\log[P\text{-value}] = 6.75$) (Table 4; Fig. 2). The LD block for the locus in chromosome 1 is located within the putative gene *Sobic.001G120400* which encodes a *Phospholipase A2* protein. The associated SNP in chromosome 8 is in an intergenic region of 19 Kb (*Sobic.08G065400* – *Sobic.08G065600*). However, the associated LD block in this intergenic region has homology to the rice putative gene *Loc_Os0G30220.1* which encodes the *Recognition of Peronospora Parasitica 13-like* (RPPI3-like) protein associated to resistance to downy mildew (*Peronospora parasitica*). The synergistic allelic effect of these two loci is a 13.84% increase in the seed emergence rate. In a genome-wide association scan for seed deterioration was detected a locus in chromosome 3 (Chr.3: 68,822,874; $-\log P$ [value] = 9.97). This LD block for this locus expands 48.41 Kb and encloses seven putative genes (*Sobic.03G372600*, *Sobic.03G372700*, *Sobic.03G372750*, *Sobic.03G372800*, *Sobic.03G372850*, *Sobic.03G372900*, *Sobic.03G372950*). Candidate gene analysis

Table 2. Mean seed deterioration scores for seven NPGS Ethiopian tropical accessions and fifteen temperate adapted references lines evaluated in Puerto Rico for four years.

| Accessions | Origin | n | Means ± Standard deviation ^a | | | | Kernel | | | | | | | |
|---------------|----------|----|---|---|---|---|--------|-------|-------|-------|-------|-----|-----|--------|
| Summac | Control | 44 | 1.18 ± 0.39 | a | | | Brown | | | | | | | |
| Rox Orange | Control | 22 | 1.55 ± 0.51 | a | b | | Brown | | | | | | | |
| Red Amber | Control | 22 | 1.55 ± 0.67 | a | b | | Brown | | | | | | | |
| SC15 | Control | 22 | 1.68 ± 0.48 | a | b | | Brown | | | | | | | |
| PI 455213 | Ethiopia | 25 | 1.76 ± 0.66 | a | b | | Brown | | | | | | | |
| Keller | Control | 22 | 1.77 ± 0.61 | a | b | | Brown | | | | | | | |
| PI 455036 | Ethiopia | 25 | 1.88 ± 0.67 | | b | c | Brown | | | | | | | |
| PI 330821 | Ethiopia | 24 | 1.95 ± 0.39 | | b | c | Brown | | | | | | | |
| SC13 | Control | 22 | 2.05 ± 0.38 | | b | c | d | Brown | | | | | | |
| PI 267548 | Sudan | 32 | 2.22 ± 0.97 | | b | c | d | e | White | | | | | |
| PI 455248 | Ethiopia | 26 | 2.54 ± 0.51 | | | c | d | e | f | Brown | | | | |
| PI 457867 | Ethiopia | 24 | 2.54 ± 0.66 | | | c | d | e | f | Brown | | | | |
| Kansas Orange | Control | 22 | 2.67 ± 0.58 | | | | d | e | f | Brown | | | | |
| SC309 | Control | 22 | 2.82 ± 0.73 | | | | | e | f | Brown | | | | |
| SC609 | Control | 22 | 2.86 ± 0.64 | | | | | | e | f | Brown | | | |
| PI 453177 | Ethiopia | 24 | 2.92 ± 0.93 | | | | | | f | g | Brown | | | |
| PI 454221 | Ethiopia | 24 | 3.13 ± 1.19 | | | | | | f | g | Brown | | | |
| Sureño | Control | 37 | 3.14 ± 0.63 | | | | | | f | g | White | | | |
| TX2911 | Control | 15 | 3.60 ± 0.91 | | | | | | | g | h | Red | | |
| SC719 | Control | 9 | 4.00 ± 0.71 | | | | | | | | h | i | Red | |
| RTx2536 | Control | 8 | 4.50 ± 0.76 | | | | | | | | | i | j | Yellow |
| RTx430 | Control | 30 | 4.72 ± 0.59 | | | | | | | | | | j | Yellow |

^aDifferent letters indicate significant differences based on Tukey test (minimum significance difference = 0.76; *P*-value < 0.05).

Table 3. Populations means analysis for grain mould resistance in NPGS Ethiopian germplasm collection

| Population ^a | n | Means ± Standard deviation | | | |
|-------------------------|-----|---------------------------------|-----|-------------------------------|-----|
| | | Emergence rate (%) ^b | | Seed degradation ^b | |
| Population 1 | 7 | 79.33 ± 05.83 | ab | 3.54 ± 0.64 | abc |
| Population 2 | 17 | 52.36 ± 27.63 | c | 3.99 ± 0.97 | abc |
| Population 3 | 26 | 59.51 ± 16.11 | bc | 4.03 ± 0.51 | abc |
| Population 4 | 7 | 67.74 ± 20.88 | abc | 3.92 ± 0.20 | abc |
| Population 5 | 6 | 86.95 ± 08.59 | a | 3.33 ± 0.38 | a |
| Population 6 | 34 | 60.02 ± 15.55 | bc | 4.26 ± 0.40 | c |
| Population 7 | 22 | 56.20 ± 20.90 | bc | 3.98 ± 0.55 | abc |
| Population 8 | 6 | 56.99 ± 18.08 | bc | 4.17 ± 0.26 | bc |
| Population 9 | 24 | 66.69 ± 19.02 | abc | 3.38 ± 0.70 | ab |
| Population 10 | 15 | 64.71 ± 13.12 | abc | 3.76 ± 0.59 | abc |
| Population 11 | 8 | 63.29 ± 10.37 | abc | 3.56 ± 0.35 | abc |
| Admixture | 154 | 64.60 ± 18.26 | abc | 3.78 ± 0.61 | abc |

^aPopulation structure analysis according to Cuevas *et al.*, 2017.

^bDifference letters indicate significance difference based on Tukey test (*P*-value < 0.05).

found that Sobic.03G372900 encodes a *Deoxycytidine kinase* protein and Sobic.03G372600 is highly expressed in mature dry seeds. The estimated allelic effect of this locus was a 0.31 decrease in the 5-point score rate for the seed deterioration.

Discussion

The narrow genetic diversity amongst temperate adapted sorghum lines encourages the utilization of tropical germplasm collection to identify the most valuable accessions. Nevertheless, the large number of tropical accessions in NPGS germplasm collection has limited its phenotypic analysis. Today, core sets for the NPGS Ethiopian, Sudanese, Nigeria and Senegal germplasm collections are available to enable phenotypic evaluations, perform genome-wide association analyses and to establish allele deployment strategies (Cuevas *et al.*, 2017; Olatoye *et al.*, 2018; Faye *et al.*, 2019; Cuevas and Prom, 2020). In this study, the evaluation of the grain mould resistance response of the NPGS Ethiopian core set found five accessions with resistance alleles, three novel genetic loci and found that most of this germplasm set is highly susceptible to grain mould. Moreover, our results suggest that the further evaluation of this core set for other seed quality traits (e.g. grain hardness, starch, fat, etc.) and yield should be directed to dry tropical regions with low grain mould incidence. Although the grain deterioration due to mould is not always correlated to

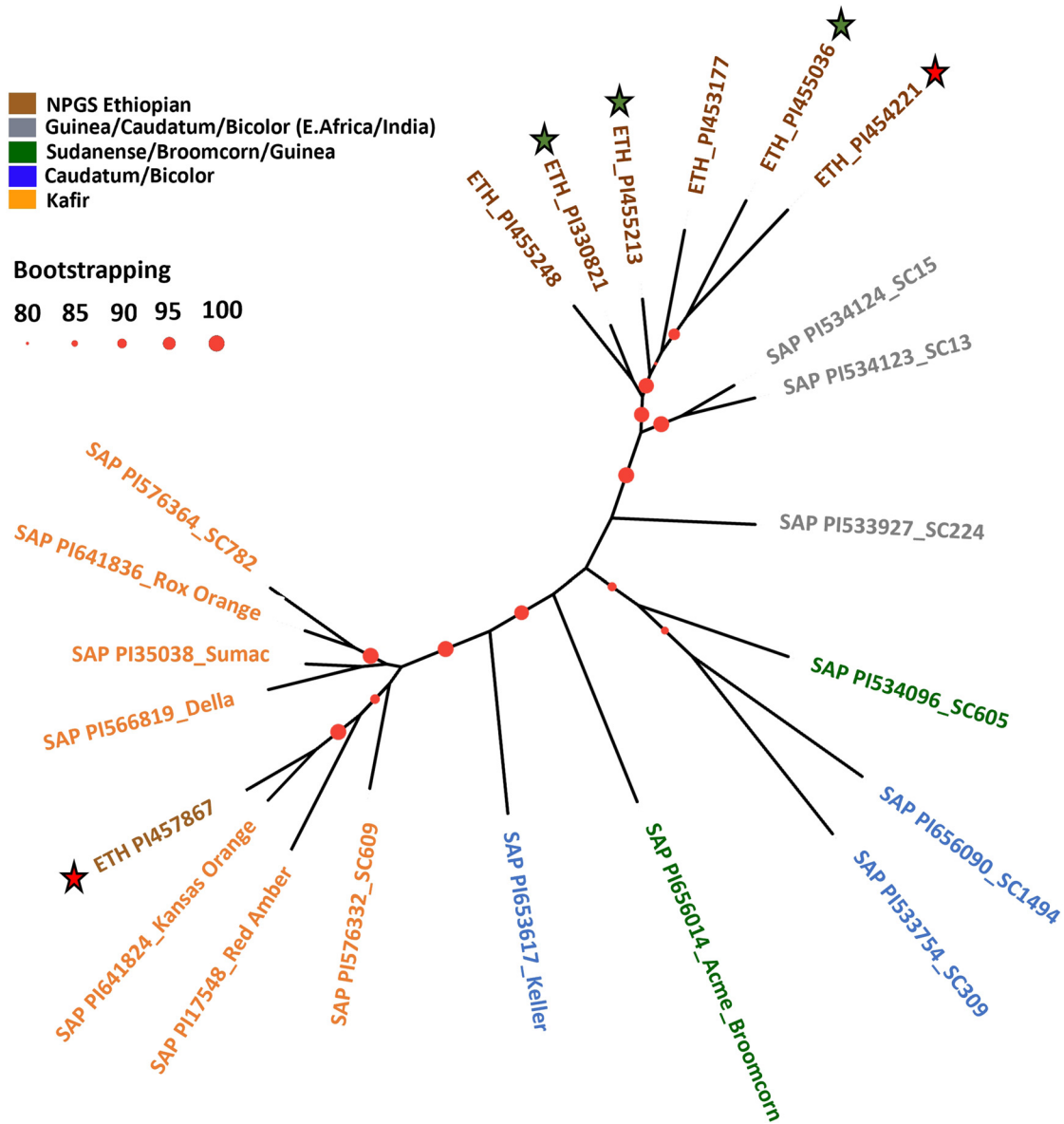


Figure 1. Maximum-likelihood tree based on 2379 SNPs between 15 grain mould resistance accessions presents in the sorghum association panel and 7 NPGS Ethiopian accessions evaluated for grain mould resistance across four years in Isabela, Puerto Rico. Red and green stars represent NPGS Ethiopian accessions accession with low seed deterioration and high emergence rates, respectively.

Table 4. Genomic regions associated with grain mould resistance in NPGS Ethiopian germplasm collection.

| SNPs ^a | Chr ^b | Position | MAF ^c | P-value | LD Block ^d | | |
|--------------------|------------------|----------|------------------|------------------------|-----------------------|----------|-------------|
| | | | | | Start | End | Length (Kb) |
| Emergence rate | | | | | | | |
| S1_9343797 | 1 | 9343797 | 0.31 | 7.98×10^{-8} | 9343797 | 9343798 | 0.002 |
| S8_7329131 | 8 | 7329131 | 0.22 | 1.77×10^{-7} | 7329078 | 7329131 | 0.054 |
| Seed deterioration | | | | | | | |
| S3_68822874 | 3 | 68822874 | 0.08 | 1.07×10^{-10} | 68783596 | 68832008 | 48.41 |

^aSNPs refers to single nucleotide polymorphism (SNPs).

^bChr refers to chromosome.

^cMAF refers to minor allele frequency.

^dLD refers to linkage disequilibrium.

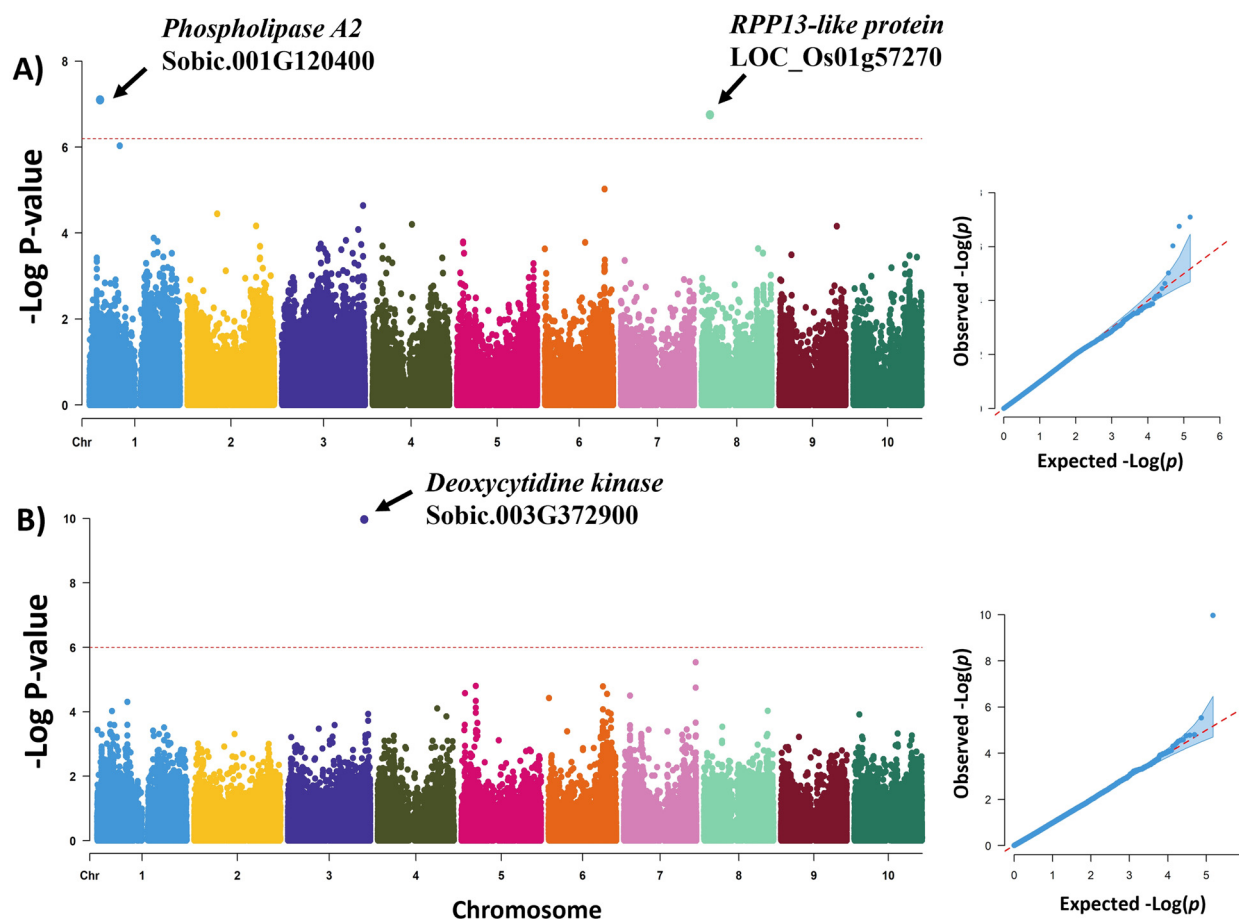


Figure 2. Manhattan and quantile–quantile plots for the GWAS of grain mould resistance in NPGS Ethiopian germplasm collection. (a) GWAS for seed emergence rate. (b) GWAS for seed deterioration.

the chemical and nutritional quality of the grain (Ratnavathi and Komala, 2016).

Grain mould resistance is a complex trait that involves the interaction of multiple genes (Ackerman *et al.*, 2021). Resistance germplasm is the result of the fixation of multiple resistance alleles by natural or human selection. The climate of Ethiopia includes eight agro-ecological zones (cool/humid, cool/subhumid, cool/semiarid, cool/arid, warm/humid, warm/subhumid, warm/semiarid and warm/arid) that are associated with the sorghum population structure (Amede *et al.*, 2015; Wondimu *et al.*, 2021). The lack of passport information in NPGS Ethiopian germplasm collection makes it difficult to determine which of the eight agro-ecological zones are represented. The tropical environmental conditions of this research included high relative humidity ($77\% \pm 10$) and warm temperature ($24^{\circ}\text{C} \pm 0.6$) that might represent the warm/humid zones of Ethiopia. We hypothesize that most of the NPGS Ethiopia germplasm might have been collected within the arid regions with minimal grain mould incidence. Likewise, the compact panicle shape associated with the Durra germplasm and prevalent in Ethiopian germplasm favours the development of fungi in the seeds. In fact, a study using the sorghum mini-core collection from the International Crops Research Institute for the Semi-arid Tropics (ICRISAT) found that panicle compactness is highly correlated with grain mould susceptibility (Sharma *et al.*, 2010). In addition, high frequency of grain mould resistance germplasm was found in a subset of

the NPGS Senegal collection where the loose panicle of Guinea race was the most prevalent (Cuevas *et al.*, 2018). Our results contrast with the evaluation for Ethiopian landraces from EBI at Bako Agriculture Research Center in Ethiopia where most of the accessions were classified as grain mould resistance germplasm based on seed deterioration (Nida *et al.*, 2019). A recent genetic analysis showed that EBI collections is more genetically diverse than NPGS Ethiopian collections and includes different landraces (Girma *et al.*, 2020). Moreover, differences in environmental conditions and mycoflora populations (i.e. fungi species and/or strains) between studies, as well as the absence of seed emergence analysis for EBI germplasm could have contributed to different grain mould resistance results. The prior identification of the most likely resistance germplasm in the NPGS Ethiopia collection based on genetic profile could be an adequate approach to identify grain mould resistant germplasm.

The genetic variation for seedling emergence rate and seed deterioration was suitable to identify novel grain mould resistance loci. During pathogen invasion the plant immune system could recognize specific pathogen secreted effectors and microbe-associated molecular pattern (MAMP) molecules by intracellular resistant genes (*R*) and pattern recognition receptors, respectively. Both induce a signalling pathway that led to a plant defence response, but the MAMP-triggered immunity response render plants resistant to a wider range of pathogens (Boller and Felix, 2009). Grain mould is a complex disease that involves multiple

fungi species, and its resistance mechanism is likely to be associated to MAMP-triggered immunity response (Ackerman *et al.*, 2021). The two candidate genes associated with seedling emergence rate are associated with MAMP immunity response system (*phospholipase A2*) and intracellular resistance protein (RPP13). The involvement of phospholipase activity in response to diverse abiotic and biotic stresses has been widely documented (Hong *et al.*, 2016). In fact, phospholipase A2 has been reported to elicit a resistance reaction to *Phytophthora infestans* in potato (*Solanum tuberosum* L.) (Senda *et al.*, 1998) and play an important role in the hypersensitive reactions of *Arabidopsis thaliana* (Reina-Pinto *et al.*, 2009). Other isoforms of phospholipase (e.g. phospholipase C4, phospholipase D) are also associated with the resistance response of tomato [*Solanum lycopersicum* (SI)] to *Cladosporium fulvum* (Vossen *et al.*, 2010) and citrus [*Citrus sinensis* (L.) Osbeck] fruit to *Penicillium digitatum* (Lafuente *et al.*, 2021). The R gene RPP13 encodes a protein containing a coiled-coil (CC) domain, nucleotide-binding site (NBS) and a leucine-rich repeat (LRR) region. This gene has been associated with resistance to downy mildew in *A. thaliana* (Bittner-Eddy and Beynon, 2001) and wheat (Liu *et al.*, 2020b). Most of the intracellular R gene encoding NBS and LRR domain belong to a superfamily of genes that provide resistance to pathogens through point mutations that led to the recognition of specific effectors proteins. Indeed, the rapid evolution of R genes led to new resistance reactions and the degeneration of susceptible alleles. An analysis of 346 NBS-encoding genes in sorghum found high nucleotide diversity driven by purifying and balance selections (Mace *et al.*, 2014). The candidate gene associated with seedling rating (*Deoxytydine kinase*) is an intracellular protein involved in the salvage pathway for the nucleotide synthesis in plants (Liu *et al.*, 2020a). This pathway plays important roles in seed germination (Jung *et al.*, 2009) and embryo maturation (Stasolla *et al.*, 2003). Therefore, it is possible that this gene is associated with the MAMP immunity response system. These candidate genes might be validated based on the transcriptome analysis of the resistance and susceptible accessions and through the development of high-throughput SNP markers to be tested in segregating populations. Our GWAS provides insight into the grain mould resistance response in sorghum. The results suggest that both the direct and indirect recognition of multiple pathogens involved in the grain mould diseases are required to activate the whole immunity system and boost its resistance response.

Germplasm improvement for multigenic inheritance traits is based on recurrent selection programmes where superior progenies are selected and recombined for consecutive breeding cycles (Fehr, 1991). The complexity of grain mould disease requires the stacking of multiple alleles to confer a resistant response. Herein, we identified five grain mould resistance Ethiopian tropical accessions that include resistance alleles which can be introduced into recurrent selection breeding programmes. However, the existence of multiple unsuitable agronomic traits (e.g. photoperiod, plant height, open panicle shape, etc.) among these tropical accessions restricts their acceptance in sorghum breeding programmes. Pre-breeding provides a unique opportunity to enhance the use of landraces genetic variability and desirable genes alleles in crop improvement programmes (Sharma *et al.*, 2013; Byrne *et al.*, 2018). In this regard, the four most genetically distance tropical accessions could be initially crossed to temperate adapted breeding line with an excellent combining ability to develop a pre-breeding population. In this regard, the first two segregating generations (i.e. F_2 populations and $F_{2:3}$ families)

should be focused on the selection of plant height, flowering time and other agronomical traits in fields with high pressure of grain mould disease. Later, these families could be tests for grain mould resistance in replicate trial to select and advance superior families (i.e. $F_{2:4}$ to $F_{2:6}$). This could lead to an intermediate set of lines with grain mould resistance that can be used in breeding programmes to broaden the genetic diversity of resistance in new varieties.

Conclusion

The NPGS Ethiopian germplasm collection includes grain mould resistant accessions in low frequency. The evaluation of 330 Ethiopian accessions identified two and three accessions with high seedling emergence rates and low seed degradation, respectively. GWAS identified three grain mould resistance loci in chromosome 1, 3 and 8 that explain a limited portion of the observed variation. Candidate gene analysis identified that these three loci include diseases resistance genes involved in pathogen recognition and signalling cascades of the plant immunity system. These five NPGS Ethiopian accessions (PI 457867, PI 454221, PI 455036, PI 455213 and PI 330821) could be used by a pre-breeding germplasm programme to develop new grain mould resistance cultivars.

Supplementary material. The supplementary material for this article can be found at <https://doi.org/10.1017/S1479262124000157>

Acknowledgements. This research was funded by the USDA-ARS Current Research Information System (Project 6090-21000-053-00-D; HC)

References

- Ackerman A, Wendt A and Boyles R (2021) The sorghum grain mold disease complex: pathogens, host responses, and the bioactive metabolites at play. *Frontiers in Plant Science* **12**, 660171.
- Adujna A and Tirfessa A (2014) Response of stay-green quantitative trait locus (QTL) introgression sorghum lines to post-anthesis drought stress. *African Journal of Biotechnology* **13**, 4492–4500.
- Amede T, Auricht C, Boffa J-M, Dixon JA, Mallawaarachchi T, Rukuni M and Teklewold-Deneke T (2015) *The Evolving Farming and Pastoral Landscapes in Ethiopia: A Farming System Framework for Investment Planning and Priority Setting*. ACIAR Publication Series. Australia: Australian Centre for International Agricultural Research.
- Benjamini Y and Hochberg Y (1995) Controlling the false discovery rate: a practical and powerful approach to multiple testing. *Journal of the Royal Statistical Society: Series B (Methodological)* **57**, 289–300.
- Bernardo R (2002) *Breeding for Quantitative Traits in Plants*. Woodbury, MN: Stemma Press.
- Bittner-Eddy PD and Beynon JL (2001) The Arabidopsis downy mildew resistance gene, RPP13–Nd, functions independently of NDR1 and EDS1 and does not require the accumulation of salicylic acid. *Molecular Plant-Microbe Interactions* **14**, 416–421.
- Boller T and Felix G (2009) A renaissance of elicitors: perception of microbe-associated molecular patterns and danger signals by pattern-recognition receptors. *Annual Review of Plant Biology* **60**, 379–406.
- Byrne PF, Volk GM, Gardner C, Gore MA, Simon PW and Smith S (2018) Sustaining the future of plant breeding: the critical role of the USDA-ARS National Plant Germplasm System. *Crop Science* **58**, 451–468.
- Cuevas HE and Prom LK (2020) Evaluation of genetic diversity, agronomic traits, and anthracnose resistance in the NPGS Sudan sorghum core collection. *BMC Genomics* **21**, 88.
- Cuevas HE, Rosa-Valentin G, Hayes CM, Rooney LW and Hoffmann L (2017) Genomic characterization of a core set of the USDA-NPGS Ethiopian sorghum germplasm collection: implications for germplasm

- conservation, evaluation, and utilization in crop improvement. *BMC Genomics* **18**, 108.
- Cuevas HE, Prom LK and Rosa-Valentin G** (2018) Population structure of the NPGS Senegalese sorghum collection and its evaluation to identify new disease resistant genes. *PLoS One* **13**, e0191877.
- Cuevas HE, Fermin-Perez RA, Prom LK, Cooper EA, Bean S and Rooney WL** (2019a) Genome-wide association mapping of gain mod resistance in the US sorghum association panel. *The Plant Genome* **12**, 180070.
- Cuevas HE, Prom LK and Cruet-Burgos CM** (2019b) Genome-wide association mapping of anthracnose (*Colletotrichum sublineolum*) resistance in NPGS Ethiopian sorghum germplasm. *G3-Genes Genomes Genetics* **9**, 2879–2885.
- Dahlberg JA, Burke JJ and Rosenow DT** (2004) Development of a sorghum core collection: refinement and evaluation of a subset from Sudan. *Economic Botany* **58**, 556–567.
- Erpelding JE and Prom LK** (2006) Seed mycoflora for grain mold from natural infection in sorghum germplasm growth at Isabela, Puerto Rico and their association with kernel weight and germination. *Plant Pathology Journal* **5**, 106–112.
- FAOSTAT** (2022) *Food and Agriculture Organization*. 2022 Edn. Rome, Italy: FAOSTAT. Available at <http://faostat.fao.org/site/339/default.aspx>
- Faye JM, Maina F, Hu Z, Fonceka D, Cisse N and Morris GP** (2019) Genomic signatures of adaptation to Sahelian and Soudanian climates in sorghum landraces of Senegal. *Ecology and Evolution* **9**, 6038–6051. doi: 10.1002/ece3.5187
- Fehr W** (1991) *Principles of Cultivar Development: Theory and Technique*. New York, USA: Macmillan.
- Fracasso A, Trindade L and Amaducci S** (2016) Drought tolerance strategies highlighted by two *Sorghum bicolor* races in a dry-down experiment. *Journal of Plant Physiology* **190**, 1–14.
- Girma G, Nida H, Seyoum A, Mekonen M, Nega A, Lule D, Dessalegn K, Bekele A, Gebreyohannes A, Adeyanju A and Tirfessa A** (2019) A large-scale genome-wide association analyses of Ethiopian sorghum landrace collection reveal loci associated with important traits. *Frontiers in Plant Science* **10**, 691.
- Girma G, Nida H, Tirfessa A, Lule D, Bejiga T, Seyoum A, Mekonen M, Nega A, Dessalegn K, Birhanu C, Bekele A, Gebreyohannes A, Ayana G, Tesso T, Ejeta G and Mengiste T** (2020) A comprehensive phenotypic and genomic characterization of Ethiopian sorghum germplasm defines core collection and reveals rich genetic potential in adaptive traits. *The Plant Genome* **13**, e20055.
- Glaubitz JC, Casstevens TM, Lu F, Harriman J, Elshire RJ, Sun Q and Buckler ES** (2014) TASSEL-GBS: a high capacity genotyping by sequencing analysis pipeline. *PLoS One* **9**, e90346.
- Hoang DT, Chernomor O, Von Haeseler A, Minh BQ and Vinh LS** (2018) UFBoot2: improving the ultrafast bootstrap approximation. *Molecular Biology and Evolution* **35**, 518–522.
- Hong Y, Zhao J, Guo L, Kim S-C, Deng X, Wang G, Zhang G, Li M and Wang X** (2016) Plant phospholipases D and C and their diverse functions in stress responses. *Progress in Lipid Research* **62**, 55–74.
- Ibraheem F, Gaffoor I and Chopra S** (2010) Flavonoid phytoalexin-dependent resistance to anthracnose leaf blight requires a functional yellow seed1 in *Sorghum bicolor*. *Genetics* **184**, 915–926.
- Isakeit T, Collins SD, Rooney WL and Prom LK** (2008) Reaction of sorghum hybrids to anthracnose, grain mold and grain weathering in Burleson County, Texas, 2007. *Plant Disease Management Reports* **2**, FC003.
- Jung B, Flörchinger M, Kunz H-H, Traub M, Wartenberg R, Jeblick W, Neuhaus HE and Möhlmann T** (2009) Uridine-ribohydrolase is a key regulator in the uridine degradation pathway of Arabidopsis. *The Plant Cell* **21**, 876–891.
- Kalyanamoorthy S, Minh BQ, Wong TK, Von Haeseler A and Jermini LS** (2017) ModelFinder: fast model selection for accurate phylogenetic estimates. *Nature Methods* **14**, 587–589.
- Lafuente MT, Ballester A-R, Holland N, Cerveró J and Romero P** (2021) Interrelation between ABA and phospholipases D, C and A2 in early responses of citrus fruit to *Penicillium digitatum* infection. *Postharvest Biology and Technology* **175**, 111475.
- Leticun I and Bork P** (2011) Interactive tree of life v2: online annotation and display of phylogenetic trees made easy. *Nucleic Acids Research* **39**, W475–W478.
- Lipka AE, Tian F, Wang QS, Peiffer J, Li M, Bradbury PJ, Gore MA, Buckler ES and Zhang Z** (2012) GAPIT: genome association and prediction integrated tool. *Bioinformatics (Oxford, England)* **28**, 2397–2399.
- Liu L, You J, Zhu Z, Chen K, Hu M, Gu H, Liu W, Wang ZY, Wang YH, Liu SJ, Chen LM, Liu X, Tian YL, Zhou SR, Jiang L and Wan JM** (2020a) WHITE STRIPE LEAF8, encoding a deoxyribonucleoside kinase, is involved in chloroplast development in rice. *Plant Cell Reports* **39**, 19–33.
- Liu X, Zhang C, Zhang L, Huang J, Dang C, Xie C and Wang Z** (2020b) TaRPP13-3, a CC-NBS-LRR-like gene located on chr 7D, promotes disease resistance to wheat powdery mildew in Brock. *Journal of Phytopathology* **168**, 688–699.
- Mace E, Tai S, Innes D, Godwin I, Hu W, Campbell B, Gilding E, Cruickshank A, Prentis P, Wang J and Jordan D** (2014) The plasticity of NBS resistance genes in sorghum is driven by multiple evolutionary processes. *BMC Plant Biology* **14**, 253.
- Mann JA, Kimber CT and Miller FR** (1983) *The origin and early cultivation of sorghum in Africa*. Texas A&M University, College Station, TX: Tex. Agric. Exp. Stn. Bull. 1454.
- Minh BQ, Schmidt HA, Chernomor O, Schrempf D, Woodhams MD, Von Haeseler A and Lanfear R** (2020) IQ-TREE 2: new models and efficient methods for phylogenetic inference in the genomic era. *Molecular Biology and Evolution* **37**, 1530–1534.
- Morris GP, Ramu P, Deshpande SP, Hash CT, Shah T, Upadhyaya HD, Riera-Lizarazu O, Brown PJ, Acharya CB, Mitchell SE, Harriman J, Glaubitz JC, Buckler ES and Kresovich S** (2013) Population genomic and genome-wide association studies of agroclimatic traits in sorghum. *Proceedings of the National Academy of Sciences of the United States of America* **110**, 453–458.
- Mutava R, Prasad P, Tuinstra M, Kofoid K and Yu J** (2011) Characterization of sorghum genotypes for traits related to drought tolerance. *Field Crops Research* **123**, 10–18.
- Nida H, Girma G, Mekonen M, Lee S, Seyoum A, Dessalegn K, Tadesse T, Ayana G, Senbetay T, Tesso T, Ejeta G and Mengiste T** (2019) Identification of sorghum grain mold resistance loci through genome wide association mapping. *Journal of Cereal Science* **85**, 295–304.
- Olatoye MO, Hu ZB, Maina F and Morris GP** (2018) Genomic signatures of adaptation to a precipitation gradient in Nigerian sorghum. *G3-Genes Genomes Genetics* **8**, 3269–3281.
- Prom LK** (2004) The effects of *Fusarium thapsinum*, *Curvularia lunata* and their combination on sorghum germination and seed mycoflora. *Journal of New Seeds* **6**, 39–49.
- Prom LK and Erpelding J** (2009) New sources of grain mold resistance among sorghum accessions from Sudan. *Journal of Tropical and Subtropical Agroecosystems* **10**, 457–463.
- Prom LK, Cuevas HE, Ahn E, Isakeit T, Rooney WL and Magill C** (2020) Genome-wide association study of grain mold resistance in sorghum association panel as affected by inoculation with *Alternaria alternata* alone and *Alternaria alternata*, *Fusarium thapsinum*, and *Curvularia lunata* combined. *European Journal of Plant Pathology* **157**, 783–798.
- Purcell S, Neale B, Todd-Brown K, Thomas L, Ferreira MAR, Bender D, Maller J, Sklar P, De Bakker PI, Daly MJ and Sham PC** (2007) PLINK: a tool set for whole-genome association and population-based linkage analyses. *American Journal of Human Genetics* **81**, 559–575.
- Ratnavathi C and Komala V** (2016) Sorghum grain quality. In Ratnavathi CV, Patil JV and Chava UD (eds), *Sorghum Biochemistry*. New York: Academic Press; Elsevier, pp. 1–61.
- Reina-Pinto JJ, Voisin D, Kurdyukov S, Faust A, Haslam RP, Michaelson LV, Efremova B, Franke B, Schreiber L, Napier JA and Yephremov A** (2009) Misexpression of FATTY ACID ELONGATION1 in the Arabidopsis epidermis induces cell death and suggests a critical role for phospholipase A2 in this process. *The Plant Cell* **21**, 1252–1272.
- Rhodes DH, Hoffmann L, Rooney WL, Herald TJ, Bean S, Boyles R, Brenton ZW and Kresovich S** (2017) Genetic architecture of kernel composition in global sorghum germplasm. *BMC Genomics* **18**, 15.
- Rooney W and Serna-Saldivar SO** (1991) Sorghum. In Lorenz K and Kulp K (eds), *Handbook of Cereal Science and Technology*. New York: Marcel Dekker Inc, pp. 233–270.
- Sendra K, Doka N and Kawakita K** (1998) Effect of mastoparan on phospholipase A2 activity in potato tubers treated with fungal elicitor. *Plant and Cell Physiology* **39**, 1080–1098.

- Sharma R, Rao V, Upadhyaya H, Reddy VG and Thakur R** (2010) Resistance to grain mold and downy mildew in a mini-core collection of sorghum germplasm. *Plant Disease* **94**, 439–444.
- Sharma S, Upadhyaya HD, Varshney RK and Gowda C** (2013) Pre-breeding for diversification of primary gene pool and genetic enhancement of grain legumes. *Frontiers in Plant Science* **4**, 309.
- Singh SP** (1985) Sources of cold tolerance in grain sorghum. *Canadian Journal of Plant Science* **65**, 251–257.
- Snowden JD** (1936) *The Cultivated Races of sorghum*. London, England: Adlard and Son.
- Srinivasa Rao P, Reddy BV, Nagaraj N and Upadhyaya HD** (2014) Sorghum production for diversified uses. In Wang Y-H, Upadhyaya HD and Kole C (eds), *Genetics, Genomics and Breeding of Sorghum*. Boca Raton, FL: CRC Press, pp. 1–27.
- Stasolla C, Loukanina N, Ashihara H, Yeung EC and Thorpe TA** (2003) Changes in deoxyribonucleotide biosynthesis during carrot somatic embryogenesis. *Plant Physiology and Biochemistry* **41**, 779–785.
- Thakur RP, Reddy BVS, Indira S, Rao VP, Navi SS, Yang XB and Ramesh S** (2006) *Sorghum Grain Mold*. Information Bulletin No. 72. Patancheru, India: International Crops Research Institute for the Semi-Arid Tropics.
- Thakur RP, Rao VP, Reddy BVS and Sanjana Reddy P** (2007) Grain mold. In Thakur RP, Reddy BVS and Mathur K (eds), *Screening Techniques for Sorghum Diseases*. Information Bulletin No. 76. Patancheru, India: International Crops Research Institute for the Semi-Arid Tropics.
- Vossen JH, Abd-El-Halim A, Fradin EF, Van Den Berg GC, Ekengren SK, Meijer HJ, Seife A, Bai Y, Ten Have A, Munnik T, Thomma B and Joosten M** (2010) Identification of tomato phosphatidylinositol-specific phospholipase-C (PI-PLC) family members and the role of PLC4 and PLC6 in HR and disease resistance. *The Plant Journal* **62**, 224–239.
- Wondimu Z, Dong H, Paterson AH, Worku W and Bantte K** (2021) Genetic diversity, population structure, and selection signature in Ethiopian sorghum [*Sorghum bicolor* L.(Moench)] germplasm. *G3-Genes Genomes Genetics* **11**, jkab087.
- Yin L** (2022) CMplot: circle Manhattan plot. R package version 4.2. 0.